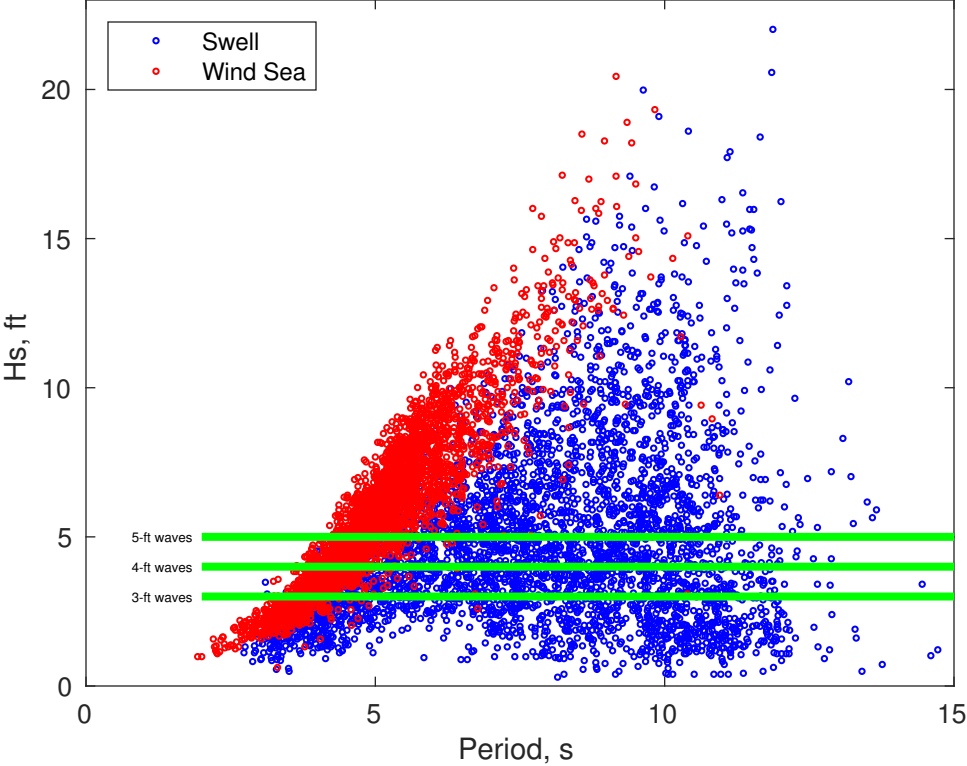
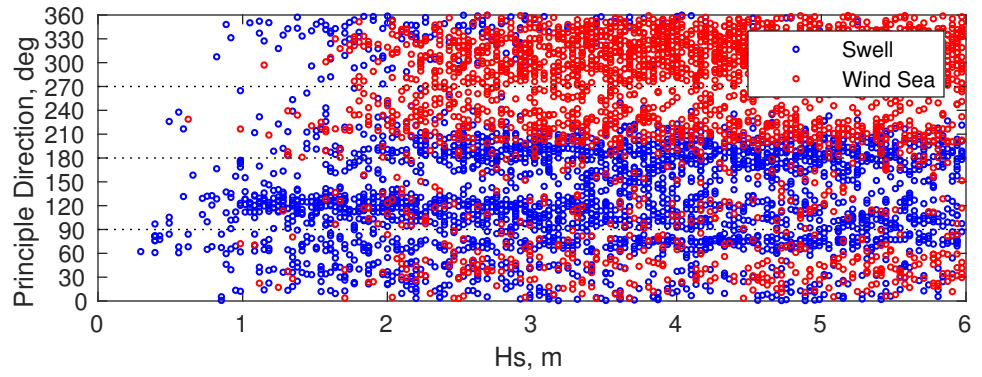
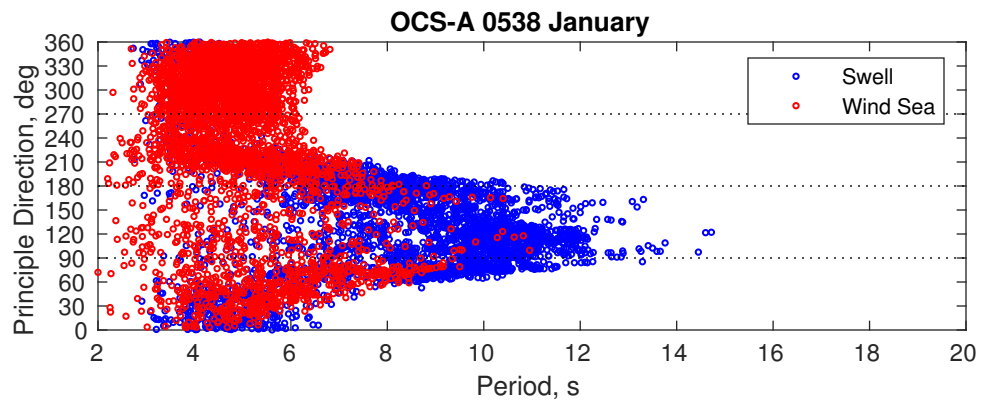
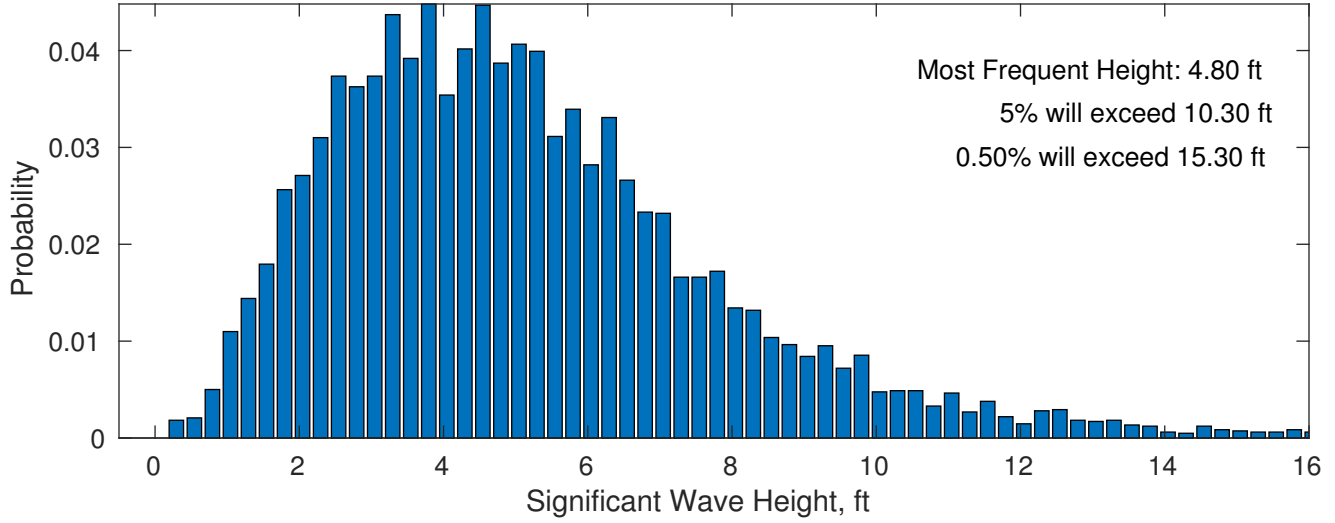


OCS-A 0538 January

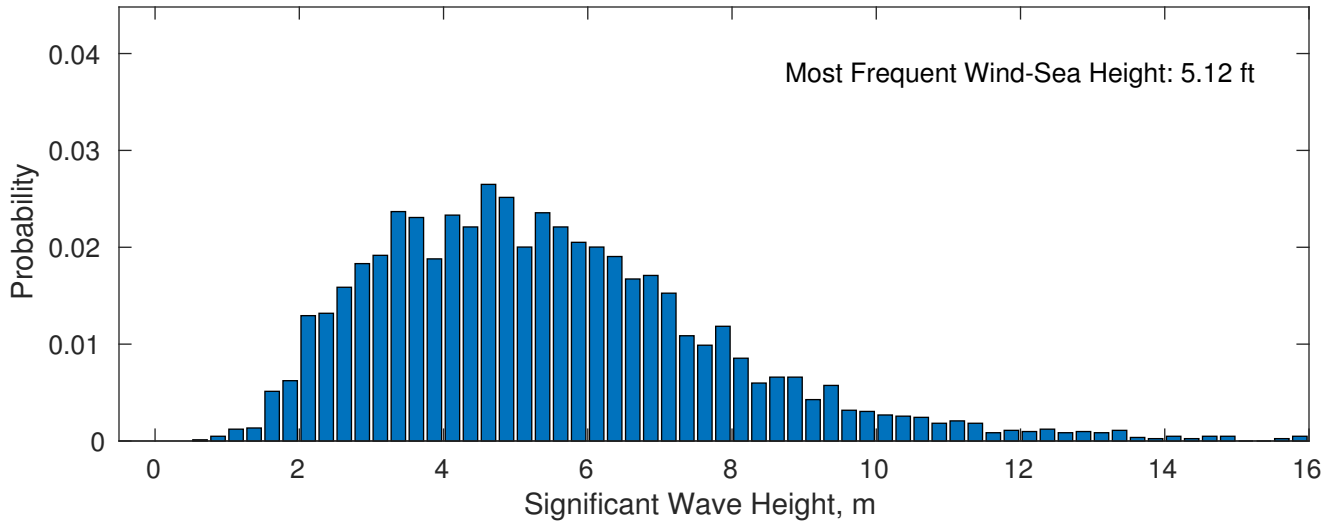




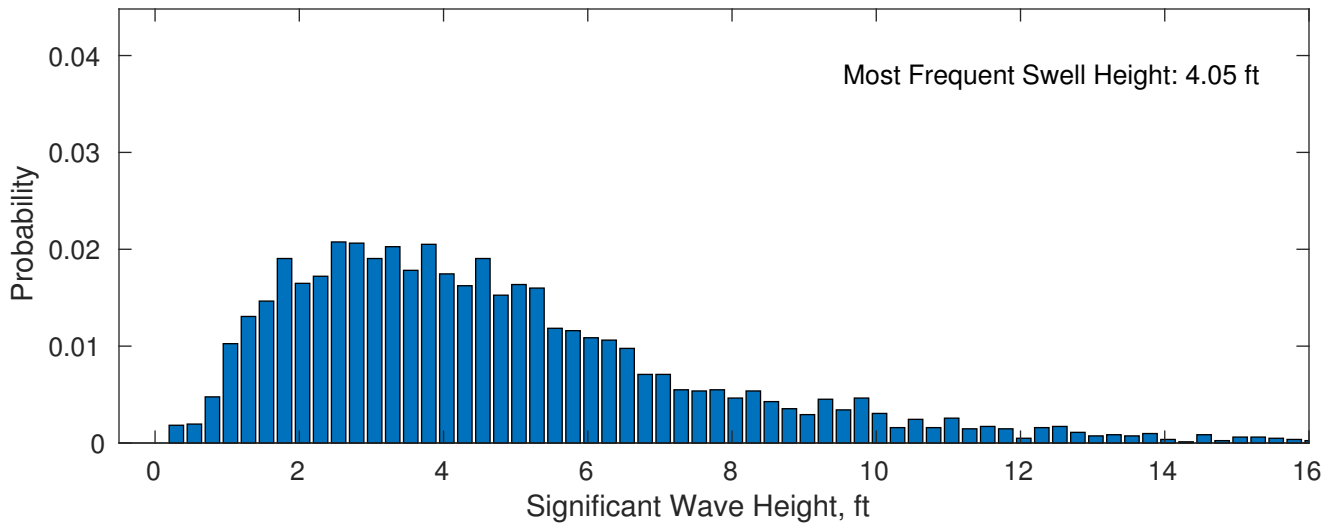
January Wave Height PDF: 1979 - 2015



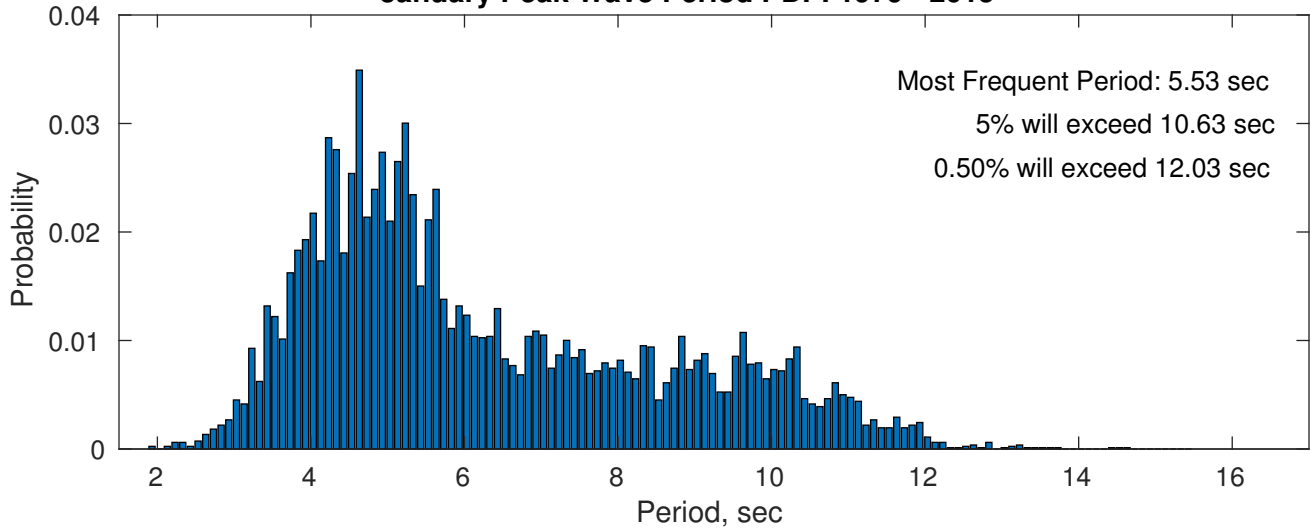
Wind-Sea: 53.34%



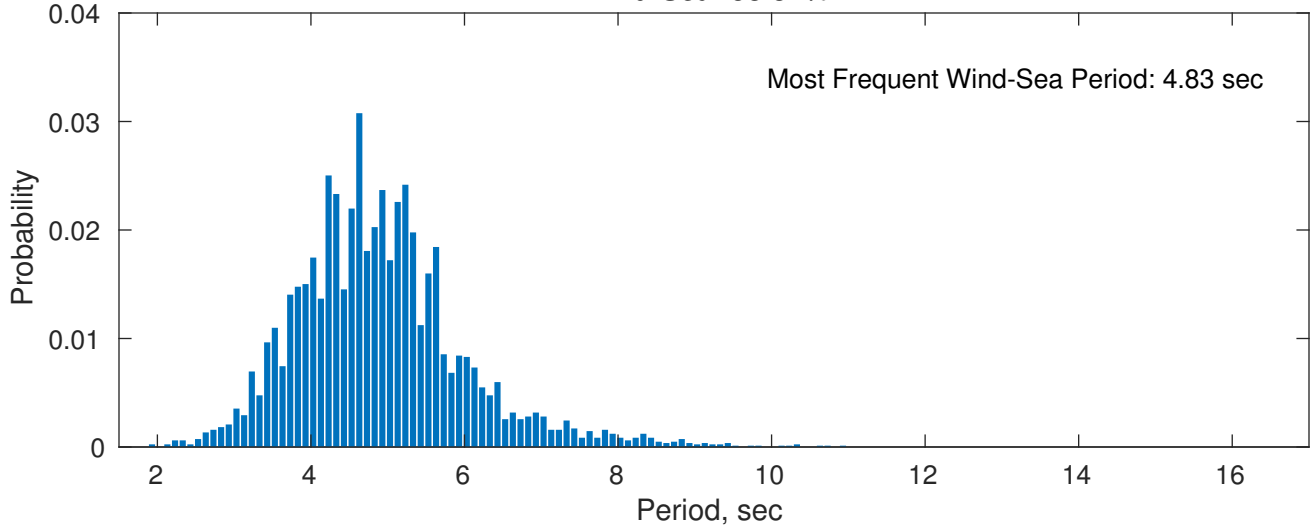
Swell: 46.66%



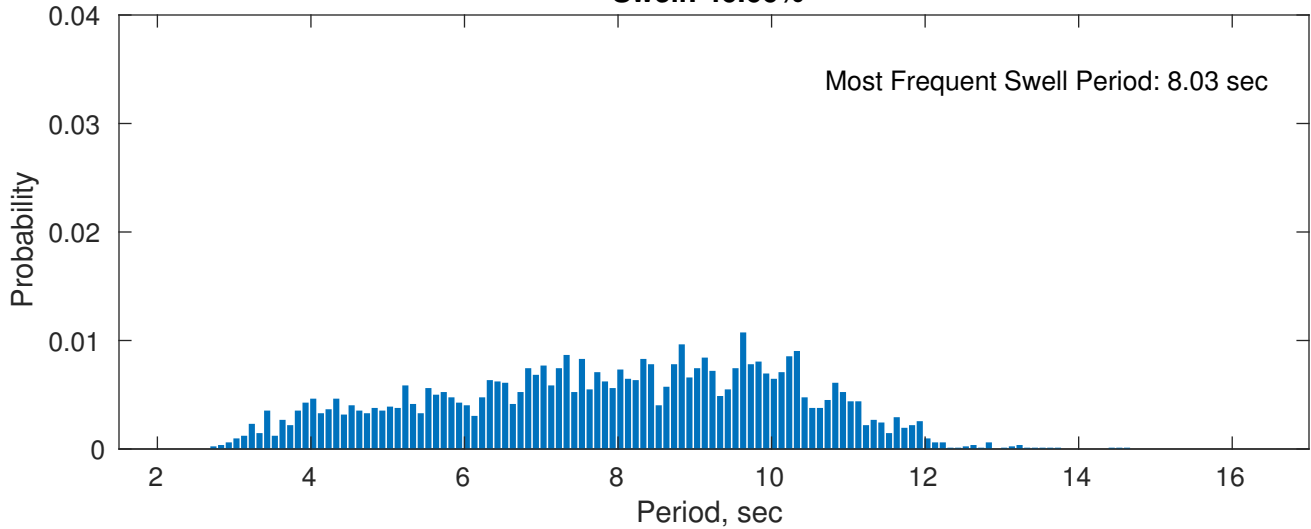
January Peak Wave Period PDF: 1979 - 2015



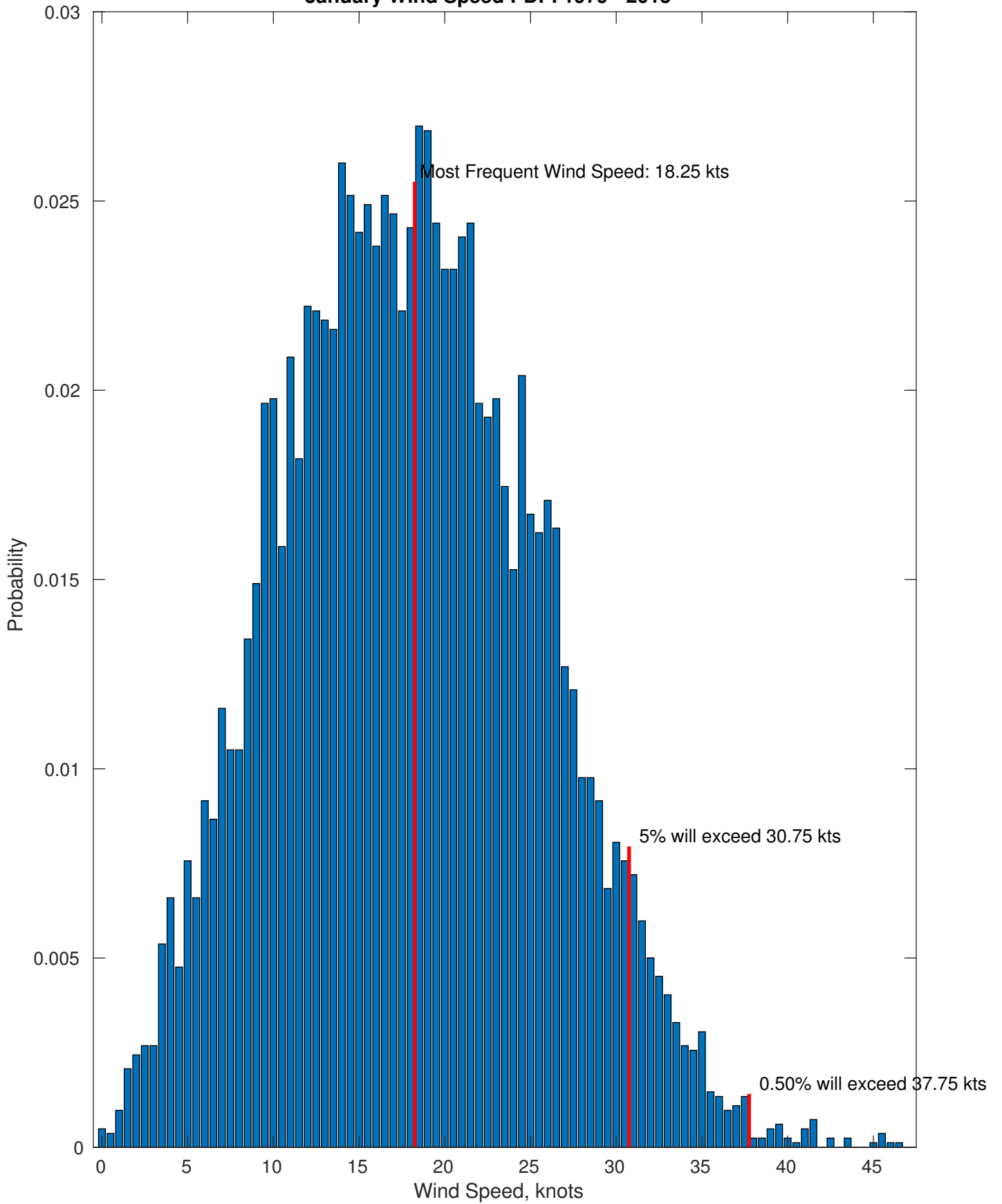
Wind-Sea: 53.34%



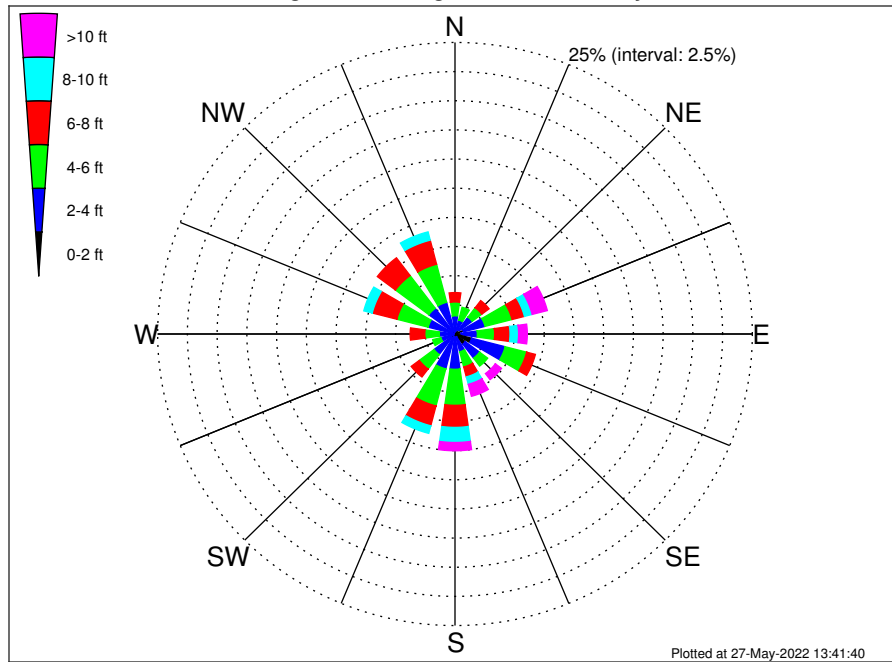
Swell: 46.66%



January Wind Speed PDF: 1979 - 2015



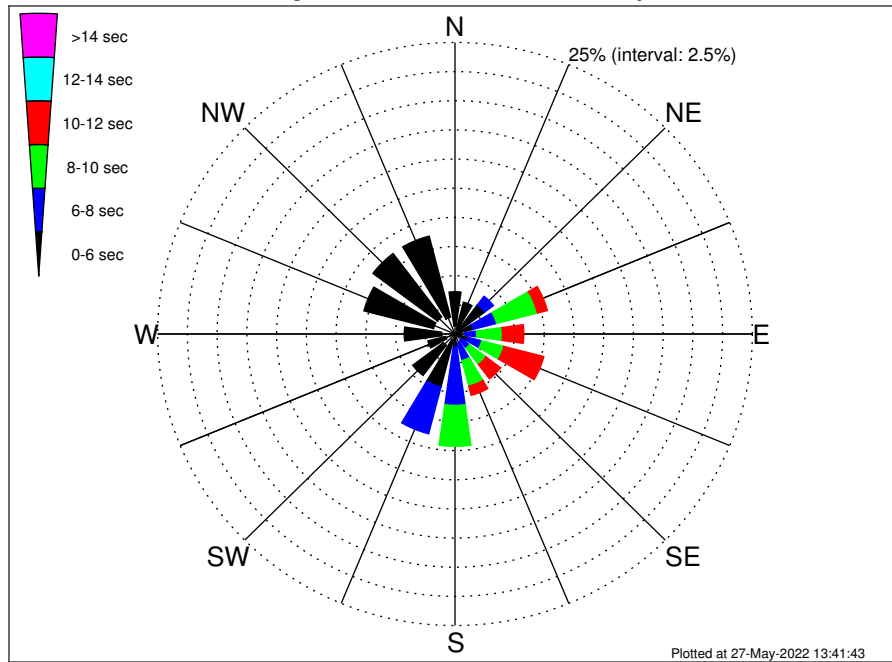
OCS-A 0538 Climatological WaveHeight Rose for January: 1979 - 2015



Joint Frequency Distribution Table

	N	NNE	NE	ENE	E	ESE	SE	SSE	S	SSW	SW	WSW	W	WNW	NW	NNW	Total
calm	0.02	0.02	0.02	0.20	0.15	0.11	0.10	0.05	0.04	•	0.05	0.01	0.01	•	0.01	0.02	0.82
1 - 2 ft	0.16	0.29	0.44	0.55	0.38	1.33	0.99	0.22	0.34	0.22	0.33	0.12	0.10	0.11	0.24	0.29	6.12
2 - 4 ft	1.38	0.92	1.34	1.87	1.36	2.92	1.50	1.31	2.65	2.87	1.83	1.09	1.21	2.22	2.50	2.49	29.45
4 - 6 ft	1.18	1.14	1.01	2.34	1.45	1.87	0.85	1.34	3.09	3.28	1.55	0.72	1.22	2.72	3.52	3.37	30.67
6 - 8 ft	0.81	0.49	0.77	1.07	1.29	0.76	0.45	0.88	1.89	1.76	0.85	0.39	1.23	2.14	1.90	2.14	18.83
8 - 10 ft	0.22	0.11	0.35	0.67	0.72	0.48	0.35	0.66	1.29	0.67	0.21	0.11	0.57	0.73	0.54	0.73	8.42
10 - 12 ft	0.01	0.01	0.09	0.65	0.33	0.18	0.42	0.42	0.48	0.16	0.06	0.02	0.05	0.09	0.11	0.15	3.21
12 - 14 ft	0.01	•	0.01	0.55	0.23	0.12	0.15	0.31	0.12	0.02	•	•	•	•	•	•	1.53
14 - 16 ft	•	•	0.02	0.07	0.06	0.06	0.04	0.26	0.09	•	•	•	•	•	•	•	0.60
16 - 18 ft	•	•	•	0.04	0.05	0.04	0.01	0.07	0.01	•	•	•	•	•	•	•	0.22
> 18 ft	•	•	•	0.01	0.06	0.01	0.04	0.01	0.01	•	•	•	•	•	•	•	0.15
Total	3.80	2.98	4.07	8.02	6.08	7.87	4.90	5.52	10.01	8.99	4.88	2.47	4.40	8.01	8.83	9.19	100.00

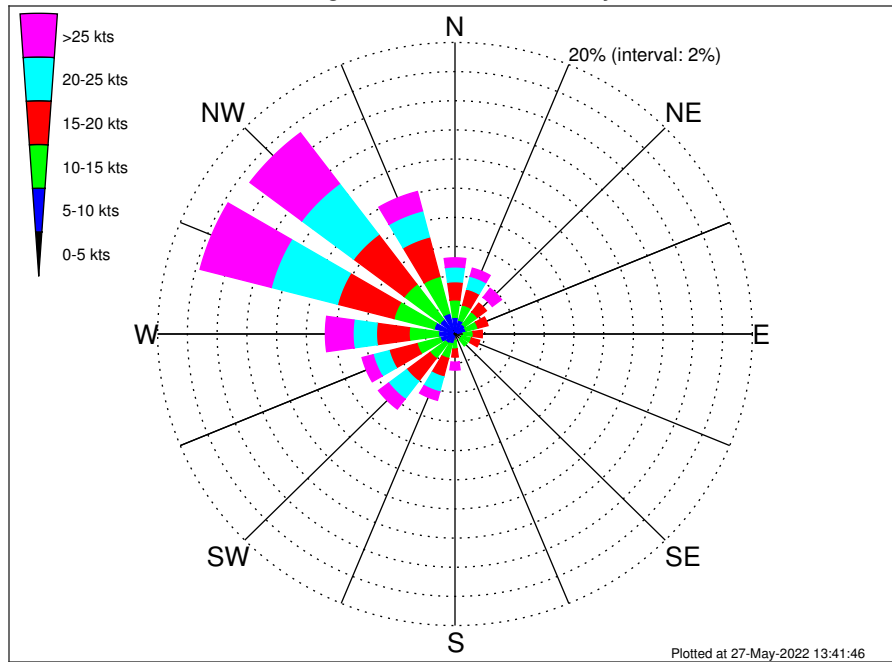
OCS-A 0538 Climatological WavePeriod Rose for January: 1979 - 2015



Joint Frequency Distribution Table

	N	NNE	NE	ENE	E	ESE	SE	SSE	S	SSW	SW	WSW	W	WNW	NW	NNW	Total
calm	•	•	•	•	•	•	•	•	•	•	•	•	•	•	•	•	•
1 - 2 sec	•	•	•	0.01	•	•	•	•	•	•	0.01	•	•	•	•	•	0.02
2 - 4 sec	0.71	0.43	0.48	0.26	0.22	0.29	0.24	0.20	0.31	0.52	1.21	0.82	1.12	1.87	1.84	1.49	12.00
4 - 6 sec	2.92	2.39	2.66	1.31	0.62	0.81	0.43	0.61	0.81	4.18	3.24	1.54	3.15	6.04	6.80	7.18	44.67
6 - 8 sec	0.17	0.16	0.92	2.04	0.98	1.23	0.85	1.54	5.01	4.14	0.43	0.11	0.12	0.10	0.18	0.52	18.50
8 - 10 sec	•	•	0.01	3.55	2.17	1.92	1.75	2.27	3.52	0.15	•	•	•	•	•	•	15.33
10 - 12 sec	•	•	•	0.85	1.79	3.47	1.54	0.82	0.38	•	•	•	•	•	•	•	8.85
12 - 14 sec	•	•	•	•	0.28	0.13	0.09	0.09	•	•	•	•	•	•	•	•	0.59
14 - 16 sec	•	•	•	•	0.01	0.02	•	•	•	•	•	•	•	•	•	•	0.04
18 - 20 sec	•	•	•	•	•	•	•	•	•	•	•	•	•	•	•	•	•
22 - 24 sec	•	•	•	•	•	•	•	•	•	•	•	•	•	•	•	•	•
Total	3.80	2.98	4.07	8.02	6.08	7.87	4.90	5.52	10.01	8.99	4.88	2.47	4.40	8.01	8.83	9.19	100.00

OCS-A 0538 Climatological Wind Rose for January: 1979 - 2015



Joint Frequency Distribution Table

	N	NNE	NE	ENE	E	ESE	SE	SSE	S	SSW	SW	WSW	W	WNW	NW	NNW	Total
calm	0.01	•	•	•	0.01	0.01	•	•	•	0.02	0.01	•	0.01	•	•	•	0.09
0 - 5 kts	0.21	0.15	0.17	0.18	0.11	0.16	0.12	0.16	0.13	0.15	0.17	0.17	0.16	0.22	0.17	0.33	2.76
5 - 10 kts	0.93	0.84	0.66	0.59	0.45	0.32	0.35	0.38	0.34	0.54	0.61	0.85	0.94	1.23	1.09	1.14	11.26
10 - 15 kts	1.20	1.07	1.06	0.83	0.66	0.66	0.55	0.43	0.56	1.03	1.31	1.61	1.98	2.80	3.02	2.61	21.36
15 - 20 kts	1.25	1.12	0.76	0.70	0.61	0.57	0.34	0.44	0.55	1.31	1.97	1.94	2.20	3.92	4.27	2.80	24.73
20 - 25 kts	1.01	0.90	0.49	0.49	0.49	0.23	0.26	0.35	0.34	1.06	1.53	1.11	1.57	4.60	4.37	1.86	20.67
25 - 30 kts	0.39	0.27	0.32	0.26	0.22	0.23	0.24	0.21	0.29	0.38	0.61	0.62	1.33	3.31	3.00	0.99	12.67
30 - 35 kts	0.13	0.21	0.27	0.12	0.15	0.07	0.01	0.09	0.11	0.18	0.16	0.13	0.46	1.51	1.16	0.32	5.09
35 - 40 kts	0.09	0.05	0.11	0.09	0.02	0.02	0.01	0.05	0.09	0.04	0.07	0.01	0.06	0.12	0.20	0.06	1.09
40 - 45 kts	0.01	0.04	0.05	0.01	0.01	•	0.02	•	0.05	•	0.01	•	•	•	•	•	0.21
45 - 50 kts	•	0.01	0.04	0.01	•	•	•	•	0.01	•	•	•	•	•	•	•	0.07
Total	5.23	4.66	3.92	3.27	2.73	2.28	1.92	2.10	2.48	4.70	6.45	6.46	8.72	17.71	17.28	10.10	100.00