

OCS-A 0538 - November

Latitude: 39.71 N Longitude: 73.16 W

Weather Days

Wave Height > 3.0 ft Mean: 23.4 days Range: 21.4 - 25.5 days p10:26.5 days p50:24 days p90:21.5 days
Wave Height > 4.0 ft Mean: 18.5 days Range: 15.7 - 21.2 days p10:22.5 days p50:19 days p90:15.5 days
Wave Height > 5.0 ft Mean: 13.7 days Range: 10.7 - 16.7 days p10:18.5 days p50:13.5 days p90:10.5 days

Wind Speed > 20.0 knots Mean: 9.6 days Range: 7.1 - 12.1 days p10:13 days p50:9.5 days p90:6 days
Wind Speed > 25.0 knots Mean: 4.2 days Range: 2.4 - 6.1 days p10:7 days p50:4.5 days p90:2.5 days
Wind Speed > 30.0 knots Mean: 1.3 days Range: 0.4 - 2.2 days p10:3 days p50:1.5 days p90:0.5 days

Working Window Probability

Wave Height < 3.0 ft	3 days or longer: 10%
	5 days or longer: 0%
	7 days or longer: 0%
Wave Height < 4.0 ft	3 days or longer: 22%
	5 days or longer: 1%
	7 days or longer: 0%
Wave Height < 5.0 ft	3 days or longer: 34%
	5 days or longer: 5%
	7 days or longer: 2%

Waves

Mean Height: 4 - 6 ft
The wave heights will occasionally reach 14 - 16 ft, but rarely higher.

Mean Period: 6 - 8 sec
The wave periods will occasionally reach 12 - 14 sec, but rarely longer.

Principle Direction, from: ESE
WindSea/Swell: 44% / 56%

Winds

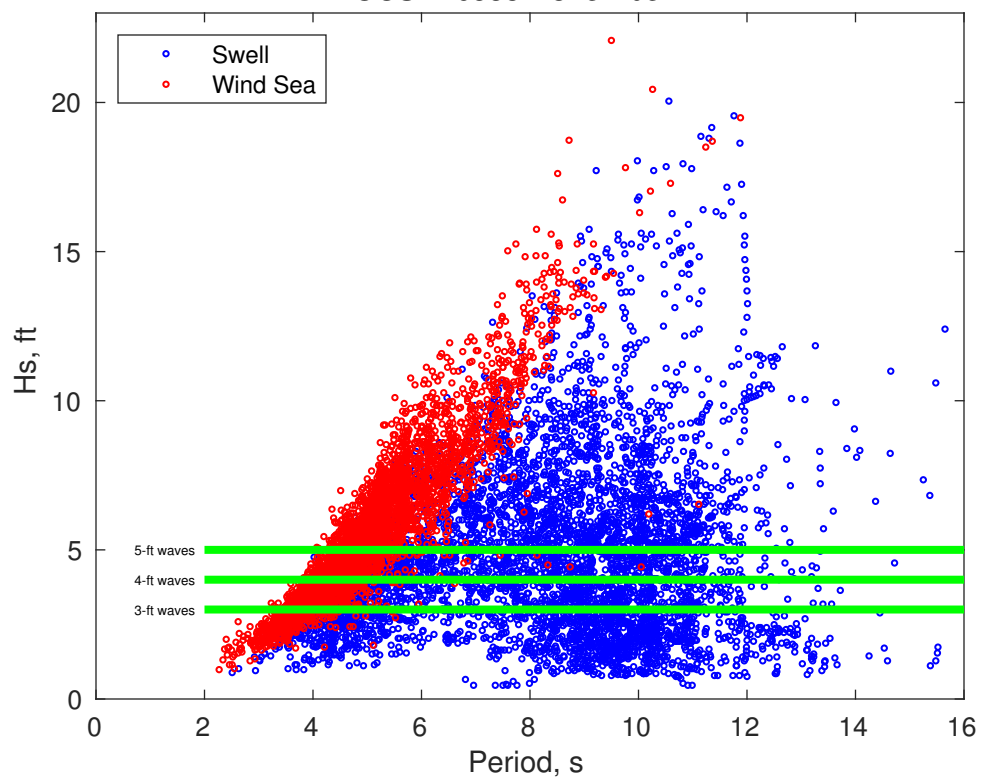
Mean Speed: 15 - 20 kts
The winds will occasionally reach 35 - 40 kts, but rarely greater.

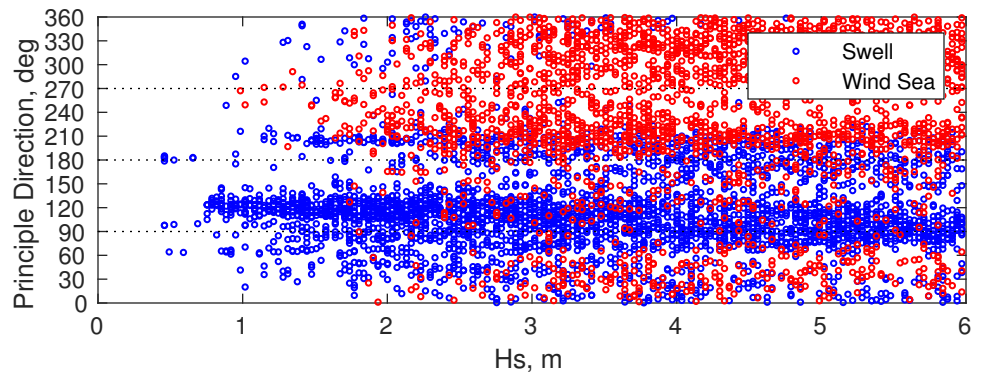
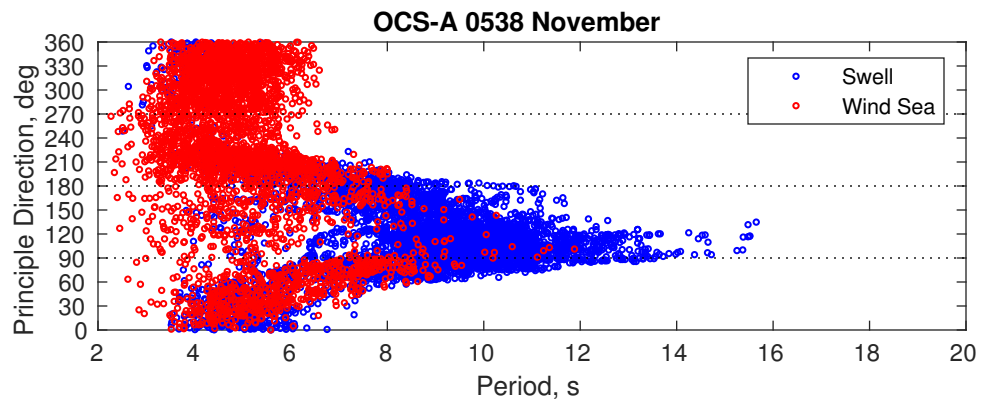
Principle Direction, from: NW

Severe Storms

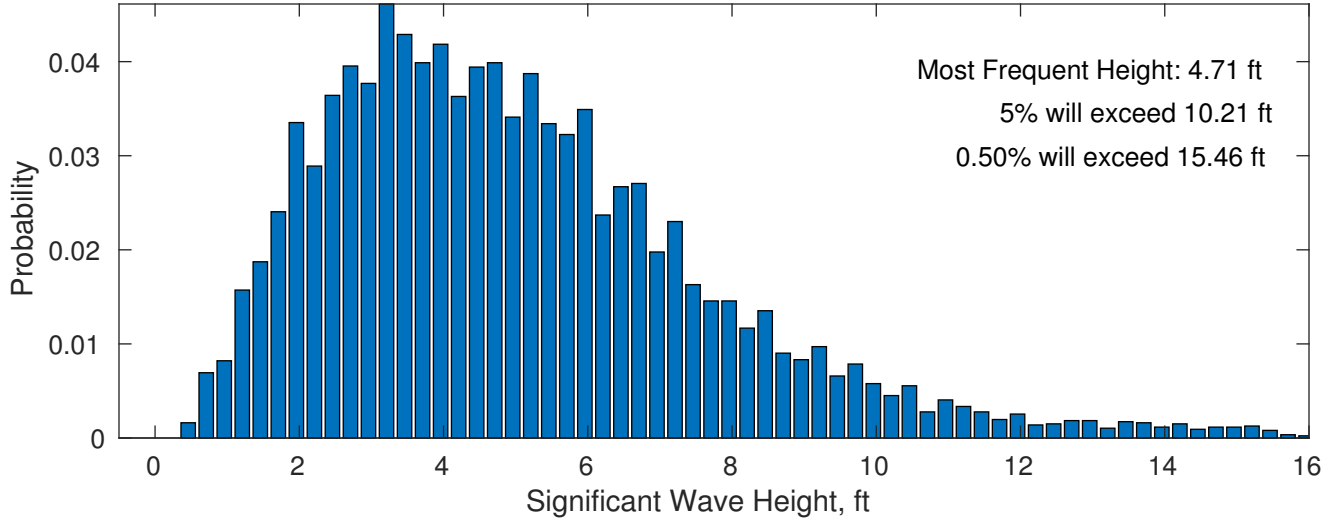
There is a 69 % chance of a storm occurring in the month with winds peaking above 34 kts.
There is a 56 % chance of a storm occurring in the month with waves peaking at 4m (13 ft) or greater.

OCS-A 0538 November

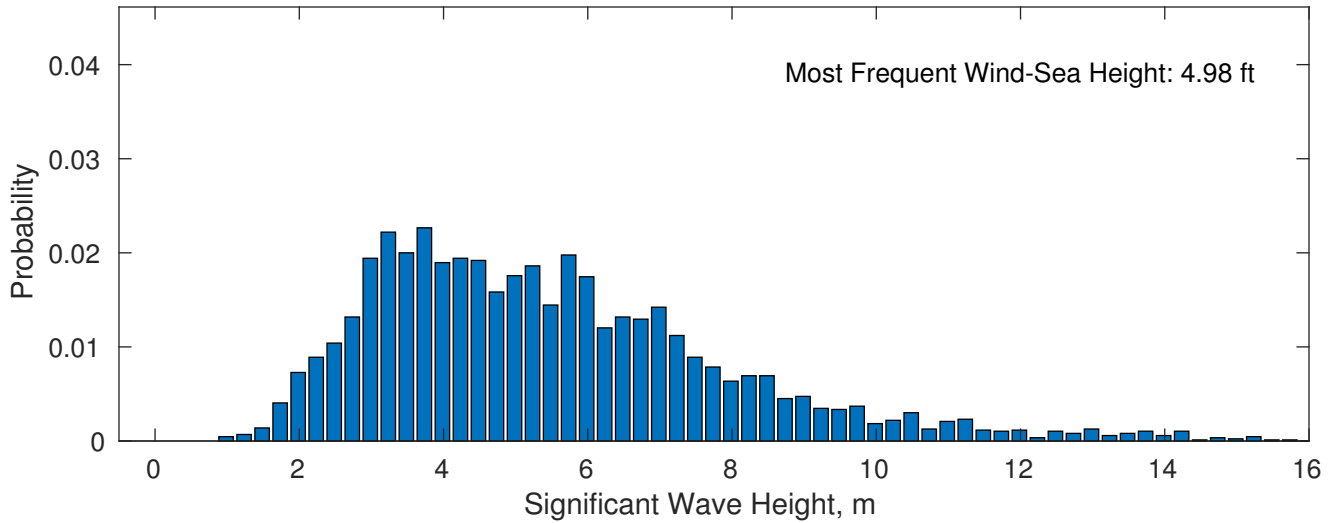




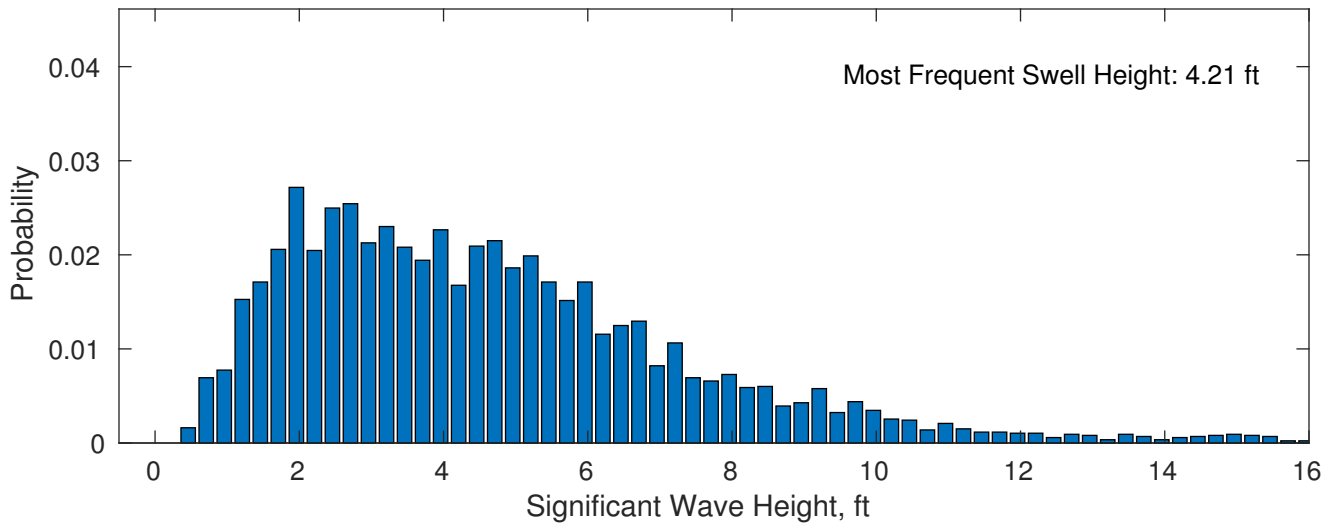
November Wave Height PDF: 1979 - 2015



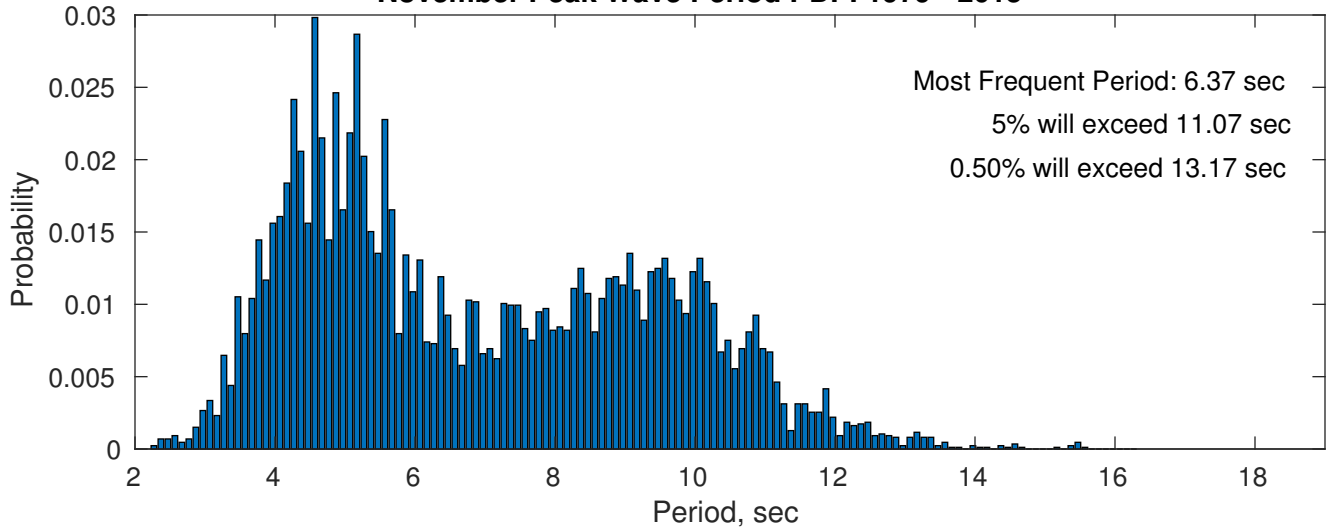
Wind-Sea: 43.86%



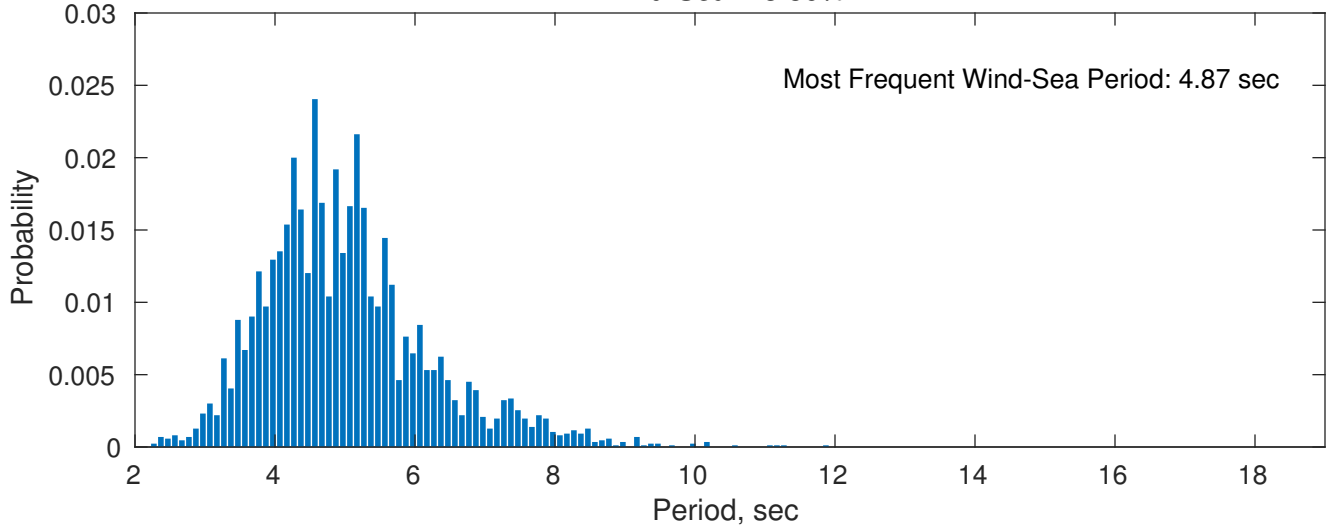
Swell: 56.14%



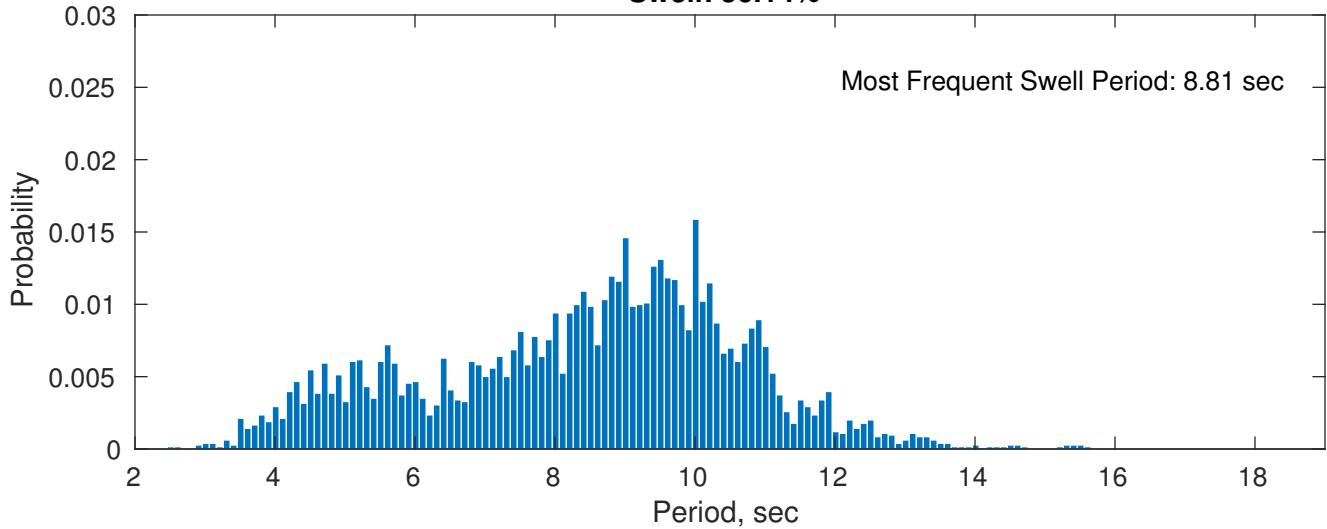
November Peak Wave Period PDF: 1979 - 2015



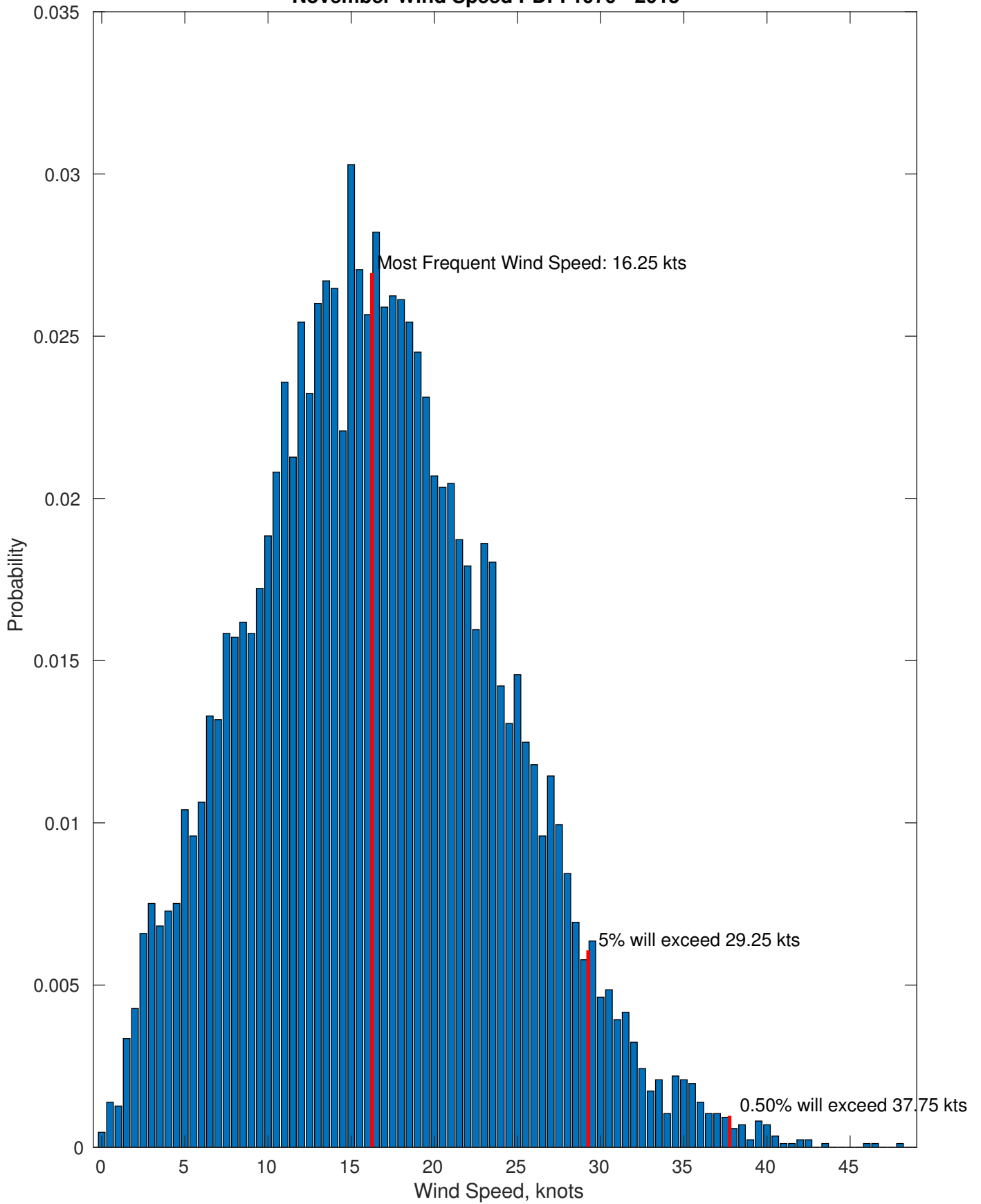
Wind-Sea: 43.86%



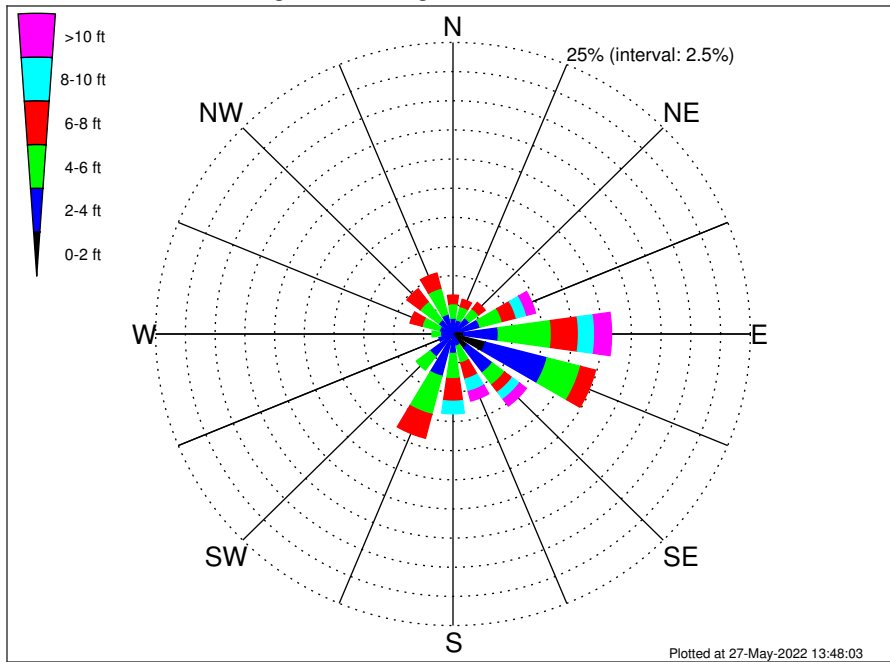
Swell: 56.14%



November Wind Speed PDF: 1979 - 2015



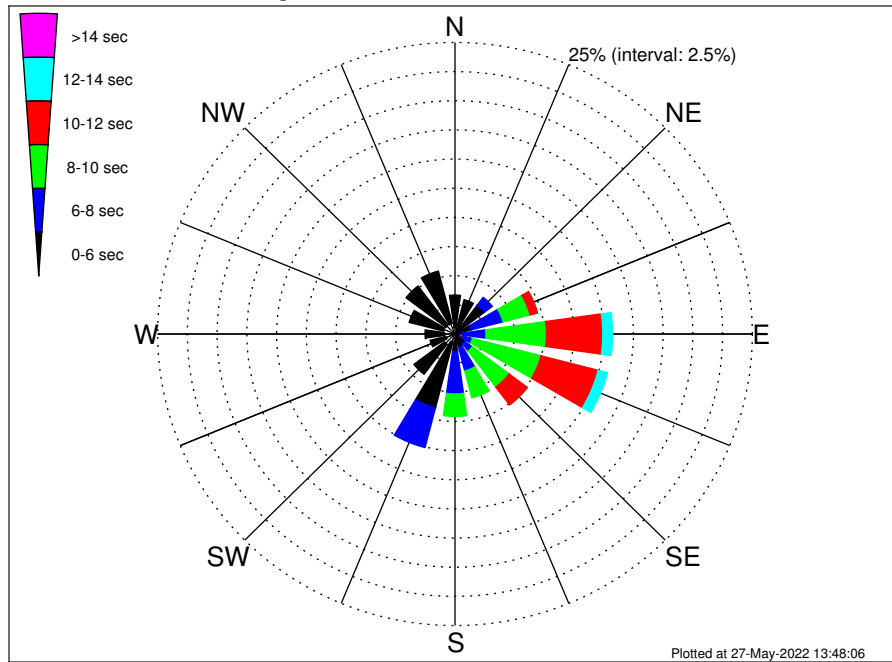
OCS-A 0538 Climatological WaveHeight Rose for November: 1979 - 2015



Joint Frequency Distribution Table

	N	NNE	NE	ENE	E	ESE	SE	SSE	S	SSW	SW	WSW	W	WNW	NW	NNW	Total
calm	•	•	0.01	0.09	0.07	0.34	0.25	•	0.12	•	0.01	0.01	0.01	0.01	•	•	0.92
1 - 2 ft	0.06	0.12	0.30	0.43	0.83	2.49	1.26	0.15	0.10	0.59	0.14	0.18	0.12	0.09	0.08	0.08	7.02
2 - 4 ft	1.31	1.14	1.40	1.83	2.91	5.36	2.62	0.92	1.46	3.16	2.27	1.03	0.94	1.08	1.43	1.68	30.53
4 - 6 ft	1.24	1.18	0.99	1.93	4.46	2.90	1.29	1.49	2.16	3.38	1.46	0.59	0.71	1.53	1.95	2.30	29.56
6 - 8 ft	0.74	0.64	0.68	1.23	2.28	1.29	0.81	1.43	1.93	2.12	0.62	0.30	0.57	1.03	1.39	1.34	18.39
8 - 10 ft	0.12	0.09	0.38	0.90	1.36	0.36	0.76	1.10	1.08	0.60	0.02	0.06	0.20	0.27	0.32	0.40	8.02
10 - 12 ft	0.02	0.03	0.13	0.40	0.80	0.17	0.24	0.45	0.28	0.20	0.02	0.05	0.02	0.09	0.08	0.02	3.02
12 - 14 ft	•	0.01	0.05	0.27	0.21	0.17	0.20	0.27	0.10	0.05	•	0.01	•	•	•	•	1.33
14 - 16 ft	•	•	•	0.09	0.27	0.15	0.18	0.09	0.01	0.01	•	•	•	•	•	•	0.81
16 - 18 ft	•	•	•	•	0.08	0.06	0.08	0.02	•	•	•	•	•	•	•	•	0.24
> 18 ft	•	•	•	•	0.06	0.06	0.02	0.01	•	•	•	•	•	•	•	•	0.15
Total	3.48	3.21	3.94	7.17	13.33	13.35	7.73	5.94	7.24	10.09	4.54	2.23	2.55	4.09	5.26	5.83	100.00

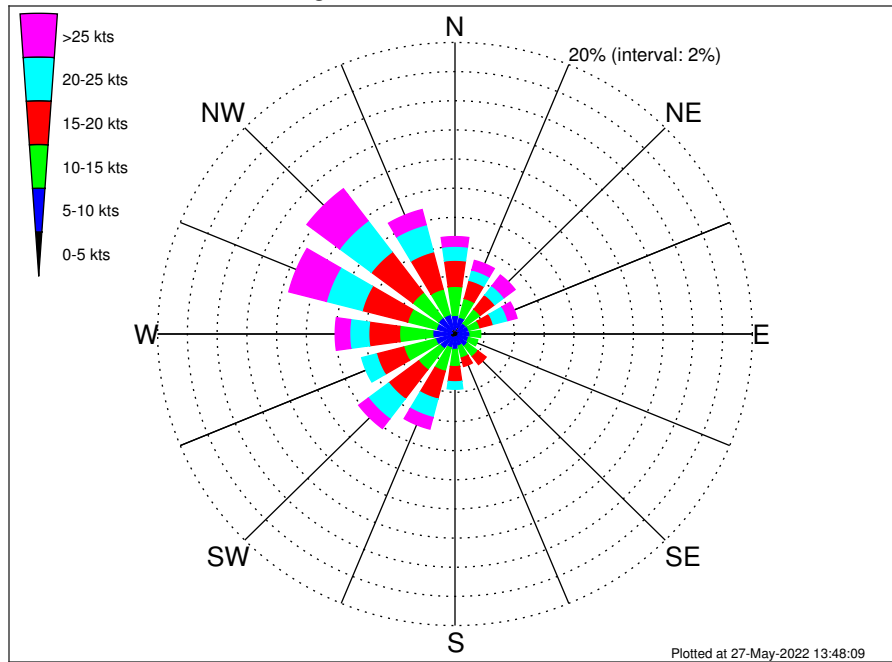
OCS-A 0538 Climatological WavePeriod Rose for November: 1979 - 2015



Joint Frequency Distribution Table

	N	NNE	NE	ENE	E	ESE	SE	SSE	S	SSW	SW	WSW	W	WNW	NW	NNW	Total
calm	•	•	•	•	•	•	•	•	•	•	•	•	•	•	•	•	•
1 - 2 sec	•	•	•	•	•	•	•	•	•	•	•	•	•	•	•	•	•
2 - 4 sec	0.54	0.28	0.22	0.10	0.12	0.14	0.23	0.23	0.23	0.73	1.11	0.81	0.89	0.99	0.97	0.94	8.53
4 - 6 sec	2.80	2.76	2.87	1.31	0.43	0.53	0.79	0.92	1.27	5.80	3.21	1.35	1.63	2.98	4.18	4.64	37.48
6 - 8 sec	0.14	0.17	0.84	2.76	2.06	0.84	0.81	2.12	3.64	3.53	0.22	0.07	0.03	0.12	0.10	0.25	17.71
8 - 10 sec	•	•	0.01	2.35	5.09	5.95	3.87	2.38	1.92	0.03	•	•	•	•	•	•	21.61
10 - 12 sec	•	•	•	0.65	4.74	4.97	1.92	0.29	0.17	•	•	•	•	•	•	•	12.74
12 - 14 sec	•	•	•	•	0.82	0.81	0.09	•	•	•	•	•	•	•	•	•	1.72
14 - 16 sec	•	•	•	•	0.08	0.10	0.02	•	•	•	•	•	•	•	•	•	0.21
18 - 20 sec	•	•	•	•	•	•	•	•	•	•	•	•	•	•	•	•	•
22 - 24 sec	•	•	•	•	•	•	•	•	•	•	•	•	•	•	•	•	•
Total	3.48	3.21	3.94	7.17	13.33	13.35	7.73	5.94	7.24	10.09	4.54	2.23	2.55	4.09	5.26	5.83	100.00

OCS-A 0538 Climatological Wind Rose for November: 1979 - 2015



Joint Frequency Distribution Table

	N	NNE	NE	ENE	E	ESE	SE	SSE	S	SSW	SW	WSW	W	WNW	NW	NNW	Total
calm	•	0.02	0.02	0.02	•	0.03	•	0.01	•	•	•	0.01	0.01	0.02	0.01	0.01	0.18
0 - 5 kts	0.30	0.45	0.22	0.30	0.23	0.20	0.29	0.18	0.22	0.29	0.30	0.32	0.30	0.17	0.32	0.36	4.46
5 - 10 kts	0.98	0.73	0.67	0.64	0.79	0.72	0.75	0.66	0.84	0.69	0.95	1.02	1.19	1.11	1.05	1.01	13.79
10 - 15 kts	1.99	1.32	1.21	0.77	0.72	0.64	0.89	0.84	1.18	1.66	1.82	2.21	2.23	1.99	2.17	1.80	23.45
15 - 20 kts	1.79	1.28	1.23	0.92	0.49	0.46	0.69	0.60	1.04	1.97	2.52	1.90	2.07	3.16	3.49	2.65	26.25
20 - 25 kts	0.96	0.74	0.79	1.02	0.38	0.20	0.34	0.47	0.51	1.31	1.71	1.03	1.28	2.49	2.67	1.92	17.80
25 - 30 kts	0.44	0.38	0.49	0.30	0.09	0.22	0.16	0.24	0.35	0.59	0.71	0.44	0.73	1.75	1.95	0.90	9.73
30 - 35 kts	0.15	0.12	0.32	0.20	0.02	0.05	0.08	0.13	0.07	0.18	0.12	0.05	0.14	0.64	0.64	0.14	3.03
35 - 40 kts	0.07	0.13	0.10	0.14	0.02	0.01	0.02	0.06	0.02	0.02	•	0.01	0.07	0.20	0.16	0.03	1.08
40 - 45 kts	•	0.05	0.01	•	•	•	•	0.01	0.02	0.02	•	•	0.03	0.03	•	•	0.18
45 - 50 kts	•	•	•	•	0.01	•	•	0.02	•	•	•	•	•	•	•	•	0.03
Total	6.68	5.21	5.06	4.31	2.75	2.52	3.23	3.24	4.25	6.74	8.12	6.98	8.06	11.55	12.47	8.82	100.00