

OCS-A 0538 - October

Latitude: 39.71 N Longitude: 73.16 W

Weather Days

Wave Height > 3.0 ft Mean: 22.3 days Range: 20.2 - 24.5 days p10:26 days p50:22.5 days p90:20.5 days

Wave Height > 4.0 ft Mean: 16.3 days Range: 13.5 - 19.0 days p10:20 days p50:16.5 days p90:13 days

Wave Height > 5.0 ft Mean: 11.1 days Range: 8.5 - 13.7 days p10:15 days p50:11 days p90:8.5 days

Wind Speed > 20.0 knots Mean: 6.8 days Range: 5.0 - 8.5 days p10:9.5 days p50:7 days p90:5 days

Wind Speed > 25.0 knots Mean: 2.3 days Range: 1.2 - 3.4 days p10:4 days p50:2.5 days p90:1 days

Wind Speed > 30.0 knots Mean: 0.7 days Range: 0.2 - 1.3 days p10:2 days p50:1 days p90:0.5 days

Working Window Probability

Wave Height < 3.0 ft 3 days or longer: 13%
 5 days or longer: 0%
 7 days or longer: 0%

Wave Height < 4.0 ft 3 days or longer: 29%
 5 days or longer: 4%
 7 days or longer: 1%

Wave Height < 5.0 ft 3 days or longer: 42%
 5 days or longer: 11%
 7 days or longer: 4%

Waves

Mean Height: 4 - 6 ft

The wave heights will occasionally reach 12 - 14 ft, but rarely higher.

Mean Period: 6 - 8 sec

The wave periods will occasionally reach 12 - 14 sec, but rarely longer.

Principle Direction, from: ESE

WindSea/Swell: 34% / 66%

Winds

Mean Speed: 10 - 15 kts

The winds will occasionally reach 35 - 40 kts, but rarely greater.

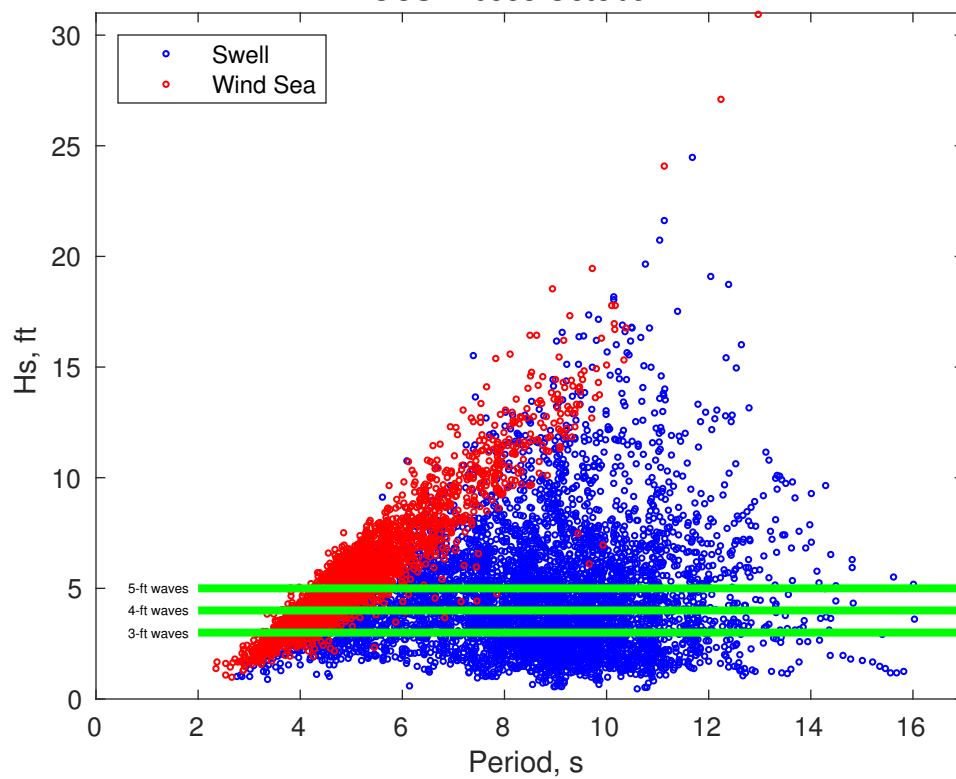
Principle Direction, from: NW

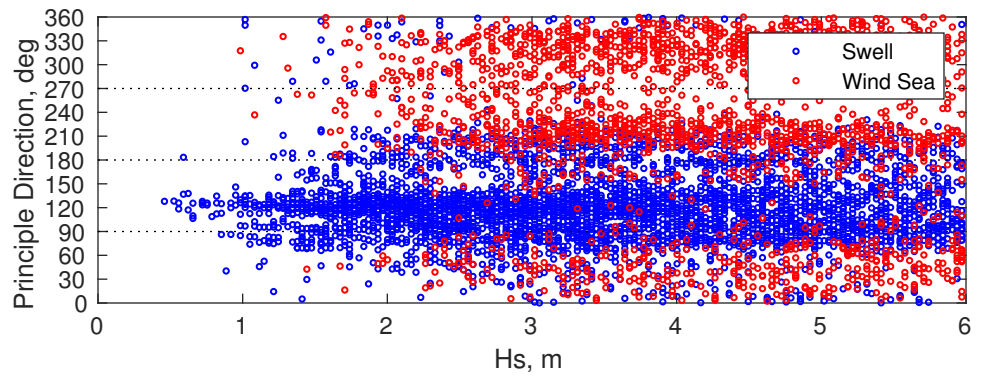
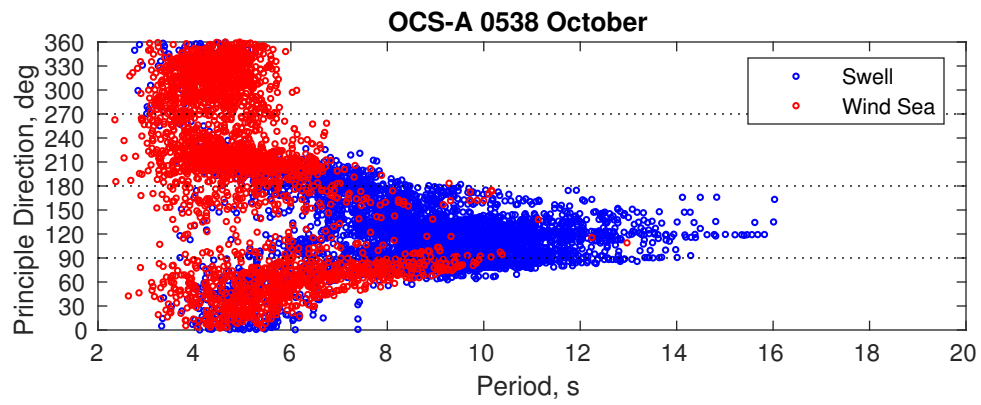
Severe Storms

There is a 39 % chance of a storm occurring in the month with winds peaking above 34 kts.

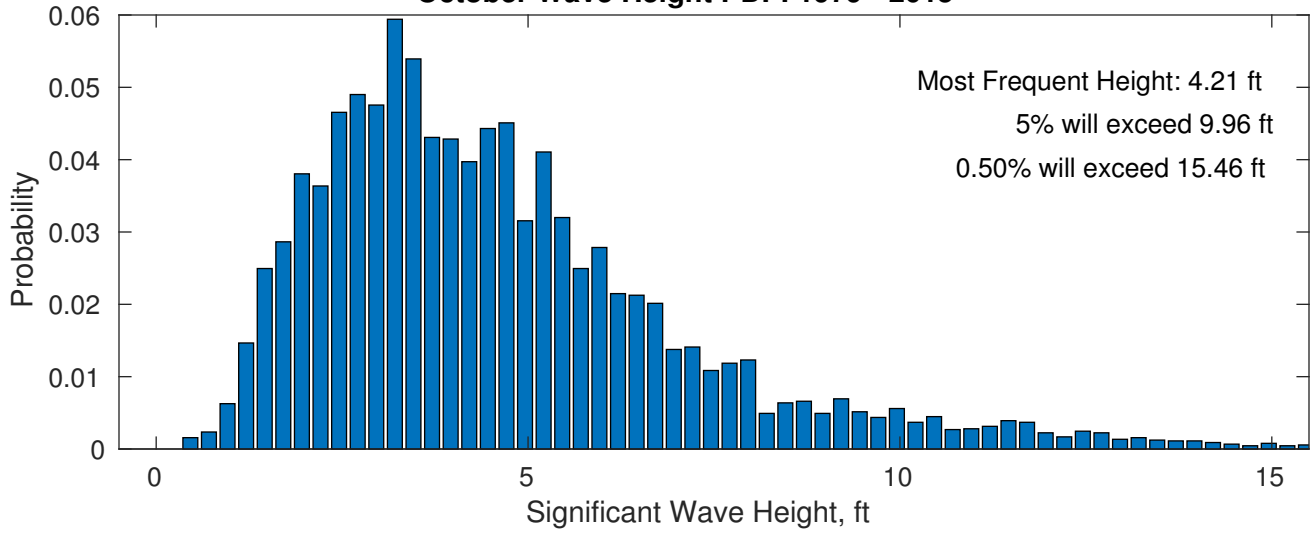
There is a 44 % chance of a storm occurring in the month with waves peaking at 4m (13 ft) or greater.

OCS-A 0538 October

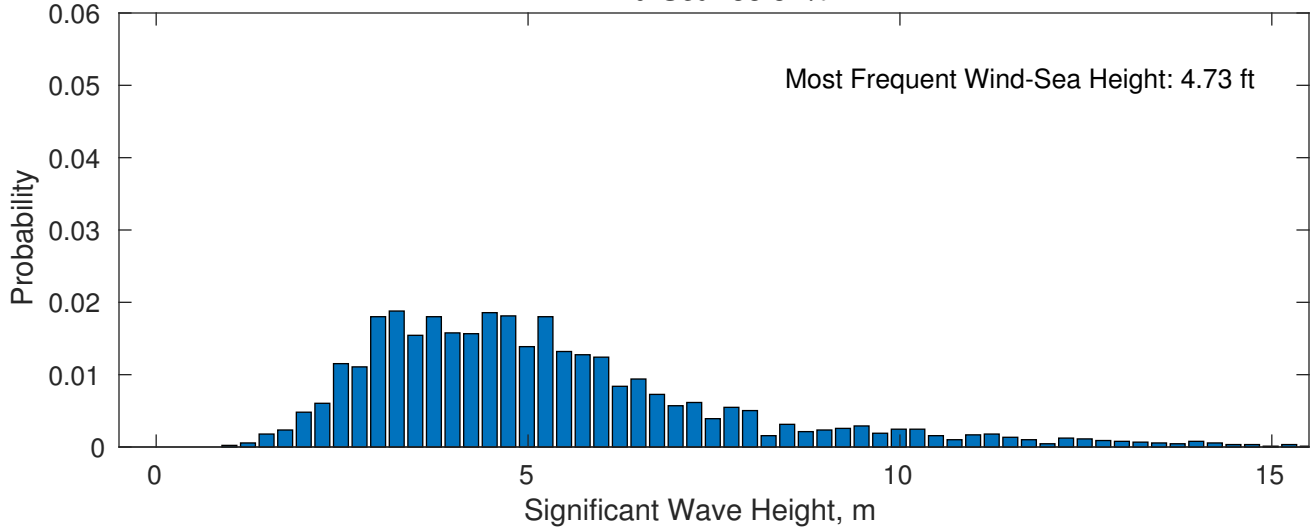




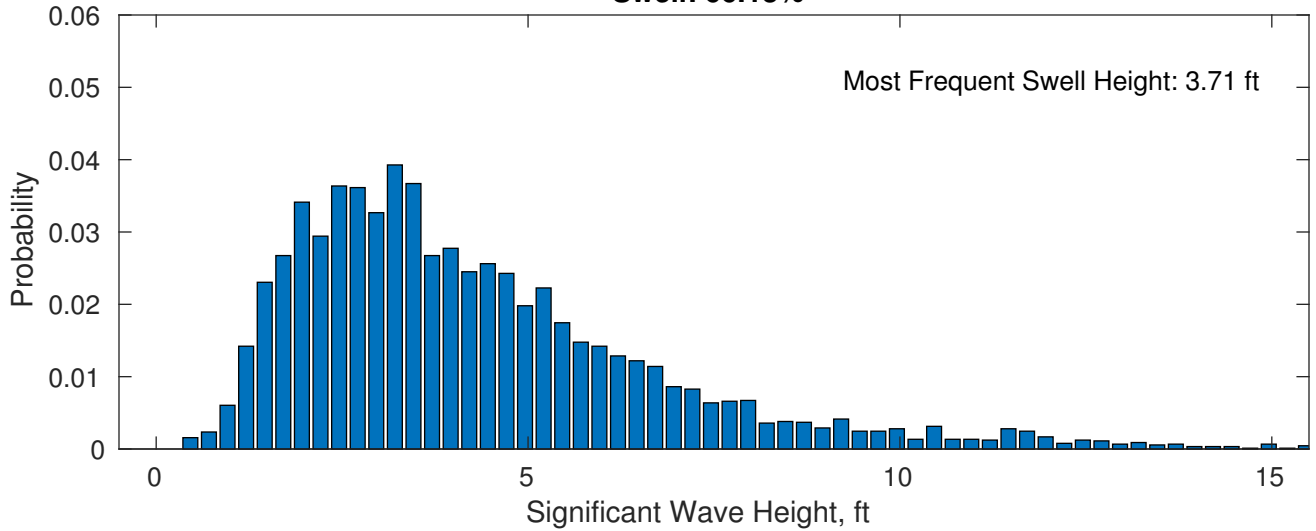
October Wave Height PDF: 1979 - 2015



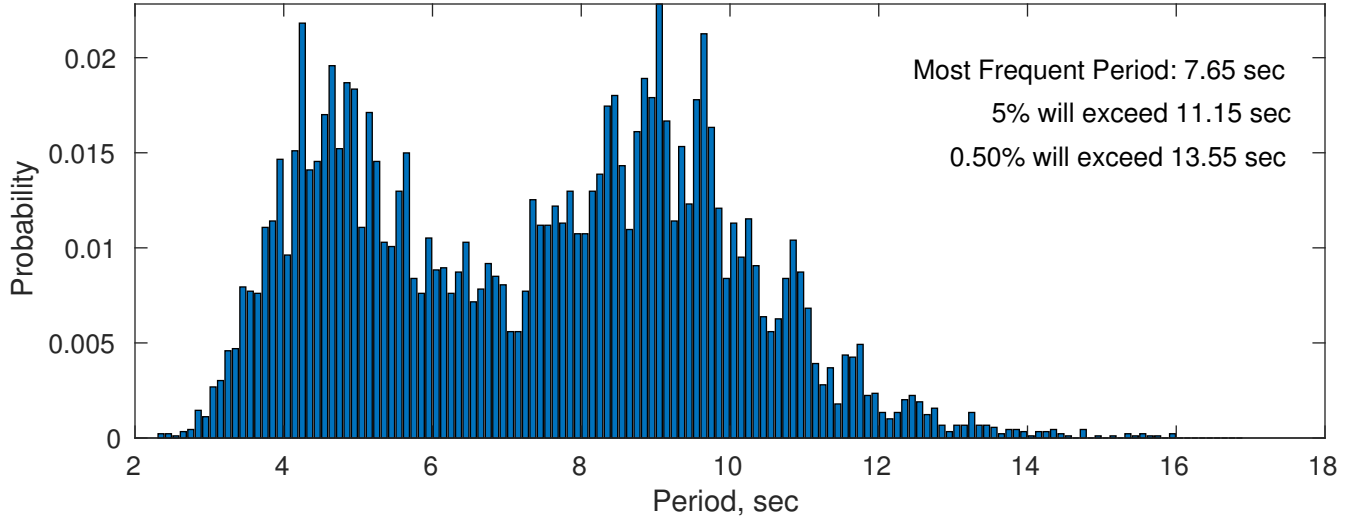
Wind-Sea: 33.87%



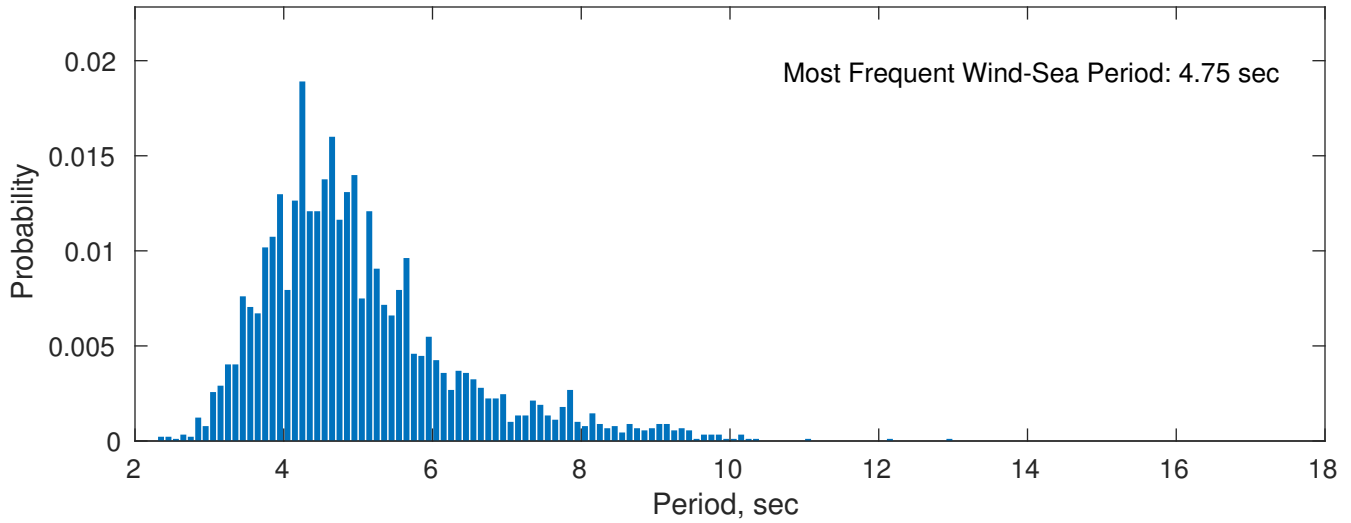
Swell: 66.13%



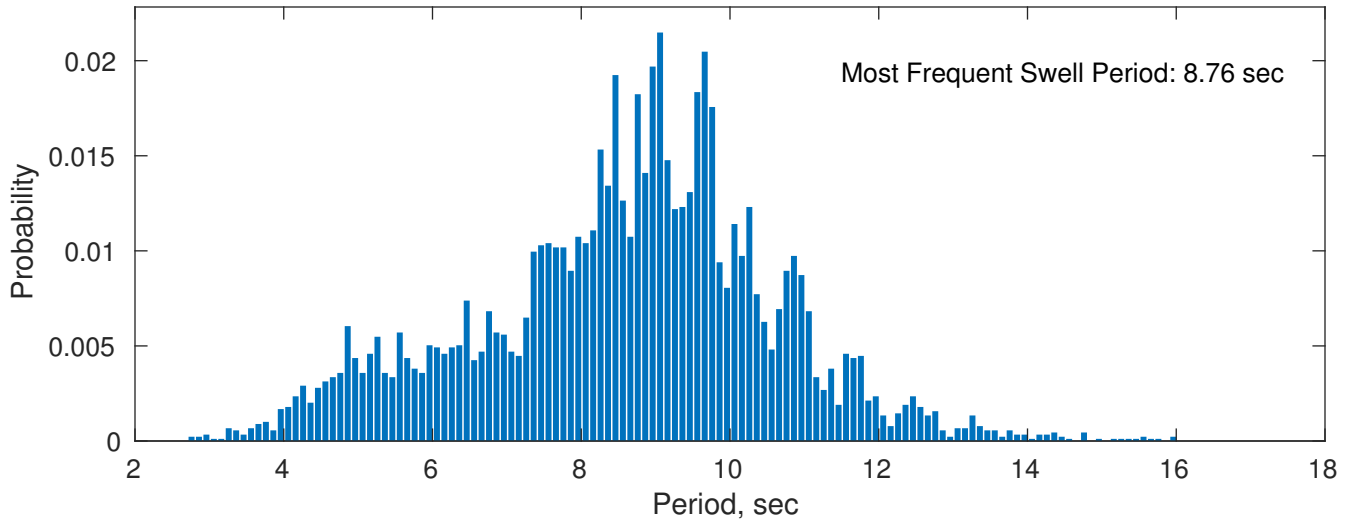
October Peak Wave Period PDF: 1979 - 2015



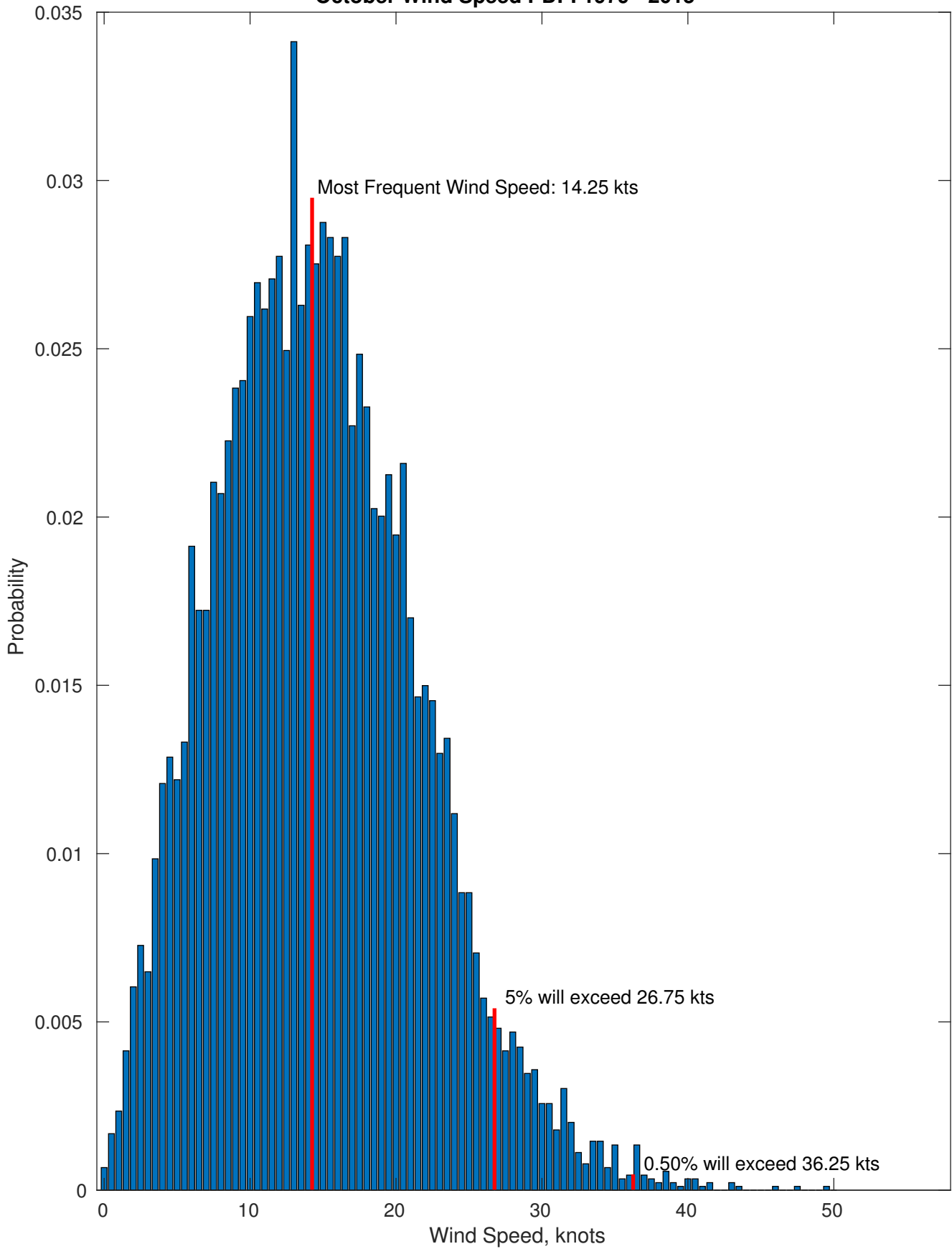
Wind-Sea: 33.87%



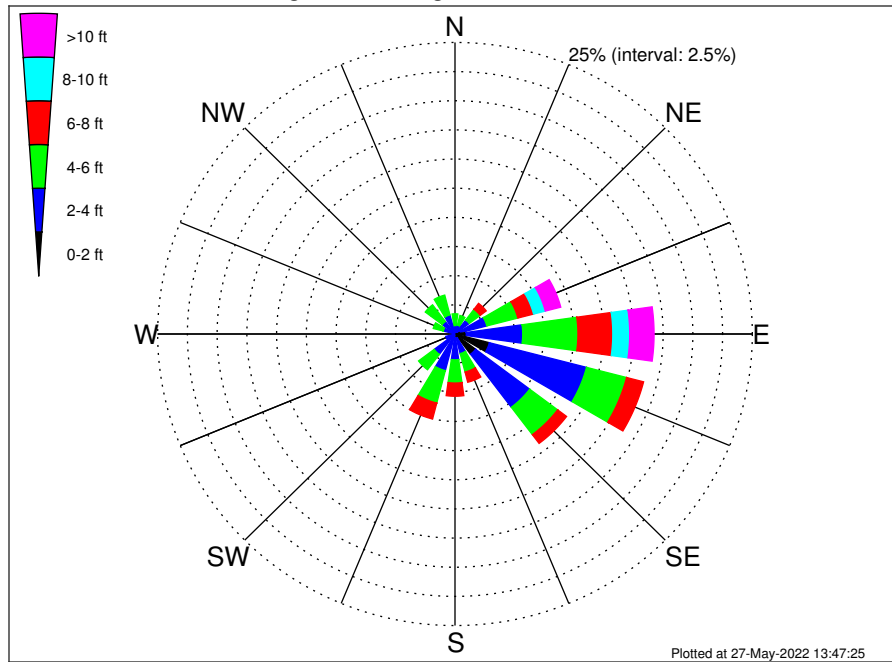
Swell: 66.13%



October Wind Speed PDF: 1979 - 2015



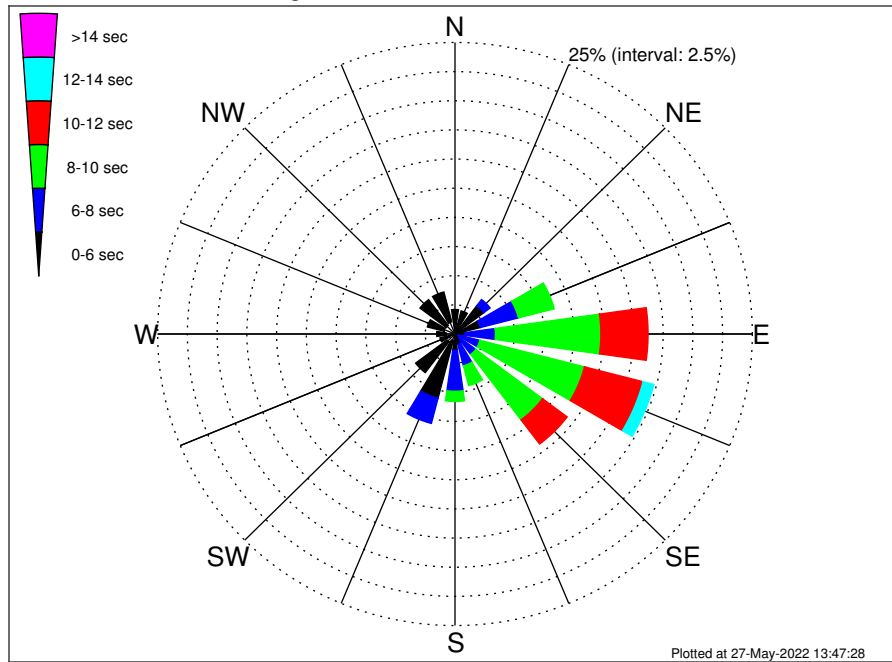
OCS-A 0538 Climatological WaveHeight Rose for October: 1979 - 2015



Joint Frequency Distribution Table

	N	NNE	NE	ENE	E	ESE	SE	SSE	S	SSW	SW	WSW	W	WNW	NW	NNW	Total
calm	•	•	0.01	•	0.04	0.15	0.23	•	0.01	•	•	•	•	•	0.01	•	0.46
1 - 2 ft	0.10	0.04	0.13	0.50	0.91	2.84	1.94	0.38	0.32	0.13	0.07	0.08	0.15	0.07	0.06	0.11	7.83
2 - 4 ft	0.63	0.74	1.35	2.26	4.74	8.44	5.69	1.35	1.88	3.11	2.13	0.73	0.60	0.95	1.28	1.58	37.46
4 - 6 ft	1.01	0.86	1.15	2.70	4.64	3.48	2.94	1.63	1.99	2.88	1.64	0.36	0.40	0.87	1.79	1.76	30.11
6 - 8 ft	0.36	0.49	0.64	1.36	2.93	1.48	0.94	0.91	1.13	1.41	0.43	0.16	0.34	0.50	0.50	0.27	13.84
8 - 10 ft	0.01	0.10	0.29	1.02	1.42	0.56	0.26	0.45	0.32	0.29	0.11	0.07	0.06	0.02	0.06	0.01	5.05
10 - 12 ft	0.01	0.04	0.10	0.86	1.06	0.26	0.19	0.17	0.09	0.08	0.04	0.03	•	0.01	•	•	2.95
12 - 14 ft	•	•	0.03	0.30	0.62	0.13	0.09	0.12	0.04	0.02	•	•	•	•	•	•	1.36
14 - 16 ft	0.01	•	•	0.11	0.20	0.04	0.01	0.09	0.02	•	•	•	•	•	•	•	0.49
16 - 18 ft	•	•	•	0.07	0.11	0.04	0.01	0.01	0.06	•	•	•	•	•	•	•	0.30
> 18 ft	•	•	•	•	0.06	0.04	0.02	0.01	0.01	•	•	•	•	•	•	•	0.15
Total	2.13	2.28	3.71	9.19	16.74	17.46	12.33	5.12	5.88	7.92	4.42	1.42	1.54	2.43	3.69	3.73	100.00

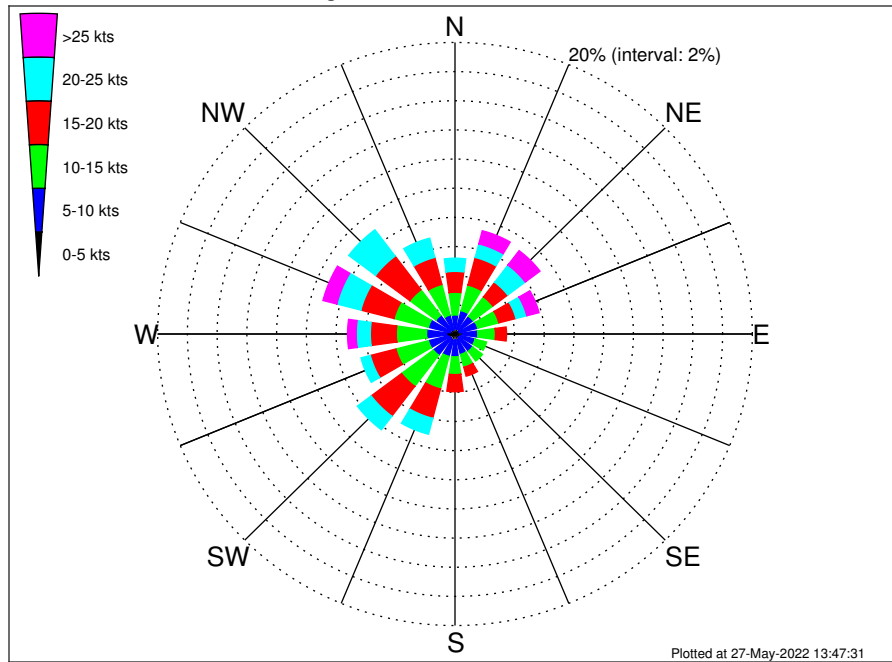
OCS-A 0538 Climatological WavePeriod Rose for October: 1979 - 2015



Joint Frequency Distribution Table

	N	NNE	NE	ENE	E	ESE	SE	SSE	S	SSW	SW	WSW	W	WNW	NW	NNW	Total
calm	•	•	•	•	•	•	•	•	•	•	•	•	•	•	•	•	•
1 - 2 sec	•	•	•	•	•	•	•	•	•	•	•	•	•	•	•	•	•
2 - 4 sec	0.26	0.20	0.28	0.23	0.11	0.07	0.07	0.17	0.20	0.59	0.84	0.50	0.75	0.96	0.93	1.07	7.24
4 - 6 sec	1.85	1.85	2.75	1.97	0.73	0.30	0.18	0.73	1.21	5.09	3.31	0.81	0.79	1.44	2.76	2.65	28.42
6 - 8 sec	0.02	0.23	0.67	3.31	2.56	1.79	1.95	1.91	3.50	2.24	0.27	0.11	•	0.02	•	•	18.59
8 - 10 sec	•	•	0.01	3.10	8.86	9.08	7.03	1.76	0.87	•	•	•	•	•	•	•	30.71
10 - 12 sec	•	•	•	0.57	3.97	5.09	2.60	0.32	0.10	•	•	•	•	•	•	•	12.65
12 - 14 sec	•	•	•	•	0.48	0.94	0.45	0.17	•	•	•	•	•	•	•	•	2.04
14 - 16 sec	•	•	•	•	0.02	0.19	0.06	0.06	•	•	•	•	•	•	•	•	0.32
18 - 20 sec	•	•	•	•	•	•	0.01	0.01	•	•	•	•	•	•	•	•	0.02
22 - 24 sec	•	•	•	•	•	•	•	•	•	•	•	•	•	•	•	•	•
Total	2.13	2.28	3.71	9.19	16.74	17.46	12.33	5.12	5.88	7.92	4.42	1.42	1.54	2.43	3.69	3.73	100.00

OCS-A 0538 Climatological Wind Rose for October: 1979 - 2015



Joint Frequency Distribution Table

	N	NNE	NE	ENE	E	ESE	SE	SSE	S	SSW	SW	WSW	W	WNW	NW	NNW	Total
calm	0.03	•	0.03	0.03	0.03	0.01	•	0.01	0.02	•	•	•	0.01	0.02	•	0.02	0.23
0 - 5 kts	0.34	0.36	0.35	0.28	0.47	0.41	0.31	0.46	0.38	0.46	0.39	0.40	0.55	0.32	0.36	0.27	6.11
5 - 10 kts	0.94	1.30	1.14	1.26	1.03	0.97	1.16	0.97	1.16	1.13	1.43	1.44	1.35	1.50	1.24	1.05	19.10
10 - 15 kts	1.56	1.81	1.67	1.47	1.19	0.79	0.84	0.91	1.22	2.30	2.67	2.26	2.04	2.39	2.20	2.17	27.49
15 - 20 kts	1.43	1.96	1.25	1.20	0.75	0.46	0.41	0.64	1.17	2.08	2.56	1.78	1.75	2.30	2.89	1.91	24.55
20 - 25 kts	0.91	0.96	1.48	0.75	0.47	0.29	0.11	0.27	0.45	1.13	1.16	0.65	0.95	1.67	2.26	1.36	14.87
25 - 30 kts	0.28	0.55	0.87	0.47	0.04	0.12	0.09	0.08	0.18	0.19	0.30	0.18	0.34	0.75	0.45	0.28	5.17
30 - 35 kts	0.13	0.25	0.21	0.28	0.02	0.03	0.02	0.04	0.04	0.06	0.09	0.12	0.19	0.19	0.04	0.01	1.75
35 - 40 kts	0.03	0.12	0.09	0.09	•	0.01	•	0.03	0.07	•	•	0.02	0.06	•	•	0.01	0.54
40 - 45 kts	0.01	0.01	0.04	0.01	•	•	0.01	0.01	•	•	•	•	•	0.02	•	0.01	0.13
45 - 50 kts	•	•	0.02	•	0.01	•	•	0.01	0.01	•	•	•	•	•	•	0.01	0.07
Total	5.66	7.32	7.16	5.84	4.02	3.11	2.96	3.43	4.71	7.35	8.61	6.86	7.23	9.17	9.44	7.12	100.00