

Orsted OCW02 - April

Latitude: 39.06 N Longitude: 74.47 W

Weather Days

Wave Height > 3.0 ft Mean: 15.6 days Range: 11.6 - 19.7 days p10:22 days p50:15.5 days p90:12 days
Wave Height > 4.0 ft Mean: 10.0 days Range: 5.9 - 14.1 days p10:17 days p50:10 days p90:6.5 days
Wave Height > 5.0 ft Mean: 6.0 days Range: 2.6 - 9.4 days p10:11 days p50:6 days p90:2.5 days
Wind Speed > 20.0 knots Mean: 2.9 days Range: 1.2 - 4.6 days p10:5.5 days p50:2.5 days p90:1 days
Wind Speed > 25.0 knots Mean: 0.7 days Range: 0.0 - 1.4 days p10:2 days p50:1 days p90:0.5 days
Wind Speed > 30.0 knots Mean: 0.1 days Range: 0.0 - 0.3 days p10:0.5 days p50:0.5 days p90:0.5 days

Working Window Probability

Wave Height < 3.0 ft 3 days or longer: 33%
 5 days or longer: 6%
 7 days or longer: 2%

Wave Height < 4.0 ft 3 days or longer: 52%
 5 days or longer: 14%
 7 days or longer: 8%

Wave Height < 5.0 ft 3 days or longer: 66%
 5 days or longer: 31%
 7 days or longer: 19%

Waves

Mean Height: 2 - 4 ft
The wave heights will occasionally reach 8 - 10 ft, but rarely higher.
Mean Period: 6 - 8 sec
The wave periods will occasionally reach 12 - 14 sec, but rarely longer.
Principle Direction, from: E
WindSea/Swell: 24% / 76%

Winds

Mean Speed: 10 - 15 kts
The winds will occasionally reach 25 - 30 kts, but rarely greater.
Principle Direction, from: SSW

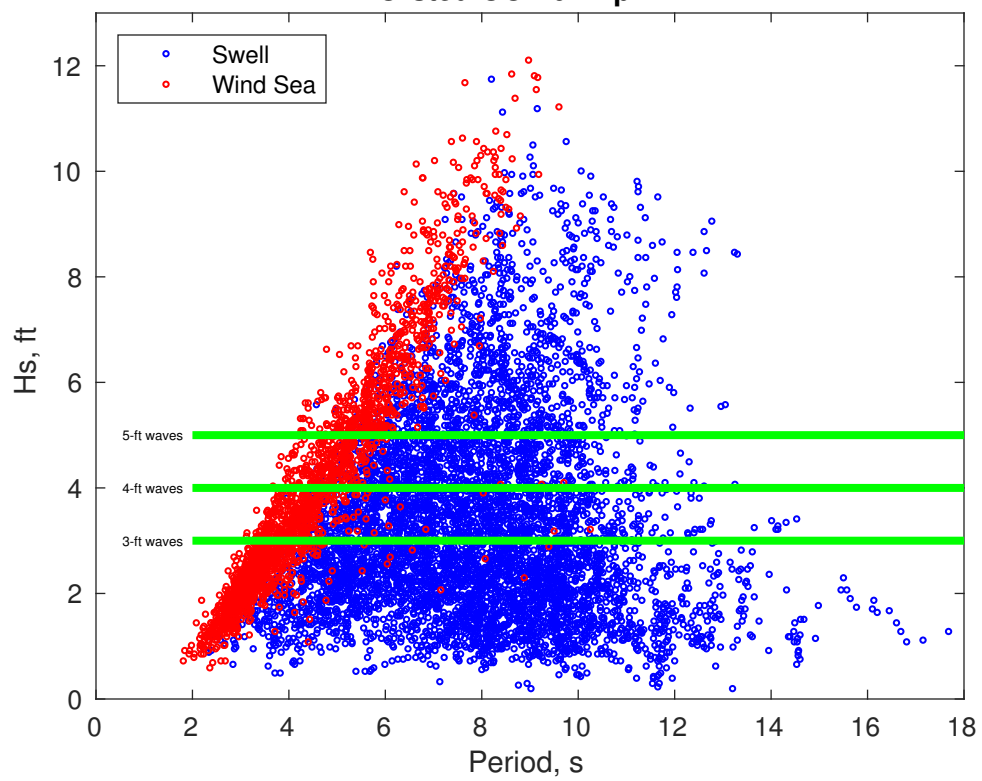
Currents

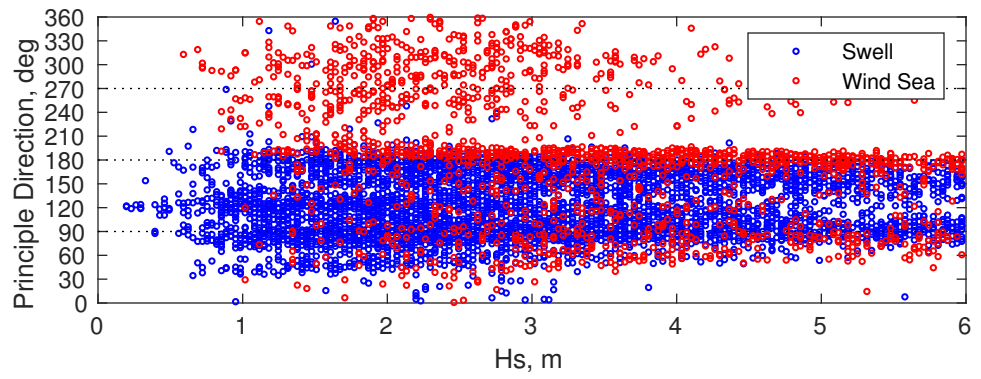
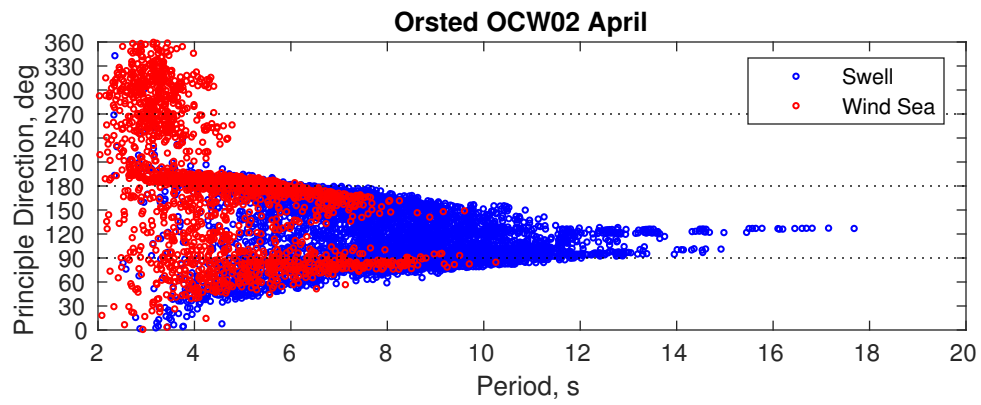
Mean Speed: 0.25-0.50 kts
The currents will occasionally reach 1.25-1.50 kts, but rarely greater.
Principle Direction, to: NE
Current Speed > 1.0 knots Mean: 1.6 days Range: 0.0 - 3.6 days p10:6 days p50:1.625 days p80:1 days
Current Speed > 1.5 knots Mean: 0.1 days Range: 0.0 - 0.3 days p10:1 days p50:0.0625 days p80:1 days
Current Speed > 2.0 knots Mean: 0.0 days Range: 0.0 - 0.0 days p10:1 days p50:0 days p80:1 days

Severe Storms

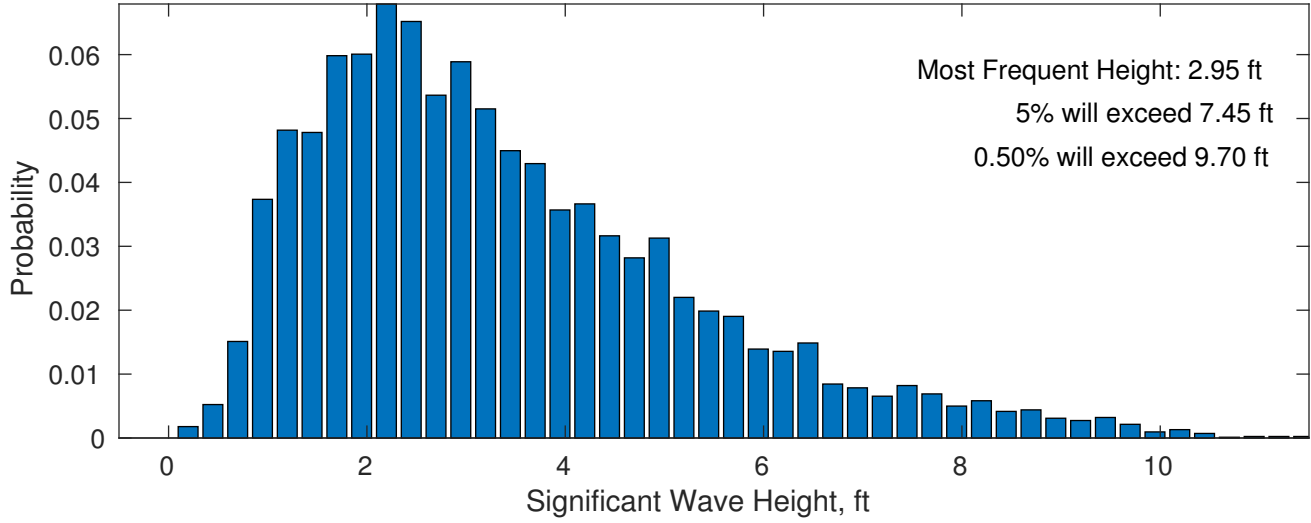
Severe storms with gale force winds and extreme waves are not expected during this month.

Orsted OCW02 April

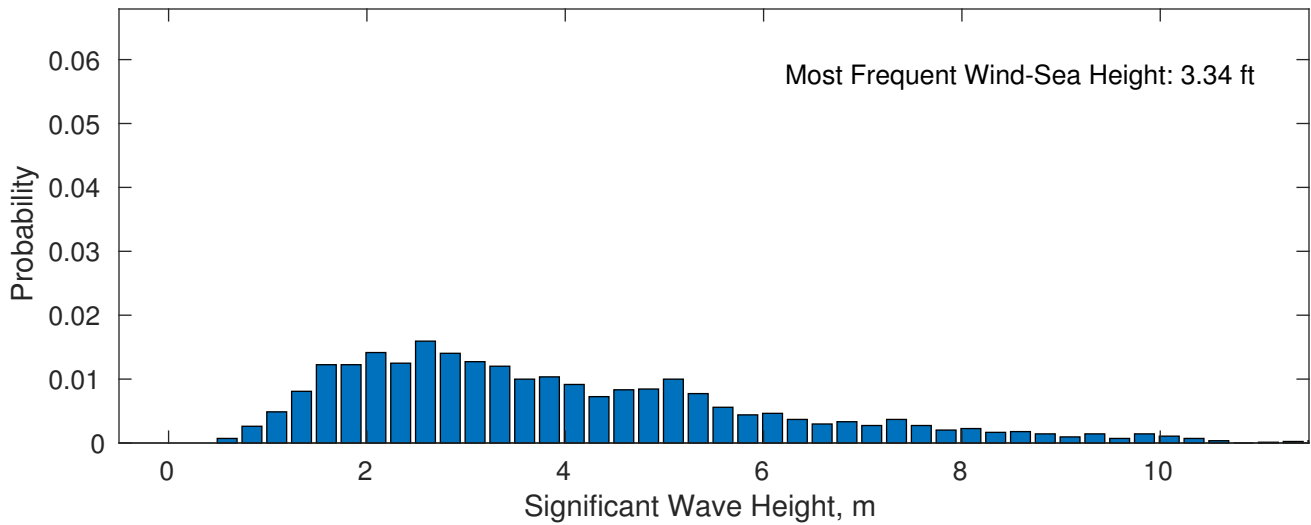




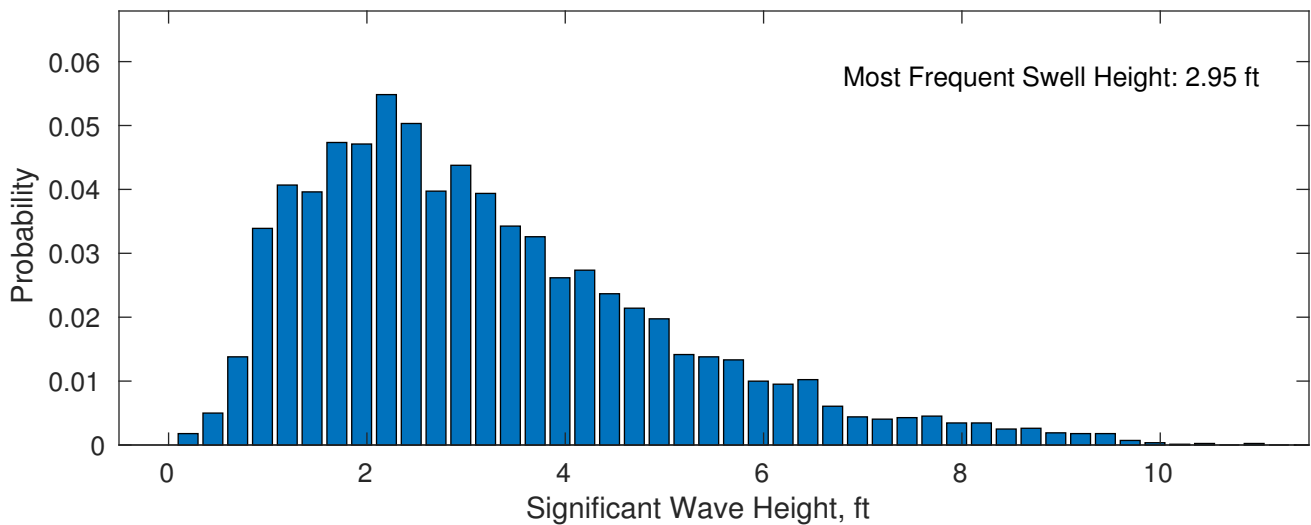
April Wave Height PDF: 1979 - 2015



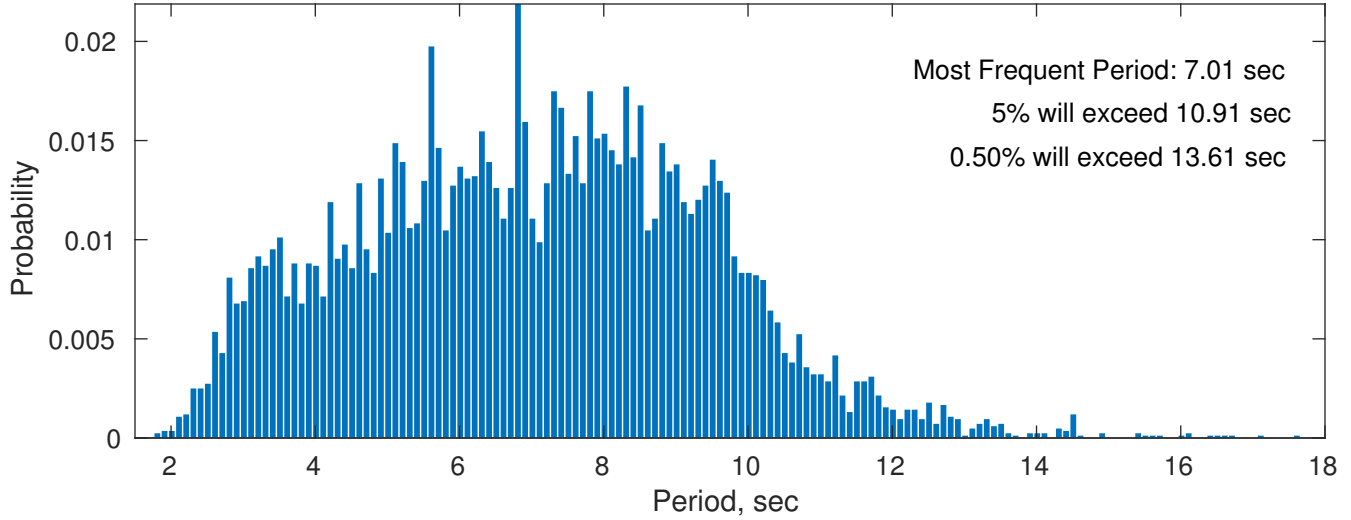
Wind-Sea: 24.40%



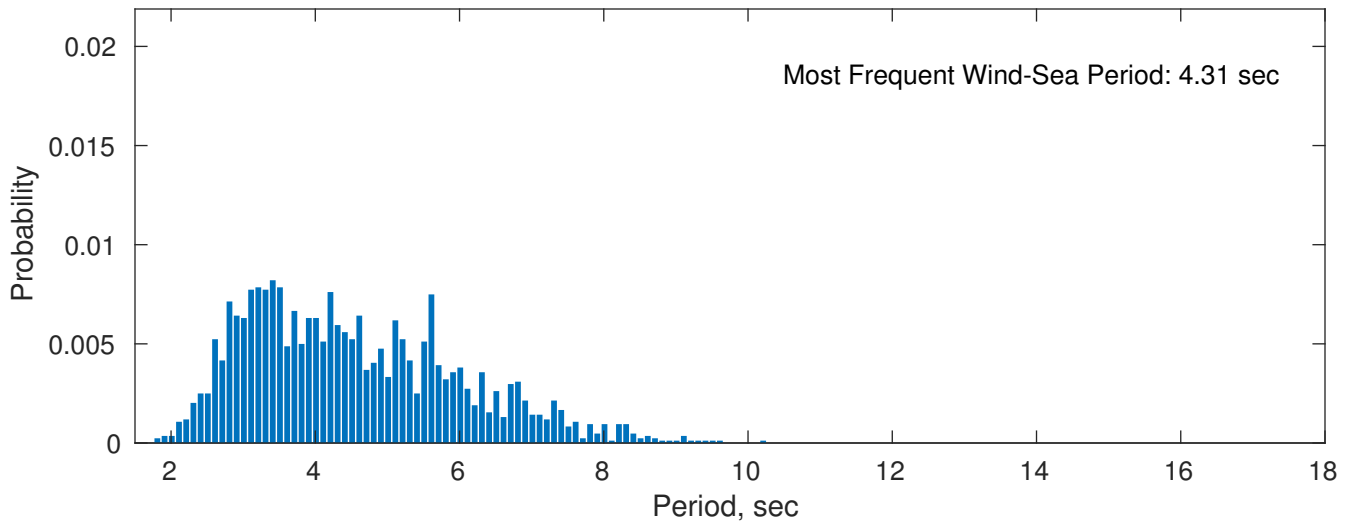
Swell: 75.60%



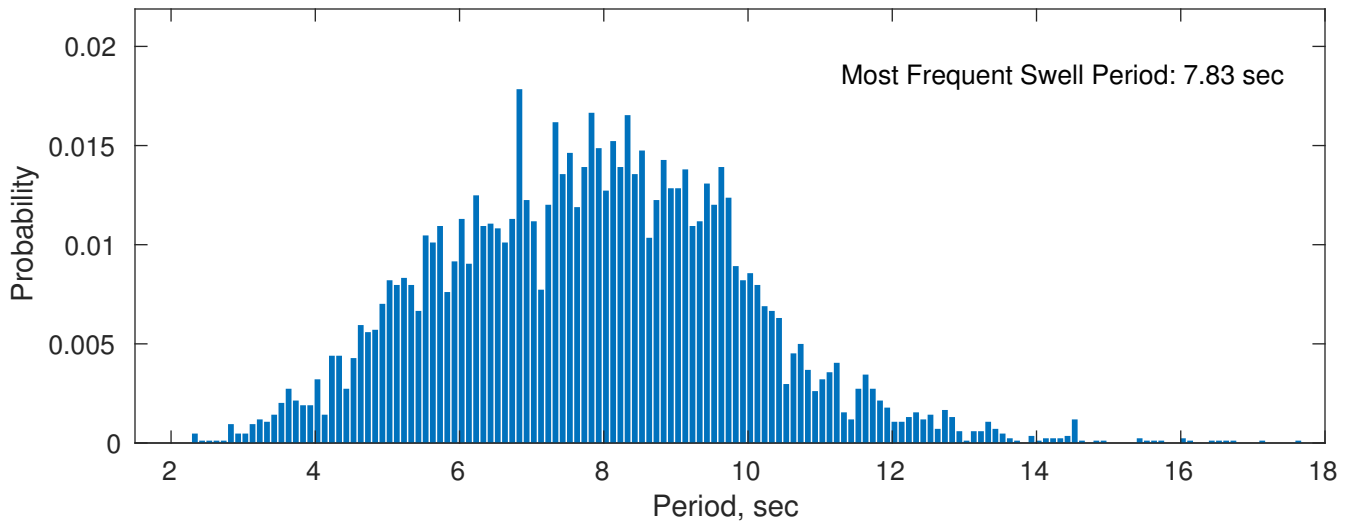
April Peak Wave Period PDF: 1979 - 2015



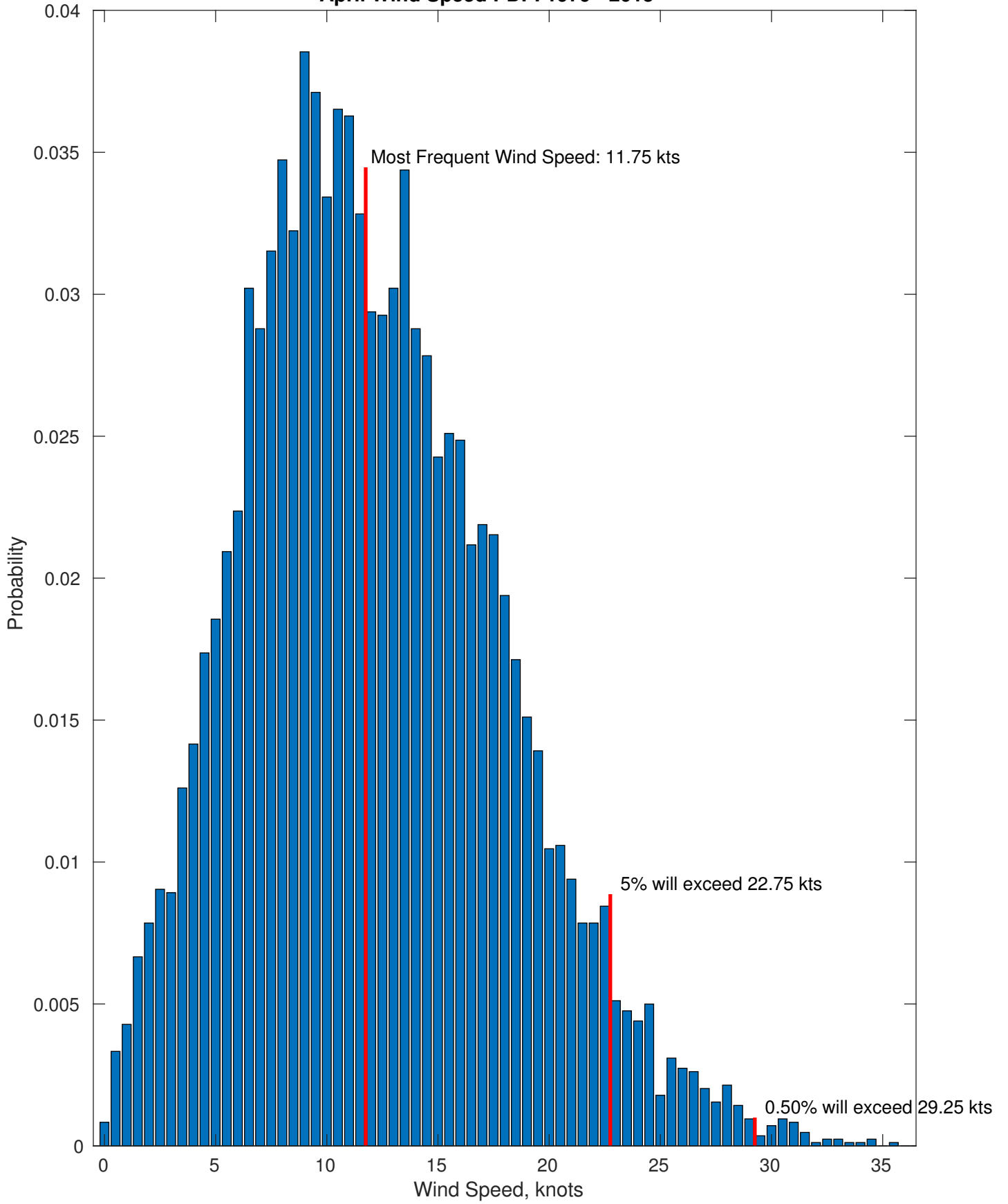
Wind-Sea: 24.40%



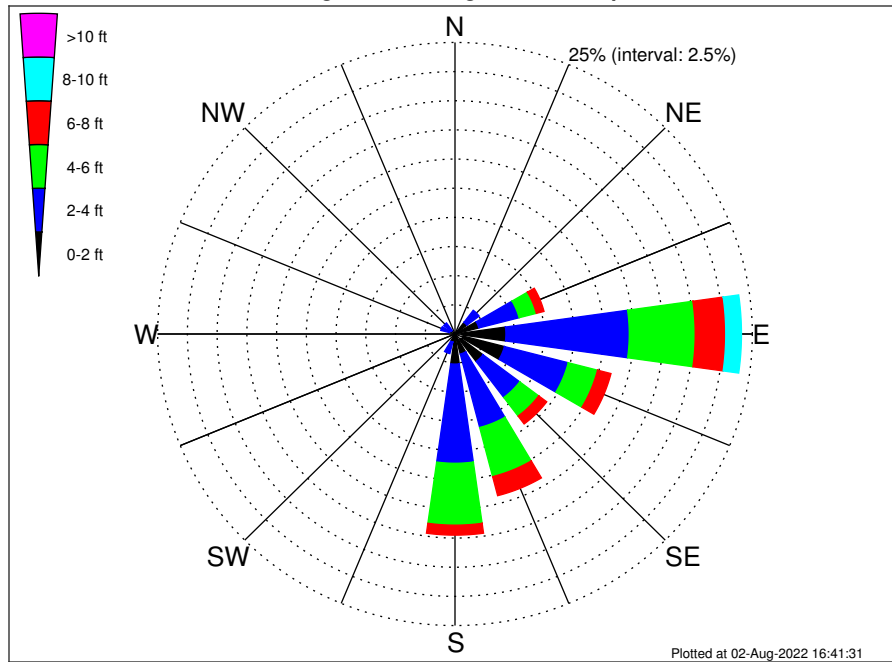
Swell: 75.60%



April Wind Speed PDF: 1979 - 2015



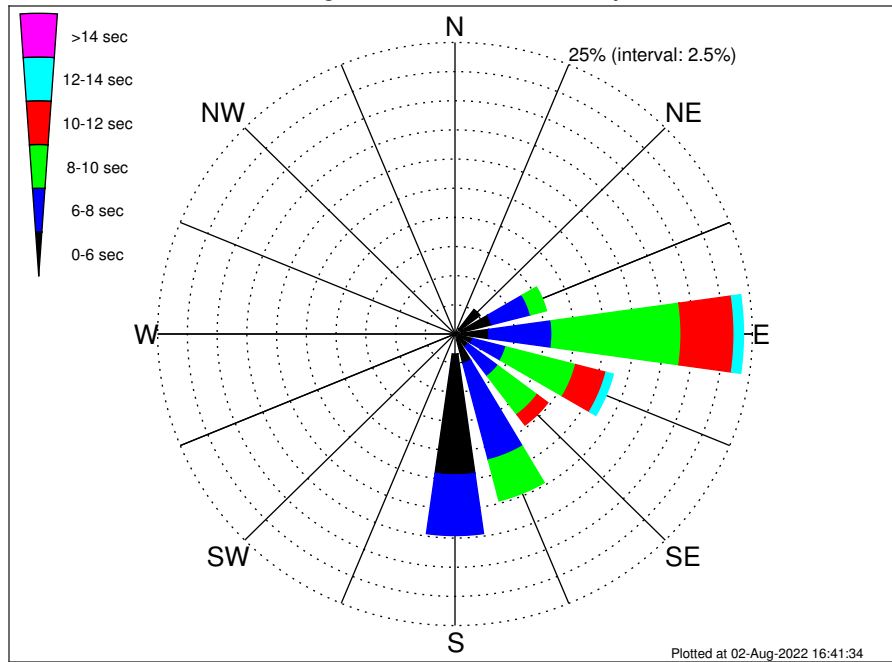
Orsted OCW02 Climatological WaveHeight Rose for April: 1979 - 2015



Joint Frequency Distribution Table

	N	NNE	NE	ENE	E	ESE	SE	SSE	S	SSW	SW	WSW	W	WNW	NW	NNW	Total
calm	0.01	•	0.17	0.19	0.55	0.71	0.63	0.13	0.24	0.05	0.07	0.05	0.01	0.10	0.02	•	2.93
1 - 2 ft	0.08	0.10	1.08	1.88	3.73	3.58	2.32	1.64	2.34	0.67	0.19	0.43	0.40	0.40	0.36	0.19	19.40
2 - 4 ft	0.26	0.25	1.30	3.50	10.37	5.54	3.87	6.51	8.50	1.02	0.19	0.54	0.57	0.74	0.81	0.34	44.31
4 - 6 ft	0.01	0.01	0.20	1.50	5.54	2.55	2.00	4.35	5.31	0.18	0.04	0.18	0.07	0.02	0.19	0.01	22.16
6 - 8 ft	•	•	0.01	0.67	2.57	1.17	0.84	1.69	0.86	•	•	0.01	•	•	•	•	7.81
8 - 10 ft	•	•	•	0.18	1.32	0.31	0.54	0.56	0.06	•	•	•	•	•	•	•	2.96
10 - 12 ft	•	•	•	0.04	0.25	0.05	0.02	0.06	•	•	•	•	•	•	•	•	0.42
12 - 14 ft	•	•	•	•	0.01	•	•	•	•	•	•	•	•	•	•	•	0.01
14 - 16 ft	•	•	•	•	•	•	•	•	•	•	•	•	•	•	•	•	•
16 - 18 ft	•	•	•	•	•	•	•	•	•	•	•	•	•	•	•	•	•
> 18 ft	•	•	•	•	•	•	•	•	•	•	•	•	•	•	•	•	•
Total	0.37	0.36	2.76	7.95	24.35	13.91	10.22	14.94	17.31	1.92	0.49	1.20	1.06	1.26	1.38	0.55	100.00

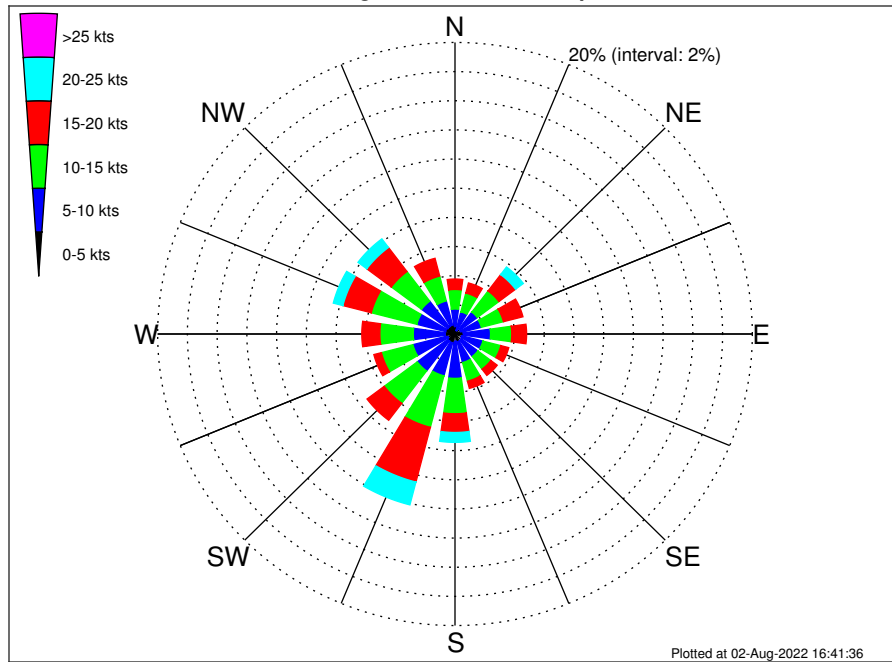
Orsted OCW02 Climatological WavePeriod Rose for April: 1979 - 2015



Joint Frequency Distribution Table

	N	NNE	NE	ENE	E	ESE	SE	SSE	S	SSW	SW	WSW	W	WNW	NW	NNW	Total
calm	•	•	•	•	•	•	•	•	•	•	•	•	•	•	•	•	•
1 - 2 sec	•	•	•	•	•	0.01	•	•	0.01	•	0.01	•	•	0.02	•	•	0.06
2 - 4 sec	0.36	0.32	0.51	0.56	0.55	0.36	0.32	0.49	1.70	1.30	0.39	1.01	1.01	1.23	1.24	0.55	11.88
4 - 6 sec	0.01	0.04	2.13	2.62	2.30	1.17	1.06	2.11	10.36	0.62	0.08	0.19	0.05	0.01	0.14	•	22.87
6 - 8 sec	•	•	0.12	3.38	5.32	2.88	3.13	8.56	5.21	•	•	•	•	•	•	•	28.60
8 - 10 sec	•	•	•	1.39	10.85	6.07	4.14	3.63	0.02	•	•	•	•	•	•	•	26.10
10 - 12 sec	•	•	•	•	4.46	2.64	1.13	0.15	•	•	•	•	•	•	•	•	8.39
12 - 14 sec	•	•	•	•	0.79	0.63	0.24	•	•	•	•	•	•	•	•	•	1.65
14 - 16 sec	•	•	•	•	0.10	0.15	0.10	•	•	•	•	•	•	•	•	•	0.34
18 - 20 sec	•	•	•	•	•	•	0.11	•	•	•	•	•	•	•	•	•	0.11
22 - 24 sec	•	•	•	•	•	•	•	•	•	•	•	•	•	•	•	•	•
Total	0.37	0.36	2.76	7.95	24.35	13.91	10.22	14.94	17.31	1.92	0.49	1.20	1.06	1.26	1.38	0.55	100.00

Orsted OCW02 Climatological Wind Rose for April: 1979 - 2015



Joint Frequency Distribution Table

	N	NNE	NE	ENE	E	ESE	SE	SSE	S	SSW	SW	WSW	W	WNW	NW	NNW	Total
calm	•	0.01	0.02	0.01	0.02	0.01	0.05	0.04	0.01	0.02	0.04	0.02	0.02	0.05	0.04	0.05	0.42
0 - 5 kts	0.51	0.24	0.42	0.40	0.54	0.45	0.49	0.52	0.49	0.59	0.57	0.48	0.63	0.61	0.57	0.58	8.09
5 - 10 kts	1.20	1.32	1.44	1.42	1.83	1.47	1.39	1.46	2.55	2.34	2.57	2.43	2.15	2.00	2.21	1.71	29.50
10 - 15 kts	1.34	1.33	1.82	1.53	1.43	1.25	1.09	1.32	2.43	3.65	2.78	2.19	2.25	3.16	2.55	1.76	31.89
15 - 20 kts	0.71	0.71	1.40	1.36	1.00	0.55	0.54	0.51	1.28	3.88	1.45	0.52	1.21	1.97	2.07	1.26	20.44
20 - 25 kts	0.24	0.25	0.65	0.46	0.25	0.18	0.24	0.29	0.68	1.62	0.39	0.11	0.30	0.67	0.74	0.33	7.39
25 - 30 kts	0.04	0.08	0.24	0.27	0.06	0.04	0.07	0.06	0.10	0.24	0.02	0.01	0.11	0.19	0.18	0.17	1.87
30 - 35 kts	0.01	0.01	0.05	0.04	0.01	•	0.04	0.05	0.04	0.05	•	•	0.04	0.02	0.05	0.01	0.40
35 - 40 kts	•	•	•	•	•	•	•	•	•	•	•	•	•	0.01	•	•	0.01
40 - 45 kts	•	•	•	•	•	•	•	•	•	•	•	•	•	•	•	•	•
45 - 50 kts	•	•	•	•	•	•	•	•	•	•	•	•	•	•	•	•	•
Total	4.06	3.96	6.04	5.50	5.14	3.95	3.90	4.25	7.57	12.39	7.83	5.76	6.71	8.68	8.40	5.88	100.00