

Orsted OCW02 - July

Latitude: 39.06 N Longitude: 74.47 W

Weather Days

Wave Height > 3.0 ft Mean: 9.2 days Range: 5.6 - 12.7 days p10:14 days p50:10 days p90:5 days

Wave Height > 4.0 ft Mean: 3.1 days Range: 0.9 - 5.3 days p10:6.5 days p50:3 days p90:0.5 days

Wave Height > 5.0 ft Mean: 1.0 days Range: 0.0 - 2.1 days p10:3 days p50:1 days p90:0.5 days

Wind Speed > 20.0 knots Mean: 0.3 days Range: 0.0 - 0.7 days p10:1.5 days p50:0.5 days p90:0.5 days

Wind Speed > 25.0 knots Mean: 0.0 days Range: 0.0 - 0.2 days p10:0.5 days p50:0.5 days p90:0.5 days

Wind Speed > 30.0 knots Mean: 0.0 days Range: 0.0 - 0.0 days p10:0.5 days p50:0.5 days p90:0.5 days

Working Window Probability

Wave Height < 3.0 ft 3 days or longer: 48%
 5 days or longer: 14%
 7 days or longer: 7%

Wave Height < 4.0 ft 3 days or longer: 71%
 5 days or longer: 41%
 7 days or longer: 33%

Wave Height < 5.0 ft 3 days or longer: 77%
 5 days or longer: 63%
 7 days or longer: 56%

Waves

Mean Height: 2 - 4 ft

The wave heights will occasionally reach 6 - 8 ft, but rarely higher.

Mean Period: 6 - 8 sec

The wave periods will occasionally reach 12 - 14 sec, but rarely longer.

Principle Direction, from: S

WindSea/Swell: 10% / 90%

Winds

Mean Speed: 5 - 10 kts

The winds will occasionally reach 20 - 25 kts, but rarely greater.

Principle Direction, from: SSW

Currents

Mean Speed: 0.25-0.50 kts

The currents will occasionally reach 1.25-1.50 kts, but rarely greater.

Principle Direction, to: NE

Current Speed > 1.0 knots Mean: 1.4 days Range: 0.1 - 2.8 days p10:4 days p50:1.4375 days p80:1 days

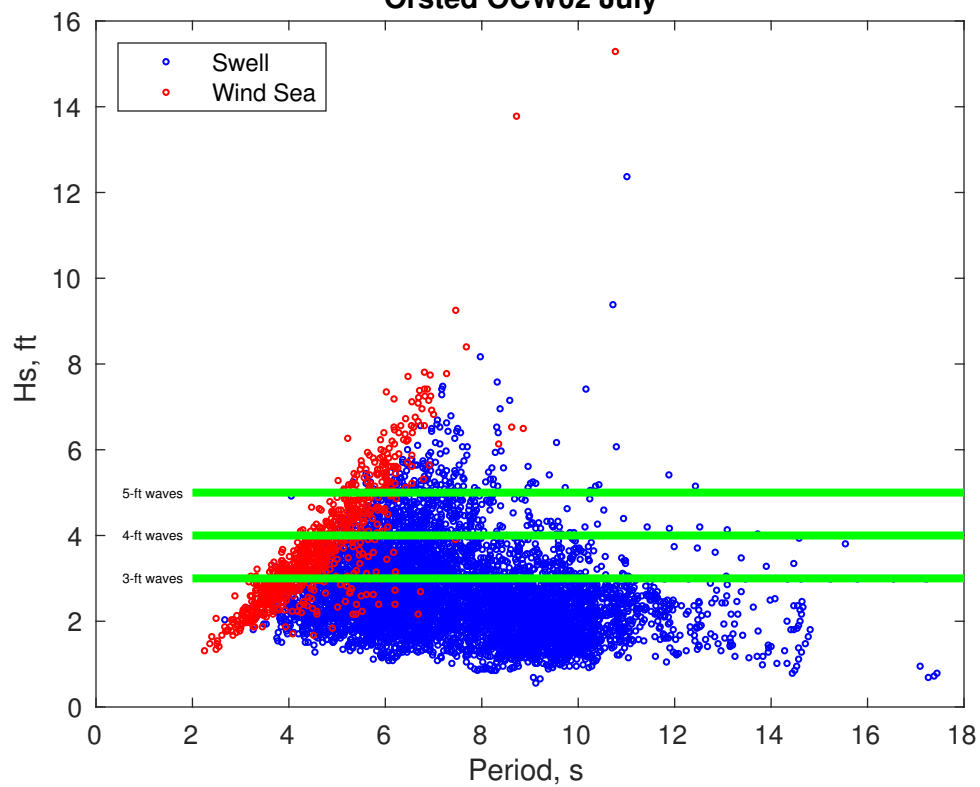
Current Speed > 1.5 knots Mean: 0.0 days Range: 0.0 - 0.0 days p10:1 days p50:0 days p80:1 days

Current Speed > 2.0 knots Mean: 0.0 days Range: 0.0 - 0.0 days p10:1 days p50:0 days p80:1 days

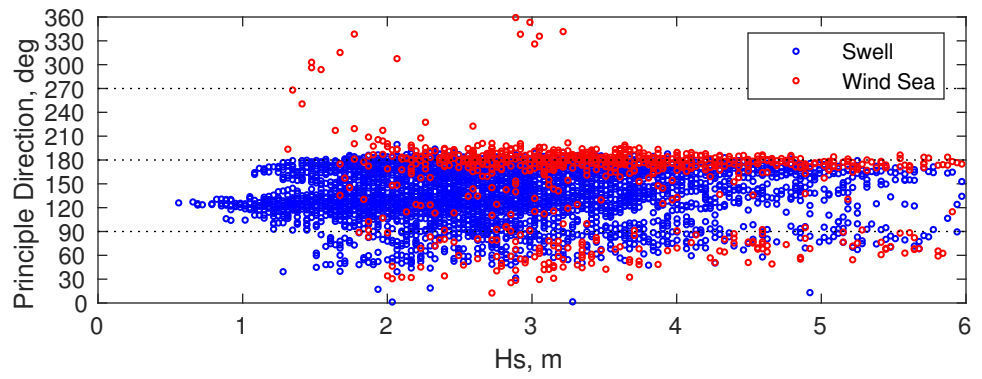
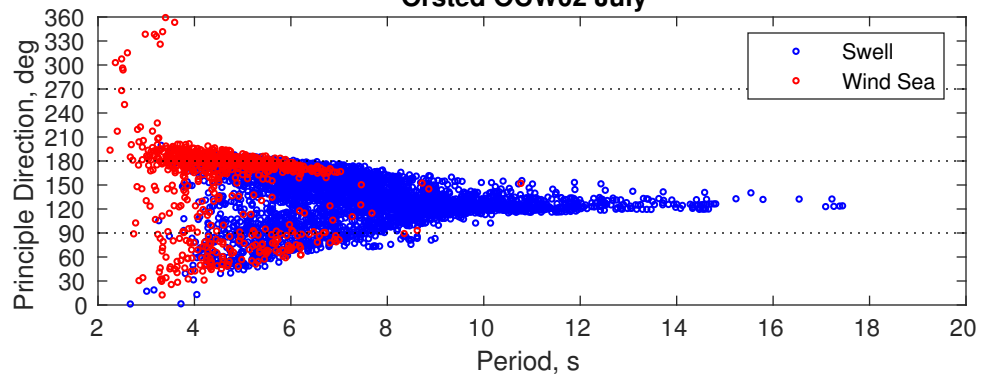
Severe Storms

Severe storms with gale force winds and extreme waves are not expected during this month.

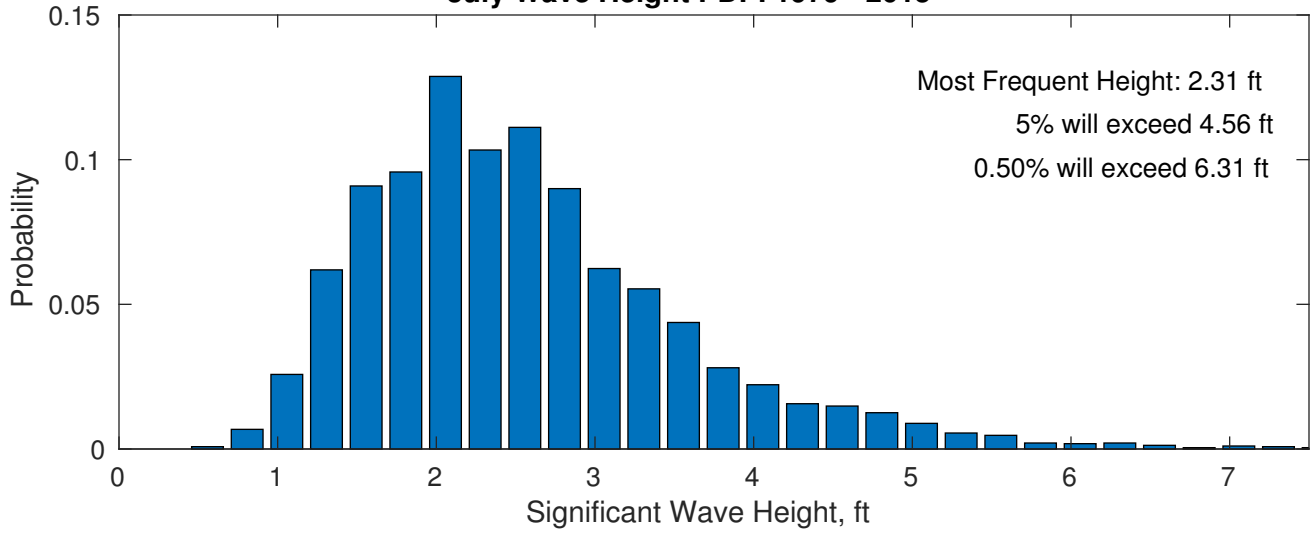
Orsted OCW02 July



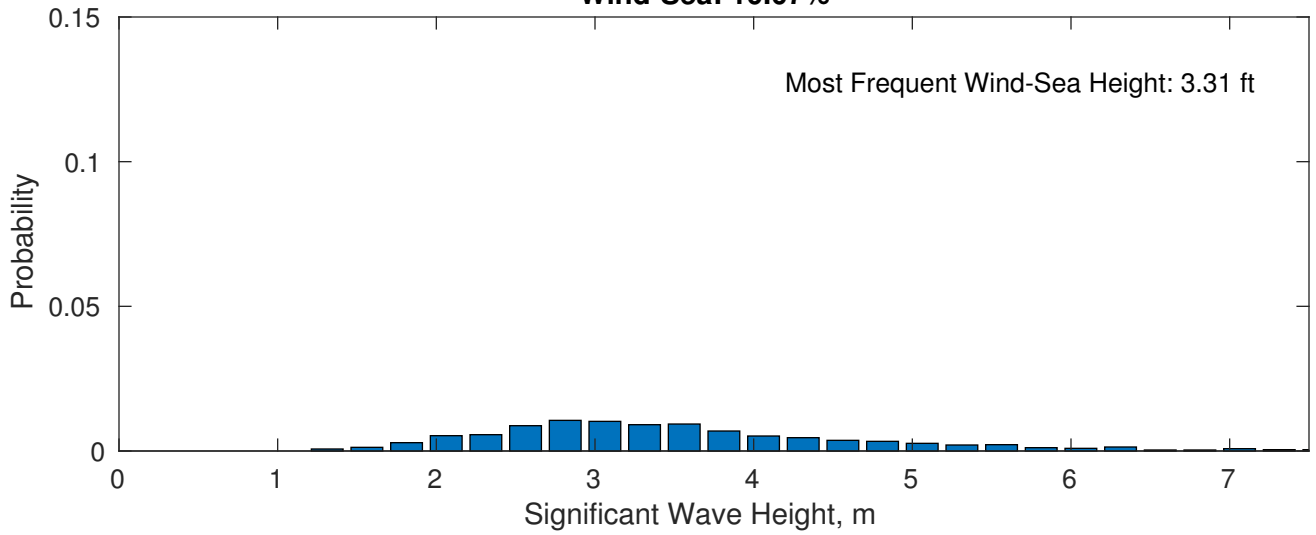
Orsted OCW02 July



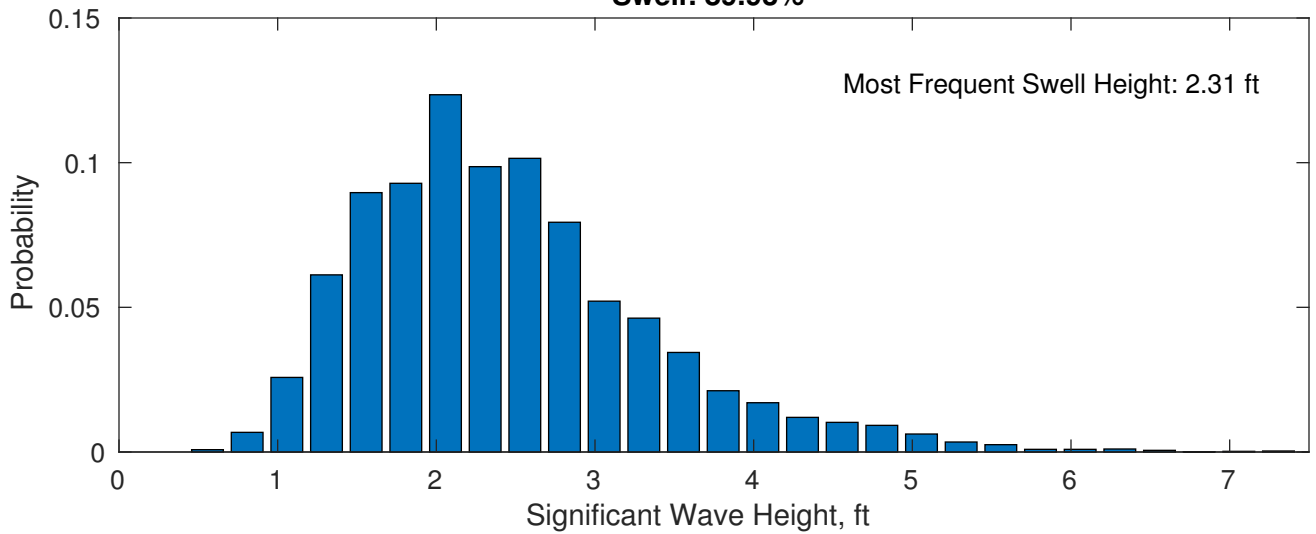
July Wave Height PDF: 1979 - 2015



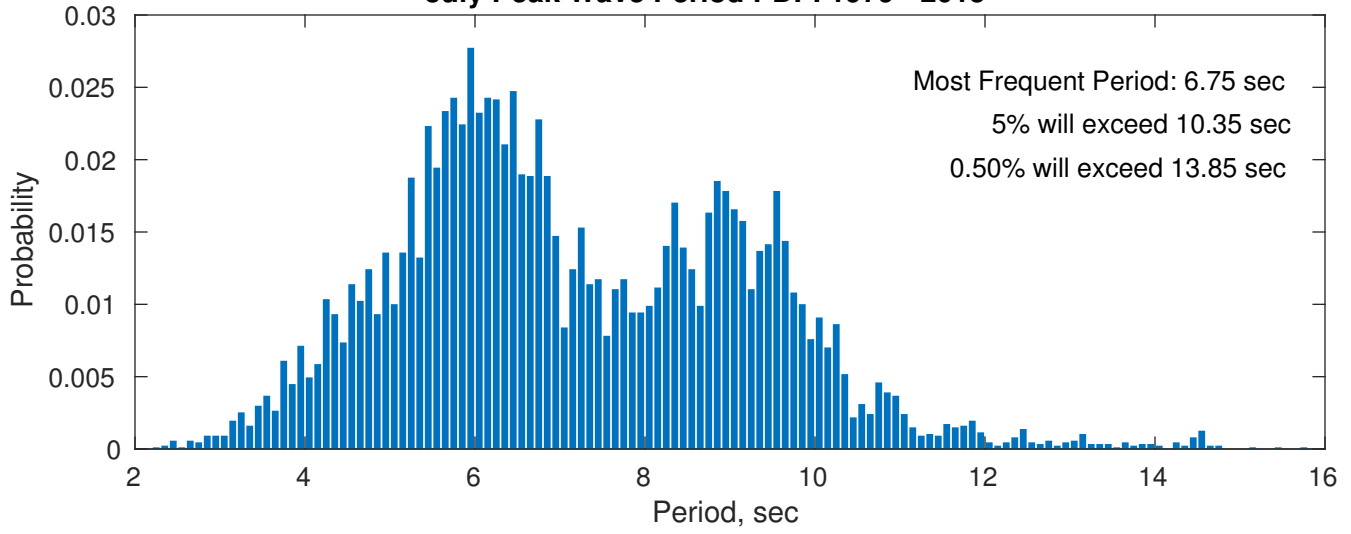
Wind-Sea: 10.07%



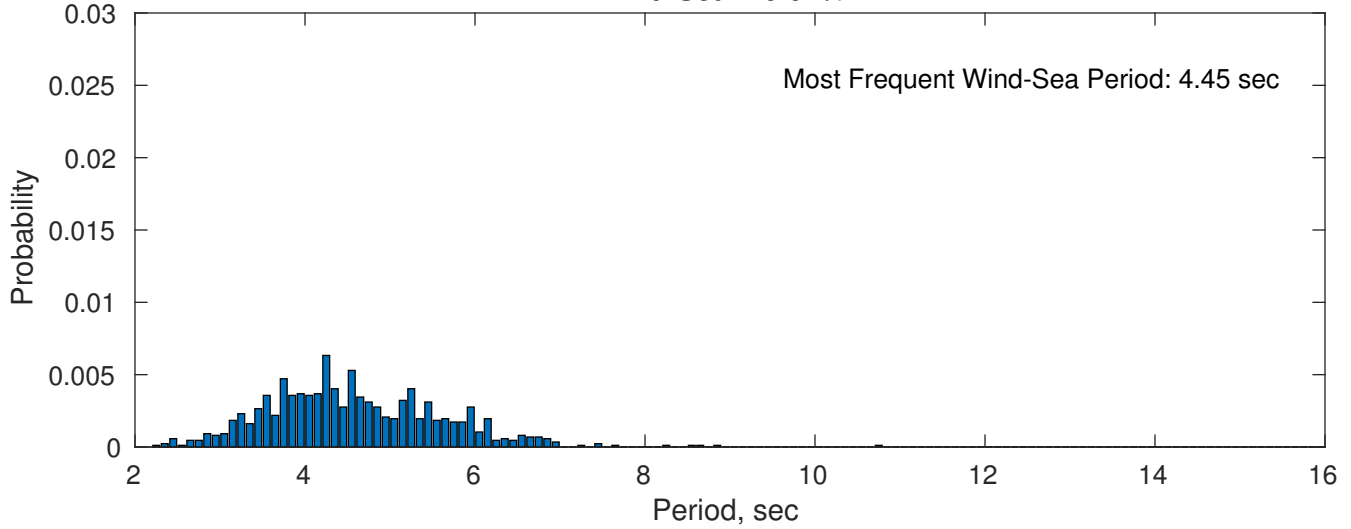
Swell: 89.93%



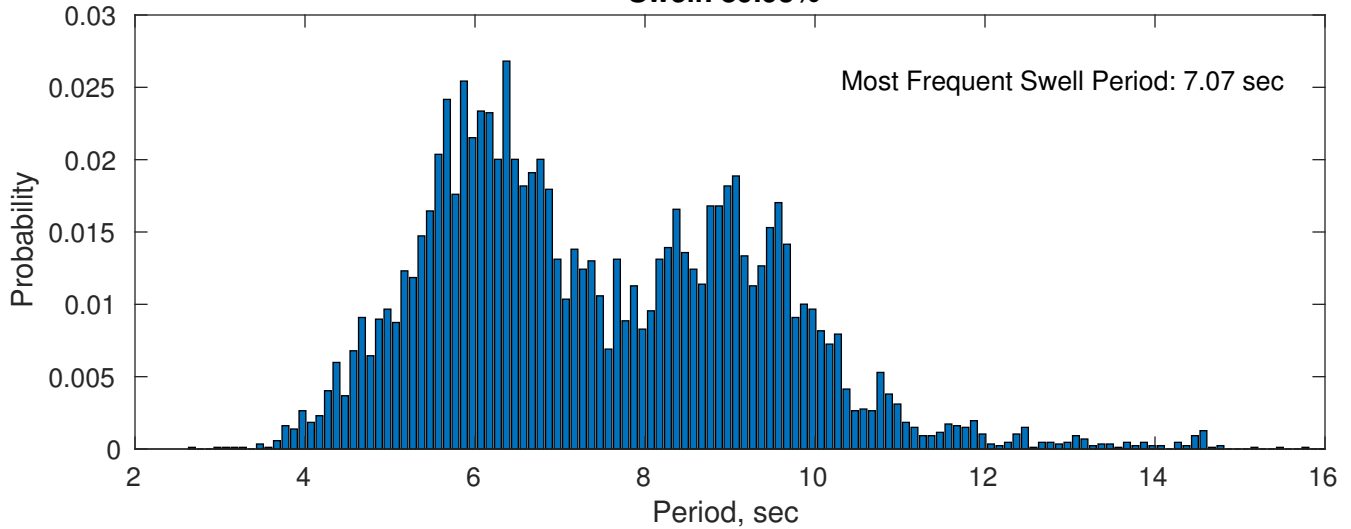
July Peak Wave Period PDF: 1979 - 2015



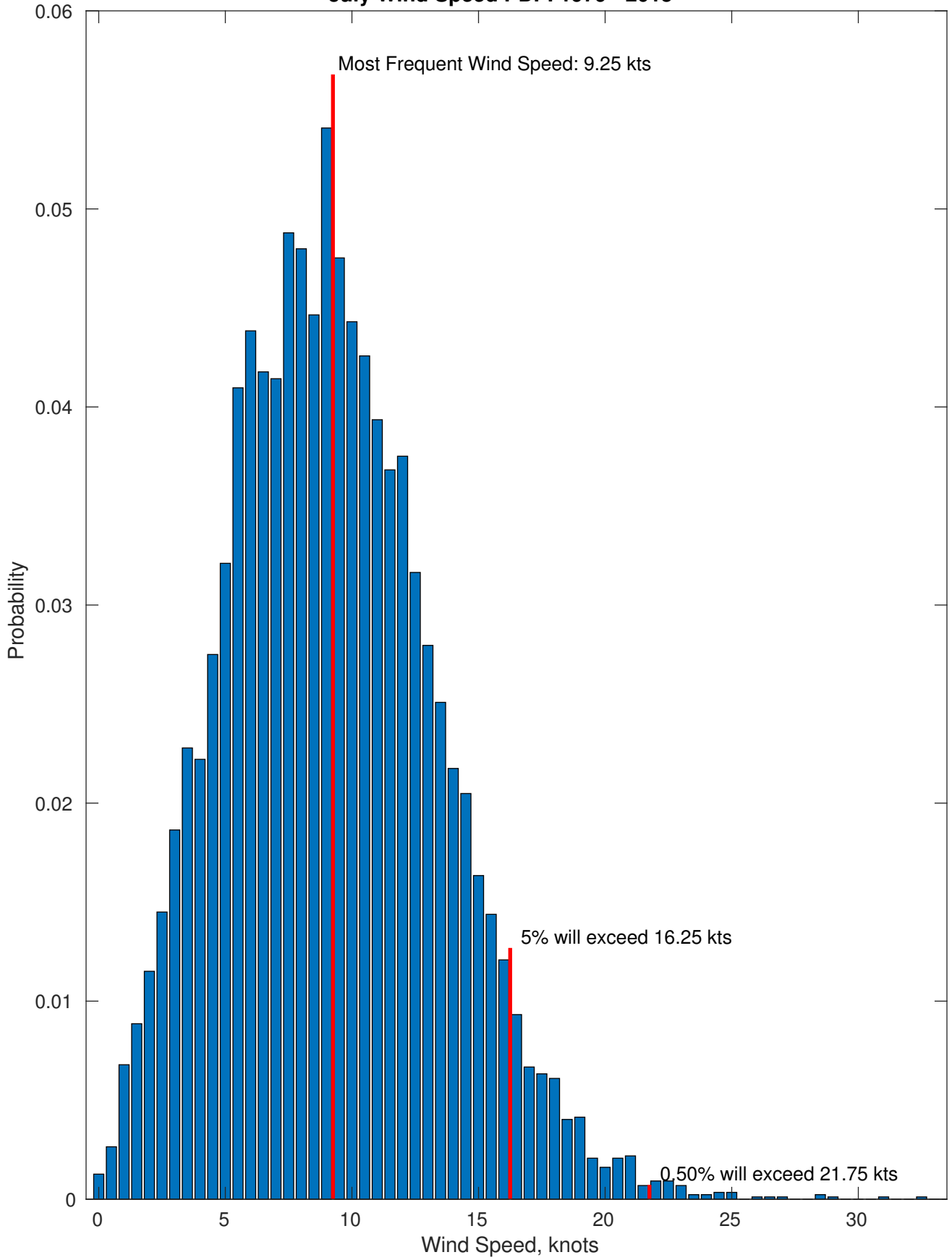
Wind-Sea: 10.07%



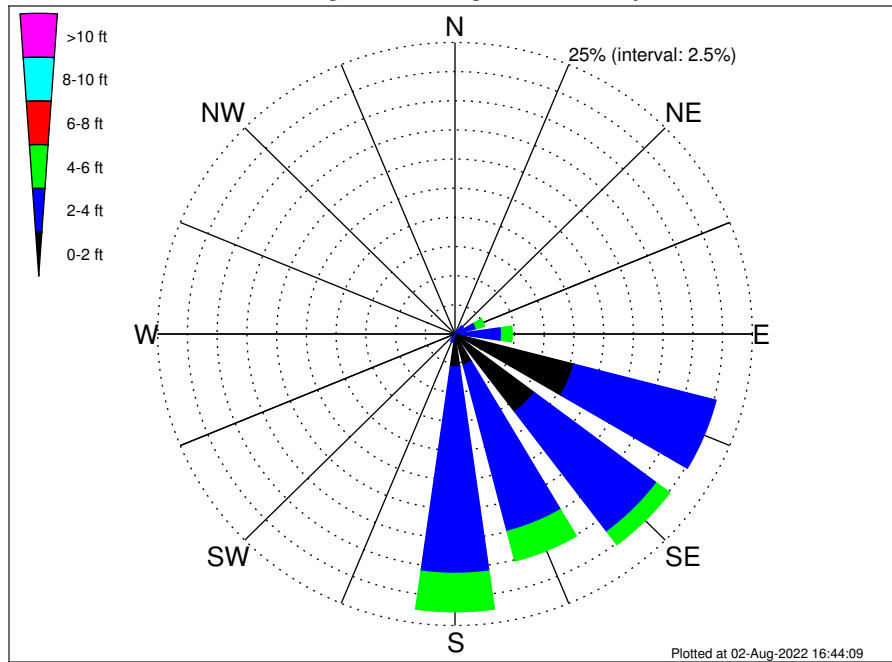
Swell: 89.93%



July Wind Speed PDF: 1979 - 2015



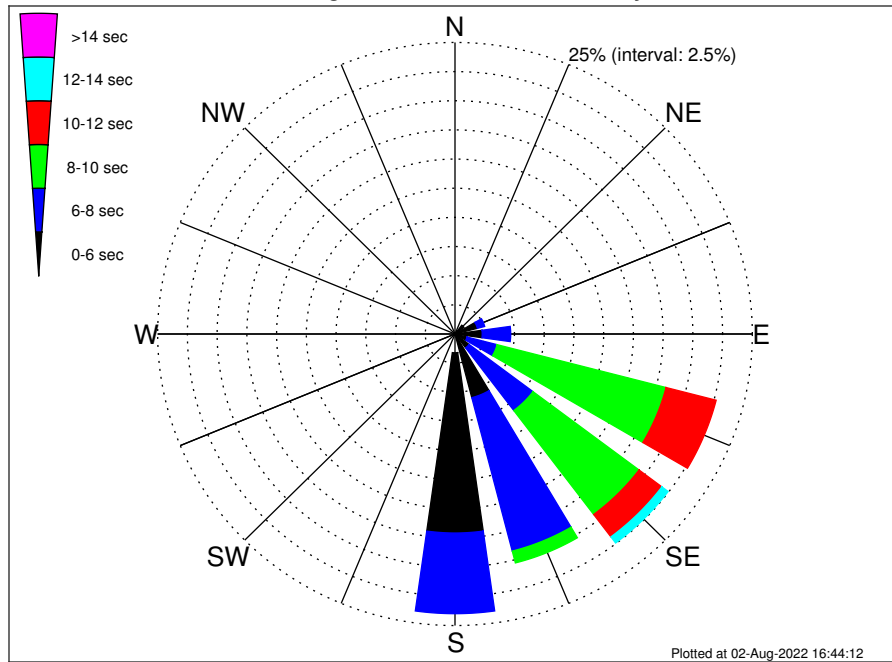
Orsted OCW02 Climatological WaveHeight Rose for July: 1979 - 2015



Joint Frequency Distribution Table

	N	NNE	NE	ENE	E	ESE	SE	SSE	S	SSW	SW	WSW	W	WNW	NW	NNW	Total
calm	•	•	•	•	•	0.26	0.25	•	•	•	•	•	•	•	•	•	0.52
1 - 2 ft	•	0.01	0.16	0.20	0.51	10.07	8.10	2.72	2.82	0.07	0.03	0.01	0.01	0.03	0.01	0.01	24.76
2 - 4 ft	0.05	0.13	0.71	1.66	3.42	12.34	12.88	14.76	17.71	0.64	0.02	•	•	•	0.02	0.03	64.37
4 - 6 ft	•	0.01	0.07	0.71	0.89	0.45	1.38	2.62	3.29	•	•	•	•	•	•	•	9.42
6 - 8 ft	•	•	•	0.03	0.26	0.08	0.07	0.23	0.16	•	•	•	•	•	•	•	0.84
8 - 10 ft	•	•	•	•	•	0.02	•	0.02	•	•	•	•	•	•	•	•	0.05
10 - 12 ft	•	•	•	•	•	•	•	•	•	•	•	•	•	•	•	•	•
12 - 14 ft	•	•	•	•	•	•	•	0.02	•	•	•	•	•	•	•	•	0.02
14 - 16 ft	•	•	•	•	•	•	•	0.01	•	•	•	•	•	•	•	•	0.01
16 - 18 ft	•	•	•	•	•	•	•	•	•	•	•	•	•	•	•	•	•
> 18 ft	•	•	•	•	•	•	•	•	•	•	•	•	•	•	•	•	•
Total	0.05	0.15	0.94	2.60	5.07	23.22	22.68	20.39	23.98	0.71	0.06	0.01	0.01	0.03	0.03	0.05	100.00

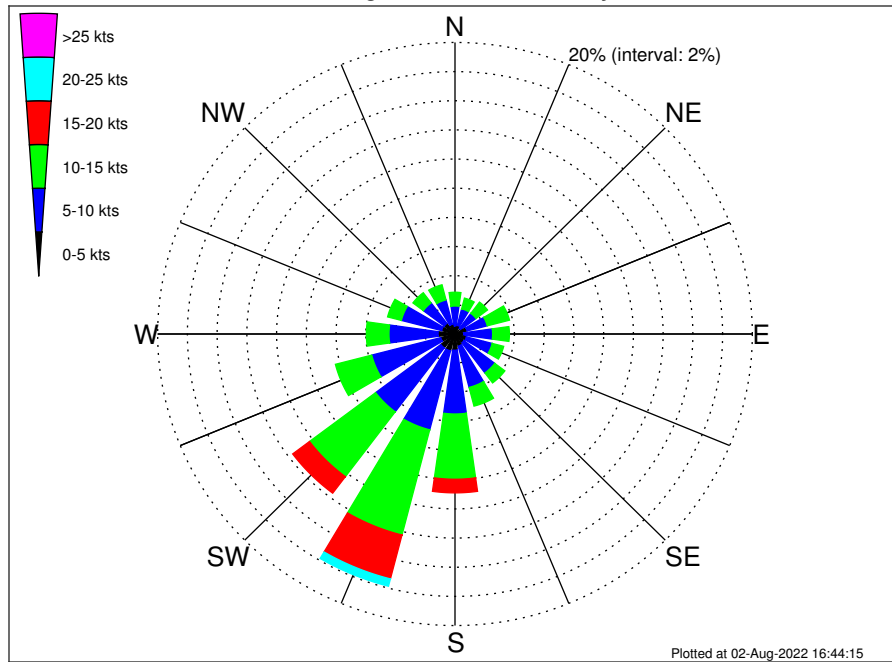
Orsted OCW02 Climatological WavePeriod Rose for July: 1979 - 2015



Joint Frequency Distribution Table

	N	NNE	NE	ENE	E	ESE	SE	SSE	S	SSW	SW	WSW	W	WNW	NW	NNW	Total
calm	•	•	•	•	•	•	•	•	•	•	•	•	•	•	•	•	•
1 - 2 sec	•	•	•	•	•	•	•	•	•	•	•	•	•	•	•	•	•
2 - 4 sec	0.05	0.13	0.18	0.12	0.18	0.09	0.13	0.26	1.61	0.52	0.06	0.01	0.01	0.03	0.03	0.05	3.46
4 - 6 sec	•	0.02	0.76	1.83	2.11	0.96	1.36	5.37	15.45	0.20	•	•	•	•	•	•	28.06
6 - 8 sec	•	•	•	0.63	2.39	2.61	6.73	13.59	6.92	•	•	•	•	•	•	•	32.88
8 - 10 sec	•	•	•	0.02	0.39	14.67	11.16	1.05	•	•	•	•	•	•	•	•	27.30
10 - 12 sec	•	•	•	•	•	4.35	2.41	0.10	•	•	•	•	•	•	•	•	6.86
12 - 14 sec	•	•	•	•	•	0.33	0.66	0.01	•	•	•	•	•	•	•	•	1.00
14 - 16 sec	•	•	•	•	•	0.17	0.21	•	•	•	•	•	•	•	•	•	0.38
18 - 20 sec	•	•	•	•	•	0.03	0.03	•	•	•	•	•	•	•	•	•	0.07
22 - 24 sec	•	•	•	•	•	•	•	•	•	•	•	•	•	•	•	•	•
Total	0.05	0.15	0.94	2.60	5.07	23.22	22.68	20.39	23.98	0.71	0.06	0.01	0.01	0.03	0.03	0.05	100.00

Orsted OCW02 Climatological Wind Rose for July: 1979 - 2015



Joint Frequency Distribution Table

	N	NNE	NE	ENE	E	ESE	SE	SSE	S	SSW	SW	WSW	W	WNW	NW	NNW	Total
calm	0.02	0.03	0.02	0.03	•	0.02	0.03	0.02	0.01	0.05	0.06	•	•	0.03	0.02	0.02	0.39
0 - 5 kts	0.53	0.58	0.47	0.81	0.59	0.77	0.72	0.84	1.10	1.15	1.14	0.99	1.14	0.90	0.89	0.67	13.28
5 - 10 kts	1.37	1.17	1.28	1.40	1.94	1.80	2.59	2.92	4.37	5.59	5.49	4.80	3.30	2.80	1.76	1.73	44.32
10 - 15 kts	0.94	0.76	0.97	1.54	1.13	0.79	0.85	1.32	4.48	7.46	5.57	2.52	1.52	0.96	0.87	1.07	32.75
15 - 20 kts	0.29	0.29	0.41	0.36	0.07	0.08	0.07	0.09	0.93	3.11	1.42	0.39	0.14	0.18	0.13	0.20	8.15
20 - 25 kts	0.01	0.02	0.08	0.02	0.03	0.03	0.01	•	0.12	0.52	0.06	0.01	•	•	0.02	0.05	0.99
25 - 30 kts	•	0.01	•	0.02	•	0.01	0.02	•	•	0.01	0.01	•	•	•	•	0.01	0.10
30 - 35 kts	•	•	•	•	•	•	•	0.01	0.01	•	•	•	•	•	•	•	0.02
35 - 40 kts	•	•	•	•	•	•	•	•	•	•	•	•	•	•	•	•	•
40 - 45 kts	•	•	•	•	•	•	•	•	•	•	•	•	•	•	•	•	•
45 - 50 kts	•	•	•	•	•	•	•	•	•	•	•	•	•	•	•	•	•
Total	3.16	2.87	3.23	4.19	3.76	3.51	4.30	5.21	11.02	17.88	13.74	8.71	6.10	4.87	3.69	3.74	100.00