

Orsted SJW02 - April

Latitude: 38.61 N Longitude: 74.67 W

Weather Days

Wave Height > 3.0 ft Mean: 17.2 days Range: 13.4 - 21.1 days p10:23 days p50:17.5 days p90:13 days

Wave Height > 4.0 ft Mean: 11.3 days Range: 7.1 - 15.4 days p10:18.5 days p50:11 days p90:8 days

Wave Height > 5.0 ft Mean: 7.0 days Range: 3.4 - 10.5 days p10:13.5 days p50:7 days p90:3 days

Wind Speed > 20.0 knots Mean: 3.6 days Range: 1.7 - 5.6 days p10:7 days p50:3 days p90:1.5 days

Wind Speed > 25.0 knots Mean: 1.0 days Range: 0.1 - 1.9 days p10:2.5 days p50:1 days p90:0.5 days

Wind Speed > 30.0 knots Mean: 0.2 days Range: 0.0 - 0.5 days p10:1 days p50:0.5 days p90:0.5 days

Working Window Probability

Wave Height < 3.0 ft 3 days or longer: 27%
 5 days or longer: 4%
 7 days or longer: 1%

Wave Height < 4.0 ft 3 days or longer: 50%
 5 days or longer: 12%
 7 days or longer: 6%

Wave Height < 5.0 ft 3 days or longer: 64%
 5 days or longer: 21%
 7 days or longer: 12%

Waves

Mean Height: 2 - 4 ft

The wave heights will occasionally reach 10 - 12 ft, but rarely higher.

Mean Period: 6 - 8 sec

The wave periods will occasionally reach 12 - 14 sec, but rarely longer.

Principle Direction, from: E

WindSea/Swell: 26% / 74%

Winds

Mean Speed: 10 - 15 kts

The winds will occasionally reach 30 - 35 kts, but rarely greater.

Principle Direction, from: SSW

Currents

Mean Speed: 0.25-0.50 kts

The currents will occasionally reach 1.25-1.50 kts, but rarely greater.

Principle Direction, to: NE

Current Speed > 1.0 knots Mean: 1.6 days Range: 0.1 - 3.2 days p10:6 days p50:1.625 days p80:2 days

Current Speed > 1.5 knots Mean: 0.2 days Range: 0.0 - 0.6 days p10:2 days p50:0.1875 days p80:1 days

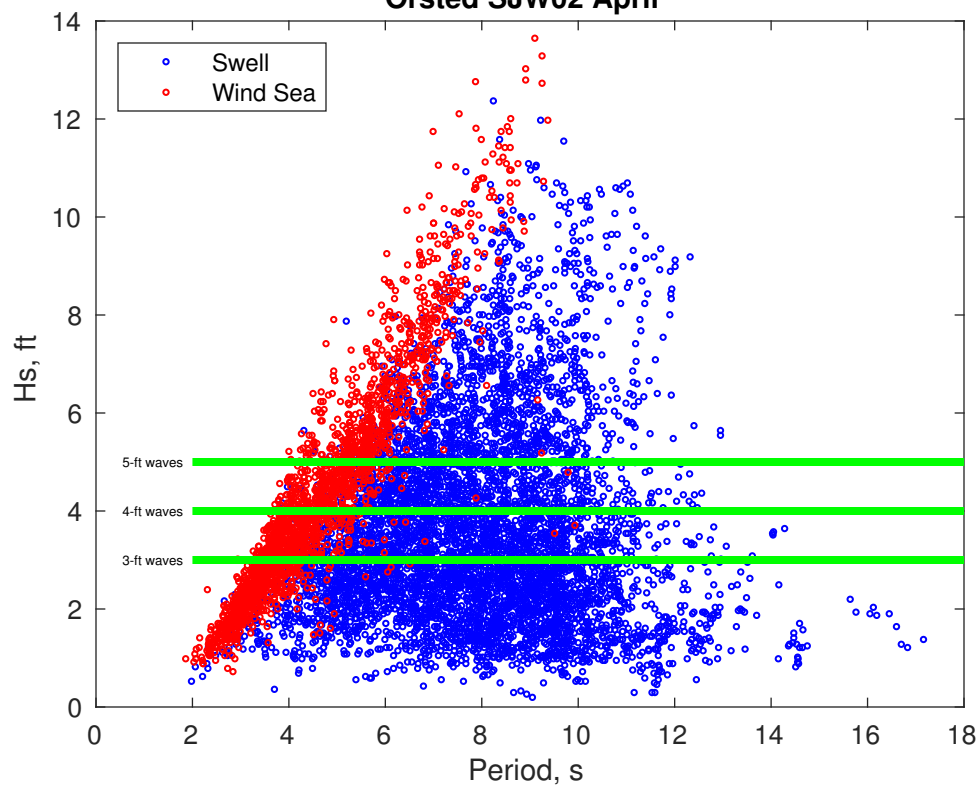
Current Speed > 2.0 knots Mean: 0.1 days Range: 0.0 - 0.3 days p10:1 days p50:0.0625 days p80:1 days

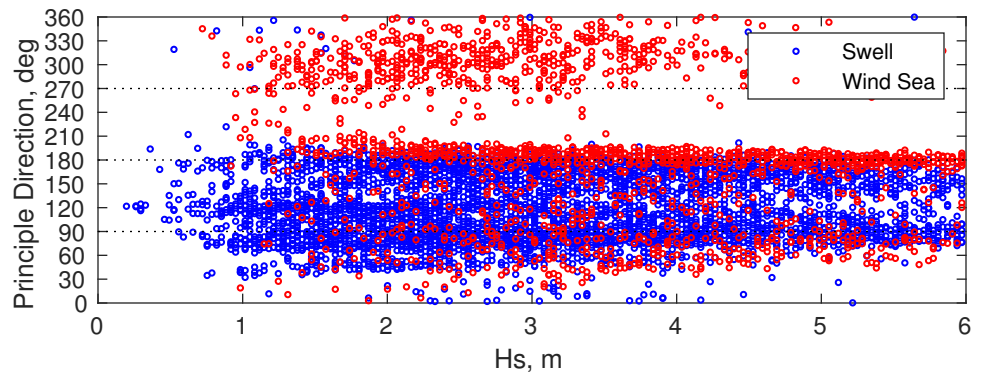
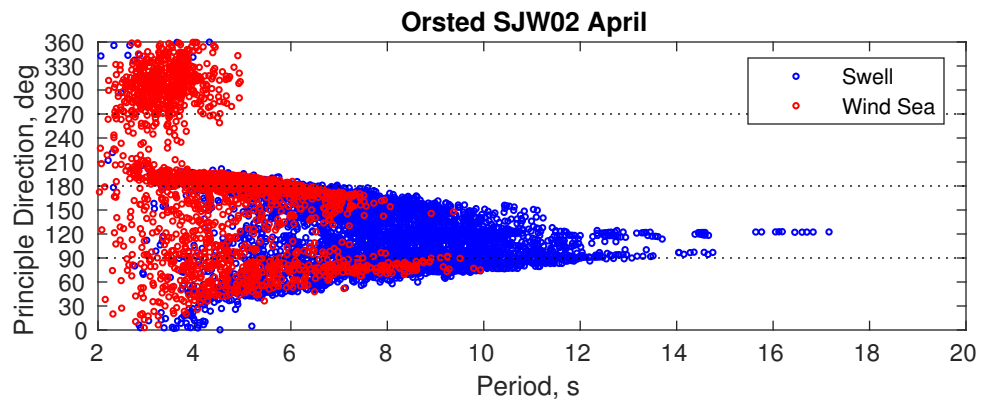
Severe Storms

There is a 9 % chance of a storm occurring in the month with winds peaking above 34 kts.

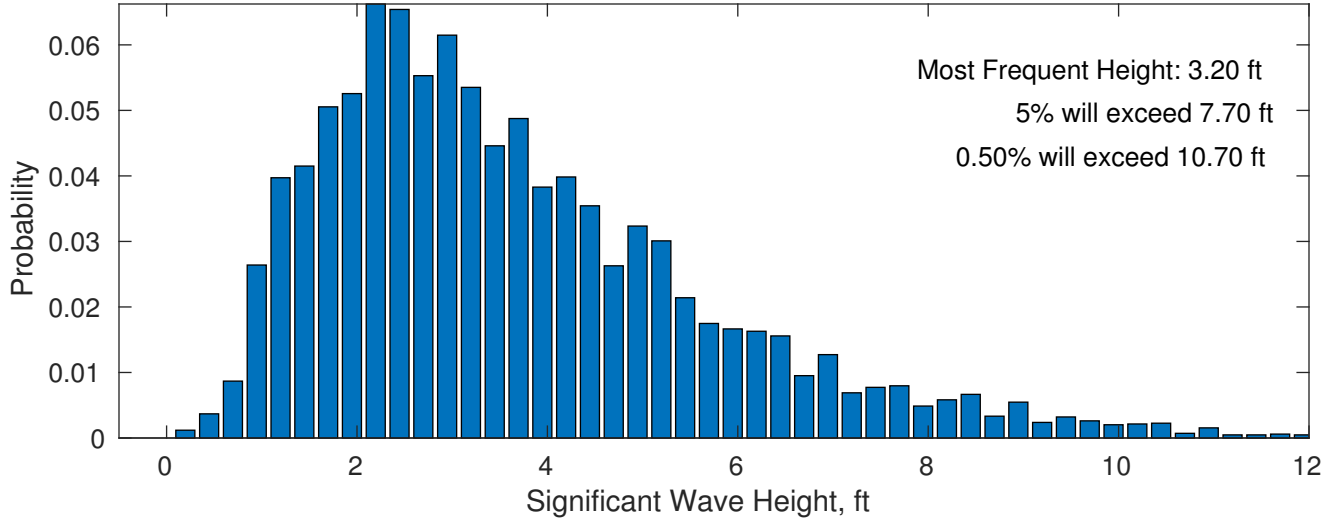
There is little chance of a storm occurring in the month with waves peaking at 4m (13 ft) or greater.

Orsted SJW02 April

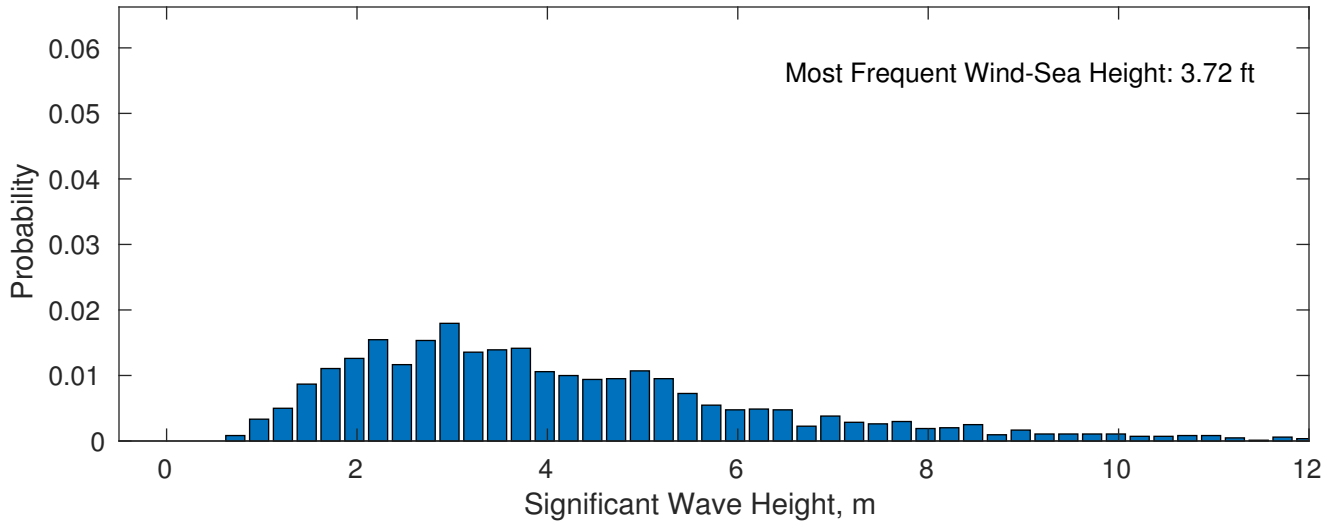




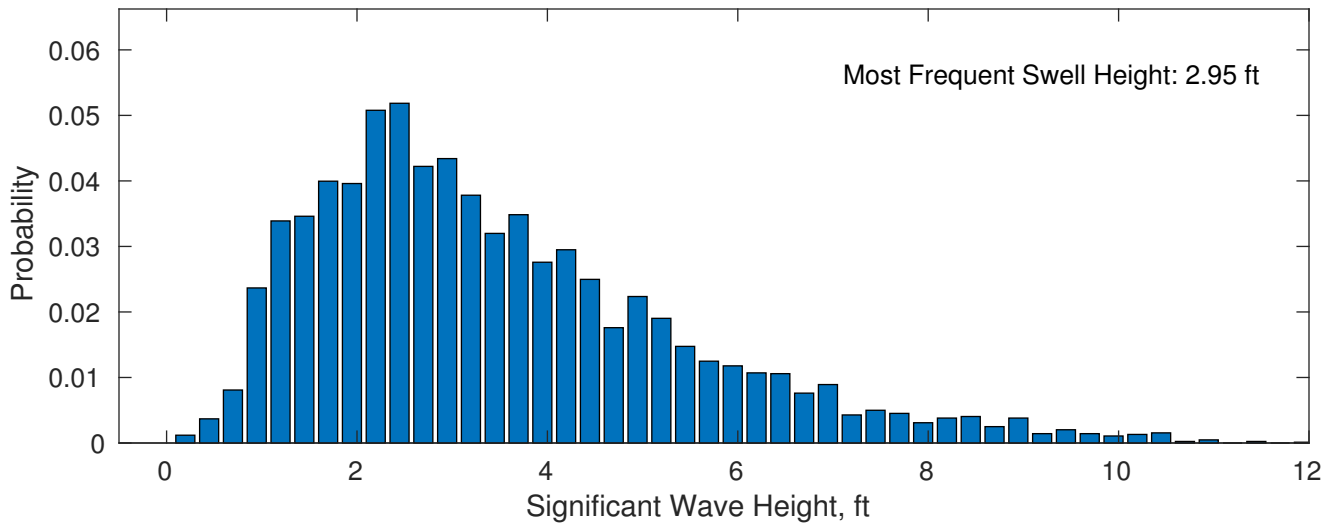
April Wave Height PDF: 1979 - 2015



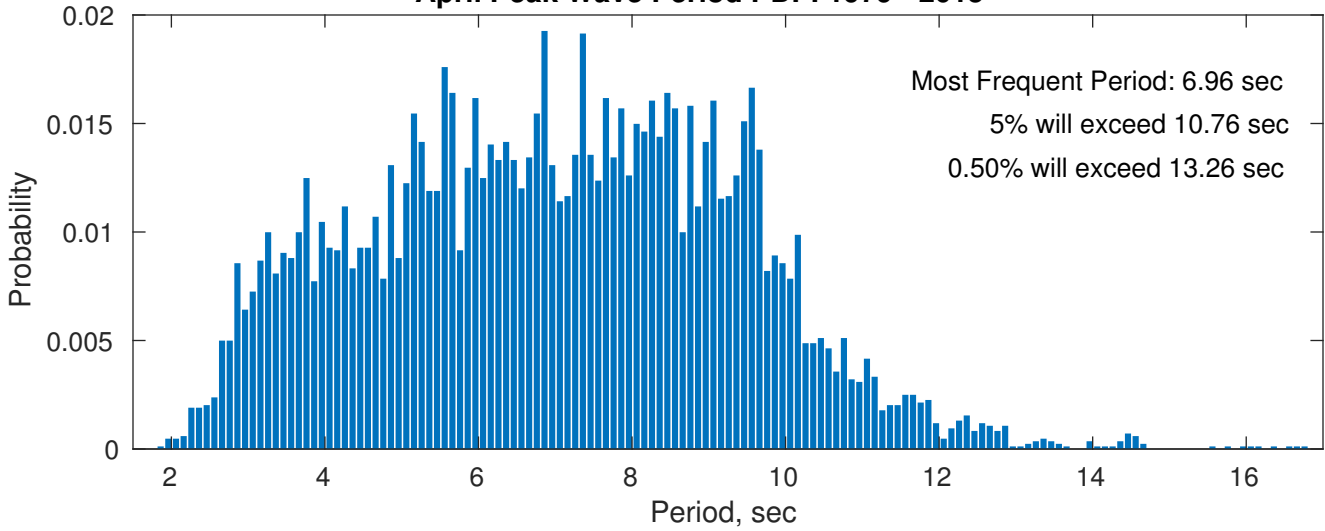
Wind-Sea: 26.35%



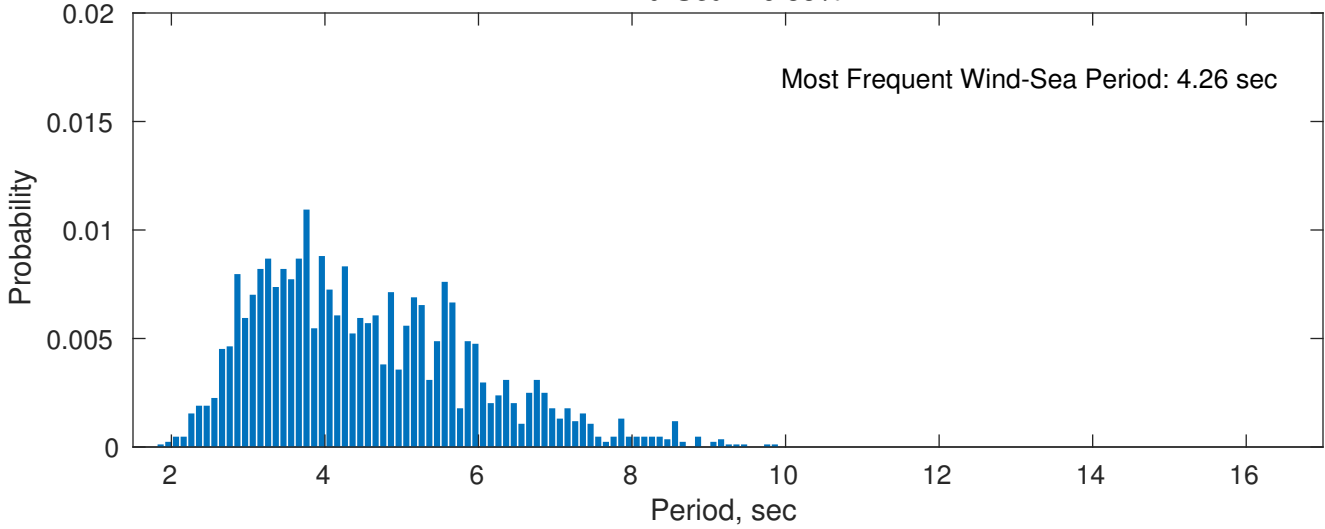
Swell: 73.65%



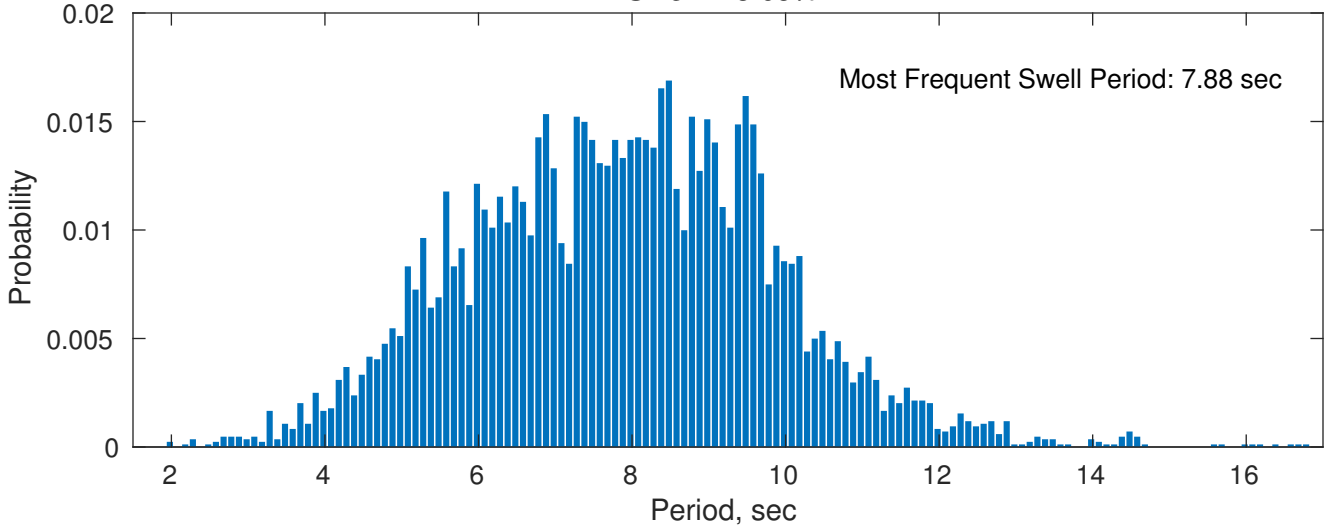
April Peak Wave Period PDF: 1979 - 2015



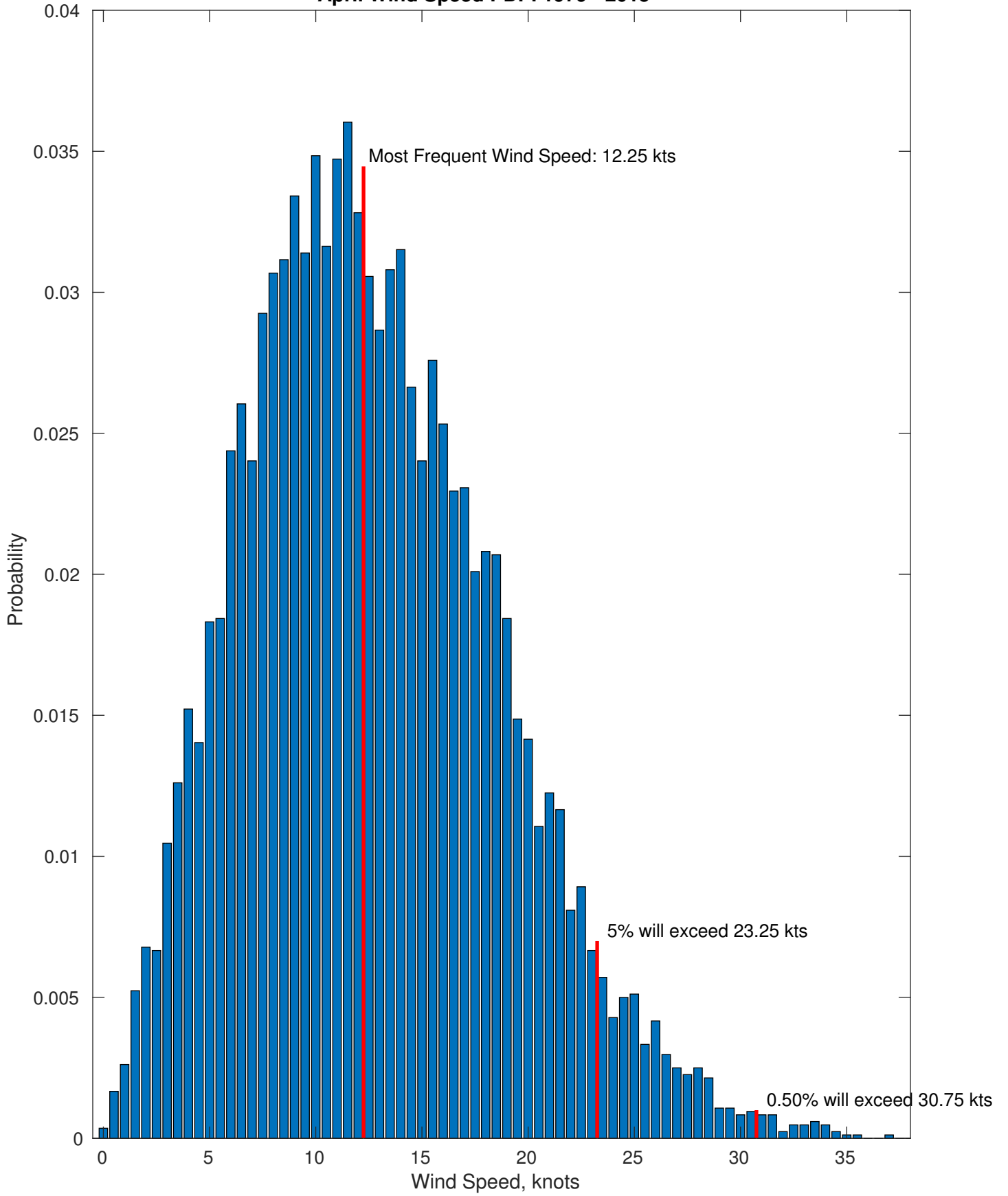
Wind-Sea: 26.35%



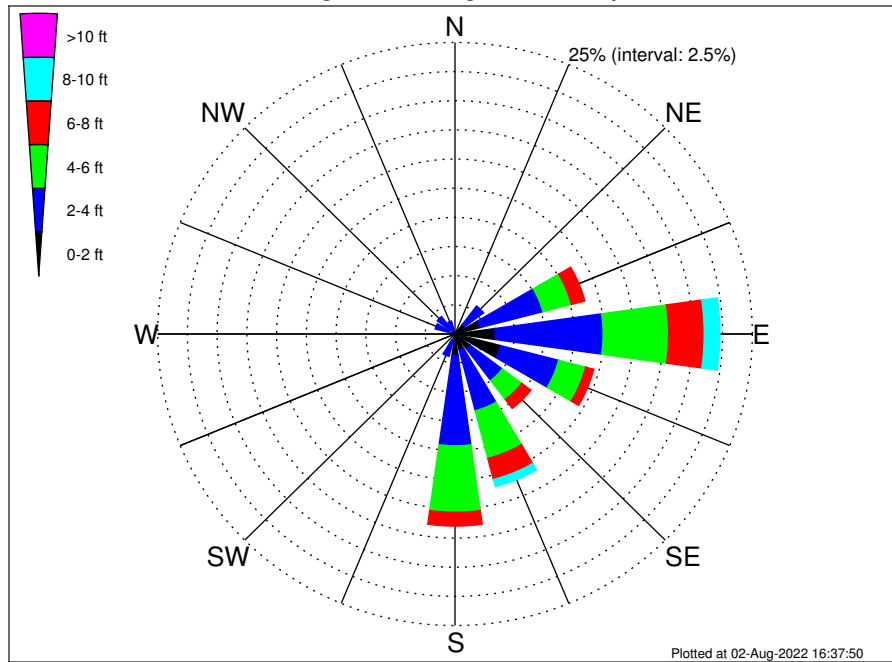
Swell: 73.65%



April Wind Speed PDF: 1979 - 2015



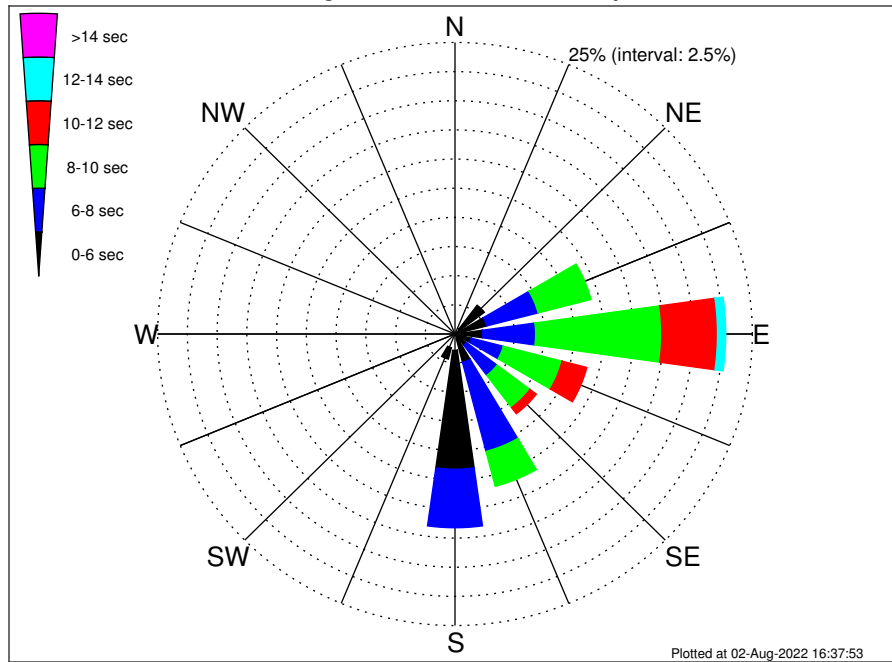
Orsted SJW02 Climatological WaveHeight Rose for April: 1979 - 2015



Joint Frequency Distribution Table

	N	NNE	NE	ENE	E	ESE	SE	SSE	S	SSW	SW	WSW	W	WNW	NW	NNW	Total
calm	•	0.01	0.06	0.21	0.21	0.52	0.29	0.14	0.18	0.05	0.02	•	0.01	0.02	0.02	0.04	1.80
1 - 2 ft	0.06	0.05	0.98	1.97	3.18	3.45	1.32	1.27	1.64	0.54	0.11	0.12	0.31	0.52	0.48	0.19	16.17
2 - 4 ft	0.44	0.38	1.97	5.45	9.06	5.03	3.38	5.38	7.77	1.40	0.06	0.13	0.51	1.18	1.38	0.93	44.44
4 - 6 ft	0.12	0.04	0.46	2.47	5.51	2.34	2.05	4.22	5.70	0.24	•	0.02	0.10	0.23	0.34	0.08	23.91
6 - 8 ft	0.01	•	0.07	1.18	3.00	0.71	0.96	1.87	1.19	•	•	•	0.02	0.06	0.08	0.02	9.18
8 - 10 ft	•	•	•	0.62	1.32	0.13	0.48	0.64	0.17	•	•	•	•	•	•	•	3.35
10 - 12 ft	•	•	•	0.27	0.52	•	0.11	0.12	0.01	•	•	•	•	•	•	•	1.03
12 - 14 ft	•	•	•	0.01	0.08	•	0.01	•	•	•	•	•	•	•	•	•	0.11
14 - 16 ft	•	•	•	•	•	•	•	•	•	•	•	•	•	•	•	•	•
16 - 18 ft	•	•	•	•	•	•	•	•	•	•	•	•	•	•	•	•	•
> 18 ft	•	•	•	•	•	•	•	•	•	•	•	•	•	•	•	•	•
Total	0.63	0.48	3.54	12.19	22.88	12.19	8.59	13.64	16.65	2.22	0.19	0.27	0.95	2.01	2.31	1.26	100.00

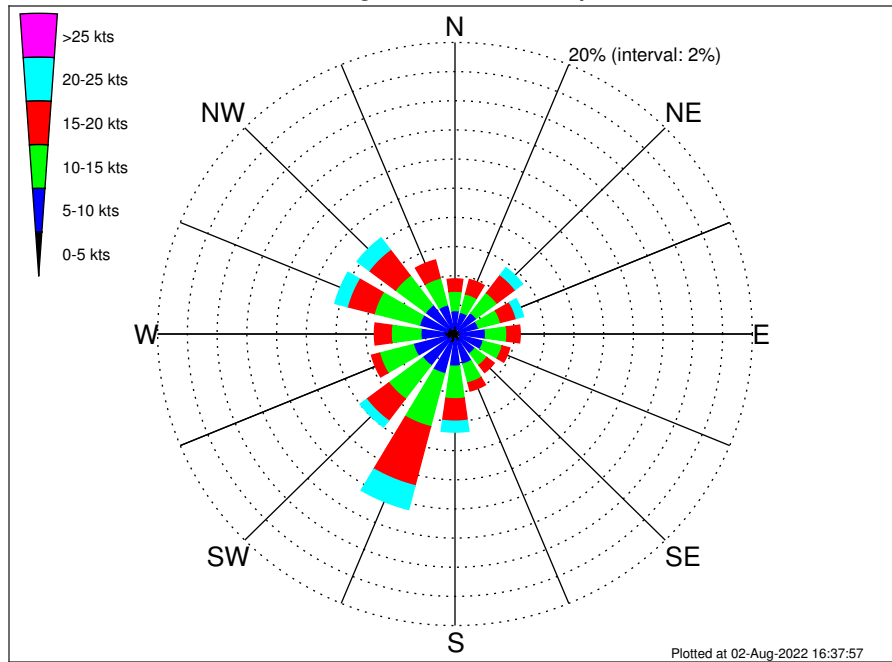
Orsted SJW02 Climatological WavePeriod Rose for April: 1979 - 2015



Joint Frequency Distribution Table

	N	NNE	NE	ENE	E	ESE	SE	SSE	S	SSW	SW	WSW	W	WNW	NW	NNW	Total
calm	•	•	•	•	•	•	•	•	•	•	•	•	•	•	•	•	•
1 - 2 sec	•	•	•	•	•	•	•	•	•	•	•	•	•	0.01	0.01	•	0.02
2 - 4 sec	0.43	0.37	0.50	0.40	0.55	0.44	0.25	0.42	1.40	1.21	0.19	0.27	0.83	1.76	1.93	1.19	12.14
4 - 6 sec	0.20	0.11	2.59	2.34	1.78	0.99	0.96	2.09	10.19	1.01	•	•	0.12	0.24	0.37	0.07	23.07
6 - 8 sec	•	•	0.45	4.47	4.45	2.77	3.22	7.88	5.02	•	•	•	•	•	•	•	28.27
8 - 10 sec	•	•	•	4.59	10.61	5.10	3.46	3.09	0.04	•	•	•	•	•	•	•	26.89
10 - 12 sec	•	•	•	0.38	4.69	2.15	0.67	0.15	•	•	•	•	•	•	•	•	8.04
12 - 14 sec	•	•	•	•	0.69	0.48	0.02	•	•	•	•	•	•	•	•	•	1.19
14 - 16 sec	•	•	•	•	0.12	0.17	•	•	•	•	•	•	•	•	•	•	0.29
18 - 20 sec	•	•	•	•	•	0.10	•	•	•	•	•	•	•	•	•	•	0.10
22 - 24 sec	•	•	•	•	•	•	•	•	•	•	•	•	•	•	•	•	•
Total	0.63	0.48	3.54	12.19	22.88	12.19	8.59	13.64	16.65	2.22	0.19	0.27	0.95	2.01	2.31	1.26	100.00

Orsted SJW02 Climatological Wind Rose for April: 1979 - 2015



Joint Frequency Distribution Table

	N	NNE	NE	ENE	E	ESE	SE	SSE	S	SSW	SW	WSW	W	WNW	NW	NNW	Total
calm	0.04	0.02	0.04	0.02	0.02	•	•	•	•	0.01	•	0.01	0.01	0.01	•	0.01	0.20
0 - 5 kts	0.51	0.32	0.38	0.29	0.44	0.37	0.38	0.52	0.34	0.64	0.43	0.58	0.69	0.51	0.55	0.40	7.36
5 - 10 kts	1.06	1.19	1.38	1.32	1.59	1.59	1.28	1.61	1.87	2.15	2.27	2.30	1.59	1.94	1.93	1.64	26.71
10 - 15 kts	1.33	1.31	1.74	1.53	1.44	1.32	1.01	1.33	2.24	3.76	2.87	2.35	2.00	3.15	2.54	1.90	31.82
15 - 20 kts	0.84	1.02	1.53	1.09	0.89	0.52	0.63	0.58	1.53	4.19	1.88	0.56	1.13	1.87	2.22	1.28	21.79
20 - 25 kts	0.31	0.31	0.63	0.51	0.34	0.21	0.20	0.40	0.75	1.69	0.55	0.17	0.34	0.87	1.01	0.48	8.78
25 - 30 kts	0.06	0.14	0.44	0.24	0.06	0.04	0.06	0.10	0.15	0.43	0.07	0.02	0.11	0.29	0.30	0.21	2.71
30 - 35 kts	0.01	0.01	0.05	0.08	0.01	•	0.02	0.05	0.05	0.06	•	•	0.02	0.04	0.12	0.07	0.59
35 - 40 kts	•	•	•	•	•	•	•	•	•	•	•	•	0.01	0.02	•	•	0.04
40 - 45 kts	•	•	•	•	•	•	•	•	•	•	•	•	•	•	•	•	•
45 - 50 kts	•	•	•	•	•	•	•	•	•	•	•	•	•	•	•	•	•
Total	4.16	4.33	6.18	5.09	4.80	4.06	3.59	4.59	6.93	12.93	8.06	5.99	5.91	8.69	8.67	6.01	100.00