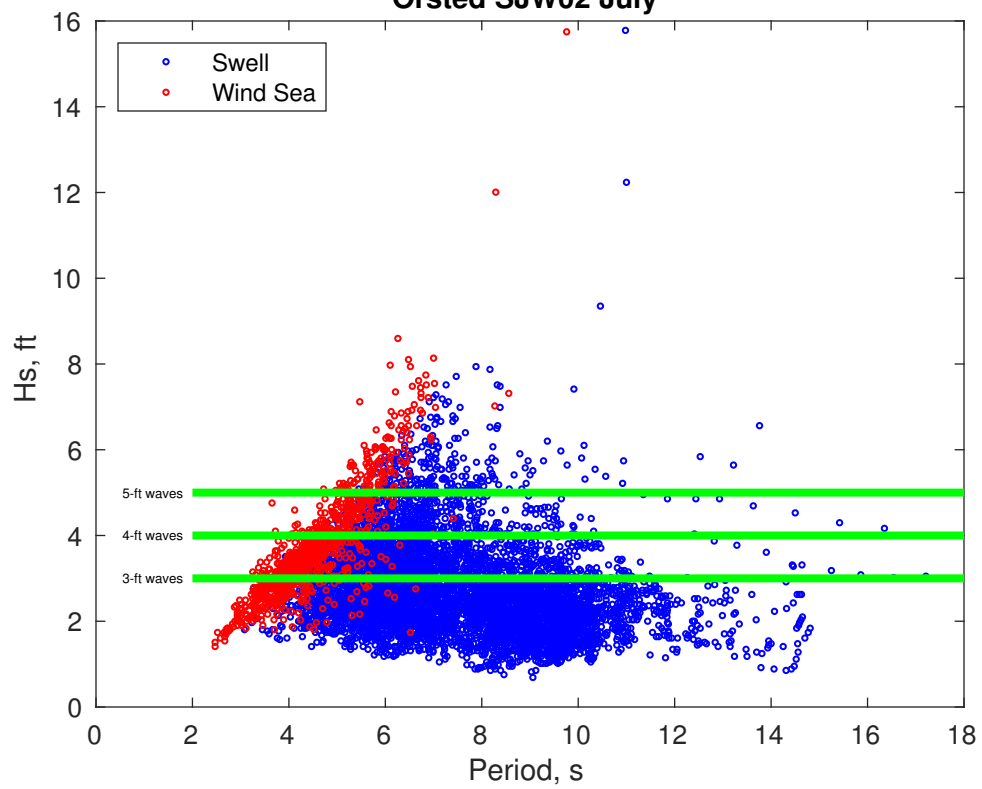
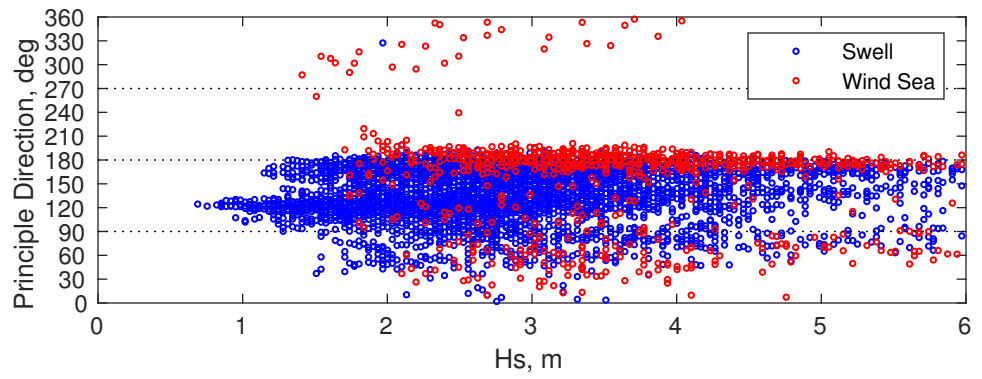
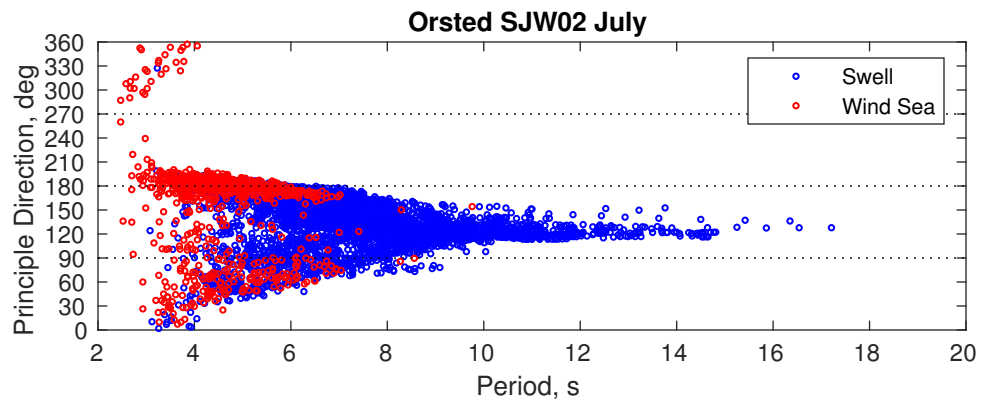


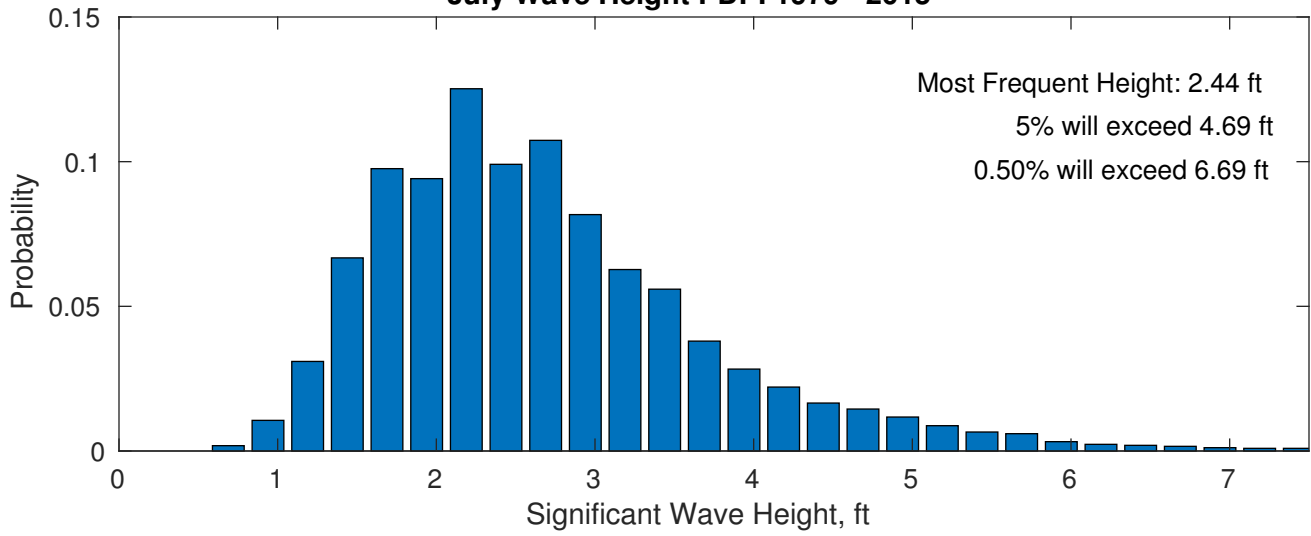


Orsted SJW02 July

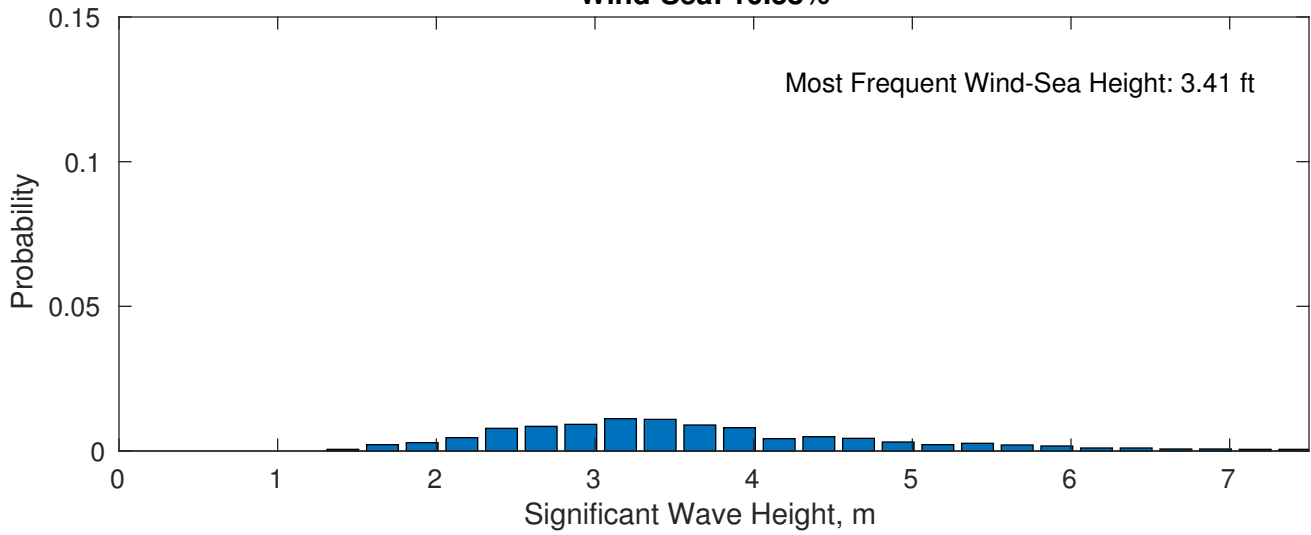




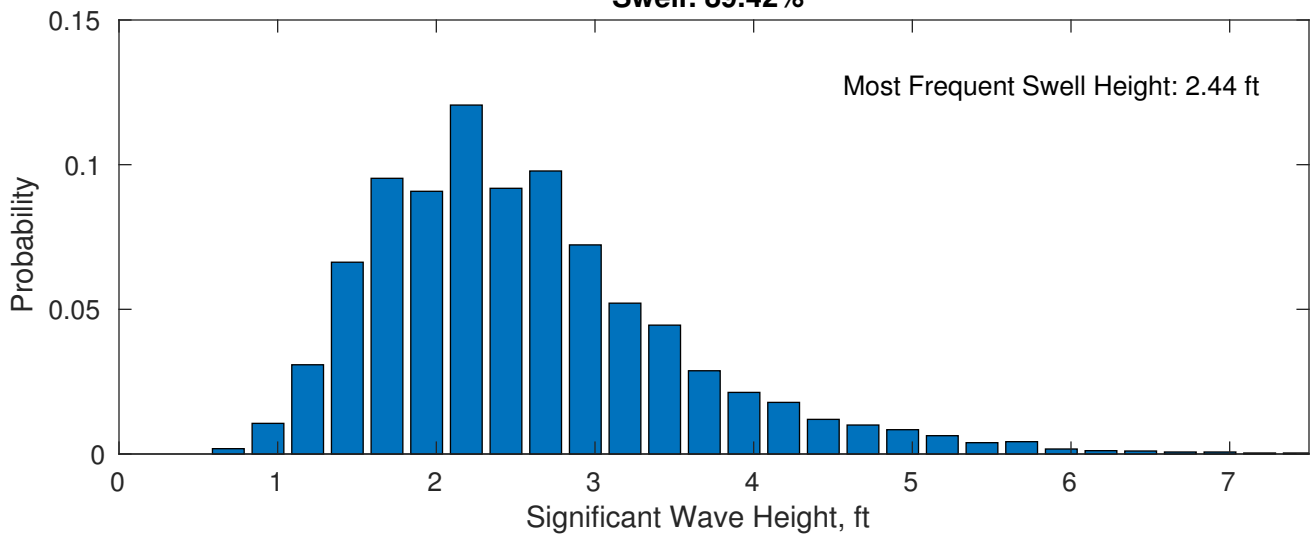
**July Wave Height PDF: 1979 - 2015**



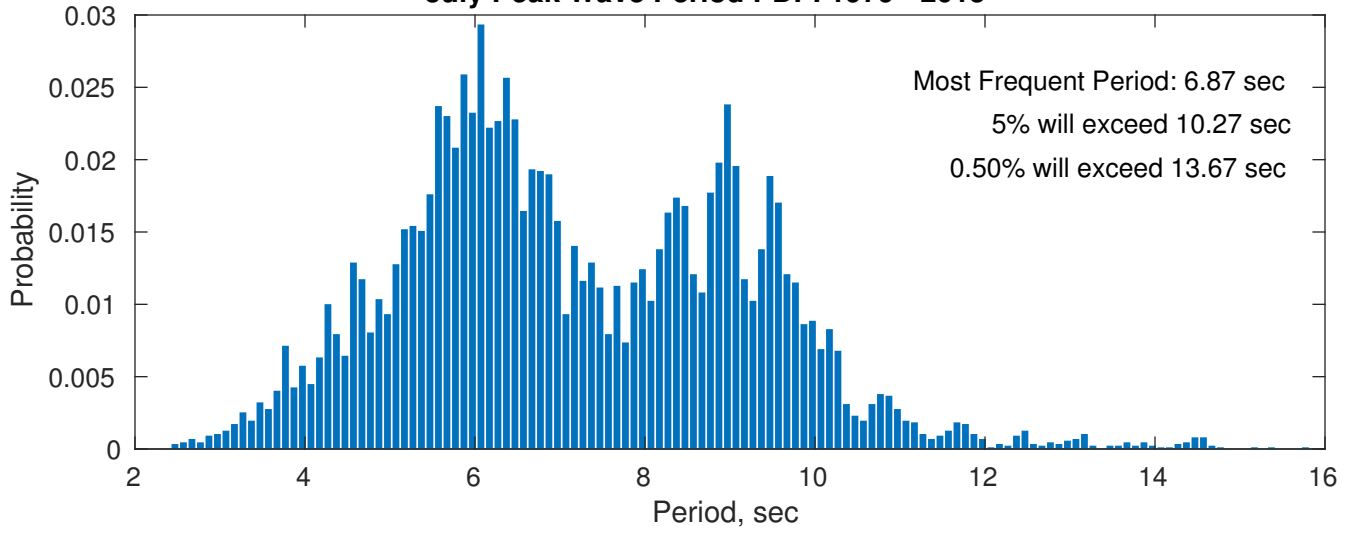
**Wind-Sea: 10.58%**



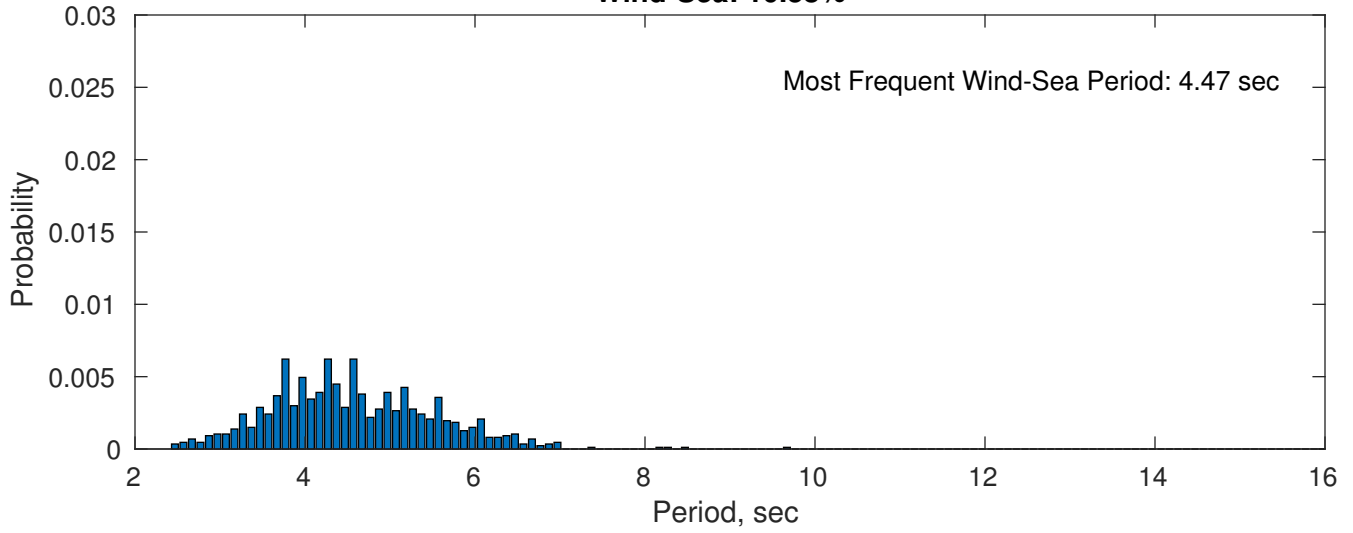
**Swell: 89.42%**



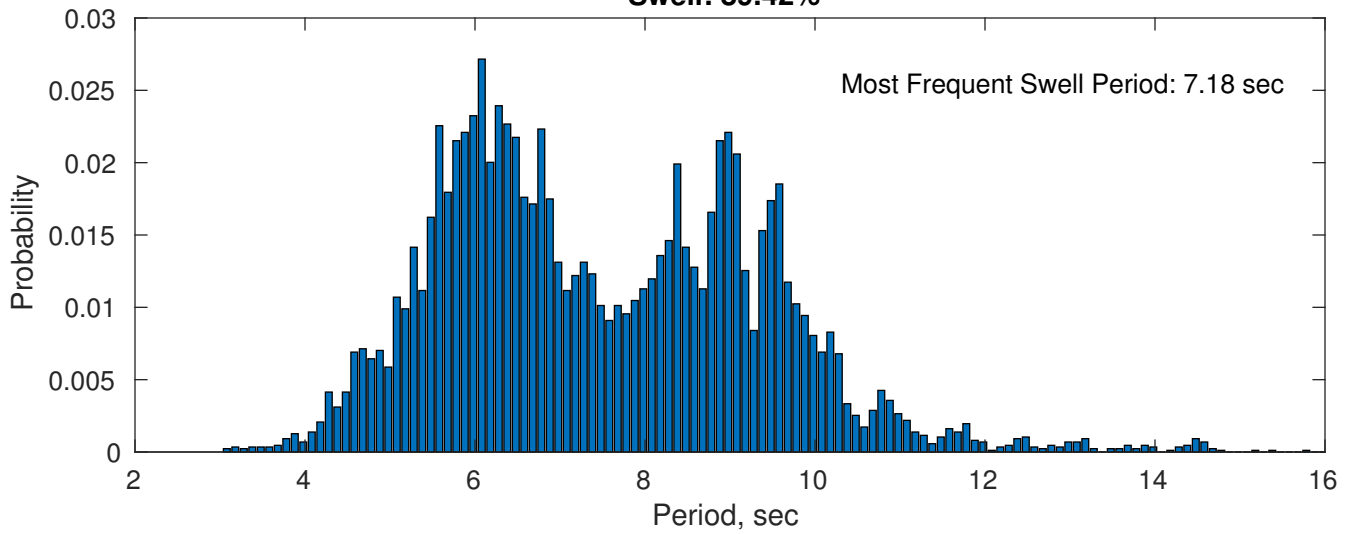
**July Peak Wave Period PDF: 1979 - 2015**



**Wind-Sea: 10.58%**

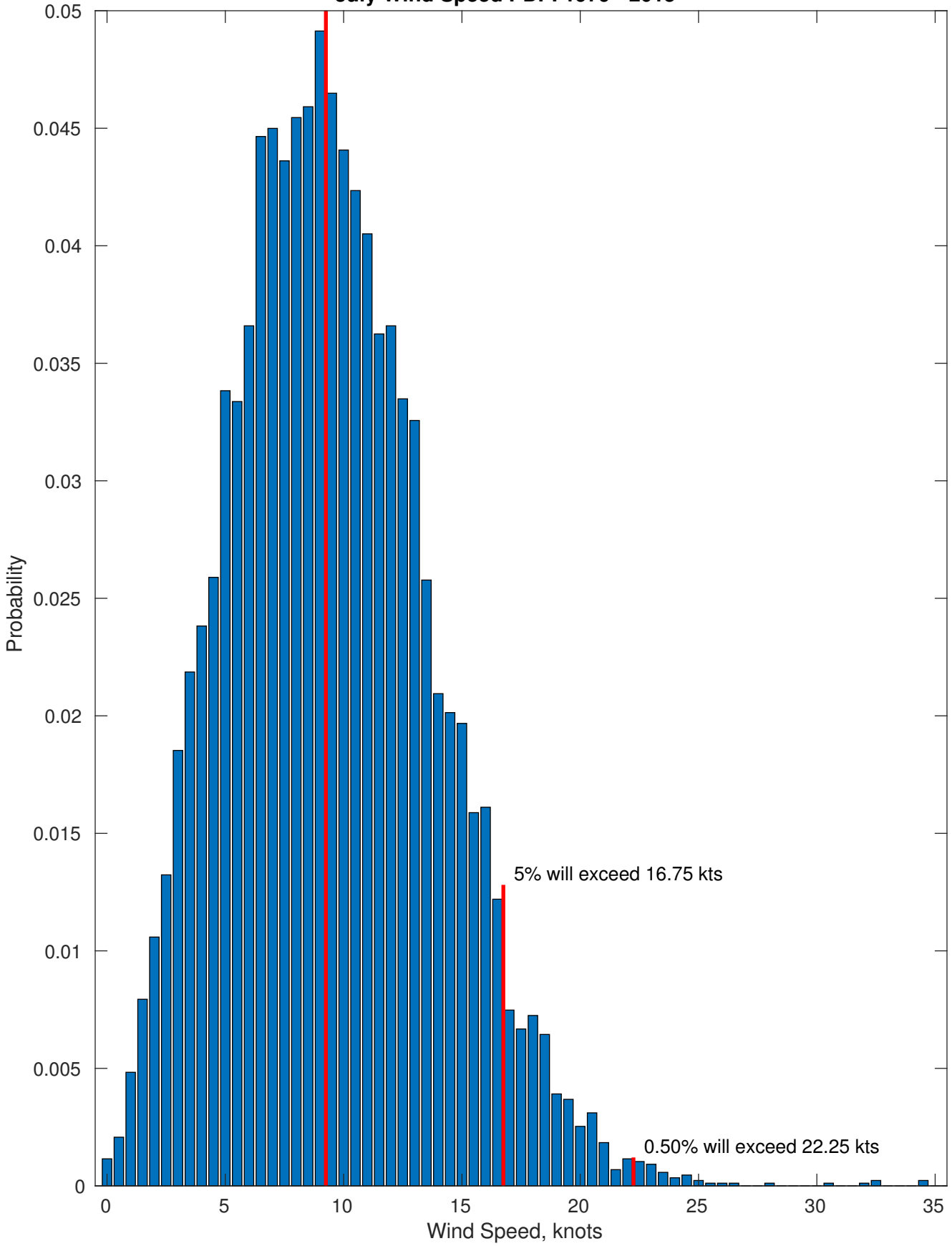


**Swell: 89.42%**

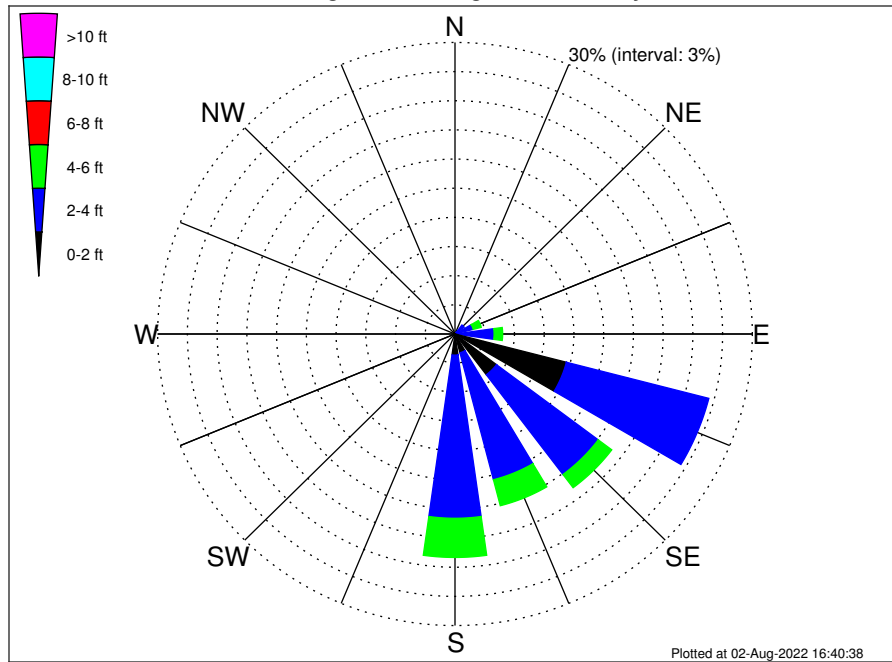


Most Frequent Wind Speed: 9.25 kts

**July Wind Speed PDF: 1979 - 2015**



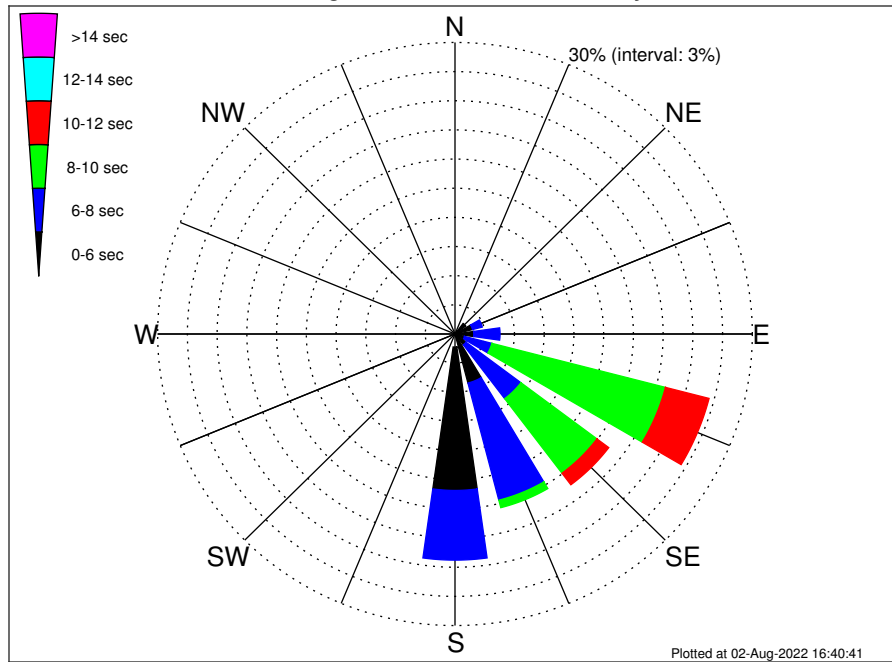
Orsted SJW02 Climatological WaveHeight Rose for July: 1979 - 2015



Joint Frequency Distribution Table

	N	NNE	NE	ENE	E	ESE	SE	SSE	S	SSW	SW	WSW	W	WNW	NW	NNW	Total
calm	•	•	•	•	•	0.18	0.14	•	•	•	•	•	•	•	•	•	0.32
1 - 2 ft	•	•	0.16	0.29	0.43	11.43	5.11	1.99	2.17	0.08	0.01	•	0.01	0.05	0.03	0.01	21.77
2 - 4 ft	0.15	0.26	1.00	1.61	3.52	14.84	12.85	13.50	16.79	0.74	•	0.01	•	0.03	0.06	0.07	65.44
4 - 6 ft	0.03	•	0.21	0.84	0.86	0.71	1.70	2.76	4.03	•	•	•	•	•	•	•	11.15
6 - 8 ft	•	•	0.01	0.24	0.25	0.14	0.03	0.26	0.28	•	•	•	•	•	•	•	1.22
8 - 10 ft	•	•	•	0.01	•	0.01	0.01	0.01	•	•	•	•	•	•	•	•	0.05
10 - 12 ft	•	•	•	•	•	•	•	•	•	•	•	•	•	•	•	•	•
12 - 14 ft	•	•	•	•	•	•	•	0.02	•	•	•	•	•	•	•	•	0.02
14 - 16 ft	•	•	•	•	•	•	•	0.02	•	•	•	•	•	•	•	•	0.02
16 - 18 ft	•	•	•	•	•	•	•	•	•	•	•	•	•	•	•	•	•
> 18 ft	•	•	•	•	•	•	•	•	•	•	•	•	•	•	•	•	•
Total	0.18	0.26	1.38	2.99	5.06	27.32	19.85	18.57	23.27	0.82	0.01	0.01	0.01	0.08	0.09	0.08	100.00

Orsted SJW02 Climatological WavePeriod Rose for July: 1979 - 2015

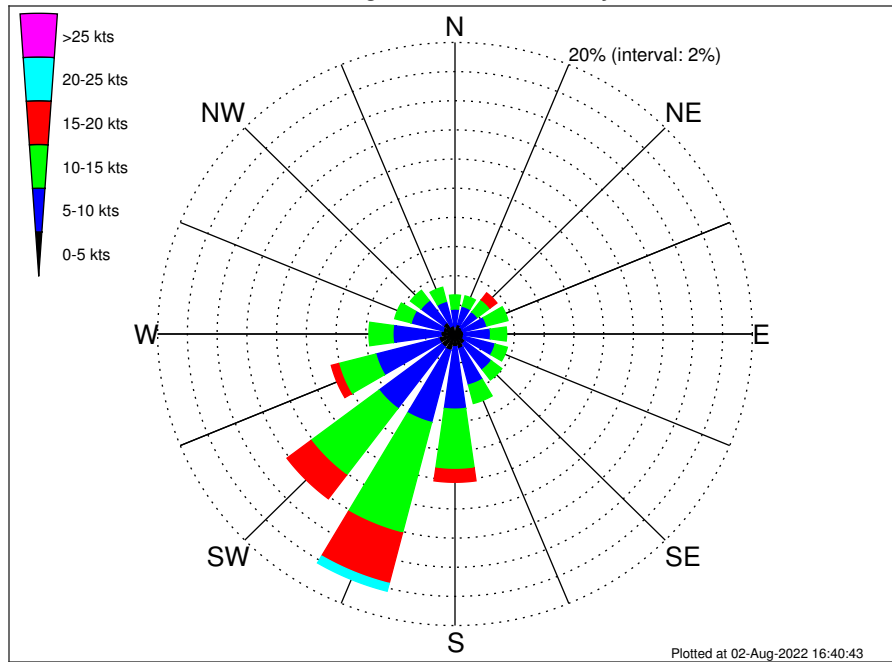


Joint Frequency Distribution Table

	N	NNE	NE	ENE	E	ESE	SE	SSE	S	SSW	SW	WSW	W	WNW	NW	NNW	Total
calm	•	•	•	•	•	•	•	•	•	•	•	•	•	•	•	•	•
1 - 2 sec	•	•	•	•	•	•	•	•	•	•	•	•	•	•	•	•	•
2 - 4 sec	0.17	0.23	0.21	0.15	0.14	0.14	0.09	0.24	1.35	0.51	0.01	0.01	0.01	0.08	0.09	0.08	3.51
4 - 6 sec	0.01	0.03	1.15	1.68	1.76	0.85	1.30	4.97	14.75	0.31	•	•	•	•	•	•	26.82
6 - 8 sec	•	•	0.02	1.01	2.65	2.85	6.94	12.45	7.17	•	•	•	•	•	•	•	33.10
8 - 10 sec	•	•	•	0.15	0.51	18.09	9.61	0.79	•	•	•	•	•	•	•	•	29.15
10 - 12 sec	•	•	•	•	0.01	4.55	1.48	0.08	•	•	•	•	•	•	•	•	6.12
12 - 14 sec	•	•	•	•	•	0.55	0.33	0.03	•	•	•	•	•	•	•	•	0.92
14 - 16 sec	•	•	•	•	•	0.29	0.06	•	•	•	•	•	•	•	•	•	0.35
18 - 20 sec	•	•	•	•	•	•	0.03	•	•	•	•	•	•	•	•	•	0.03
22 - 24 sec	•	•	•	•	•	•	•	•	•	•	•	•	•	•	•	•	•
Total	0.18	0.26	1.38	2.99	5.06	27.32	19.85	18.57	23.27	0.82	0.01	0.01	0.01	0.08	0.09	0.08	100.00



Orsted SJW02 Climatological Wind Rose for July: 1979 - 2015



Joint Frequency Distribution Table

	N	NNE	NE	ENE	E	ESE	SE	SSE	S	SSW	SW	WSW	W	WNW	NW	NNW	Total
calm	0.01	0.02	0.01	0.01	0.01	0.01	0.01	0.07	0.01	0.03	0.06	•	0.01	0.01	0.01	0.02	0.32
0 - 5 kts	0.49	0.66	0.56	0.54	0.59	0.59	0.82	0.97	0.86	1.13	1.06	1.12	0.94	0.83	0.96	0.56	12.67
5 - 10 kts	1.21	1.29	1.32	1.66	1.80	2.20	2.23	2.58	4.28	5.11	5.28	4.38	3.22	2.21	1.91	1.73	42.41
10 - 15 kts	0.97	0.74	1.05	1.47	1.08	0.84	0.89	1.31	4.14	7.84	5.73	2.59	1.61	1.14	0.87	1.00	33.27
15 - 20 kts	0.26	0.36	0.59	0.33	0.21	0.15	0.13	0.08	0.87	3.57	2.03	0.51	0.17	0.24	0.15	0.29	9.93
20 - 25 kts	0.03	0.02	0.10	0.03	0.02	0.03	0.02	0.01	0.18	0.55	0.14	0.01	0.01	•	0.01	0.07	1.27
25 - 30 kts	•	0.01	•	0.01	•	•	•	•	•	0.02	0.01	•	•	•	•	0.01	0.07
30 - 35 kts	0.01	•	•	0.01	•	•	0.02	0.01	•	0.01	•	•	•	•	•	•	0.07
35 - 40 kts	•	•	•	•	•	•	•	•	•	•	•	•	•	•	•	•	•
40 - 45 kts	•	•	•	•	•	•	•	•	•	•	•	•	•	•	•	•	•
45 - 50 kts	•	•	•	•	•	•	•	•	•	•	•	•	•	•	•	•	•
Total	2.99	3.10	3.64	4.07	3.71	3.82	4.12	5.03	10.36	18.26	14.30	8.61	5.97	4.43	3.91	3.68	100.00