

## Orsted SJW02 - June

Latitude: 38.61 N Longitude: 74.67 W

### Weather Days

Wave Height > 3.0 ft Mean: 12.5 days Range: 8.5 - 16.5 days p10:18.5 days p50:12.5 days p90:7.5 days

Wave Height > 4.0 ft Mean: 5.2 days Range: 2.0 - 8.5 days p10:11 days p50:5 days p90:2.5 days

Wave Height > 5.0 ft Mean: 1.9 days Range: 0.1 - 3.7 days p10:5 days p50:2 days p90:0.5 days

Wind Speed > 20.0 knots Mean: 0.4 days Range: 0.0 - 0.8 days p10:1.5 days p50:0.5 days p90:0.5 days

Wind Speed > 25.0 knots Mean: 0.0 days Range: 0.0 - 0.1 days p10:0.5 days p50:0.5 days p90:0.5 days

Wind Speed > 30.0 knots Mean: 0.0 days Range: 0.0 - 0.0 days p10:0.5 days p50:0.5 days p90:0.5 days

### Working Window Probability

Wave Height < 3.0 ft                   3 days or longer: 40%  
  5 days or longer: 9%  
  7 days or longer: 3%

Wave Height < 4.0 ft                   3 days or longer: 63%  
  5 days or longer: 32%  
  7 days or longer: 20%

Wave Height < 5.0 ft                   3 days or longer: 77%  
  5 days or longer: 51%  
  7 days or longer: 40%

### Waves

Mean Height: 2 - 4 ft

The wave heights will occasionally reach 6 - 8 ft, but rarely higher.

Mean Period: 6 - 8 sec

The wave periods will occasionally reach 14 - 16 sec, but rarely longer.

Principle Direction, from: ESE

WindSea/Swell: 13% / 87%

### Winds

Mean Speed: 5 - 10 kts

The winds will occasionally reach 20 - 25 kts, but rarely greater.

Principle Direction, from: SSW

### Currents

Mean Speed: 0.25-0.50 kts

The currents will occasionally reach 1.00-1.25 kts, but rarely greater.

Principle Direction, to: NE

Current Speed > 1.0 knots Mean: 1.1 days Range: 0.0 - 2.4 days p10:4 days p50:1.125 days p80:1 days

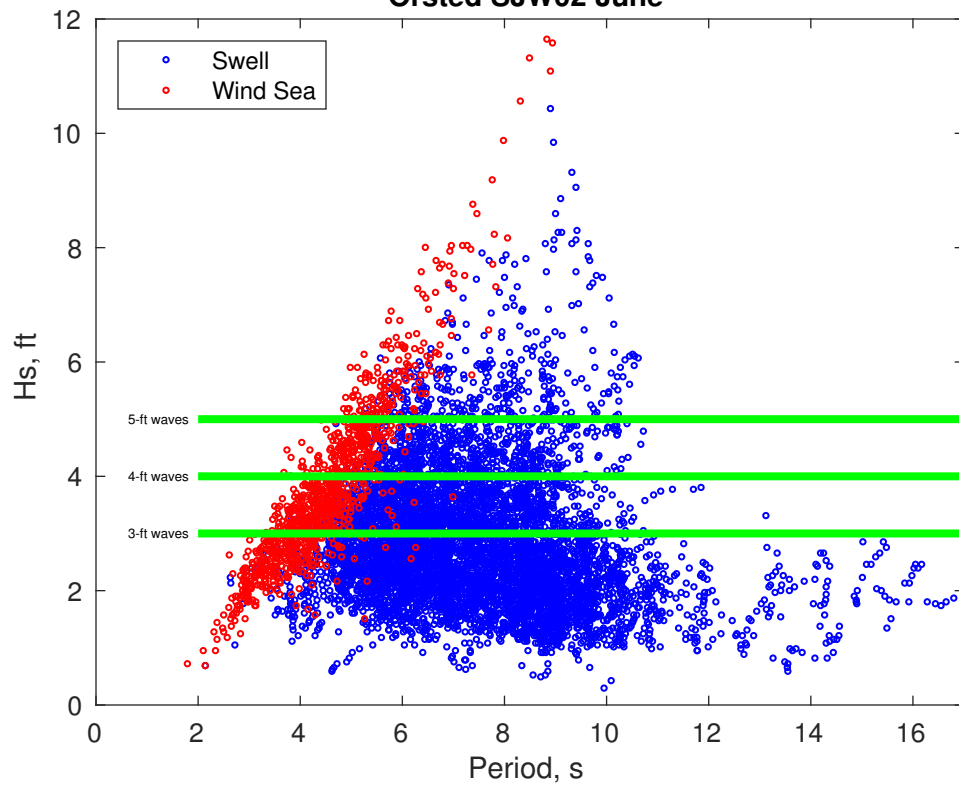
Current Speed > 1.5 knots Mean: 0.0 days Range: 0.0 - 0.0 days p10:1 days p50:0 days p80:1 days

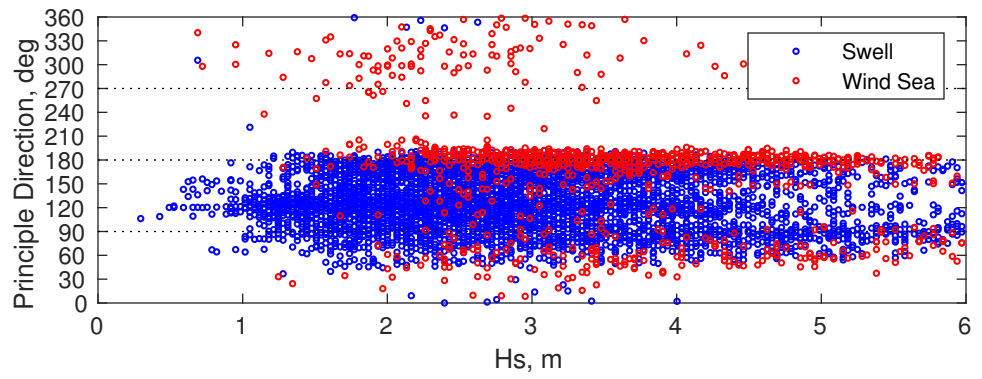
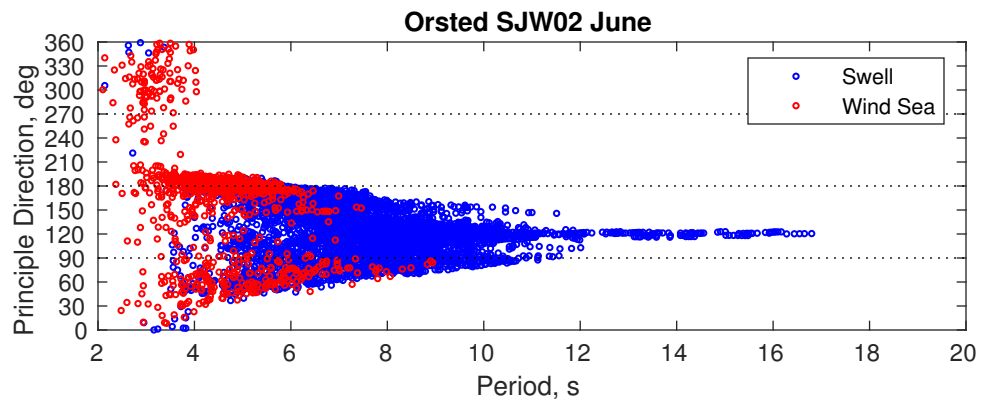
Current Speed > 2.0 knots Mean: 0.0 days Range: 0.0 - 0.0 days p10:1 days p50:0 days p80:1 days

### Severe Storms

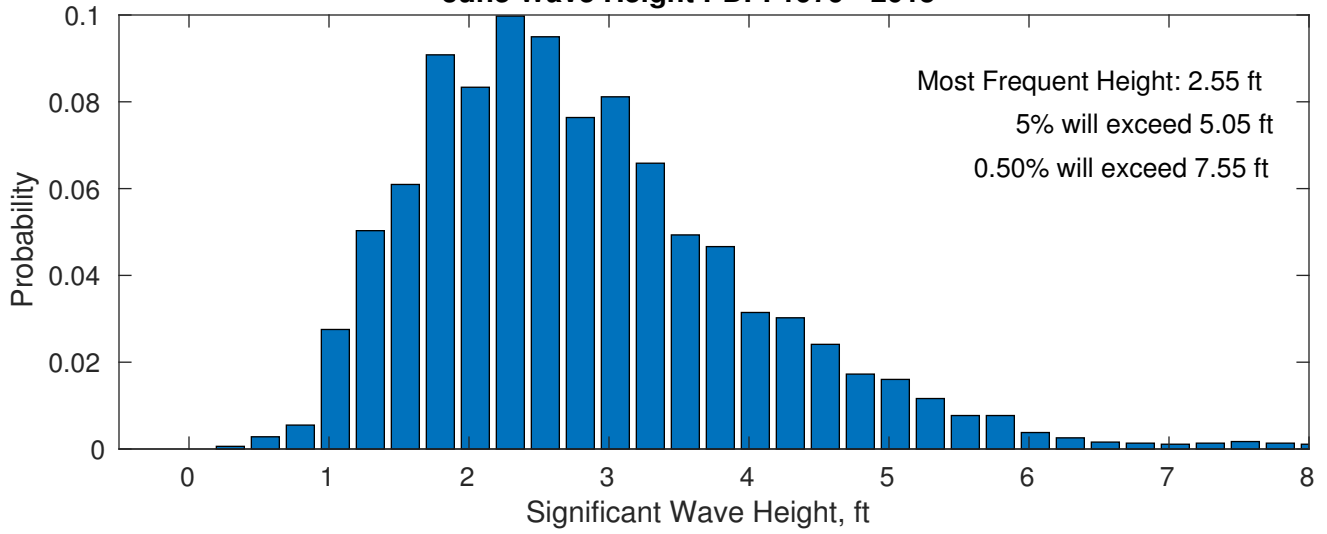
Severe storms with gale force winds and extreme waves are not expected during this month.

Orsted SJW02 June

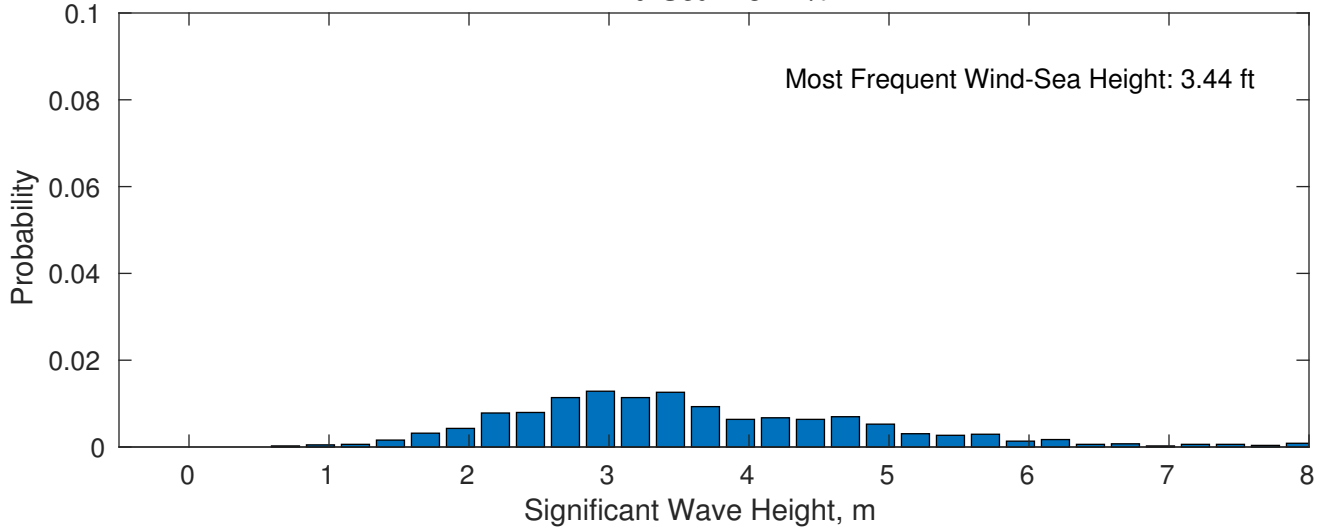




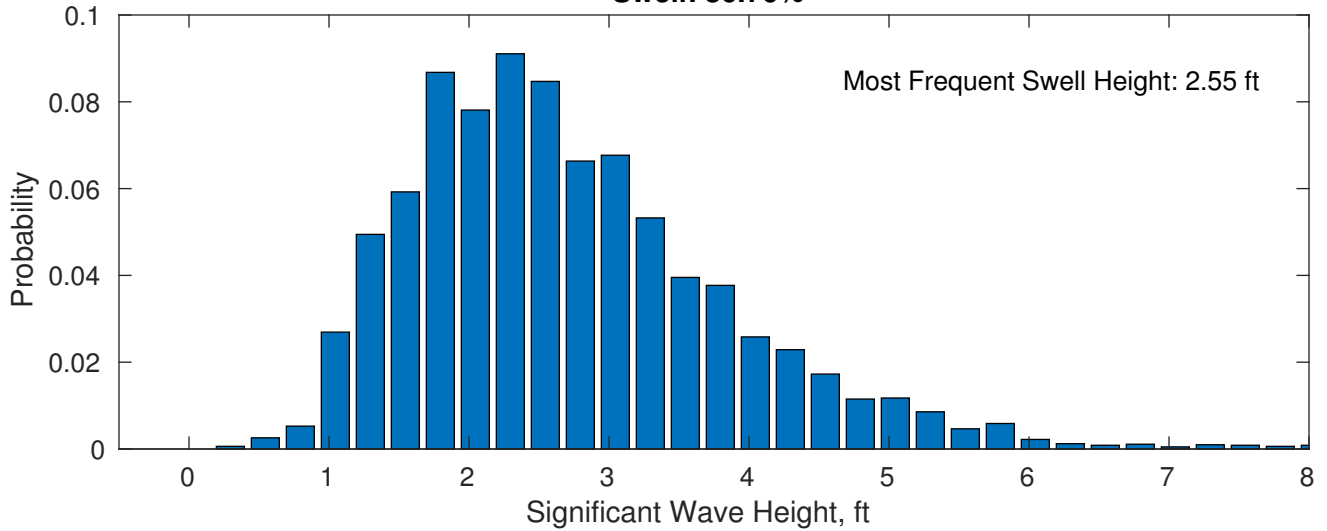
**June Wave Height PDF: 1979 - 2015**



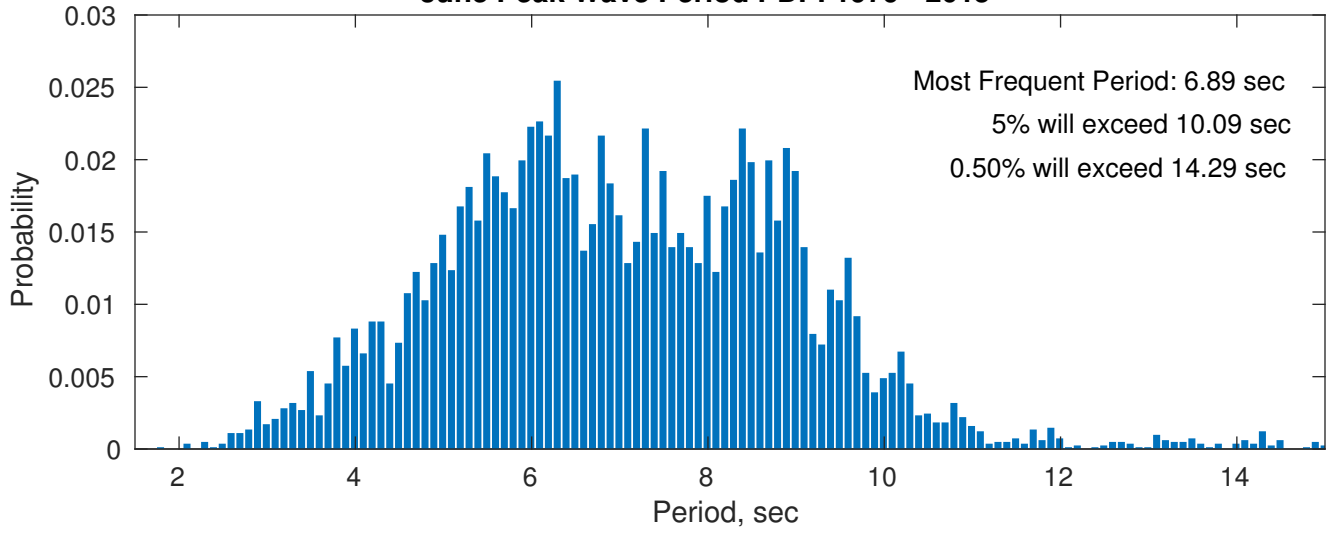
**Wind-Sea: 13.24%**



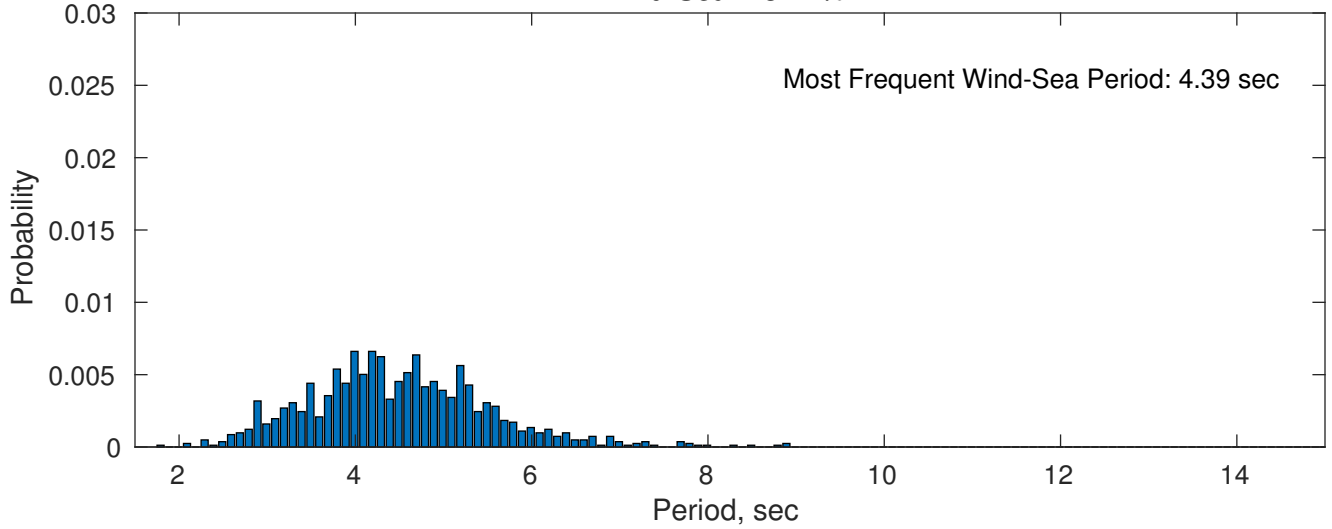
**Swell: 86.76%**



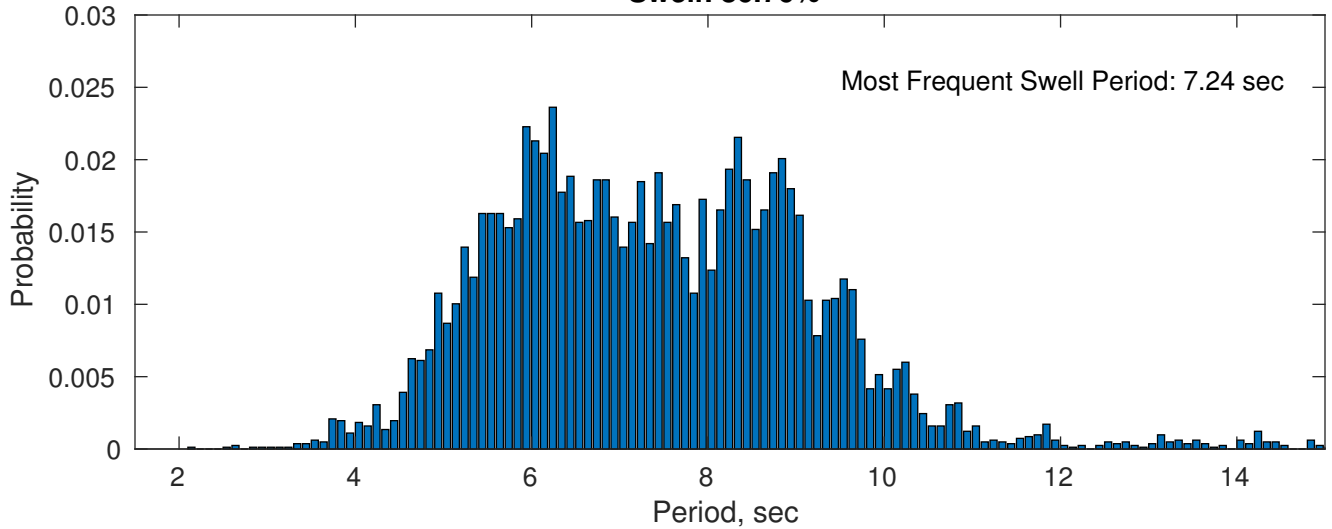
**June Peak Wave Period PDF: 1979 - 2015**



**Wind-Sea: 13.24%**

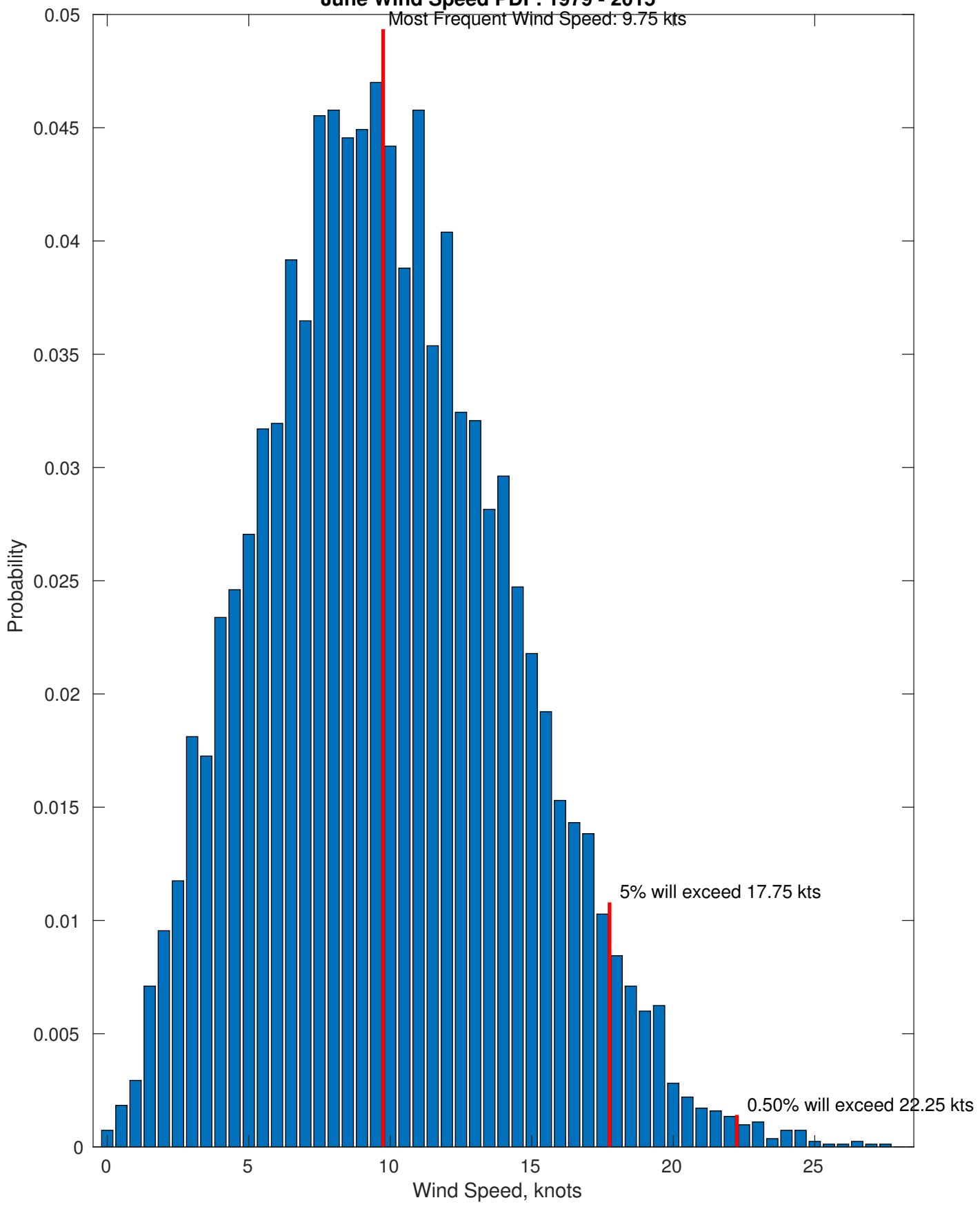


**Swell: 86.76%**

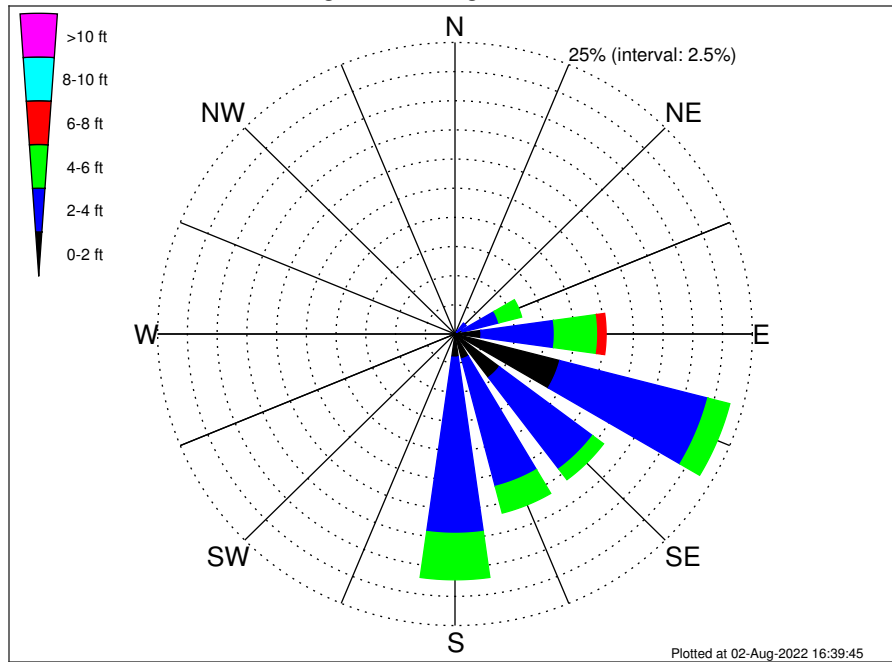


### June Wind Speed PDF: 1979 - 2015

Most Frequent Wind Speed: 9.75 kts



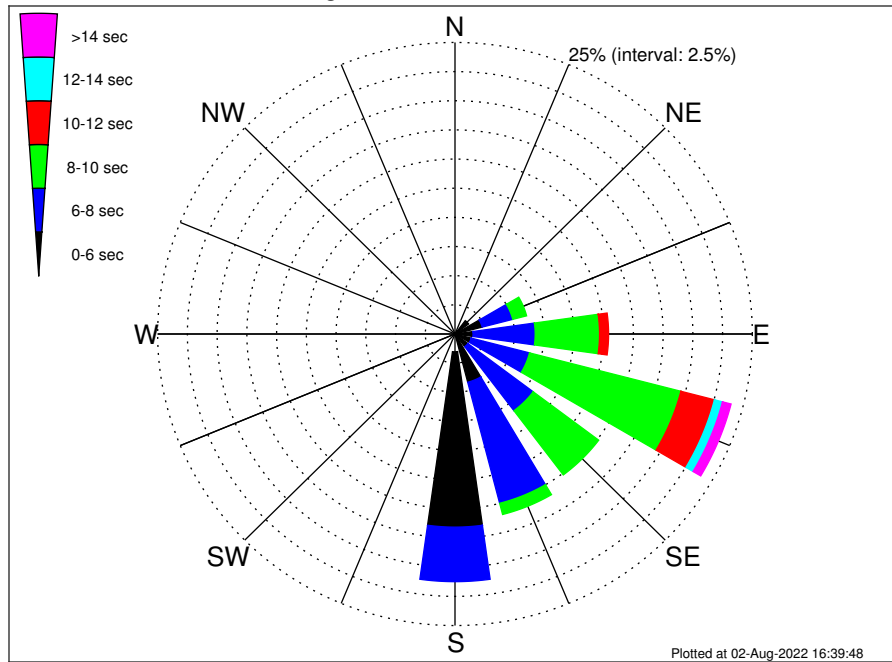
Orsted SJW02 Climatological WaveHeight Rose for June: 1979 - 2015



Joint Frequency Distribution Table

	N	NNE	NE	ENE	E	ESE	SE	SSE	S	SSW	SW	WSW	W	WNW	NW	NNW	Total
calm	•	•	•	0.04	•	0.44	0.12	0.11	0.01	•	•	•	•	0.02	0.02	0.01	0.78
1 - 2 ft	0.01	0.04	0.22	0.60	2.19	8.67	4.55	2.09	1.98	0.06	0.01	0.02	0.09	0.07	0.09	0.02	20.72
2 - 4 ft	0.24	0.17	0.95	3.17	6.17	12.85	9.82	11.30	15.10	0.50	0.04	0.06	0.02	0.21	0.23	0.20	61.04
4 - 6 ft	0.01	0.01	0.34	1.98	3.65	1.91	1.15	2.36	3.98	0.09	•	•	•	0.04	0.04	•	15.56
6 - 8 ft	•	•	0.01	0.32	0.70	0.10	0.07	0.18	0.16	•	•	•	•	•	•	•	1.54
8 - 10 ft	•	•	•	0.09	0.16	0.01	0.01	0.01	•	•	•	•	•	•	•	•	0.28
10 - 12 ft	•	•	•	0.02	0.05	•	•	•	•	•	•	•	•	•	•	•	0.07
12 - 14 ft	•	•	•	•	•	•	•	•	•	•	•	•	•	•	•	•	•
14 - 16 ft	•	•	•	•	•	•	•	•	•	•	•	•	•	•	•	•	•
16 - 18 ft	•	•	•	•	•	•	•	•	•	•	•	•	•	•	•	•	•
> 18 ft	•	•	•	•	•	•	•	•	•	•	•	•	•	•	•	•	•
Total	0.27	0.22	1.53	6.22	12.91	23.98	15.73	16.06	21.24	0.65	0.05	0.09	0.11	0.34	0.38	0.23	100.00

Orsted SJW02 Climatological WavePeriod Rose for June: 1979 - 2015

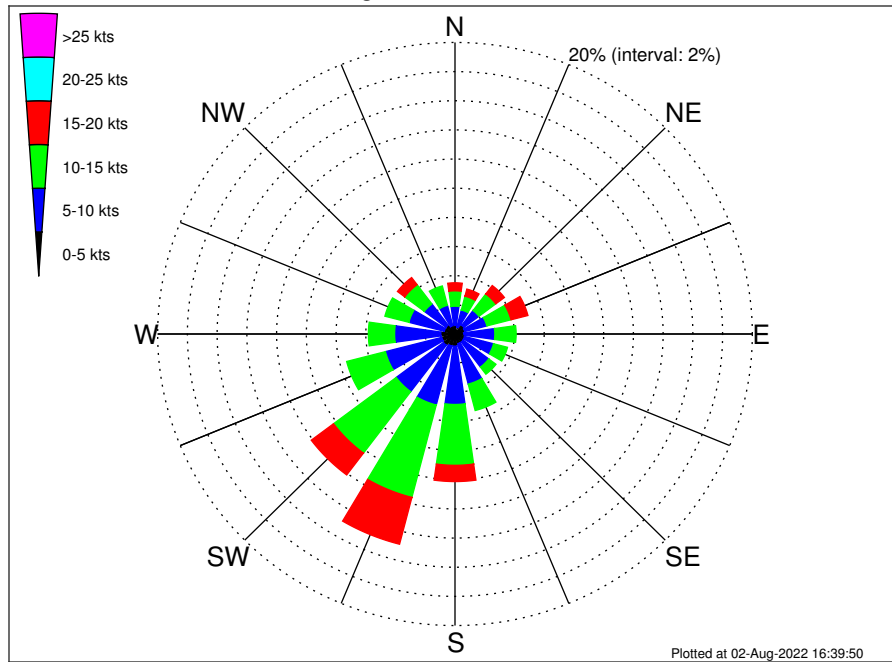


Joint Frequency Distribution Table

	N	NNE	NE	ENE	E	ESE	SE	SSE	S	SSW	SW	WSW	W	WNW	NW	NNW	Total
calm	•	•	•	•	•	•	•	•	•	•	•	•	•	•	•	•	•
1 - 2 sec	•	•	•	•	•	•	•	•	•	•	•	•	•	0.01	•	•	0.01
2 - 4 sec	0.27	0.20	0.27	0.23	0.12	0.15	0.17	0.20	1.53	0.44	0.05	0.09	0.11	0.32	0.35	0.23	4.72
4 - 6 sec	•	0.02	1.16	2.13	1.40	1.26	1.19	4.08	15.03	0.21	•	•	•	0.01	0.02	•	26.51
6 - 8 sec	•	•	0.10	2.66	5.23	5.07	6.88	10.72	4.68	•	•	•	•	•	•	•	35.32
8 - 10 sec	•	•	•	1.20	5.41	13.15	6.89	0.99	•	•	•	•	•	•	•	•	27.64
10 - 12 sec	•	•	•	•	0.76	2.91	0.60	0.07	•	•	•	•	•	•	•	•	4.35
12 - 14 sec	•	•	•	•	•	0.70	•	•	•	•	•	•	•	•	•	•	0.70
14 - 16 sec	•	•	•	•	•	0.64	•	•	•	•	•	•	•	•	•	•	0.64
18 - 20 sec	•	•	•	•	•	0.11	•	•	•	•	•	•	•	•	•	•	0.11
22 - 24 sec	•	•	•	•	•	•	•	•	•	•	•	•	•	•	•	•	•
Total	0.27	0.22	1.53	6.22	12.91	23.98	15.73	16.06	21.24	0.65	0.05	0.09	0.11	0.34	0.38	0.23	100.00



Orsted SJW02 Climatological Wind Rose for June: 1979 - 2015



Joint Frequency Distribution Table

	N	NNE	NE	ENE	E	ESE	SE	SSE	S	SSW	SW	WSW	W	WNW	NW	NNW	Total
calm	0.01	0.04	0.01	0.01	0.02	0.05	0.01	•	•	0.01	0.02	0.01	0.01	0.01	0.01	0.01	0.26
0 - 5 kts	0.58	0.44	0.73	0.66	0.58	0.61	0.67	0.69	0.83	0.83	0.94	0.91	0.94	0.73	0.75	0.58	11.47
5 - 10 kts	1.32	1.22	1.27	1.54	2.08	2.02	2.15	2.86	4.00	4.19	3.99	3.92	3.11	2.46	1.82	1.44	39.41
10 - 15 kts	1.05	0.98	1.42	1.68	1.43	0.97	0.61	1.87	4.17	6.55	5.28	2.69	1.76	1.66	1.65	1.37	35.15
15 - 20 kts	0.55	0.50	0.72	1.18	0.32	0.11	0.16	0.37	1.11	3.32	1.87	0.34	0.22	0.39	0.61	0.48	12.25
20 - 25 kts	0.05	0.07	0.18	0.06	0.01	0.05	0.02	0.04	0.15	0.47	0.09	0.01	0.02	0.06	0.05	0.02	1.36
25 - 30 kts	0.01	•	•	0.04	•	0.01	•	•	•	•	•	•	•	•	0.04	•	0.10
30 - 35 kts	•	•	•	•	•	•	•	•	•	•	•	•	•	•	•	•	•
35 - 40 kts	•	•	•	•	•	•	•	•	•	•	•	•	•	•	•	•	•
40 - 45 kts	•	•	•	•	•	•	•	•	•	•	•	•	•	•	•	•	•
45 - 50 kts	•	•	•	•	•	•	•	•	•	•	•	•	•	•	•	•	•
Total	3.57	3.26	4.35	5.17	4.44	3.82	3.64	5.83	10.27	15.36	12.19	7.88	6.07	5.32	4.93	3.90	100.00