

Orsted SJW02 - May

Latitude: 38.61 N Longitude: 74.67 W

Weather Days

Wave Height > 3.0 ft Mean: 16.2 days Range: 12.8 - 19.7 days p10:20 days p50:16.5 days p90:12 days

Wave Height > 4.0 ft Mean: 9.0 days Range: 5.9 - 12.2 days p10:13 days p50:9 days p90:5 days

Wave Height > 5.0 ft Mean: 4.6 days Range: 2.2 - 6.9 days p10:9 days p50:4.5 days p90:2.5 days

Wind Speed > 20.0 knots Mean: 1.6 days Range: 0.6 - 2.6 days p10:3 days p50:1.5 days p90:0.5 days

Wind Speed > 25.0 knots Mean: 0.2 days Range: 0.0 - 0.5 days p10:1 days p50:0.5 days p90:0.5 days

Wind Speed > 30.0 knots Mean: 0.0 days Range: 0.0 - 0.2 days p10:0.5 days p50:0.5 days p90:0.5 days

Working Window Probability

Wave Height < 3.0 ft 3 days or longer: 32%
 5 days or longer: 7%
 7 days or longer: 1%

Wave Height < 4.0 ft 3 days or longer: 55%
 5 days or longer: 19%
 7 days or longer: 8%

Wave Height < 5.0 ft 3 days or longer: 71%
 5 days or longer: 42%
 7 days or longer: 29%

Waves

Mean Height: 2 - 4 ft

The wave heights will occasionally reach 8 - 10 ft, but rarely higher.

Mean Period: 6 - 8 sec

The wave periods will occasionally reach 12 - 14 sec, but rarely longer.

Principle Direction, from: E

WindSea/Swell: 17% / 83%

Winds

Mean Speed: 10 - 15 kts

The winds will occasionally reach 25 - 30 kts, but rarely greater.

Principle Direction, from: SSW

Currents

Mean Speed: 0.25-0.50 kts

The currents will occasionally reach 1.25-1.50 kts, but rarely greater.

Principle Direction, to: NE

Current Speed > 1.0 knots Mean: 1.2 days Range: 0.1 - 2.4 days p10:4 days p50:1.25 days p80:1 days

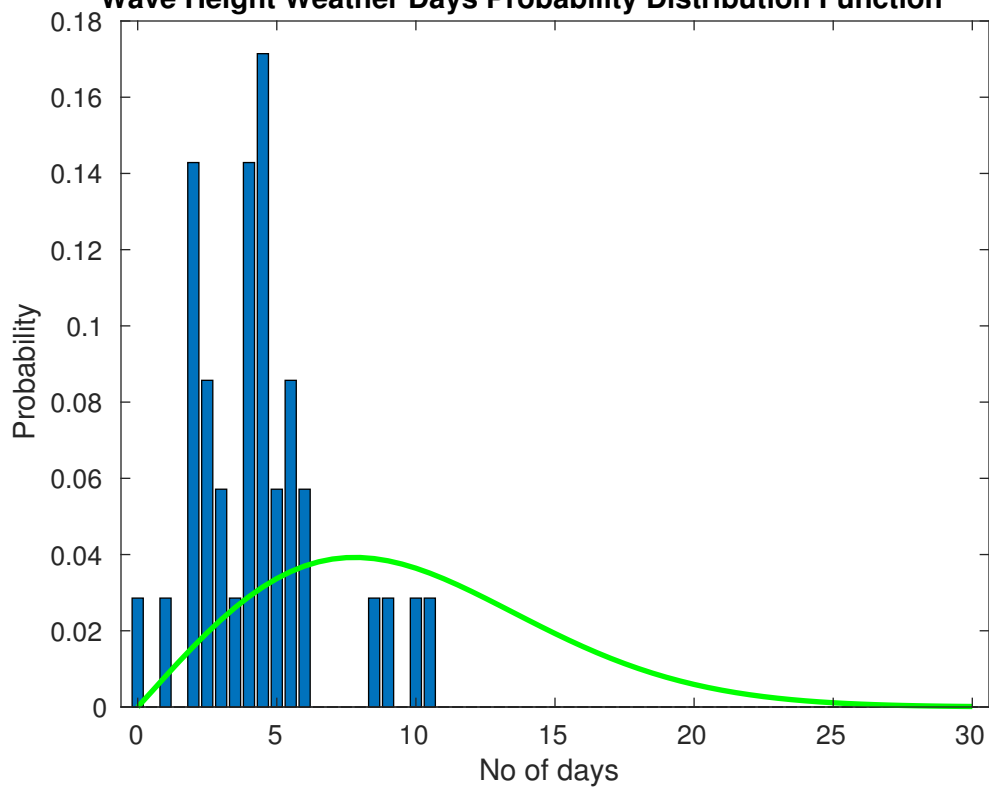
Current Speed > 1.5 knots Mean: 0.2 days Range: 0.0 - 0.8 days p10:2 days p50:0.25 days p80:1 days

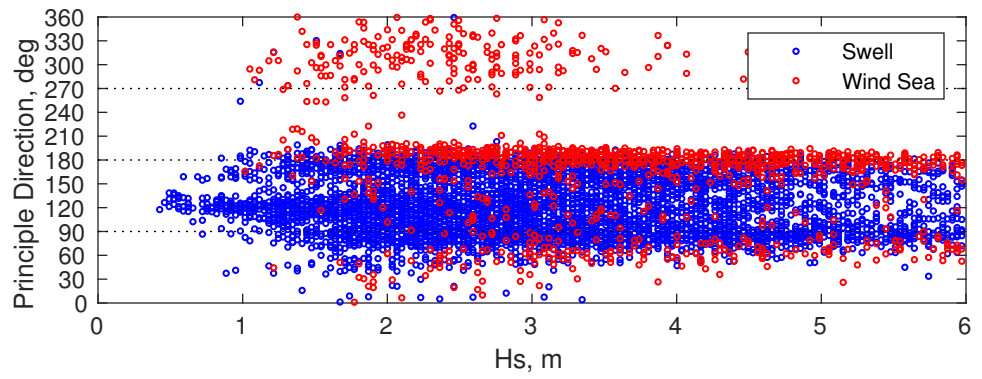
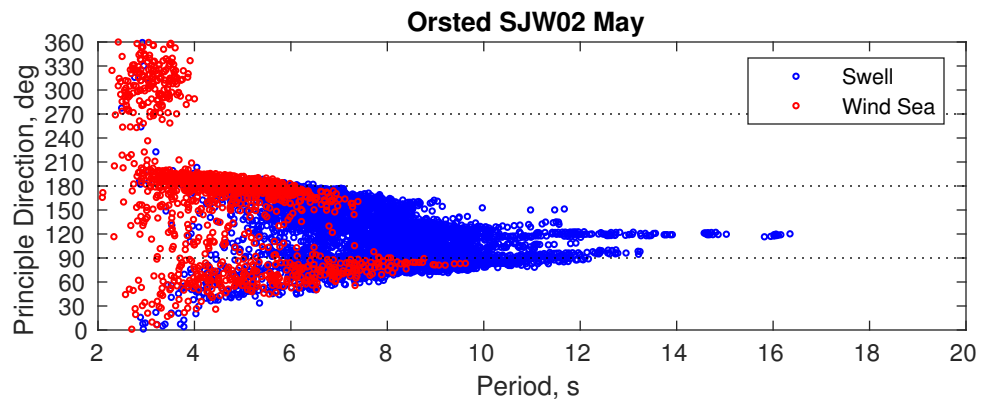
Current Speed > 2.0 knots Mean: 0.1 days Range: 0.0 - 0.3 days p10:1 days p50:0.0625 days p80:1 days

Severe Storms

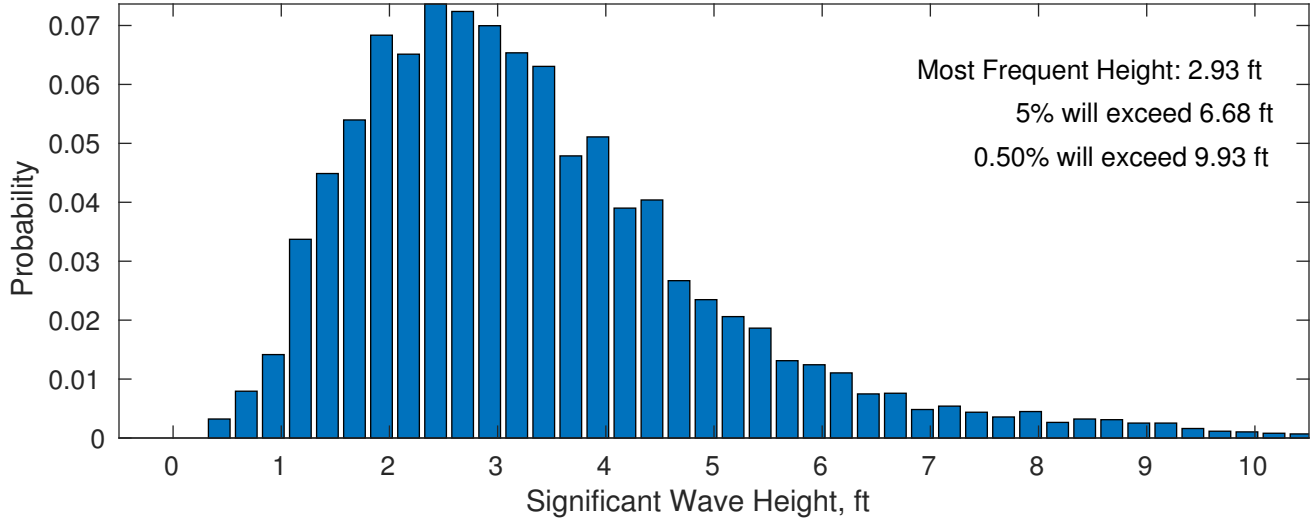
Severe storms with gale force winds and extreme waves are not expected during this month.

Wave Height Weather Days Probability Distribution Function

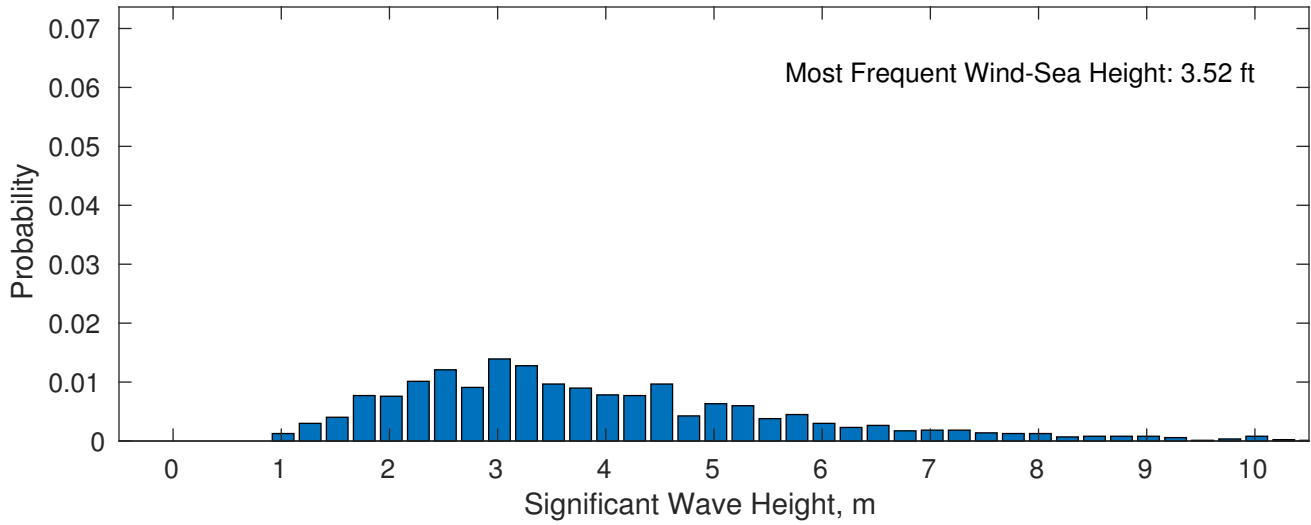




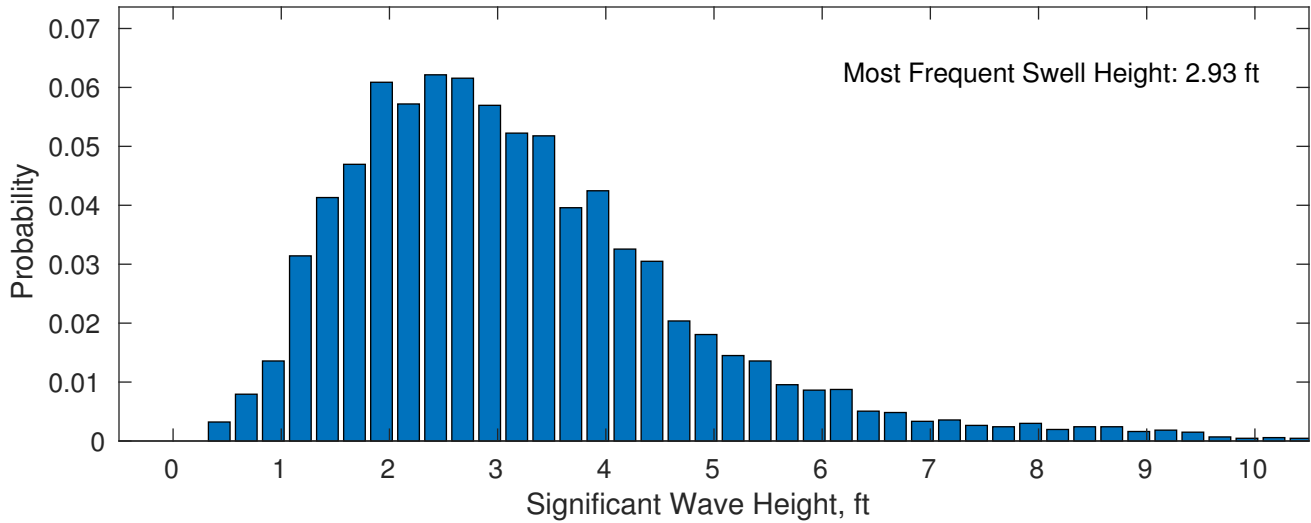
May Wave Height PDF: 1979 - 2015



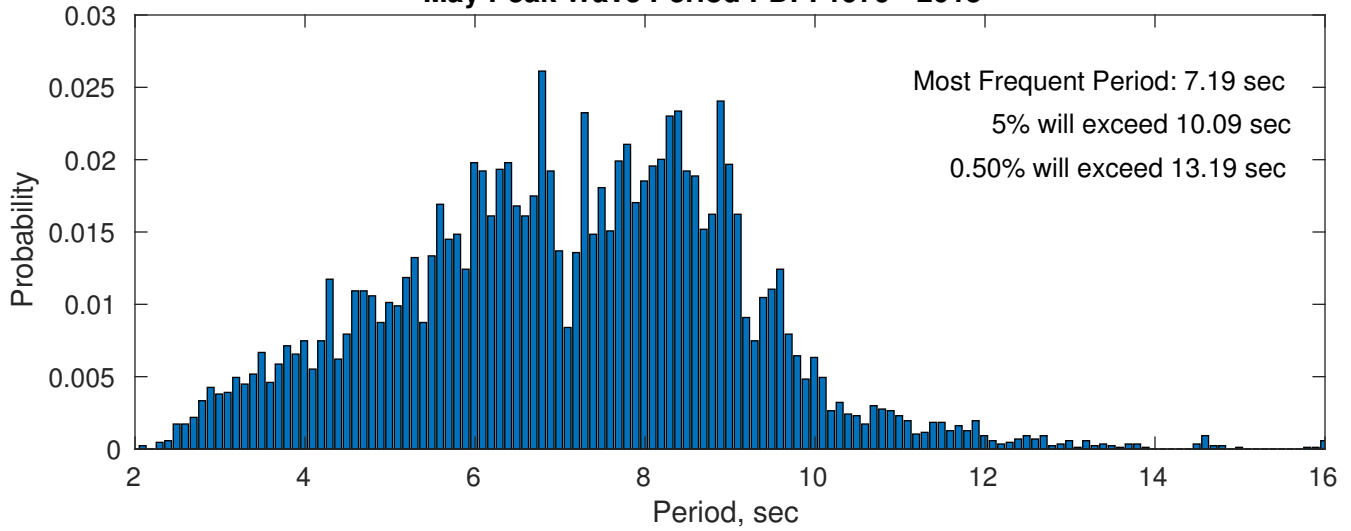
Wind-Sea: 17.48%



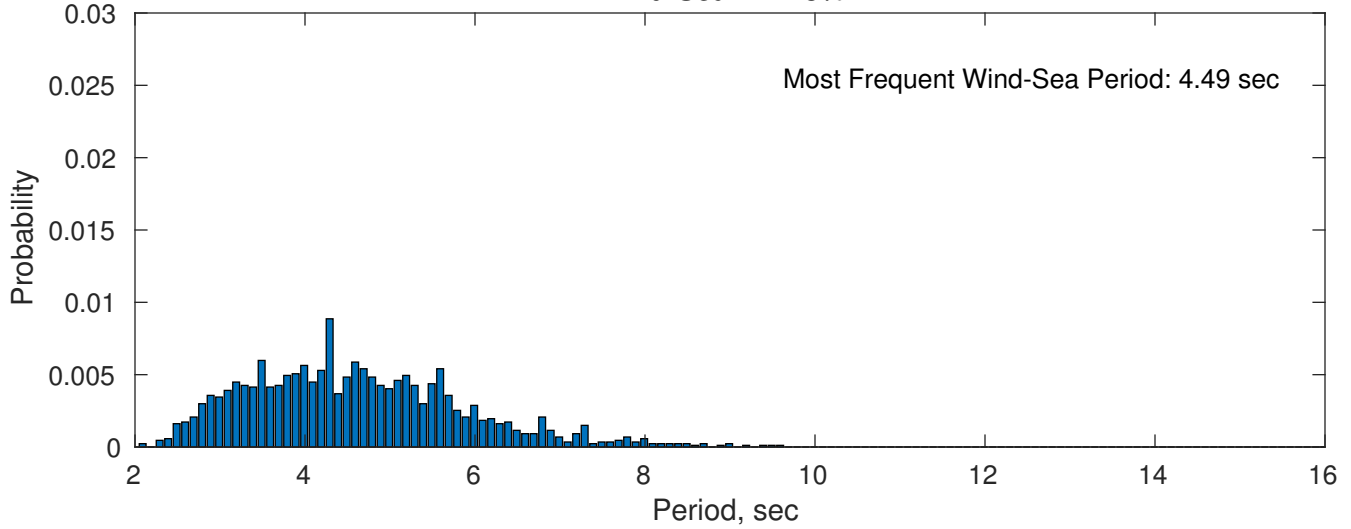
Swell: 82.52%



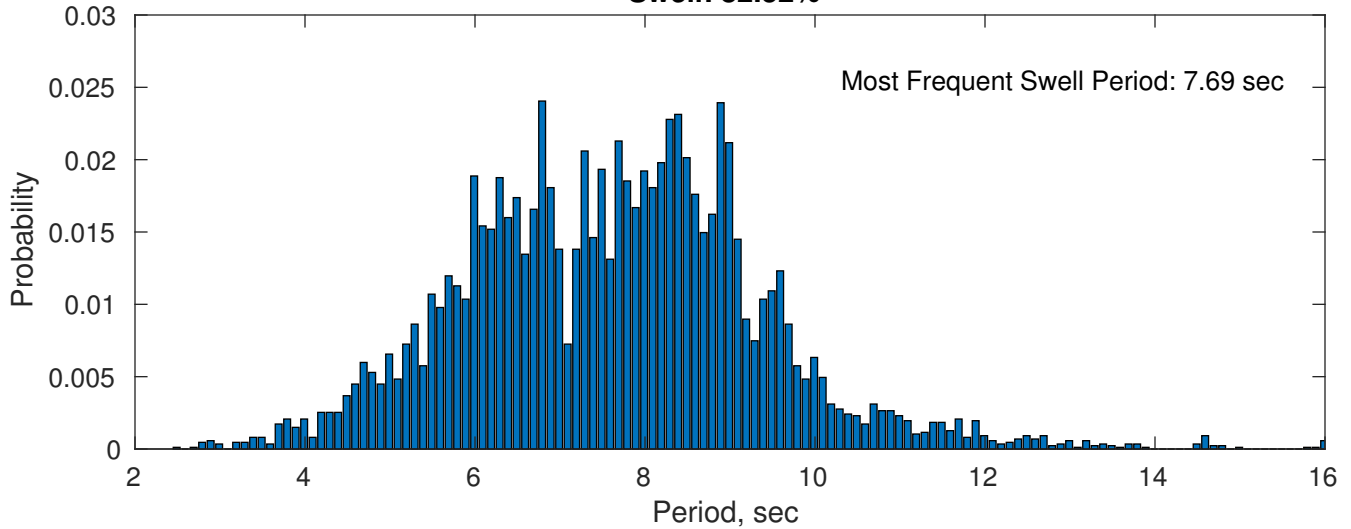
May Peak Wave Period PDF: 1979 - 2015



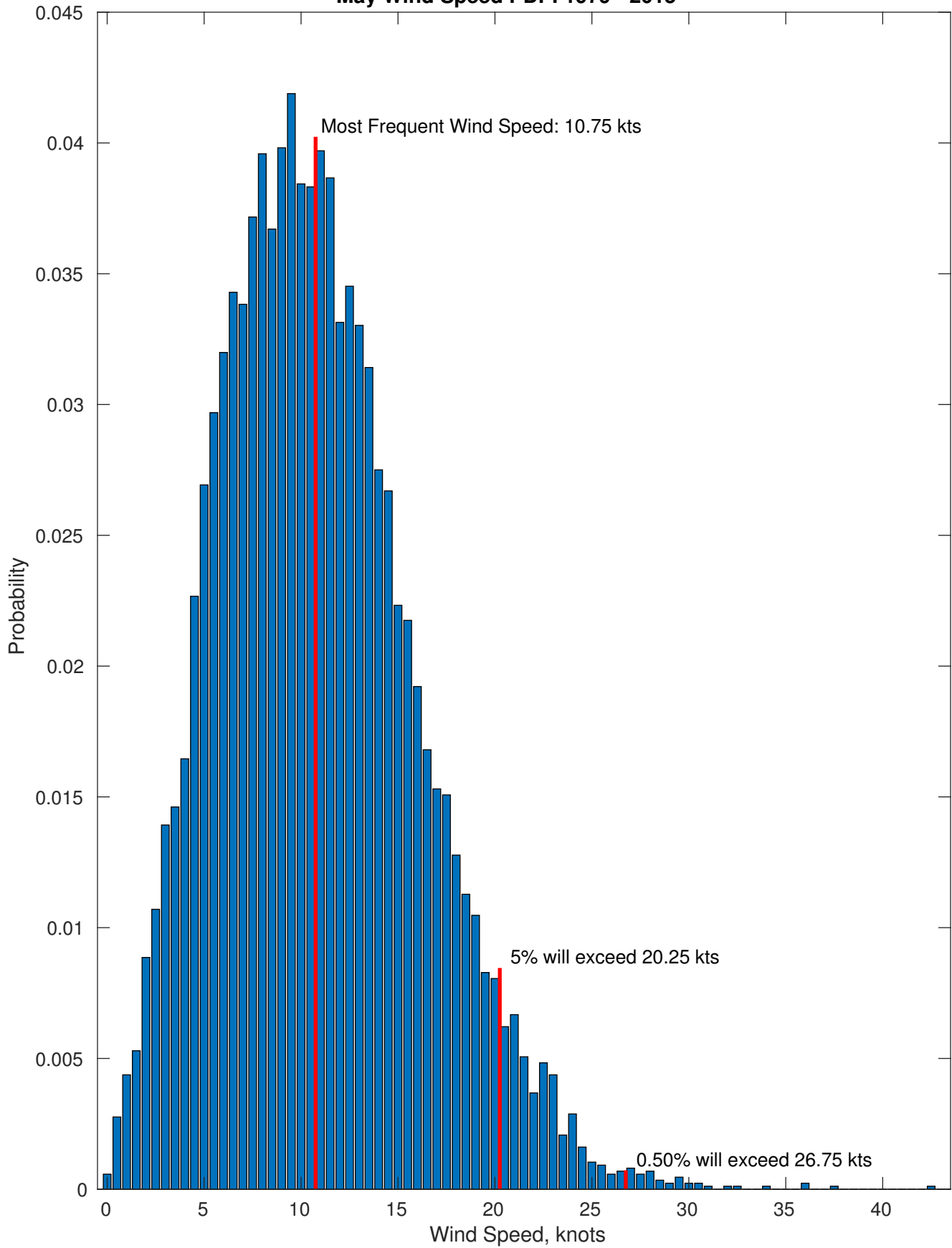
Wind-Sea: 17.48%



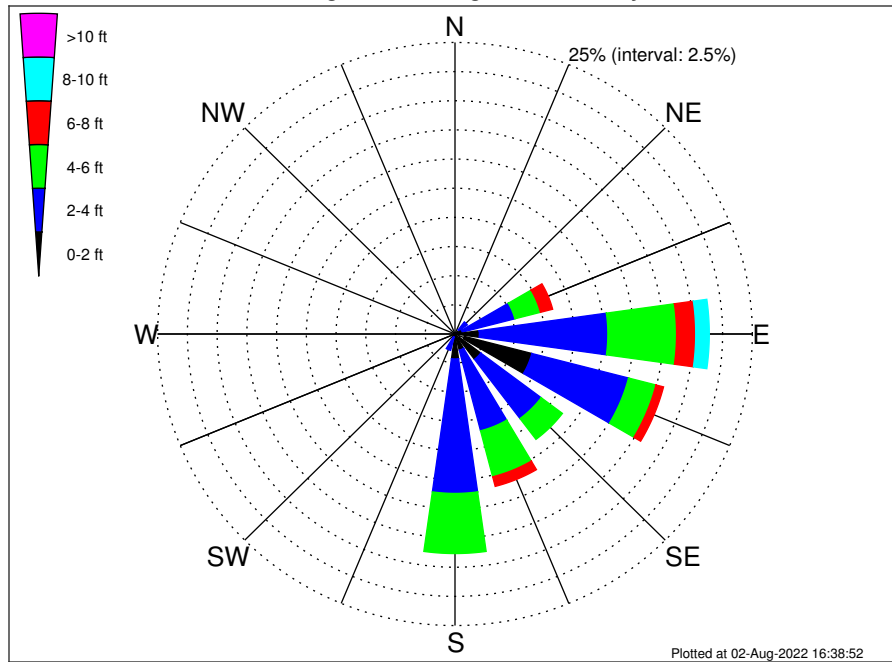
Swell: 82.52%



May Wind Speed PDF: 1979 - 2015



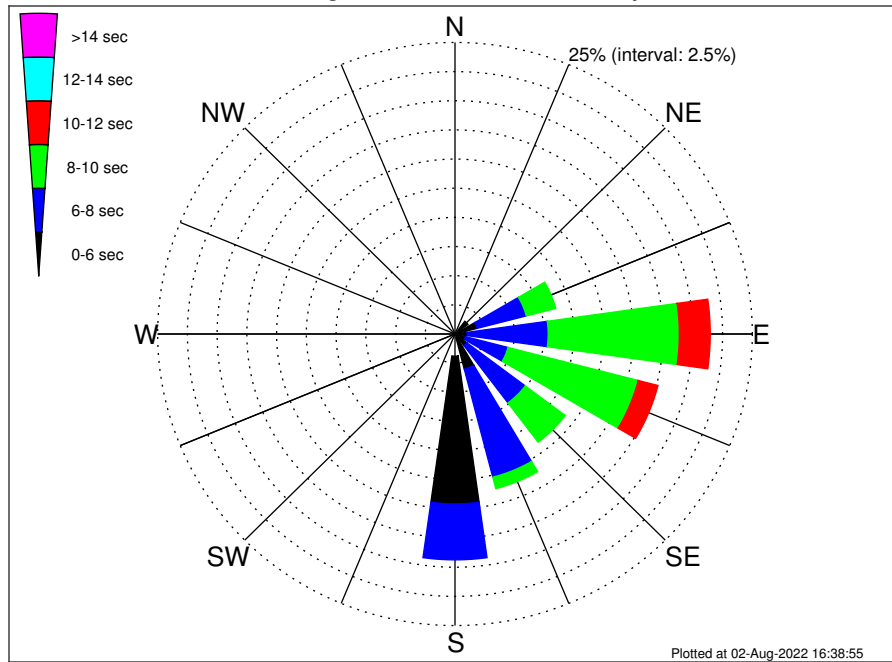
Orsted SJW02 Climatological WaveHeight Rose for May: 1979 - 2015



Joint Frequency Distribution Table

	N	NNE	NE	ENE	E	ESE	SE	SSE	S	SSW	SW	WSW	W	WNW	NW	NNW	Total
calm	•	•	0.02	•	0.05	0.82	0.44	0.17	0.05	•	•	0.01	•	•	•	•	1.55
1 - 2 ft	0.08	0.07	0.44	0.63	2.00	5.86	2.28	1.25	2.09	0.29	0.05	0.05	0.12	0.20	0.24	0.08	15.72
2 - 4 ft	0.20	0.16	0.84	4.57	10.81	8.40	6.36	7.15	11.53	1.16	0.01	0.02	0.14	0.37	0.58	0.28	52.57
4 - 6 ft	•	0.02	0.29	2.22	5.78	2.38	2.23	4.07	5.16	0.10	•	•	•	0.02	0.02	•	22.30
6 - 8 ft	•	•	0.06	1.06	1.61	0.66	0.52	0.85	0.51	•	•	•	•	•	•	•	5.26
8 - 10 ft	•	•	0.01	0.28	1.14	0.33	0.08	0.22	0.03	•	•	•	•	•	•	•	2.09
10 - 12 ft	•	•	•	•	0.37	0.05	•	0.02	•	•	•	•	•	•	•	•	0.44
12 - 14 ft	•	•	•	0.02	0.02	0.01	•	•	•	•	•	•	•	•	•	•	0.06
14 - 16 ft	•	•	•	0.01	•	•	•	•	•	•	•	•	•	•	•	•	0.01
16 - 18 ft	•	•	•	•	•	•	•	•	•	•	•	•	•	•	•	•	•
> 18 ft	•	•	•	•	•	•	•	•	•	•	•	•	•	•	•	•	•
Total	0.28	0.25	1.66	8.79	21.77	18.50	11.91	13.74	19.37	1.55	0.06	0.08	0.25	0.59	0.84	0.36	100.00

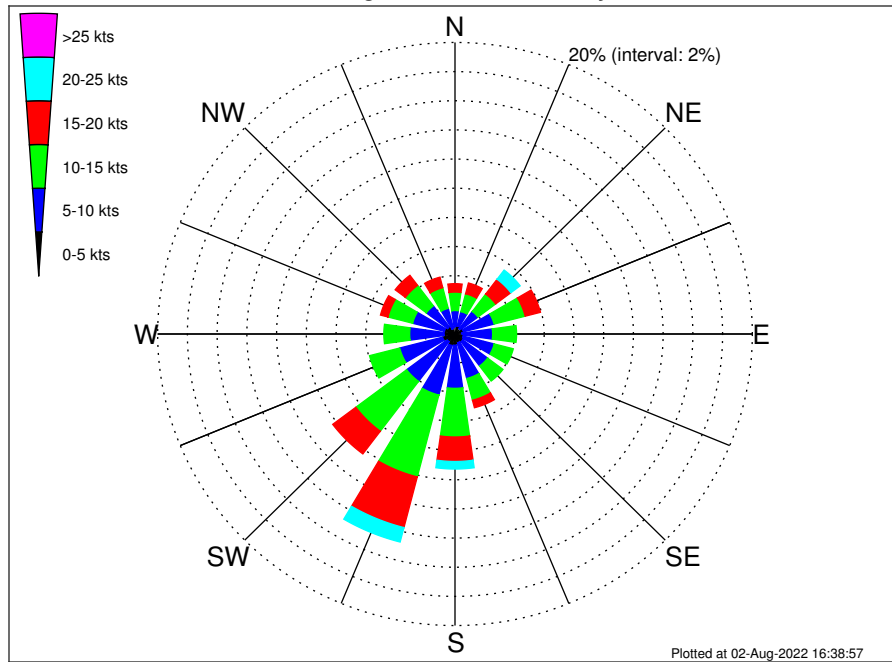
Orsted SJW02 Climatological WavePeriod Rose for May: 1979 - 2015



Joint Frequency Distribution Table

	N	NNE	NE	ENE	E	ESE	SE	SSE	S	SSW	SW	WSW	W	WNW	NW	NNW	Total
calm
1 - 2 sec
2 - 4 sec	0.28	0.20	0.32	0.23	0.14	0.18	0.22	0.32	1.90	0.98	0.06	0.08	0.25	0.59	0.84	0.36	6.94
4 - 6 sec	.	0.06	1.05	1.70	0.90	0.72	1.04	2.78	12.67	0.58	21.50
6 - 8 sec	.	.	0.29	4.26	6.80	3.69	6.14	9.57	4.80	35.56
8 - 10 sec	.	.	.	2.55	11.02	11.31	4.21	1.01	30.12
10 - 12 sec	.	.	.	0.05	2.60	1.71	0.30	0.05	4.71
12 - 14 sec	0.31	0.58	0.89
14 - 16 sec	0.21	0.21
18 - 20 sec	0.09	0.09
22 - 24 sec
Total	0.28	0.25	1.66	8.79	21.77	18.50	11.91	13.74	19.37	1.55	0.06	0.08	0.25	0.59	0.84	0.36	100.00

Orsted SJW02 Climatological Wind Rose for May: 1979 - 2015



Joint Frequency Distribution Table

	N	NNE	NE	ENE	E	ESE	SE	SSE	S	SSW	SW	WSW	W	WNW	NW	NNW	Total
calm	0.03	0.01	•	0.01	0.03	0.02	0.05	0.05	0.02	0.02	•	0.01	•	0.06	0.01	•	0.33
0 - 5 kts	0.46	0.55	0.46	0.58	0.44	0.55	0.61	0.58	0.75	0.79	0.66	0.85	0.74	0.68	0.61	0.39	9.69
5 - 10 kts	1.12	1.02	1.47	2.13	2.06	2.15	2.09	2.53	2.96	3.51	3.42	2.98	2.31	2.21	1.80	1.43	35.19
10 - 15 kts	1.27	1.27	1.50	2.16	1.61	1.32	1.29	1.54	3.34	5.80	4.28	2.09	1.74	1.71	1.76	1.46	34.14
15 - 20 kts	0.58	0.76	1.28	1.06	0.40	0.17	0.30	0.53	1.68	3.59	1.94	0.45	0.46	0.52	0.86	0.75	15.33
20 - 25 kts	0.08	0.32	0.78	0.46	0.13	0.07	0.02	0.13	0.52	1.02	0.33	0.05	0.05	0.23	0.25	0.10	4.55
25 - 30 kts	0.03	0.10	0.24	0.06	0.05	0.01	0.01	•	0.05	0.05	•	•	•	0.03	•	•	0.63
30 - 35 kts	•	0.01	•	•	0.02	•	•	0.01	0.01	0.03	•	•	•	•	•	•	0.09
35 - 40 kts	•	0.02	•	•	•	•	•	•	0.01	•	•	•	•	•	•	•	0.03
40 - 45 kts	•	•	0.01	•	•	•	•	•	•	•	•	•	•	•	•	•	0.01
45 - 50 kts	•	•	•	•	•	•	•	•	•	•	•	•	•	•	•	•	•
Total	3.57	4.07	5.74	6.46	4.74	4.30	4.37	5.36	9.33	14.82	10.63	6.43	5.29	5.44	5.29	4.13	100.00