

## RPS Venus Well - Namibia 29316 - December

Latitude: 29.48 S Longitude: 13.26 E

### Weather Days

Wave Height > 6.0 ft Mean: 20.5 days Range: 18.1 - 22.9 days p50:26.5 days p75:24 days p90:23 days

Wave Height > 7.0 ft Mean: 15.4 days Range: 12.0 - 18.8 days p50:22 days p75:19.5 days p90:17.5 days

Wave Height > 8.0 ft Mean: 10.8 days Range: 6.9 - 14.6 days p50:17 days p75:15 days p90:12.5 days

Wind Speed > 10.0 knots Mean: 25.1 days Range: 22.8 - 27.5 days p50:25.5 days p75:24 days p90:21.5 days

Wind Speed > 15.0 knots Mean: 17.0 days Range: 13.8 - 20.2 days p50:17.5 days p75:15 days p90:12.5 days

Wind Speed > 20.0 knots Mean: 7.1 days Range: 4.1 - 10.0 days p50:7.5 days p75:5 days p90:3.5 days

### Working Window

Wave Height < 6.0 ft  
A 1 day or longer window will statistically occur 1.6 times per month  
A 2 day or longer window will statistically occur 0.6 times per month  
A 3 day or longer window will statistically occur 0.1 times per month

Wave Height < 7.0 ft  
A 1 day or longer window will statistically occur 2.9 times per month  
A 2 day or longer window will statistically occur 1.5 times per month  
A 3 day or longer window will statistically occur 0.5 times per month

Wave Height < 8.0 ft  
A 1 day or longer window will statistically occur 3.8 times per month  
A 2 day or longer window will statistically occur 2.4 times per month  
A 3 day or longer window will statistically occur 1.5 times per month

### Waves

Mean Height: 8 - 10 ft

The wave heights will occasionally reach 14 - 16 ft, but rarely higher.

Mean Period: 10 - 12 sec

The wave periods will occasionally reach 18 - 20 sec, but rarely longer.

Principle Direction, from: SW

WindSea/Swell: 14% / 86%

### Winds

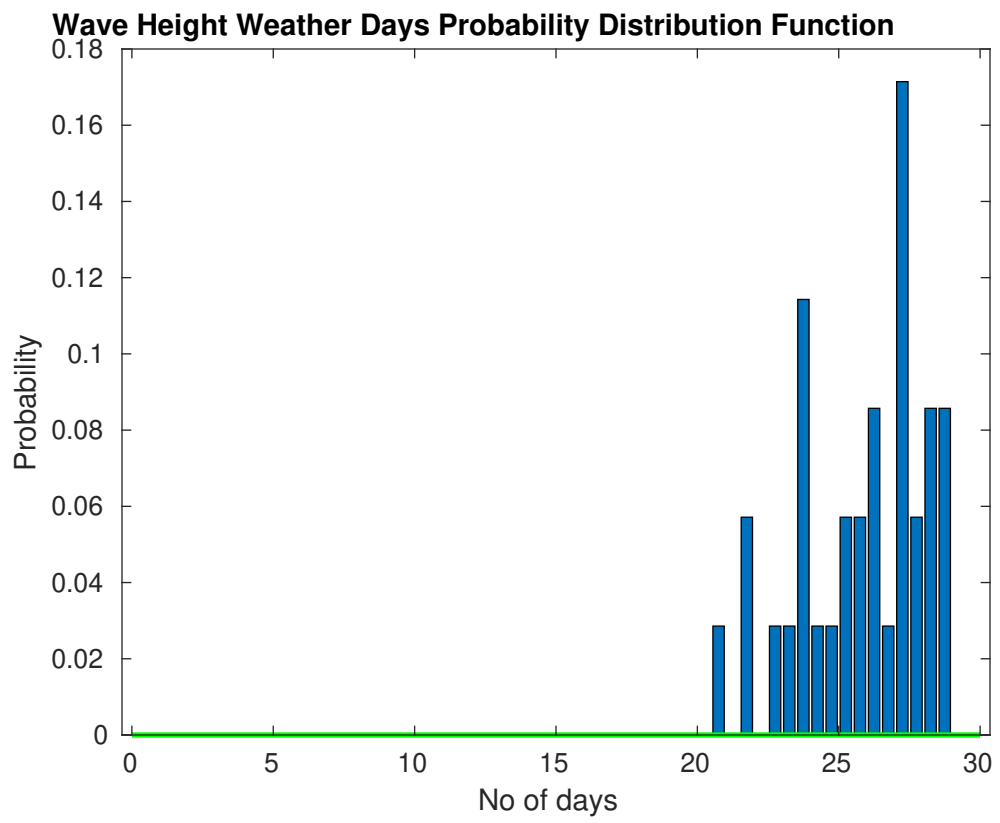
Mean Speed: 15 - 20 kts

The winds will occasionally reach 25 - 30 kts, but rarely greater.

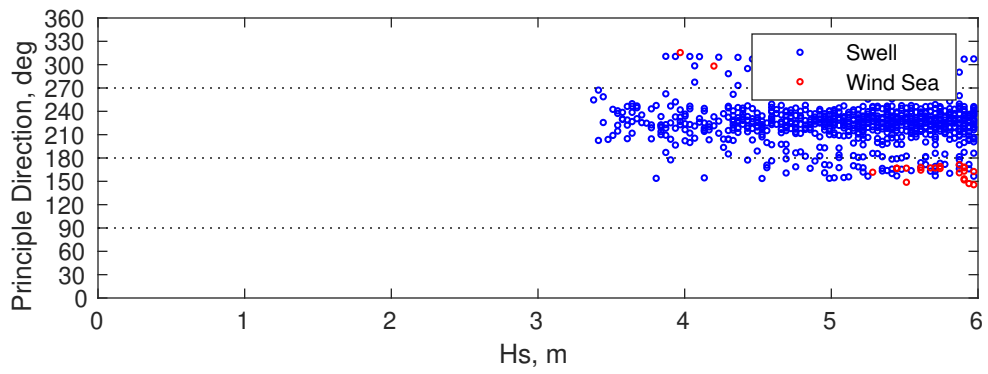
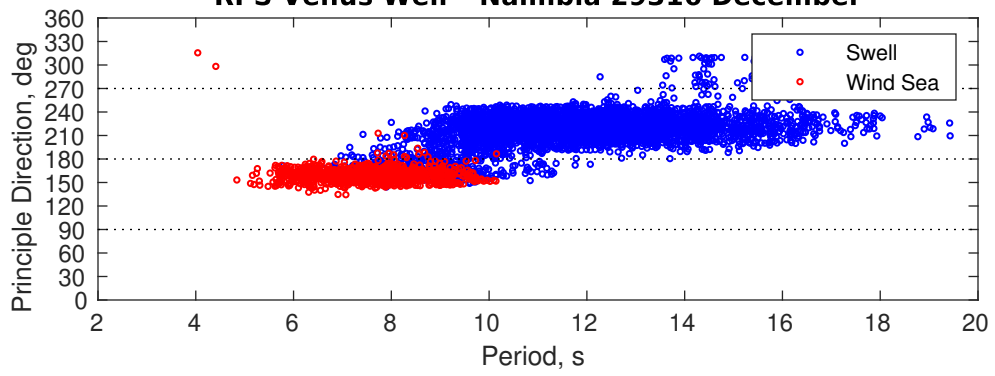
Principle Direction, from: SSE

### Severe Storms

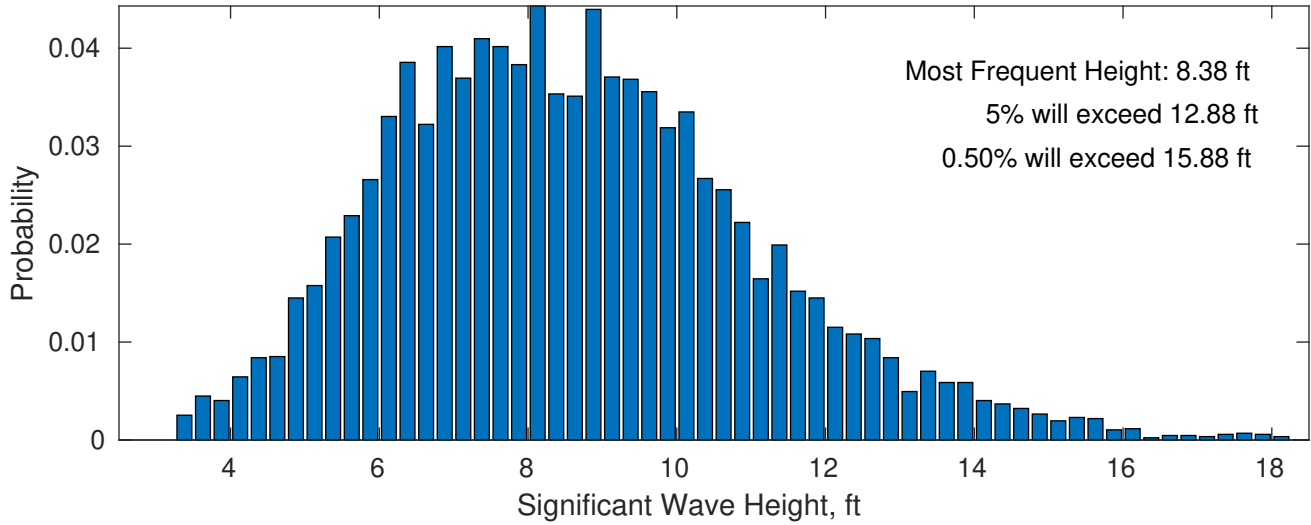
Severe storms with gale force winds and extreme waves are not expected during this month.



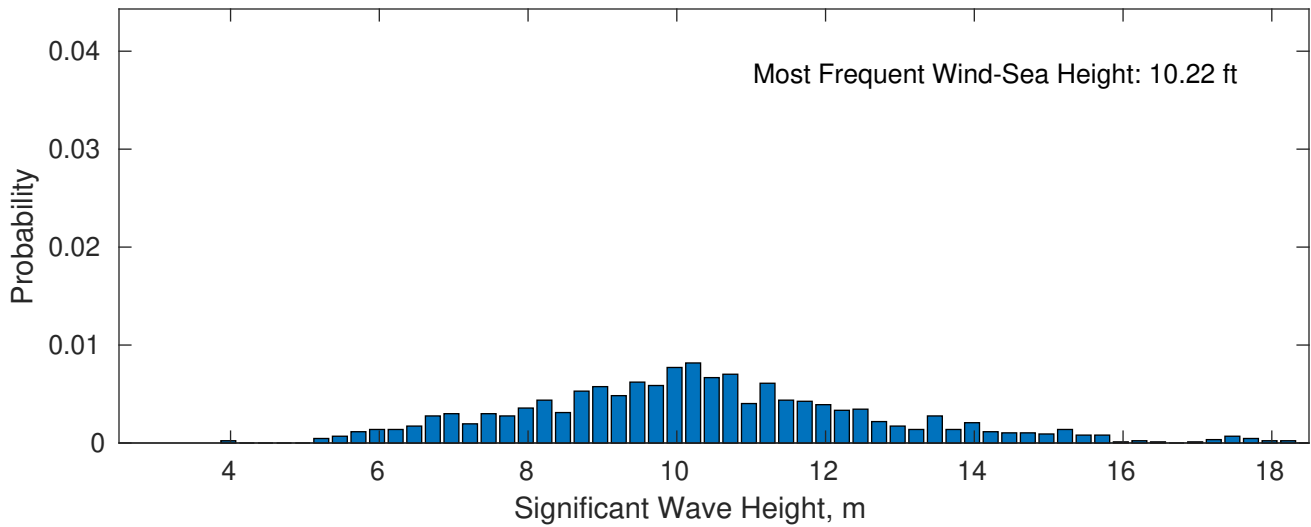
### RPS Venus Well - Namibia 29316 December



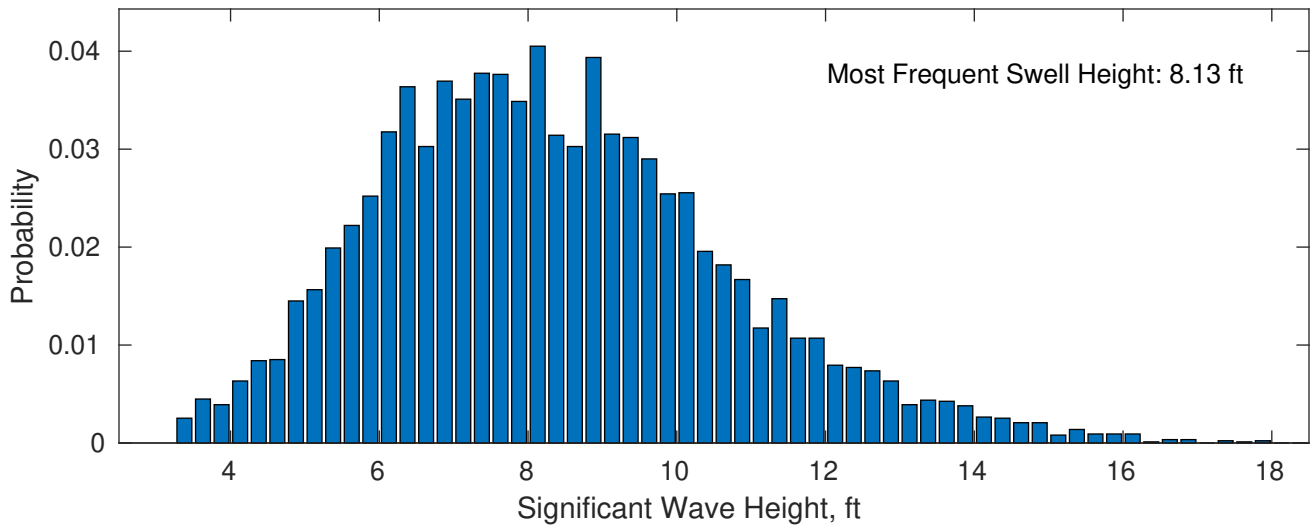
**December Wave Height PDF: 1979 - 2015**



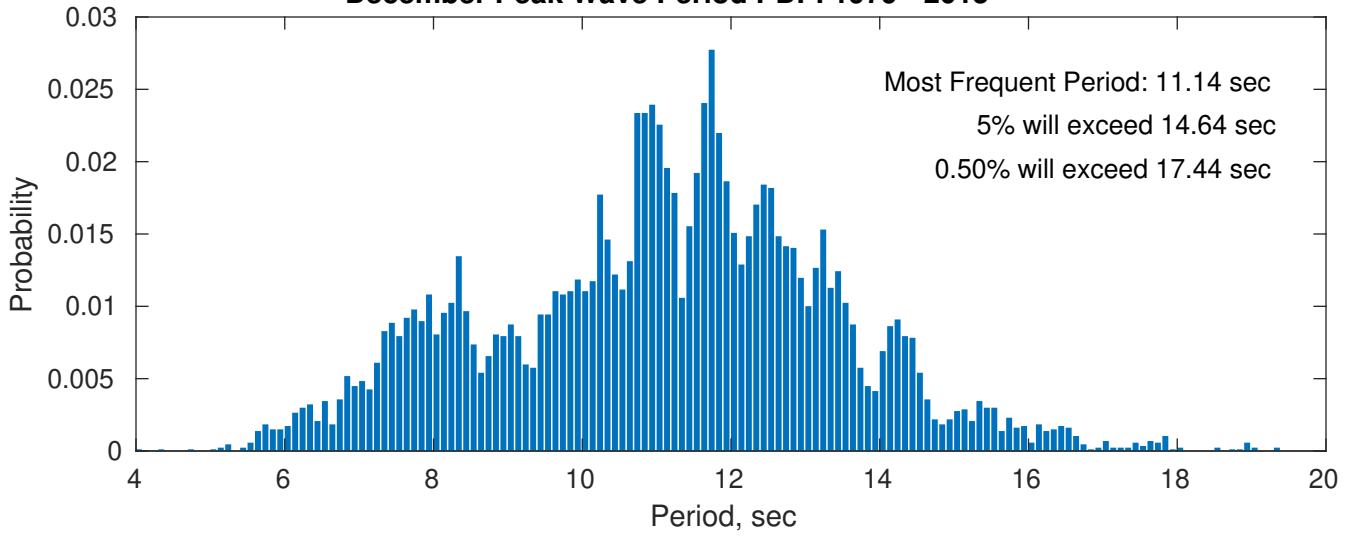
**Wind-Sea: 13.97%**



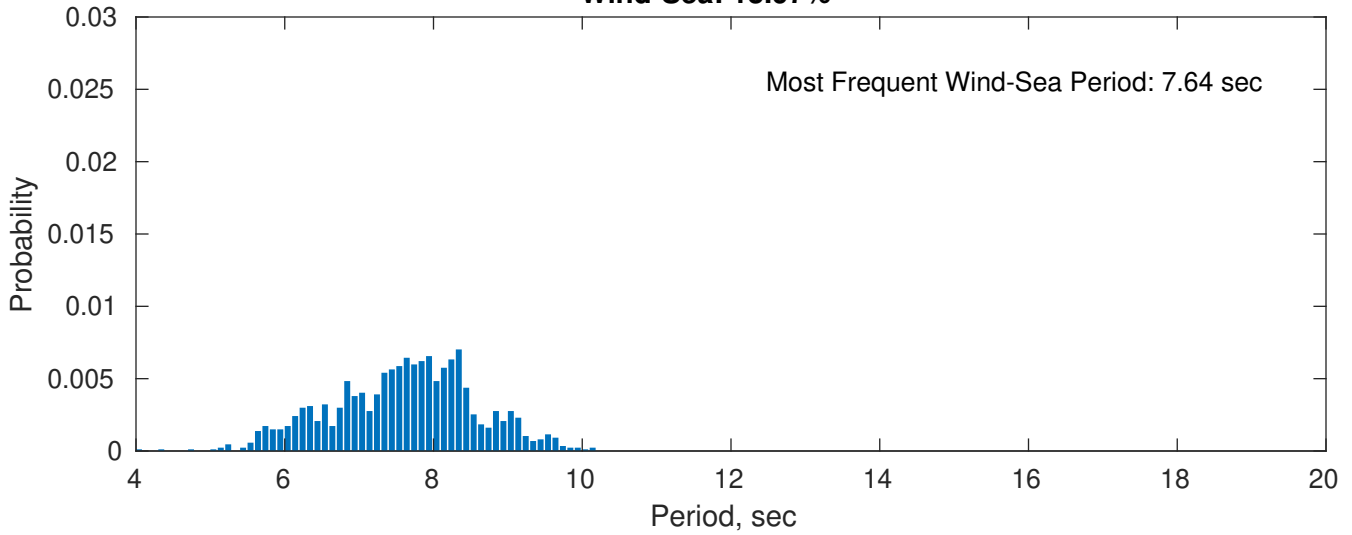
**Swell: 86.03%**



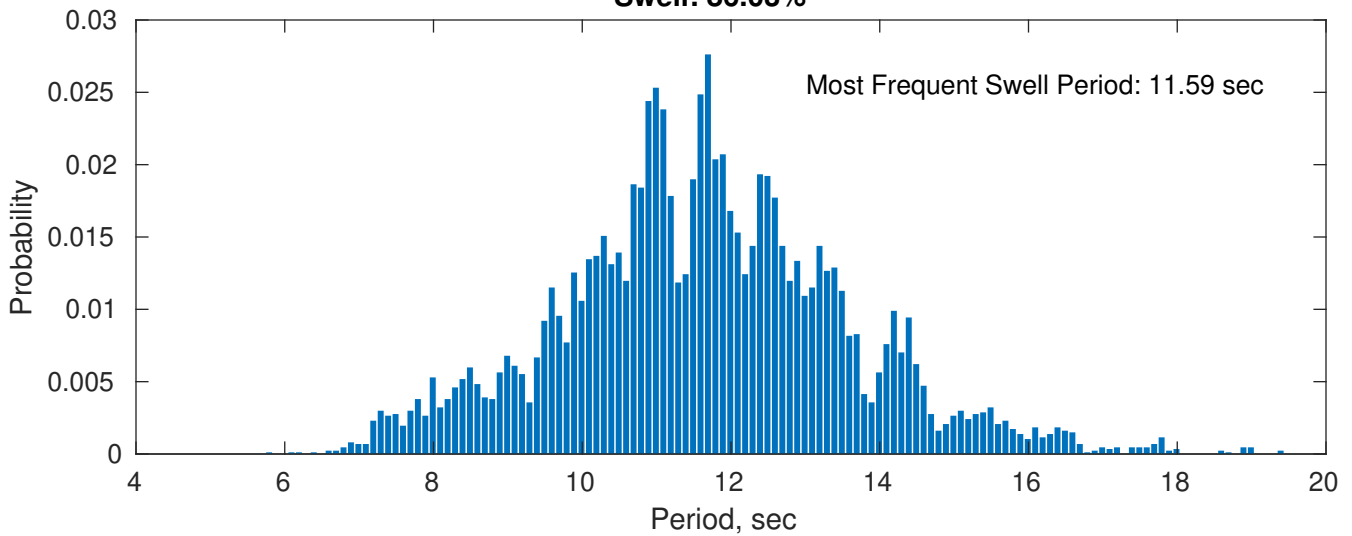
### December Peak Wave Period PDF: 1979 - 2015



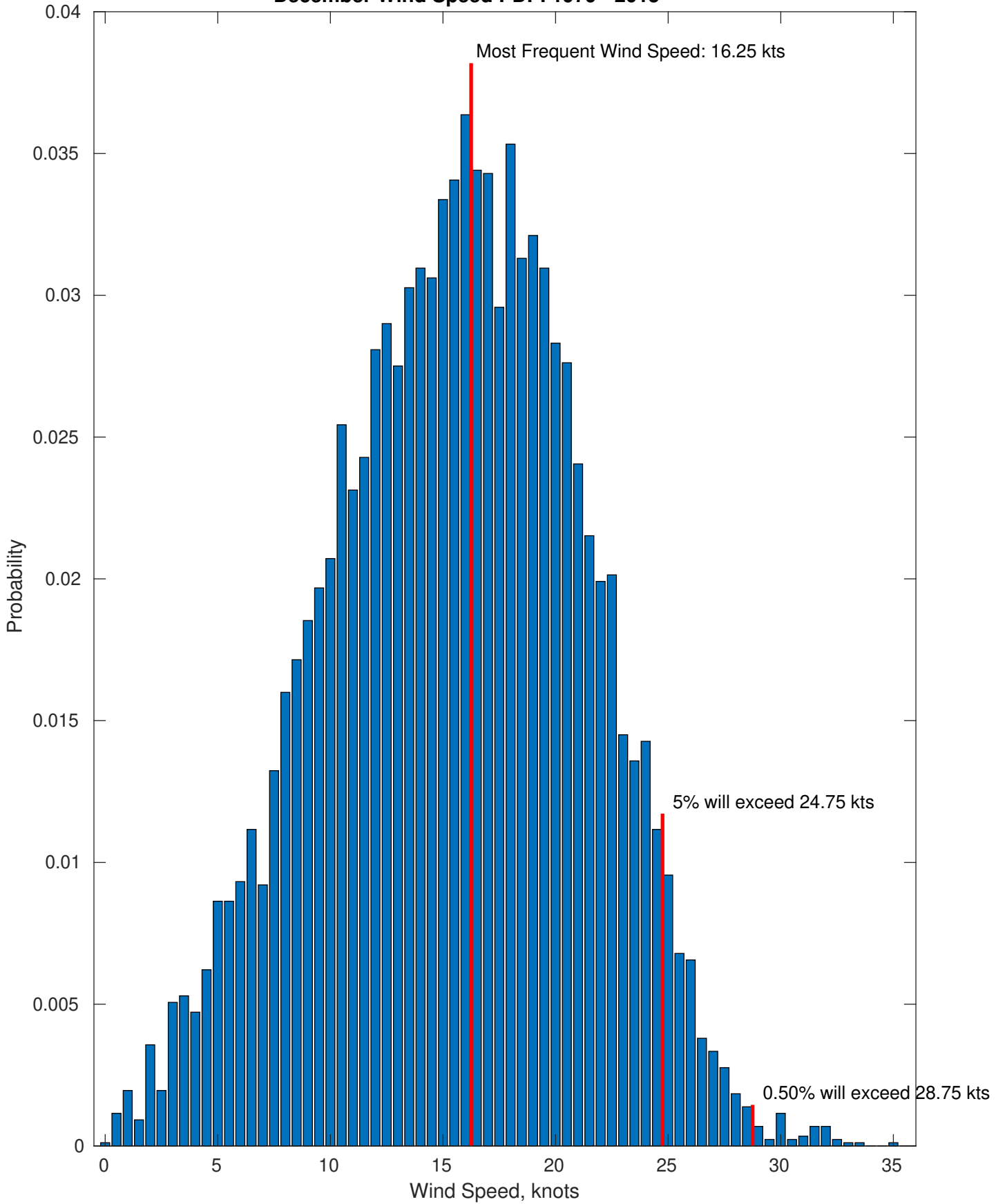
### Wind-Sea: 13.97%



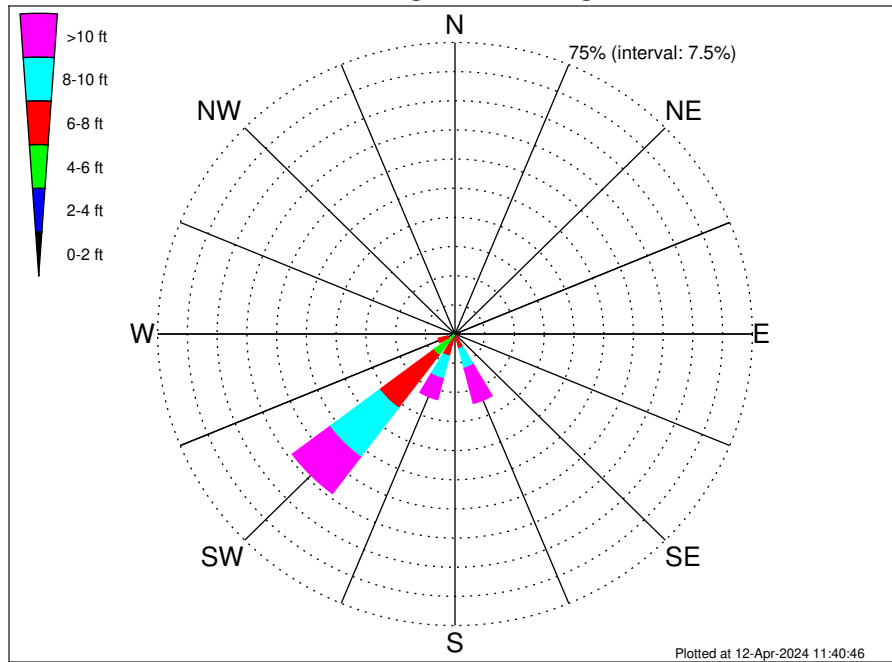
### Swell: 86.03%



### December Wind Speed PDF: 1979 - 2015



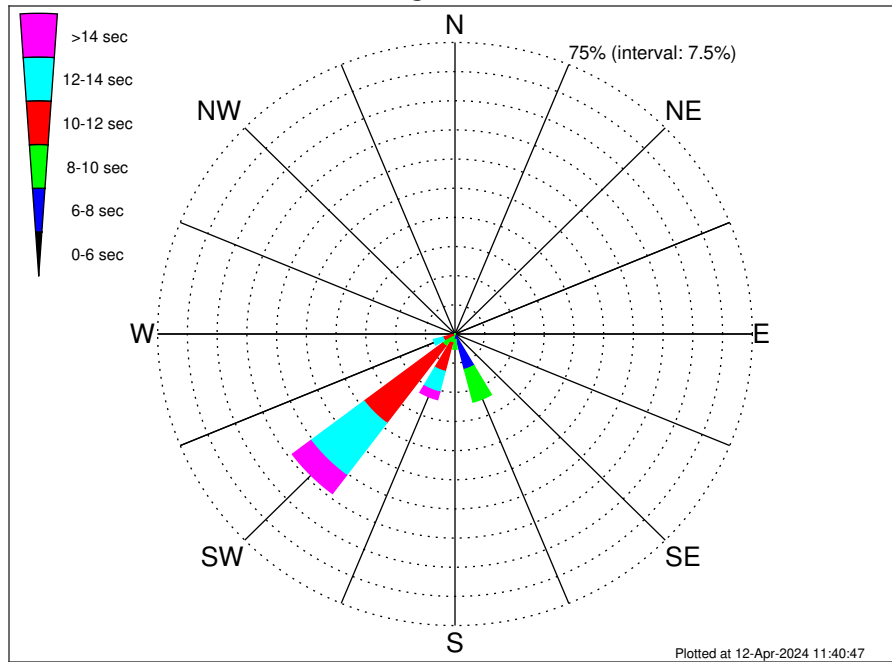
**RPS Venus Well - Namibia 29316 Climatological WaveHeight Rose for December: 1979 - 2015**



**Joint Frequency Distribution Table**

	N	NNE	NE	ENE	E	ESE	SE	SSE	S	SSW	SW	WSW	W	WNW	NW	NNW	Total
calm	•	•	•	•	•	•	•	•	•	•	•	•	•	•	•	•	•
1 - 2 ft	•	•	•	•	•	•	•	•	•	•	•	•	•	•	•	•	•
2 - 4 ft	•	•	•	•	•	•	•	0.01	0.02	0.12	0.45	0.21	0.02	•	0.05	•	0.87
4 - 6 ft	•	•	•	•	•	•	0.01	0.63	0.52	1.22	6.38	1.78	0.12	0.16	0.38	•	11.20
6 - 8 ft	•	•	•	•	•	•	0.09	3.26	1.66	4.55	17.00	2.42	0.15	0.15	0.09	•	29.36
8 - 10 ft	•	•	•	•	•	•	0.15	5.22	1.32	6.02	15.81	1.66	•	0.02	0.08	•	30.29
10 - 12 ft	•	•	•	•	•	•	0.08	5.79	0.60	3.54	8.03	0.39	•	•	•	•	18.44
12 - 14 ft	•	•	•	•	•	•	0.06	2.29	0.31	1.31	2.81	0.03	•	•	•	•	6.81
14 - 16 ft	•	•	•	•	•	•	0.01	0.97	0.15	0.60	0.78	0.02	•	•	•	•	2.53
16 - 18 ft	•	•	•	•	•	•	•	0.22	0.02	0.09	0.12	•	•	•	•	•	0.45
> 18 ft	•	•	•	•	•	•	•	0.05	•	•	•	•	•	•	•	•	0.05
Total	•	•	•	•	•	•	0.40	18.44	4.60	17.45	51.38	6.51	0.29	0.33	0.60	•	100.00

**RPS Venus Well - Namibia 29316 Climatological WavePeriod Rose for December: 1979 - 2015**

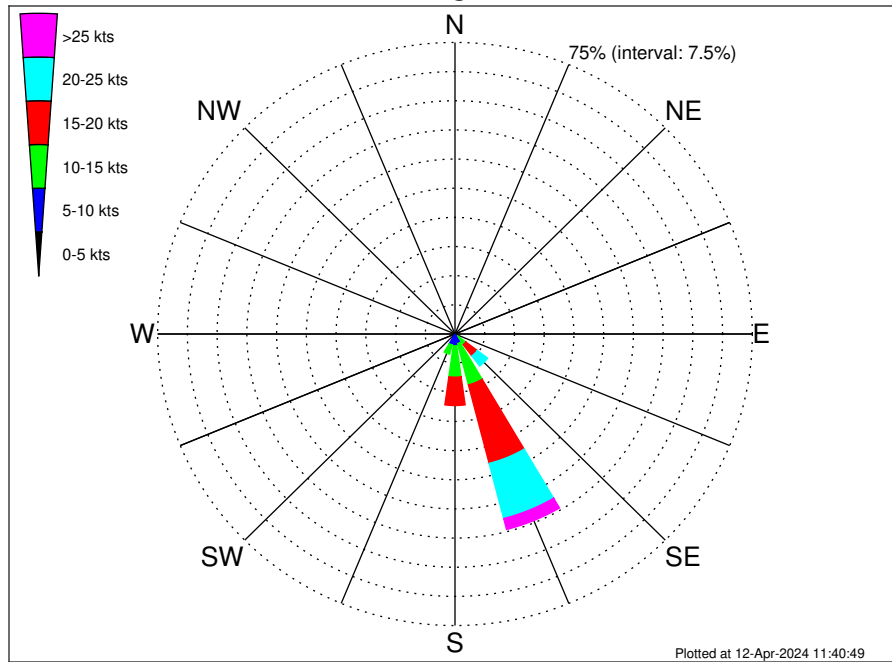


**Joint Frequency Distribution Table**

	N	NNE	NE	ENE	E	ESE	SE	SSE	S	SSW	SW	WSW	W	WNW	NW	NNW	Total
calm	•	•	•	•	•	•	•	•	•	•	•	•	•	•	•	•	•
1 - 2 sec	•	•	•	•	•	•	•	•	•	•	•	•	•	•	•	•	•
2 - 4 sec	•	•	•	•	•	•	•	•	•	•	•	•	•	•	•	•	•
4 - 6 sec	•	•	•	•	•	•	0.06	0.60	0.08	•	•	•	•	0.01	0.01	•	0.76
6 - 8 sec	•	•	•	•	•	•	0.30	8.82	1.44	0.10	0.01	•	•	•	•	•	10.67
8 - 10 sec	•	•	•	•	•	•	0.05	8.68	2.41	2.29	3.88	0.51	•	•	•	•	17.80
10 - 12 sec	•	•	•	•	•	•	•	0.35	0.52	7.56	24.81	2.65	•	•	•	•	35.88
12 - 14 sec	•	•	•	•	•	•	•	•	0.12	5.49	16.83	2.47	0.07	0.03	0.06	•	25.07
14 - 16 sec	•	•	•	•	•	•	•	•	0.05	1.74	4.93	0.68	0.18	0.18	0.26	•	8.02
18 - 20 sec	•	•	•	•	•	•	•	•	•	0.24	0.83	0.21	0.03	0.09	0.22	•	1.62
22 - 24 sec	•	•	•	•	•	•	•	•	•	0.02	0.09	•	•	0.01	0.05	•	0.17
Total	•	•	•	•	•	•	0.40	18.44	4.60	17.45	51.38	6.51	0.29	0.33	0.60	•	100.00



**RPS Venus Well - Namibia 29316 Climatological Wind Rose for December: 1979 - 2015**



**Joint Frequency Distribution Table**

	N	NNE	NE	ENE	E	ESE	SE	SSE	S	SSW	SW	WSW	W	WNW	NW	NNW	Total
calm	0.01	•	•	0.01	•	•	0.02	•	0.01	•	•	•	0.01	0.01	0.02	0.02	0.13
0 - 5 kts	0.12	0.10	0.15	0.06	0.08	0.10	0.18	0.38	0.33	0.41	0.37	0.29	0.14	0.05	0.12	0.09	2.97
5 - 10 kts	0.10	0.10	0.02	0.03	0.07	0.17	0.66	2.18	2.69	2.47	1.68	1.17	0.69	0.40	0.36	0.35	13.15
10 - 15 kts	0.02	0.03	0.01	•	0.01	0.07	2.57	10.96	8.07	2.49	1.14	0.74	0.54	0.24	0.09	0.02	27.00
15 - 20 kts	0.01	0.05	•	•	•	0.02	3.64	20.87	7.30	1.00	0.06	0.02	0.07	0.08	0.06	0.01	33.18
20 - 25 kts	•	•	•	•	•	0.01	3.26	14.65	1.48	0.09	0.01	•	•	•	•	•	19.51
25 - 30 kts	•	•	•	•	•	•	0.94	2.70	0.05	•	•	•	•	•	•	•	3.69
30 - 35 kts	•	•	•	•	•	•	0.15	0.21	•	•	•	•	•	•	•	•	0.36
35 - 40 kts	•	•	•	•	•	•	0.01	•	•	•	•	•	•	•	•	•	0.01
40 - 45 kts	•	•	•	•	•	•	•	•	•	•	•	•	•	•	•	•	•
45 - 50 kts	•	•	•	•	•	•	•	•	•	•	•	•	•	•	•	•	•
Total	0.26	0.29	0.18	0.10	0.16	0.38	11.43	51.94	19.93	6.47	3.26	2.22	1.45	0.78	0.64	0.49	100.00