

RPS Venus Well - Namibia 29316 - February

Latitude: 29.48 S Longitude: 13.26 E

Weather Days

Wave Height > 6.0 ft Mean: 21.2 days Range: 18.9 - 23.5 days p50:27.5 days p75:26 days p90:24.5 days

Wave Height > 7.0 ft Mean: 16.4 days Range: 13.6 - 19.2 days p50:24 days p75:22 days p90:20.5 days

Wave Height > 8.0 ft Mean: 11.7 days Range: 8.5 - 14.9 days p50:19 days p75:17 days p90:15 days

Wind Speed > 10.0 knots Mean: 25.4 days Range: 23.0 - 27.8 days p50:25.5 days p75:24.5 days p90:22.5 days

Wind Speed > 15.0 knots Mean: 17.2 days Range: 14.0 - 20.5 days p50:18 days p75:15.5 days p90:13.5 days

Wind Speed > 20.0 knots Mean: 7.2 days Range: 4.8 - 9.6 days p50:7.5 days p75:6 days p90:4.5 days

Working Window

Wave Height < 6.0 ft
A 1 day or longer window will statistically occur 1.1 times per month
A 2 day or longer window will statistically occur 0.4 times per month
A 3 day or longer window will statistically occur 0.1 times per month

Wave Height < 7.0 ft
A 1 day or longer window will statistically occur 2.2 times per month
A 2 day or longer window will statistically occur 1.0 times per month
A 3 day or longer window will statistically occur 0.4 times per month

Wave Height < 8.0 ft
A 1 day or longer window will statistically occur 3.5 times per month
A 2 day or longer window will statistically occur 1.8 times per month
A 3 day or longer window will statistically occur 0.9 times per month

Waves

Mean Height: 8 - 10 ft

The wave heights will occasionally reach 16 - 18 ft, but rarely higher.

Mean Period: 10 - 12 sec

The wave periods will occasionally reach 18 - 20 sec, but rarely longer.

Principle Direction, from: SW

WindSea/Swell: 12% / 88%

Winds

Mean Speed: 15 - 20 kts

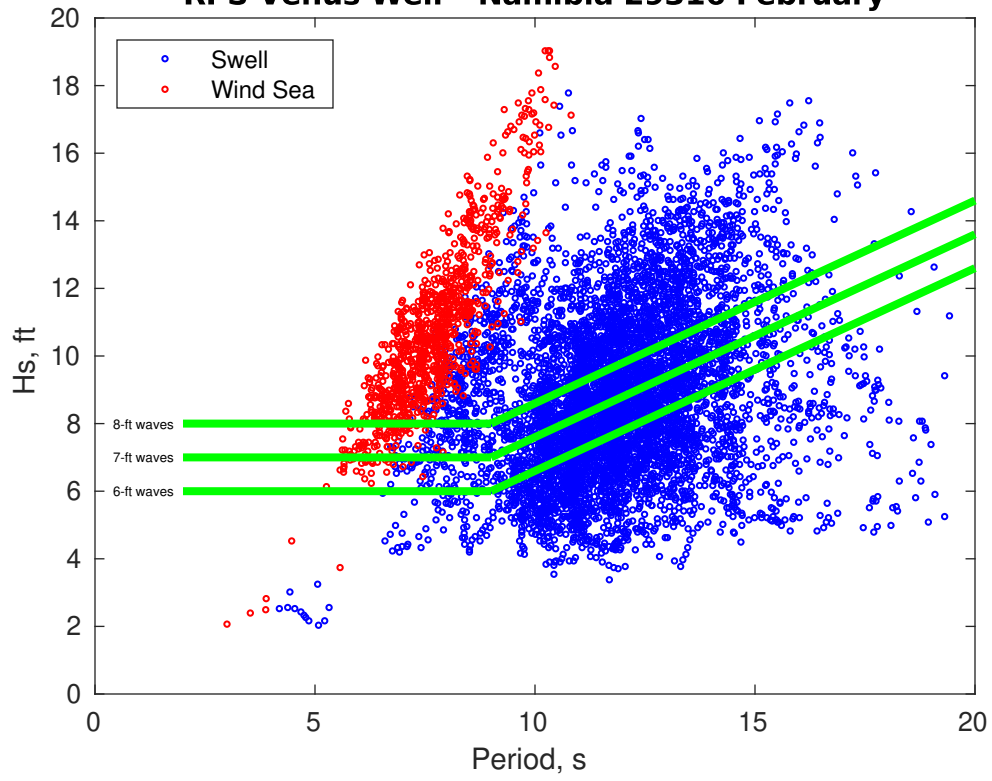
The winds will occasionally reach 25 - 30 kts, but rarely greater.

Principle Direction, from: SSE

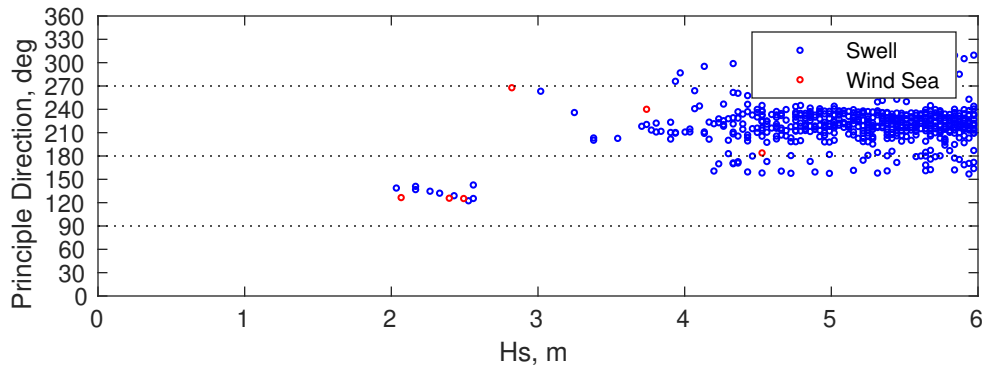
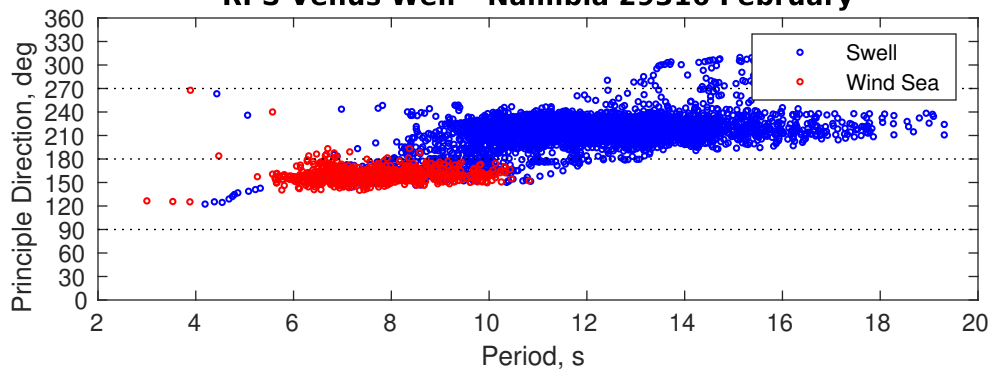
Severe Storms

Severe storms with gale force winds and extreme waves are not expected during this month.

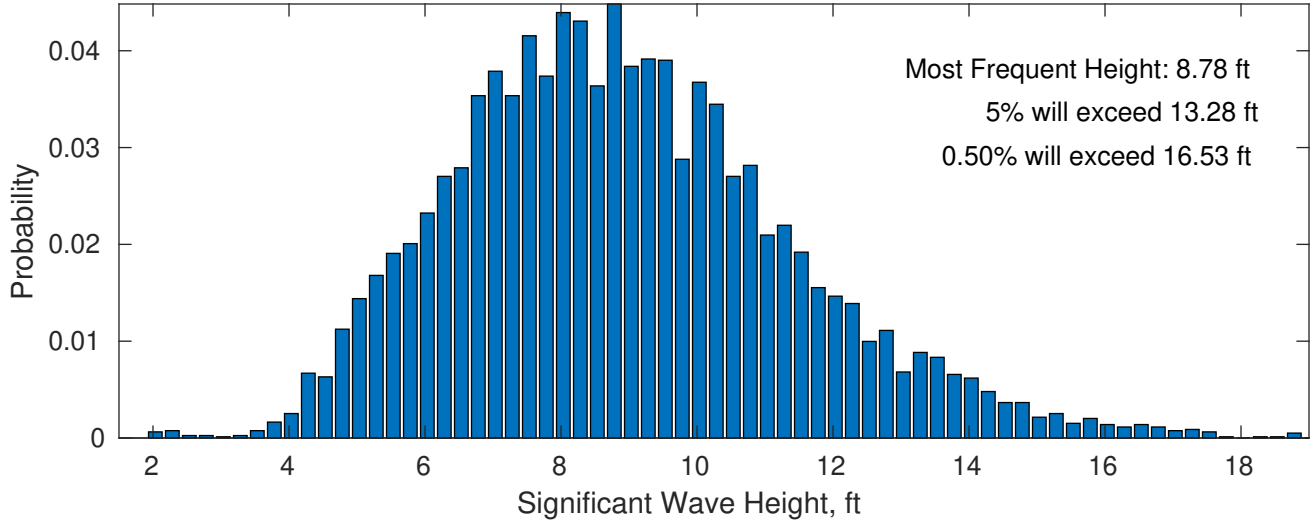
RPS Venus Well - Namibia 29316 February



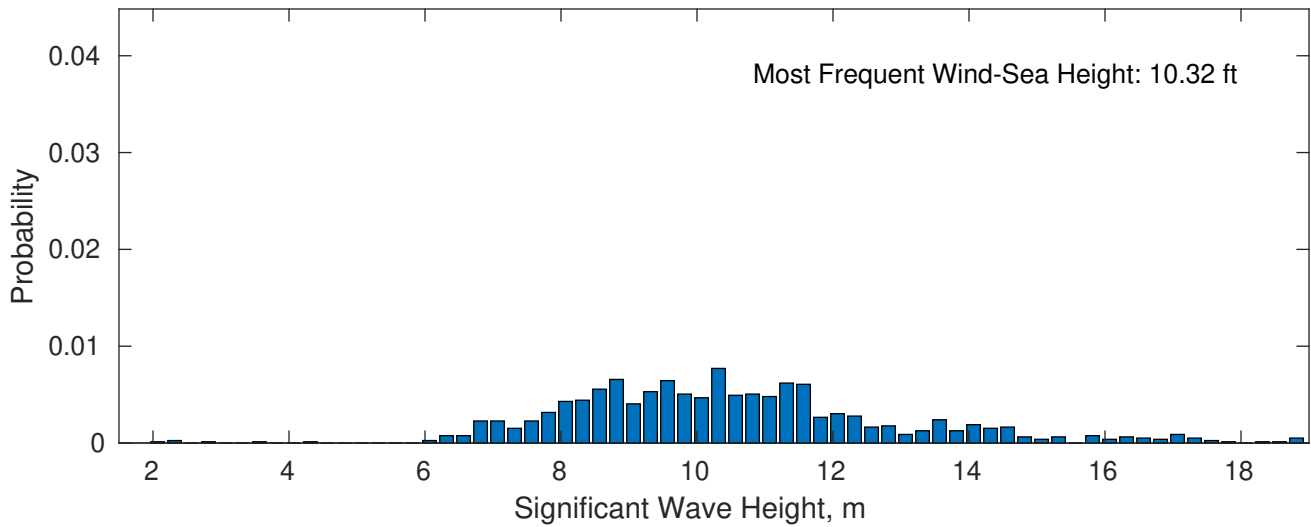
RPS Venus Well - Namibia 29316 February



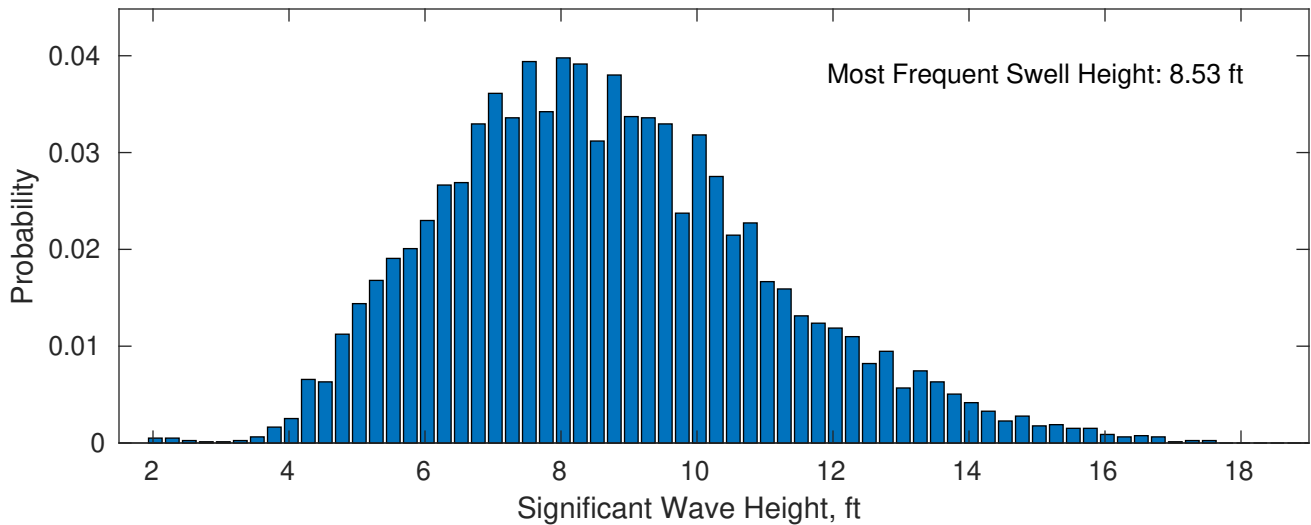
February Wave Height PDF: 1979 - 2015



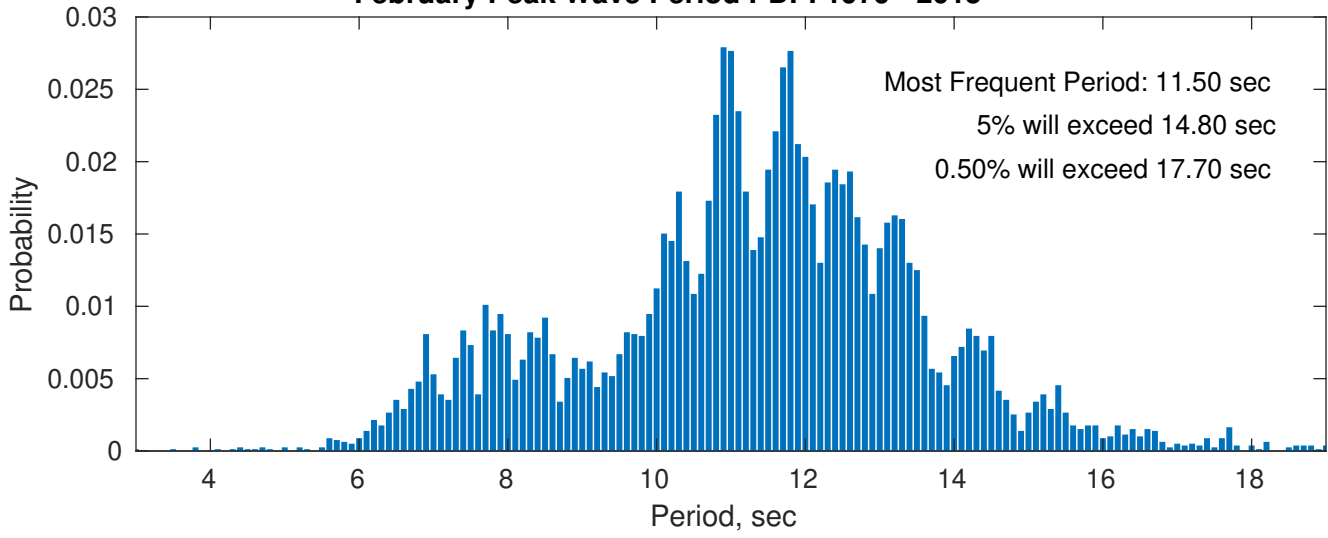
Wind-Sea: 12.46%



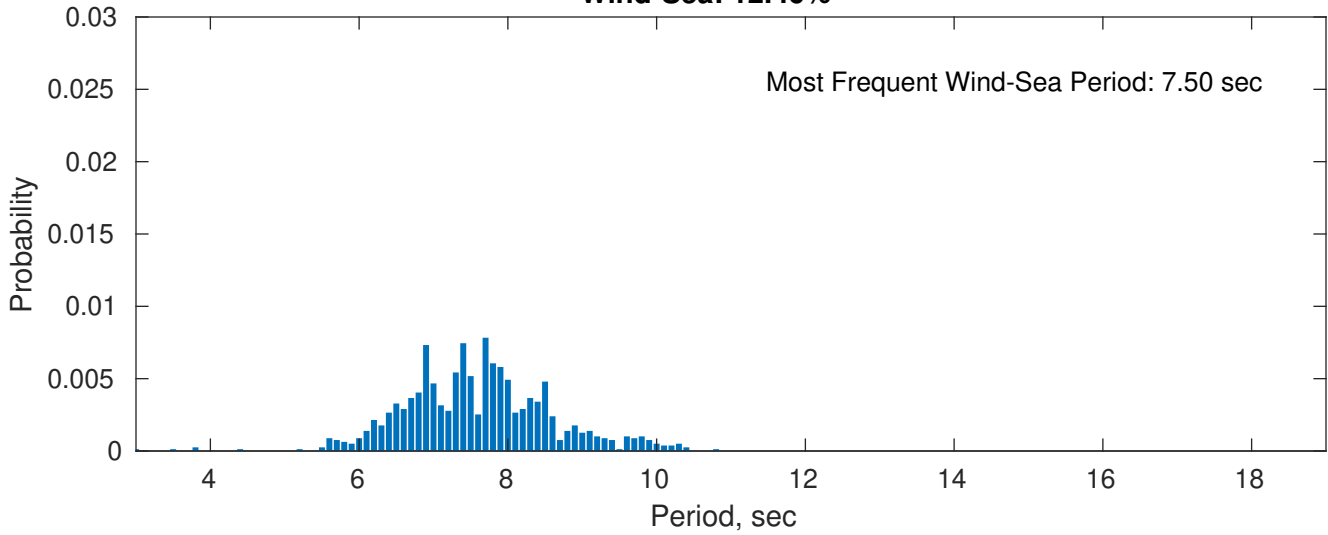
Swell: 87.54%



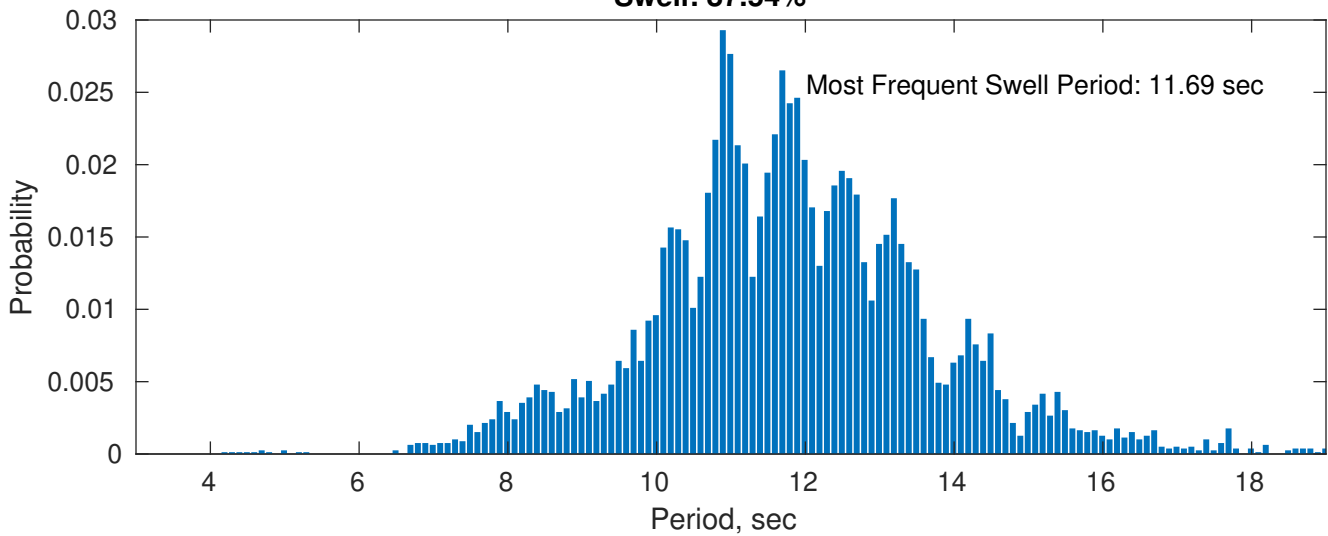
February Peak Wave Period PDF: 1979 - 2015



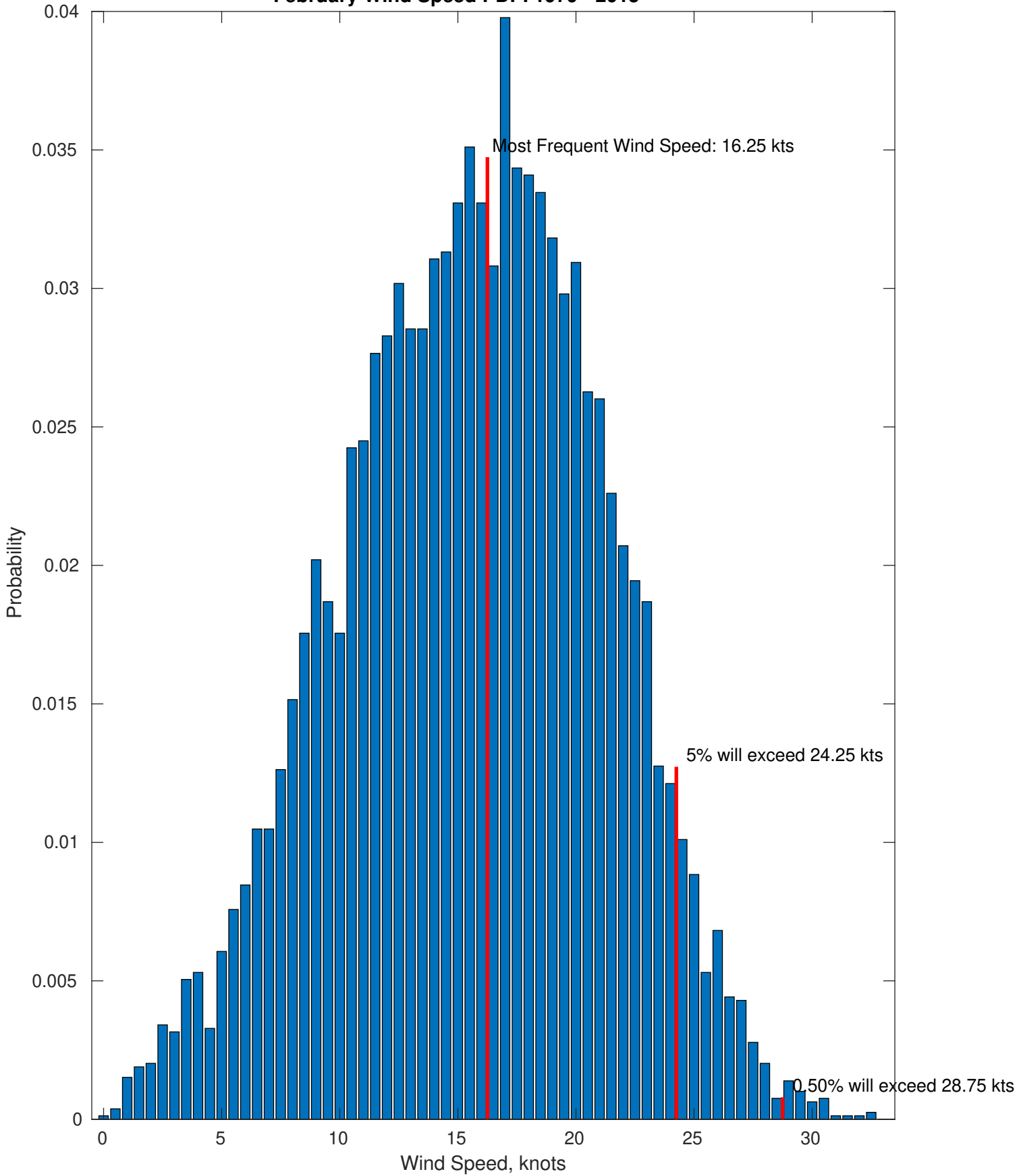
Wind-Sea: 12.46%



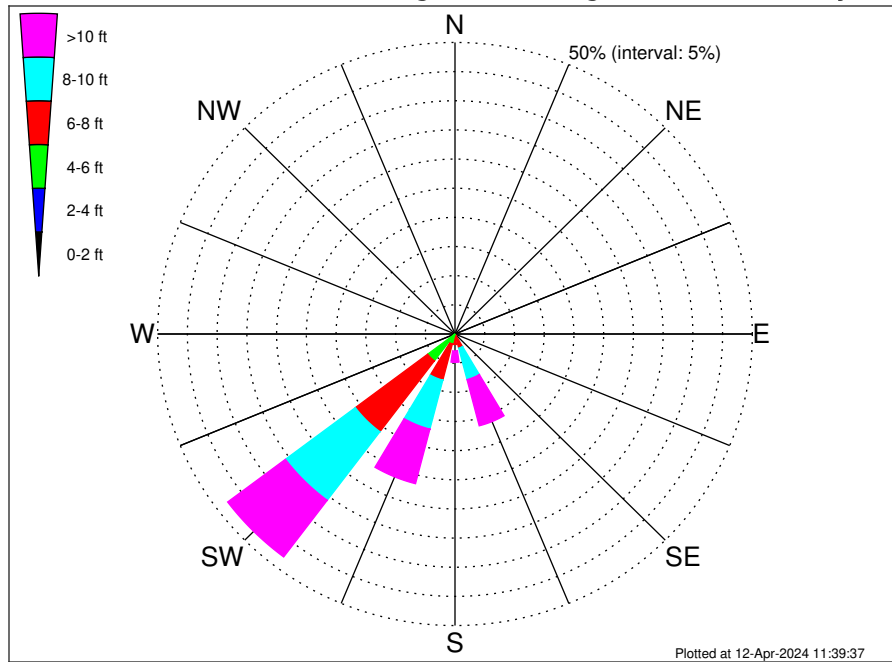
Swell: 87.54%



February Wind Speed PDF: 1979 - 2015



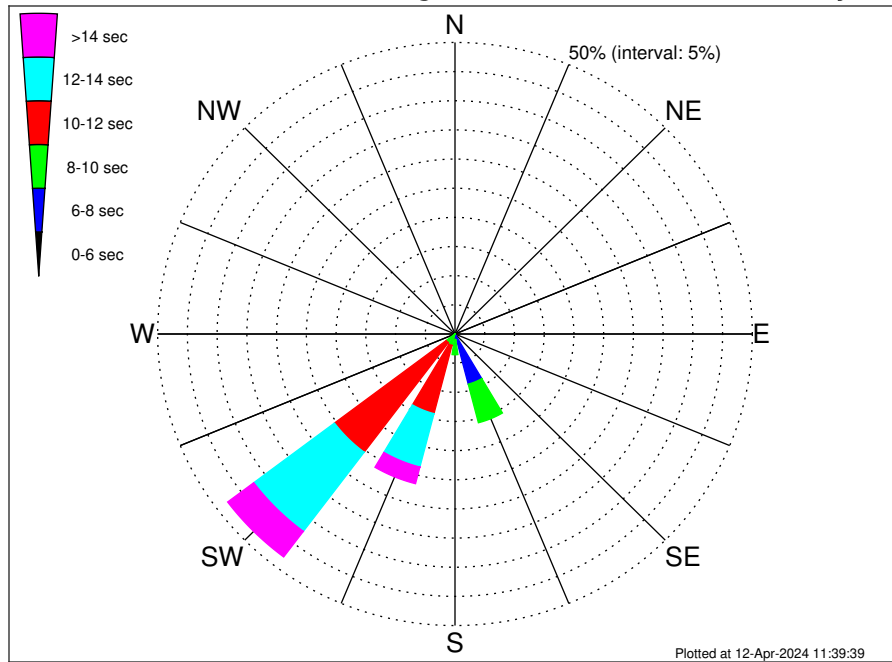
RPS Venus Well - Namibia 29316 Climatological WaveHeight Rose for February: 1979 - 2015



Joint Frequency Distribution Table

	N	NNE	NE	ENE	E	ESE	SE	SSE	S	SSW	SW	WSW	W	WNW	NW	NNW	Total
calm	•	•	•	•	•	•	•	•	•	•	•	•	•	•	•	•	•
1 - 2 ft	•	•	•	•	•	•	•	•	•	•	•	•	•	•	•	•	•
2 - 4 ft	•	•	•	•	•	0.01	0.15	•	•	0.15	0.08	0.01	0.04	0.01	•	•	0.45
4 - 6 ft	•	•	•	•	•	•	•	0.21	0.42	1.60	5.68	0.71	0.18	0.09	0.43	•	9.32
6 - 8 ft	•	•	•	•	•	•	0.01	2.29	1.39	6.41	15.23	0.61	0.19	0.20	0.08	•	26.40
8 - 10 ft	•	•	•	•	•	•	0.18	5.57	1.11	8.68	14.72	0.87	0.09	0.06	0.11	•	31.39
10 - 12 ft	•	•	•	•	•	•	0.10	5.04	1.43	5.87	8.06	0.19	0.03	•	•	•	20.71
12 - 14 ft	•	•	•	•	•	•	0.03	1.86	0.39	2.82	2.94	0.11	•	•	•	•	8.14
14 - 16 ft	•	•	•	•	•	•	•	0.77	0.10	0.82	1.01	•	•	•	•	•	2.70
16 - 18 ft	•	•	•	•	•	•	•	0.45	0.03	0.16	0.15	•	•	•	•	•	0.80
> 18 ft	•	•	•	•	•	•	•	0.08	•	•	•	•	•	•	•	•	0.08
Total	•	•	•	•	•	0.01	0.47	16.26	4.86	26.52	47.87	2.50	0.52	0.37	0.62	•	100.00

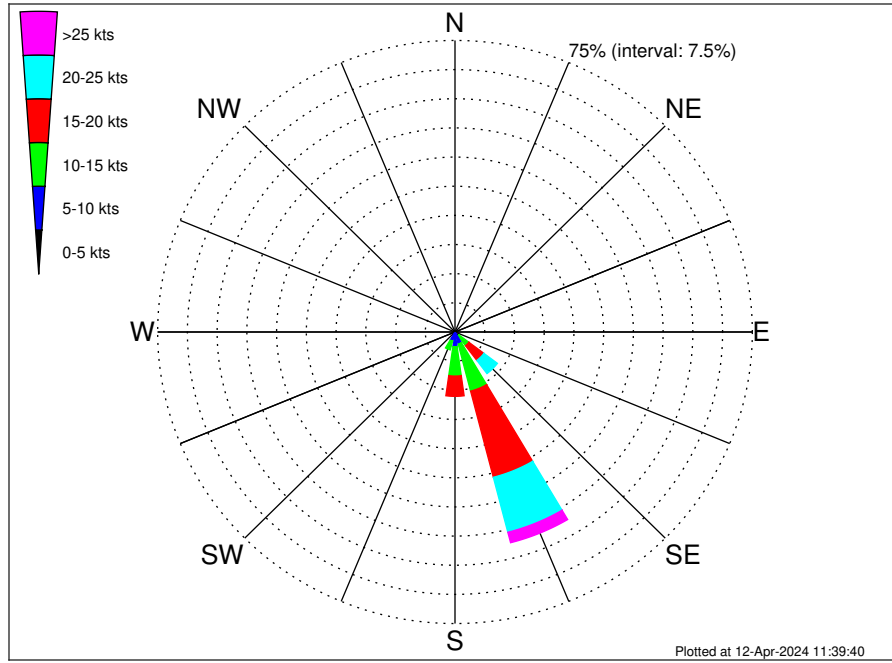
RPS Venus Well - Namibia 29316 Climatological WavePeriod Rose for February: 1979 - 2015



Joint Frequency Distribution Table

	N	NNE	NE	ENE	E	ESE	SE	SSE	S	SSW	SW	WSW	W	WNW	NW	NNW	Total
calm	•	•	•	•	•	•	•	•	•	•	•	•	•	•	•	•	•
1 - 2 sec	•	•	•	•	•	•	•	•	•	•	•	•	•	•	•	•	•
2 - 4 sec	•	•	•	•	•	•	0.04	•	•	•	•	•	0.01	•	•	•	0.05
4 - 6 sec	•	•	•	•	•	0.01	0.14	0.28	0.01	•	0.01	0.01	0.01	•	•	•	0.48
6 - 8 sec	•	•	•	•	•	•	0.29	8.60	1.01	0.04	•	0.04	•	•	•	•	9.98
8 - 10 sec	•	•	•	•	•	•	•	6.84	2.54	1.98	1.84	0.18	•	•	•	•	13.39
10 - 12 sec	•	•	•	•	•	•	•	0.54	1.00	12.08	23.53	0.76	0.03	•	•	•	37.93
12 - 14 sec	•	•	•	•	•	•	•	•	0.29	9.46	17.00	0.82	0.15	0.11	0.01	•	27.84
14 - 16 sec	•	•	•	•	•	•	•	•	0.01	2.48	4.58	0.51	0.29	0.16	0.30	•	8.33
18 - 20 sec	•	•	•	•	•	•	•	•	•	0.45	0.77	0.15	0.01	0.05	0.21	•	1.65
22 - 24 sec	•	•	•	•	•	•	•	•	•	0.03	0.14	0.04	0.01	0.04	0.09	•	0.34
Total	•	•	•	•	•	0.01	0.47	16.26	4.86	26.52	47.87	2.50	0.52	0.37	0.62	•	100.00

RPS Venus Well - Namibia 29316 Climatological Wind Rose for February: 1979 - 2015



Joint Frequency Distribution Table

	N	NNE	NE	ENE	E	ESE	SE	SSE	S	SSW	SW	WSW	W	WNW	NW	NNW	Total
calm	•	•	•	•	•	•	•	0.01	0.01	•	0.01	•	•	0.01	•	•	0.05
0 - 5 kts	0.08	0.04	0.04	0.06	0.04	0.14	0.14	0.30	0.29	0.42	0.35	0.30	0.23	0.05	0.05	0.04	2.56
5 - 10 kts	0.05	0.03	0.03	0.05	0.05	0.28	1.07	2.88	3.47	1.98	1.06	0.72	0.47	0.30	0.20	0.09	12.73
10 - 15 kts	•	•	•	0.01	0.05	0.15	3.18	12.51	7.56	2.35	0.62	0.21	0.13	0.19	0.16	0.05	27.19
15 - 20 kts	•	•	•	•	•	0.10	4.75	22.89	5.22	0.33	0.04	0.04	0.01	0.06	0.10	•	33.54
20 - 25 kts	•	•	•	•	•	0.03	4.26	14.61	1.00	0.04	•	0.01	•	0.01	0.01	•	19.96
25 - 30 kts	•	•	•	•	•	•	1.11	2.61	0.04	•	•	•	•	•	•	•	3.76
30 - 35 kts	•	•	•	•	•	•	0.04	0.16	•	•	•	•	•	•	•	•	0.20
35 - 40 kts	•	•	•	•	•	•	•	•	•	•	•	•	•	•	•	•	•
40 - 45 kts	•	•	•	•	•	•	•	•	•	•	•	•	•	•	•	•	•
45 - 50 kts	•	•	•	•	•	•	•	•	•	•	•	•	•	•	•	•	•
Total	0.13	0.06	0.06	0.13	0.14	0.69	14.55	55.99	17.59	5.11	2.08	1.29	0.83	0.63	0.53	0.18	100.00