

RPS Venus Well - Namibia 29316 - January

Latitude: 29.48 S Longitude: 13.26 E

Weather Days

Wave Height > 6.0 ft Mean: 21.7 days Range: 19.4 - 24.0 days p50:28 days p75:26.5 days p90:24.5 days

Wave Height > 7.0 ft Mean: 16.4 days Range: 13.4 - 19.4 days p50:24 days p75:21.5 days p90:19 days

Wave Height > 8.0 ft Mean: 11.6 days Range: 8.6 - 14.6 days p50:18.5 days p75:15.5 days p90:14.5 days

Wind Speed > 10.0 knots Mean: 26.4 days Range: 24.2 - 28.5 days p50:26.5 days p75:25.5 days p90:23.5 days

Wind Speed > 15.0 knots Mean: 18.8 days Range: 15.3 - 22.2 days p50:19 days p75:17 days p90:15 days

Wind Speed > 20.0 knots Mean: 8.1 days Range: 5.6 - 10.6 days p50:8 days p75:6 days p90:5.5 days

Working Window

Wave Height < 6.0 ft
A 1 day or longer window will statistically occur 1.1 times per month
A 2 day or longer window will statistically occur 0.3 times per month
A 3 day or longer window will statistically occur 0.1 times per month

Wave Height < 7.0 ft
A 1 day or longer window will statistically occur 2.4 times per month
A 2 day or longer window will statistically occur 1.1 times per month
A 3 day or longer window will statistically occur 0.5 times per month

Wave Height < 8.0 ft
A 1 day or longer window will statistically occur 3.7 times per month
A 2 day or longer window will statistically occur 2.3 times per month
A 3 day or longer window will statistically occur 1.3 times per month

Waves

Mean Height: 8 - 10 ft

The wave heights will occasionally reach 14 - 16 ft, but rarely higher.

Mean Period: 10 - 12 sec

The wave periods will occasionally reach 18 - 20 sec, but rarely longer.

Principle Direction, from: SW

WindSea/Swell: 16% / 84%

Winds

Mean Speed: 15 - 20 kts

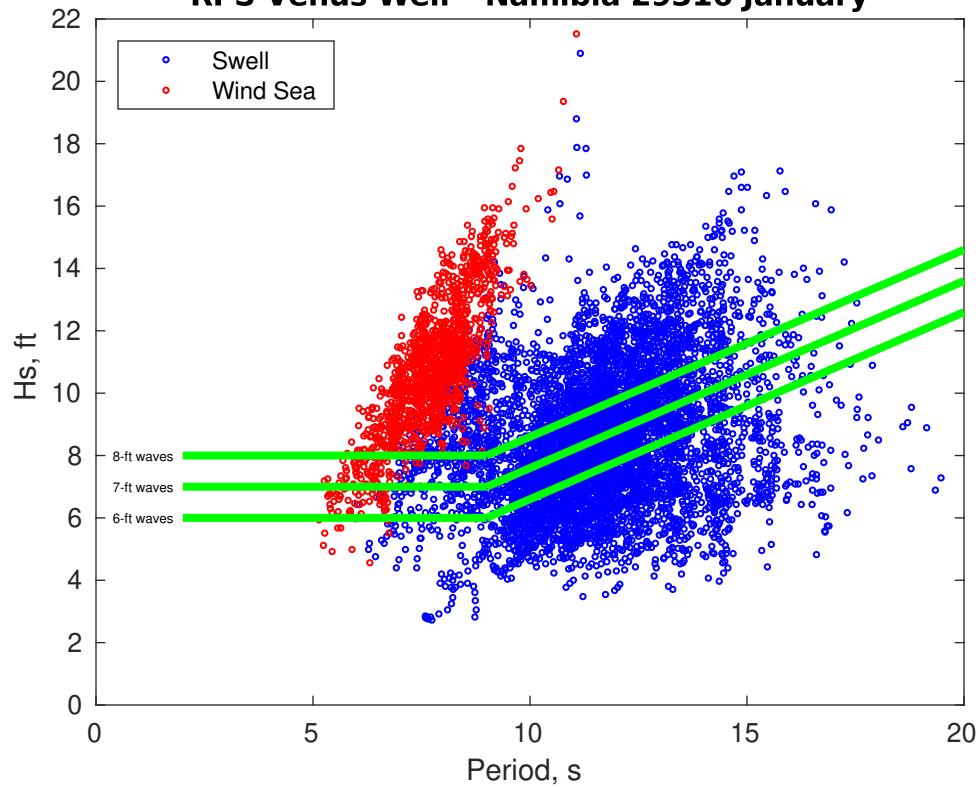
The winds will occasionally reach 25 - 30 kts, but rarely greater.

Principle Direction, from: SSE

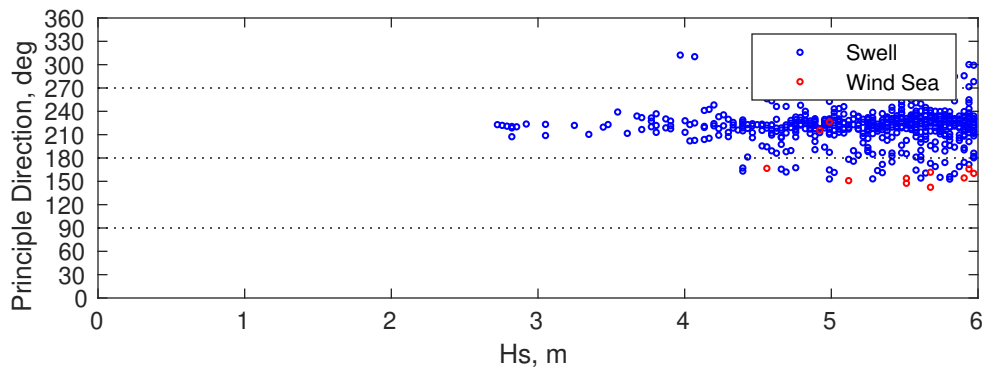
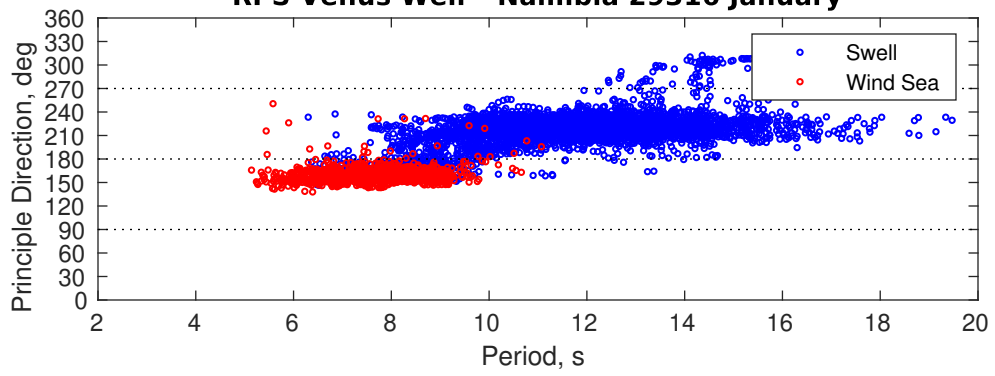
Severe Storms

Severe storms with gale force winds and extreme waves are not expected during this month.

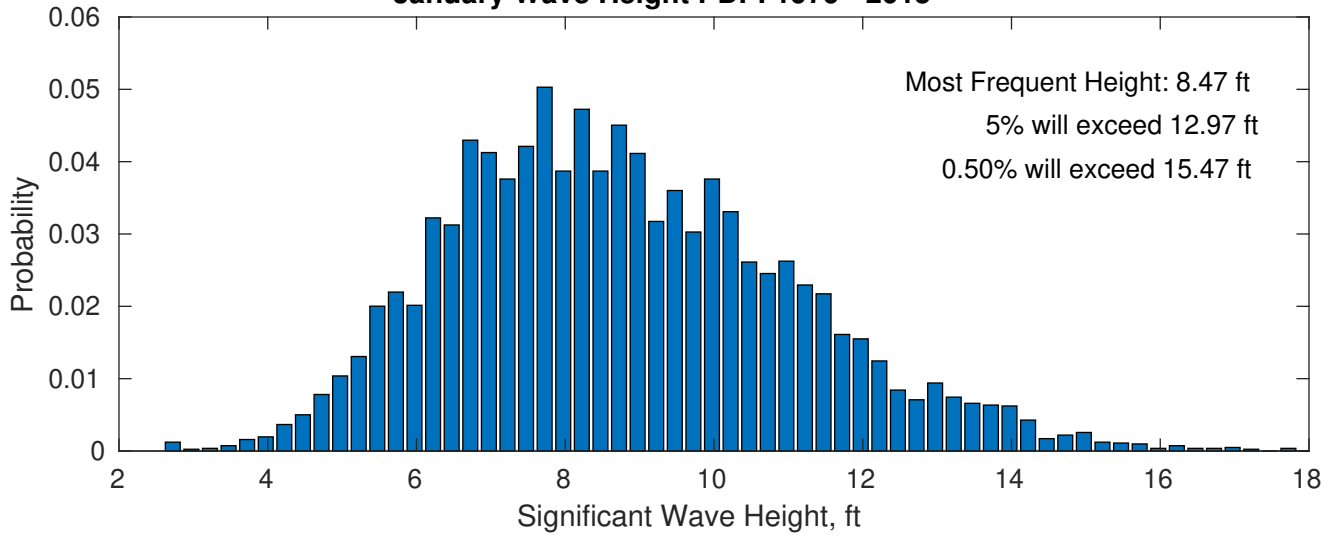
RPS Venus Well - Namibia 29316 January



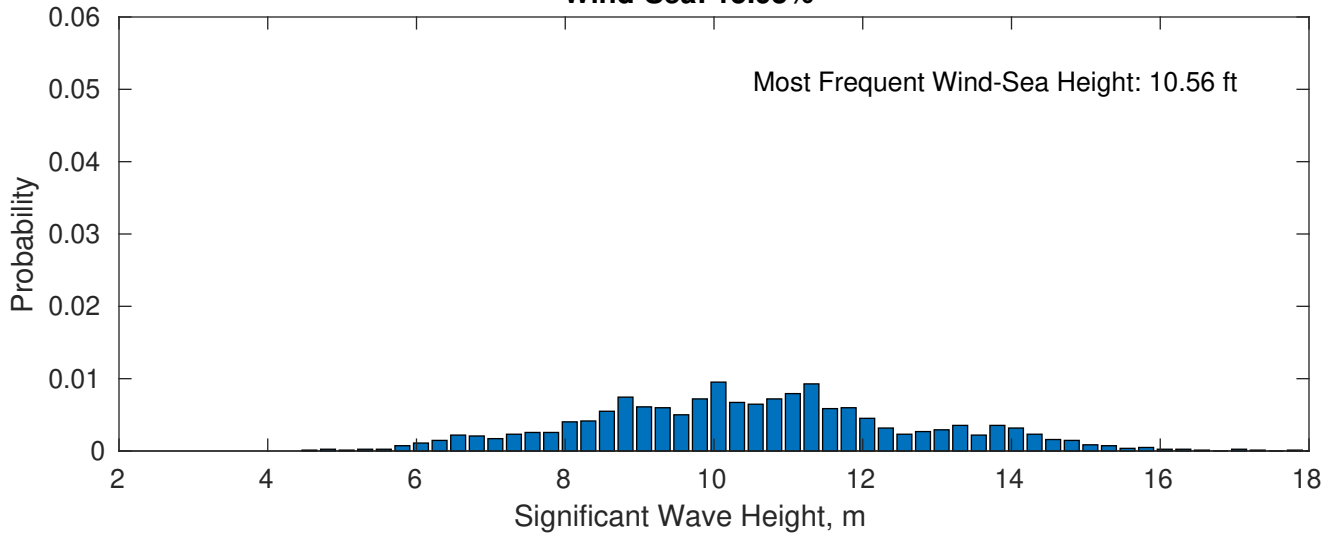
RPS Venus Well - Namibia 29316 January



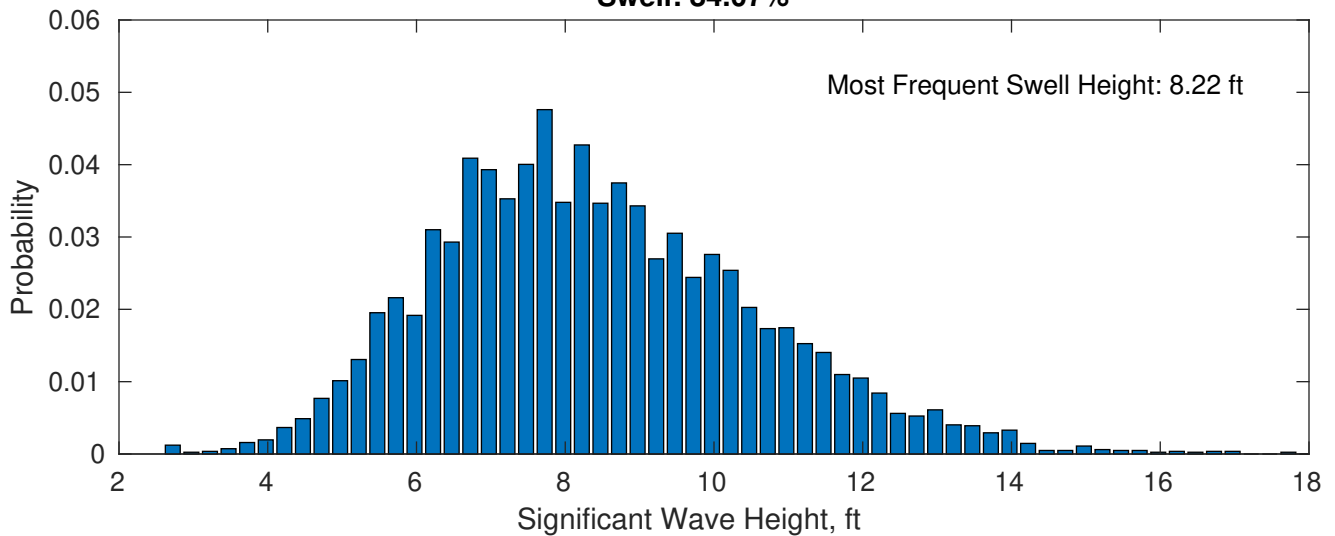
January Wave Height PDF: 1979 - 2015



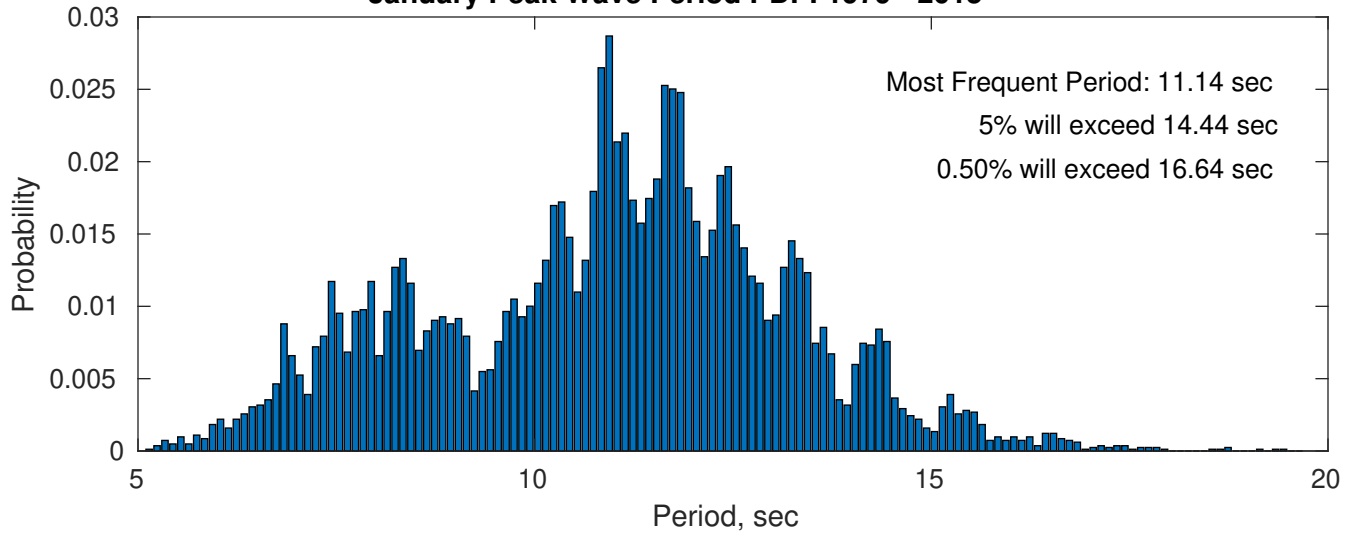
Wind-Sea: 15.93%



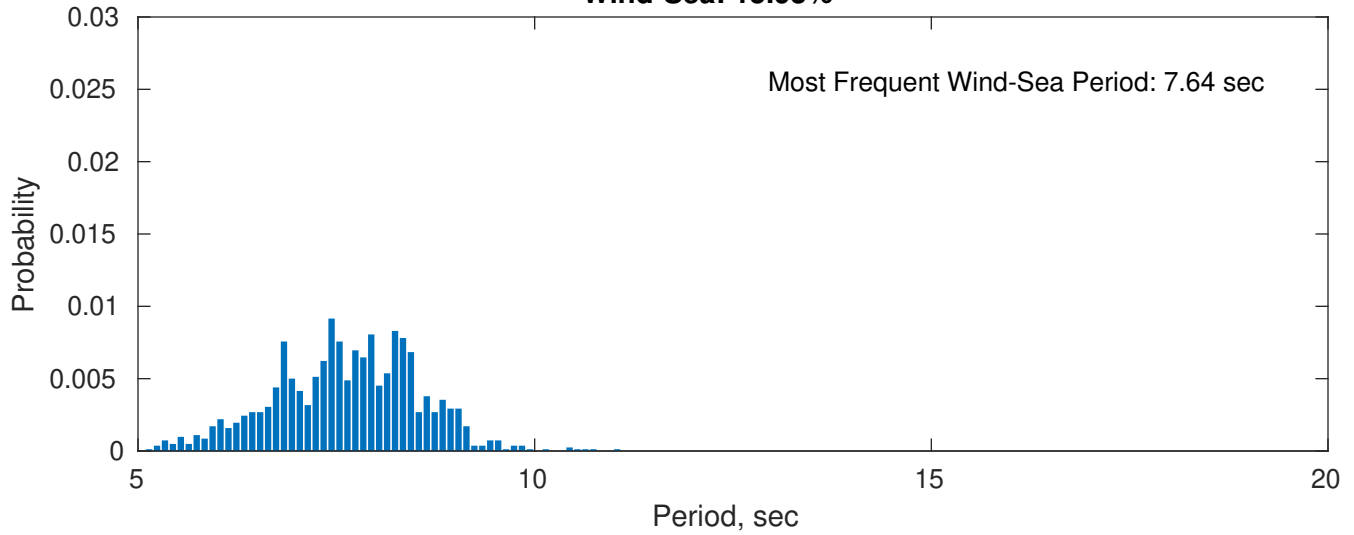
Swell: 84.07%



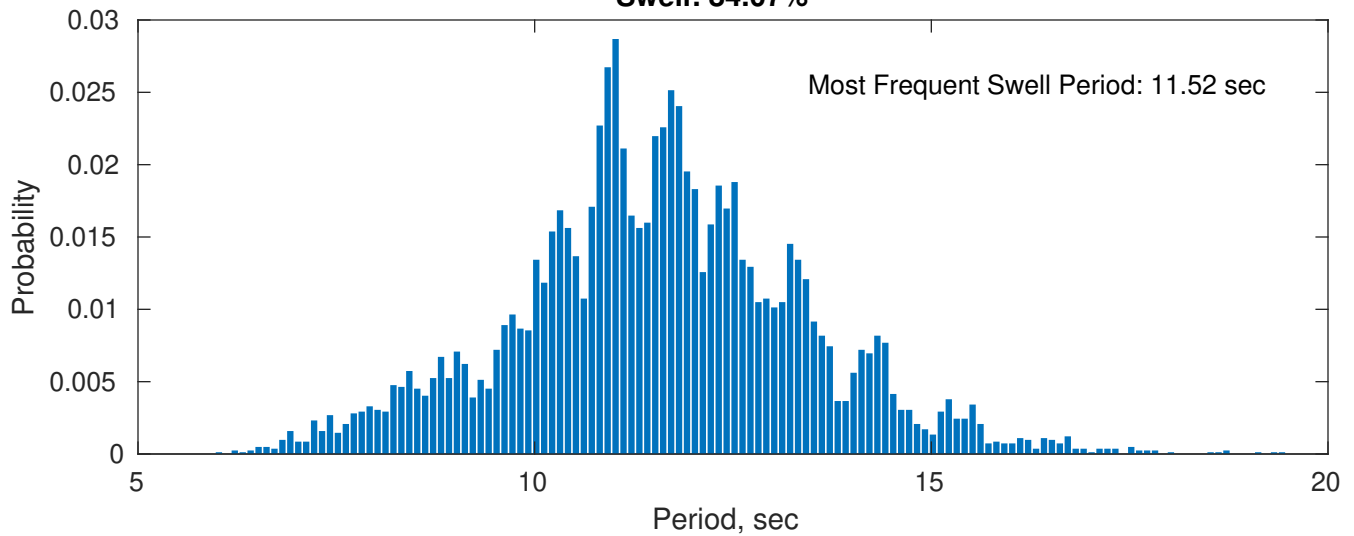
January Peak Wave Period PDF: 1979 - 2015



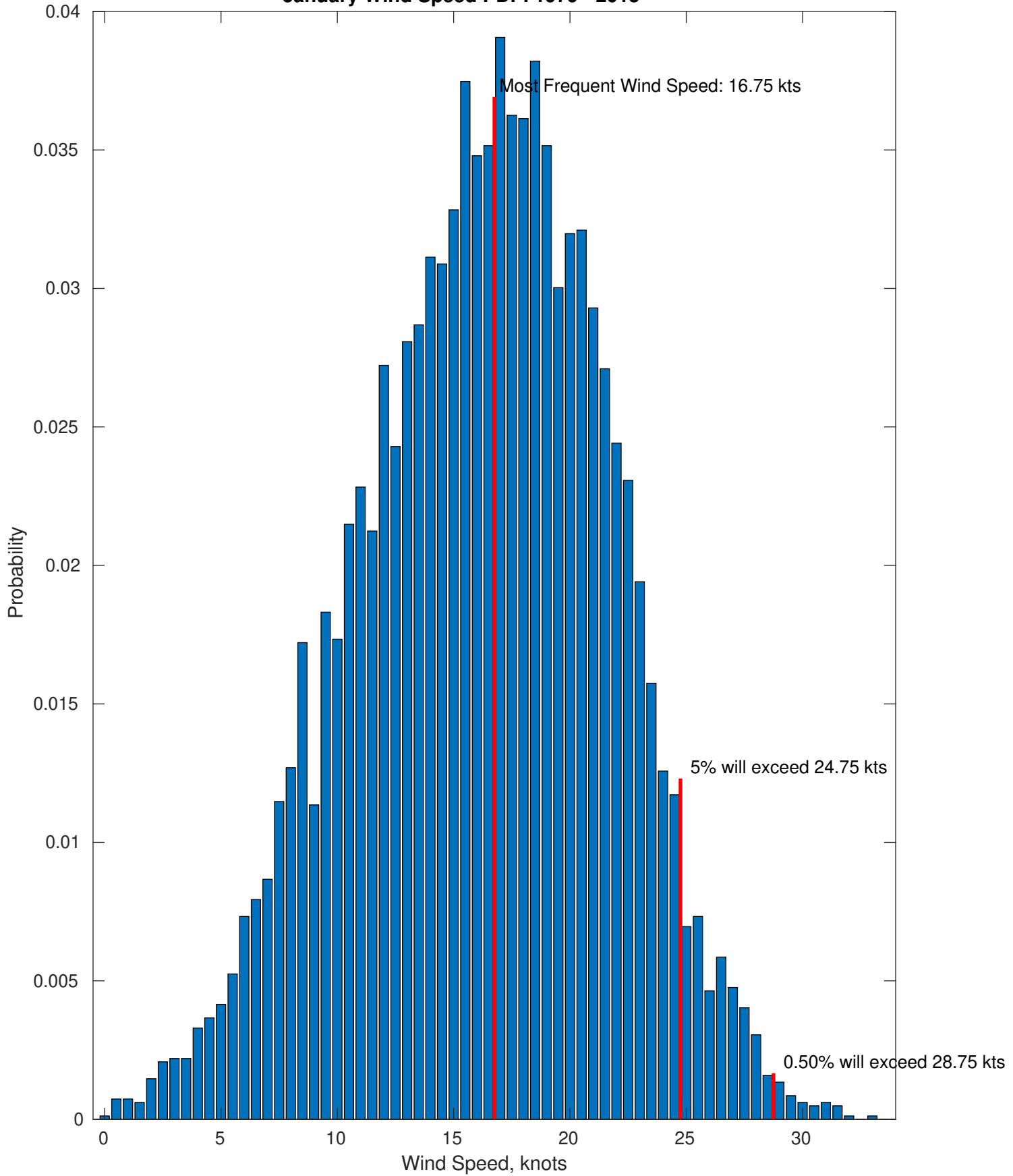
Wind-Sea: 15.93%



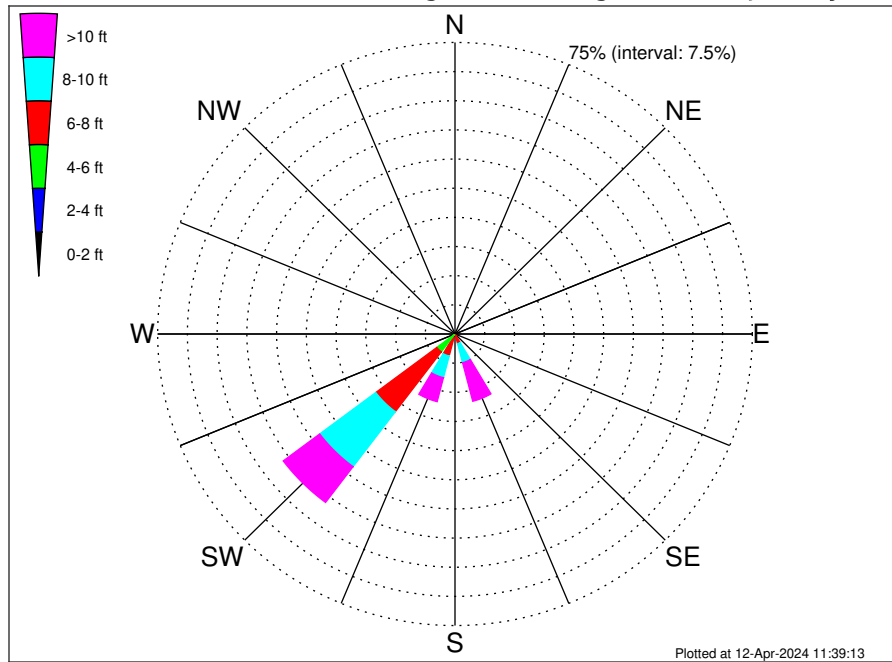
Swell: 84.07%



January Wind Speed PDF: 1979 - 2015



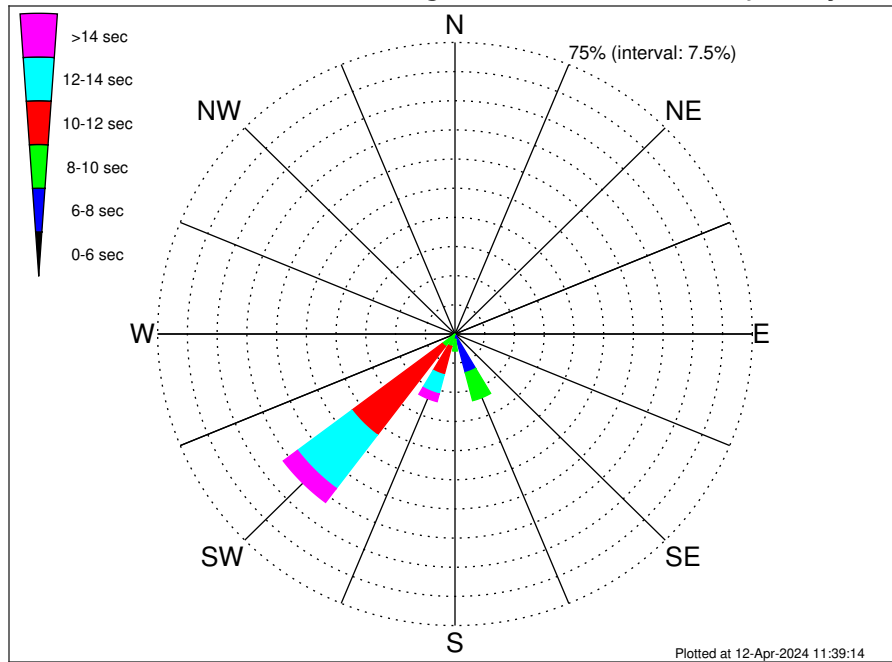
RPS Venus Well - Namibia 29316 Climatological WaveHeight Rose for January: 1979 - 2015



Joint Frequency Distribution Table

	N	NNE	NE	ENE	E	ESE	SE	SSE	S	SSW	SW	WSW	W	WNW	NW	NNW	Total
calm	•	•	•	•	•	•	•	•	•	•	•	•	•	•	•	•	•
1 - 2 ft	•	•	•	•	•	•	•	•	•	•	•	•	•	•	•	•	•
2 - 4 ft	•	•	•	•	•	•	•	•	•	0.06	0.32	0.02	•	•	0.01	•	0.42
4 - 6 ft	•	•	•	•	•	•	0.01	0.32	0.46	1.01	5.43	0.62	0.22	0.20	0.11	•	8.39
6 - 8 ft	•	•	•	•	•	•	0.06	2.26	1.43	4.79	19.27	1.16	0.10	0.20	0.52	•	29.79
8 - 10 ft	•	•	•	•	•	•	0.10	5.05	1.76	5.76	17.71	0.81	0.05	0.02	0.07	•	31.34
10 - 12 ft	•	•	•	•	•	•	0.11	6.46	0.99	4.33	8.42	0.29	0.01	•	•	•	20.62
12 - 14 ft	•	•	•	•	•	•	0.09	2.51	0.28	1.64	2.58	0.05	•	•	•	•	7.14
14 - 16 ft	•	•	•	•	•	•	•	1.14	0.12	0.29	0.43	•	•	•	•	•	1.98
16 - 18 ft	•	•	•	•	•	•	•	0.13	0.02	0.05	0.09	•	•	•	•	•	0.29
> 18 ft	•	•	•	•	•	•	•	•	•	0.05	•	•	•	•	•	•	0.05
Total	•	•	•	•	•	•	0.37	17.87	5.07	17.98	54.25	2.95	0.38	0.42	0.72	•	100.00

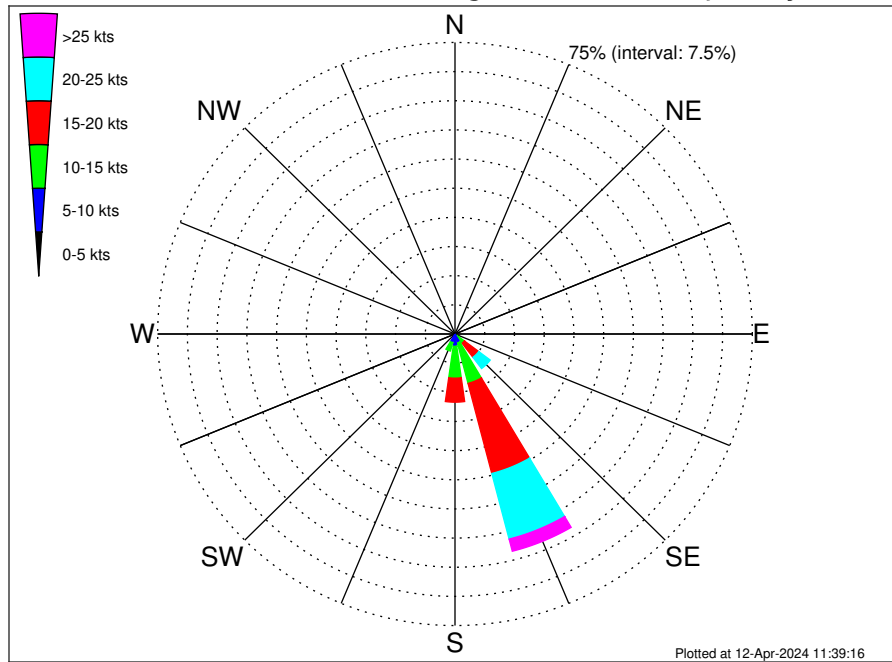
RPS Venus Well - Namibia 29316 Climatological WavePeriod Rose for January: 1979 - 2015



Joint Frequency Distribution Table

	N	NNE	NE	ENE	E	ESE	SE	SSE	S	SSW	SW	WSW	W	WNW	NW	NNW	Total
calm	•	•	•	•	•	•	•	•	•	•	•	•	•	•	•	•	•
1 - 2 sec	•	•	•	•	•	•	•	•	•	•	•	•	•	•	•	•	•
2 - 4 sec	•	•	•	•	•	•	•	•	•	•	•	•	•	•	•	•	•
4 - 6 sec	•	•	•	•	•	•	0.06	0.54	0.01	•	0.02	0.01	•	•	•	•	0.65
6 - 8 sec	•	•	•	•	•	•	0.31	9.73	1.42	0.10	0.20	0.02	•	•	•	•	11.77
8 - 10 sec	•	•	•	•	•	•	•	7.46	2.98	3.22	3.78	0.12	•	•	•	•	17.57
10 - 12 sec	•	•	•	•	•	•	•	0.12	0.34	7.51	28.56	0.99	0.01	•	•	•	37.54
12 - 14 sec	•	•	•	•	•	•	•	0.02	0.23	5.10	17.19	1.39	0.20	0.13	•	•	24.27
14 - 16 sec	•	•	•	•	•	•	•	•	0.09	1.73	3.94	0.40	0.13	0.23	0.54	•	7.07
18 - 20 sec	•	•	•	•	•	•	•	•	•	0.29	0.48	0.01	0.04	0.05	0.18	•	1.05
22 - 24 sec	•	•	•	•	•	•	•	•	•	0.02	0.07	•	•	•	•	•	0.10
Total	•	•	•	•	•	•	0.37	17.87	5.07	17.98	54.25	2.95	0.38	0.42	0.72	•	100.00

RPS Venus Well - Namibia 29316 Climatological Wind Rose for January: 1979 - 2015



Joint Frequency Distribution Table

	N	NNE	NE	ENE	E	ESE	SE	SSE	S	SSW	SW	WSW	W	WNW	NW	NNW	Total
calm	0.02	•	0.01	0.01	•	•	•	0.01	0.01	0.01	•	•	•	•	•	•	0.09
0 - 5 kts	•	0.01	•	0.01	0.05	0.05	0.10	0.15	0.29	0.23	0.21	0.23	0.09	0.10	0.06	0.05	1.62
5 - 10 kts	0.02	0.01	0.04	•	0.06	0.10	0.55	2.21	2.86	2.04	0.99	0.57	0.56	0.21	0.20	0.02	10.44
10 - 15 kts	•	•	•	•	0.02	0.10	2.33	10.75	8.20	2.25	0.66	0.27	0.26	0.26	0.21	0.01	25.32
15 - 20 kts	•	•	•	•	0.01	0.05	4.53	23.94	6.18	0.51	0.10	0.05	0.07	0.05	0.02	•	35.51
20 - 25 kts	•	•	•	•	•	•	3.63	17.43	1.59	0.04	0.02	0.04	•	•	•	•	22.74
25 - 30 kts	•	•	•	•	•	•	0.82	3.11	0.07	0.02	0.01	•	•	•	•	•	4.04
30 - 35 kts	•	•	•	•	•	•	0.09	0.12	0.01	•	0.02	•	•	•	•	•	0.24
35 - 40 kts	•	•	•	•	•	•	•	•	•	•	•	•	•	•	•	•	•
40 - 45 kts	•	•	•	•	•	•	•	•	•	•	•	•	•	•	•	•	•
45 - 50 kts	•	•	•	•	•	•	•	•	•	•	•	•	•	•	•	•	•
Total	0.05	0.02	0.05	0.02	0.15	0.29	12.04	57.73	19.21	5.10	2.01	1.16	0.98	0.61	0.49	0.09	100.00