

## RPS Venus Well - Namibia 29316 - March

Latitude: 29.48 S Longitude: 13.26 E

### Weather Days

Wave Height > 6.0 ft Mean: 19.7 days Range: 17.5 - 22.0 days p50:27 days p75:25 days p90:23.5 days

Wave Height > 7.0 ft Mean: 15.1 days Range: 12.0 - 18.3 days p50:23.5 days p75:20.5 days p90:18.5 days

Wave Height > 8.0 ft Mean: 11.2 days Range: 7.7 - 14.8 days p50:19 days p75:16 days p90:14 days

Wind Speed > 10.0 knots Mean: 25.4 days Range: 22.9 - 28.0 days p50:26.5 days p75:25 days p90:22 days

Wind Speed > 15.0 knots Mean: 17.4 days Range: 14.2 - 20.7 days p50:18.5 days p75:16.5 days p90:13 days

Wind Speed > 20.0 knots Mean: 7.5 days Range: 5.2 - 9.8 days p50:8 days p75:6 days p90:5 days

### Working Window

Wave Height < 6.0 ft  
A 1 day or longer window will statistically occur 1.4 times per month  
A 2 day or longer window will statistically occur 0.5 times per month  
A 3 day or longer window will statistically occur 0.2 times per month

Wave Height < 7.0 ft  
A 1 day or longer window will statistically occur 2.7 times per month  
A 2 day or longer window will statistically occur 1.4 times per month  
A 3 day or longer window will statistically occur 0.6 times per month

Wave Height < 8.0 ft  
A 1 day or longer window will statistically occur 3.8 times per month  
A 2 day or longer window will statistically occur 2.3 times per month  
A 3 day or longer window will statistically occur 1.3 times per month

### Waves

Mean Height: 8 - 10 ft

The wave heights will occasionally reach 16 - 18 ft, but rarely higher.

Mean Period: 10 - 12 sec

The wave periods will occasionally reach 18 - 20 sec, but rarely longer.

Principle Direction, from: SW

WindSea/Swell: 11% / 89%

### Winds

Mean Speed: 15 - 20 kts

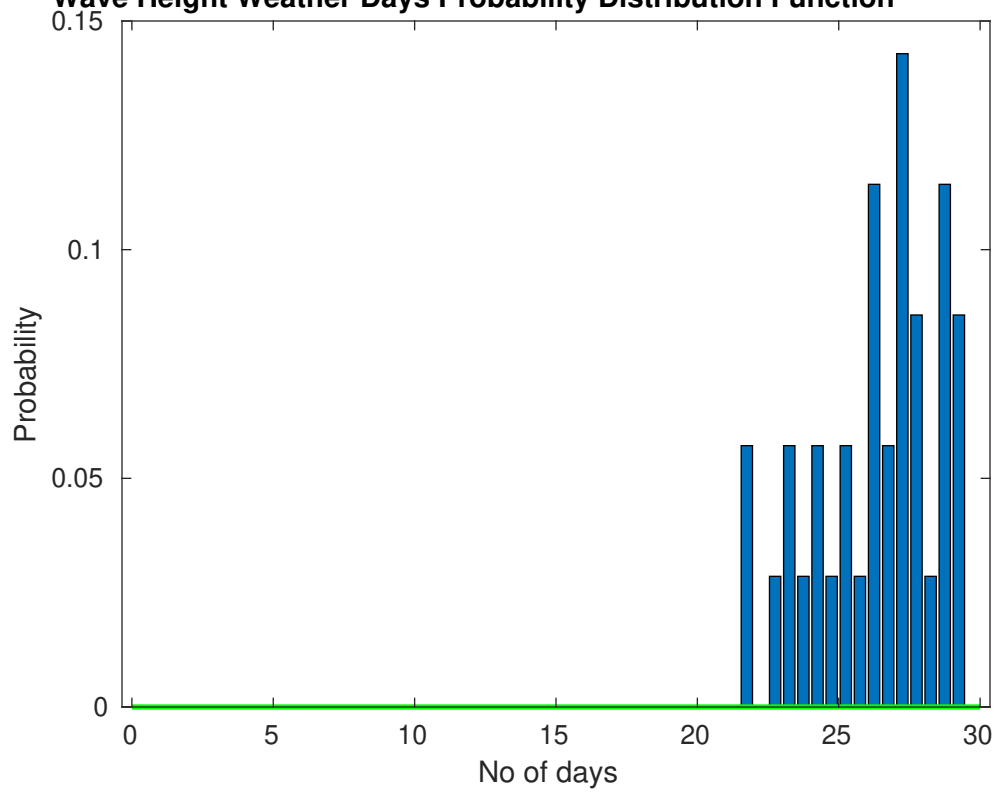
The winds will occasionally reach 25 - 30 kts, but rarely greater.

Principle Direction, from: SSE

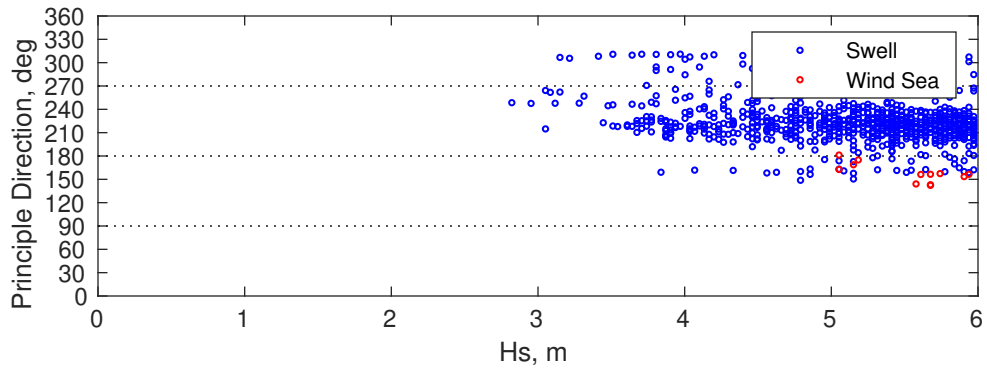
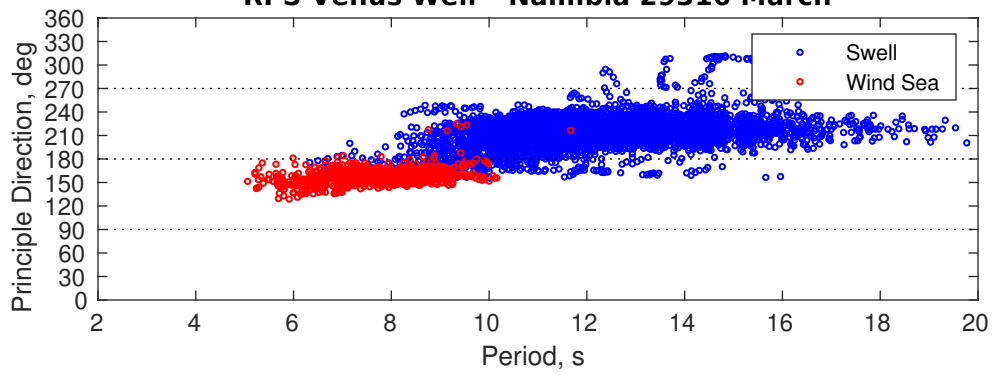
### Severe Storms

Severe storms with gale force winds and extreme waves are not expected during this month.

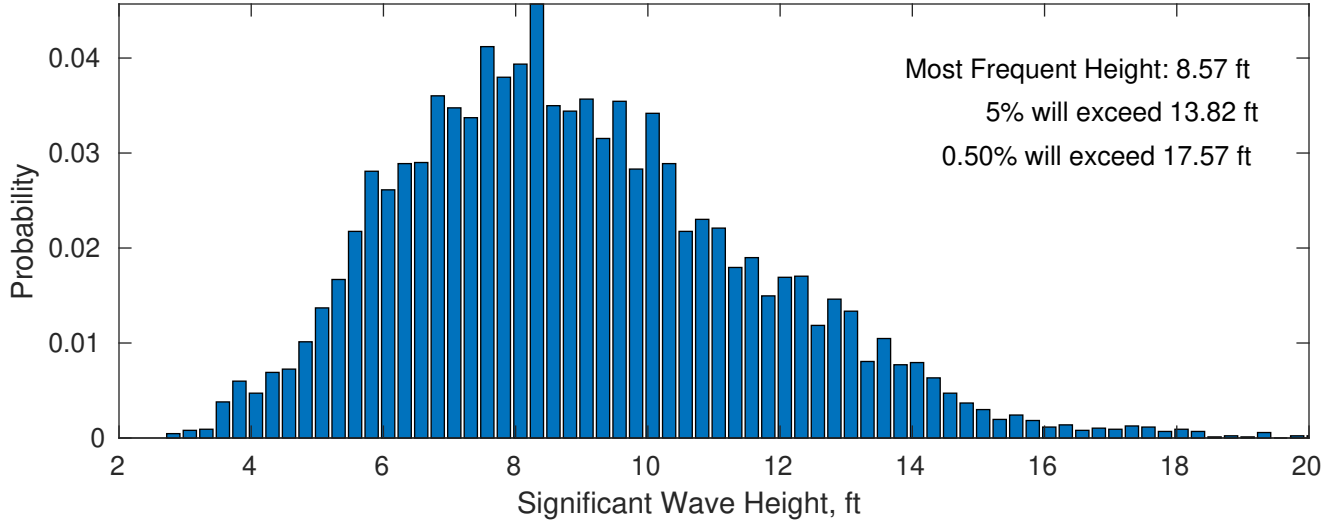
**Wave Height Weather Days Probability Distribution Function**



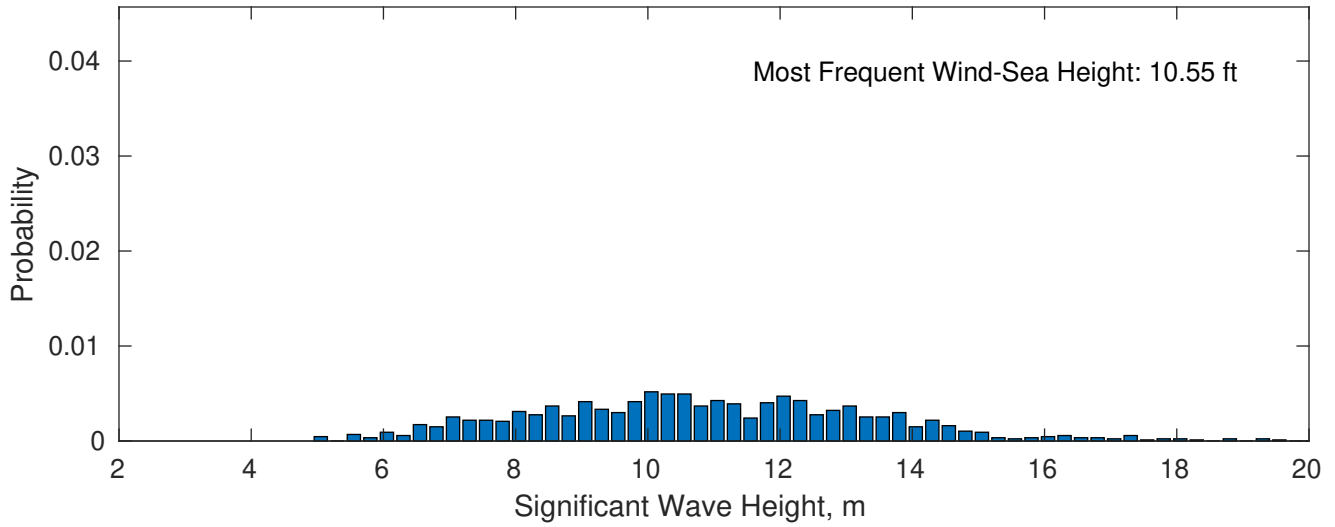
**RPS Venus Well - Namibia 29316 March**



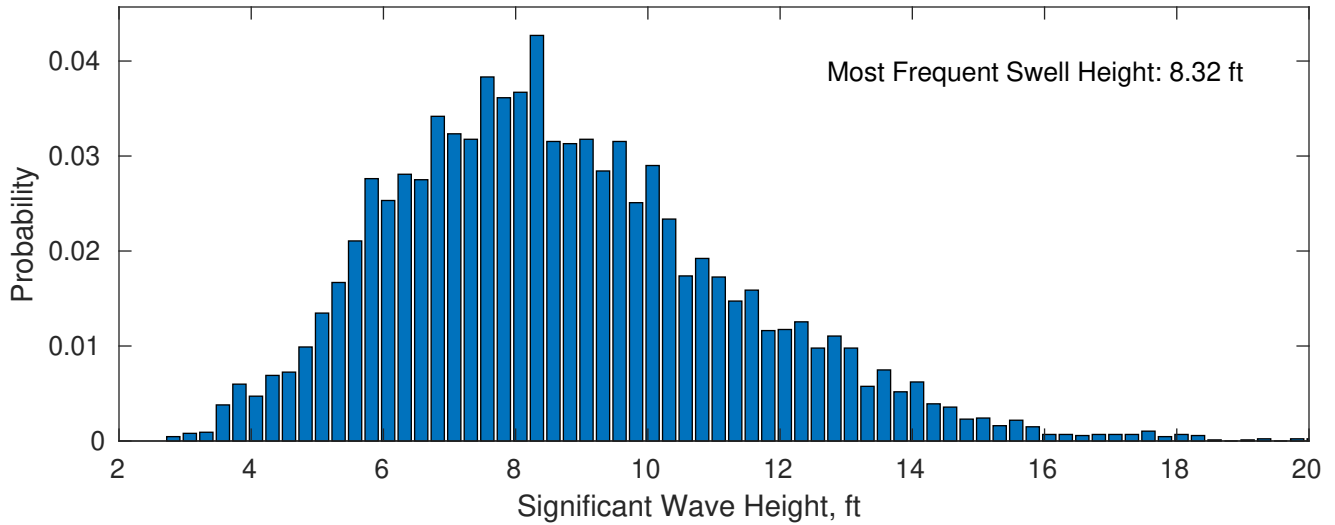
**March Wave Height PDF: 1979 - 2015**



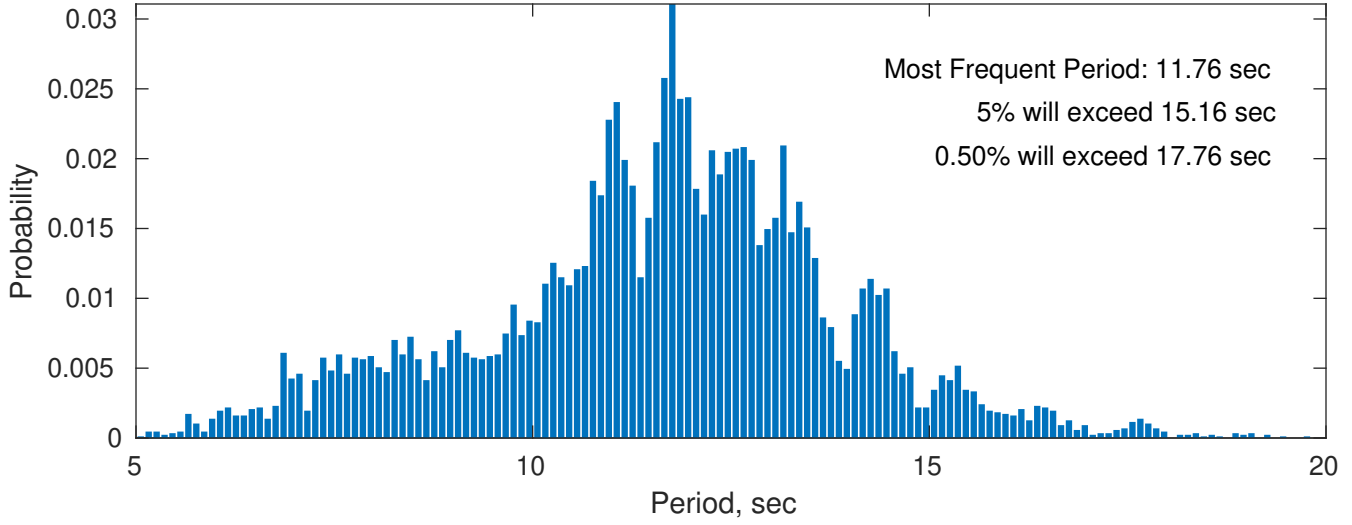
**Wind-Sea: 11.41%**



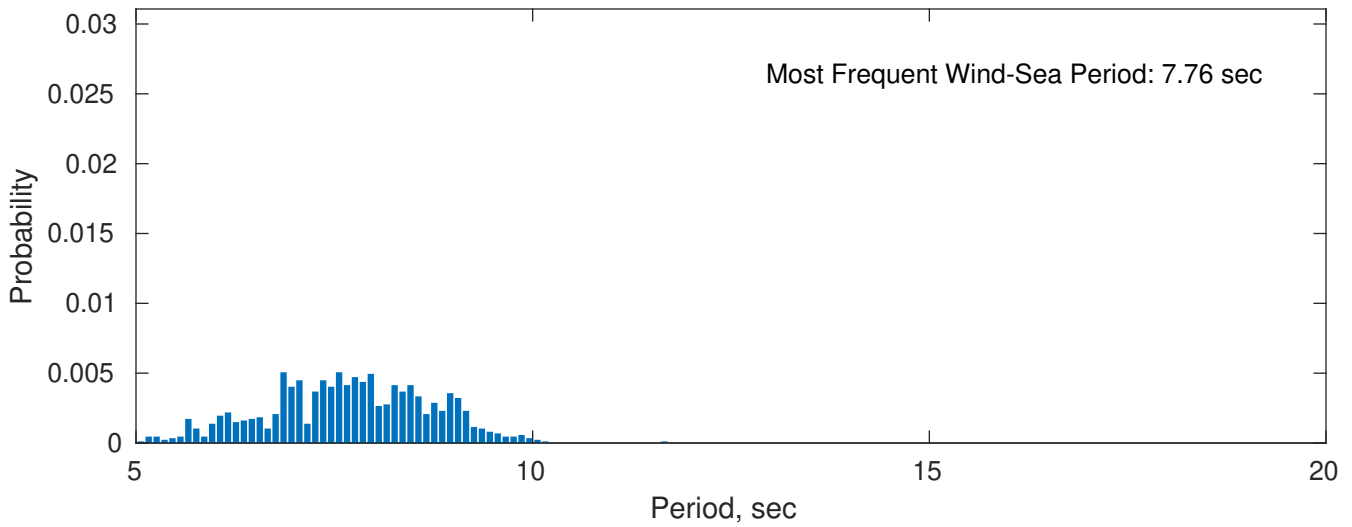
**Swell: 88.59%**



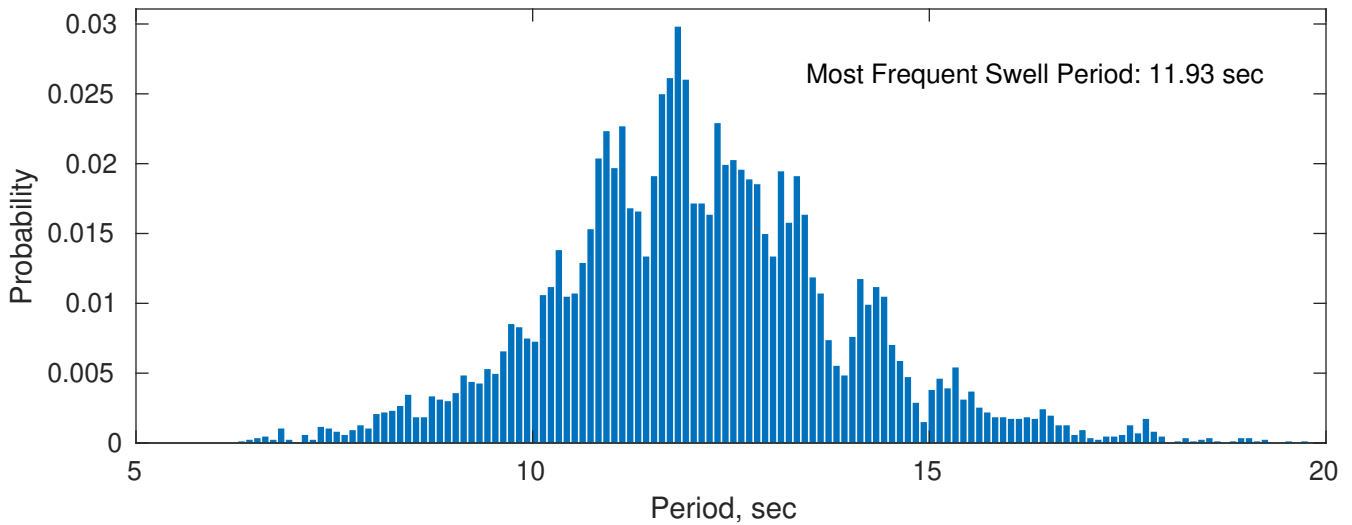
**March Peak Wave Period PDF: 1979 - 2015**



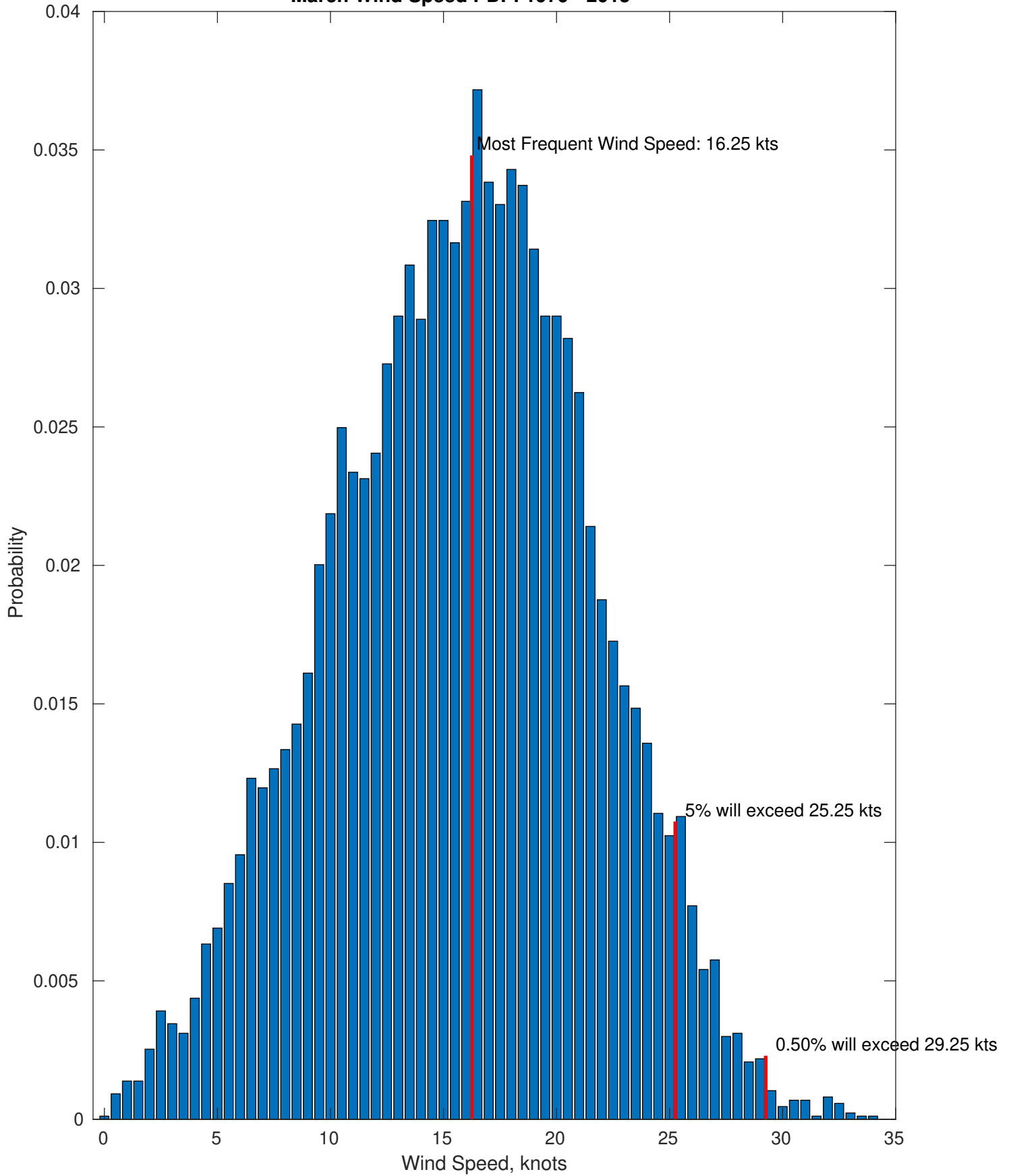
**Wind-Sea: 11.41%**



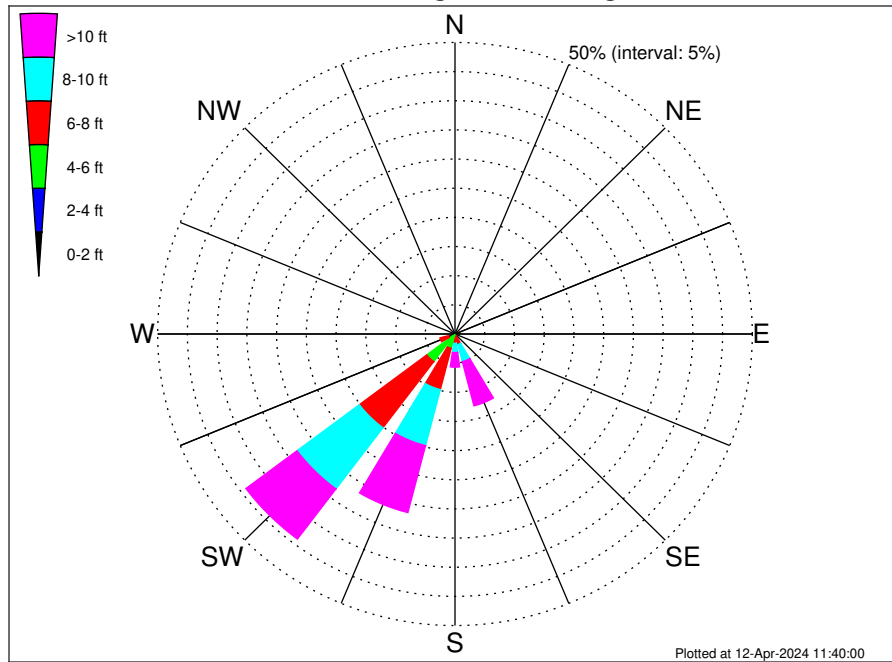
**Swell: 88.59%**



March Wind Speed PDF: 1979 - 2015



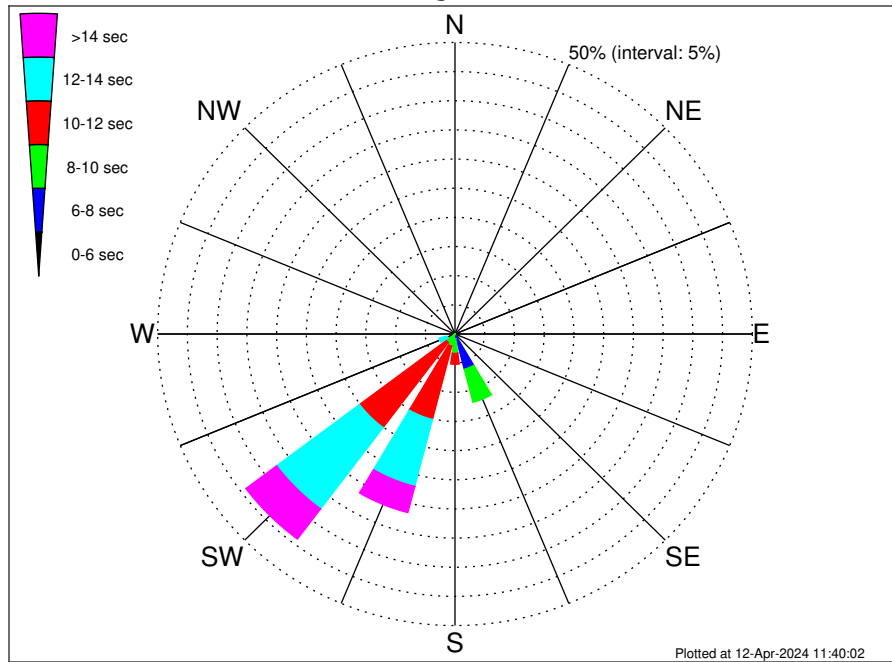
**RPS Venus Well - Namibia 29316 Climatological WaveHeight Rose for March: 1979 - 2015**



**Joint Frequency Distribution Table**

	N	NNE	NE	ENE	E	ESE	SE	SSE	S	SSW	SW	WSW	W	WNW	NW	NNW	Total
calm	•	•	•	•	•	•	•	•	•	•	•	•	•	•	•	•	•
1 - 2 ft	•	•	•	•	•	•	•	•	•	•	•	•	•	•	•	•	•
2 - 4 ft	•	•	•	•	•	•	•	0.01	•	0.16	0.41	0.15	0.06	0.03	0.10	•	0.93
4 - 6 ft	•	•	•	•	•	•	0.03	0.35	0.29	2.38	5.52	1.00	0.20	0.17	0.23	•	10.17
6 - 8 ft	•	•	•	•	•	•	0.24	1.51	1.31	7.31	14.20	1.46	0.07	0.07	0.17	•	26.34
8 - 10 ft	•	•	•	•	•	•	0.31	3.03	1.59	9.92	13.13	0.92	•	0.01	0.20	•	29.11
10 - 12 ft	•	•	•	•	•	•	0.20	3.75	1.35	6.48	6.78	0.14	•	•	0.03	•	18.72
12 - 14 ft	•	•	•	•	•	•	0.05	2.88	0.77	3.50	2.88	0.01	•	•	•	•	10.08
14 - 16 ft	•	•	•	•	•	•	0.02	0.83	0.35	1.30	0.86	0.02	•	•	•	•	3.38
16 - 18 ft	•	•	•	•	•	•	•	0.29	0.05	0.36	0.17	•	•	•	•	•	0.86
> 18 ft	•	•	•	•	•	•	•	0.09	•	0.23	0.07	•	•	•	•	•	0.39
Total	•	•	•	•	•	•	0.85	12.73	5.70	31.64	44.03	3.71	0.32	0.29	0.74	•	100.00

**RPS Venus Well - Namibia 29316 Climatological WavePeriod Rose for March: 1979 - 2015**

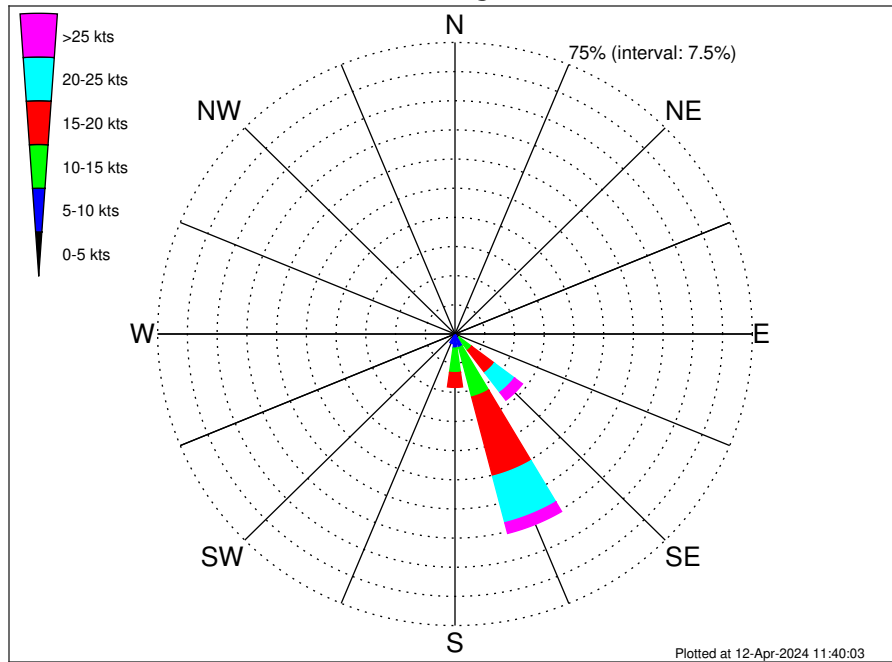


**Joint Frequency Distribution Table**

	N	NNE	NE	ENE	E	ESE	SE	SSE	S	SSW	SW	WSW	W	WNW	NW	NNW	Total
calm	•	•	•	•	•	•	•	•	•	•	•	•	•	•	•	•	•
1 - 2 sec	•	•	•	•	•	•	•	•	•	•	•	•	•	•	•	•	•
2 - 4 sec	•	•	•	•	•	•	•	•	•	•	•	•	•	•	•	•	•
4 - 6 sec	•	•	•	•	•	•	0.16	0.40	0.03	•	•	•	•	•	•	•	0.60
6 - 8 sec	•	•	•	•	•	•	0.68	5.83	0.76	0.02	•	•	•	•	•	•	7.30
8 - 10 sec	•	•	•	•	•	•	0.01	5.85	2.54	2.14	1.85	0.25	•	•	•	•	12.65
10 - 12 sec	•	•	•	•	•	•	•	0.33	1.85	12.98	18.24	1.13	0.03	•	•	•	34.57
12 - 14 sec	•	•	•	•	•	•	•	0.22	0.39	11.85	17.47	1.43	0.14	0.09	0.03	•	31.63
14 - 16 sec	•	•	•	•	•	•	•	0.09	0.12	3.98	5.03	0.83	0.13	0.13	0.31	•	10.61
18 - 20 sec	•	•	•	•	•	•	•	•	•	0.56	1.15	0.07	0.02	0.07	0.39	•	2.27
22 - 24 sec	•	•	•	•	•	•	•	•	•	0.09	0.29	•	•	•	•	•	0.38
Total	•	•	•	•	•	•	0.85	12.73	5.70	31.64	44.03	3.71	0.32	0.29	0.74	•	100.00



**RPS Venus Well - Namibia 29316 Climatological Wind Rose for March: 1979 - 2015**



**Joint Frequency Distribution Table**

	N	NNE	NE	ENE	E	ESE	SE	SSE	S	SSW	SW	WSW	W	WNW	NW	NNW	Total
calm	•	0.01	•	0.03	•	0.01	•	•	0.02	•	0.01	•	•	•	0.01	•	0.10
0 - 5 kts	0.06	0.06	0.06	0.01	0.03	0.14	0.21	0.31	0.36	0.44	0.35	0.29	0.10	0.09	0.12	0.03	2.65
5 - 10 kts	0.03	0.01	0.01	0.03	0.01	0.26	1.15	3.28	3.26	2.12	0.81	0.60	0.44	0.26	0.14	0.15	12.57
10 - 15 kts	0.02	•	•	•	0.02	0.21	3.90	13.15	6.31	1.31	0.58	0.30	0.32	0.30	0.14	0.02	26.59
15 - 20 kts	•	•	•	•	0.02	0.14	7.19	21.06	3.80	0.28	0.17	0.14	0.07	0.07	0.02	0.01	32.97
20 - 25 kts	•	•	•	•	•	0.14	6.34	12.34	0.60	0.09	0.08	•	•	•	0.01	•	19.60
25 - 30 kts	•	•	•	•	•	0.05	2.32	2.68	0.08	0.01	•	•	•	•	•	•	5.14
30 - 35 kts	•	•	•	•	•	•	0.21	0.17	•	•	•	•	•	•	•	•	0.38
35 - 40 kts	•	•	•	•	•	•	•	•	•	•	•	•	•	•	•	•	•
40 - 45 kts	•	•	•	•	•	•	•	•	•	•	•	•	•	•	•	•	•
45 - 50 kts	•	•	•	•	•	•	•	•	•	•	•	•	•	•	•	•	•
Total	0.12	0.08	0.07	0.08	0.09	0.94	21.33	53.00	14.42	4.25	1.99	1.32	0.93	0.73	0.44	0.22	100.00