

RPS Venus Well - Namibia 29316 - November

Latitude: 29.48 S Longitude: 13.26 E

Weather Days

Wave Height > 6.0 ft Mean: 21.2 days Range: 18.9 - 23.5 days p50:27.5 days p75:25 days p90:23 days

Wave Height > 7.0 ft Mean: 16.4 days Range: 13.4 - 19.4 days p50:24 days p75:21 days p90:19.5 days

Wave Height > 8.0 ft Mean: 12.4 days Range: 8.8 - 15.9 days p50:19.5 days p75:16 days p90:14.5 days

Wind Speed > 10.0 knots Mean: 25.9 days Range: 23.8 - 27.9 days p50:26 days p75:24.5 days p90:23.5 days

Wind Speed > 15.0 knots Mean: 17.9 days Range: 14.9 - 20.8 days p50:18.5 days p75:15 days p90:14.5 days

Wind Speed > 20.0 knots Mean: 7.9 days Range: 5.4 - 10.5 days p50:8.5 days p75:6 days p90:5.5 days

Working Window

Wave Height < 6.0 ft
A 1 day or longer window will statistically occur 1.2 times per month
A 2 day or longer window will statistically occur 0.5 times per month
A 3 day or longer window will statistically occur 0.2 times per month

Wave Height < 7.0 ft
A 1 day or longer window will statistically occur 2.5 times per month
A 2 day or longer window will statistically occur 1.2 times per month
A 3 day or longer window will statistically occur 0.5 times per month

Wave Height < 8.0 ft
A 1 day or longer window will statistically occur 3.7 times per month
A 2 day or longer window will statistically occur 2.2 times per month
A 3 day or longer window will statistically occur 1.0 times per month

Waves

Mean Height: 8 - 10 ft

The wave heights will occasionally reach 16 - 18 ft, but rarely higher.

Mean Period: 10 - 12 sec

The wave periods will occasionally reach 18 - 20 sec, but rarely longer.

Principle Direction, from: SW

WindSea/Swell: 14% / 86%

Winds

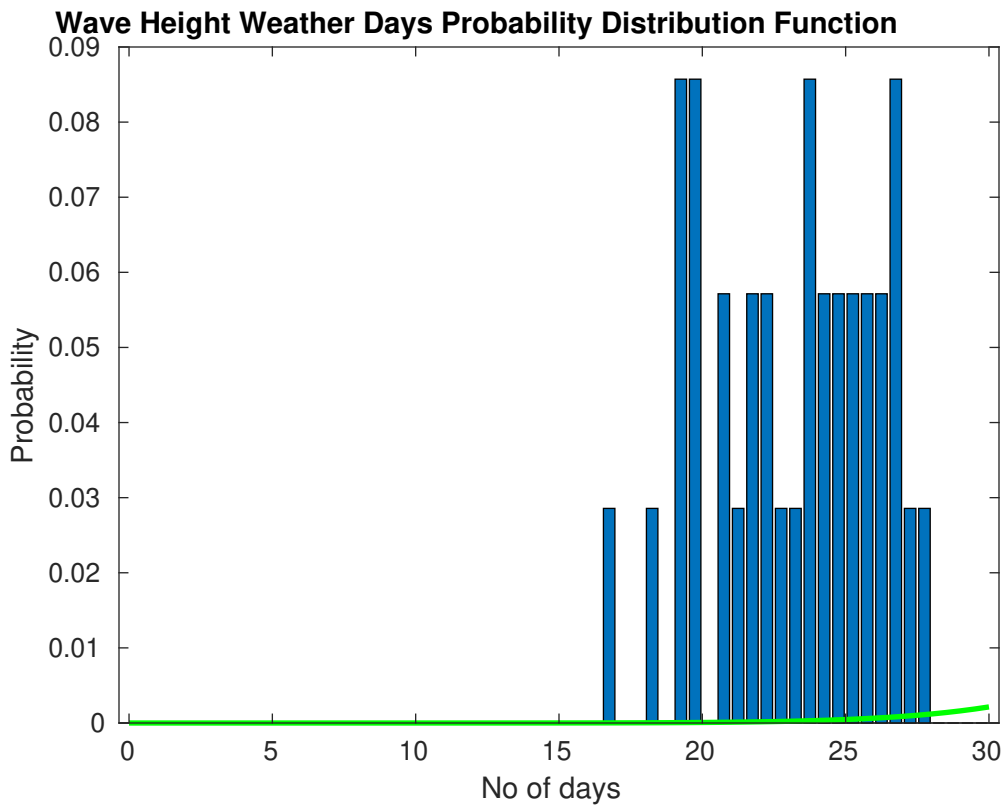
Mean Speed: 15 - 20 kts

The winds will occasionally reach 30 - 35 kts, but rarely greater.

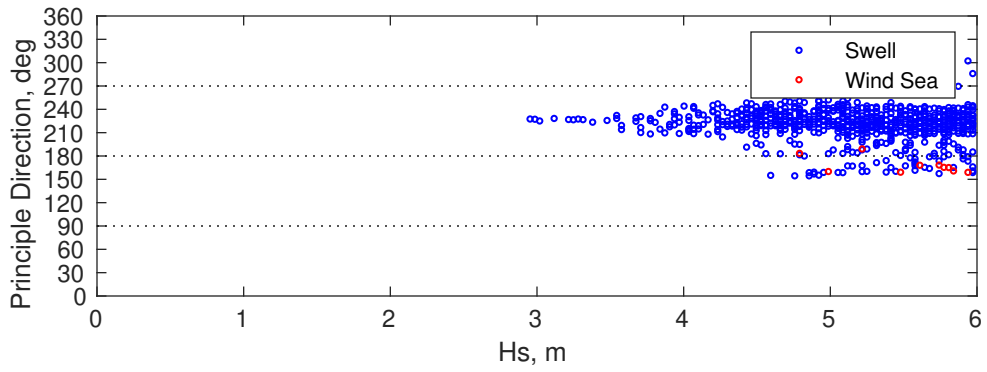
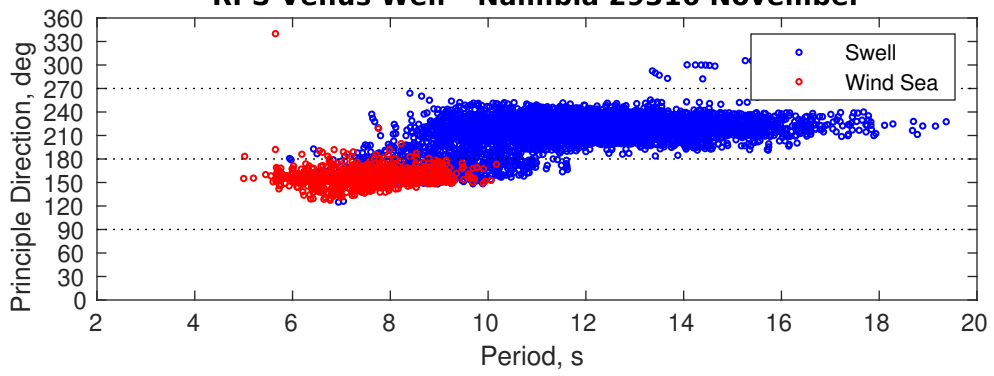
Principle Direction, from: SSE

Severe Storms

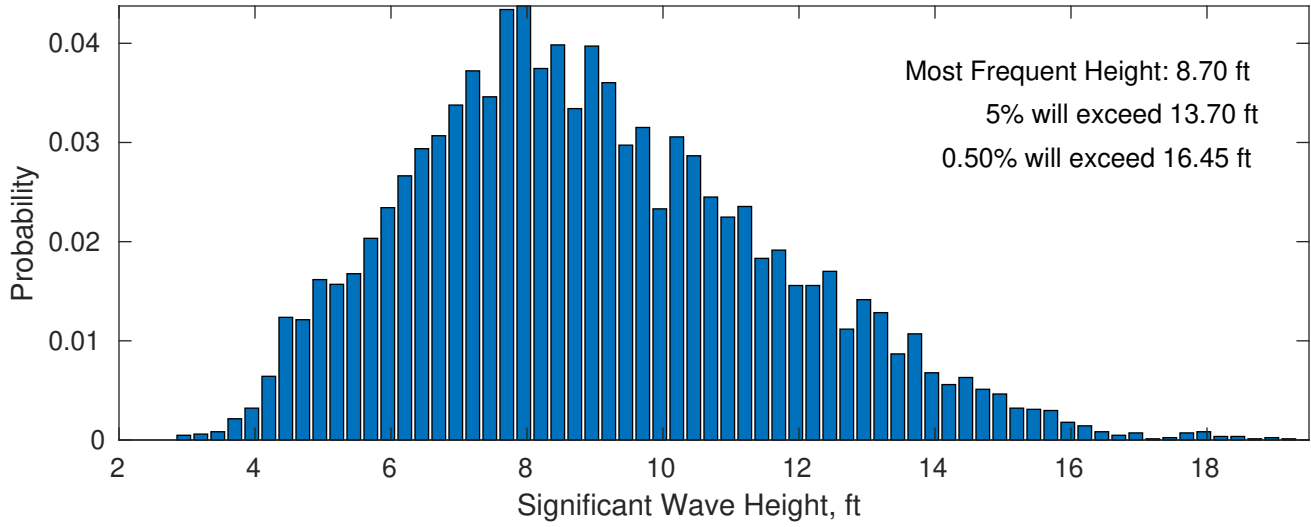
Severe storms with gale force winds and extreme waves are not expected during this month.



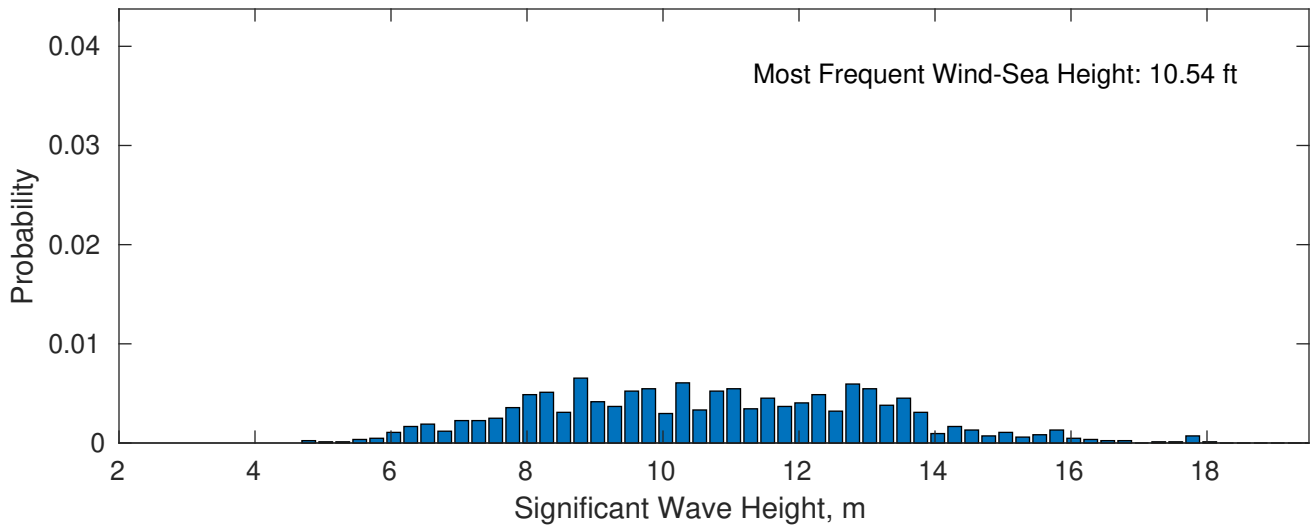
RPS Venus Well - Namibia 29316 November



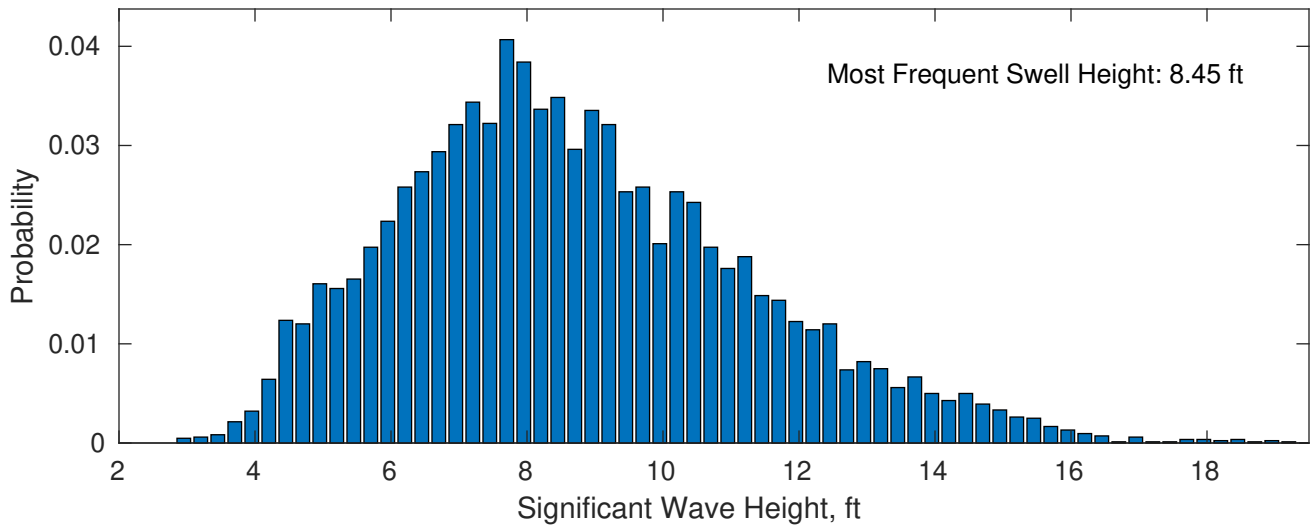
November Wave Height PDF: 1979 - 2015



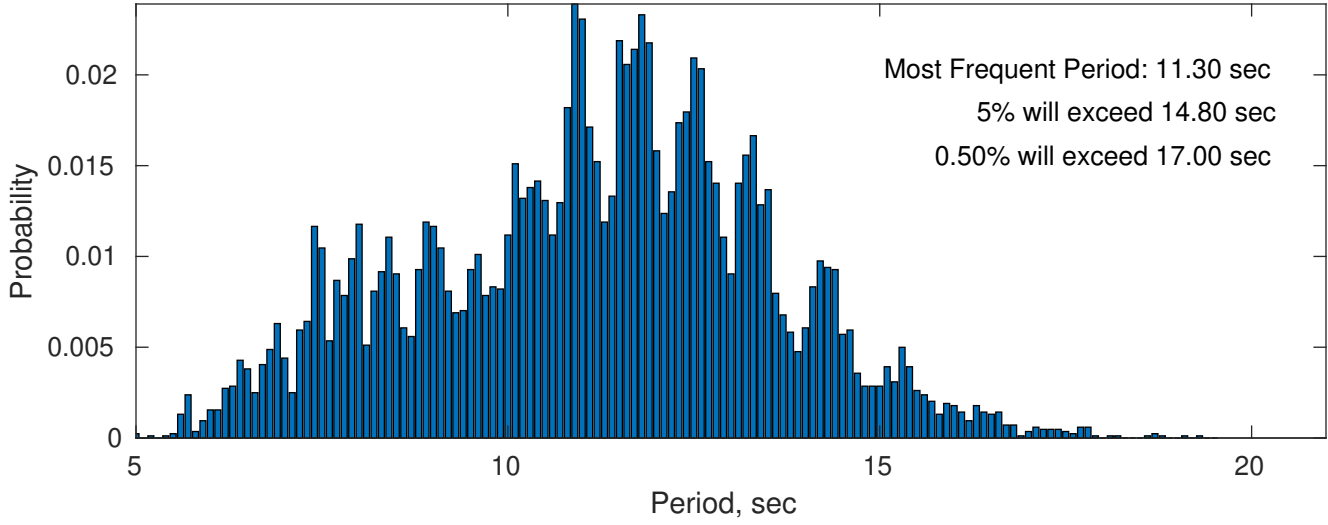
Wind-Sea: 13.64%



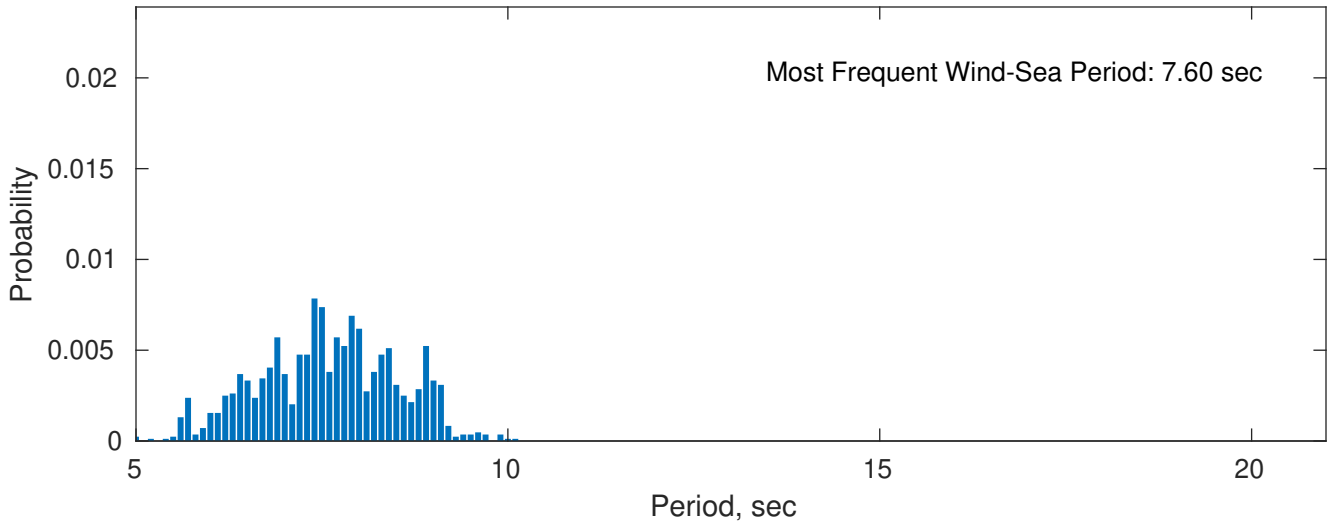
Swell: 86.36%



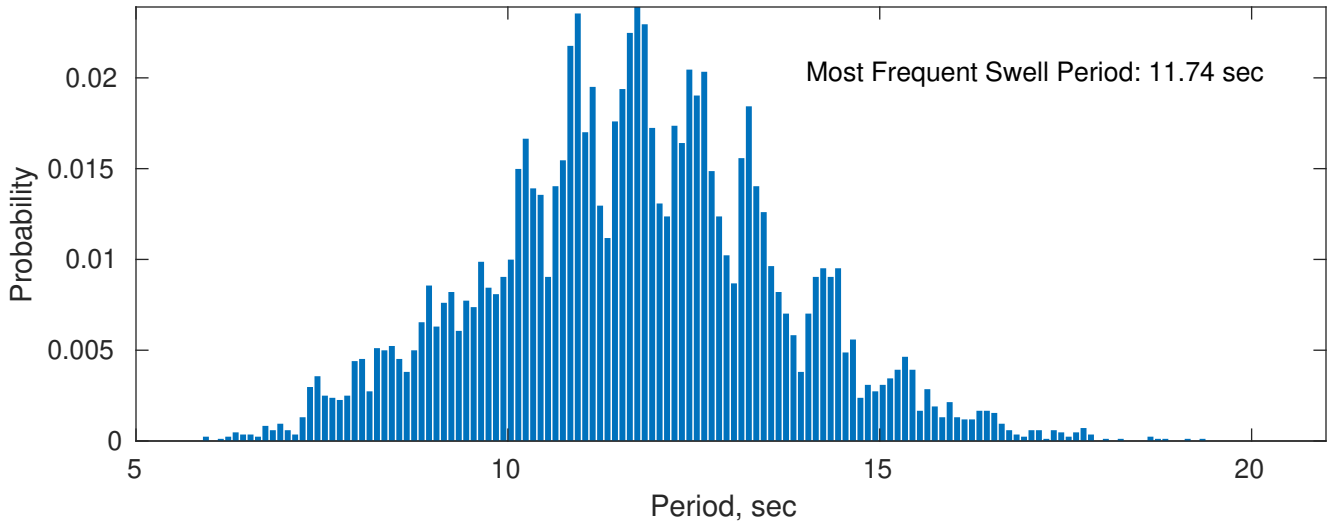
November Peak Wave Period PDF: 1979 - 2015



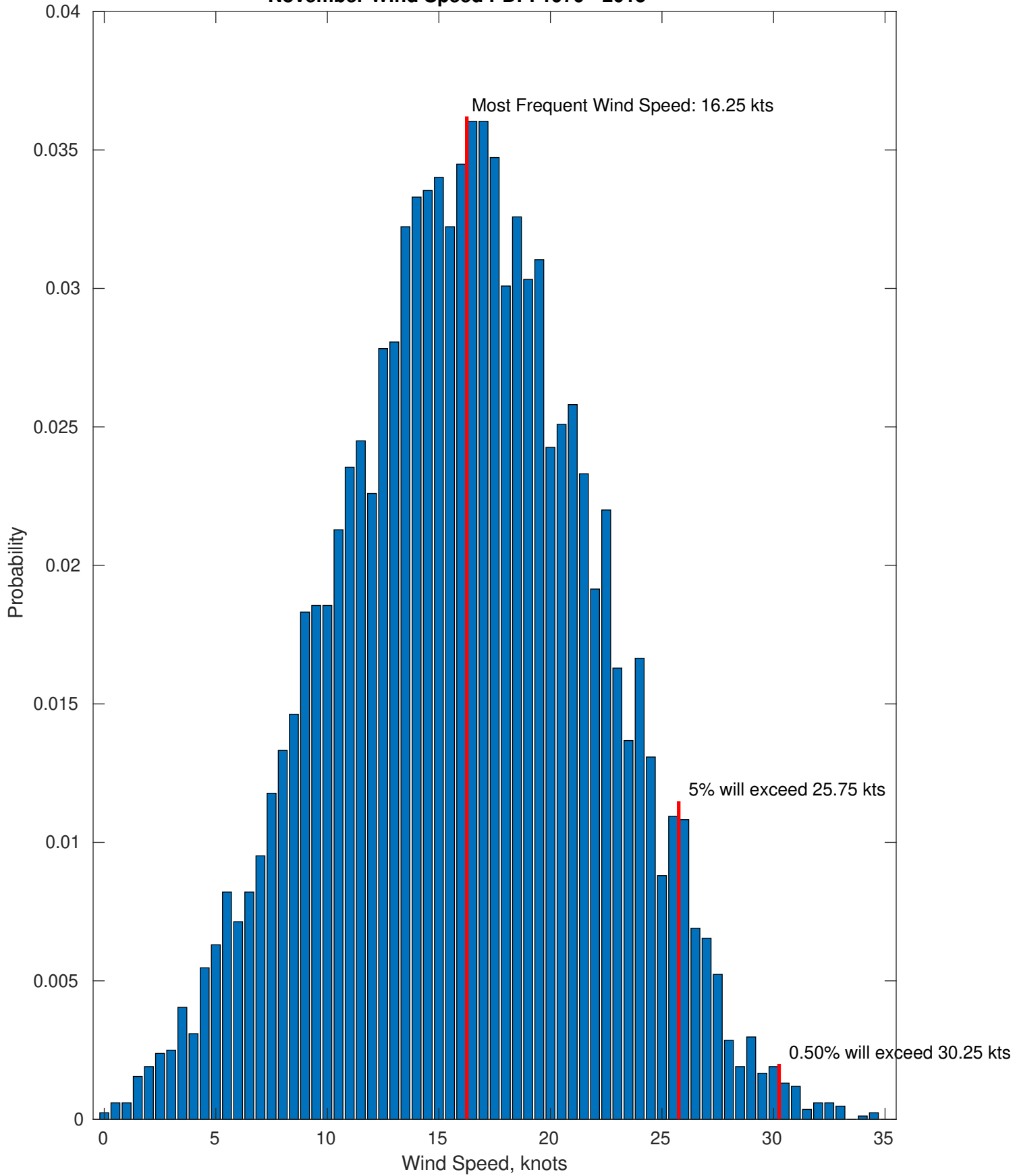
Wind-Sea: 13.64%



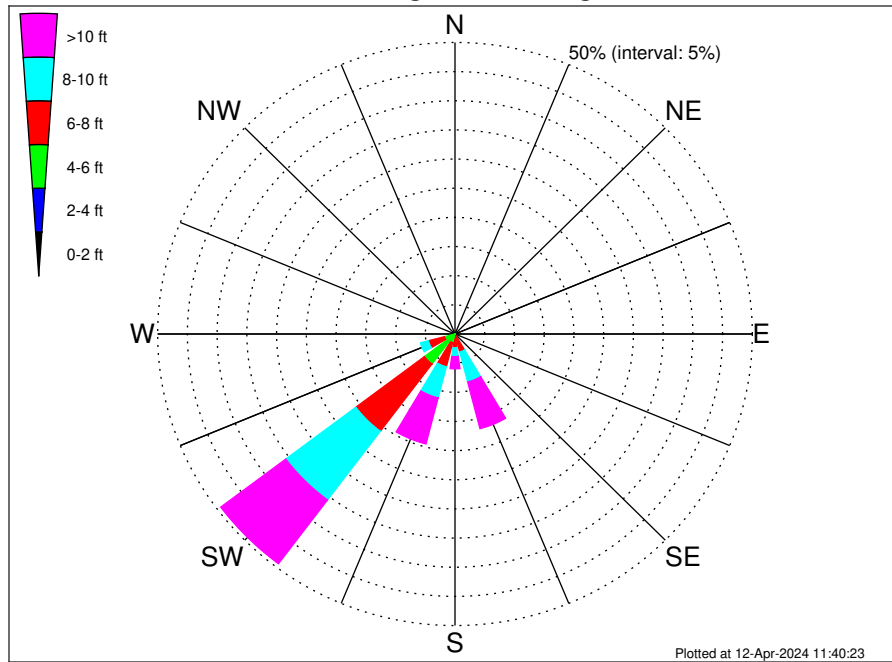
Swell: 86.36%



November Wind Speed PDF: 1979 - 2015



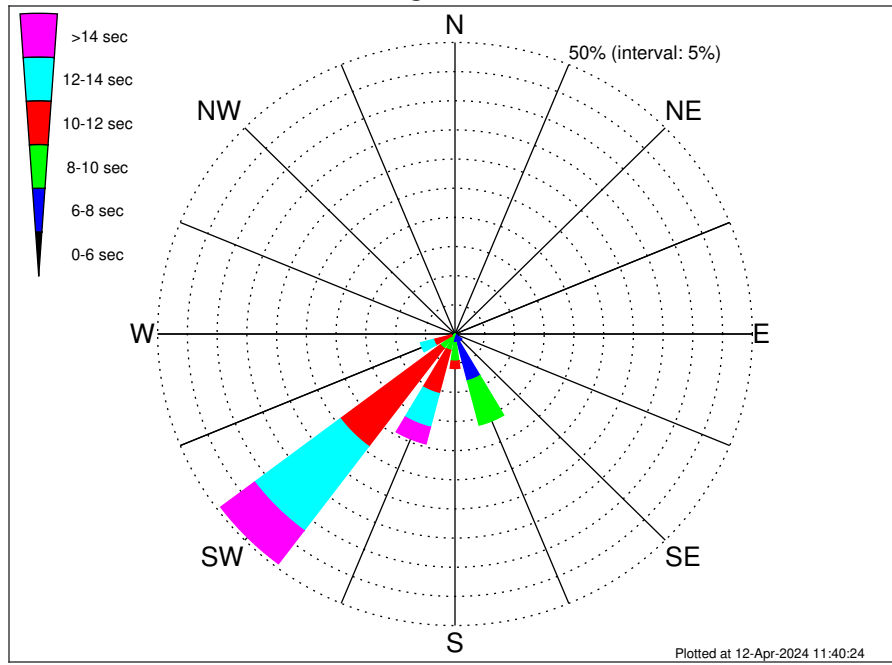
RPS Venus Well - Namibia 29316 Climatological WaveHeight Rose for November: 1979 - 2015



Joint Frequency Distribution Table

	N	NNE	NE	ENE	E	ESE	SE	SSE	S	SSW	SW	WSW	W	WNW	NW	NNW	Total
calm
1 - 2 ft
2 - 4 ft	0.05	0.38	0.02	0.45
4 - 6 ft	0.45	0.50	1.49	6.06	1.82	0.01	0.18	0.07	.	10.58
6 - 8 ft	0.02	2.74	1.86	4.27	14.44	2.78	0.04	.	.	0.01	26.15
8 - 10 ft	0.52	5.32	1.53	5.53	14.76	1.38	29.04
10 - 12 ft	0.65	3.51	1.39	3.77	9.00	0.43	18.75
12 - 14 ft	0.21	3.53	0.50	2.78	3.42	0.12	10.57
14 - 16 ft	0.06	1.00	0.20	1.38	0.96	0.06	3.66
16 - 18 ft	0.01	0.20	.	0.14	0.24	0.02	0.62
> 18 ft	0.02	.	0.07	0.06	0.01	0.17
Total	1.49	16.77	5.98	19.48	49.33	6.65	0.05	0.18	0.07	0.01	100.00

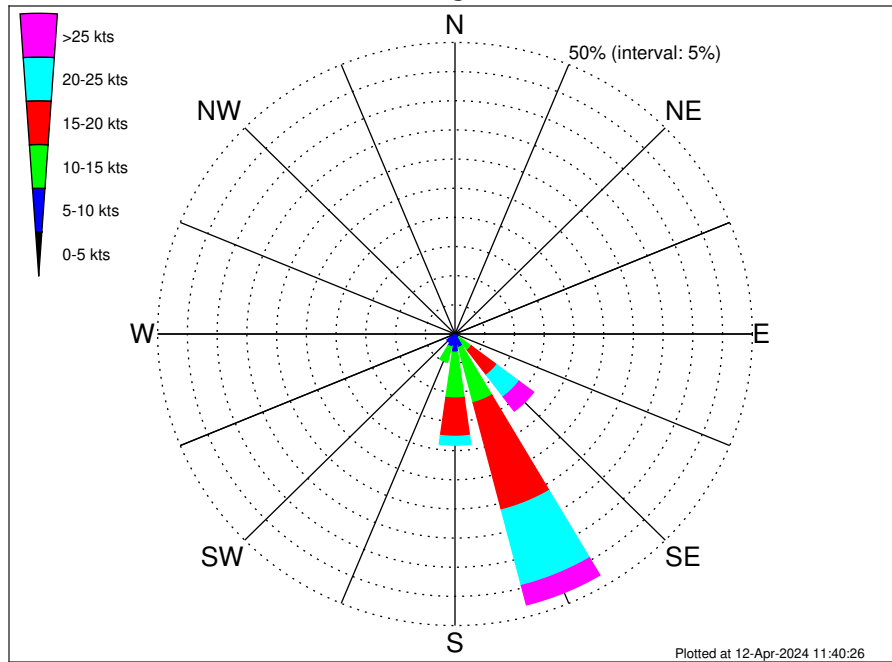
RPS Venus Well - Namibia 29316 Climatological WavePeriod Rose for November: 1979 - 2015



Joint Frequency Distribution Table

	N	NNE	NE	ENE	E	ESE	SE	SSE	S	SSW	SW	WSW	W	WNW	NW	NNW	Total
calm	•	•	•	•	•	•	•	•	•	•	•	•	•	•	•	•	•
1 - 2 sec	•	•	•	•	•	•	•	•	•	•	•	•	•	•	•	•	•
2 - 4 sec	•	•	•	•	•	•	•	•	•	•	•	•	•	•	•	•	•
4 - 6 sec	•	•	•	•	•	•	0.05	0.45	0.05	0.01	•	•	•	•	•	0.01	0.57
6 - 8 sec	•	•	•	•	•	•	1.39	7.84	1.45	0.13	0.05	0.01	•	•	•	•	10.87
8 - 10 sec	•	•	•	•	•	•	0.05	7.86	3.16	2.76	3.04	0.62	0.02	•	•	•	17.52
10 - 12 sec	•	•	•	•	•	•	•	0.62	1.26	7.66	21.05	3.09	•	•	•	•	33.68
12 - 14 sec	•	•	•	•	•	•	•	•	0.06	5.96	18.06	2.28	•	0.05	•	•	26.41
14 - 16 sec	•	•	•	•	•	•	•	•	•	2.66	5.93	0.55	0.02	0.12	0.04	•	9.32
18 - 20 sec	•	•	•	•	•	•	•	•	•	0.29	1.11	0.10	•	0.01	0.04	•	1.53
22 - 24 sec	•	•	•	•	•	•	•	•	•	0.01	0.08	•	•	•	•	•	0.10
Total	•	•	•	•	•	•	1.49	16.77	5.98	19.48	49.33	6.65	0.05	0.18	0.07	0.01	100.00

RPS Venus Well - Namibia 29316 Climatological Wind Rose for November: 1979 - 2015



Joint Frequency Distribution Table

	N	NNE	NE	ENE	E	ESE	SE	SSE	S	SSW	SW	WSW	W	WNW	NW	NNW	Total
calm	•	0.01	•	•	0.01	•	•	0.01	•	0.01	0.01	0.01	•	•	0.01	•	0.08
0 - 5 kts	0.06	0.02	0.04	0.06	0.06	0.05	0.05	0.18	0.38	0.34	0.21	0.26	0.14	0.13	0.13	0.04	2.15
5 - 10 kts	0.05	0.06	0.04	0.05	0.07	0.21	0.83	2.19	2.75	1.91	1.47	0.64	0.59	0.30	0.27	0.15	11.59
10 - 15 kts	0.08	0.05	0.01	0.04	0.01	0.12	2.57	9.80	7.86	2.72	1.06	0.74	0.61	0.44	0.36	0.08	26.54
15 - 20 kts	0.05	0.01	0.02	•	•	0.14	5.34	18.99	6.58	1.05	0.27	0.18	0.15	0.20	0.13	0.04	33.15
20 - 25 kts	•	•	•	•	•	0.06	4.70	13.39	1.50	0.17	•	•	•	0.04	0.05	0.04	19.93
25 - 30 kts	•	•	•	•	•	•	2.56	3.25	0.05	•	•	•	•	•	•	0.01	5.86
30 - 35 kts	•	•	•	•	•	•	0.50	0.18	•	•	•	•	•	•	•	•	0.68
35 - 40 kts	•	•	•	•	•	•	•	•	•	•	•	•	•	•	•	•	•
40 - 45 kts	•	•	•	•	•	•	•	•	•	•	•	•	•	•	•	•	•
45 - 50 kts	•	•	•	•	•	•	•	•	•	•	•	•	•	•	•	•	•
Total	0.24	0.15	0.11	0.14	0.15	0.58	16.54	47.98	19.11	6.21	3.03	1.83	1.50	1.11	0.95	0.36	100.00