

RWE Humboldt Bay OCS-P-0561 - August

Latitude: 41.00 N Longitude: 125.00 W

Weather Days

Wave Height > 6.0 ft Mean: 14.2 days Range: 9.7 - 18.7 days p50:18 days p75:15 days p90:12.5 days

Wave Height > 7.0 ft Mean: 11.2 days Range: 6.7 - 15.7 days p50:13.5 days p75:10 days p90:7 days

Wave Height > 8.0 ft Mean: 7.8 days Range: 3.6 - 12.1 days p50:8.5 days p75:5.5 days p90:3 days

Wind Speed > 10.0 knots Mean: 22.6 days Range: 19.1 - 26.1 days p50:23.5 days p75:20 days p90:18.5 days

Wind Speed > 15.0 knots Mean: 17.3 days Range: 13.2 - 21.4 days p50:17.5 days p75:15 days p90:13 days

Wind Speed > 20.0 knots Mean: 10.9 days Range: 6.4 - 15.4 days p50:10.5 days p75:8 days p90:6 days

Working Window

Wave Height < 6.0 ft
A 1 day or longer window will statistically occur 3.5 times per month
A 2 day or longer window will statistically occur 2.3 times per month
A 3 day or longer window will statistically occur 1.5 times per month

Wave Height < 7.0 ft
A 1 day or longer window will statistically occur 4.4 times per month
A 2 day or longer window will statistically occur 3.0 times per month
A 3 day or longer window will statistically occur 2.2 times per month

Wave Height < 8.0 ft
A 1 day or longer window will statistically occur 4.1 times per month
A 2 day or longer window will statistically occur 3.3 times per month
A 3 day or longer window will statistically occur 2.5 times per month

Waves

Mean Height: 6 - 8 ft

The wave heights will occasionally reach 12 - 14 ft, but rarely higher.

Mean Period: 8 - 10 sec

The wave periods will occasionally reach 22 - 24 sec, but rarely longer.

Principle Direction, from: NNW

WindSea/Swell: 35% / 65%

Winds

Mean Speed: 15 - 20 kts

The winds will occasionally reach 30 - 35 kts, but rarely greater.

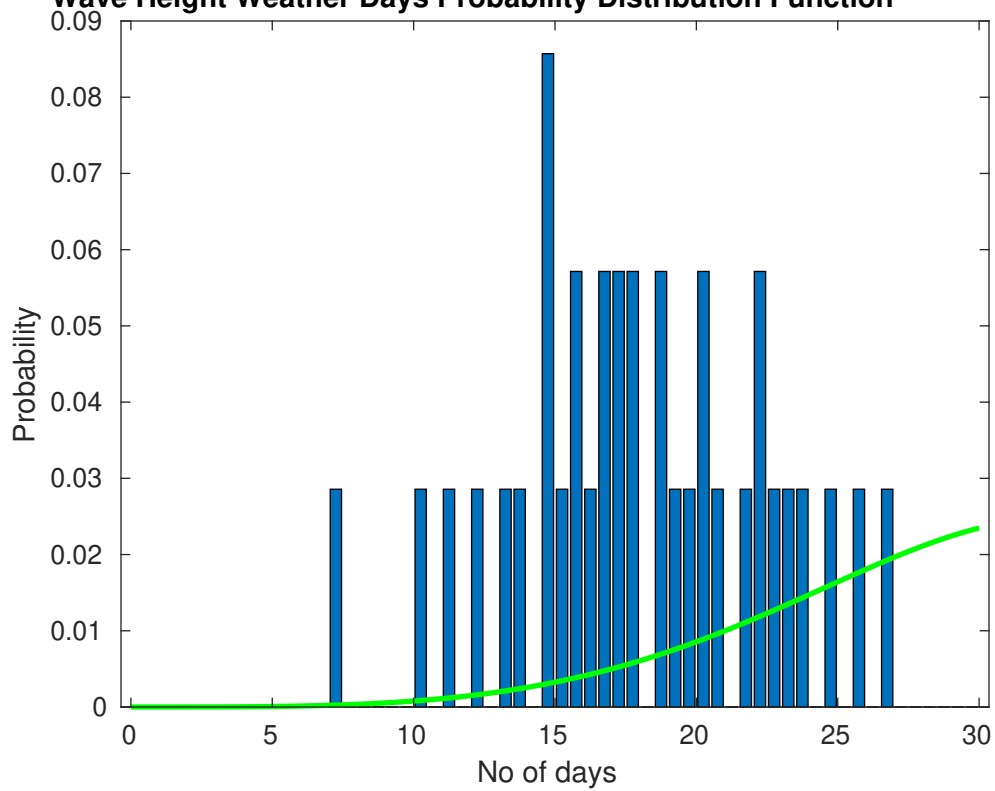
Principle Direction, from: NNW

Severe Storms

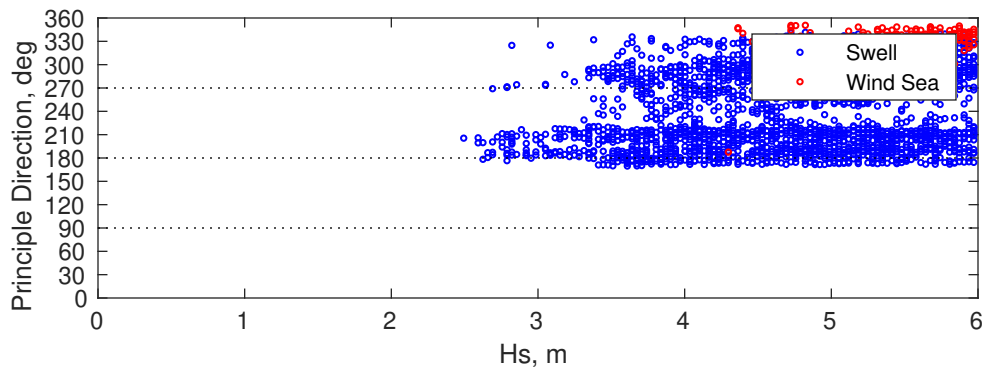
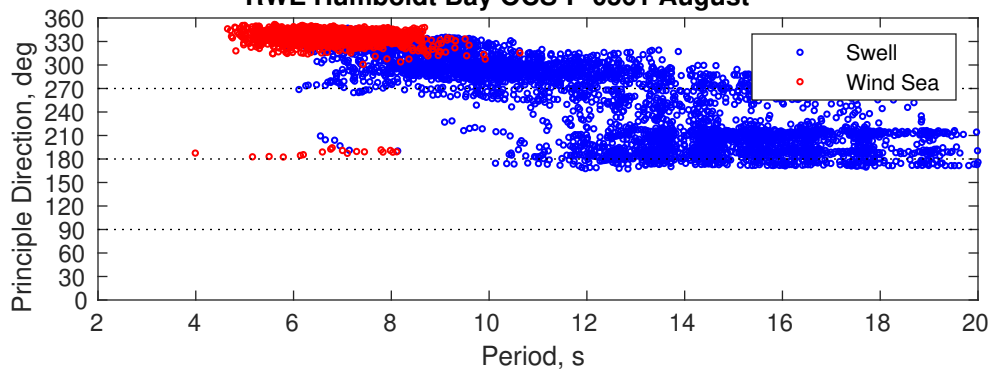
There is a 3 % chance of a storm occurring in the month with winds peaking above 34 kts.

There is little chance of a storm occurring in the month with waves peaking at 4m (13 ft) or greater.

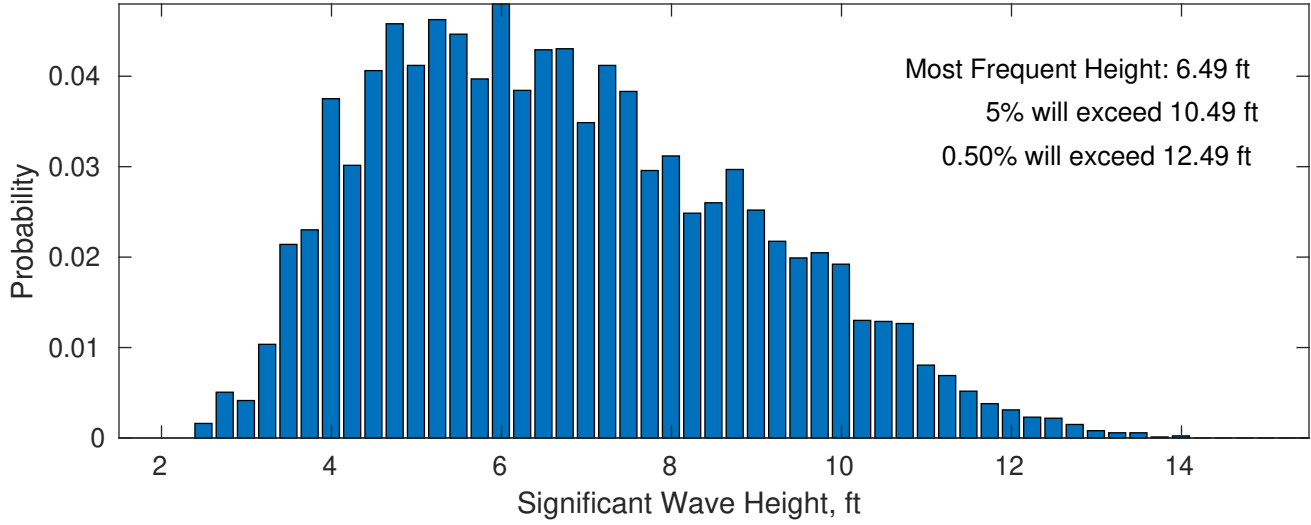
Wave Height Weather Days Probability Distribution Function



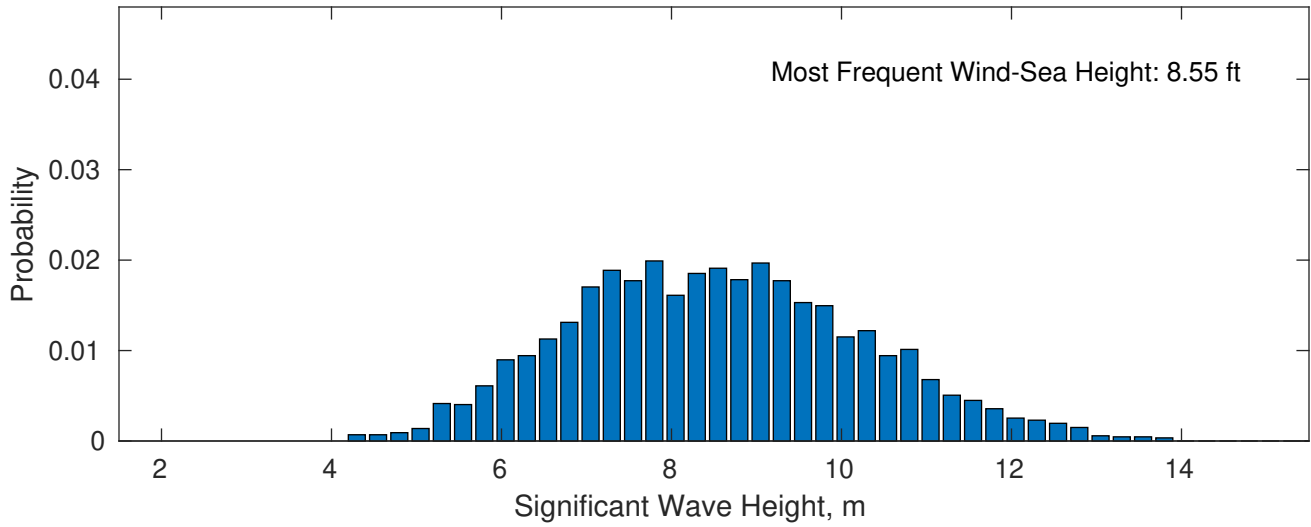
RWE Humboldt Bay OCS-P-0561 August



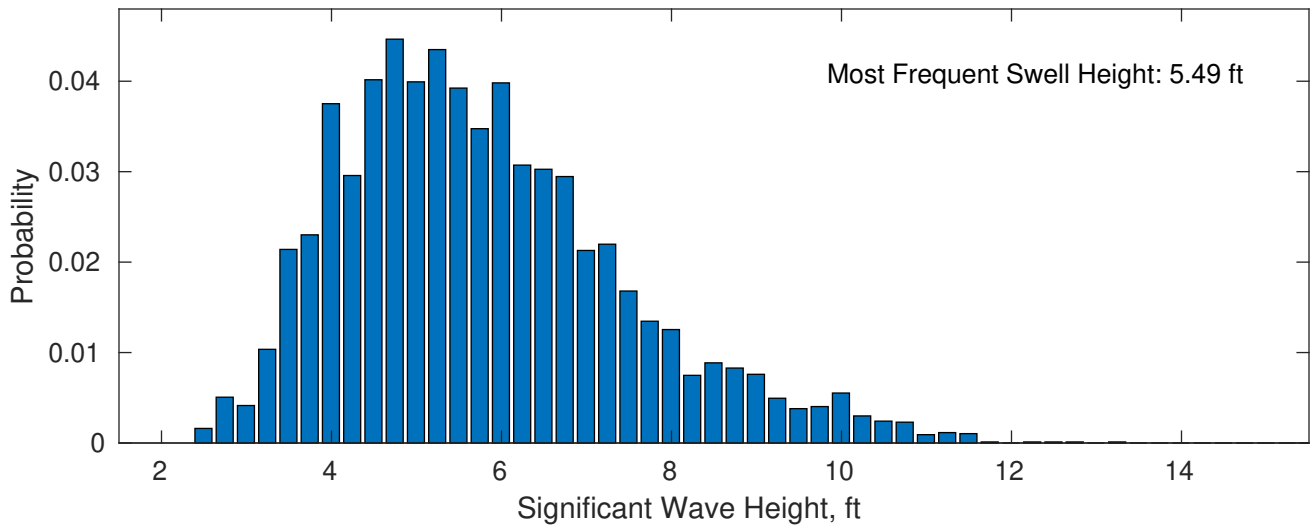
August Wave Height PDF: 1979 - 2015



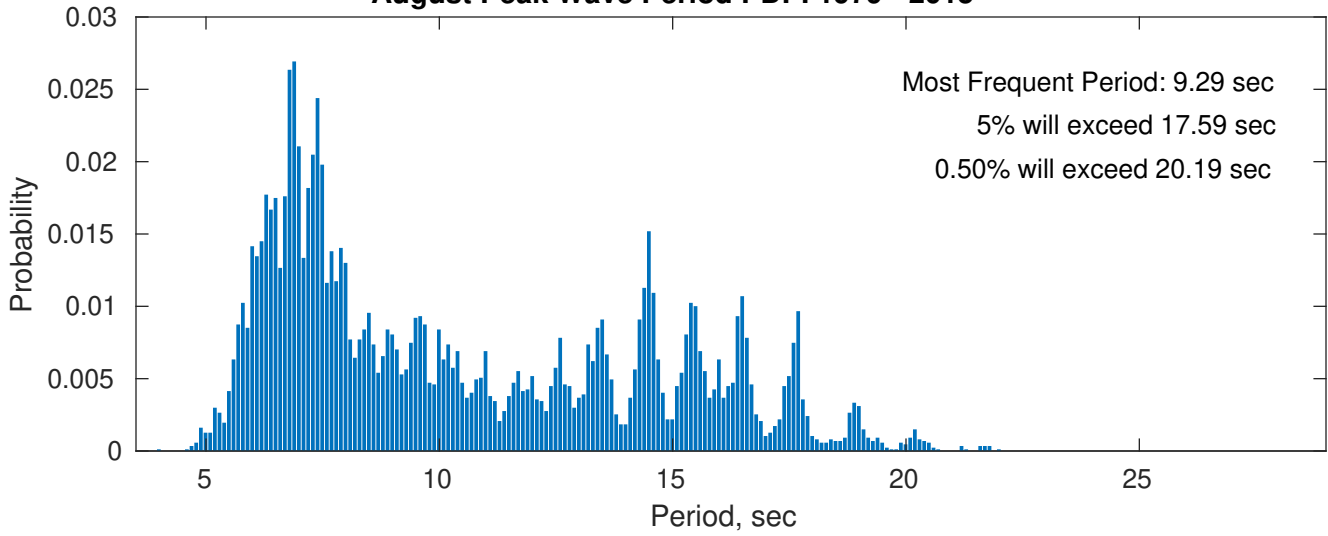
Wind-Sea: 34.68%



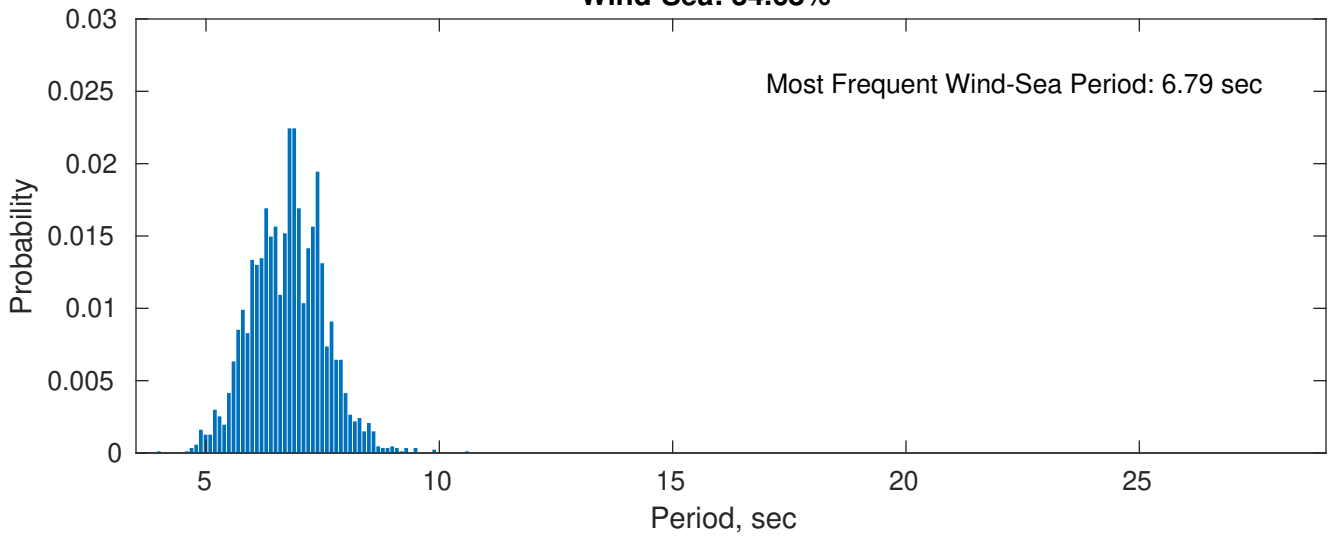
Swell: 65.32%



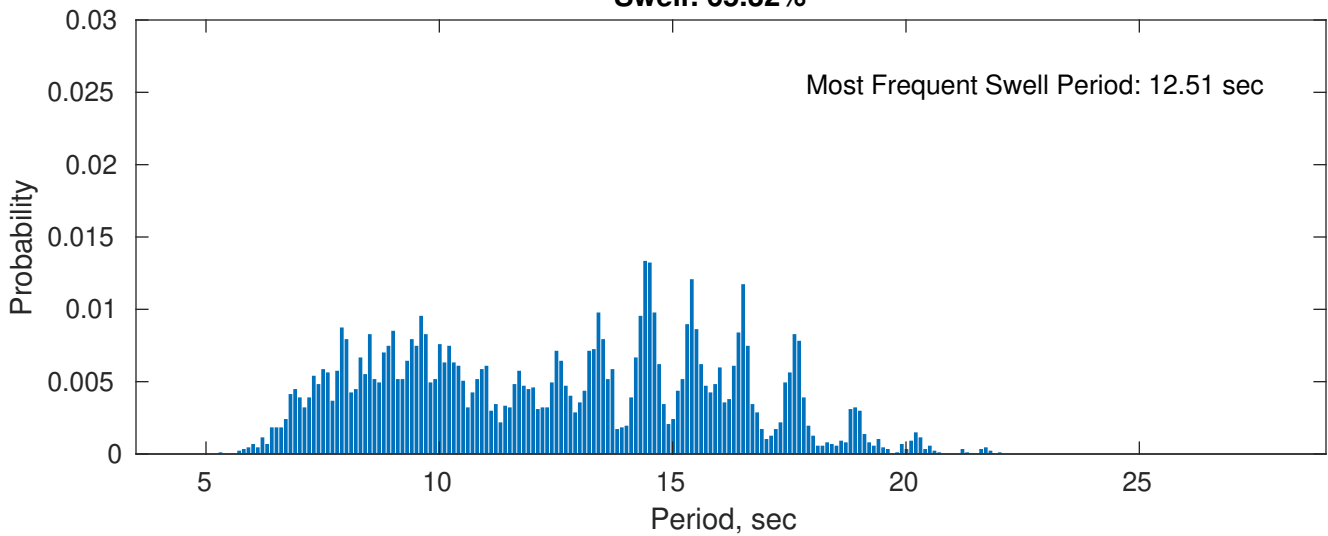
August Peak Wave Period PDF: 1979 - 2015



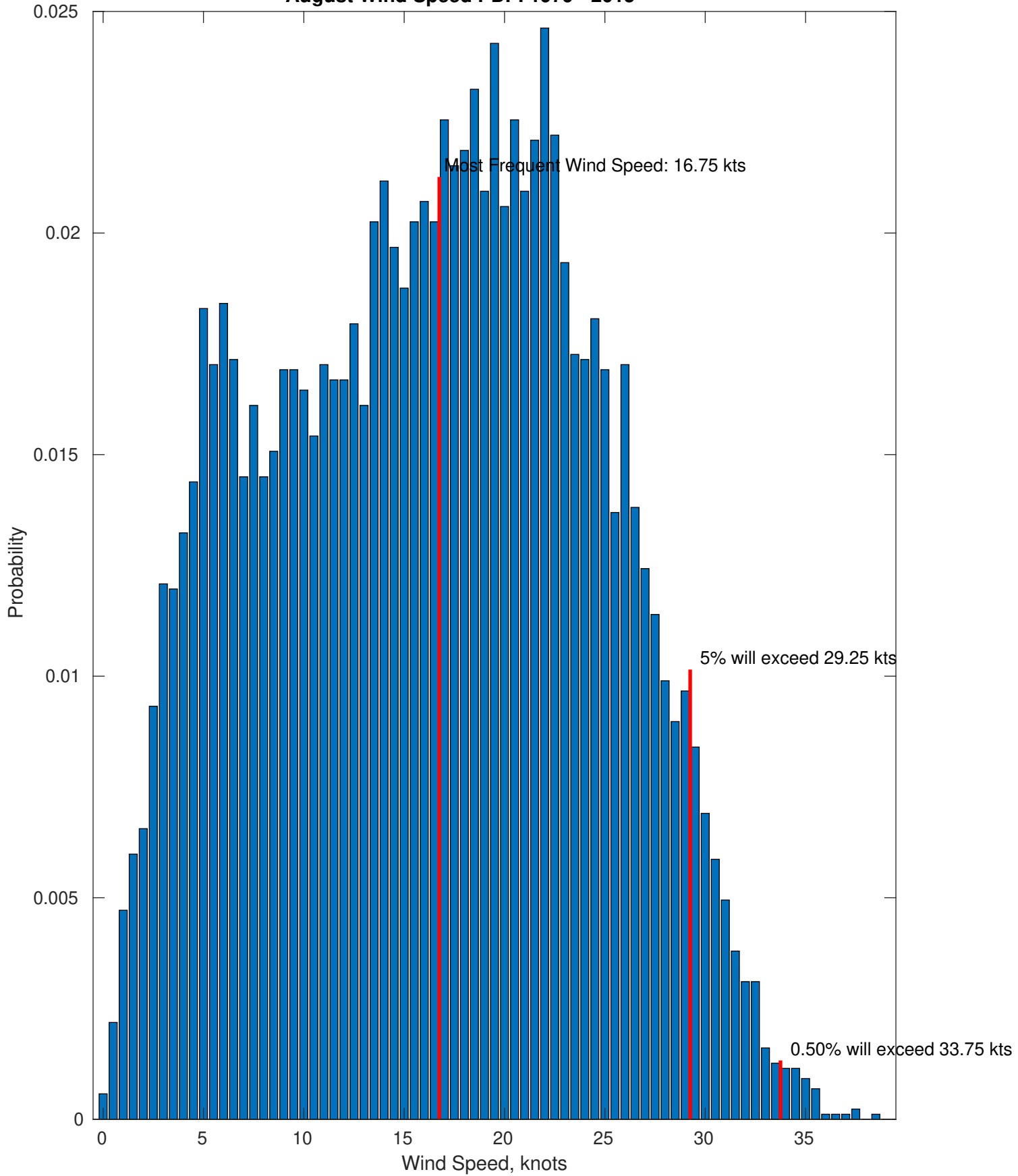
Wind-Sea: 34.68%



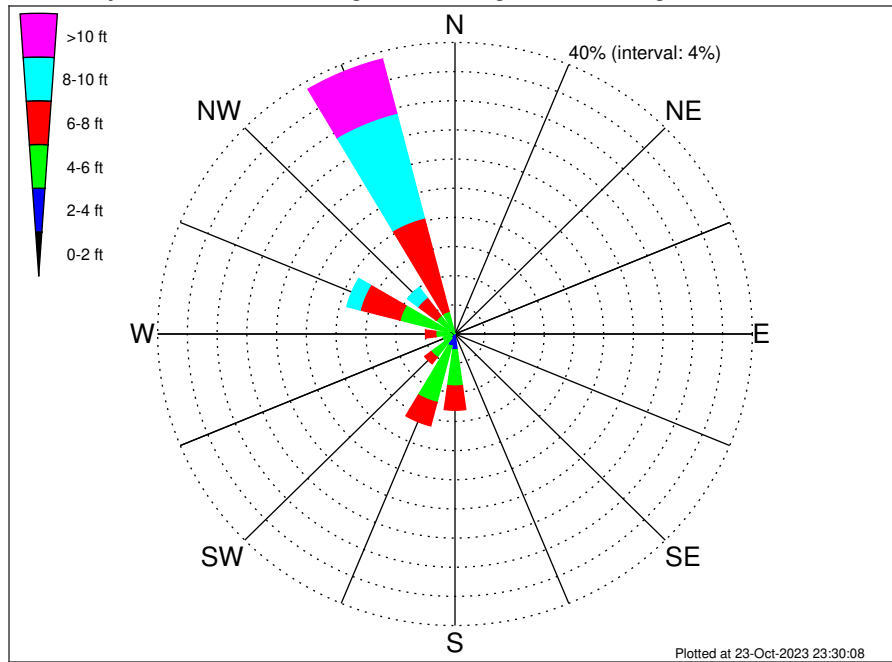
Swell: 65.32%



August Wind Speed PDF: 1979 - 2015



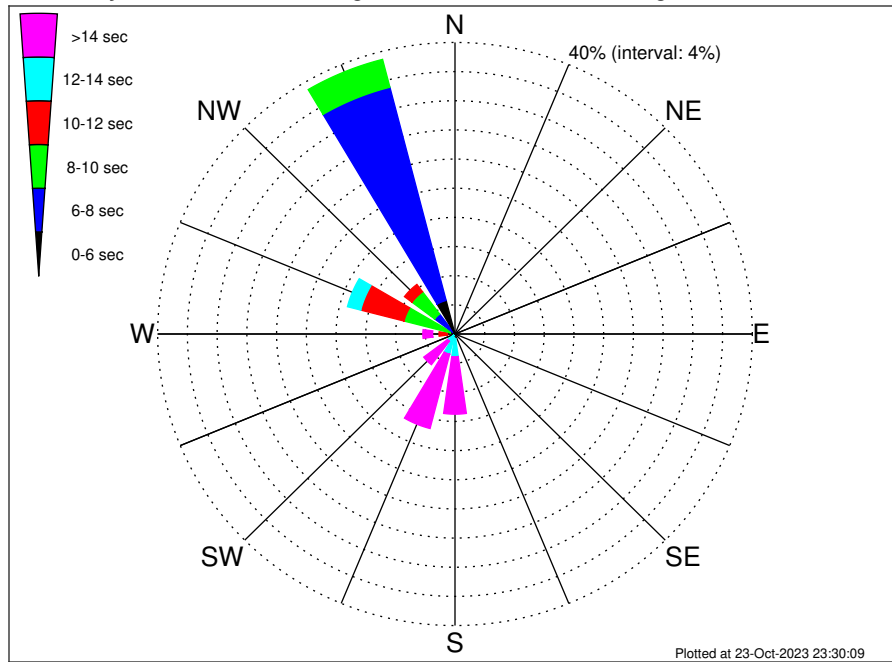
RWE Humboldt Bay OCS-P-0561 Climatological WaveHeight Rose for August: 1979 - 2015



Joint Frequency Distribution Table

	N	NNE	NE	ENE	E	ESE	SE	SSE	S	SSW	SW	WSW	W	WNW	NW	NNW	Total	
calm	•	•	•	•	•	•	•	•	•	•	•	•	•	•	•	•	•	
1 - 2 ft	•	•	•	•	•	•	•	•	•	•	•	•	•	•	•	•	•	
2 - 4 ft	•	•	•	•	•	•	•	•	2.16	1.73	0.74	0.40	0.53	0.78	0.15	0.07	6.56	
4 - 6 ft	0.05	•	•	•	•	•	•	•	4.98	7.97	3.27	1.25	2.07	6.87	2.99	3.13	32.59	
6 - 8 ft	0.12	•	•	•	•	•	•	0.05	3.31	3.33	1.10	0.46	1.37	5.54	3.11	13.26	31.63	
8 - 10 ft	0.08	•	•	•	•	•	•	•	0.48	0.37	0.16	0.05	0.33	1.84	1.76	14.83	19.91	
10 - 12 ft	0.01	•	•	•	•	•	•	•	0.06	•	•	0.06	0.02	0.63	0.82	6.57	8.17	
12 - 14 ft	•	•	•	•	•	•	•	•	•	•	•	•	•	0.02	•	1.09	1.12	
14 - 16 ft	•	•	•	•	•	•	•	•	•	•	•	•	•	•	•	0.02	0.02	
16 - 18 ft	•	•	•	•	•	•	•	•	•	•	•	•	•	•	•	•	•	
> 18 ft	•	•	•	•	•	•	•	•	•	•	•	•	•	•	•	•	•	
Total	0.25	•	•	•	•	•	•	•	0.05	11.00	13.39	5.27	2.22	4.33	15.68	8.83	38.98	100.00

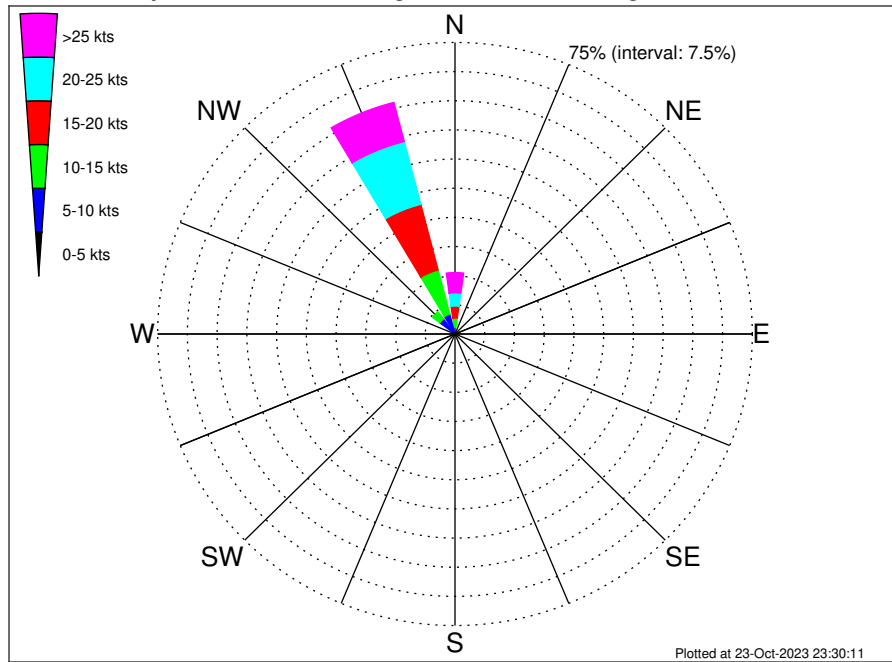
RWE Humboldt Bay OCS-P-0561 Climatological WavePeriod Rose for August: 1979 - 2015



Joint Frequency Distribution Table

	N	NNE	NE	ENE	E	ESE	SE	SSE	S	SSW	SW	WSW	W	WNW	NW	NNW	Total
calm	•	•	•	•	•	•	•	•	•	•	•	•	•	•	•	•	•
1 - 2 sec	•	•	•	•	•	•	•	•	•	•	•	•	•	•	•	•	•
2 - 4 sec	•	•	•	•	•	•	•	•	0.01	•	•	•	•	•	•	•	0.01
4 - 6 sec	0.13	•	•	•	•	•	•	•	0.03	•	•	•	•	•	0.40	4.75	5.32
6 - 8 sec	0.13	•	•	•	•	•	•	•	0.12	0.08	•	•	0.40	0.64	3.03	30.22	34.61
8 - 10 sec	•	•	•	•	•	•	•	•	0.03	•	0.07	0.01	0.62	6.44	3.82	3.95	14.95
10 - 12 sec	•	•	•	•	•	•	•	0.01	0.45	0.39	0.16	0.38	1.13	6.02	1.27	0.06	9.86
12 - 14 sec	•	•	•	•	•	•	•	0.03	2.49	2.39	1.02	0.94	0.86	1.84	0.31	•	9.90
14 - 16 sec	•	•	•	•	•	•	•	•	3.48	5.68	2.01	0.54	1.02	0.45	•	•	13.19
18 - 20 sec	•	•	•	•	•	•	•	•	3.16	3.83	1.54	0.30	0.29	0.26	•	•	9.39
22 - 24 sec	•	•	•	•	•	•	•	•	1.23	1.01	0.46	0.05	•	0.02	•	•	2.77
Total	0.25	•	•	•	•	•	•	0.05	11.00	13.39	5.27	2.22	4.33	15.68	8.83	38.98	100.00

RWE Humboldt Bay OCS-P-0561 Climatological Wind Rose for August: 1979 - 2015



Joint Frequency Distribution Table

	N	NNE	NE	ENE	E	ESE	SE	SSE	S	SSW	SW	WSW	W	WNW	NW	NNW	Total
calm	0.05	•	0.02	0.01	•	0.01	0.01	•	0.05	0.02	•	0.01	0.01	0.01	0.05	0.02	0.28
0 - 5 kts	0.46	0.28	0.18	0.10	0.13	0.09	0.12	0.31	0.43	0.58	0.84	0.85	0.94	0.87	0.90	0.75	7.83
5 - 10 kts	1.31	0.14	0.02	0.01	0.01	•	0.09	0.32	0.83	1.15	0.97	0.76	0.93	1.58	3.90	4.46	16.49
10 - 15 kts	2.31	0.01	•	•	•	•	•	0.23	0.54	0.40	0.08	0.02	0.02	0.08	2.29	11.75	17.74
15 - 20 kts	3.07	•	•	•	•	•	•	0.05	0.49	0.15	•	•	•	•	0.21	17.47	21.44
20 - 25 kts	3.41	•	•	•	•	•	0.02	0.10	0.25	0.01	•	•	•	•	•	16.69	20.48
25 - 30 kts	3.86	•	•	•	•	•	0.01	0.05	0.03	•	•	•	•	•	•	8.27	12.22
30 - 35 kts	1.24	•	•	•	•	•	0.01	0.01	0.02	•	•	•	•	•	•	2.00	3.29
35 - 40 kts	0.09	•	•	•	•	•	0.01	•	•	•	•	•	•	•	•	0.13	0.23
40 - 45 kts	•	•	•	•	•	•	•	•	•	•	•	•	•	•	•	•	•
45 - 50 kts	•	•	•	•	•	•	•	•	•	•	•	•	•	•	•	•	•
Total	15.80	0.43	0.23	0.13	0.14	0.10	0.28	1.07	2.65	2.31	1.89	1.65	1.91	2.54	7.34	61.54	100.00