

RWE Humboldt Bay OCS-P-0561 - February

Latitude: 41.00 N Longitude: 125.00 W

Weather Days

Wave Height > 6.0 ft Mean: 22.7 days Range: 20.8 - 24.5 days p50:29 days p75:28 days p90:25 days

Wave Height > 7.0 ft Mean: 20.1 days Range: 17.2 - 22.9 days p50:27 days p75:24.5 days p90:22 days

Wave Height > 8.0 ft Mean: 16.6 days Range: 12.5 - 20.8 days p50:25 days p75:21.5 days p90:19 days

Wind Speed > 10.0 knots Mean: 20.9 days Range: 17.9 - 23.9 days p50:21.5 days p75:20.5 days p90:16.5 days

Wind Speed > 15.0 knots Mean: 14.8 days Range: 11.3 - 18.4 days p50:15.5 days p75:12 days p90:11 days

Wind Speed > 20.0 knots Mean: 9.1 days Range: 5.6 - 12.5 days p50:9.5 days p75:6 days p90:5 days

Working Window

Wave Height < 6.0 ft
A 1 day or longer window will statistically occur 0.6 times per month
A 2 day or longer window will statistically occur 0.1 times per month
A 3 day or longer window will statistically occur 0.1 times per month

Wave Height < 7.0 ft
A 1 day or longer window will statistically occur 1.1 times per month
A 2 day or longer window will statistically occur 0.5 times per month
A 3 day or longer window will statistically occur 0.1 times per month

Wave Height < 8.0 ft
A 1 day or longer window will statistically occur 1.9 times per month
A 2 day or longer window will statistically occur 0.9 times per month
A 3 day or longer window will statistically occur 0.4 times per month

Waves

Mean Height: 10 - 12 ft

The wave heights will occasionally reach > 18 ft, but rarely higher.

Mean Period: 12 - 14 sec

The wave periods will occasionally reach 22 - 24 sec, but rarely longer.

Principle Direction, from: WNW

WindSea/Swell: 5% / 95%

Winds

Mean Speed: 10 - 15 kts

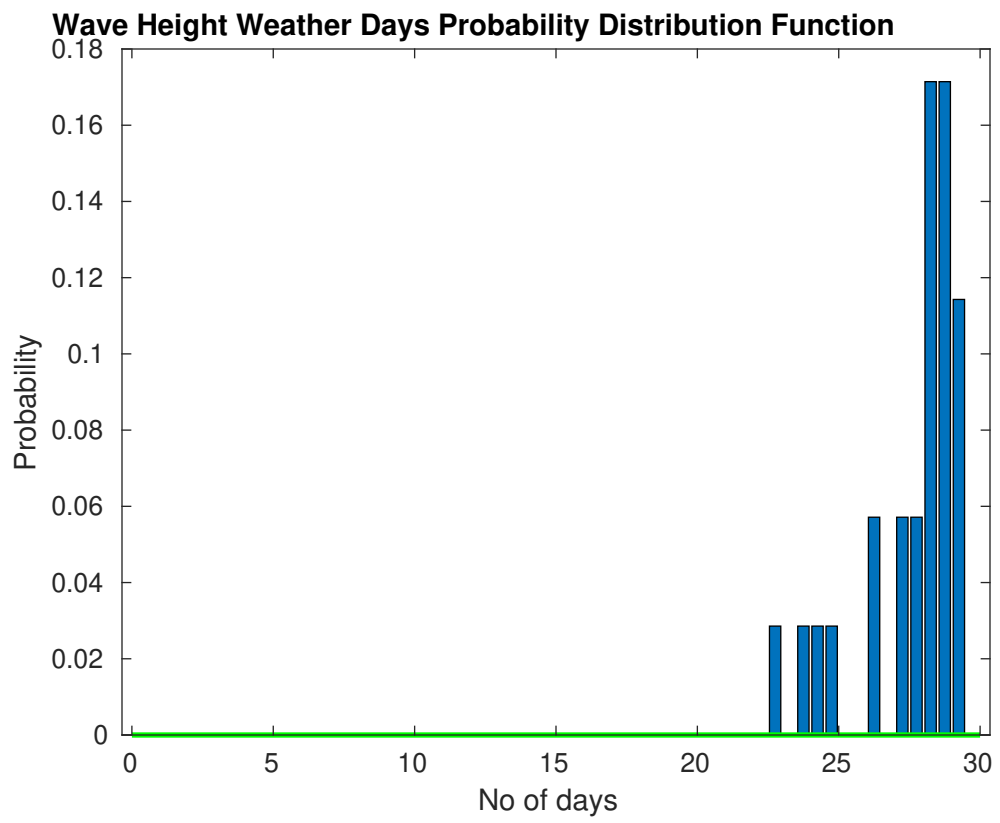
The winds will occasionally reach 40 - 45 kts, but rarely greater.

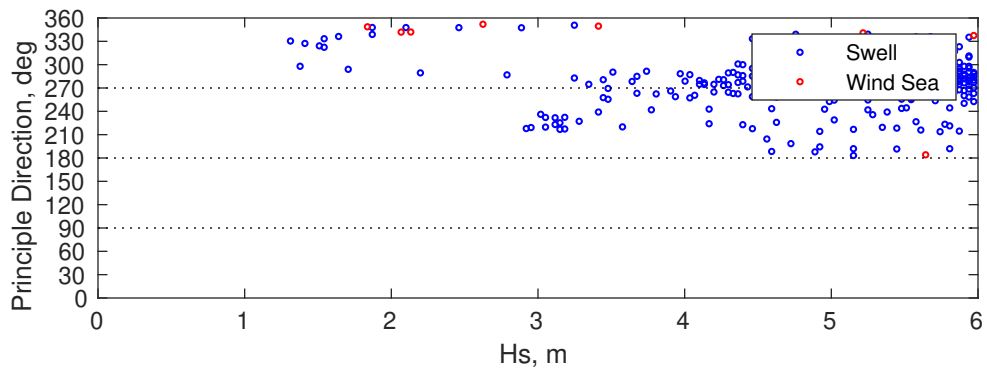
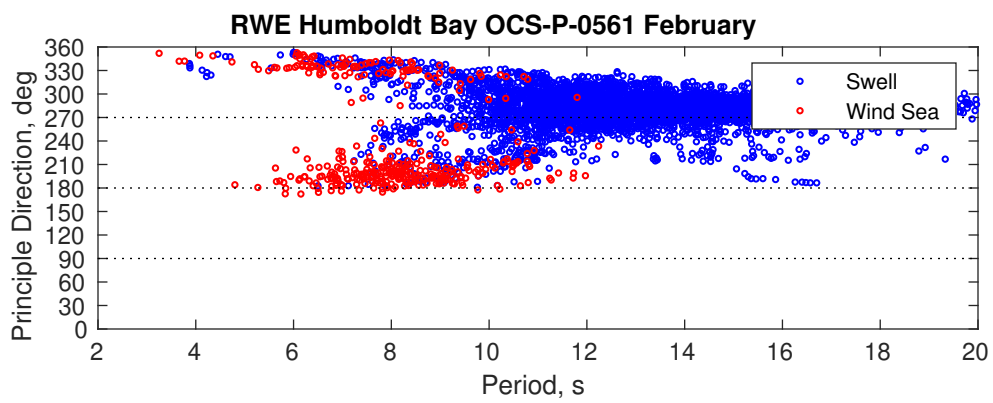
Principle Direction, from: S

Severe Storms

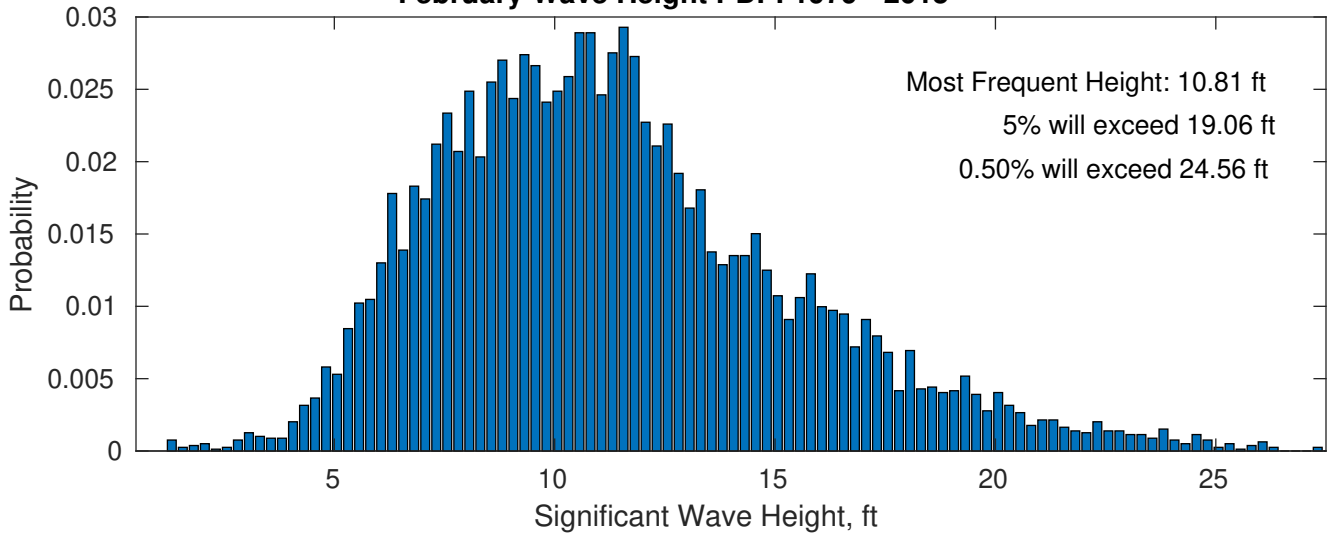
There is a 43 % chance of a storm occurring in the month with winds peaking above 34 kts.

There is a 37 % chance of a storm occurring in the month with waves exceeding 3 m (10 ft) above the mean wave height.

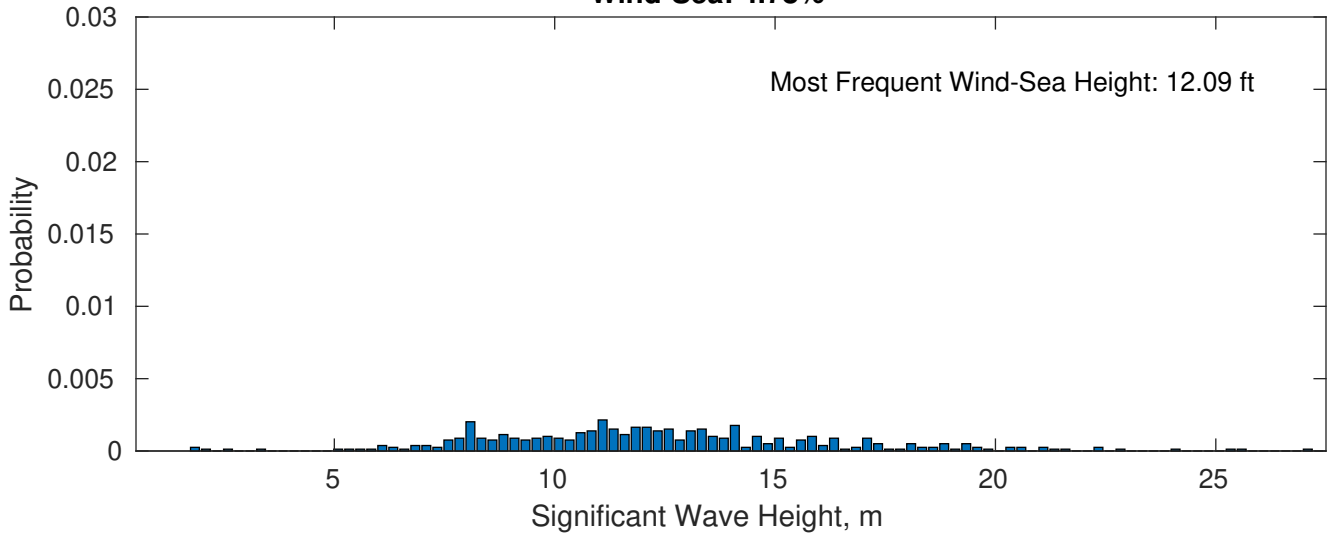




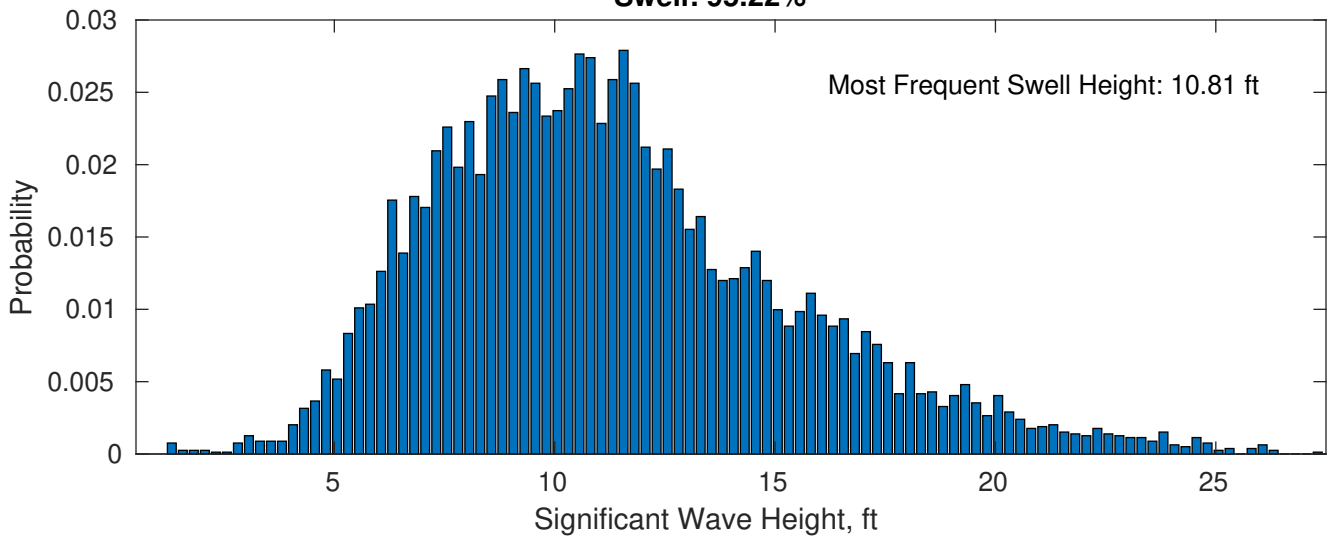
February Wave Height PDF: 1979 - 2015



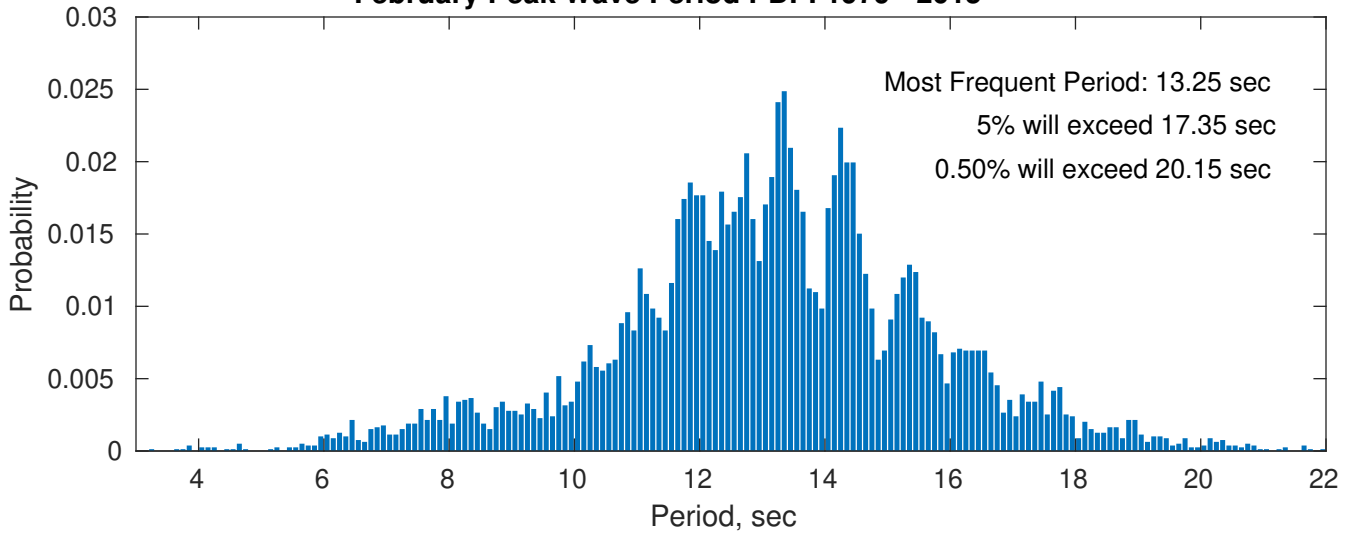
Wind-Sea: 4.78%



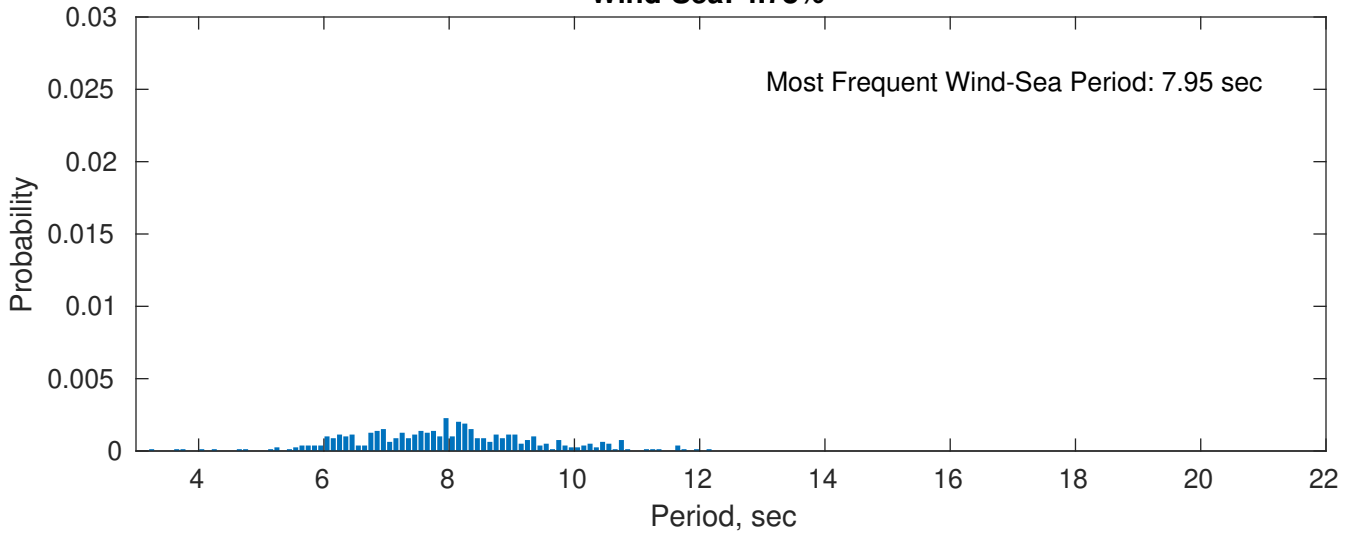
Swell: 95.22%



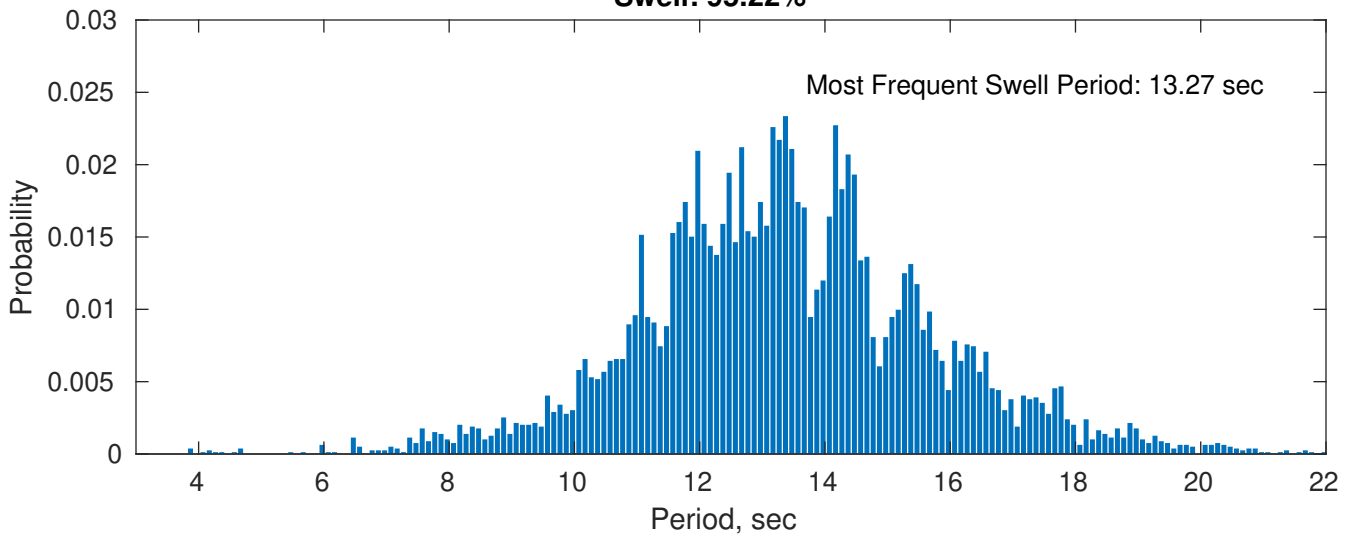
February Peak Wave Period PDF: 1979 - 2015



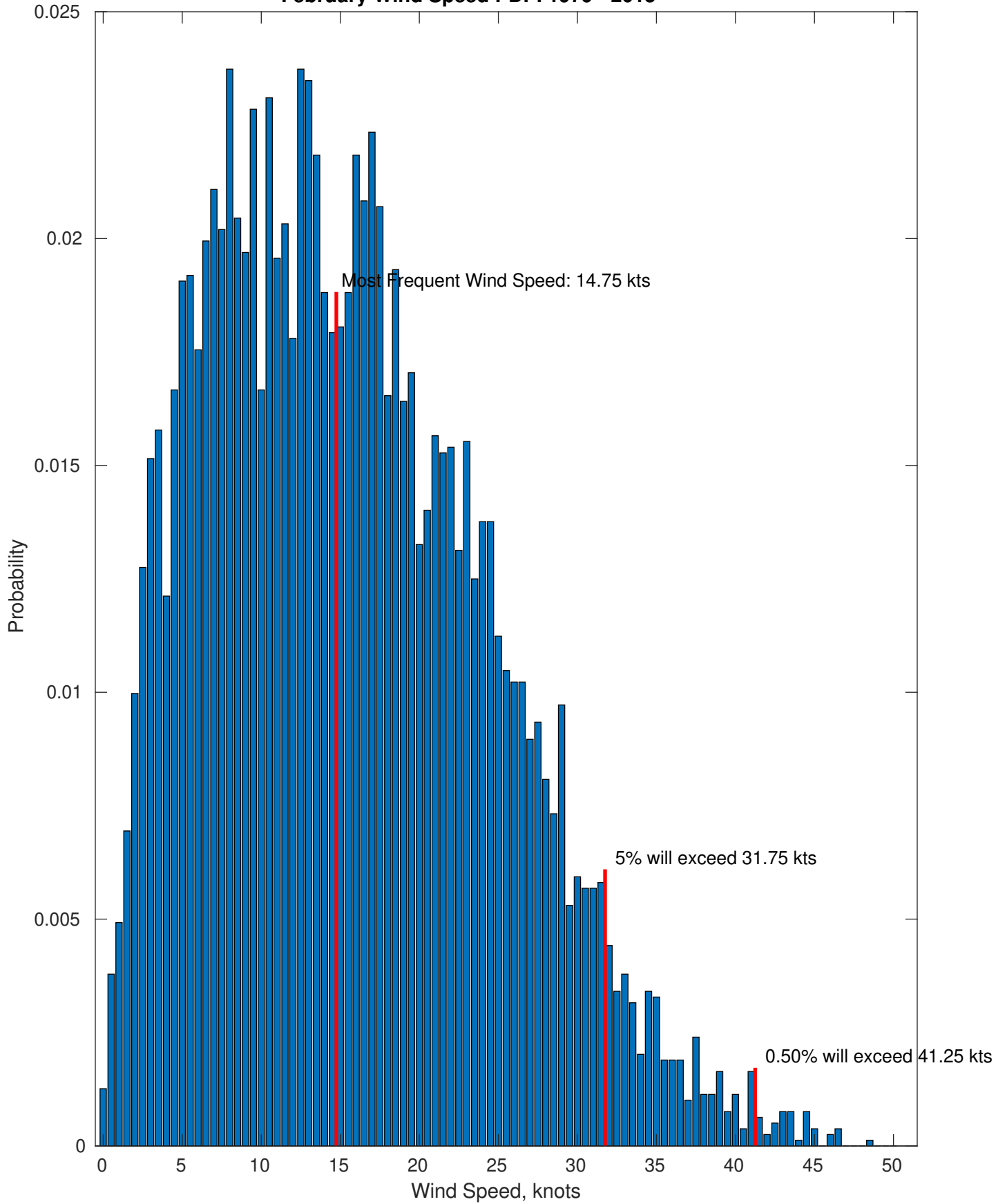
Wind-Sea: 4.78%



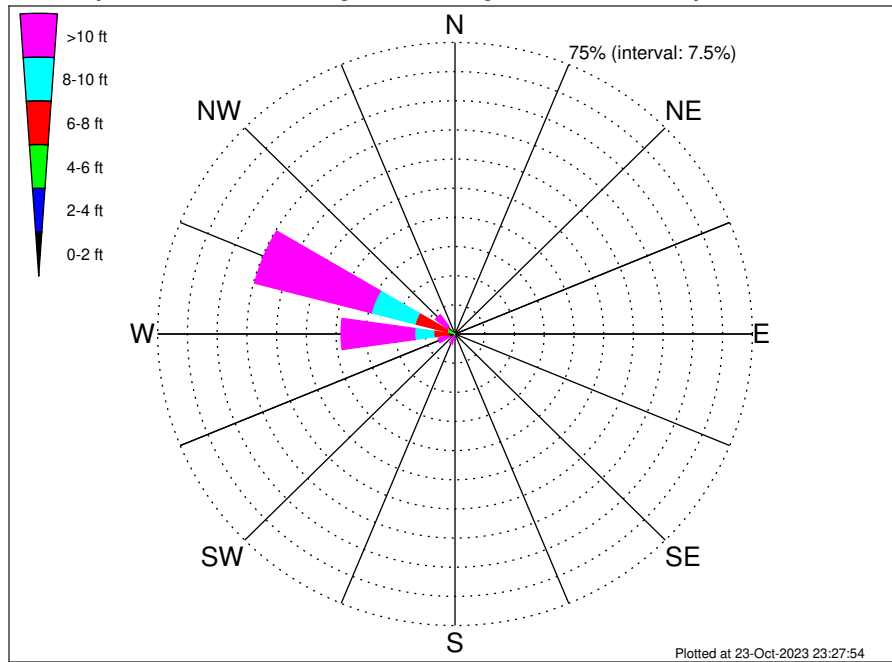
Swell: 95.22%



February Wind Speed PDF: 1979 - 2015



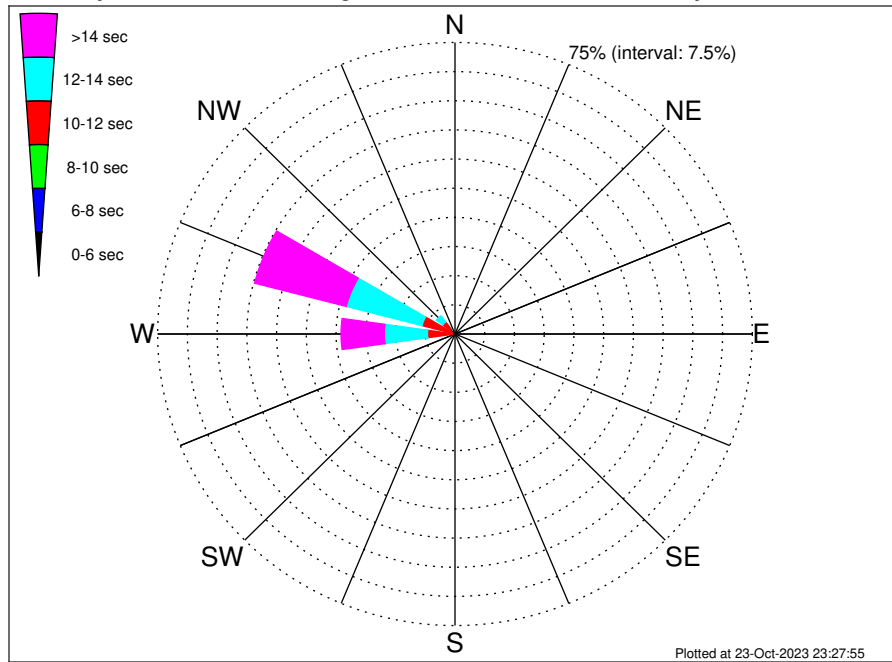
RWE Humboldt Bay OCS-P-0561 Climatological WaveHeight Rose for February: 1979 - 2015



Joint Frequency Distribution Table

	N	NNE	NE	ENE	E	ESE	SE	SSE	S	SSW	SW	WSW	W	WNW	NW	NNW	Total
calm	•	•	•	•	•	•	•	•	•	•	•	•	•	•	•	•	•
1 - 2 ft	•	•	•	•	•	•	•	•	•	•	•	•	•	0.03	0.03	0.09	0.14
2 - 4 ft	0.04	•	•	•	•	•	•	•	•	•	0.18	0.05	0.10	0.09	•	0.06	0.52
4 - 6 ft	•	•	•	•	•	•	•	•	0.05	0.08	0.20	0.25	1.63	1.94	0.32	0.16	4.63
6 - 8 ft	0.06	•	•	•	•	•	•	•	0.11	0.01	0.18	0.53	3.65	8.34	0.95	0.44	14.28
8 - 10 ft	0.09	•	•	•	•	•	•	•	0.25	0.28	0.40	0.69	4.82	11.43	1.24	0.68	19.88
10 - 12 ft	•	•	•	•	•	•	•	•	0.29	0.59	0.29	0.57	5.33	13.03	1.15	0.47	21.71
12 - 14 ft	•	•	•	•	•	•	•	•	0.30	0.71	0.24	0.49	4.31	7.55	1.19	0.28	15.06
14 - 16 ft	•	•	•	•	•	•	•	•	0.11	0.47	0.21	0.67	3.32	4.41	0.64	0.05	9.89
16 - 18 ft	•	•	•	•	•	•	•	•	0.08	0.23	0.27	0.58	2.22	2.85	0.40	0.03	6.65
> 18 ft	•	•	•	•	•	•	•	•	0.06	0.32	0.09	0.56	3.37	2.55	0.29	•	7.23
Total	0.19	•	•	•	•	•	•	•	1.26	2.68	2.06	4.39	28.75	52.22	6.20	2.26	100.00

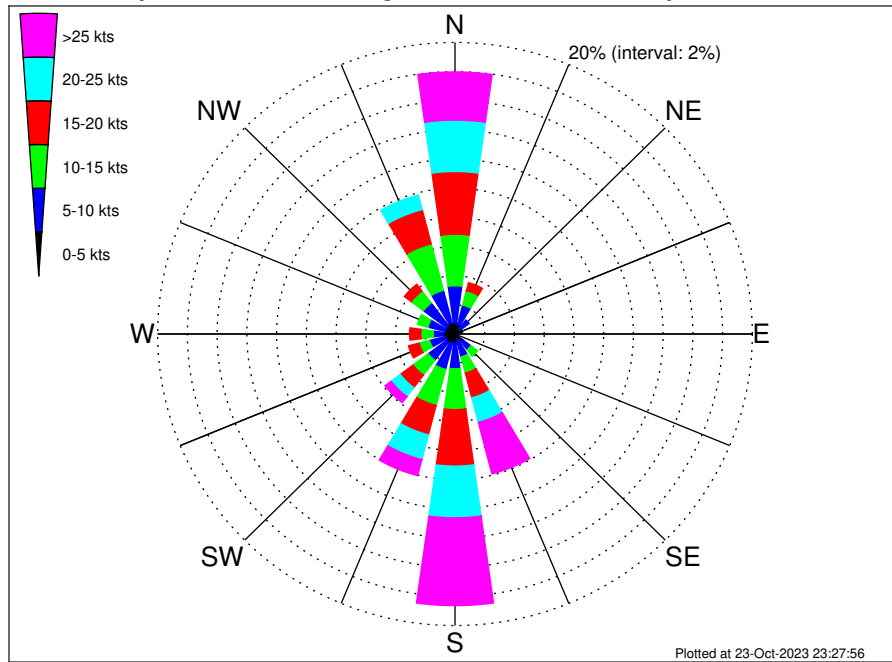
RWE Humboldt Bay OCS-P-0561 Climatological WavePeriod Rose for February: 1979 - 2015



Joint Frequency Distribution Table

	N	NNE	NE	ENE	E	ESE	SE	SSE	S	SSW	SW	WSW	W	WNW	NW	NNW	Total
calm	•	•	•	•	•	•	•	•	•	•	•	•	•	•	•	•	•
1 - 2 sec	•	•	•	•	•	•	•	•	•	•	•	•	•	•	•	•	•
2 - 4 sec	0.01	•	•	•	•	•	•	•	•	•	•	•	•	•	•	0.06	0.08
4 - 6 sec	0.08	•	•	•	•	•	•	•	0.09	0.03	•	•	•	•	0.03	0.20	0.42
6 - 8 sec	0.10	•	•	•	•	•	•	•	0.49	0.81	0.21	0.13	0.01	0.05	0.34	1.19	3.33
8 - 10 sec	•	•	•	•	•	•	•	•	0.50	1.40	0.37	0.58	0.67	0.72	1.09	0.63	5.96
10 - 12 sec	•	•	•	•	•	•	•	•	0.10	0.37	0.87	1.49	6.26	7.83	2.42	0.15	19.49
12 - 14 sec	•	•	•	•	•	•	•	•	•	•	0.16	1.29	10.87	19.73	2.01	0.03	34.09
14 - 16 sec	•	•	•	•	•	•	•	•	0.01	0.08	0.34	0.67	7.08	16.01	0.29	•	24.48
18 - 20 sec	•	•	•	•	•	•	•	•	0.06	•	0.06	0.20	3.07	5.85	0.03	•	9.27
22 - 24 sec	•	•	•	•	•	•	•	•	•	•	0.04	0.04	0.78	2.03	•	•	2.89
Total	0.19	•	•	•	•	•	•	•	1.26	2.68	2.06	4.39	28.75	52.22	6.20	2.26	100.00

RWE Humboldt Bay OCS-P-0561 Climatological Wind Rose for February: 1979 - 2015



Joint Frequency Distribution Table

	N	NNE	NE	ENE	E	ESE	SE	SSE	S	SSW	SW	WSW	W	WNW	NW	NNW	Total
calm	0.01	0.03	0.04	0.03	0.04	0.01	0.03	0.04	•	0.04	0.04	0.04	0.06	0.05	0.04	0.03	0.50
0 - 5 kts	0.72	0.66	0.40	0.50	0.45	0.38	0.63	0.29	0.66	0.58	0.69	0.64	0.73	0.66	0.66	0.77	9.43
5 - 10 kts	2.58	1.38	0.76	0.42	0.44	0.47	0.69	1.30	1.73	1.89	1.53	1.09	0.67	1.17	1.97	2.30	20.38
10 - 15 kts	3.53	1.01	0.25	0.19	0.09	0.32	0.56	1.14	2.80	2.55	1.28	0.73	0.83	0.73	1.02	3.30	20.33
15 - 20 kts	4.31	0.57	0.09	0.05	0.06	0.10	0.25	1.75	3.88	2.08	1.07	0.73	0.76	0.48	0.58	2.42	19.19
20 - 25 kts	3.52	0.34	0.04	0.01	0.03	0.08	0.34	1.74	3.55	1.75	0.77	0.48	0.24	0.10	0.20	1.04	14.23
25 - 30 kts	2.49	0.14	•	•	•	0.01	0.23	1.45	3.04	0.73	0.38	0.11	0.08	0.06	0.06	0.30	9.09
30 - 35 kts	0.62	•	•	•	•	•	0.04	1.21	1.88	0.25	0.11	0.03	0.03	0.01	0.03	0.13	4.33
35 - 40 kts	0.20	•	•	•	•	•	0.03	0.50	0.82	0.11	0.01	•	•	•	0.01	0.01	1.70
40 - 45 kts	•	•	•	•	•	•	0.01	0.39	0.24	0.04	0.01	•	•	•	•	•	0.69
45 - 50 kts	•	•	•	•	•	•	•	0.09	0.04	•	•	•	•	•	•	•	0.13
Total	17.98	4.12	1.58	1.20	1.11	1.36	2.80	9.91	18.63	10.04	5.90	3.85	3.40	3.27	4.57	10.29	100.00