

## RWE Humboldt Bay OCS-P-0561 - June

Latitude: 41.00 N Longitude: 125.00 W

### Weather Days

Wave Height > 6.0 ft Mean: 17.4 days Range: 13.7 - 21.1 days p50:22 days p75:19.5 days p90:17 days

Wave Height > 7.0 ft Mean: 14.3 days Range: 11.0 - 17.7 days p50:16.5 days p75:15 days p90:12.5 days

Wave Height > 8.0 ft Mean: 10.8 days Range: 7.8 - 13.8 days p50:12.5 days p75:10.5 days p90:9.5 days

Wind Speed > 10.0 knots Mean: 23.8 days Range: 21.4 - 26.1 days p50:25 days p75:23 days p90:21.5 days

Wind Speed > 15.0 knots Mean: 18.6 days Range: 15.8 - 21.4 days p50:19.5 days p75:17 days p90:15.5 days

Wind Speed > 20.0 knots Mean: 13.0 days Range: 10.3 - 15.7 days p50:13.5 days p75:11.5 days p90:10 days

### Working Window

Wave Height < 6.0 ft  
A 1 day or longer window will statistically occur 2.6 times per month  
A 2 day or longer window will statistically occur 1.5 times per month  
A 3 day or longer window will statistically occur 0.8 times per month

Wave Height < 7.0 ft  
A 1 day or longer window will statistically occur 3.7 times per month  
A 2 day or longer window will statistically occur 2.1 times per month  
A 3 day or longer window will statistically occur 1.4 times per month

Wave Height < 8.0 ft  
A 1 day or longer window will statistically occur 4.3 times per month  
A 2 day or longer window will statistically occur 2.7 times per month  
A 3 day or longer window will statistically occur 2.0 times per month

### Waves

Mean Height: 6 - 8 ft

The wave heights will occasionally reach 14 - 16 ft, but rarely higher.

Mean Period: 8 - 10 sec

The wave periods will occasionally reach 22 - 24 sec, but rarely longer.

Principle Direction, from: NNW

WindSea/Swell: 34% / 66%

### Winds

Mean Speed: 15 - 20 kts

The winds will occasionally reach 35 - 40 kts, but rarely greater.

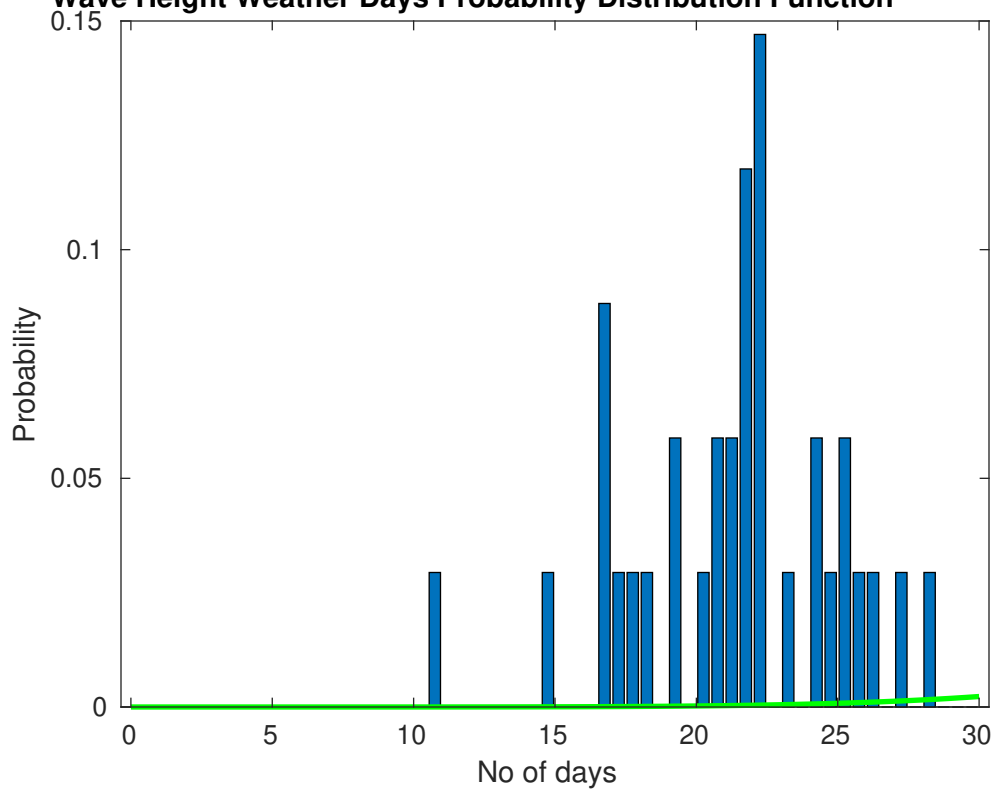
Principle Direction, from: NNW

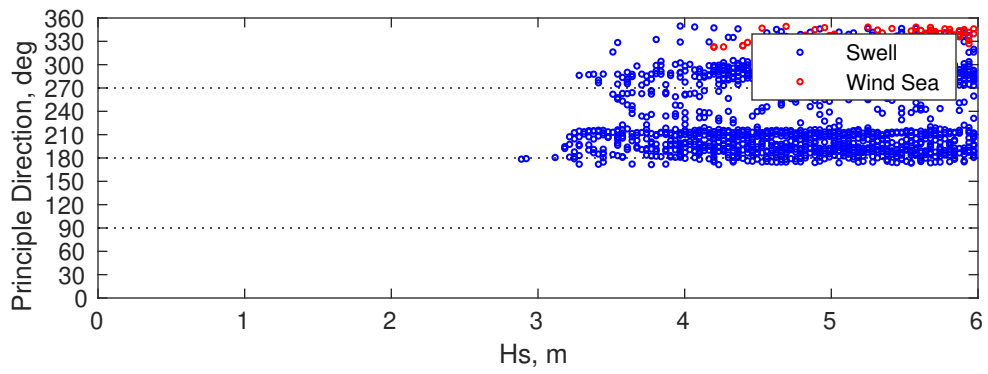
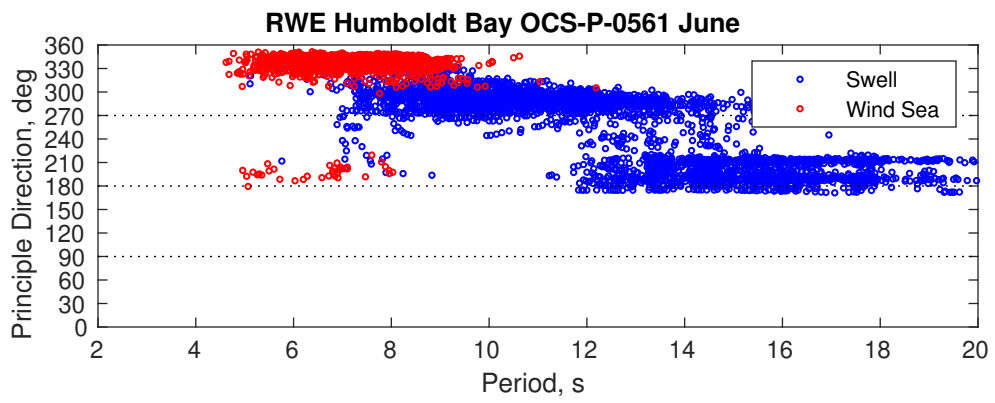
### Severe Storms

There is a 47 % chance of a storm occurring in the month with winds peaking above 34 kts.

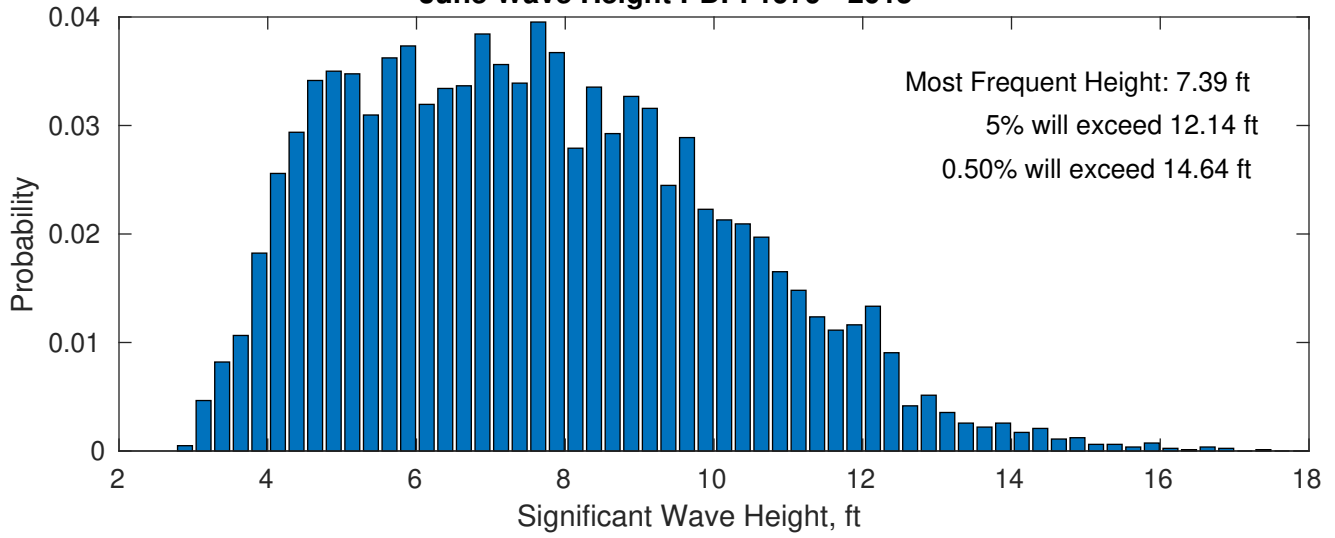
There is little chance of a storm occurring in the month with waves peaking at 4m (13 ft) or greater.

**Wave Height Weather Days Probability Distribution Function**

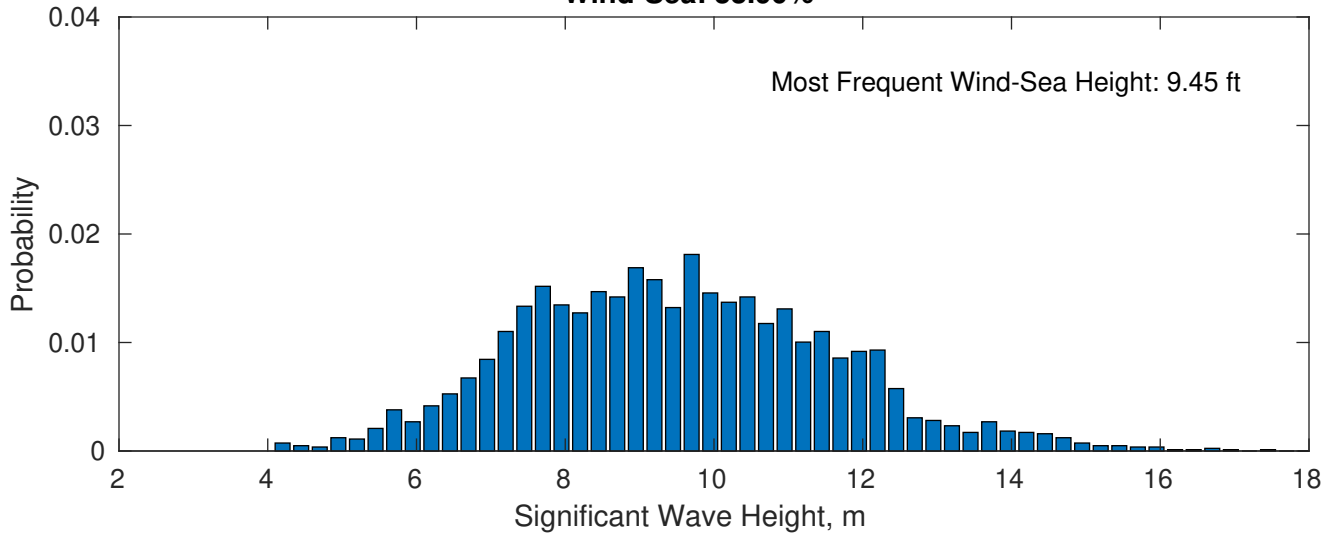




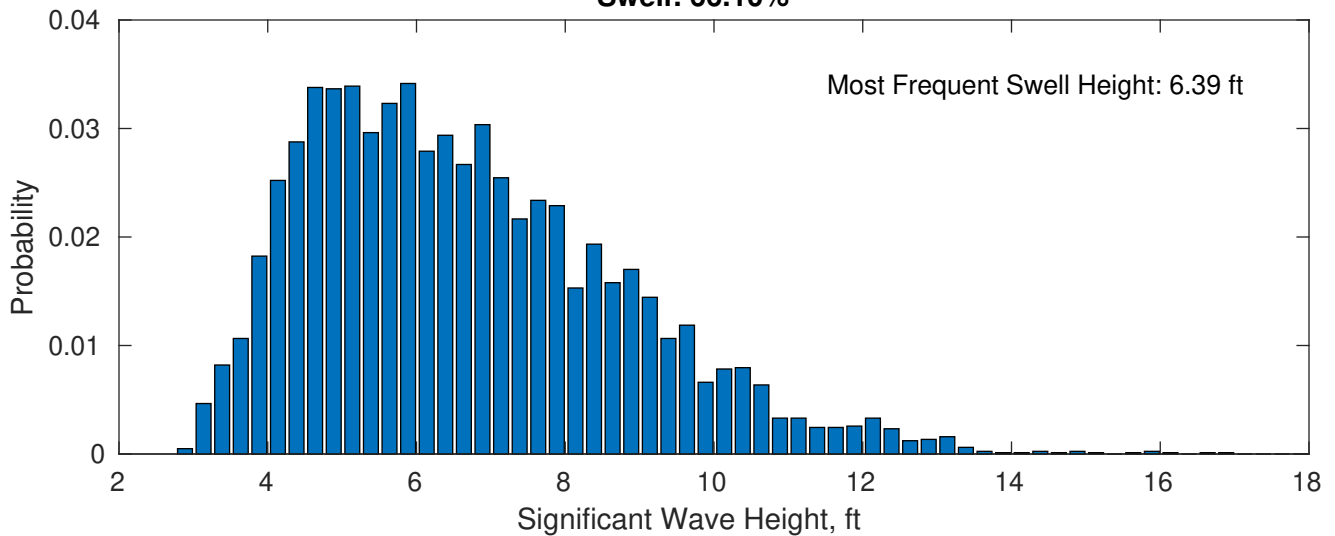
**June Wave Height PDF: 1979 - 2015**



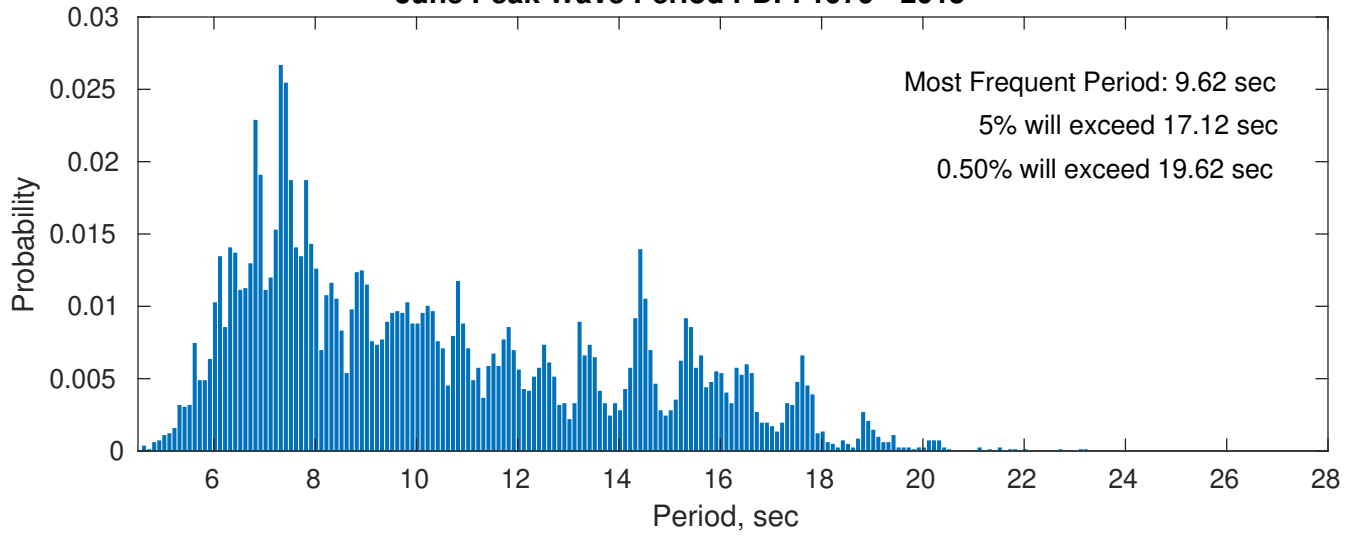
**Wind-Sea: 33.90%**



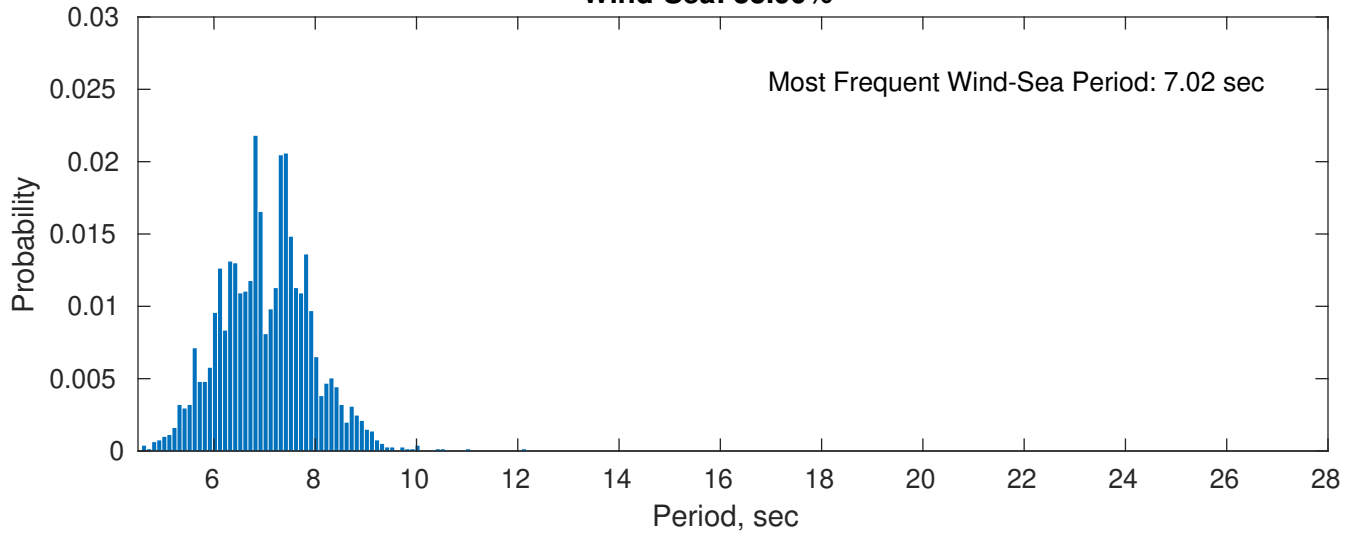
**Swell: 66.10%**



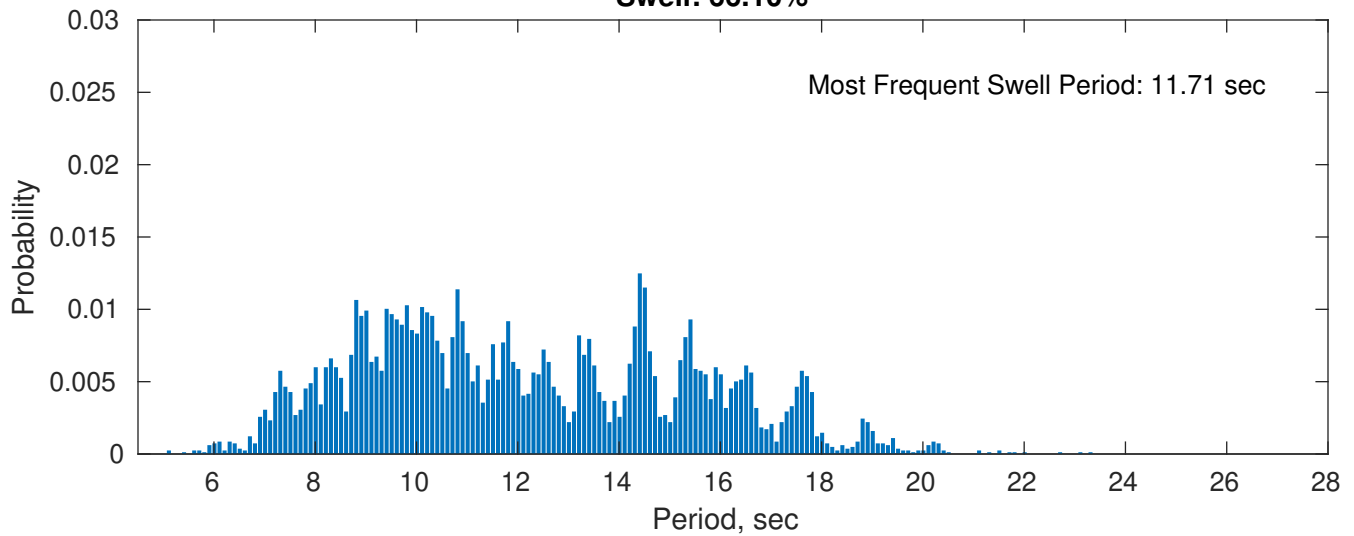
### June Peak Wave Period PDF: 1979 - 2015



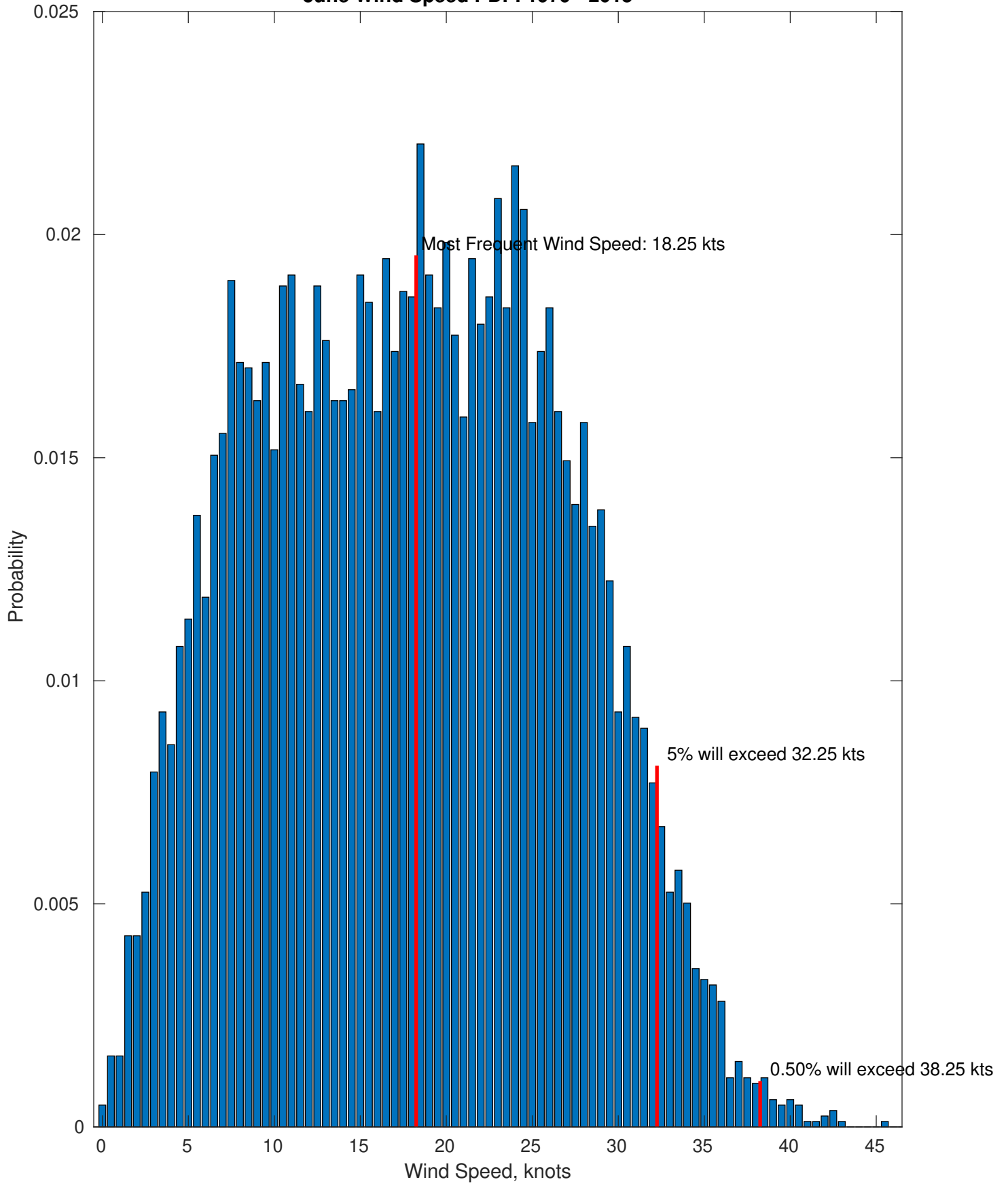
### Wind-Sea: 33.90%



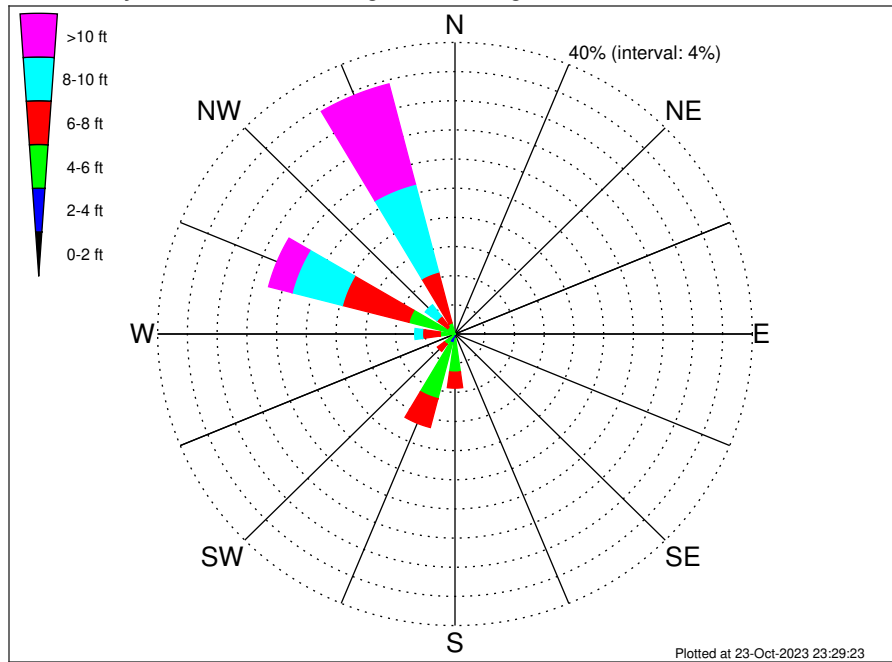
### Swell: 66.10%



June Wind Speed PDF: 1979 - 2015



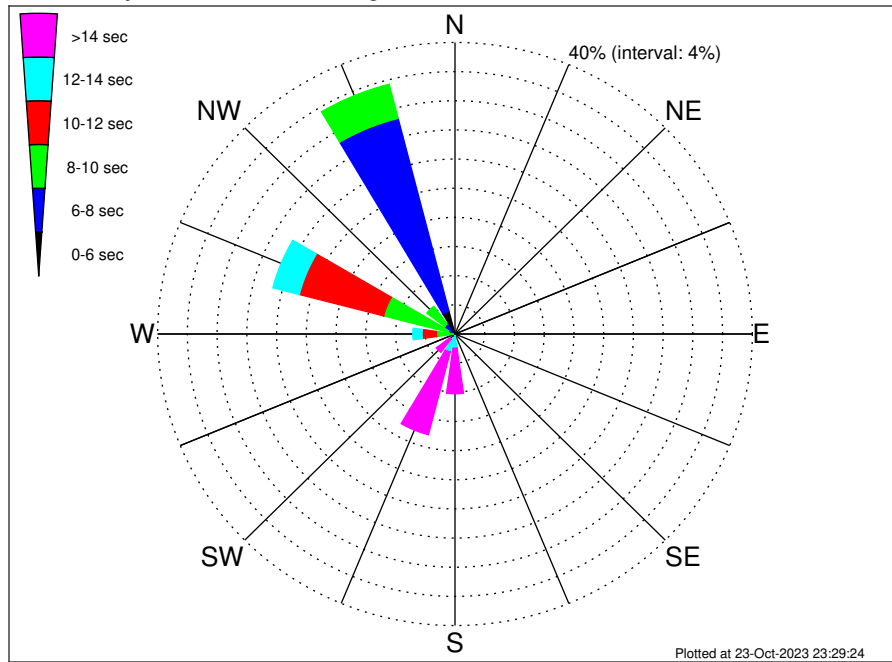
RWE Humboldt Bay OCS-P-0561 Climatological WaveHeight Rose for June: 1979 - 2015



Joint Frequency Distribution Table

	N	NNE	NE	ENE	E	ESE	SE	SSE	S	SSW	SW	WSW	W	WNW	NW	NNW	Total
calm	.	.	.	.	.	.	.	.	.	.	.	.	.	.	.	.	.
1 - 2 ft	.	.	.	.	.	.	.	.	.	.	.	.	.	.	.	.	.
2 - 4 ft	0.01	.	.	.	.	.	.	.	0.64	1.25	0.32	0.15	0.23	0.37	0.02	0.04	3.02
4 - 6 ft	0.01	.	.	.	.	.	.	.	4.60	7.92	1.46	0.54	1.76	6.06	1.22	1.53	25.10
6 - 8 ft	0.06	.	.	.	.	.	.	.	2.19	4.09	1.20	0.17	2.39	9.23	1.80	7.22	28.35
8 - 10 ft	0.11	.	.	.	.	.	.	.	0.56	0.82	0.15	0.15	1.04	6.99	1.97	12.45	24.24
10 - 12 ft	0.01	.	.	.	.	.	.	.	0.21	0.16	.	.	0.47	2.44	0.48	9.61	13.37
12 - 14 ft	0.01	.	.	.	.	.	.	.	.	0.04	0.02	0.01	0.21	0.76	0.12	3.66	4.83
14 - 16 ft	.	.	.	.	.	.	.	.	.	.	.	.	0.04	0.06	.	0.84	0.94
16 - 18 ft	.	.	.	.	.	.	.	.	.	.	.	.	0.04	0.01	.	0.10	0.15
> 18 ft	.	.	.	.	.	.	.	.	.	.	.	.	.	.	.	.	.
Total	0.22	.	.	.	.	.	.	.	8.20	14.27	3.15	1.02	6.17	25.91	5.62	35.45	100.00

RWE Humboldt Bay OCS-P-0561 Climatological WavePeriod Rose for June: 1979 - 2015

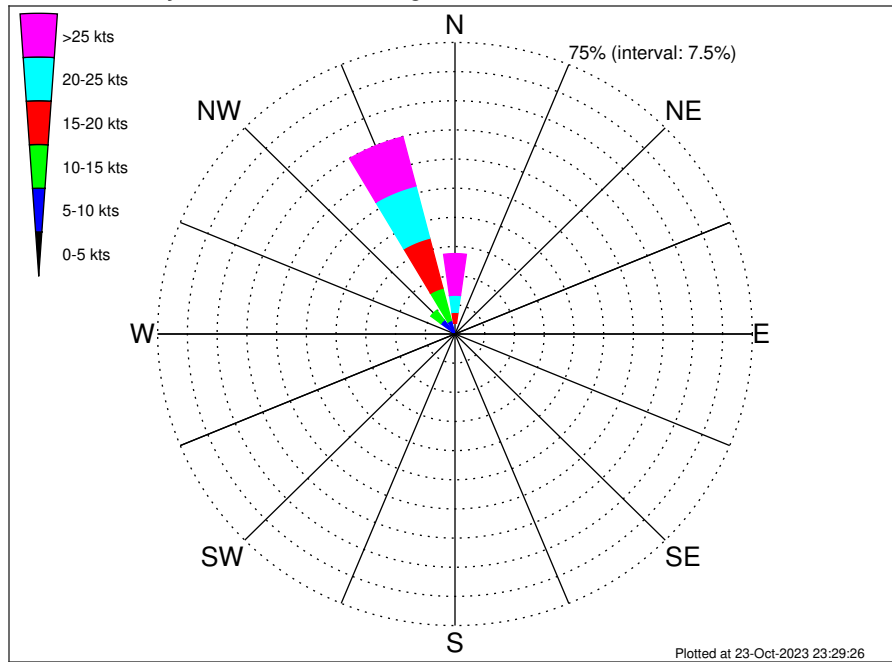


Joint Frequency Distribution Table

	N	NNE	NE	ENE	E	ESE	SE	SSE	S	SSW	SW	WSW	W	WNW	NW	NNW	Total
calm	•	•	•	•	•	•	•	•	•	•	•	•	•	•	•	•	•
1 - 2 sec	•	•	•	•	•	•	•	•	•	•	•	•	•	•	•	•	•
2 - 4 sec	•	•	•	•	•	•	•	•	•	•	•	•	•	•	•	•	•
4 - 6 sec	0.06	•	•	•	•	•	•	•	0.02	0.12	•	•	•	•	0.34	3.22	3.77
6 - 8 sec	0.16	•	•	•	•	•	•	•	0.05	0.28	0.10	0.15	0.27	0.92	1.38	27.34	30.65
8 - 10 sec	•	•	•	•	•	•	•	•	•	0.04	•	0.09	2.23	9.00	3.02	4.82	19.19
10 - 12 sec	•	•	•	•	•	•	•	•	0.10	0.10	0.02	0.18	1.93	11.73	0.83	0.06	14.96
12 - 14 sec	•	•	•	•	•	•	•	•	1.79	2.02	0.76	0.38	1.25	3.67	0.04	•	9.90
14 - 16 sec	•	•	•	•	•	•	•	•	2.97	6.43	1.48	0.21	0.44	0.54	•	•	12.07
18 - 20 sec	•	•	•	•	•	•	•	•	2.46	4.22	0.66	0.01	0.05	0.05	•	•	7.45
22 - 24 sec	•	•	•	•	•	•	•	•	0.81	1.06	0.12	•	•	0.01	•	•	2.01
Total	0.22	•	•	•	•	•	•	•	8.20	14.27	3.15	1.02	6.17	25.91	5.62	35.45	100.00



RWE Humboldt Bay OCS-P-0561 Climatological Wind Rose for June: 1979 - 2015



Joint Frequency Distribution Table

	N	NNE	NE	ENE	E	ESE	SE	SSE	S	SSW	SW	WSW	W	WNW	NW	NNW	Total
calm	0.01	•	0.01	•	0.01	0.01	0.01	•	0.01	0.01	0.02	•	0.05	0.02	•	0.02	0.21
0 - 5 kts	0.32	0.13	0.11	0.07	0.05	0.09	•	0.15	0.27	0.34	0.40	0.65	0.58	0.71	0.86	0.48	5.20
5 - 10 kts	0.88	0.12	0.02	0.02	0.01	0.04	0.06	0.22	0.93	1.15	1.37	0.95	1.18	1.69	3.67	3.08	15.41
10 - 15 kts	1.57	0.01	0.01	0.01	•	0.01	0.05	0.33	0.99	1.15	0.56	0.24	0.16	0.33	3.11	8.59	17.14
15 - 20 kts	2.82	0.04	•	•	•	•	0.05	0.20	1.04	0.69	0.10	•	•	0.05	0.47	13.29	18.73
20 - 25 kts	4.39	•	•	•	•	•	•	0.09	0.49	0.20	0.01	•	•	•	0.02	13.88	19.08
25 - 30 kts	5.68	•	•	•	•	•	•	0.09	0.28	0.05	•	•	•	•	•	9.08	15.18
30 - 35 kts	3.97	•	•	•	•	•	•	0.02	0.05	•	•	•	•	•	•	3.18	7.22
35 - 40 kts	0.88	•	•	•	•	•	•	0.01	•	•	•	•	•	•	•	0.72	1.62
40 - 45 kts	0.16	•	•	•	•	•	•	•	•	•	•	•	•	•	•	0.05	0.21
45 - 50 kts	0.01	•	•	•	•	•	•	•	•	•	•	•	•	•	•	•	0.01
Total	20.69	0.31	0.16	0.11	0.07	0.15	0.17	1.10	4.06	3.59	2.47	1.85	1.96	2.80	8.13	52.39	100.00