

RWE Humboldt Bay OCS-P-0561 - May

Latitude: 41.00 N Longitude: 125.00 W

Weather Days

Wave Height > 6.0 ft Mean: 16.7 days Range: 12.8 - 20.6 days p50:24 days p75:21 days p90:17 days

Wave Height > 7.0 ft Mean: 13.3 days Range: 9.0 - 17.5 days p50:18 days p75:16 days p90:11.5 days

Wave Height > 8.0 ft Mean: 9.6 days Range: 5.3 - 13.8 days p50:13 days p75:10 days p90:7.5 days

Wind Speed > 10.0 knots Mean: 22.8 days Range: 20.0 - 25.6 days p50:23.5 days p75:22 days p90:19 days

Wind Speed > 15.0 knots Mean: 16.7 days Range: 12.9 - 20.4 days p50:17 days p75:15 days p90:11.5 days

Wind Speed > 20.0 knots Mean: 10.2 days Range: 6.1 - 14.3 days p50:10.5 days p75:7.5 days p90:4.5 days

Working Window

Wave Height < 6.0 ft
A 1 day or longer window will statistically occur 2.6 times per month
A 2 day or longer window will statistically occur 1.2 times per month
A 3 day or longer window will statistically occur 0.5 times per month

Wave Height < 7.0 ft
A 1 day or longer window will statistically occur 3.9 times per month
A 2 day or longer window will statistically occur 2.1 times per month
A 3 day or longer window will statistically occur 1.3 times per month

Wave Height < 8.0 ft
A 1 day or longer window will statistically occur 4.9 times per month
A 2 day or longer window will statistically occur 2.9 times per month
A 3 day or longer window will statistically occur 2.0 times per month

Waves

Mean Height: 6 - 8 ft

The wave heights will occasionally reach 14 - 16 ft, but rarely higher.

Mean Period: 10 - 12 sec

The wave periods will occasionally reach 22 - 24 sec, but rarely longer.

Principle Direction, from: WNW

WindSea/Swell: 20% / 80%

Winds

Mean Speed: 15 - 20 kts

The winds will occasionally reach 35 - 40 kts, but rarely greater.

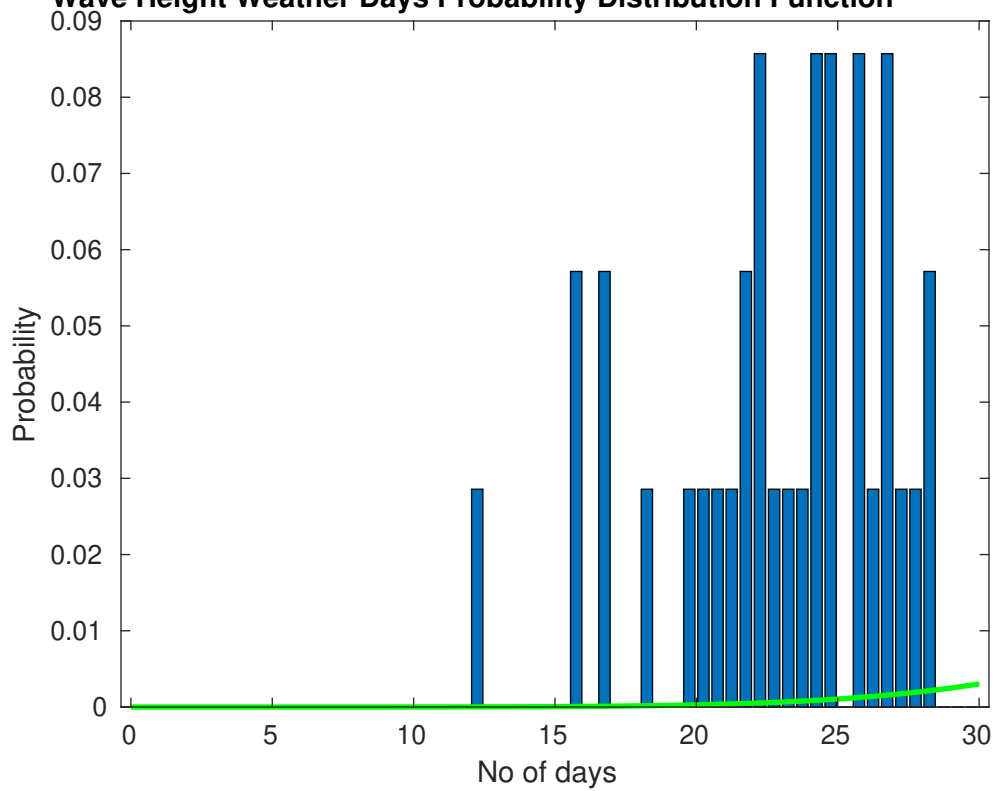
Principle Direction, from: NNW

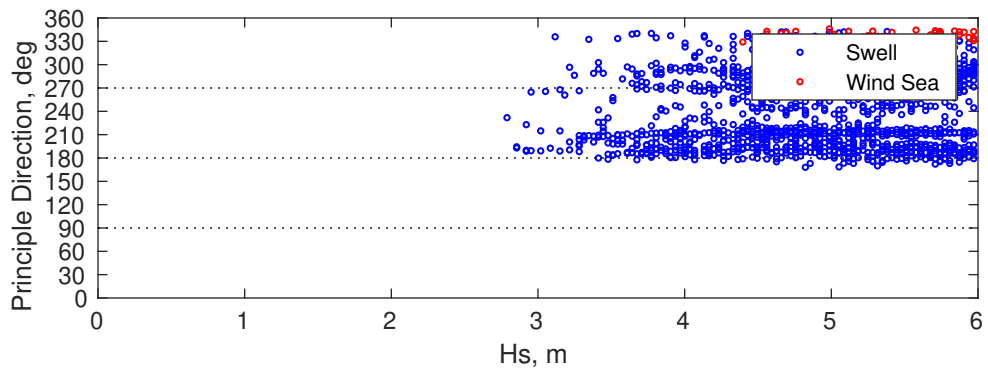
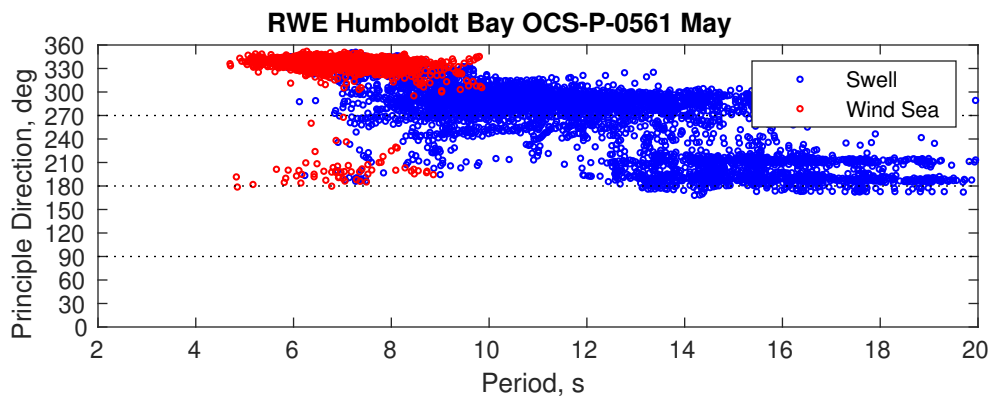
Severe Storms

There is a 40 % chance of a storm occurring in the month with winds peaking above 34 kts.

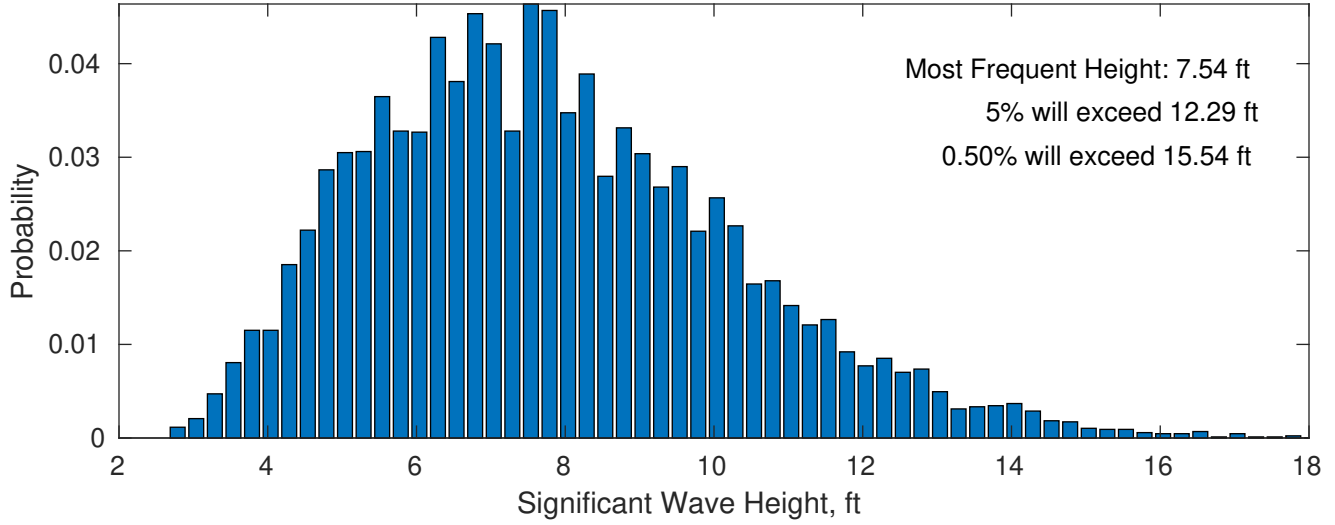
There is little chance of a storm occurring in the month with waves peaking at 4m (13 ft) or greater.

Wave Height Weather Days Probability Distribution Function

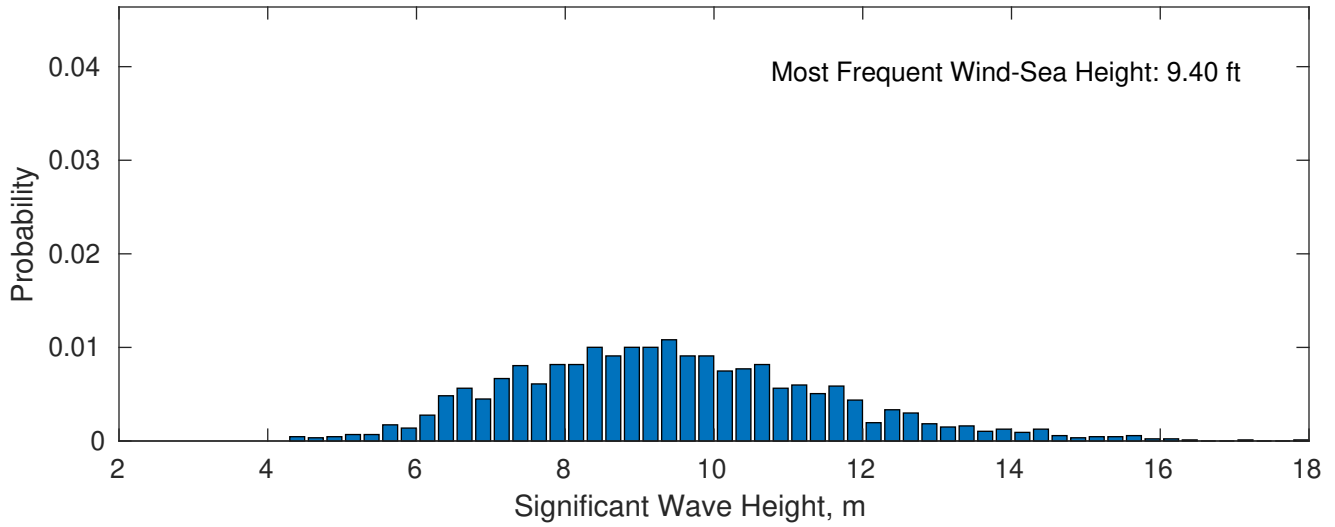




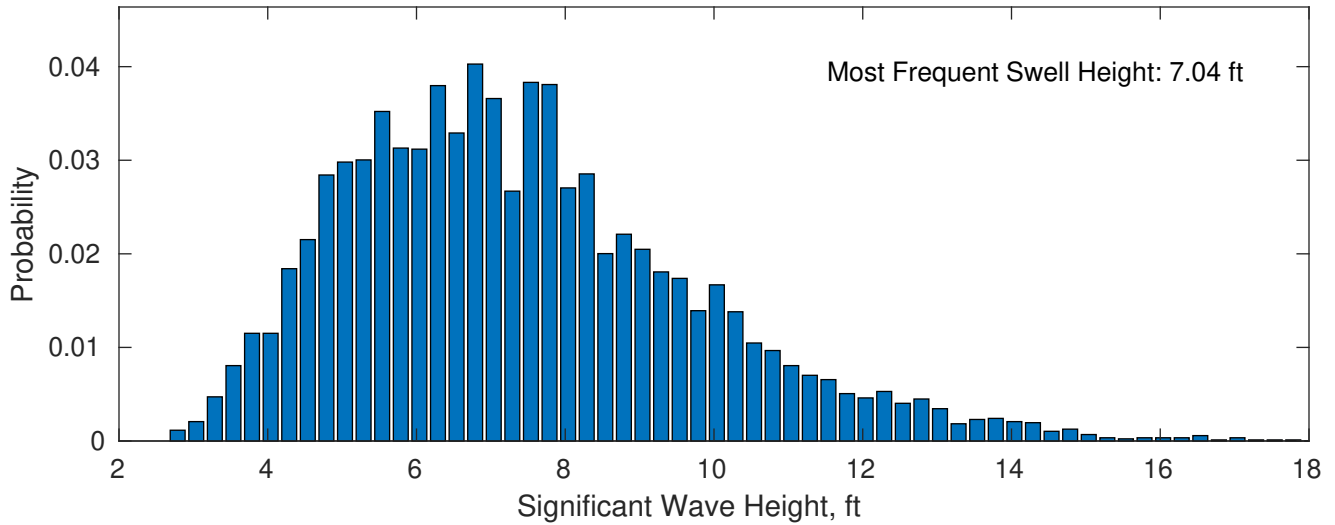
May Wave Height PDF: 1979 - 2015



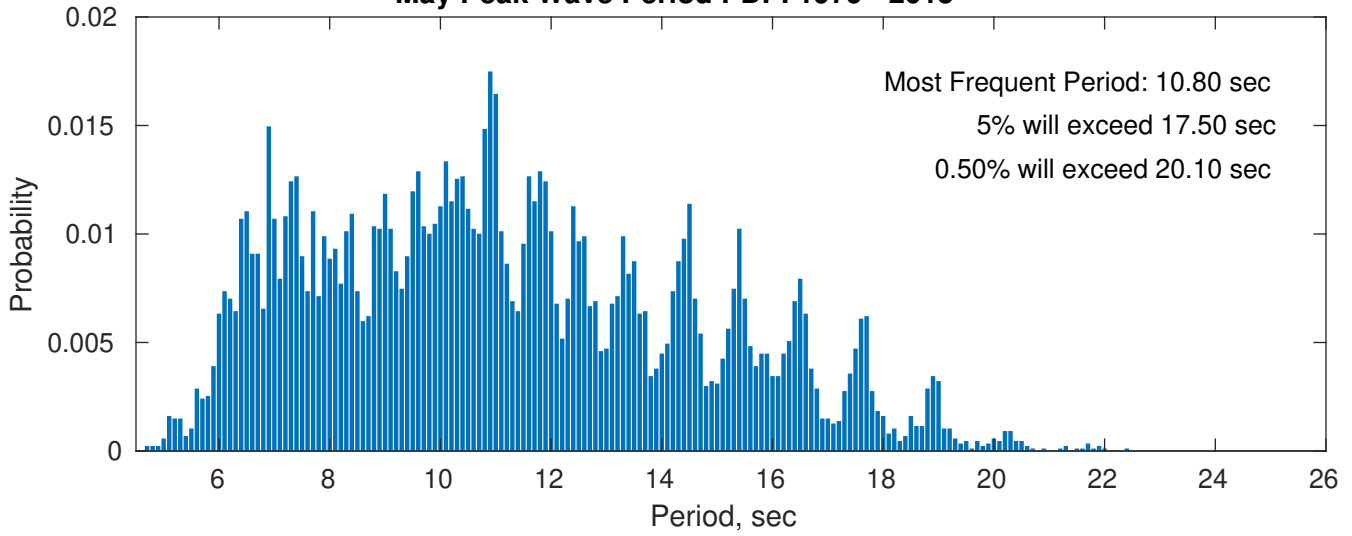
Wind-Sea: 20.05%



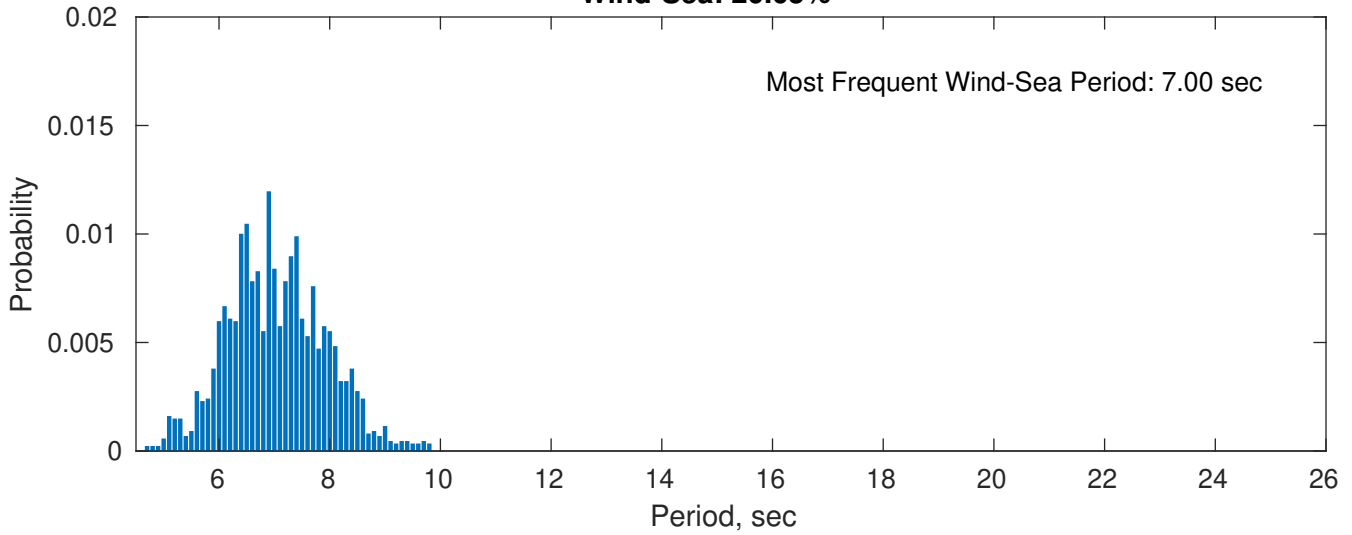
Swell: 79.95%



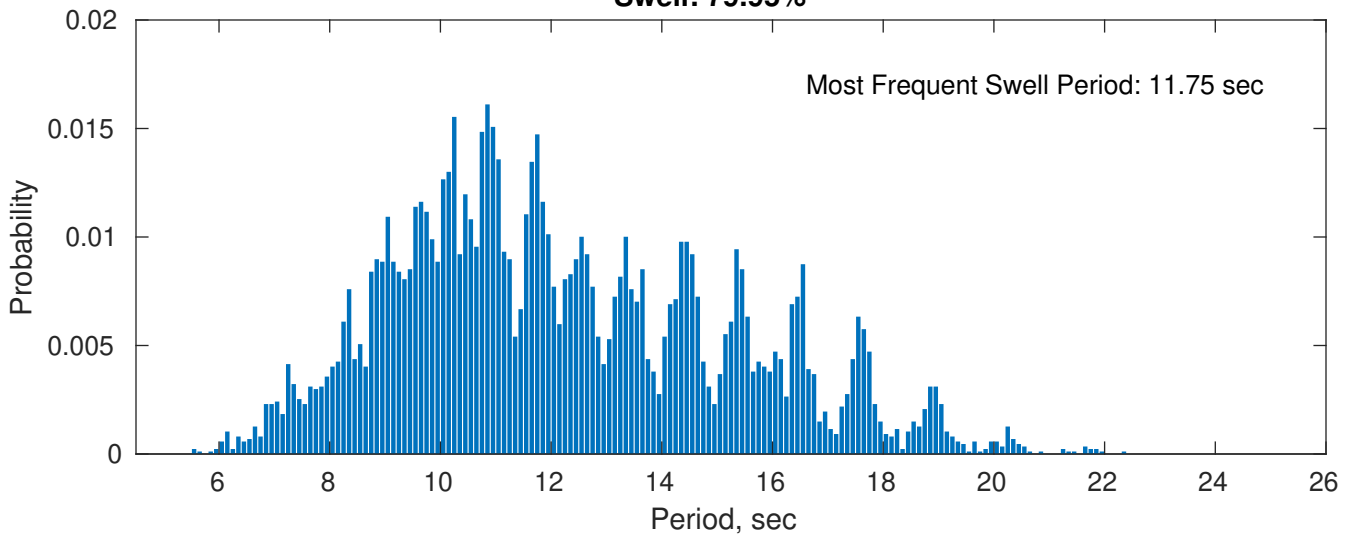
May Peak Wave Period PDF: 1979 - 2015



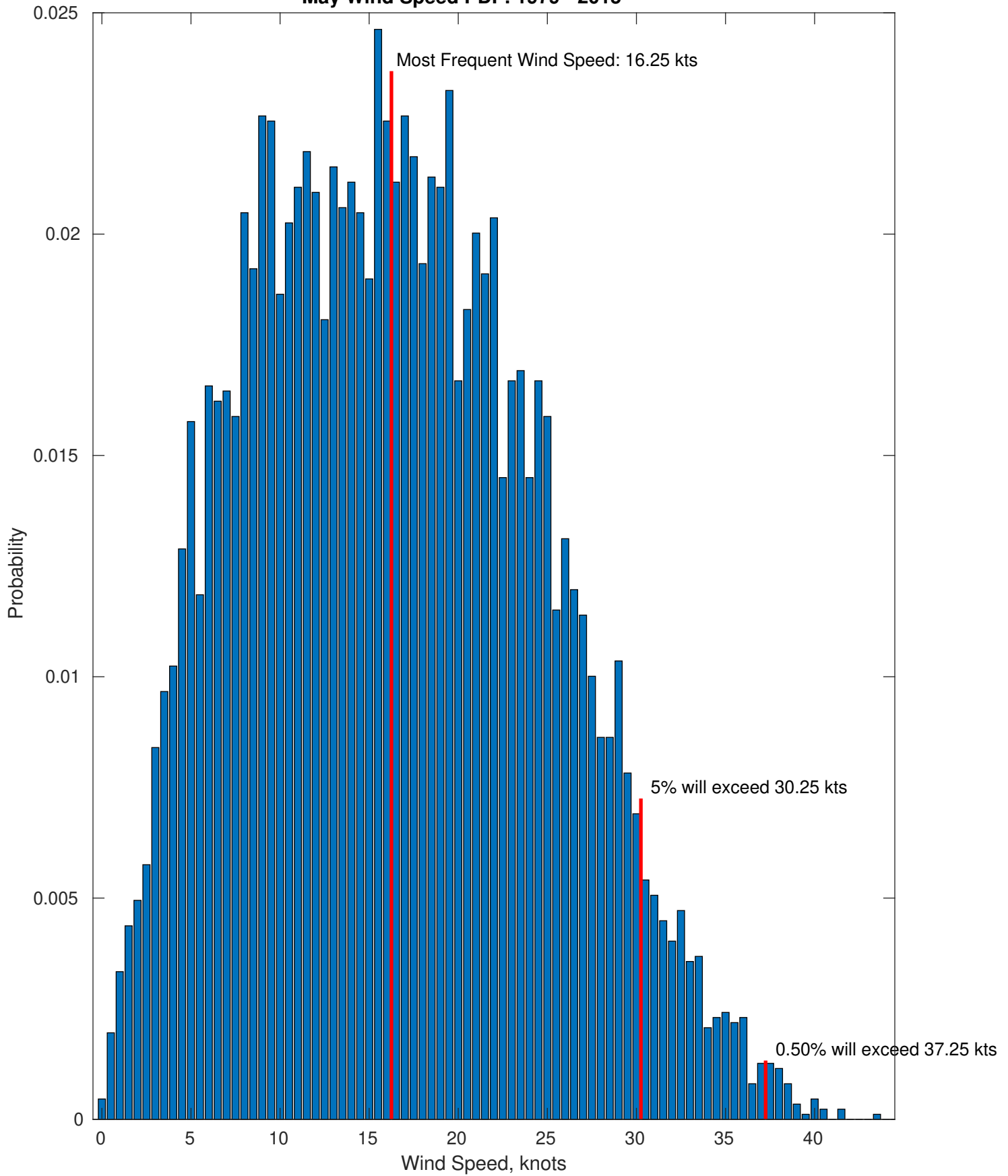
Wind-Sea: 20.05%



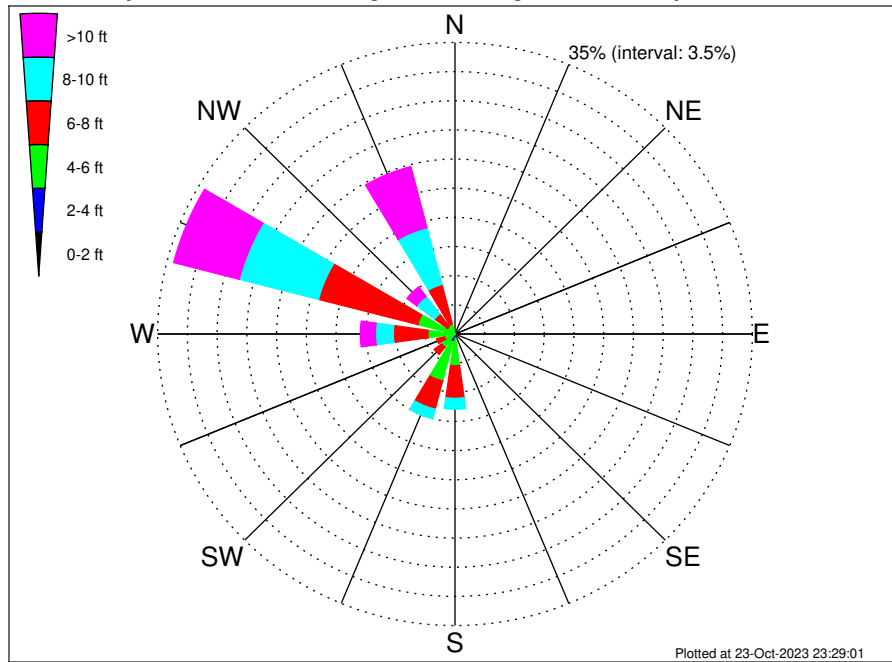
Swell: 79.95%



May Wind Speed PDF: 1979 - 2015



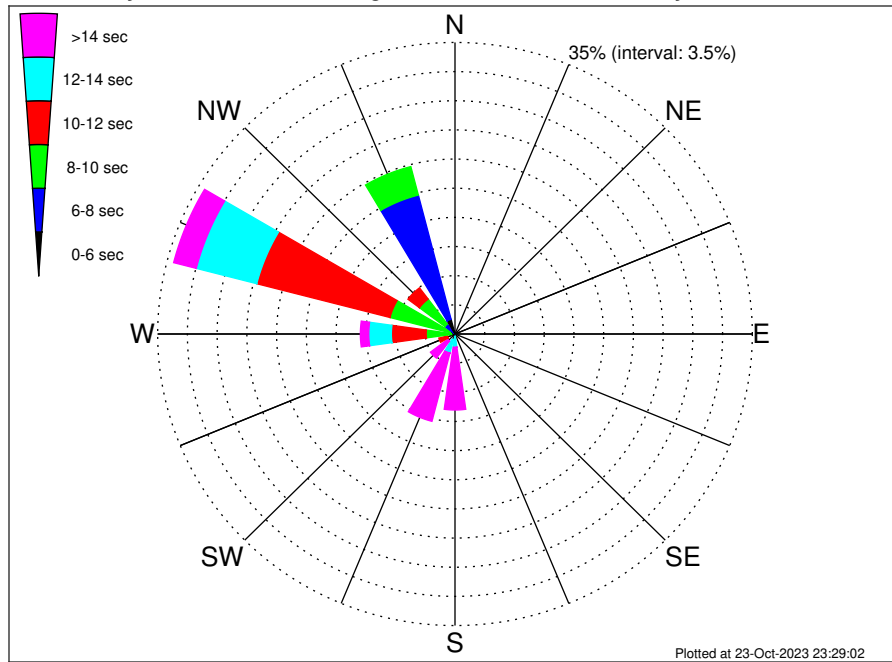
RWE Humboldt Bay OCS-P-0561 Climatological WaveHeight Rose for May: 1979 - 2015



Joint Frequency Distribution Table

	N	NNE	NE	ENE	E	ESE	SE	SSE	S	SSW	SW	WSW	W	WNW	NW	NNW	Total
calm
1 - 2 ft
2 - 4 ft	0.53	0.96	0.21	0.09	0.24	0.32	.	0.09	2.44
4 - 6 ft	0.02	3.29	4.88	1.77	1.20	2.95	4.20	1.09	1.16	20.56
6 - 8 ft	3.90	3.50	1.09	0.94	4.07	12.07	1.92	4.88	32.38
8 - 10 ft	0.06	1.30	1.17	0.44	0.61	2.11	9.64	2.64	7.05	25.02
10 - 12 ft	0.09	0.09	0.24	0.06	0.17	1.08	5.21	1.21	5.06	13.22
12 - 14 ft	0.01	0.08	0.06	0.02	0.45	2.01	0.17	1.80	4.60
14 - 16 ft	0.01	0.17	0.55	0.06	0.60	1.39
16 - 18 ft	0.05	0.17	.	0.07	0.29
> 18 ft	0.02	0.02	.	0.05	0.09
Total	0.15	0.02	9.13	10.83	3.62	3.05	11.14	34.21	7.09	20.76	100.00

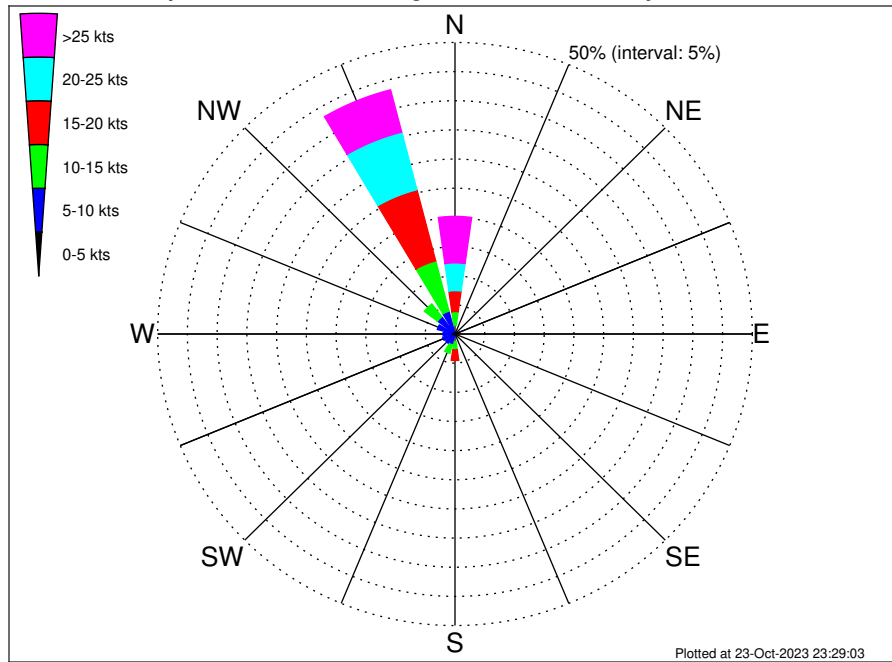
RWE Humboldt Bay OCS-P-0561 Climatological WavePeriod Rose for May: 1979 - 2015



Joint Frequency Distribution Table

	N	NNE	NE	ENE	E	ESE	SE	SSE	S	SSW	SW	WSW	W	WNW	NW	NNW	Total
calm	•	•	•	•	•	•	•	•	•	•	•	•	•	•	•	•	•
1 - 2 sec	•	•	•	•	•	•	•	•	•	•	•	•	•	•	•	•	•
2 - 4 sec	•	•	•	•	•	•	•	•	•	•	•	•	•	•	•	•	•
4 - 6 sec	•	•	•	•	•	•	•	•	0.05	0.03	•	•	•	•	0.03	1.82	1.93
6 - 8 sec	0.15	•	•	•	•	•	•	•	0.24	0.35	0.12	0.07	0.41	0.56	1.45	15.41	18.76
8 - 10 sec	•	•	•	•	•	•	•	•	•	0.26	0.23	0.85	2.98	7.34	3.76	3.53	18.96
10 - 12 sec	•	•	•	•	•	•	•	•	•	0.06	0.17	1.05	4.10	16.20	1.69	•	23.27
12 - 14 sec	•	•	•	•	•	•	•	•	1.30	1.66	0.56	0.72	2.66	7.35	0.13	•	14.38
14 - 16 sec	•	•	•	•	•	•	•	0.02	2.75	4.55	1.54	0.31	0.77	2.12	0.02	•	12.08
18 - 20 sec	•	•	•	•	•	•	•	•	3.10	3.08	0.89	0.03	0.22	0.48	•	•	7.80
22 - 24 sec	•	•	•	•	•	•	•	•	1.69	0.84	0.12	0.01	•	0.15	•	•	2.81
Total	0.15	•	•	•	•	•	•	0.02	9.13	10.83	3.62	3.05	11.14	34.21	7.09	20.76	100.00

RWE Humboldt Bay OCS-P-0561 Climatological Wind Rose for May: 1979 - 2015



Joint Frequency Distribution Table

	N	NNE	NE	ENE	E	ESE	SE	SSE	S	SSW	SW	WSW	W	WNW	NW	NNW	Total
calm	0.01	•	0.05	0.01	0.02	0.02	0.01	•	0.05	0.01	•	•	0.02	0.02	•	0.01	0.24
0 - 5 kts	0.40	0.31	0.20	0.07	0.09	0.14	0.09	0.16	0.26	0.39	0.60	0.75	0.66	0.78	0.56	0.49	5.96
5 - 10 kts	1.06	0.39	0.10	0.12	0.08	0.09	0.09	0.38	0.99	1.50	1.36	1.38	1.32	2.26	3.13	3.52	17.77
10 - 15 kts	2.38	0.21	0.02	0.07	0.02	0.01	0.05	0.40	1.43	1.53	0.98	0.54	0.33	0.81	2.76	8.92	20.46
15 - 20 kts	3.58	0.15	•	•	0.01	0.02	0.17	0.48	1.82	0.94	0.43	0.23	0.18	0.30	0.74	12.61	21.67
20 - 25 kts	4.76	0.10	•	•	•	•	0.05	0.47	1.19	0.37	0.10	0.02	0.03	0.02	0.05	10.21	17.38
25 - 30 kts	4.53	0.02	•	•	•	•	•	0.28	0.32	0.06	•	•	•	0.01	•	5.71	10.93
30 - 35 kts	2.49	0.01	•	•	•	•	•	0.12	0.18	0.01	•	•	•	•	•	1.42	4.22
35 - 40 kts	0.89	•	•	•	•	•	•	0.02	0.01	•	•	•	•	•	•	0.35	1.27
40 - 45 kts	0.07	•	•	•	•	•	•	•	0.01	•	•	•	•	•	•	0.02	0.10
45 - 50 kts	•	•	•	•	•	•	•	•	•	•	•	•	•	•	•	•	•
Total	20.17	1.20	0.37	0.26	0.23	0.29	0.46	2.31	6.26	4.81	3.46	2.92	2.55	4.20	7.24	43.26	100.00