

## RWE Humboldt Bay OCS-P-0561 - October

Latitude: 41.00 N Longitude: 125.00 W

### Weather Days

Wave Height > 6.0 ft Mean: 18.8 days Range: 15.9 - 21.7 days p50:25.5 days p75:23.5 days p90:21 days

Wave Height > 7.0 ft Mean: 15.2 days Range: 11.6 - 18.7 days p50:21.5 days p75:18 days p90:16 days

Wave Height > 8.0 ft Mean: 11.2 days Range: 7.2 - 15.1 days p50:17.5 days p75:14 days p90:12 days

Wind Speed > 10.0 knots Mean: 19.7 days Range: 16.6 - 22.8 days p50:20.5 days p75:17 days p90:16 days

Wind Speed > 15.0 knots Mean: 13.3 days Range: 10.2 - 16.3 days p50:13.5 days p75:11 days p90:10 days

Wind Speed > 20.0 knots Mean: 7.8 days Range: 5.1 - 10.4 days p50:7.5 days p75:6.5 days p90:4 days

### Working Window

Wave Height < 6.0 ft  
A 1 day or longer window will statistically occur 1.9 times per month  
A 2 day or longer window will statistically occur 0.9 times per month  
A 3 day or longer window will statistically occur 0.3 times per month

Wave Height < 7.0 ft  
A 1 day or longer window will statistically occur 3.4 times per month  
A 2 day or longer window will statistically occur 1.8 times per month  
A 3 day or longer window will statistically occur 0.9 times per month

Wave Height < 8.0 ft  
A 1 day or longer window will statistically occur 4.5 times per month  
A 2 day or longer window will statistically occur 2.5 times per month  
A 3 day or longer window will statistically occur 1.5 times per month

### Waves

Mean Height: 8 - 10 ft

The wave heights will occasionally reach > 18 ft, but rarely higher.

Mean Period: 10 - 12 sec

The wave periods will occasionally reach 22 - 24 sec, but rarely longer.

Principle Direction, from: WNW

WindSea/Swell: 8% / 92%

### Winds

Mean Speed: 10 - 15 kts

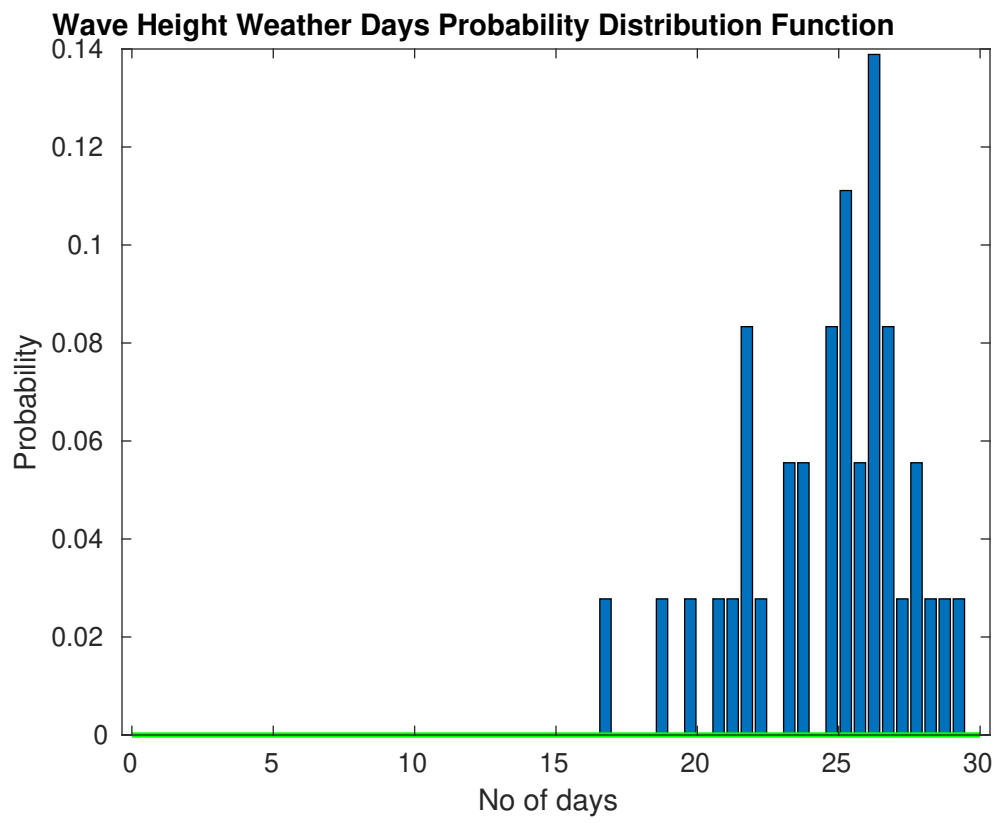
The winds will occasionally reach 35 - 40 kts, but rarely greater.

Principle Direction, from: N

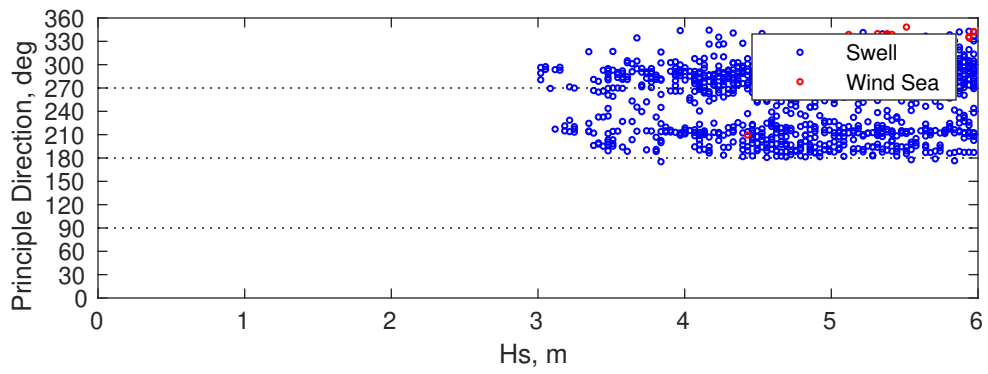
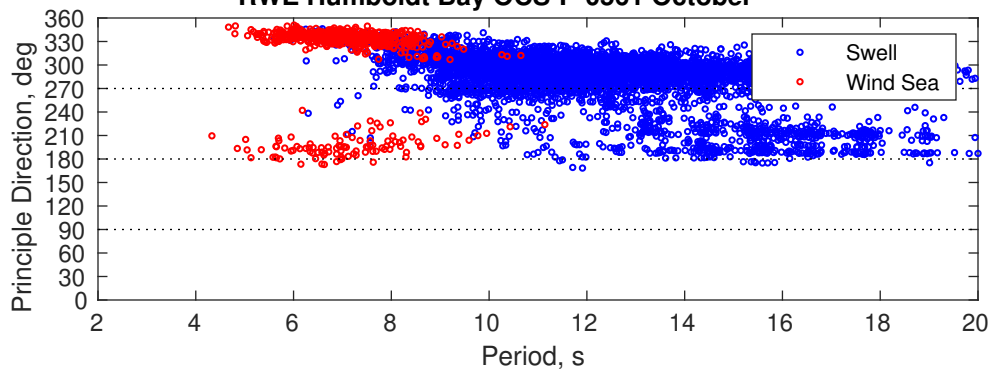
### Severe Storms

There is a 14 % chance of a storm occurring in the month with winds peaking above 34 kts.

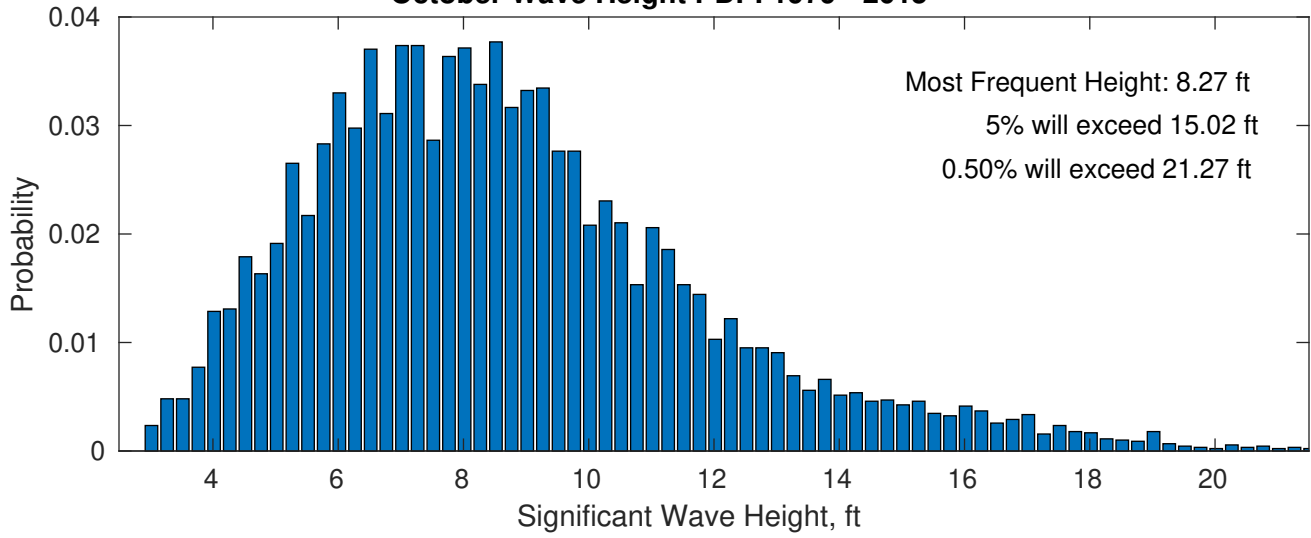
There is a 19 % chance of a storm occurring in the month with waves exceeding 3 m (10 ft) above the mean wave height.



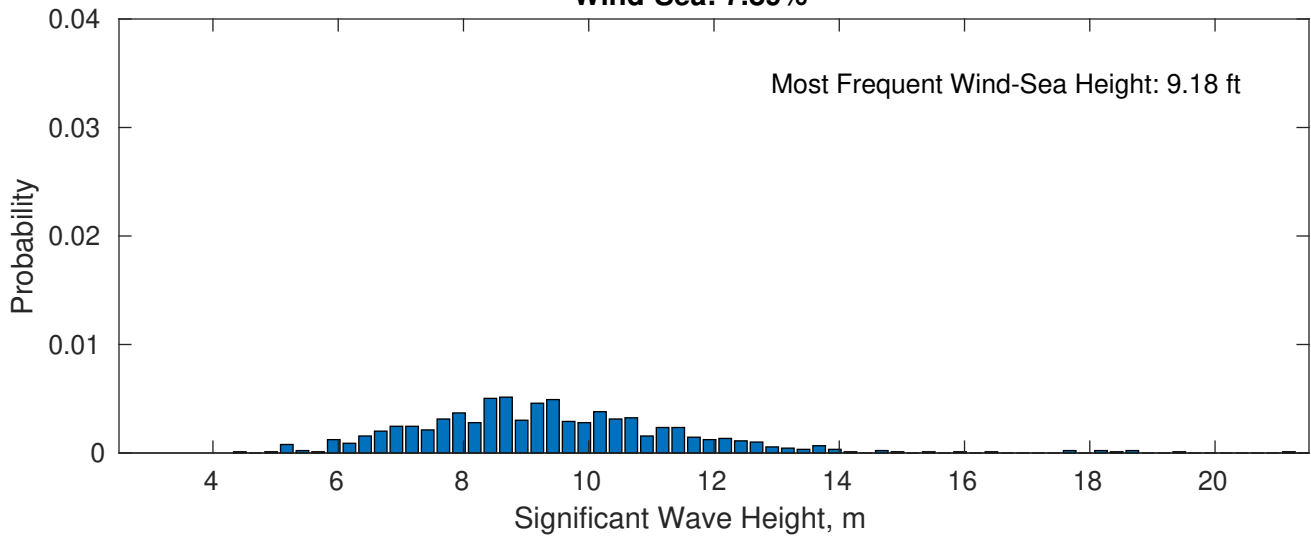
RWE Humboldt Bay OCS-P-0561 October



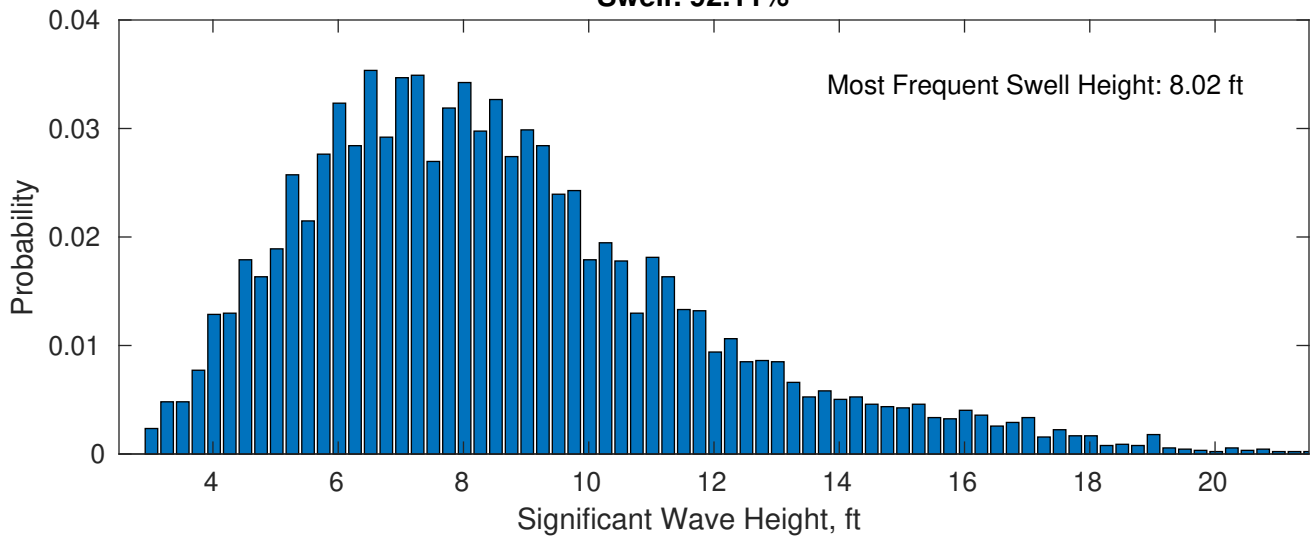
**October Wave Height PDF: 1979 - 2015**



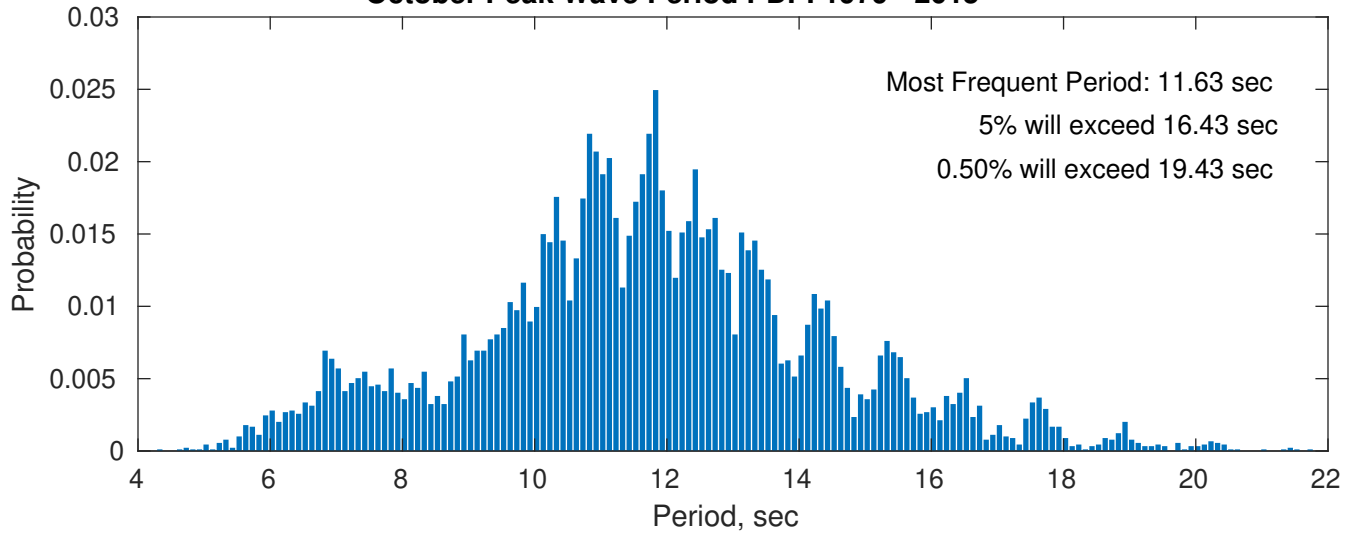
**Wind-Sea: 7.89%**



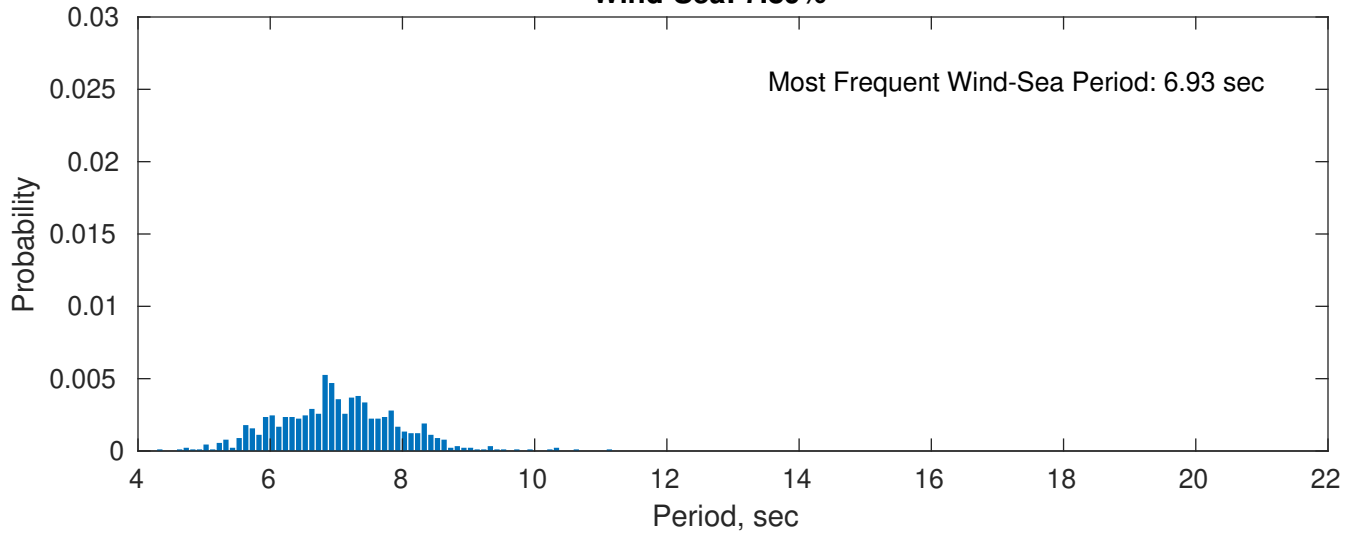
**Swell: 92.11%**



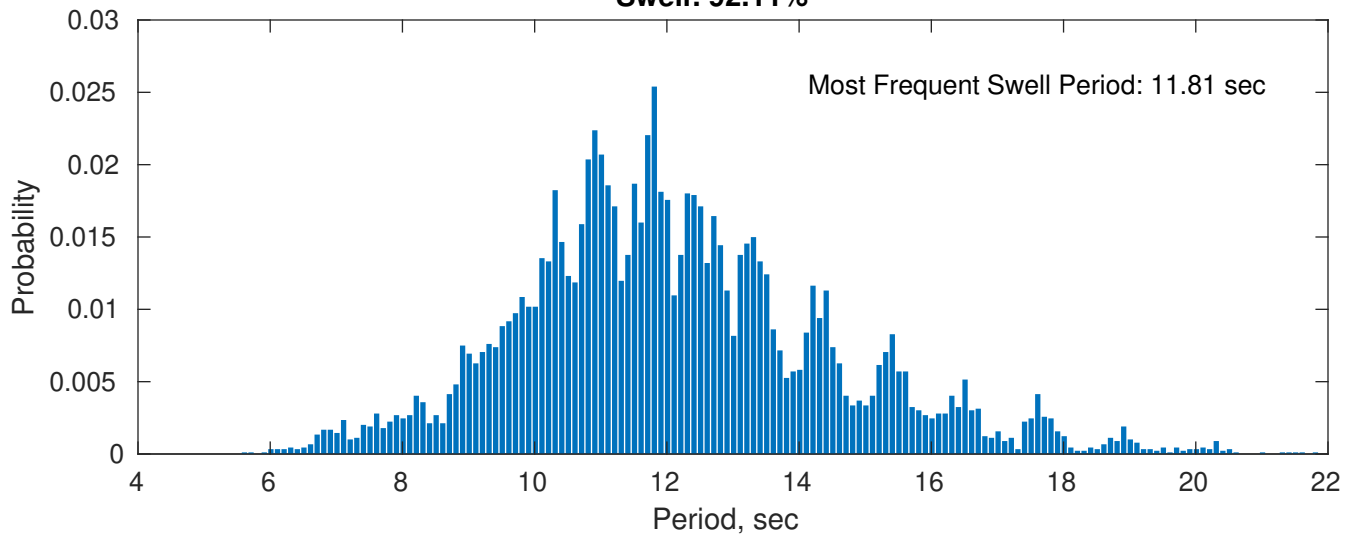
### October Peak Wave Period PDF: 1979 - 2015



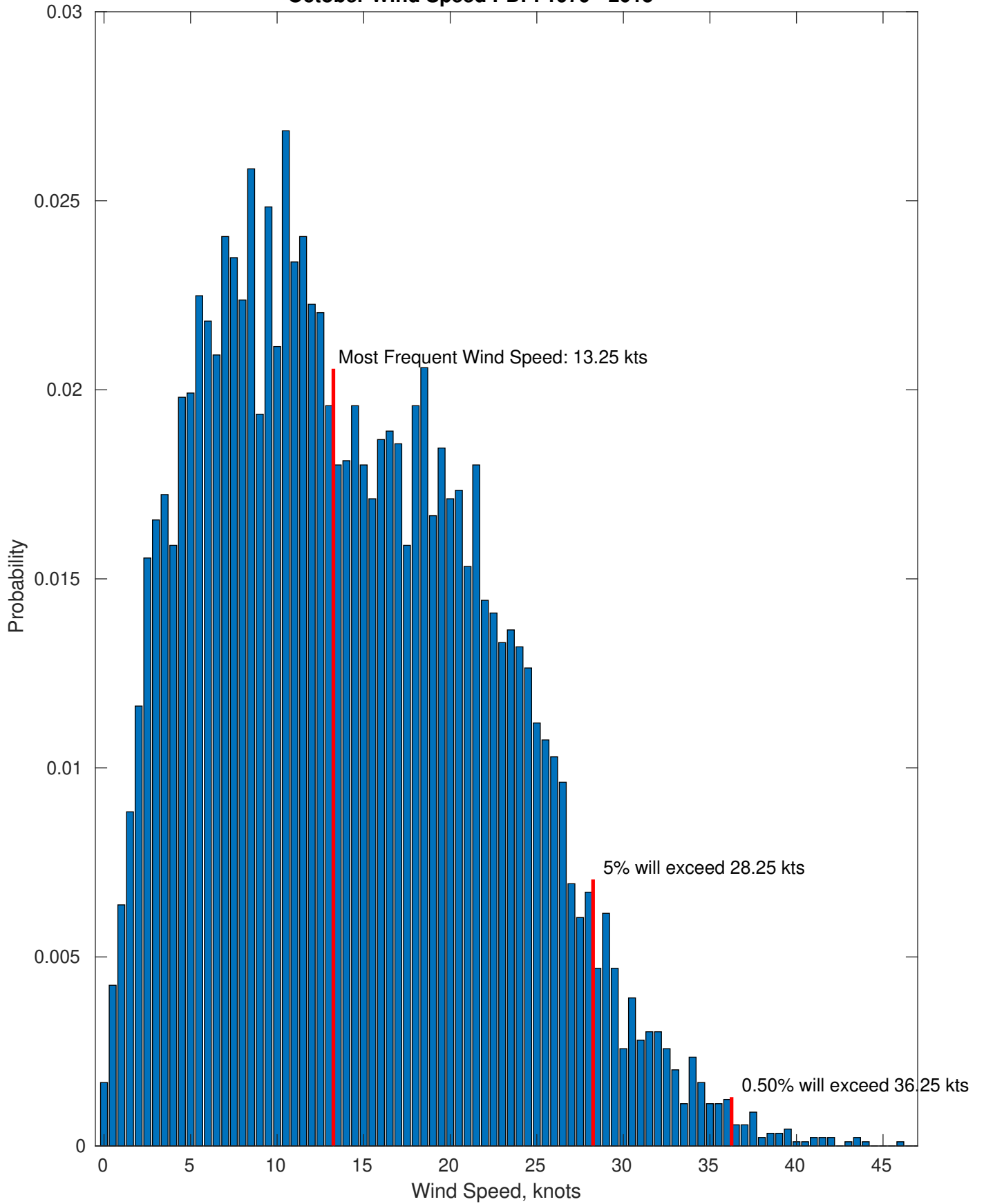
### Wind-Sea: 7.89%



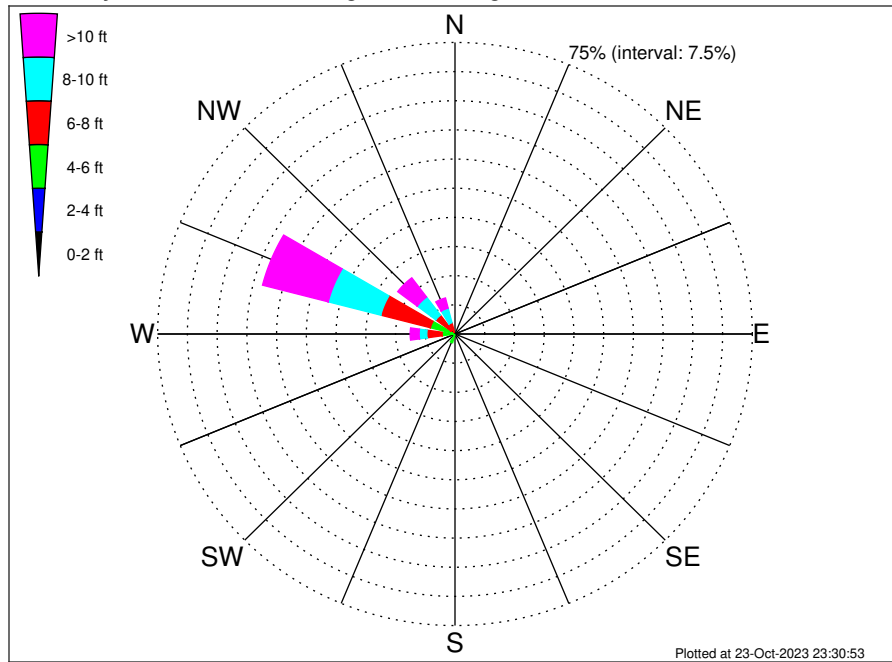
### Swell: 92.11%



October Wind Speed PDF: 1979 - 2015



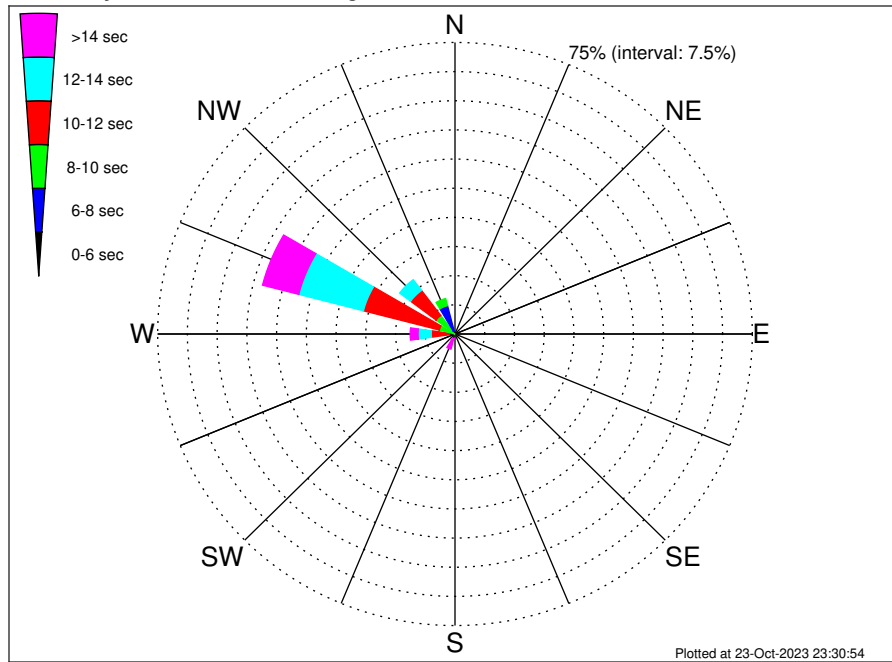
RWE Humboldt Bay OCS-P-0561 Climatological WaveHeight Rose for October: 1979 - 2015



Joint Frequency Distribution Table

	N	NNE	NE	ENE	E	ESE	SE	SSE	S	SSW	SW	WSW	W	WNW	NW	NNW	Total
calm	•	•	•	•	•	•	•	•	•	•	•	•	•	•	•	•	•
1 - 2 ft	•	•	•	•	•	•	•	•	•	•	•	•	•	•	•	•	•
2 - 4 ft	•	•	•	•	•	•	•	•	0.09	0.30	0.35	0.08	0.37	0.62	0.06	0.02	1.88
4 - 6 ft	•	•	•	•	•	•	•	•	0.92	2.05	1.21	0.66	2.89	5.81	1.20	0.55	15.27
6 - 8 ft	0.01	•	•	•	•	•	•	•	0.90	0.87	0.70	0.60	3.85	12.92	4.82	2.43	27.11
8 - 10 ft	0.03	•	•	•	•	•	•	0.01	0.34	0.32	0.11	0.12	1.94	13.69	5.84	3.86	26.27
10 - 12 ft	0.01	•	•	•	•	•	•	•	0.11	0.16	0.12	0.10	1.05	8.18	3.28	2.04	15.05
12 - 14 ft	•	•	•	•	•	•	•	•	0.10	0.16	0.03	0.07	0.68	3.88	1.58	0.58	7.08
14 - 16 ft	•	•	•	•	•	•	•	•	•	0.04	0.06	0.01	0.30	2.48	0.59	0.07	3.56
16 - 18 ft	•	•	•	•	•	•	•	•	•	0.06	0.02	0.02	0.16	1.57	0.41	0.03	2.27
> 18 ft	•	•	•	•	•	•	•	•	•	0.06	0.04	•	0.08	1.01	0.32	•	1.51
Total	0.06	•	•	•	•	•	•	0.01	2.45	4.02	2.65	1.67	11.31	50.16	18.10	9.58	100.00

RWE Humboldt Bay OCS-P-0561 Climatological WavePeriod Rose for October: 1979 - 2015

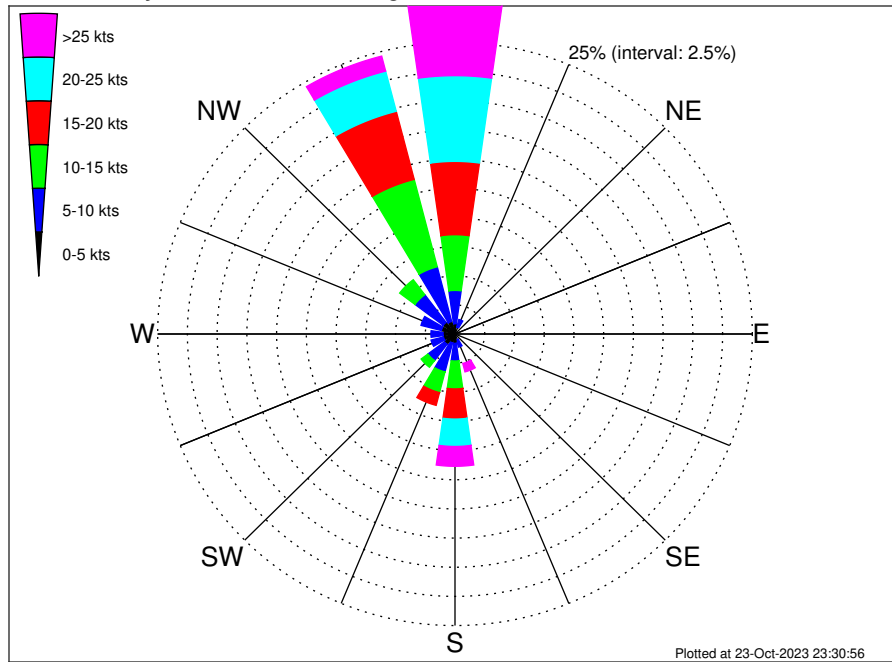


Joint Frequency Distribution Table

	N	NNE	NE	ENE	E	ESE	SE	SSE	S	SSW	SW	WSW	W	WNW	NW	NNW	Total
calm	•	•	•	•	•	•	•	•	•	•	•	•	•	•	•	•	•
1 - 2 sec	•	•	•	•	•	•	•	•	•	•	•	•	•	•	•	•	•
2 - 4 sec	•	•	•	•	•	•	•	•	•	•	•	•	•	•	•	•	•
4 - 6 sec	0.02	•	•	•	•	•	•	•	0.08	0.12	•	•	•	•	•	0.82	1.04
6 - 8 sec	0.03	•	•	•	•	•	•	•	0.28	0.37	0.08	0.04	0.02	0.15	0.74	6.71	8.42
8 - 10 sec	•	•	•	•	•	•	•	•	0.02	0.20	0.12	0.22	1.42	3.94	5.22	1.89	13.05
10 - 12 sec	•	•	•	•	•	•	•	0.01	0.13	0.16	0.21	0.39	4.55	19.78	8.08	0.12	33.44
12 - 14 sec	•	•	•	•	•	•	•	•	0.17	0.37	0.66	0.70	3.32	16.86	3.46	0.03	25.58
14 - 16 sec	•	•	•	•	•	•	•	•	0.85	1.19	0.95	0.23	1.60	6.76	0.55	•	12.13
18 - 20 sec	•	•	•	•	•	•	•	•	0.58	1.38	0.53	0.03	0.29	1.98	0.04	•	4.83
22 - 24 sec	•	•	•	•	•	•	•	•	0.34	0.23	0.10	0.03	0.10	0.69	0.01	•	1.51
Total	0.06	•	•	•	•	•	•	0.01	2.45	4.02	2.65	1.67	11.31	50.16	18.10	9.58	100.00



RWE Humboldt Bay OCS-P-0561 Climatological Wind Rose for October: 1979 - 2015



Joint Frequency Distribution Table

	N	NNE	NE	ENE	E	ESE	SE	SSE	S	SSW	SW	WSW	W	WNW	NW	NNW	Total
calm	0.03	0.03	0.02	0.01	0.08	0.02	0.02	0.02	0.10	0.07	0.03	0.02	0.03	0.06	0.01	0.02	0.59
0 - 5 kts	0.85	0.57	0.37	0.27	0.22	0.18	0.32	0.50	0.70	0.72	1.07	0.98	0.97	1.13	1.23	1.09	11.19
5 - 10 kts	2.85	0.68	0.23	0.15	0.15	0.12	0.18	0.64	1.51	2.57	1.75	1.07	1.02	1.77	2.98	4.84	22.51
10 - 15 kts	4.78	0.31	0.07	0.03	0.03	0.01	0.10	0.50	2.39	1.83	0.72	0.45	0.51	0.40	1.61	7.74	21.50
15 - 20 kts	6.29	0.41	0.02	•	•	0.01	0.03	0.49	2.58	1.13	0.45	0.29	0.11	0.13	0.26	6.03	18.25
20 - 25 kts	7.35	0.20	•	•	•	•	0.06	0.45	2.35	0.47	0.21	0.08	0.09	0.02	0.08	3.56	14.91
25 - 30 kts	4.81	0.06	•	•	•	•	•	0.35	1.07	0.19	0.02	0.01	•	0.01	0.01	1.17	7.71
30 - 35 kts	1.72	•	•	•	•	•	•	0.18	0.39	0.04	0.01	•	•	•	•	0.16	2.51
35 - 40 kts	0.34	•	•	•	•	•	•	0.16	0.19	•	•	•	•	•	•	•	0.68
40 - 45 kts	0.03	•	•	•	•	•	•	0.06	0.04	•	•	•	•	•	•	•	0.13
45 - 50 kts	•	•	•	•	•	•	•	0.01	•	•	•	•	•	•	•	•	0.01
Total	29.06	2.27	0.72	0.46	0.48	0.35	0.72	3.36	11.34	7.03	4.26	2.91	2.74	3.52	6.18	24.61	100.00