

Santa Marta Colombia - April

Latitude: 11.45 N Longitude: 74.66 W

Weather Days

Wave Height > 5.0 ft Mean: 18.9 days Range: 13.4 - 24.4 days p50: 19 days p90: 20 days

Wave Height > 6.0 ft Mean: 12.9 days Range: 7.0 - 18.7 days p50: 13 days p90: 20 days

Wave Height > 7.0 ft Mean: 7.3 days Range: 2.5 - 12.2 days p50: 6 days p90: 19 days

Working Window Probability

Wave Height < 5.0 ft 3 days or longer: 22%

5 days or longer: 7%

7 days or longer: 3%

Wave Height < 6.0 ft 3 days or longer: 25%

5 days or longer: 9%

7 days or longer: 6%

Wave Height < 7.0 ft 3 days or longer: 29%

5 days or longer: 16%

7 days or longer: 11%

Waves

Mean Height: 4 - 6 ft

The wave heights will occasionally reach 10 - 12 ft, but rarely higher.

Mean Period: 6 - 8 sec

The wave periods will occasionally reach 8 - 10 sec, but rarely longer.

Principle Direction, from: NE

WindSea/Swell: 75% / 25%

Winds

Mean Speed: 15 - 20 kts

The winds will occasionally reach 30 - 35 kts, but rarely greater.

Principle Direction, from: ENE

Currents

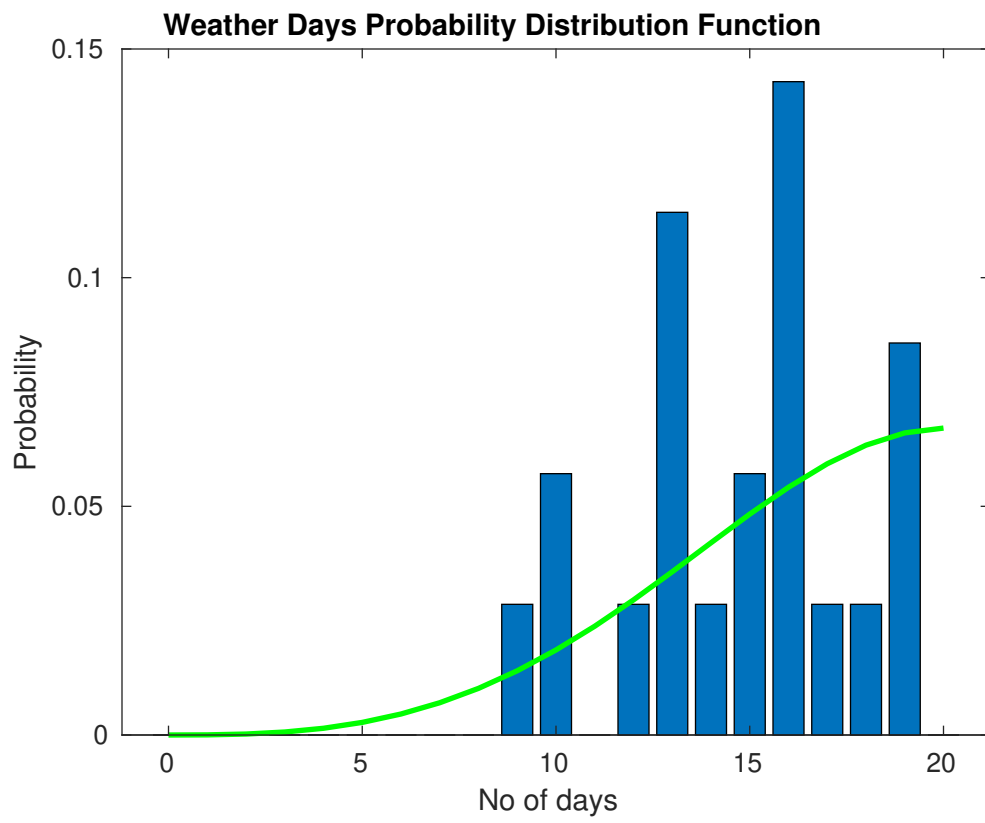
Mean Speed: 0.50-0.75 kts

The currents will occasionally reach 1.50-1.75 kts, but rarely greater.

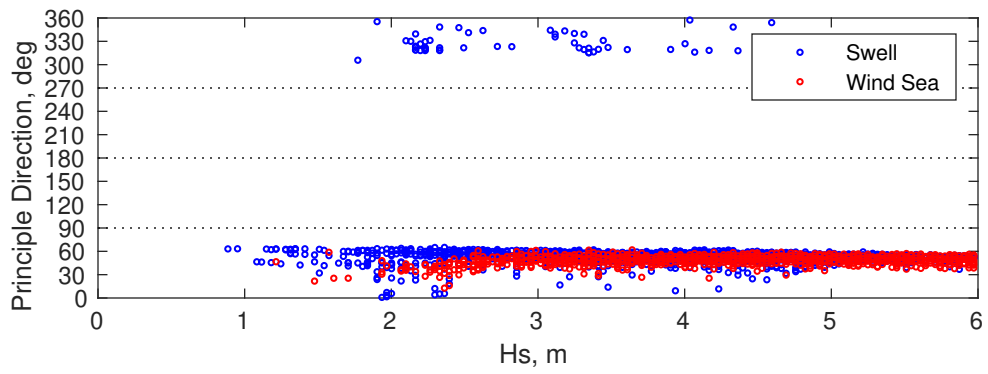
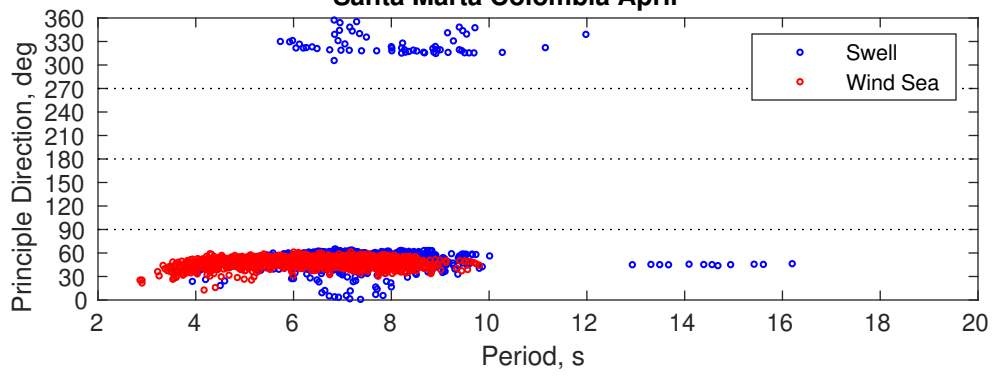
Principle Direction, to: WSW

Severe Storms

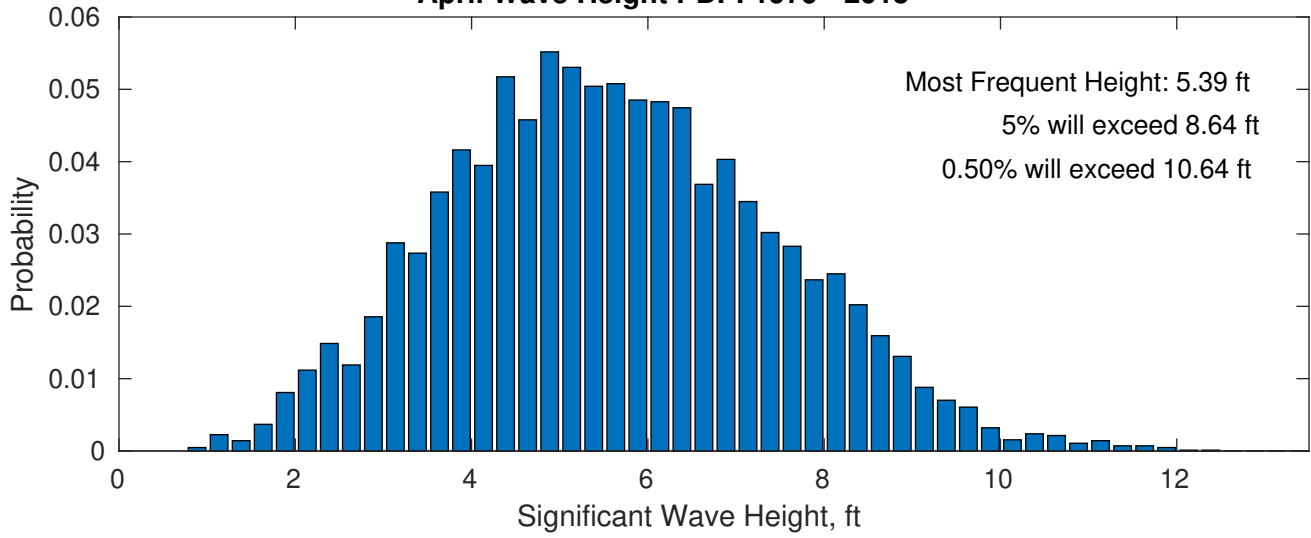
There is a 3 % chance of a storm with winds peaking above 34 kts.



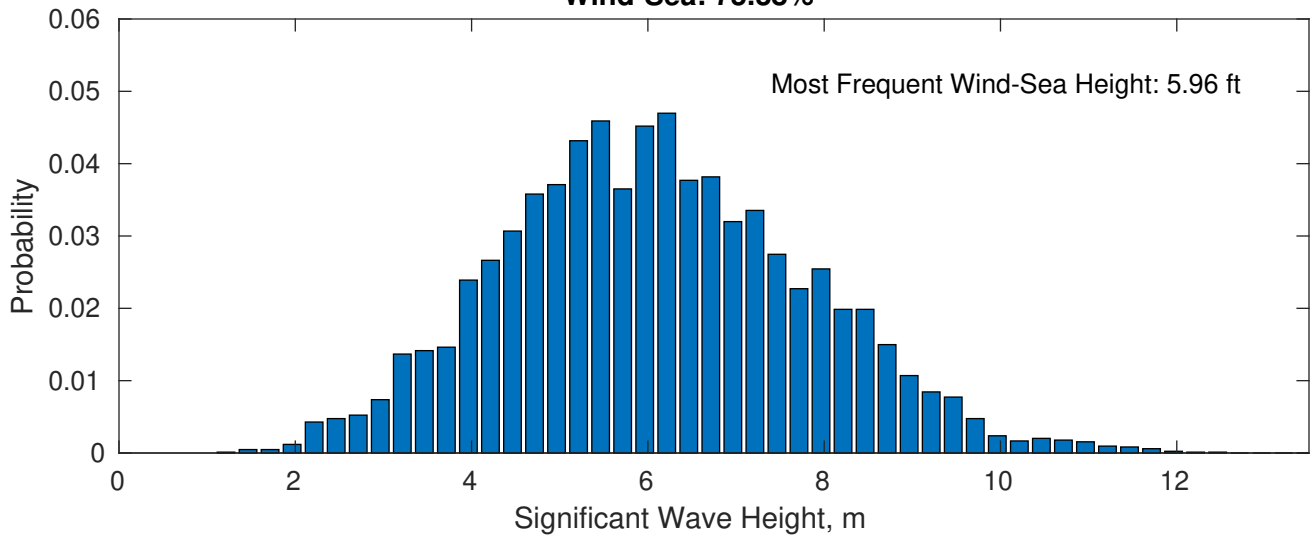
Santa Marta Colombia April



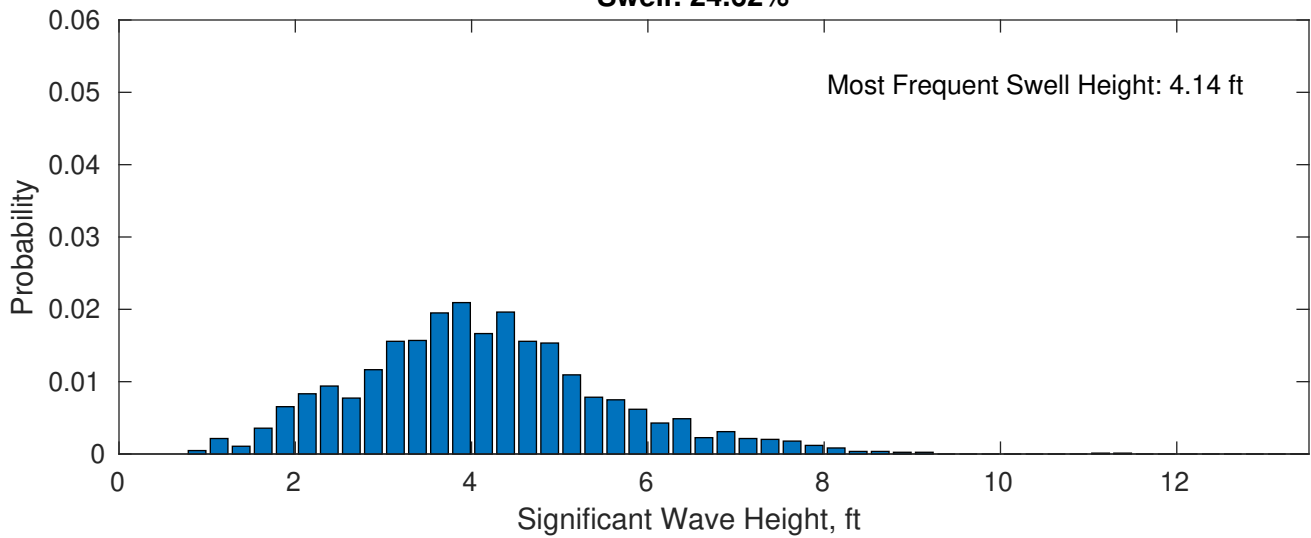
April Wave Height PDF: 1979 - 2015



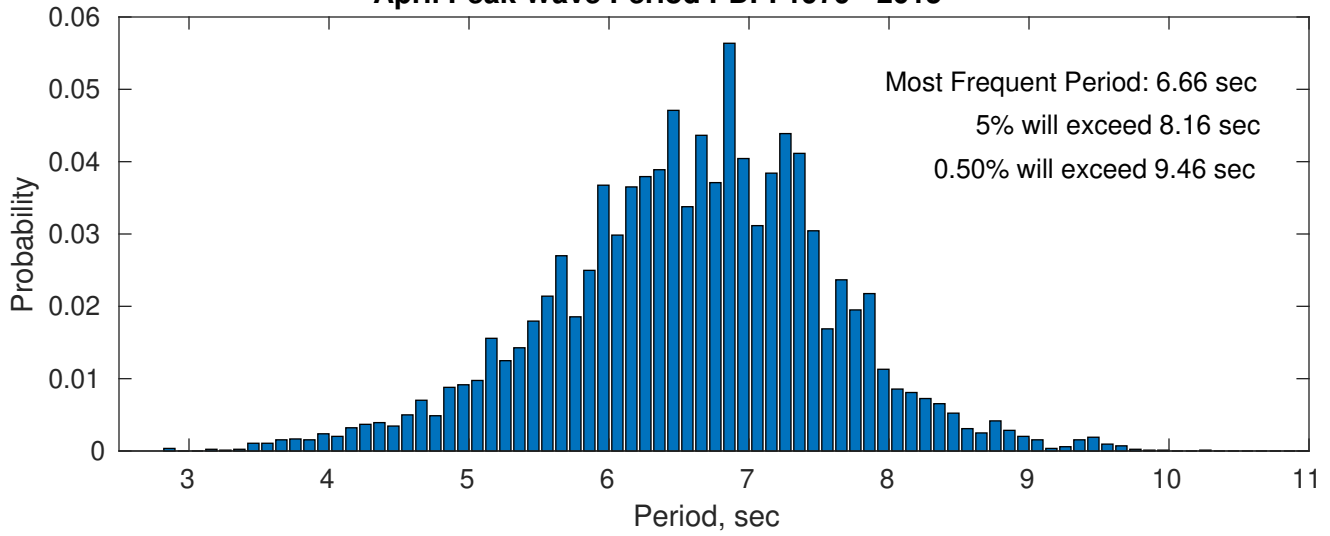
Wind-Sea: 75.38%



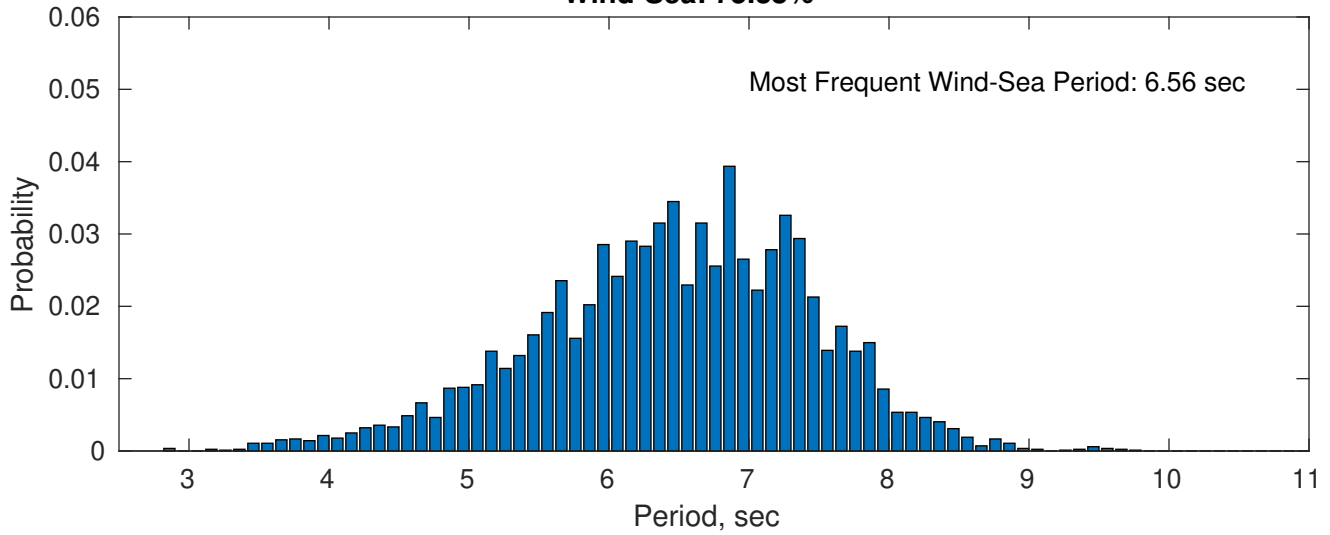
Swell: 24.62%



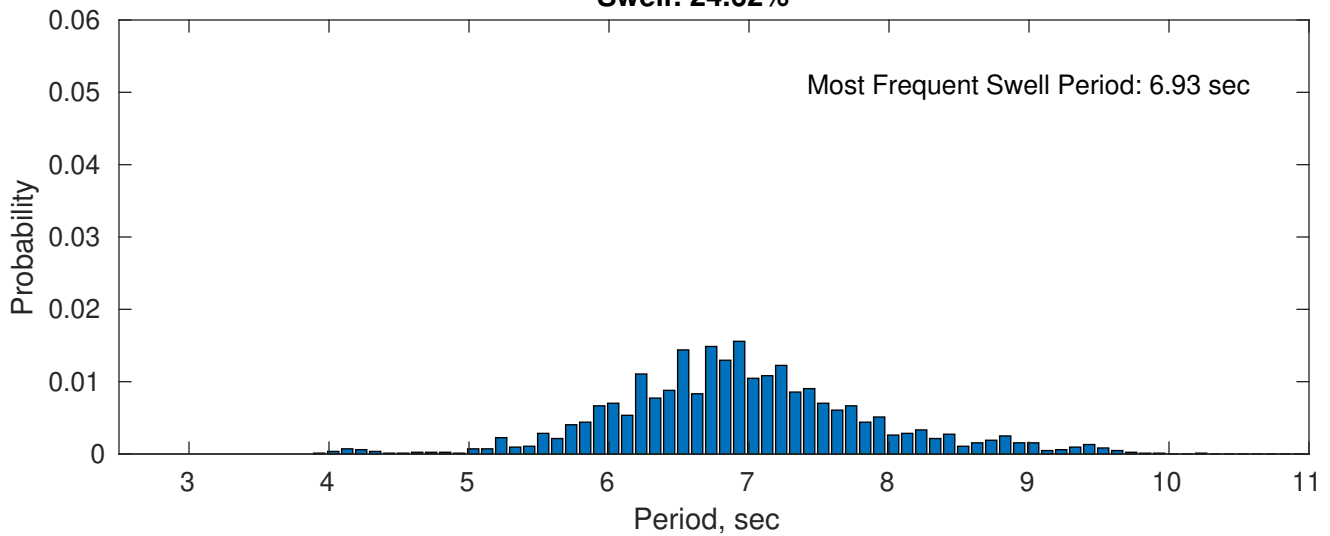
April Peak Wave Period PDF: 1979 - 2015



Wind-Sea: 75.38%

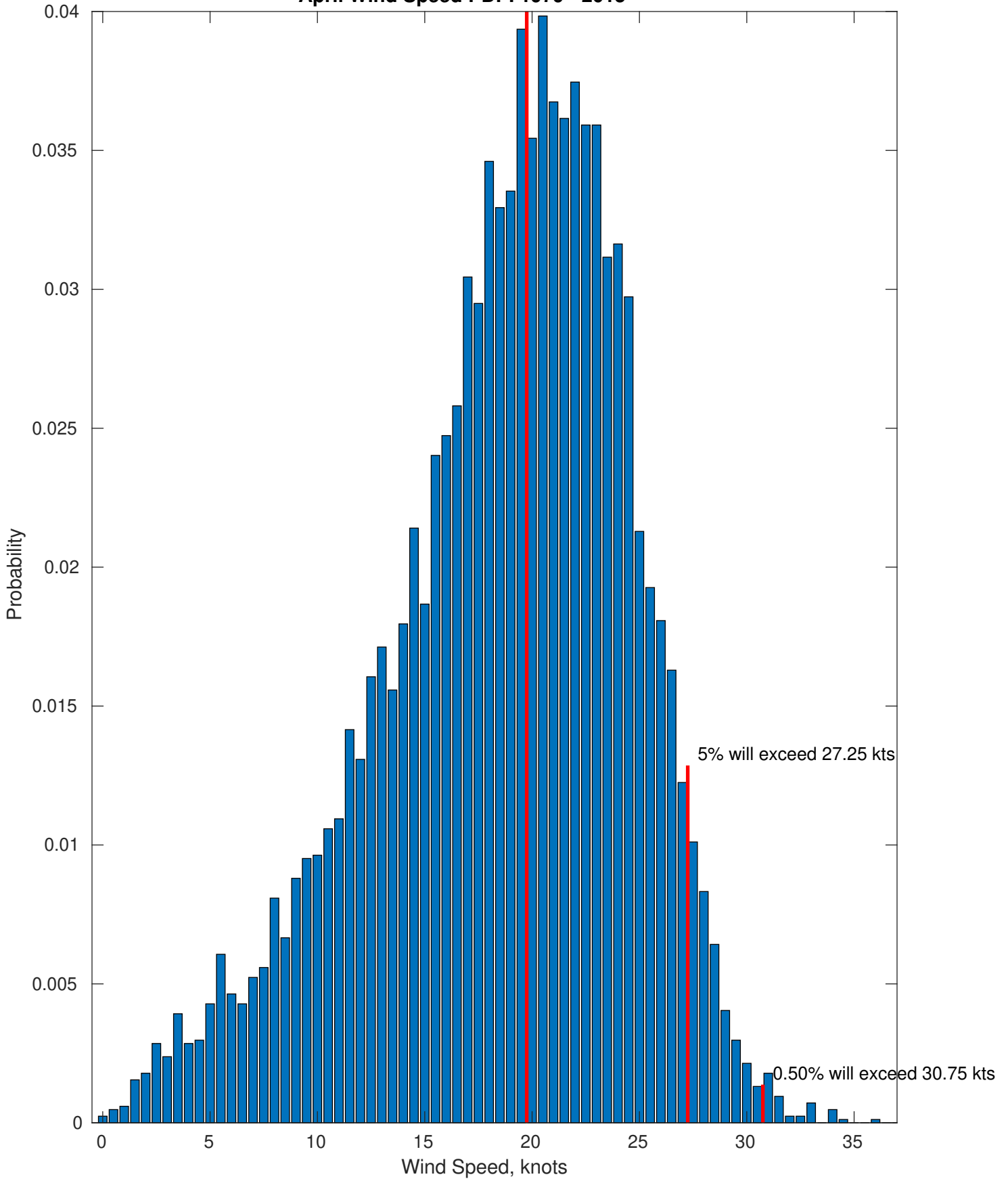


Swell: 24.62%

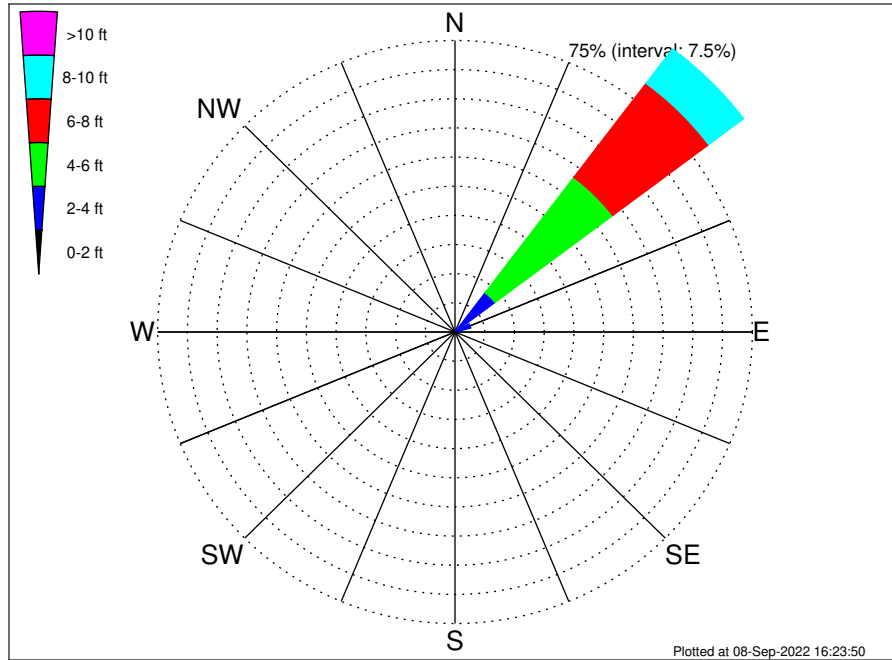


Most Frequent Wind Speed: 19.75 kts

April Wind Speed PDF: 1979 - 2015



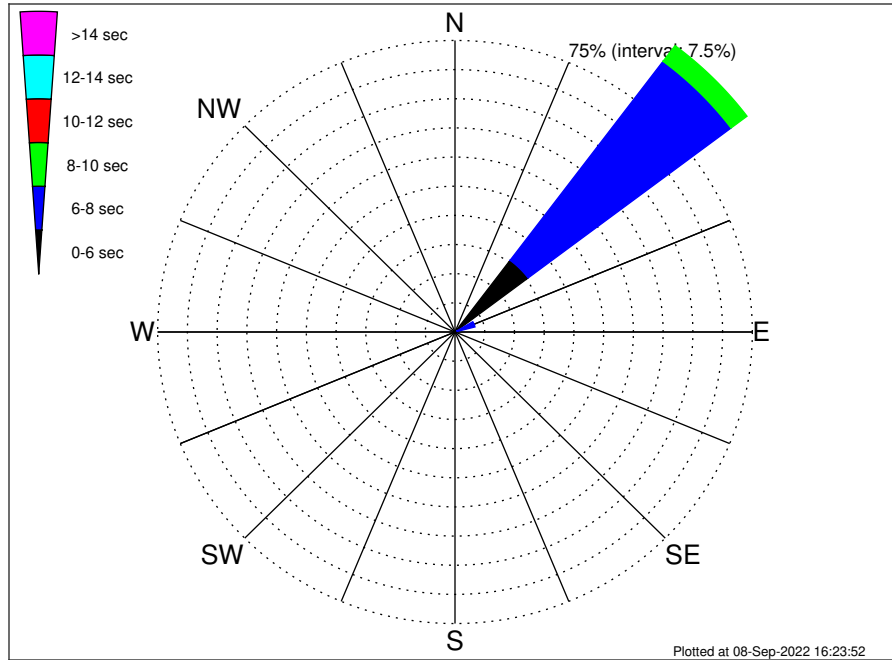
Santa Marta Colombia Climatological WaveHeight Rose for April: 1979 - 2015



Joint Frequency Distribution Table

	N	NNE	NE	E	ESE	SE	SSE	S	SSW	SW	WSW	W	WNW	NW	NNW	Total
calm	•	•	•	0.02	•	•	•	•	•	•	•	•	•	•	•	0.02
1 - 2 ft	0.06	0.12	0.37	0.48	•	•	•	•	•	•	•	•	•	0.01	•	1.03
2 - 4 ft	0.06	0.32	12.27	3.62	•	•	•	•	•	•	•	•	•	0.30	0.21	16.78
4 - 6 ft	0.02	0.11	37.16	1.83	•	•	•	•	•	•	•	•	•	0.13	0.02	39.28
6 - 8 ft	•	0.05	30.31	0.15	•	•	•	•	•	•	•	•	•	•	•	30.51
8 - 10 ft	•	0.04	11.05	0.07	•	•	•	•	•	•	•	•	•	•	•	11.15
10 - 12 ft	•	•	1.17	•	•	•	•	•	•	•	•	•	•	•	•	1.17
12 - 14 ft	•	•	0.05	•	•	•	•	•	•	•	•	•	•	•	•	0.05
14 - 16 ft	•	•	•	•	•	•	•	•	•	•	•	•	•	•	•	•
16 - 18 ft	•	•	•	•	•	•	•	•	•	•	•	•	•	•	•	•
> 18 ft	•	•	•	•	•	•	•	•	•	•	•	•	•	•	•	•
Total	0.14	0.63	92.38	6.17	•	•	•	•	•	•	•	•	•	0.44	0.24	100.00

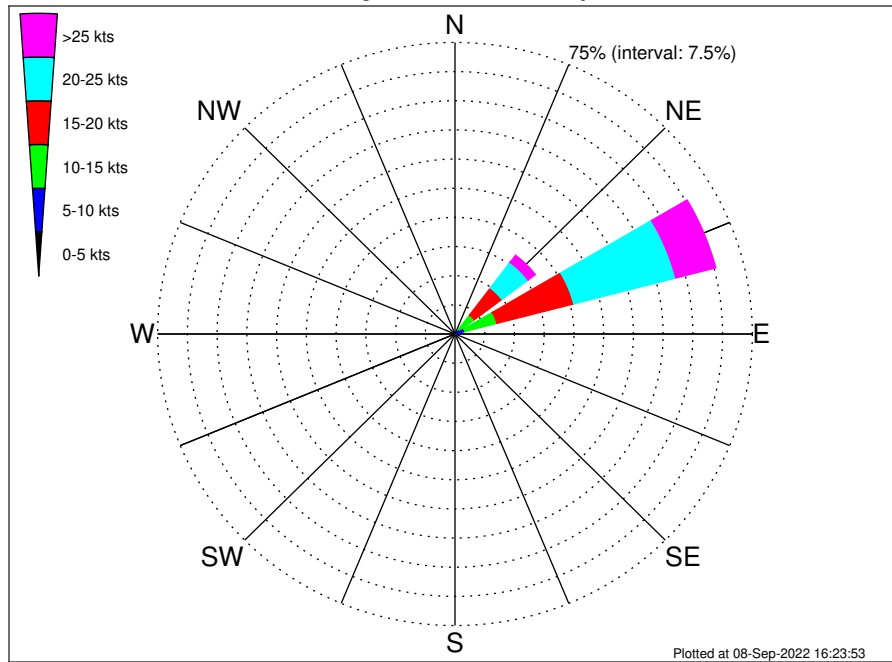
Santa Marta Colombia Climatological WavePeriod Rose for April: 1979 - 2015



Joint Frequency Distribution Table

	N	NNE	NE	E	ESE	SE	SSE	S	SSW	SW	WSW	W	WNW	NW	NNW	Total
calm
1 - 2 sec
2 - 4 sec	.	0.12	0.73	0.84
4 - 6 sec	.	0.20	22.38	0.59	0.04	23.21
6 - 8 sec	0.14	0.26	64.09	4.61	0.14	0.11	69.35
8 - 10 sec	.	0.05	5.04	0.95	0.27	0.08	6.40
10 - 12 sec	.	.	.	0.01	0.02	0.01	0.05
12 - 14 sec	.	.	0.05	0.05
14 - 16 sec	.	.	0.08	0.08
18 - 20 sec	.	.	0.01	0.01
22 - 24 sec
Total	0.14	0.63	92.38	6.17	0.44	0.24	100.00

Santa Marta Colombia Climatological Wind Rose for April: 1979 - 2015



Joint Frequency Distribution Table

	N	NNE	NE	ENE	E	ESE	SE	SSE	S	SSW	SW	WSW	W	WNW	NW	NNW	Total
calm	•	0.01	•	•	•	0.01	•	•	0.01	0.01	0.01	•	•	•	•	•	0.07
0 - 5 kts	0.11	0.10	0.20	0.38	0.26	0.26	0.19	0.06	0.06	0.04	0.05	0.07	0.02	0.05	0.04	0.01	1.89
5 - 10 kts	0.10	0.63	1.31	2.22	1.26	0.24	0.10	0.04	0.11	0.11	0.06	0.02	•	0.01	0.02	0.10	6.31
10 - 15 kts	0.01	0.33	4.59	8.31	1.31	0.01	•	•	0.02	0.05	0.01	•	•	•	•	•	14.65
15 - 20 kts	•	0.01	8.70	20.03	0.62	•	•	•	•	•	•	•	•	•	•	•	29.36
20 - 25 kts	•	•	8.28	26.59	0.13	•	•	•	•	•	•	•	•	•	•	•	35.00
25 - 30 kts	•	•	2.19	9.69	0.02	•	•	•	•	•	•	•	•	•	•	•	11.90
30 - 35 kts	•	•	0.10	0.70	•	•	•	•	•	•	•	•	•	•	•	•	0.80
35 - 40 kts	•	•	•	0.01	•	•	•	•	•	•	•	•	•	•	•	•	0.01
40 - 45 kts	•	•	•	•	•	•	•	•	•	•	•	•	•	•	•	•	•
45 - 50 kts	•	•	•	•	•	•	•	•	•	•	•	•	•	•	•	•	•
Total	0.21	1.08	25.37	67.94	3.60	0.52	0.29	0.10	0.20	0.20	0.13	0.11	0.02	0.06	0.06	0.11	100.00