

Santa Marta Colombia - February

Latitude: 11.45 N Longitude: 74.66 W

Weather Days

Wave Height > 5.0 ft Mean: 26.1 days Range: 22.8 - 29.3 days p50: 20 days p90: 20 days

Wave Height > 6.0 ft Mean: 21.5 days Range: 16.6 - 26.3 days p50: 20 days p90: 20 days

Wave Height > 7.0 ft Mean: 15.2 days Range: 10.1 - 20.3 days p50: 16 days p90: 20 days

Working Window Probability

Wave Height < 5.0 ft
3 days or longer: 18%
5 days or longer: 1%
7 days or longer: 0%

Wave Height < 6.0 ft
3 days or longer: 16%
5 days or longer: 5%
7 days or longer: 1%

Wave Height < 7.0 ft
3 days or longer: 18%
5 days or longer: 6%
7 days or longer: 4%

Waves

Mean Height: 6 - 8 ft

The wave heights will occasionally reach 10 - 12 ft, but rarely higher.

Mean Period: 6 - 8 sec

The wave periods will occasionally reach 8 - 10 sec, but rarely longer.

Principle Direction, from: NE

WindSea/Swell: 91% / 9%

Winds

Mean Speed: 20 - 25 kts

The winds will occasionally reach 30 - 35 kts, but rarely greater.

Principle Direction, from: ENE

Currents

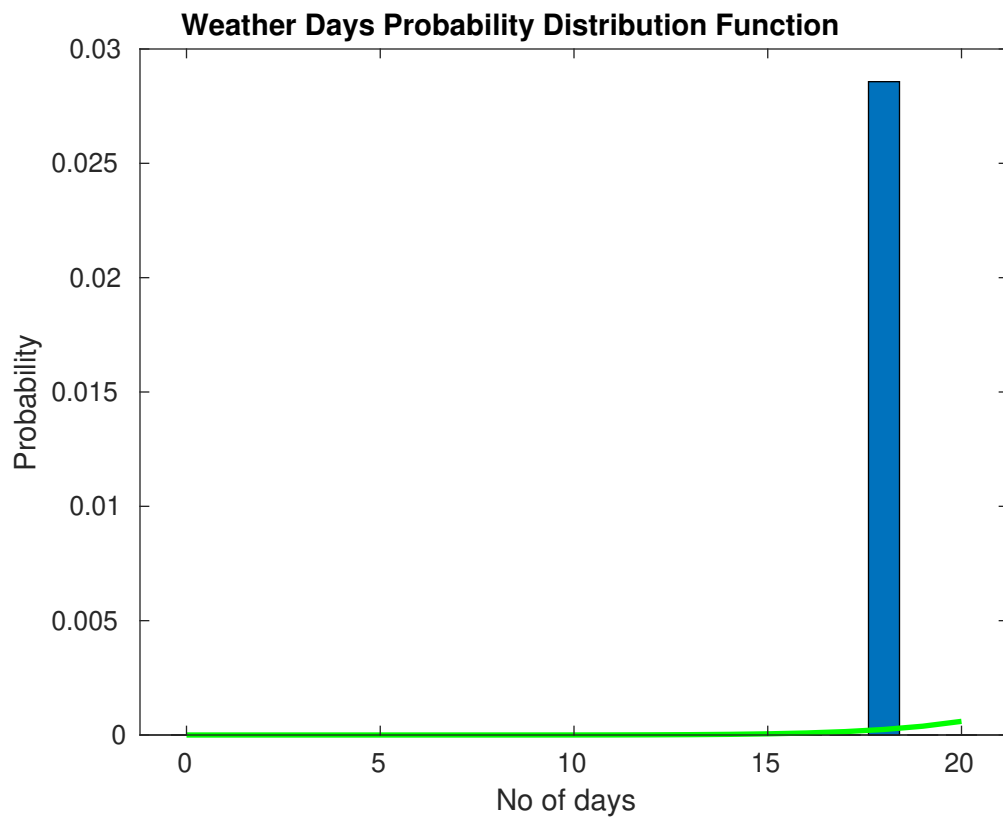
Mean Speed: 0.50-0.75 kts

The currents will occasionally reach 2.00-2.25 kts, but rarely greater.

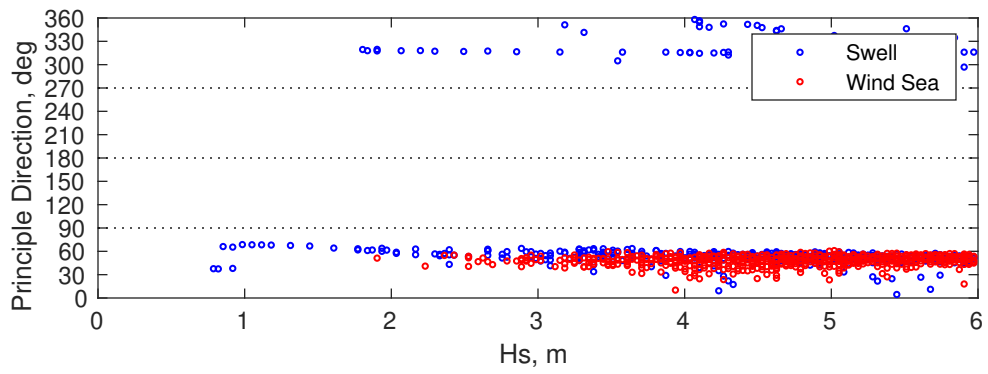
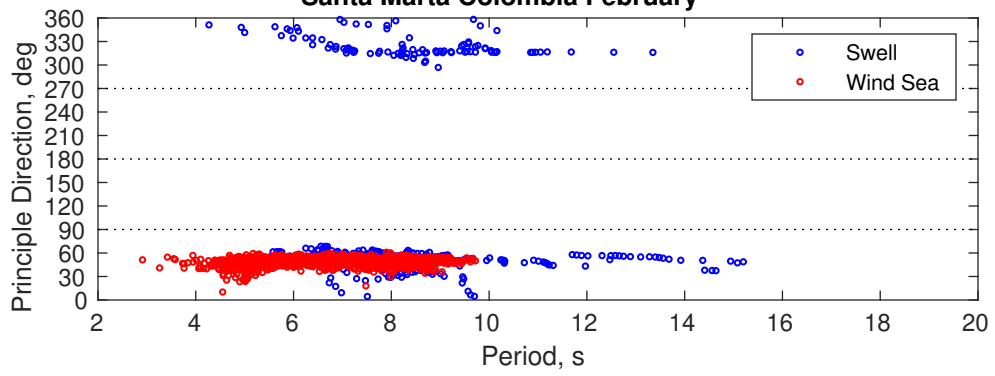
Principle Direction, to: WSW

Severe Storms

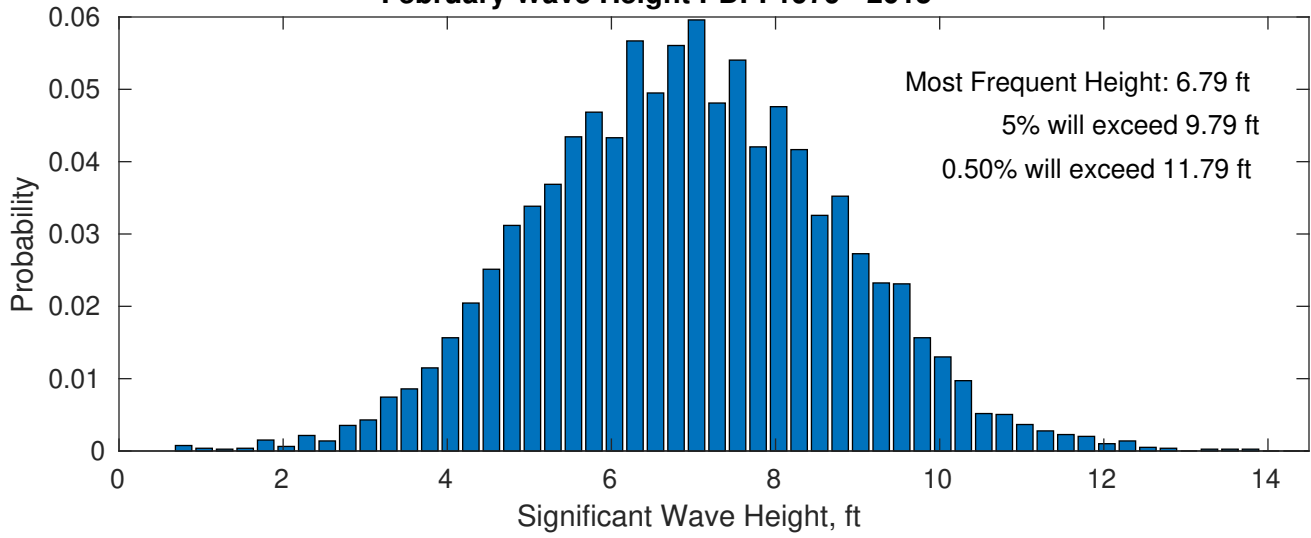
There is a 20 % chance of a storm with winds peaking above 34 kts.



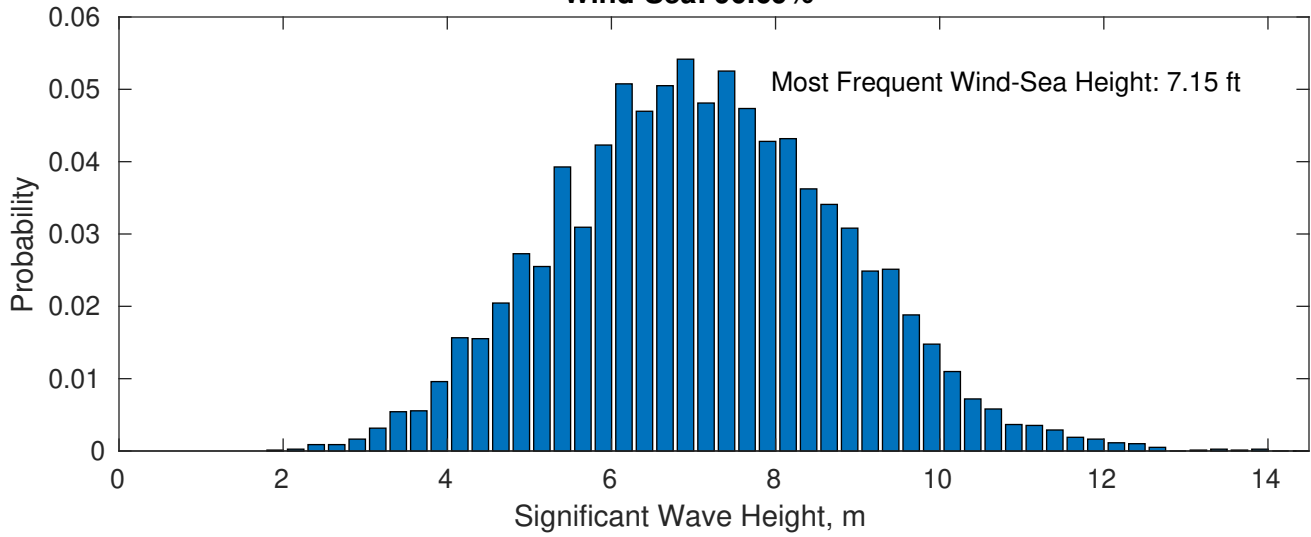
Santa Marta Colombia February



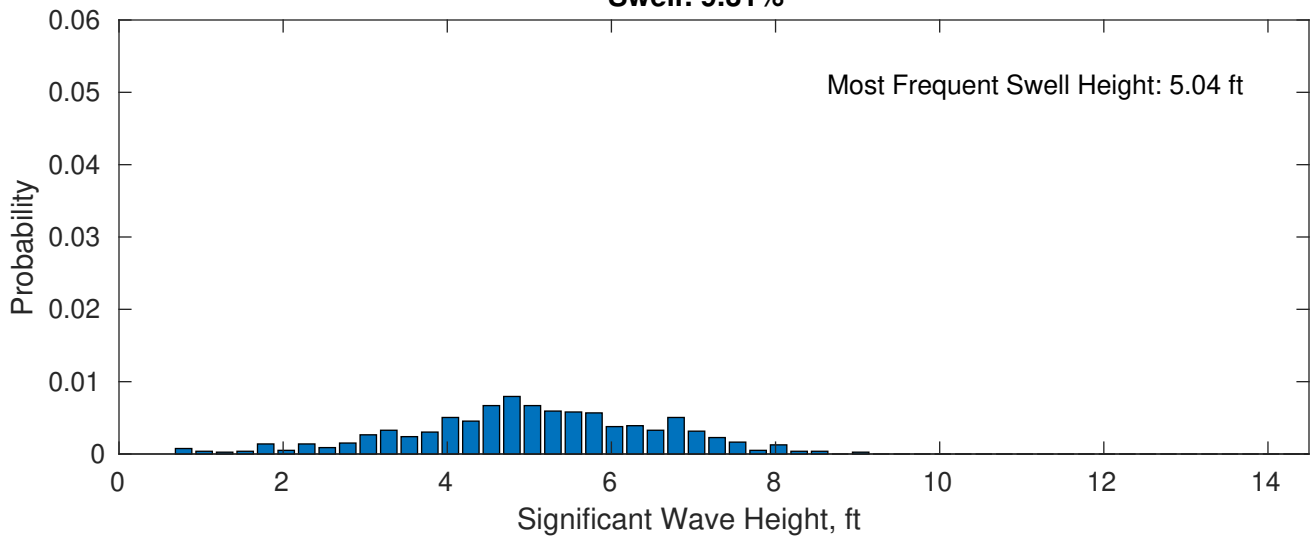
February Wave Height PDF: 1979 - 2015



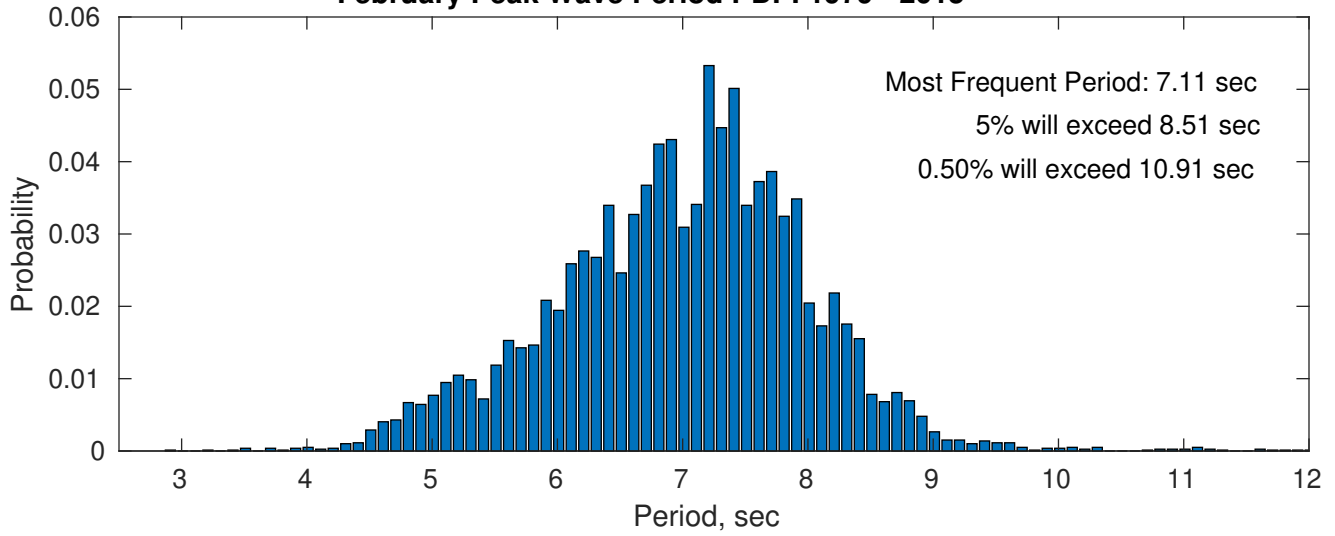
Wind-Sea: 90.69%



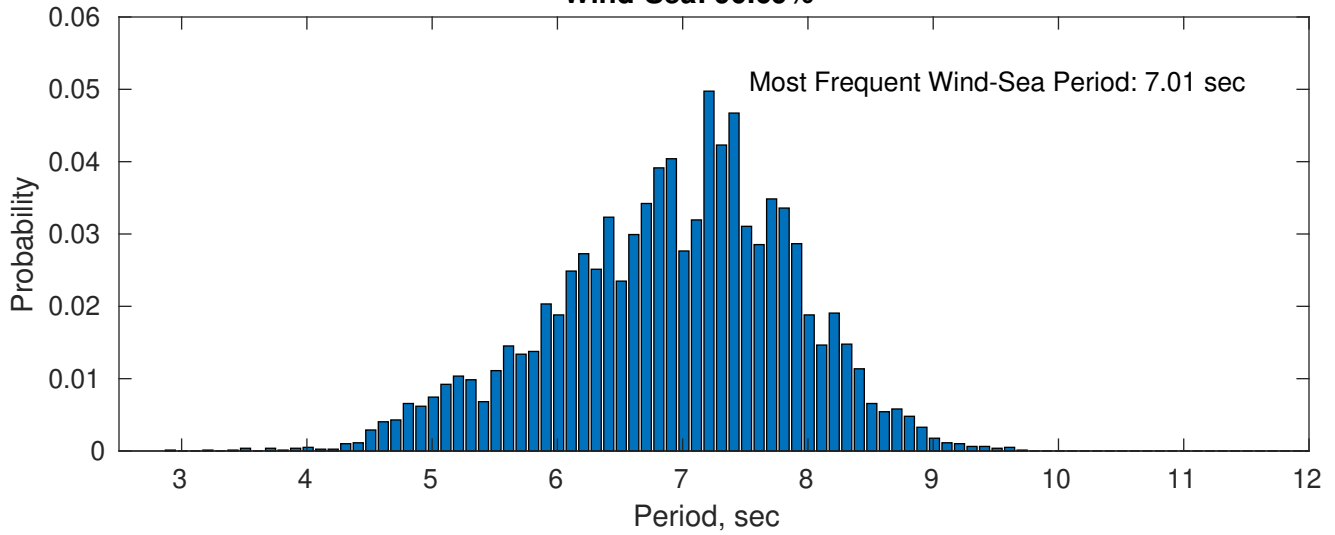
Swell: 9.31%



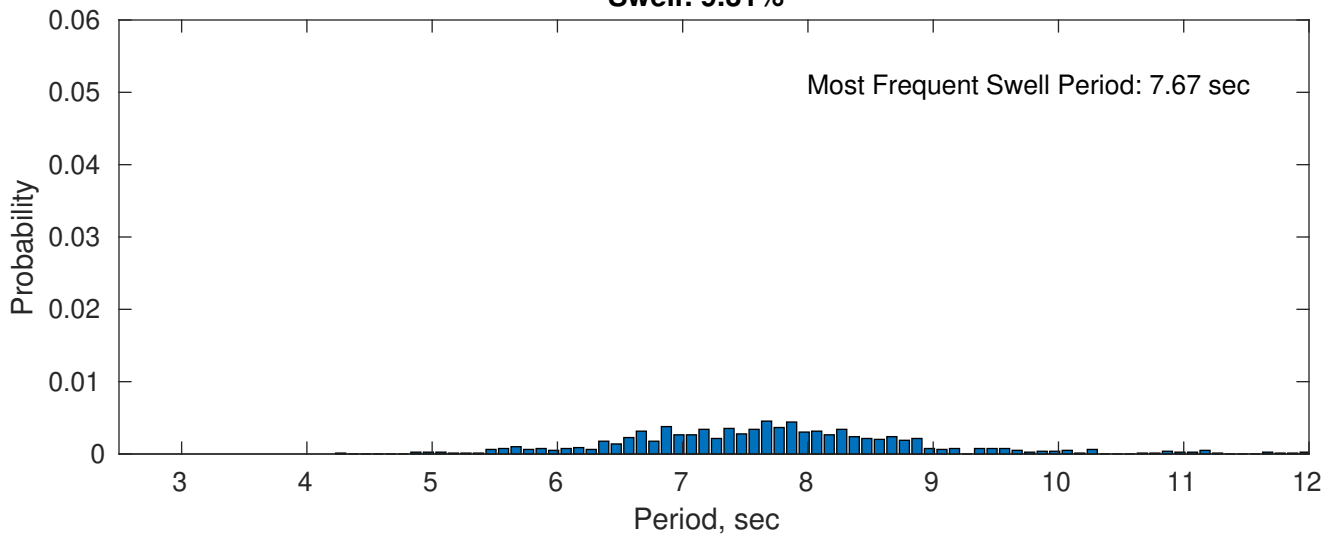
February Peak Wave Period PDF: 1979 - 2015



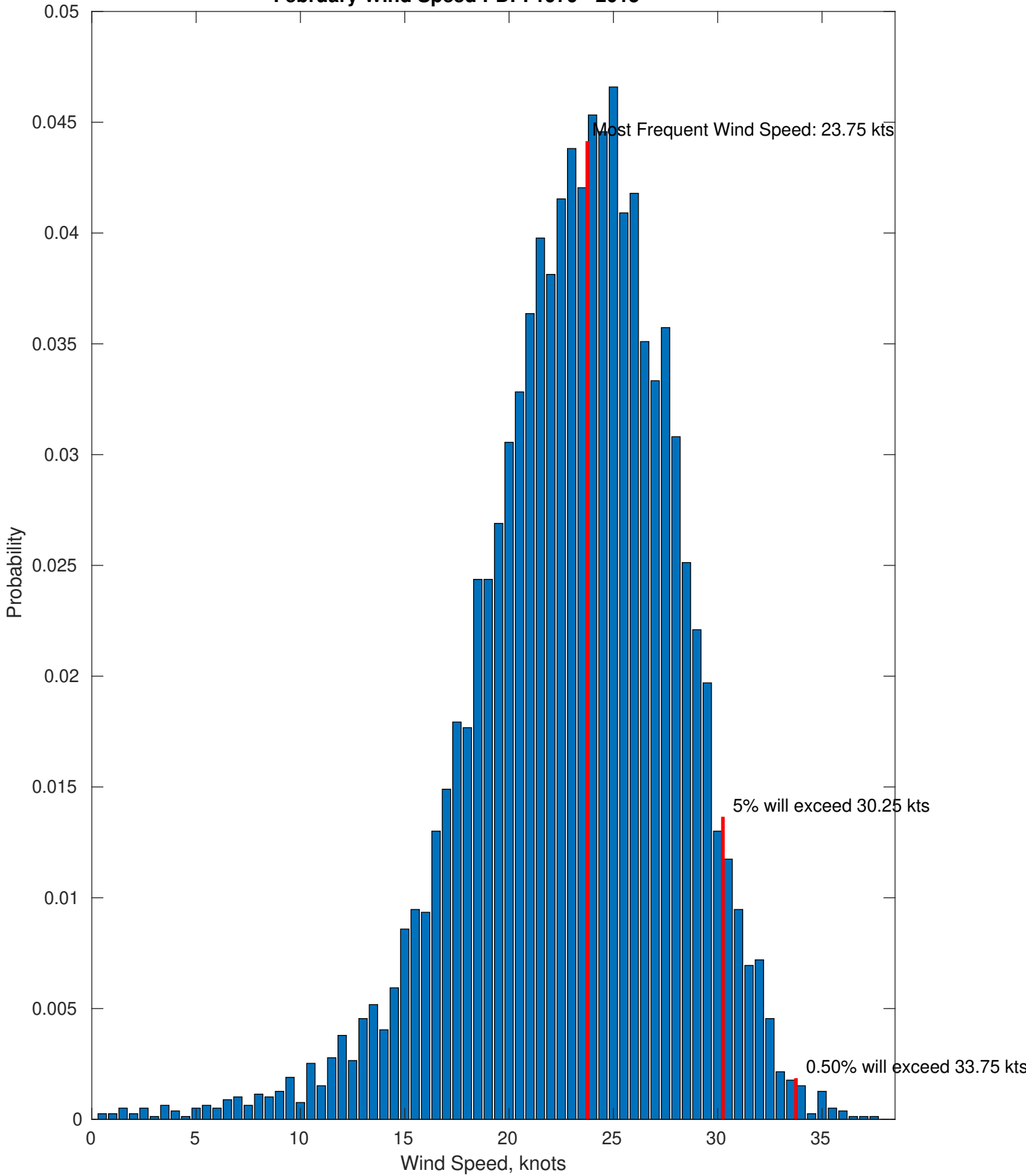
Wind-Sea: 90.69%



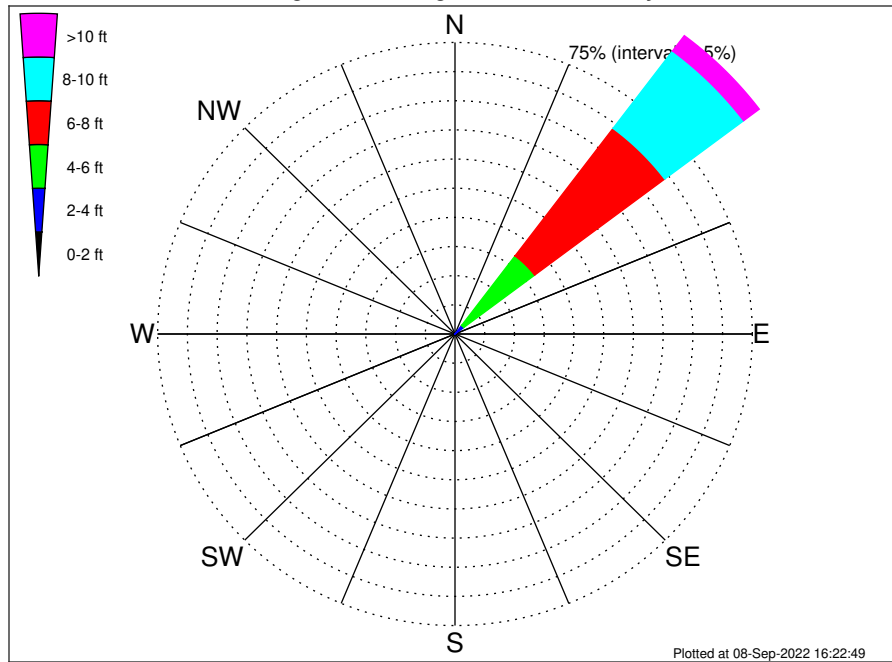
Swell: 9.31%



February Wind Speed PDF: 1979 - 2015



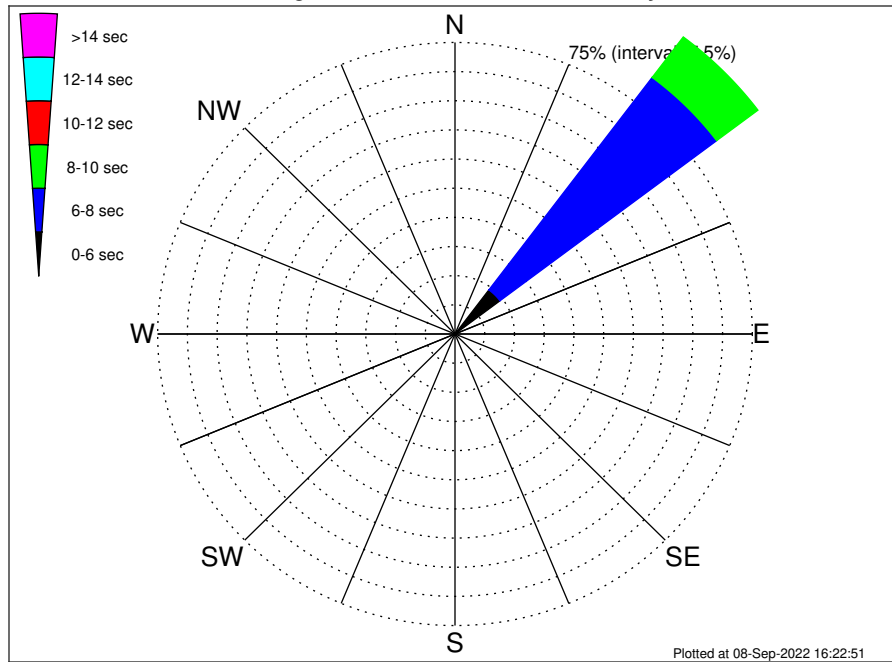
Santa Marta Colombia Climatological WaveHeight Rose for February: 1979 - 2015



Joint Frequency Distribution Table

	N	NNE	NE	E	ESE	SE	SSE	S	SSW	SW	WSW	W	WNW	NW	NNW	Total
calm	•	•	0.04	0.04	•	•	•	•	•	•	•	•	•	•	•	0.08
1 - 2 ft	•	•	0.01	0.16	•	•	•	•	•	•	•	•	•	0.05	•	0.23
2 - 4 ft	0.03	0.05	2.70	0.76	•	•	•	•	•	•	•	•	•	0.14	0.01	3.69
4 - 6 ft	0.13	0.34	22.40	0.87	•	•	•	•	•	•	•	•	0.01	0.53	0.16	24.44
6 - 8 ft	0.05	0.05	41.09	0.25	•	•	•	•	•	•	•	•	0.01	0.14	0.04	41.63
8 - 10 ft	•	0.06	24.92	•	•	•	•	•	•	•	•	•	•	•	•	24.99
10 - 12 ft	•	•	4.47	•	•	•	•	•	•	•	•	•	•	•	•	4.47
12 - 14 ft	•	•	0.42	•	•	•	•	•	•	•	•	•	•	•	•	0.42
14 - 16 ft	•	•	0.06	•	•	•	•	•	•	•	•	•	•	•	•	0.06
16 - 18 ft	•	•	•	•	•	•	•	•	•	•	•	•	•	•	•	•
> 18 ft	•	•	•	•	•	•	•	•	•	•	•	•	•	•	•	•
Total	0.20	0.51	96.11	2.08	•	•	•	•	•	•	•	•	0.03	0.86	0.21	100.00

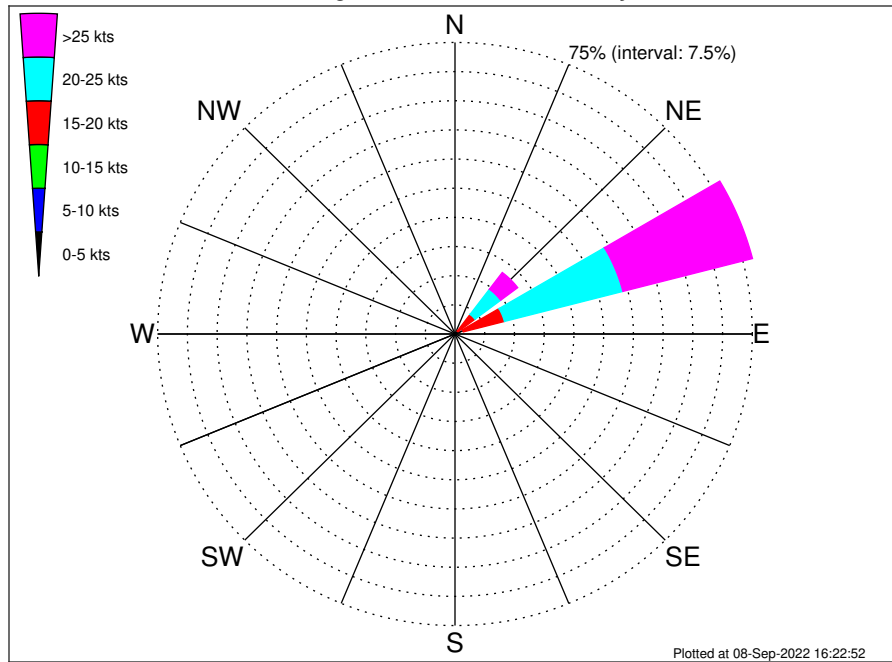
Santa Marta Colombia Climatological WavePeriod Rose for February: 1979 - 2015



Joint Frequency Distribution Table

	N	NNE	NE	ENE	E	ESE	SE	SSE	S	SSW	SW	WSW	W	WNW	NW	NNW	Total
calm
1 - 2 sec
2 - 4 sec	.	.	0.14	0.01	0.15
4 - 6 sec	0.04	0.25	14.08	0.33	0.08	14.77
6 - 8 sec	0.09	0.13	68.43	1.39	0.21	0.08	70.33
8 - 10 sec	0.08	0.13	13.03	0.25	0.03	0.48	0.05	14.04
10 - 12 sec	.	.	0.21	0.04	0.14	0.01	0.40
12 - 14 sec	.	.	0.13	0.06	0.03	.	0.21
14 - 16 sec	.	.	0.09	0.09
18 - 20 sec
22 - 24 sec
Total	0.20	0.51	96.11	2.08	0.03	0.86	0.21	100.00

Santa Marta Colombia Climatological Wind Rose for February: 1979 - 2015



Joint Frequency Distribution Table

	N	NNE	NE	ENE	E	ESE	SE	SSE	S	SSW	SW	WSW	W	WNW	NW	NNW	Total
calm	•	•	0.01	0.01	•	•	•	•	•	•	•	•	•	•	•	•	0.03
0 - 5 kts	0.01	0.01	0.01	0.01	0.05	0.05	0.01	0.03	0.01	0.03	•	0.01	•	•	0.03	0.01	0.28
5 - 10 kts	0.03	0.08	0.13	0.35	0.15	0.03	0.03	•	0.01	0.01	0.06	0.01	0.01	0.01	0.04	•	0.95
10 - 15 kts	0.03	0.20	0.83	1.79	0.48	0.01	•	•	•	•	•	•	•	0.01	0.01	•	3.37
15 - 20 kts	0.04	0.14	5.33	10.71	0.44	•	•	•	•	•	•	•	•	•	•	•	16.65
20 - 25 kts	•	0.04	8.12	30.87	0.47	•	•	•	•	•	•	•	•	•	•	•	39.49
25 - 30 kts	•	•	4.79	28.24	0.09	•	•	•	•	•	•	•	•	•	•	•	33.12
30 - 35 kts	•	•	0.57	5.29	•	•	•	•	•	•	•	•	•	•	•	•	5.86
35 - 40 kts	•	•	0.03	0.23	•	•	•	•	•	•	•	•	•	•	•	•	0.25
40 - 45 kts	•	•	•	•	•	•	•	•	•	•	•	•	•	•	•	•	•
45 - 50 kts	•	•	•	•	•	•	•	•	•	•	•	•	•	•	•	•	•
Total	0.10	0.47	19.81	77.51	1.68	0.09	0.04	0.03	0.03	0.04	0.06	0.03	0.01	0.03	0.08	0.01	100.00