

Santa Marta Colombia - March

Latitude: 11.45 N Longitude: 74.66 W

Weather Days

Wave Height > 5.0 ft Mean: 23.7 days Range: 19.5 - 27.9 days p50: 20 days p90: 20 days

Wave Height > 6.0 ft Mean: 18.4 days Range: 13.1 - 23.6 days p50: 19 days p90: 20 days

Wave Height > 7.0 ft Mean: 12.3 days Range: 7.3 - 17.2 days p50: 13 days p90: 20 days

Working Window Probability

Wave Height < 5.0 ft 3 days or longer: 21%

5 days or longer: 5%

7 days or longer: 1%

Wave Height < 6.0 ft 3 days or longer: 17%

5 days or longer: 7%

7 days or longer: 3%

Wave Height < 7.0 ft 3 days or longer: 20%

5 days or longer: 10%

7 days or longer: 5%

Waves

Mean Height: 6 - 8 ft

The wave heights will occasionally reach 10 - 12 ft, but rarely higher.

Mean Period: 6 - 8 sec

The wave periods will occasionally reach 8 - 10 sec, but rarely longer.

Principle Direction, from: NE

WindSea/Swell: 88% / 12%

Winds

Mean Speed: 20 - 25 kts

The winds will occasionally reach 30 - 35 kts, but rarely greater.

Principle Direction, from: ENE

Currents

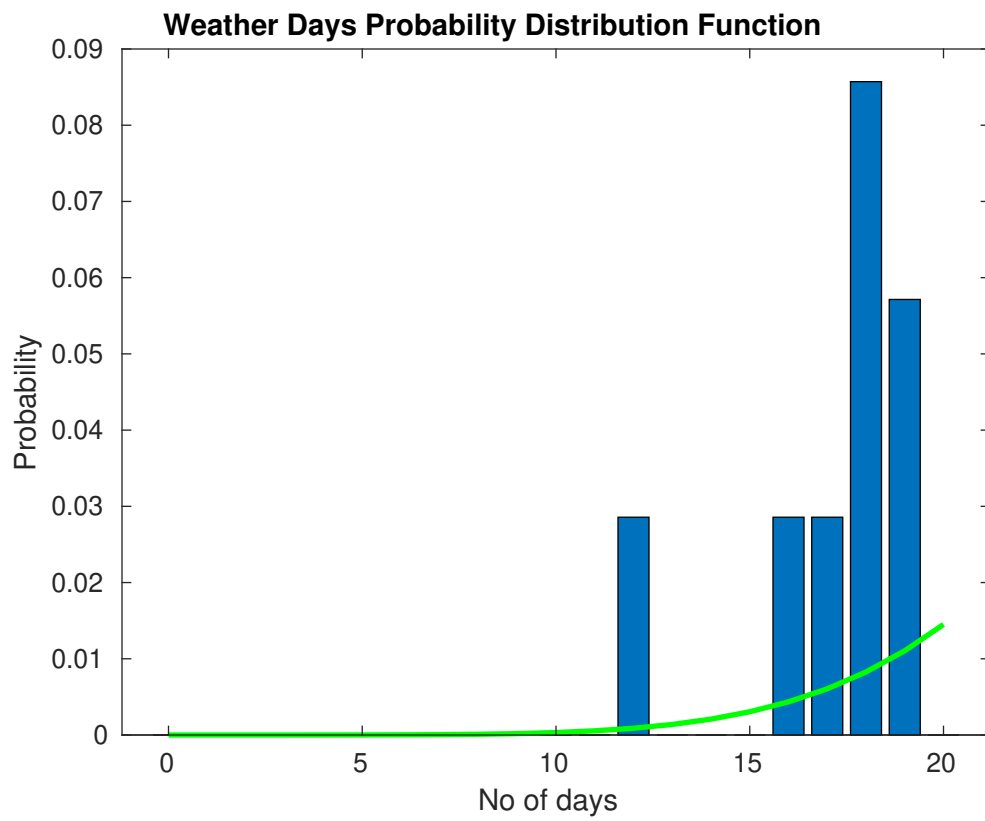
Mean Speed: 0.50-0.75 kts

The currents will occasionally reach 2.00-2.25 kts, but rarely greater.

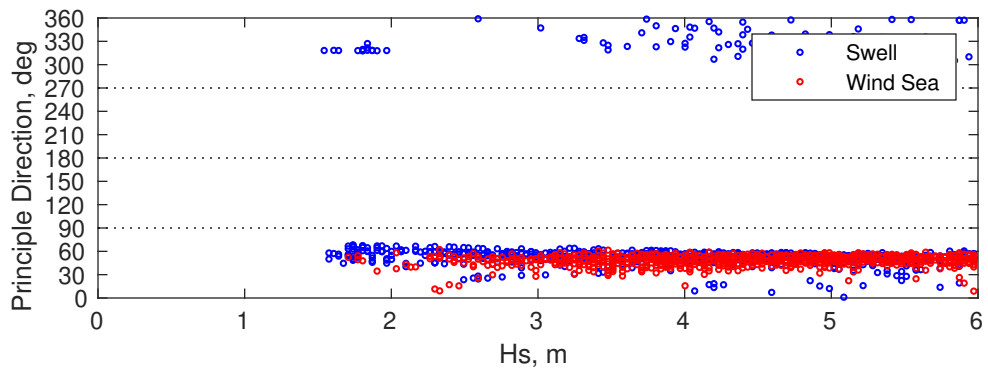
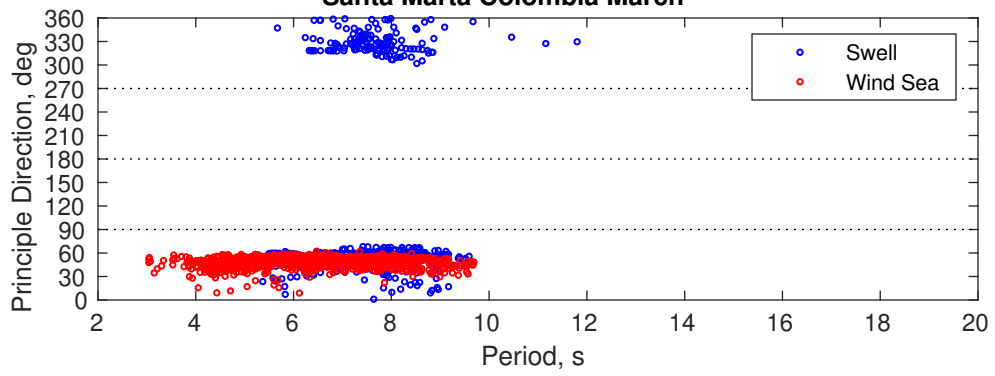
Principle Direction, to: WSW

Severe Storms

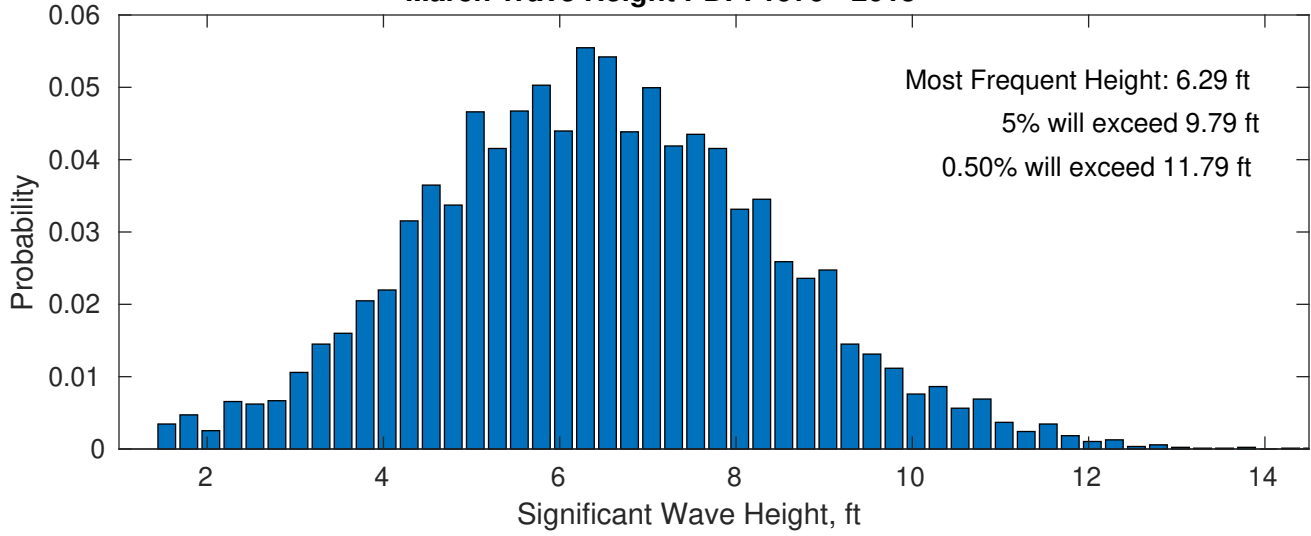
There is a 26 % chance of a storm with winds peaking above 34 kts.



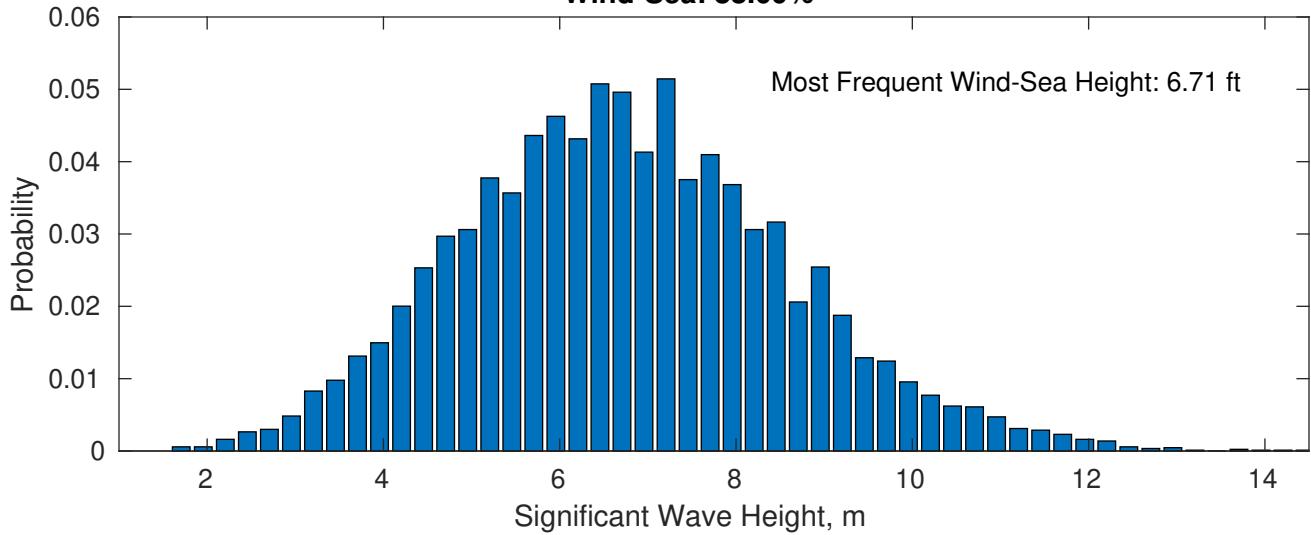
Santa Marta Colombia March



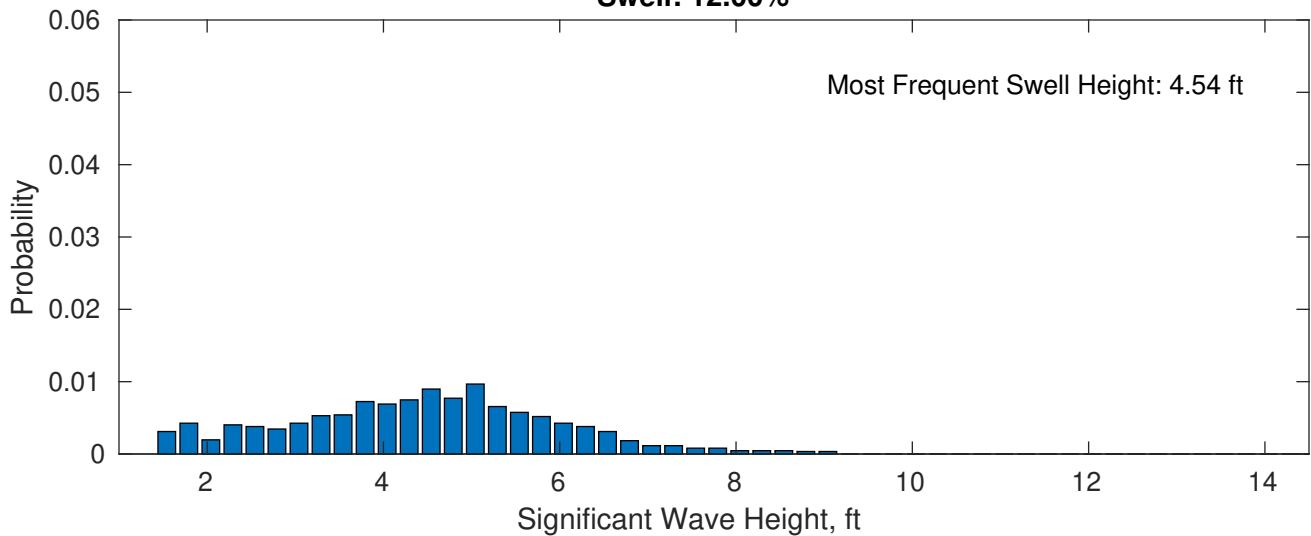
March Wave Height PDF: 1979 - 2015



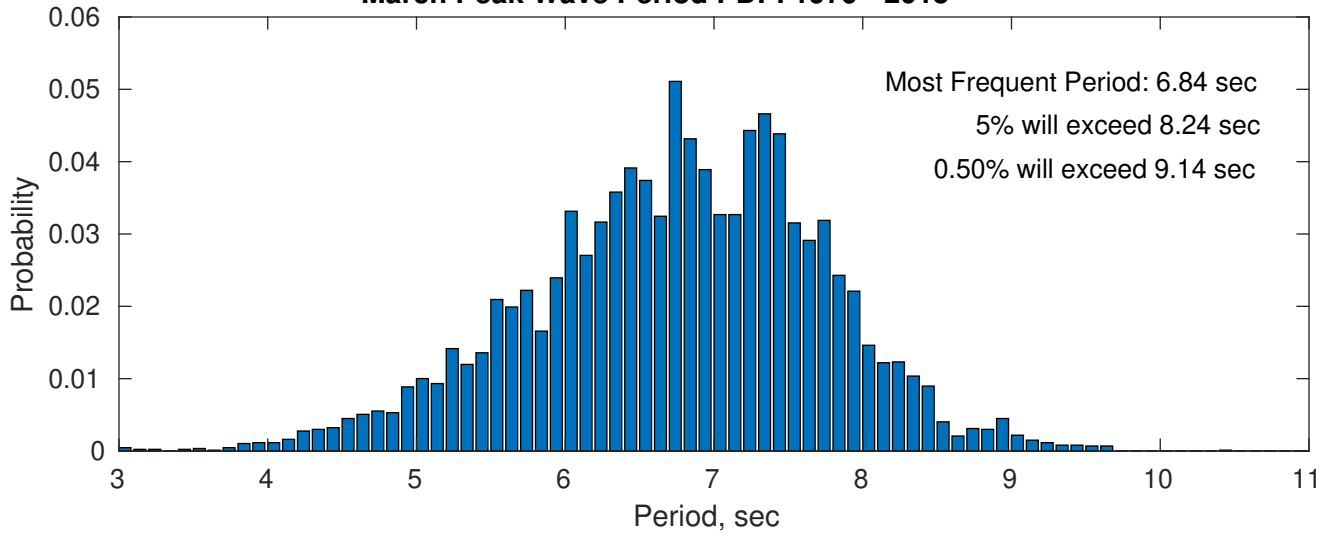
Wind-Sea: 88.00%



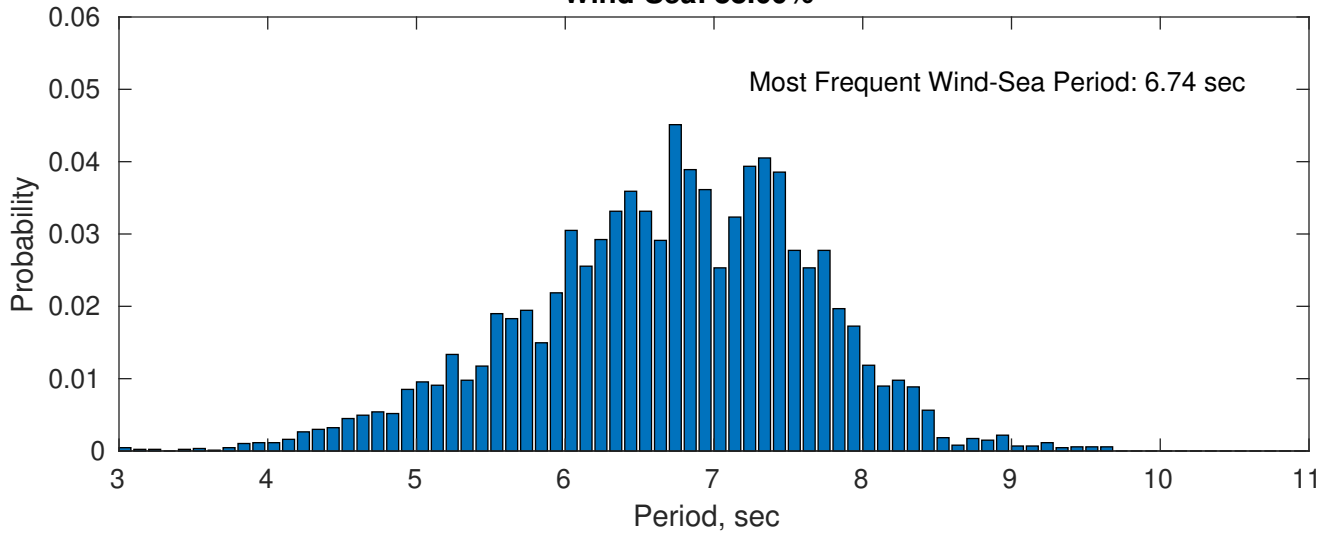
Swell: 12.00%



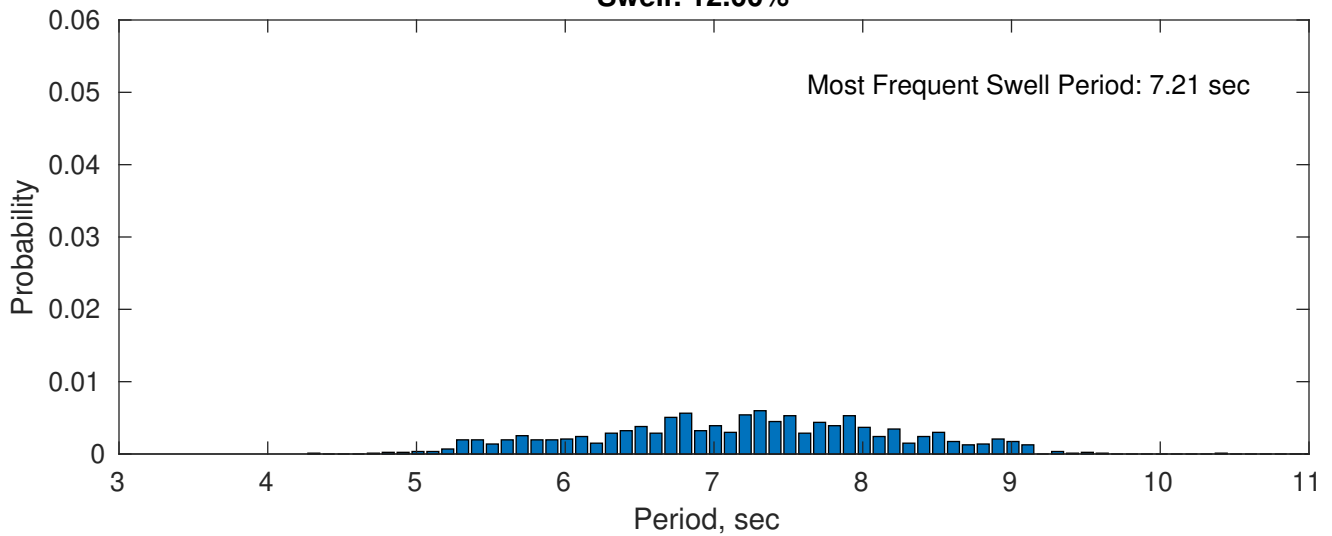
March Peak Wave Period PDF: 1979 - 2015



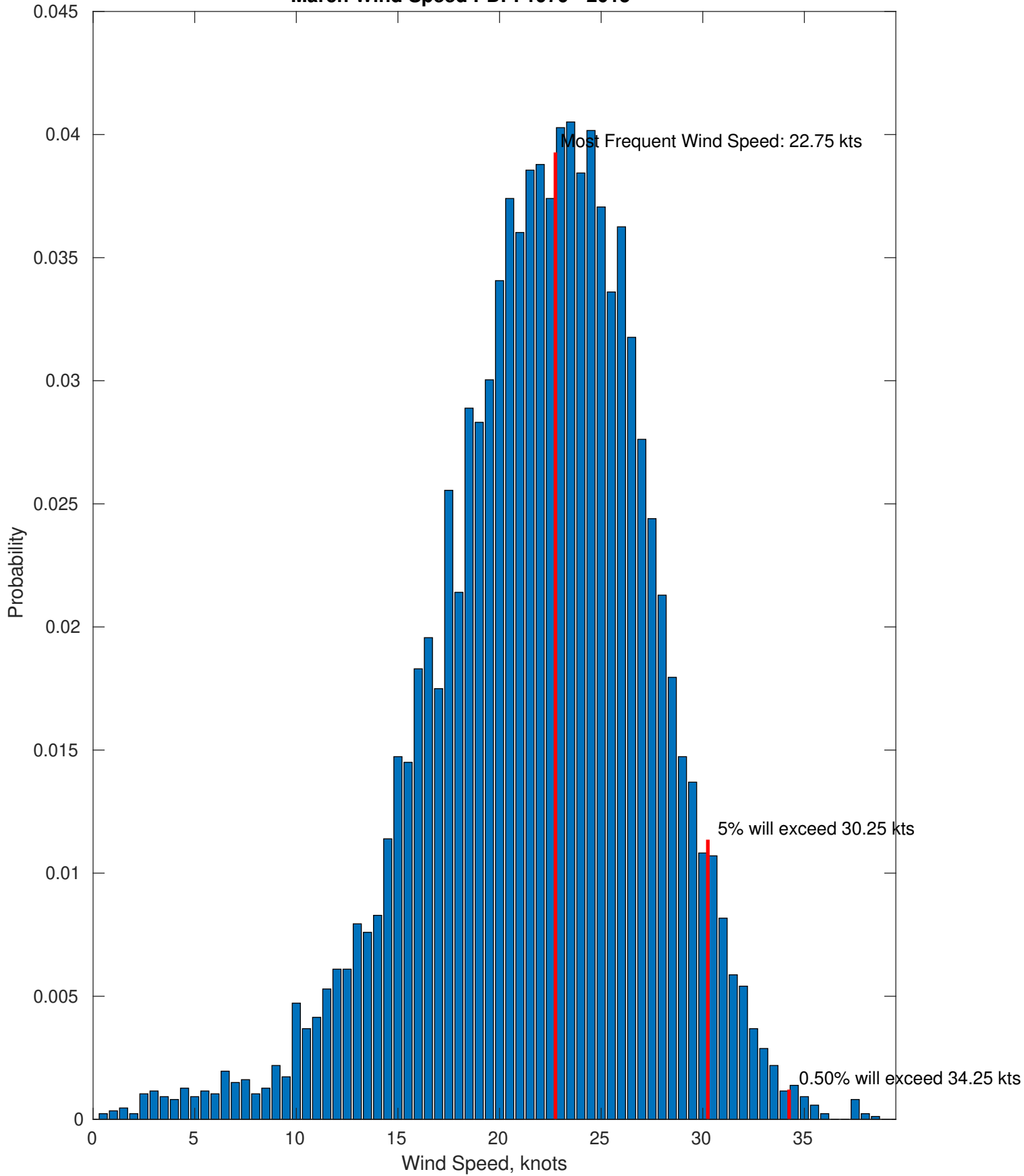
Wind-Sea: 88.00%



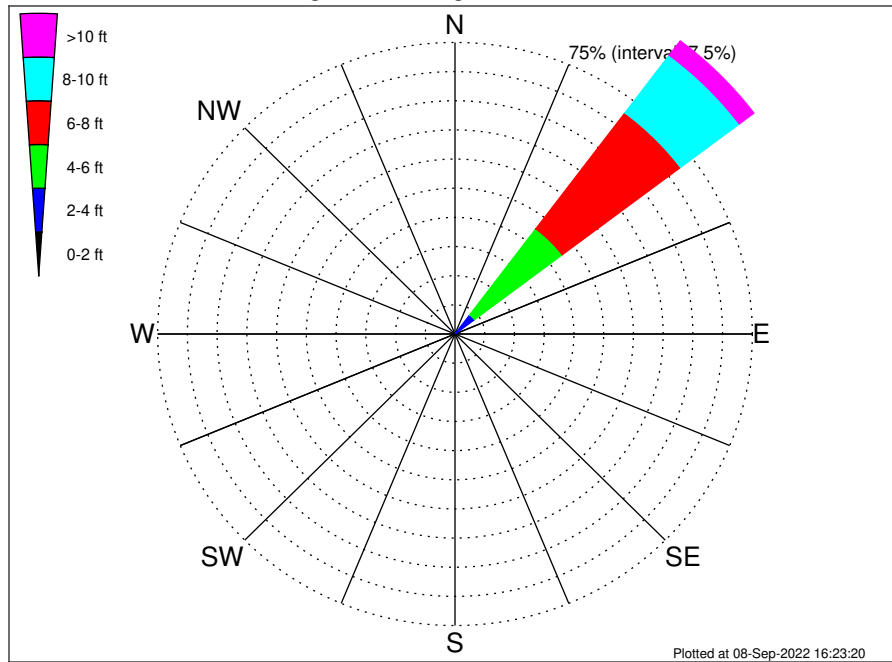
Swell: 12.00%



March Wind Speed PDF: 1979 - 2015



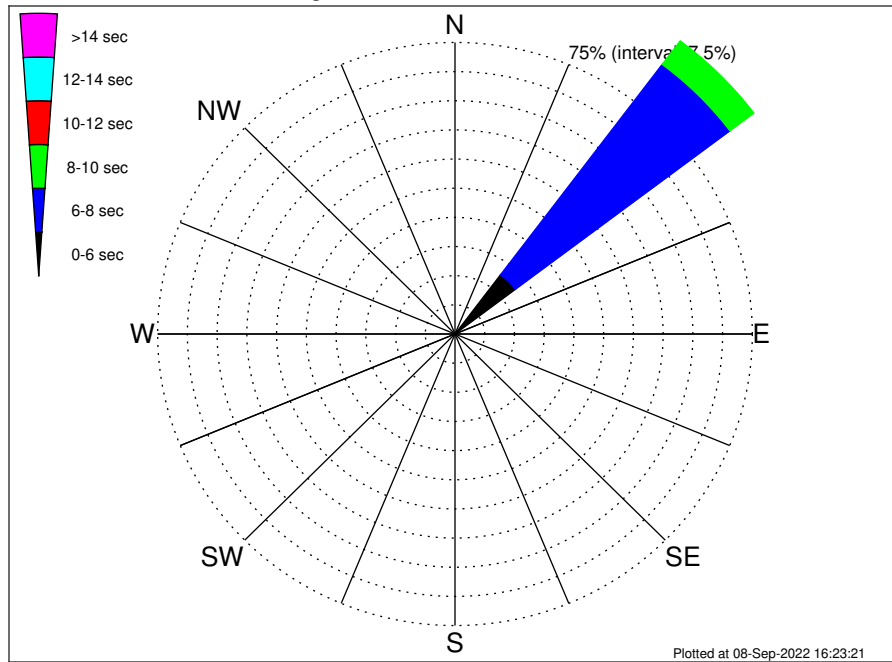
Santa Marta Colombia Climatological WaveHeight Rose for March: 1979 - 2015



Joint Frequency Distribution Table

	N	NNE	NE	E	ESE	SE	SSE	S	SSW	SW	WSW	W	WNW	NW	NNW	Total
calm	•	•	•	•	•	•	•	•	•	•	•	•	•	•	•	•
1 - 2 ft	•	•	0.25	0.33	•	•	•	•	•	•	•	•	•	0.15	0.01	0.75
2 - 4 ft	0.05	0.29	5.92	1.52	•	•	•	•	•	•	•	•	•	0.05	0.09	7.91
4 - 6 ft	0.14	0.28	27.70	1.06	•	•	•	•	•	•	•	•	0.01	0.45	0.45	30.08
6 - 8 ft	•	0.01	37.36	0.39	•	•	•	•	•	•	•	•	•	0.12	0.03	37.91
8 - 10 ft	0.05	0.05	18.58	0.02	•	•	•	•	•	•	•	•	•	0.02	0.01	18.72
10 - 12 ft	•	0.03	4.12	•	•	•	•	•	•	•	•	•	•	•	•	4.15
12 - 14 ft	•	•	0.45	•	•	•	•	•	•	•	•	•	•	•	•	0.45
14 - 16 ft	•	•	0.02	•	•	•	•	•	•	•	•	•	•	•	•	0.02
16 - 18 ft	•	•	•	•	•	•	•	•	•	•	•	•	•	•	•	•
> 18 ft	•	•	•	•	•	•	•	•	•	•	•	•	•	•	•	•
Total	0.23	0.66	94.40	3.33	•	•	•	•	•	•	•	•	0.01	0.78	0.60	100.00

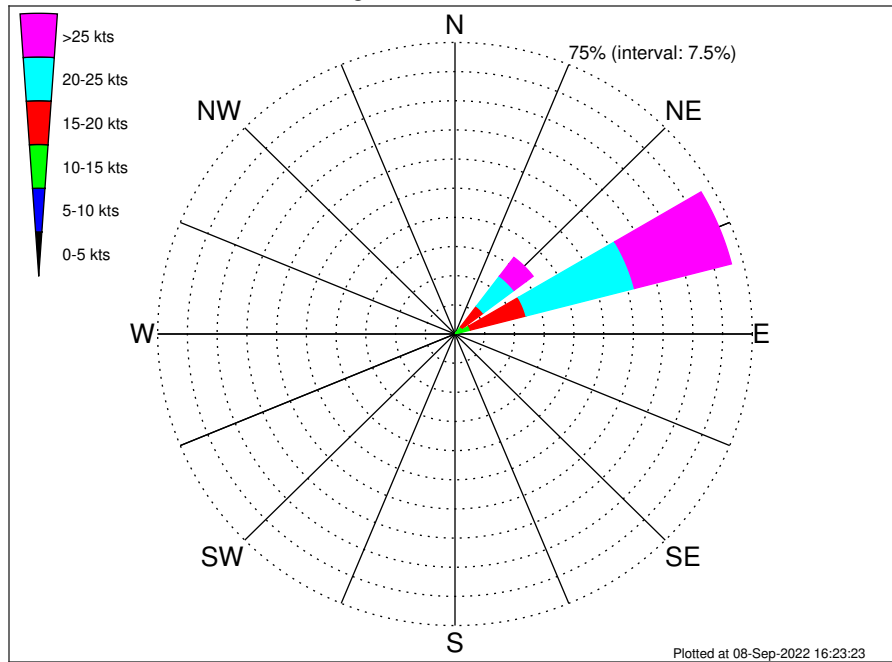
Santa Marta Colombia Climatological WavePeriod Rose for March: 1979 - 2015



Joint Frequency Distribution Table

	N	NNE	NE	E	ESE	SE	SSE	S	SSW	SW	WSW	W	WNW	NW	NNW	Total
calm
1 - 2 sec
2 - 4 sec	.	0.02	0.29	0.01	0.32
4 - 6 sec	0.02	0.29	18.81	0.59	0.01	19.71
6 - 8 sec	0.15	0.15	67.76	1.83	0.58	0.45	70.92
8 - 10 sec	0.06	0.20	7.54	0.90	0.01	0.21	0.10	9.01
10 - 12 sec	0.03	0.03
12 - 14 sec
14 - 16 sec
18 - 20 sec
22 - 24 sec
Total	0.23	0.66	94.40	3.33	0.01	0.78	0.60	100.00

Santa Marta Colombia Climatological Wind Rose for March: 1979 - 2015



Joint Frequency Distribution Table

	N	NNE	NE	ENE	E	ESE	SE	SSE	S	SSW	SW	WSW	W	WNW	NW	NNW	Total
calm	•	•	•	•	•	•	0.01	0.01	•	•	•	•	•	•	•	•	0.02
0 - 5 kts	0.03	0.02	0.02	0.10	0.14	0.12	0.05	0.02	0.07	0.01	•	•	0.01	0.02	•	•	0.62
5 - 10 kts	0.06	0.14	0.24	0.46	0.36	0.06	0.03	•	•	0.01	•	0.02	0.01	0.01	0.02	0.01	1.44
10 - 15 kts	0.05	0.39	2.09	3.45	0.53	•	•	•	•	•	•	•	•	•	•	0.01	6.53
15 - 20 kts	0.02	0.23	6.59	14.50	0.53	•	•	•	•	•	•	•	•	•	•	•	21.88
20 - 25 kts	0.01	0.02	9.68	28.25	0.20	•	•	•	•	•	•	•	•	•	•	•	38.16
25 - 30 kts	•	•	5.19	20.59	0.06	•	•	•	•	•	•	•	•	•	•	•	25.84
30 - 35 kts	•	•	0.84	4.38	•	•	•	•	•	•	•	•	•	•	•	•	5.22
35 - 40 kts	•	•	0.01	0.28	•	•	•	•	•	•	•	•	•	•	•	•	0.29
40 - 45 kts	•	•	•	•	•	•	•	•	•	•	•	•	•	•	•	•	•
45 - 50 kts	•	•	•	•	•	•	•	•	•	•	•	•	•	•	•	•	•
Total	0.17	0.81	24.67	72.02	1.81	0.17	0.09	0.03	0.07	0.02	•	0.02	0.02	0.03	0.02	0.02	100.00