

# Staatsolie Suriname MBES-SGE Seep Program - April

Latitude: 8.45 N Longitude: 53.44 W

## Weather Days

Wave Height > 6.0 ft Mean: 23.1 days Range: 19.8 - 26.5 days p50:27 days p75:25 days p90:21.5 days

Wave Height > 7.0 ft Mean: 14.9 days Range: 9.9 - 19.9 days p50:18 days p75:15 days p90:11.5 days

Wave Height > 8.0 ft Mean: 6.9 days Range: 2.1 - 11.6 days p50:7.5 days p75:4.5 days p90:4 days

Wind Speed > 10.0 knots Mean: 29.4 days Range: 28.4 - 30.0 days p50:30 days p75:29.5 days p90:28.5 days

Wind Speed > 15.0 knots Mean: 19.9 days Range: 15.5 - 24.2 days p50:21 days p75:17.5 days p90:14.5 days

Wind Speed > 20.0 knots Mean: 1.3 days Range: 0.0 - 2.8 days p50:1 days p75:0.5 days p90:0.5 days

## Working Window

Wave Height < 6.0 ft  
A 1 day or longer window will statistically occur 1.3 times per month  
A 2 day or longer window will statistically occur 0.6 times per month  
A 3 day or longer window will statistically occur 0.3 times per month

Wave Height < 7.0 ft  
A 1 day or longer window will statistically occur 3.0 times per month  
A 2 day or longer window will statistically occur 2.0 times per month  
A 3 day or longer window will statistically occur 1.3 times per month

Wave Height < 8.0 ft  
A 1 day or longer window will statistically occur 3.8 times per month  
A 2 day or longer window will statistically occur 2.9 times per month  
A 3 day or longer window will statistically occur 2.3 times per month

## Waves

Mean Height: 6 - 8 ft

The wave heights will occasionally reach 10 - 12 ft, but rarely higher.

Mean Period: 8 - 10 sec

The wave periods will occasionally reach 14 - 16 sec, but rarely longer.

Principle Direction, from: ENE

WindSea/Swell: 15% / 85%

## Winds

Mean Speed: 15 - 20 kts

The winds will occasionally reach 20 - 25 kts, but rarely greater.

Principle Direction, from: ENE

## Currents

Mean Speed: 0.75-1.00 kts

The currents will occasionally reach 2.25-2.50 kts, but rarely greater.

Principle Direction, to: NNW

## Weather Days

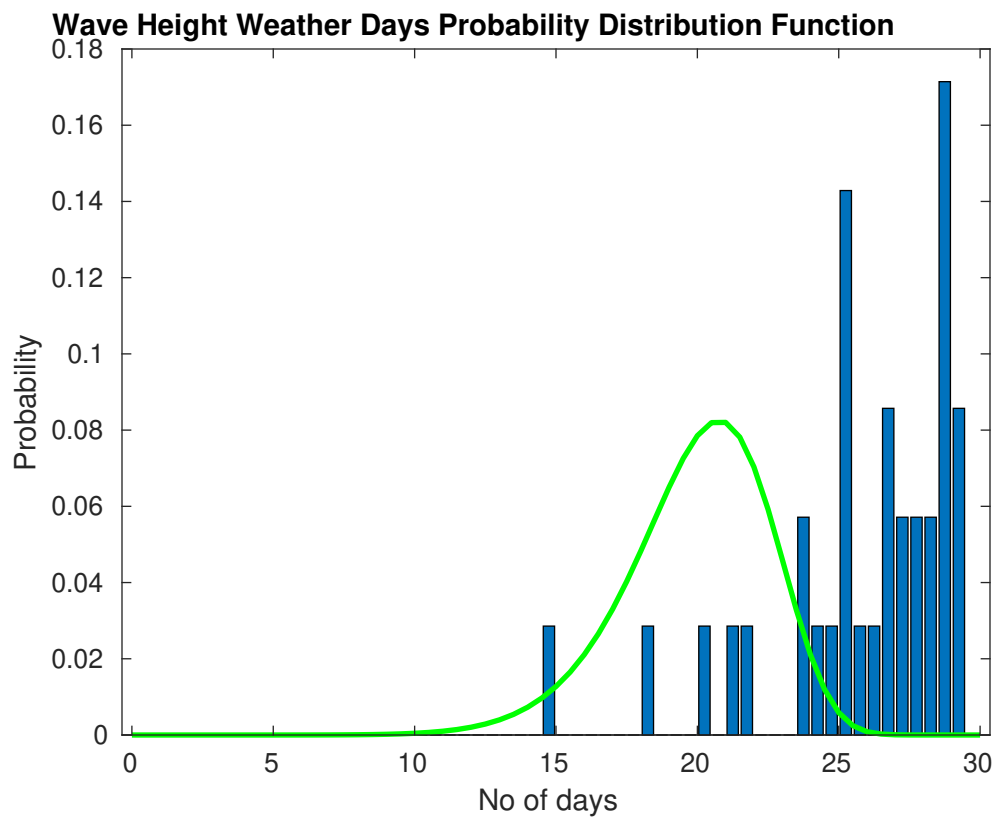
Current Speed > 1.0 knots Mean: 8.6 days Range: 2.6 - 14.6 days p50:10 days p75:4 days p90:2 days

Current Speed > 1.5 knots Mean: 3.0 days Range: 0.0 - 6.7 days p50:4 days p75:1 days p90:1 days

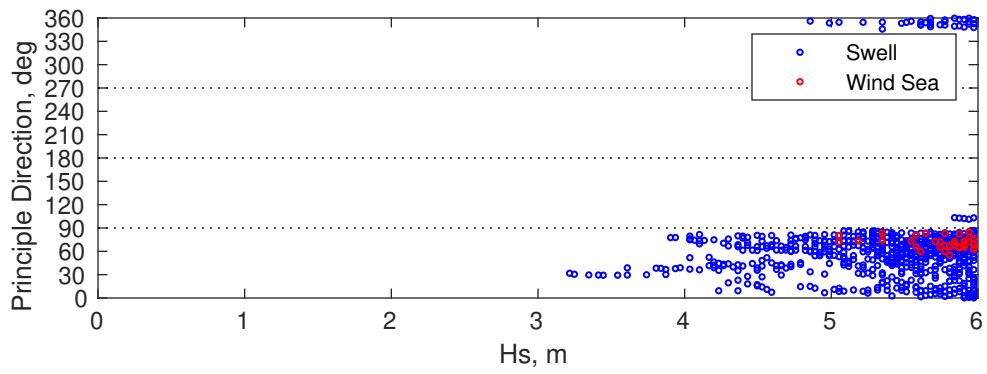
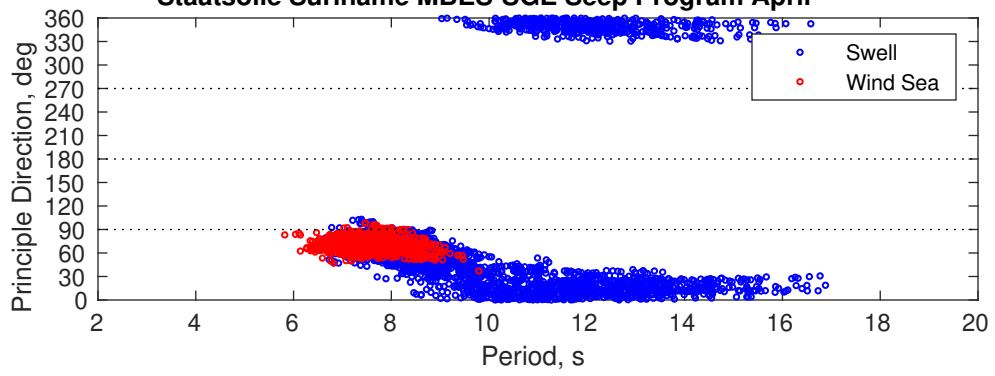
Current Speed > 2.0 knots Mean: 0.6 days Range: 0.0 - 1.9 days p50:1 days p75:1 days p90:1 days

## Severe Storms

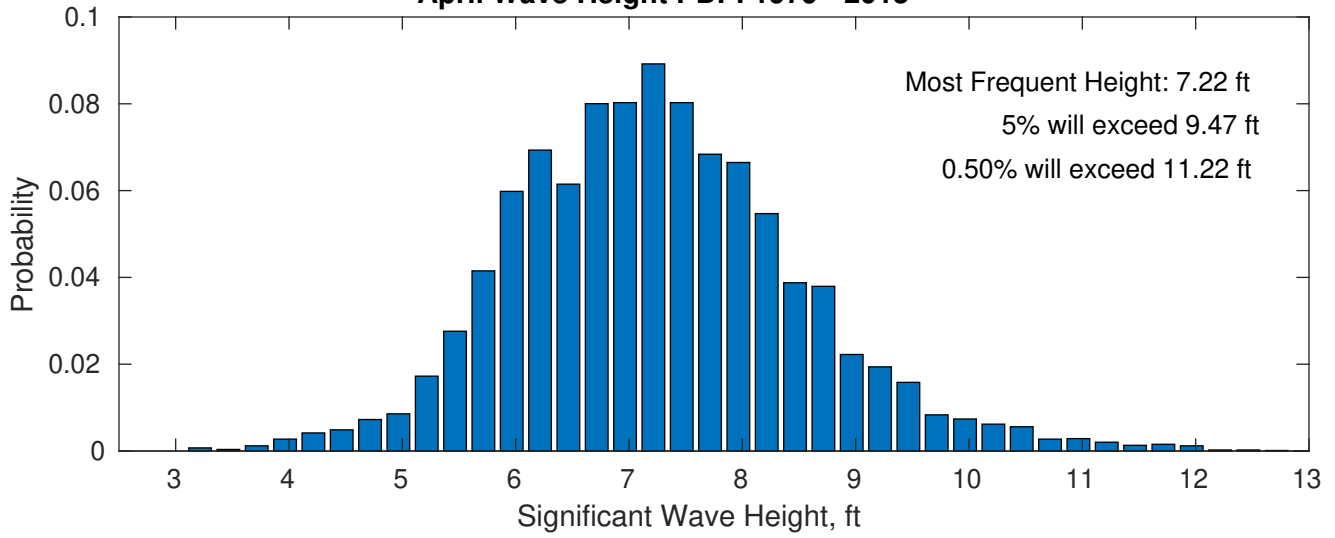
Severe storms with gale force winds and extreme waves are not expected during this month.



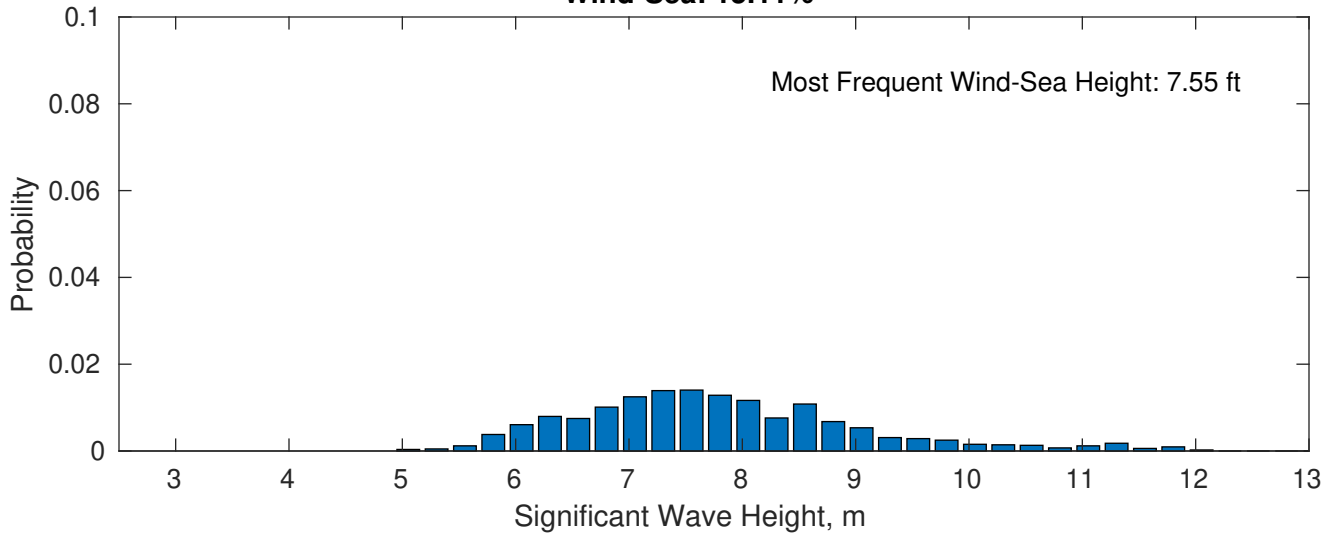
### Staatsolie Suriname MBES-SGE Seep Program April



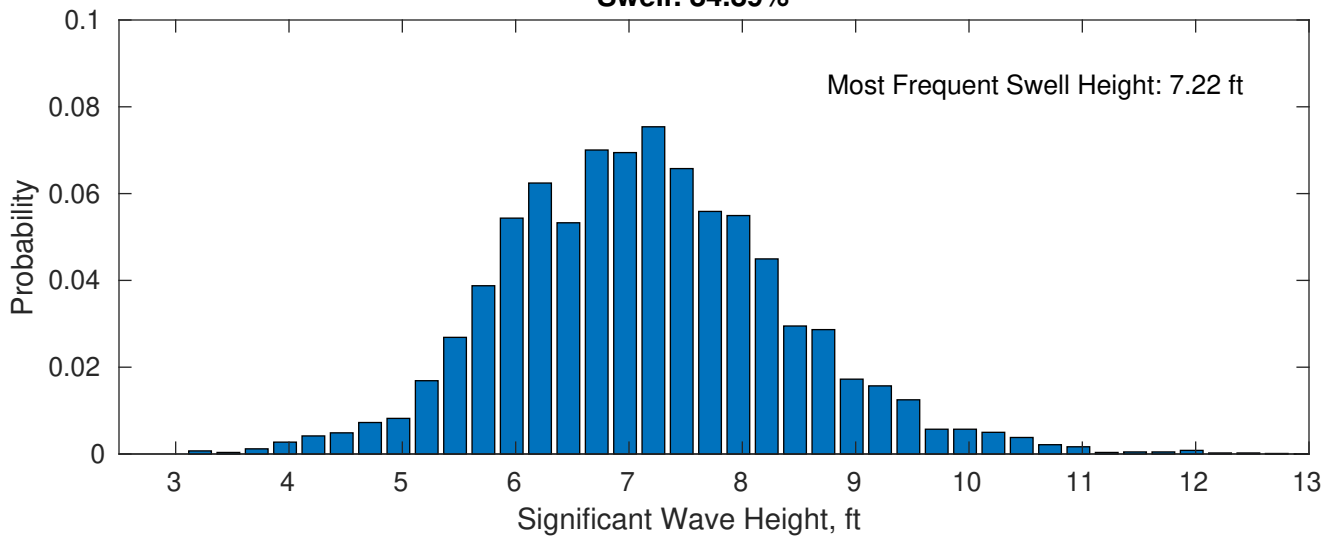
**April Wave Height PDF: 1979 - 2015**



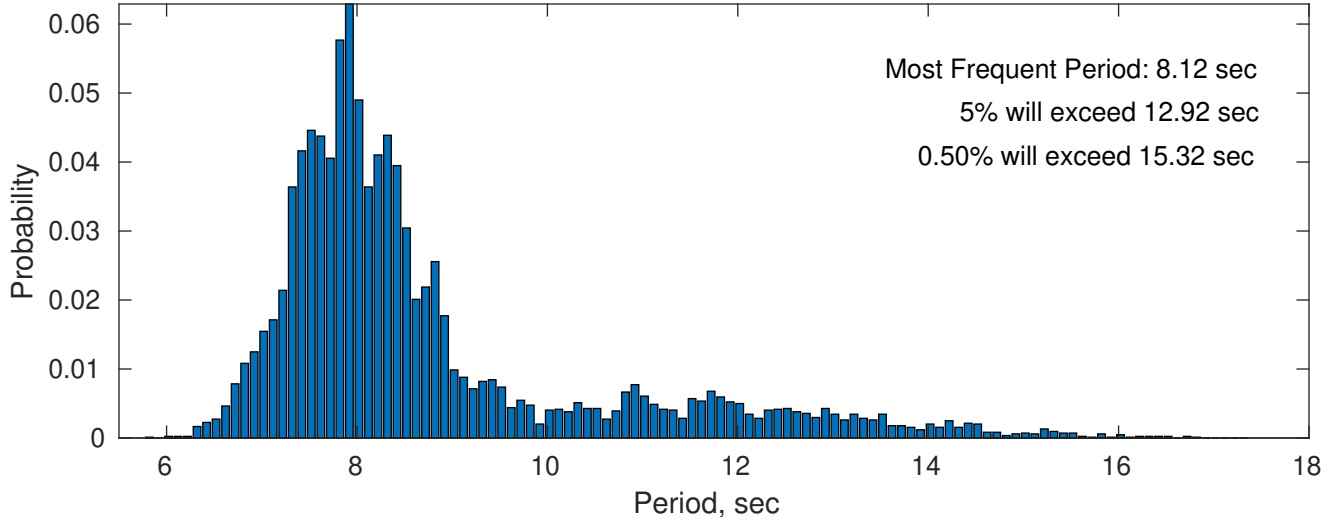
**Wind-Sea: 15.11%**



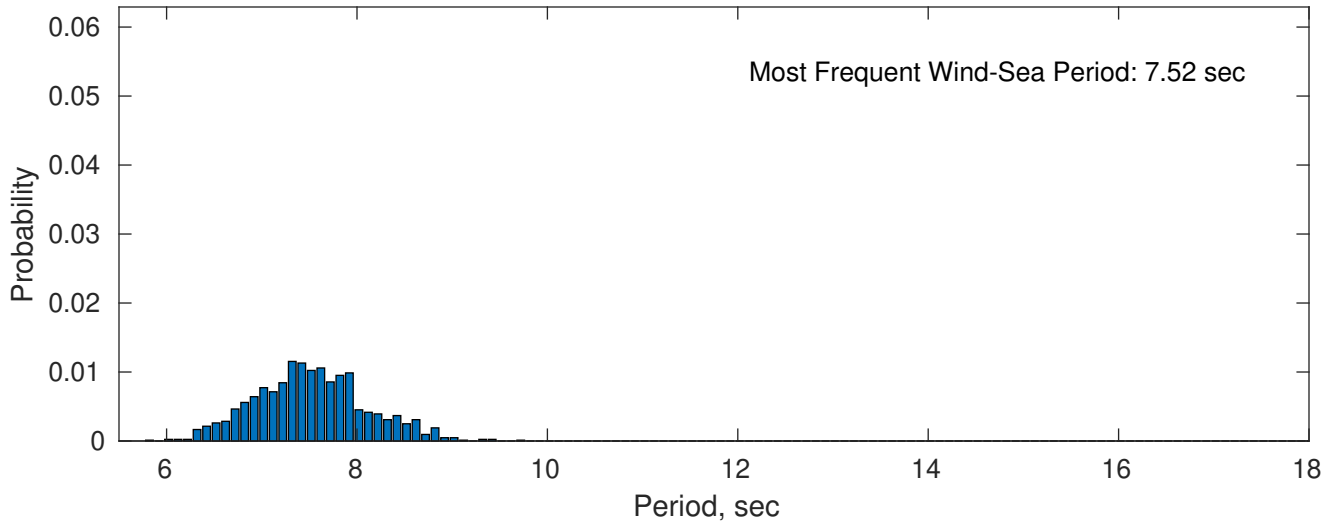
**Swell: 84.89%**



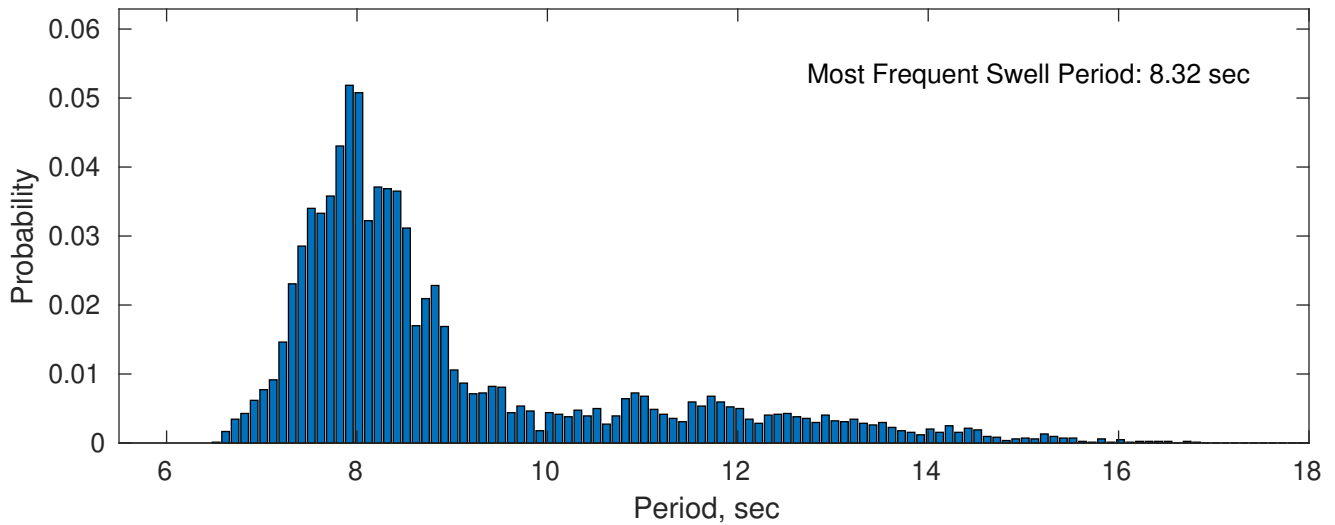
### April Peak Wave Period PDF: 1979 - 2015



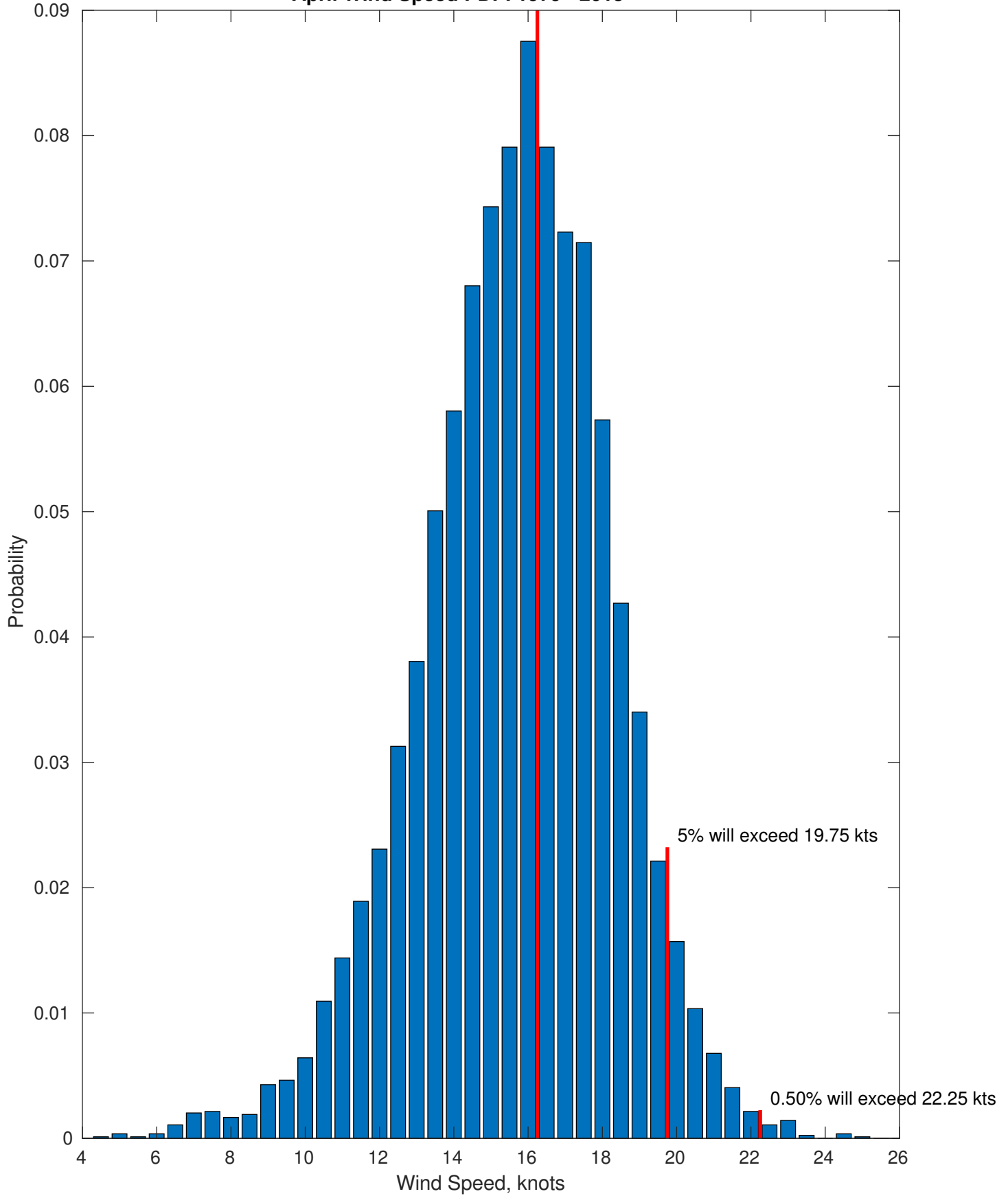
### Wind-Sea: 15.11%



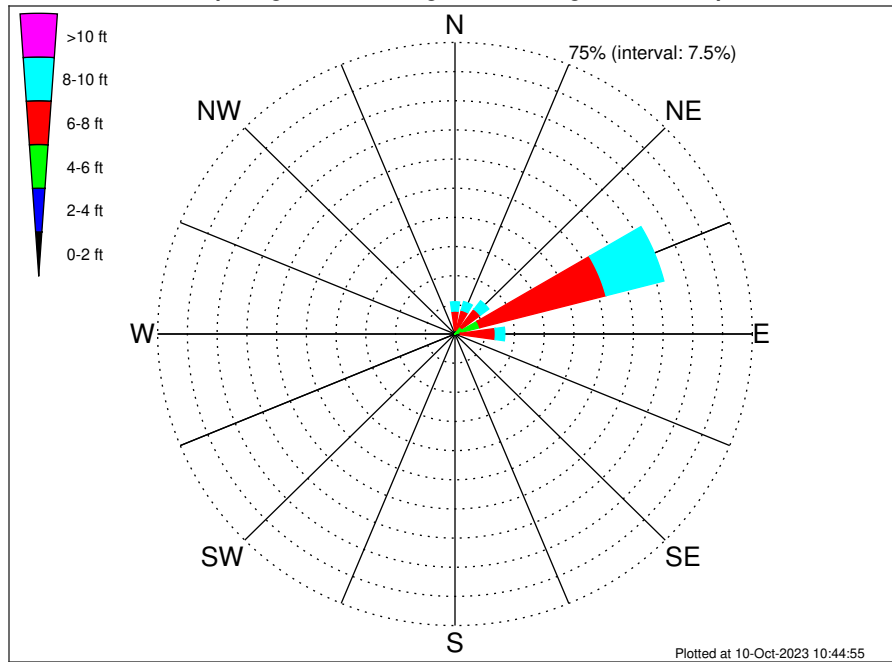
### Swell: 84.89%



Most Frequent Wind Speed: 16.25 kts  
**April Wind Speed PDF: 1979 - 2015**



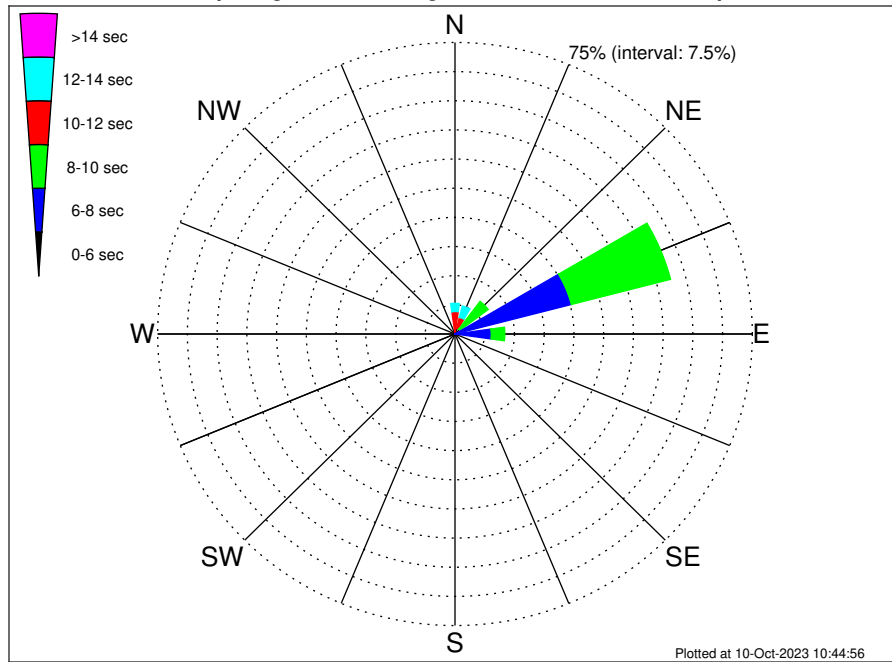
Staatsolie Suriname MBES-SGE Seep Program Climatological WaveHeight Rose for April: 1979 - 2015



Joint Frequency Distribution Table

	N	NNE	NE	ENE	E	ESE	SE	SSE	S	SSW	SW	WSW	W	WNW	NW	NNW	Total
calm	•	•	•	•	•	•	•	•	•	•	•	•	•	•	•	•	•
1 - 2 ft	•	•	•	•	•	•	•	•	•	•	•	•	•	•	•	•	•
2 - 4 ft	•	0.12	0.10	0.02	•	•	•	•	•	•	•	•	•	•	•	•	0.24
4 - 6 ft	1.08	1.00	2.15	6.42	1.37	0.07	•	•	•	•	•	•	•	•	•	0.06	12.15
6 - 8 ft	4.82	5.22	5.73	32.91	8.81	0.02	•	•	•	•	•	•	•	•	•	1.50	59.01
8 - 10 ft	2.40	2.28	2.72	15.08	2.39	•	•	•	•	•	•	•	•	•	•	0.67	25.54
10 - 12 ft	0.20	0.08	0.74	1.71	•	•	•	•	•	•	•	•	•	•	•	0.15	2.89
12 - 14 ft	•	0.04	0.11	0.02	•	•	•	•	•	•	•	•	•	•	•	•	0.17
14 - 16 ft	•	•	•	•	•	•	•	•	•	•	•	•	•	•	•	•	•
16 - 18 ft	•	•	•	•	•	•	•	•	•	•	•	•	•	•	•	•	•
> 18 ft	•	•	•	•	•	•	•	•	•	•	•	•	•	•	•	•	•
Total	8.50	8.74	11.55	56.17	12.57	0.10	•	•	•	•	•	•	•	•	•	2.38	100.00

Staatsolie Suriname MBES-SGE Seep Program Climatological WavePeriod Rose for April: 1979 - 2015



Joint Frequency Distribution Table

	N	NNE	NE	ENE	E	ESE	SE	SSE	S	SSW	SW	WSW	W	WNW	NW	NNW	Total
calm	.	.	.	.	.	.	.	.	.	.	.	.	.	.	.	.	.
1 - 2 sec	.	.	.	.	.	.	.	.	.	.	.	.	.	.	.	.	.
2 - 4 sec	.	.	.	.	.	.	.	.	.	.	.	.	.	.	.	.	.
4 - 6 sec	.	.	.	.	0.01	.	.	.	.	.	.	.	.	.	.	.	0.01
6 - 8 sec	.	0.02	1.53	30.31	9.13	0.10	.	.	.	.	.	.	.	.	.	.	41.10
8 - 10 sec	0.59	1.62	8.97	25.85	3.42	.	.	.	.	.	.	.	.	.	.	0.05	40.50
10 - 12 sec	5.18	2.77	0.87	.	.	.	.	.	.	.	.	.	.	.	.	1.00	9.82
12 - 14 sec	2.12	3.04	0.18	.	.	.	.	.	.	.	.	.	.	.	.	0.96	6.30
14 - 16 sec	0.57	1.13	.	.	.	.	.	.	.	.	.	.	.	.	.	0.37	2.07
18 - 20 sec	0.04	0.15	.	.	.	.	.	.	.	.	.	.	.	.	.	.	0.19
22 - 24 sec	.	.	.	.	.	.	.	.	.	.	.	.	.	.	.	.	.
Total	8.50	8.74	11.55	56.17	12.57	0.10	.	.	.	.	.	.	.	.	.	2.38	100.00



