

Staatsolie Suriname MBES-SGE Seep Program - August

Latitude: 8.45 N Longitude: 53.44 W

Weather Days

Wave Height > 6.0 ft Mean: 2.3 days Range: 0.0 - 4.7 days p50:3 days p75:1.5 days p90:1 days

Wave Height > 7.0 ft Mean: 0.3 days Range: 0.0 - 0.8 days p50:30 days p75:1 days p90:0.5 days

Wave Height > 8.0 ft Mean: 0.0 days Range: 0.0 - 0.2 days p50:30 days p75:30 days p90:30 days

Wind Speed > 10.0 knots Mean: 12.9 days Range: 9.6 - 16.3 days p50:13 days p75:11 days p90:8.5 days

Wind Speed > 15.0 knots Mean: 1.1 days Range: 0.3 - 2.0 days p50:1.5 days p75:0.5 days p90:0.5 days

Wind Speed > 20.0 knots Mean: 0.0 days Range: 0.0 - 0.1 days p50:0.5 days p75:0.5 days p90:0.5 days

Working Window

Wave Height < 6.0 ft
A 1 day or longer window will statistically occur 3.0 times per month
A 2 day or longer window will statistically occur 2.7 times per month
A 3 day or longer window will statistically occur 2.2 times per month

Wave Height < 7.0 ft
A 1 day or longer window will statistically occur 1.5 times per month
A 2 day or longer window will statistically occur 1.5 times per month
A 3 day or longer window will statistically occur 1.3 times per month

Wave Height < 8.0 ft
A 1 day or longer window will statistically occur 1.1 times per month
A 2 day or longer window will statistically occur 1.1 times per month
A 3 day or longer window will statistically occur 1.1 times per month

Waves

Mean Height: 4 - 6 ft

The wave heights will occasionally reach 6 - 8 ft, but rarely higher.

Mean Period: 8 - 10 sec

The wave periods will occasionally reach 10 - 12 sec, but rarely longer.

Principle Direction, from: E

WindSea/Swell: 1% / 99%

Winds

Mean Speed: 5 - 10 kts

The winds will occasionally reach 15 - 20 kts, but rarely greater.

Principle Direction, from: E

Currents

Mean Speed: 0.75-1.00 kts

The currents will occasionally reach 2.25-2.50 kts, but rarely greater.

Principle Direction, to: N

Weather Days

Current Speed > 1.0 knots Mean: 12.7 days Range: 4.5 - 21.0 days p50:14 days p75:5 days p90:1 days

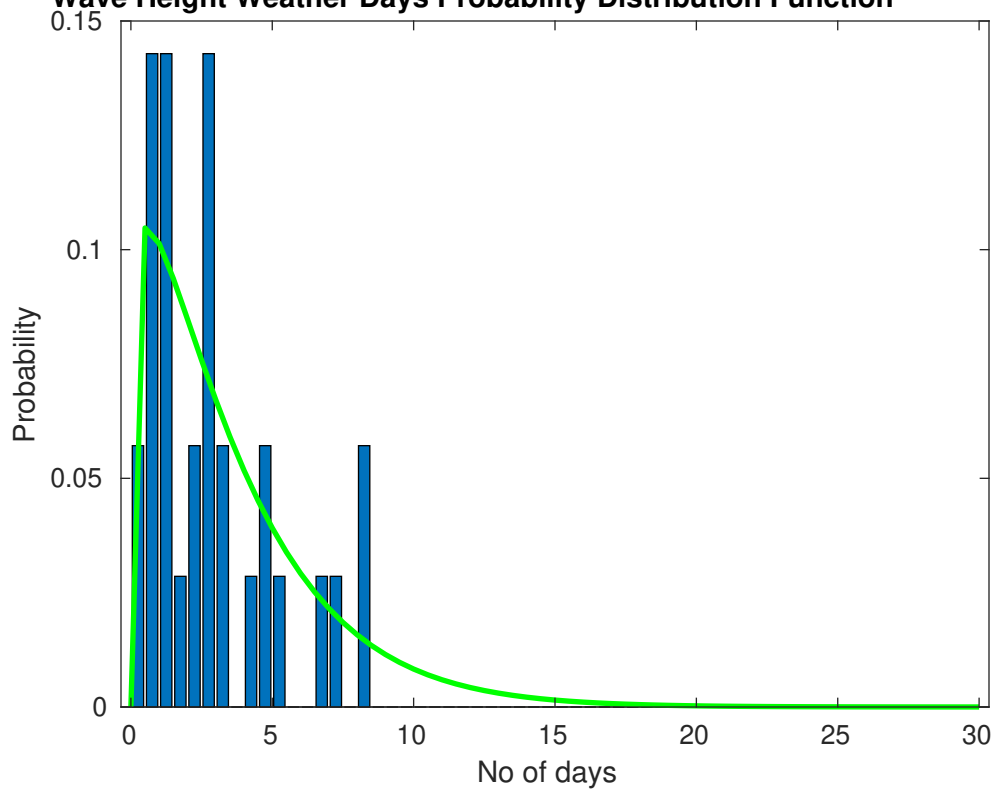
Current Speed > 1.5 knots Mean: 6.3 days Range: 0.0 - 12.7 days p50:5 days p75:1 days p90:1 days

Current Speed > 2.0 knots Mean: 3.4 days Range: 0.0 - 8.2 days p50:1 days p75:1 days p90:1 days

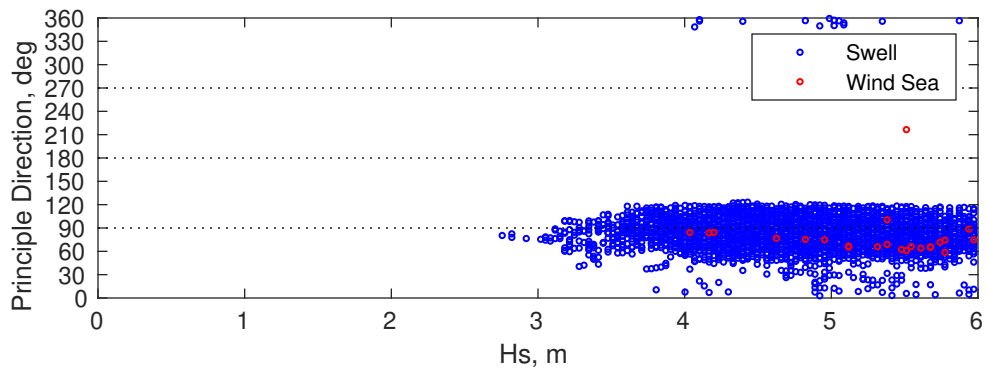
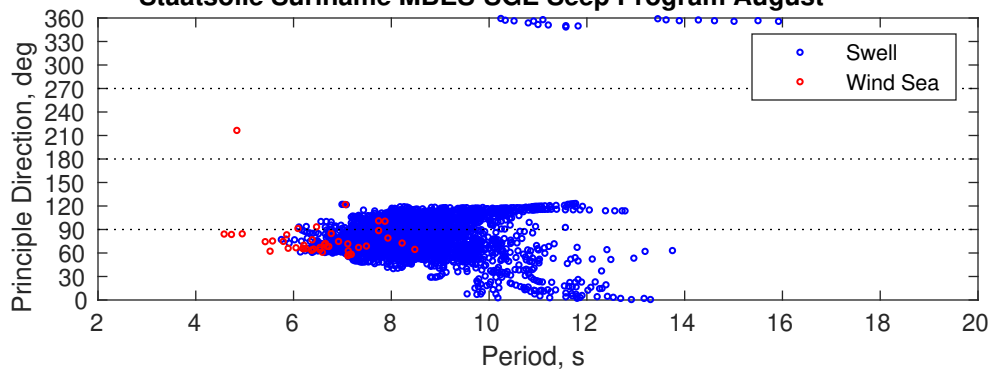
Severe Storms

Severe storms with gale force winds and extreme waves are not expected during this month.

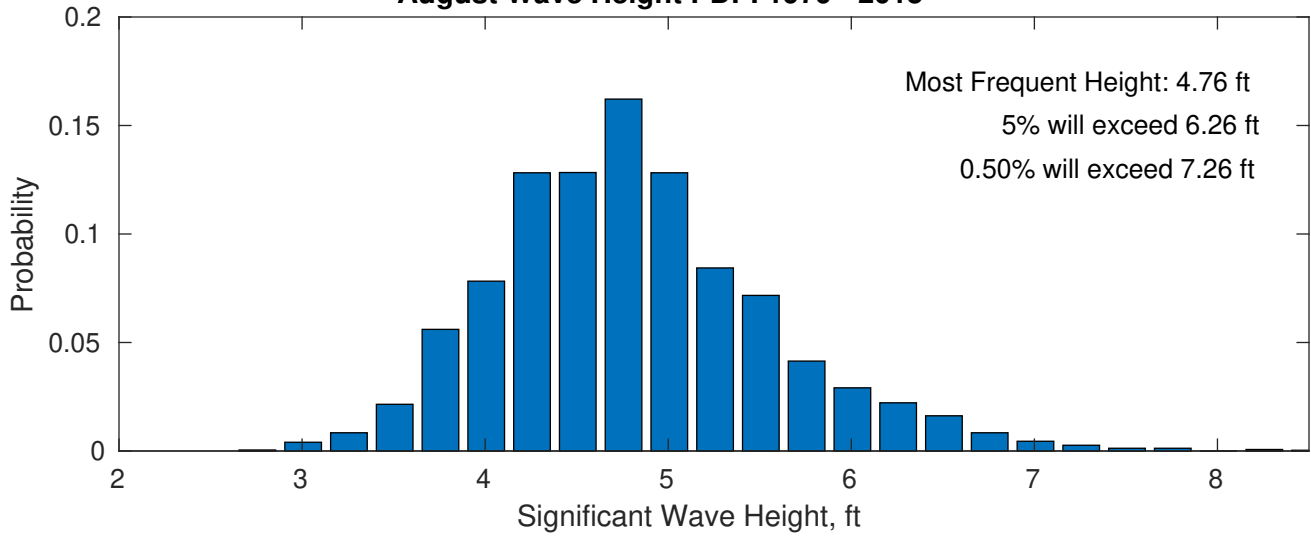
Wave Height Weather Days Probability Distribution Function



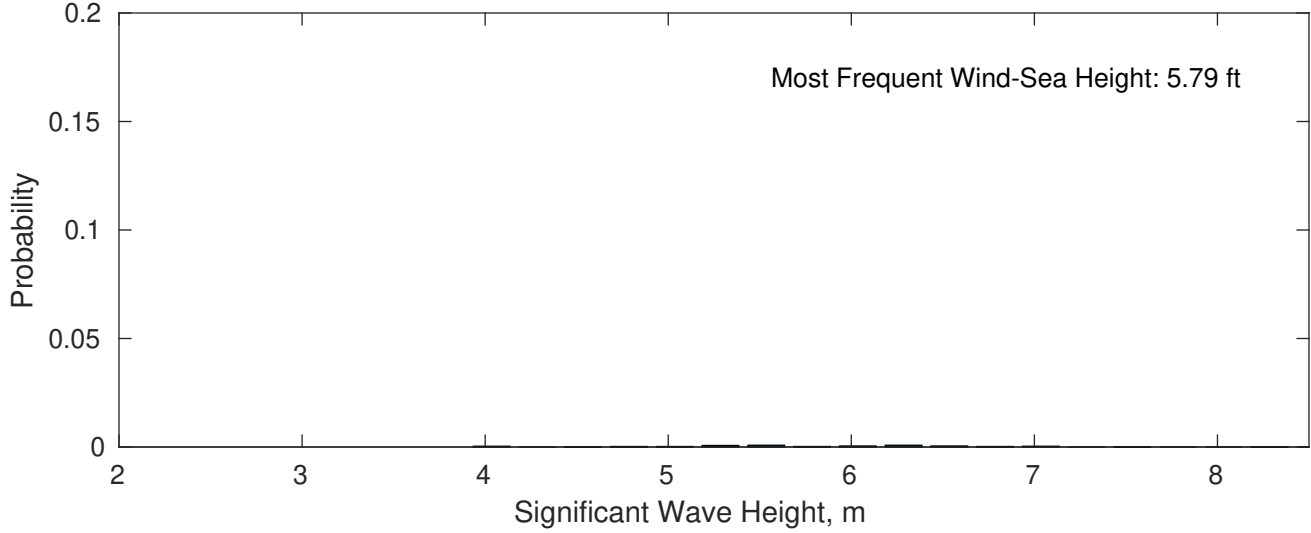
Staatsolie Suriname MBES-SGE Seep Program August



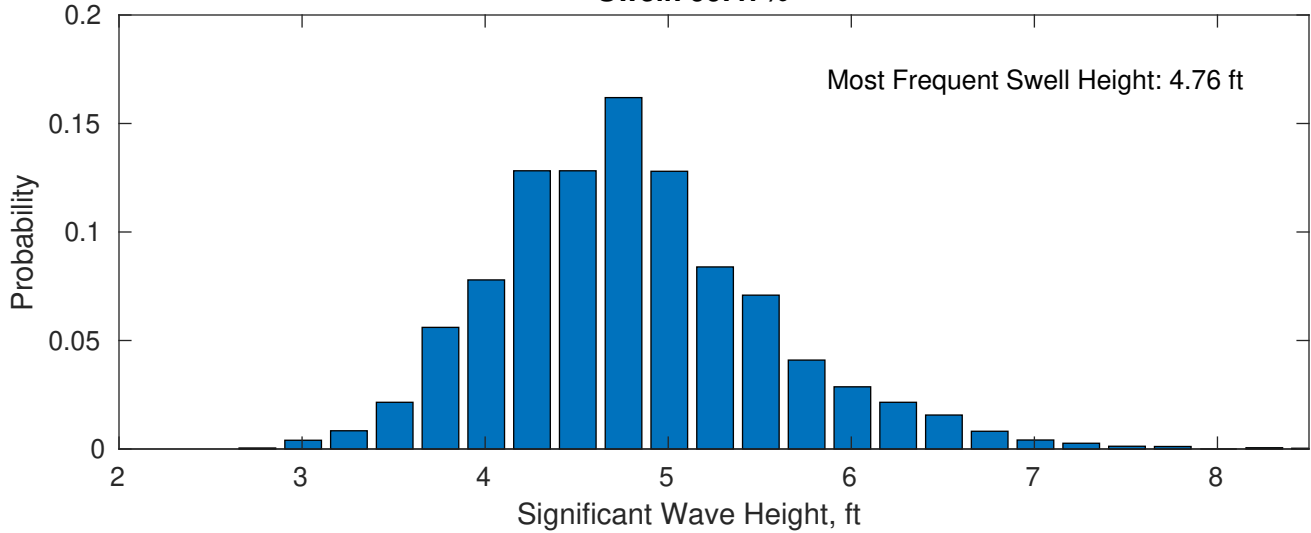
August Wave Height PDF: 1979 - 2015



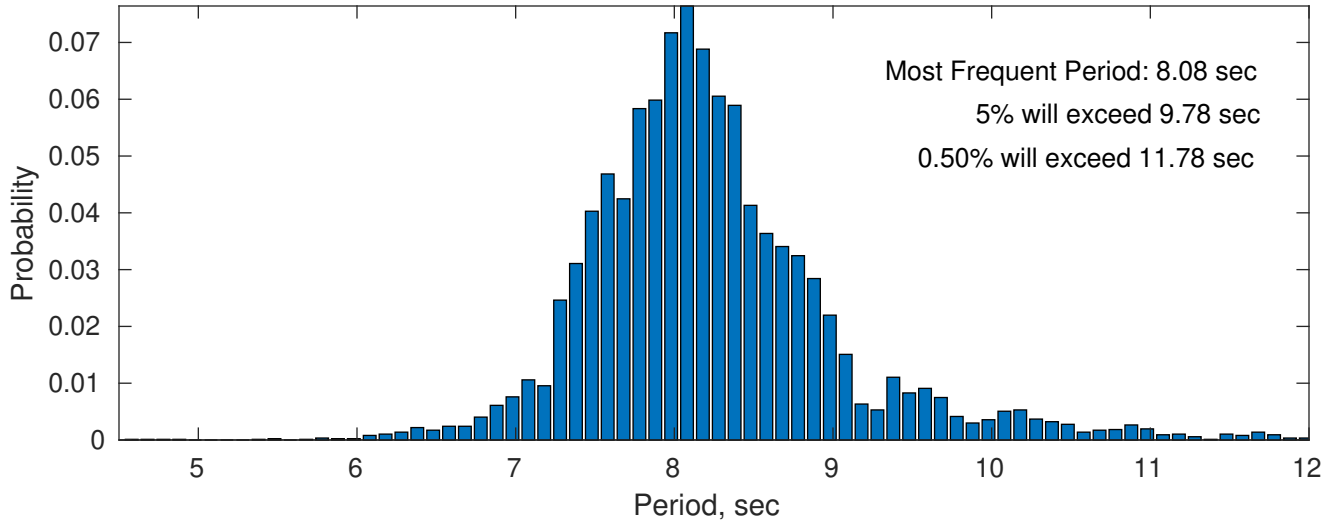
Wind-Sea: 0.53%



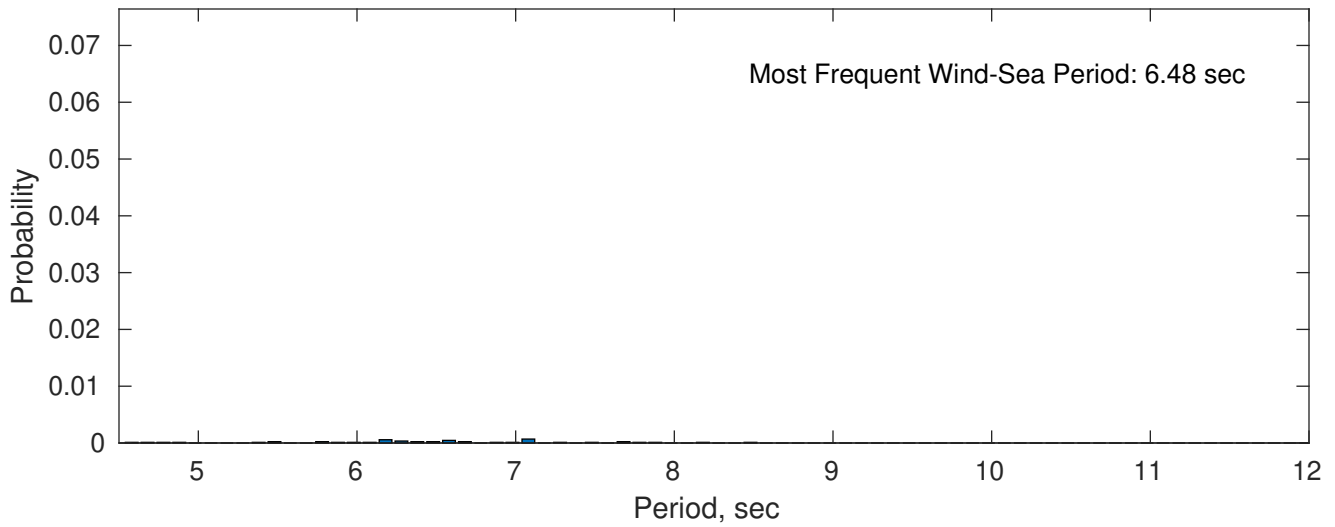
Swell: 99.47%



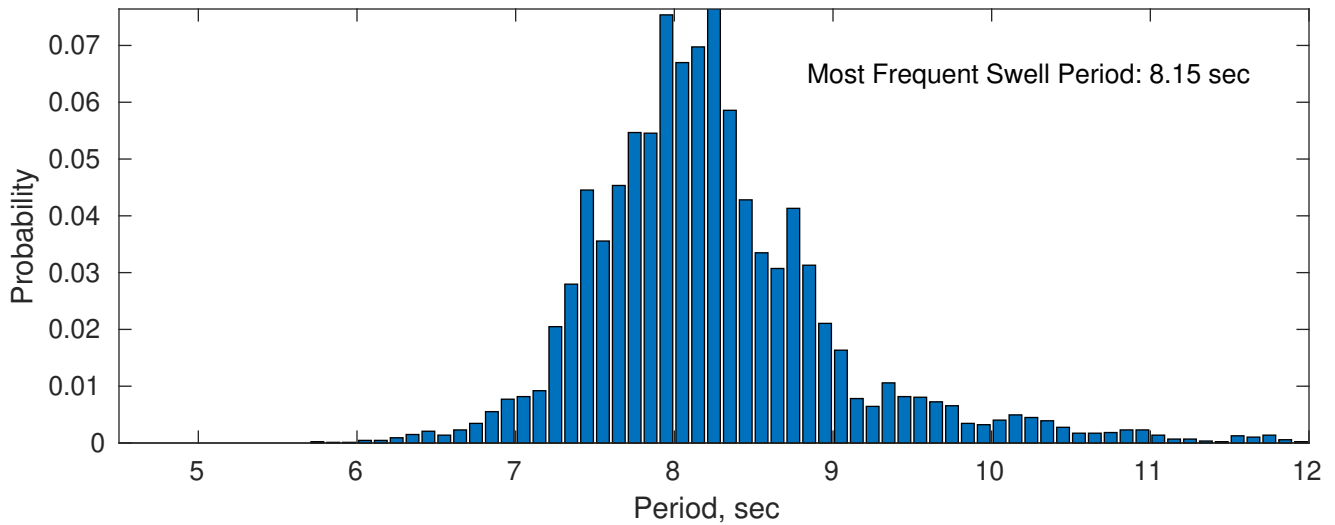
August Peak Wave Period PDF: 1979 - 2015



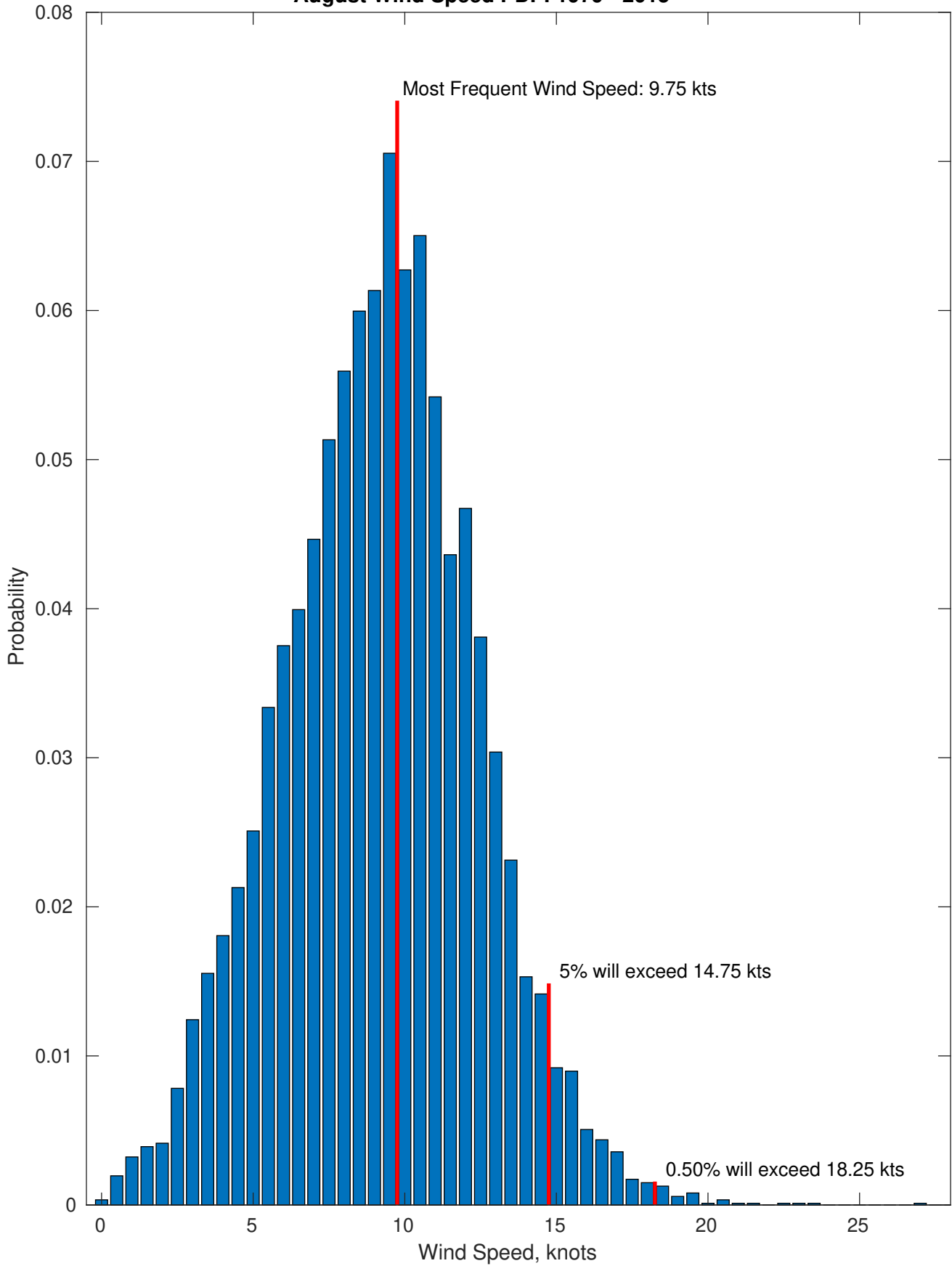
Wind-Sea: 0.53%



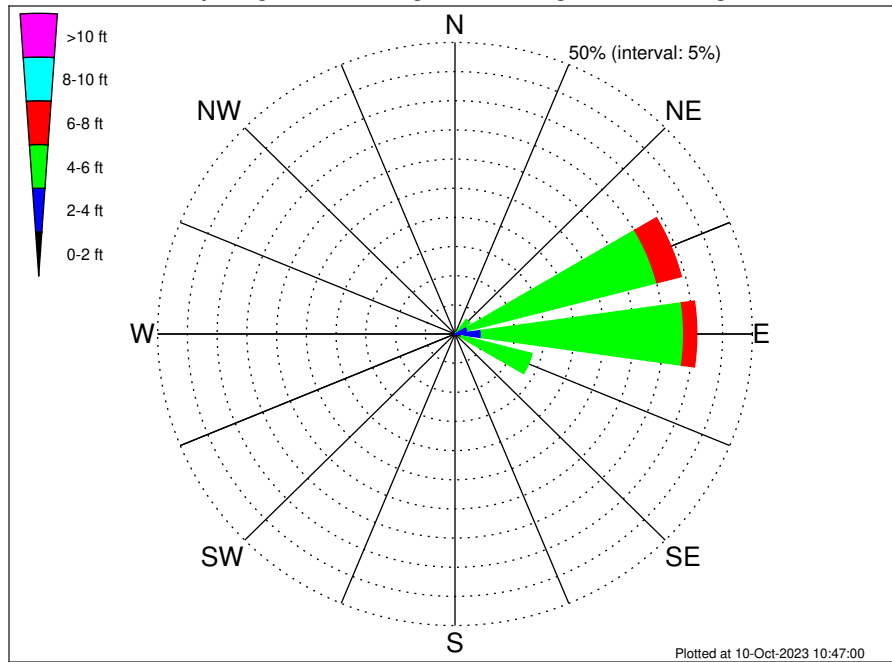
Swell: 99.47%



August Wind Speed PDF: 1979 - 2015



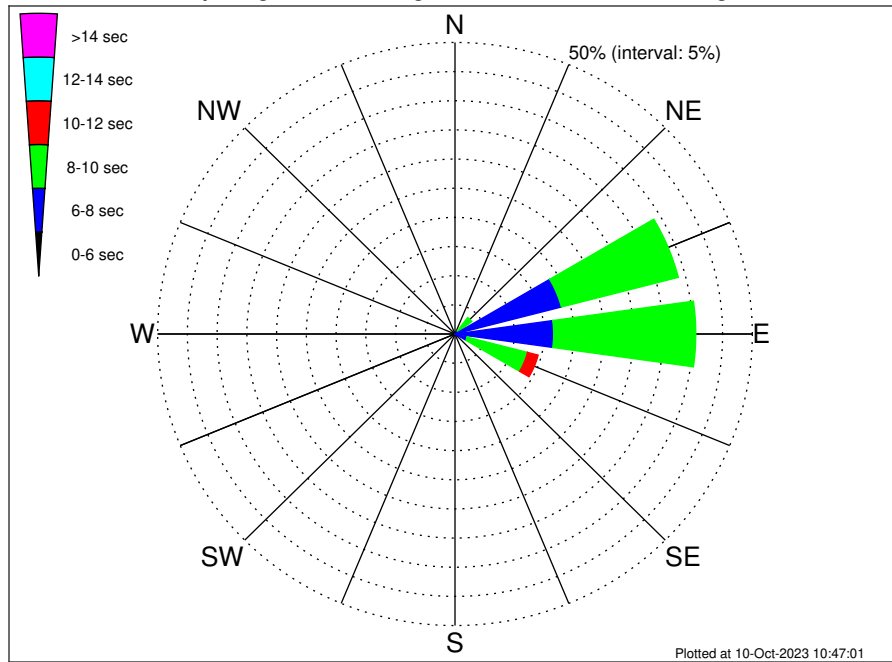
Staatsolie Suriname MBES-SGE Seep Program Climatological WaveHeight Rose for August: 1979 - 2015



Joint Frequency Distribution Table

	N	NNE	NE	ENE	E	ESE	SE	SSE	S	SSW	SW	WSW	W	WNW	NW	NNW	Total
calm
1 - 2 ft
2 - 4 ft	0.01	.	0.22	2.26	4.44	1.19	8.11
4 - 6 ft	0.35	0.53	2.91	32.80	34.01	12.21	0.01	0.01	82.83
6 - 8 ft	0.17	0.22	0.94	4.26	2.21	1.10	8.91
8 - 10 ft	.	.	.	0.09	0.06	0.15
10 - 12 ft
12 - 14 ft
14 - 16 ft
16 - 18 ft
> 18 ft
Total	0.53	0.75	4.07	39.41	40.72	14.50	0.01	0.01	100.00

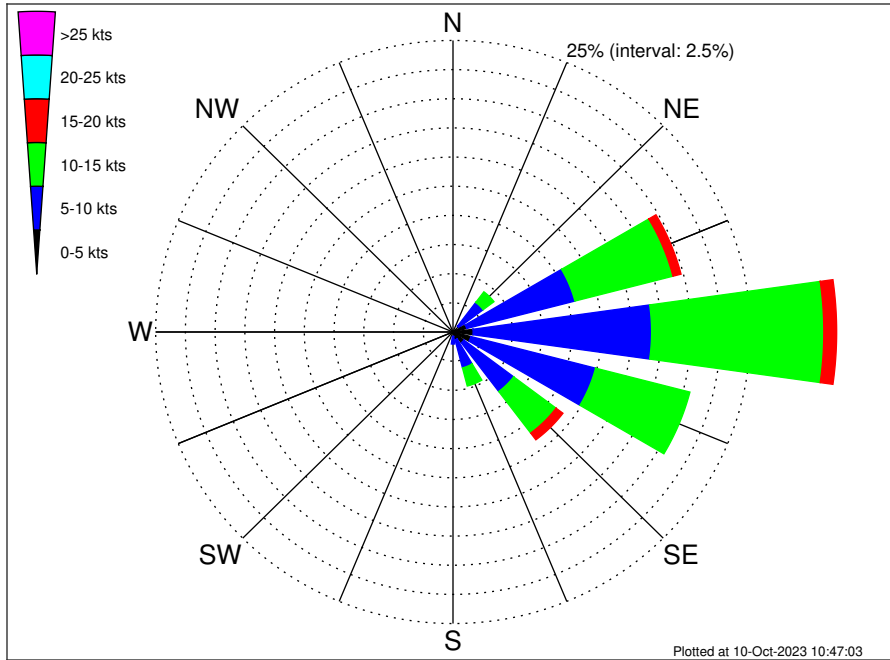
Staatsolie Suriname MBES-SGE Seep Program Climatological WavePeriod Rose for August: 1979 - 2015



Joint Frequency Distribution Table

	N	NNE	NE	ENE	E	ESE	SE	SSE	S	SSW	SW	WSW	W	WNW	NW	NNW	Total
calm
1 - 2 sec
2 - 4 sec
4 - 6 sec	.	.	.	0.09	0.05	0.01	0.15
6 - 8 sec	.	.	0.68	18.39	16.55	2.12	37.74
8 - 10 sec	0.05	0.16	2.85	20.31	23.89	10.48	57.75
10 - 12 sec	0.31	0.51	0.49	0.58	0.23	1.84	0.01	3.97
12 - 14 sec	0.12	0.08	0.05	0.03	.	0.06	0.33
14 - 16 sec	0.06	0.06
18 - 20 sec
22 - 24 sec
Total	0.53	0.75	4.07	39.41	40.72	14.50	0.01	0.01	100.00

Staatsolie Suriname MBES-SGE Seep Program Climatological Wind Rose for August: 1979 - 2015



Joint Frequency Distribution Table

	N	NNE	NE	ENE	E	ESE	SE	SSE	S	SSW	SW	WSW	W	WNW	NW	NNW	Total
calm	0.01	0.02	0.02	•	•	•	•	0.03	0.01	0.03	•	•	0.03	0.03	•	0.02	0.23
0 - 5 kts	0.15	0.22	0.60	1.19	1.69	1.55	1.15	0.66	0.37	0.31	0.18	0.12	0.14	0.08	0.08	0.16	8.64
5 - 10 kts	0.23	0.36	2.55	9.40	15.01	10.83	5.24	2.49	0.66	0.30	0.28	0.22	0.06	0.08	0.12	0.16	47.97
10 - 15 kts	0.05	0.12	1.14	8.52	14.48	8.19	4.47	1.61	0.45	0.12	0.13	0.03	•	0.02	•	0.02	39.34
15 - 20 kts	•	0.01	0.16	0.70	1.08	0.46	0.73	0.39	0.06	0.07	0.01	0.03	•	•	•	•	3.71
20 - 25 kts	•	•	•	0.02	0.06	0.01	•	•	0.01	•	•	•	•	•	•	•	0.10
25 - 30 kts	•	•	•	0.01	•	•	•	•	•	•	•	•	•	•	•	•	0.01
30 - 35 kts	•	•	•	•	•	•	•	•	•	•	•	•	•	•	•	•	•
35 - 40 kts	•	•	•	•	•	•	•	•	•	•	•	•	•	•	•	•	•
40 - 45 kts	•	•	•	•	•	•	•	•	•	•	•	•	•	•	•	•	•
45 - 50 kts	•	•	•	•	•	•	•	•	•	•	•	•	•	•	•	•	•
Total	0.44	0.73	4.48	19.84	32.32	21.05	11.58	5.18	1.55	0.83	0.60	0.40	0.23	0.22	0.20	0.37	100.00