

# Staatsolie Suriname MBES-SGE Seep Program - July

Latitude: 8.45 N Longitude: 53.44 W

## Weather Days

Wave Height > 6.0 ft Mean: 6.9 days Range: 2.4 - 11.5 days p50:7 days p75:3.5 days p90:2 days

Wave Height > 7.0 ft Mean: 1.9 days Range: 0.0 - 3.7 days p50:3 days p75:1.5 days p90:0.5 days

Wave Height > 8.0 ft Mean: 0.4 days Range: 0.0 - 1.2 days p50:30 days p75:2.5 days p90:0.5 days

Wind Speed > 10.0 knots Mean: 16.7 days Range: 12.6 - 20.7 days p50:18 days p75:14.5 days p90:10.5 days

Wind Speed > 15.0 knots Mean: 3.0 days Range: 1.1 - 5.0 days p50:3 days p75:1.5 days p90:1 days

Wind Speed > 20.0 knots Mean: 0.2 days Range: 0.0 - 0.5 days p50:0.5 days p75:0.5 days p90:0.5 days

## Working Window

Wave Height < 6.0 ft  
A 1 day or longer window will statistically occur 3.8 times per month  
A 2 day or longer window will statistically occur 2.8 times per month  
A 3 day or longer window will statistically occur 2.4 times per month

Wave Height < 7.0 ft  
A 1 day or longer window will statistically occur 2.5 times per month  
A 2 day or longer window will statistically occur 2.1 times per month  
A 3 day or longer window will statistically occur 2.0 times per month

Wave Height < 8.0 ft  
A 1 day or longer window will statistically occur 1.4 times per month  
A 2 day or longer window will statistically occur 1.4 times per month  
A 3 day or longer window will statistically occur 1.4 times per month

## Waves

Mean Height: 4 - 6 ft

The wave heights will occasionally reach 8 - 10 ft, but rarely higher.

Mean Period: 6 - 8 sec

The wave periods will occasionally reach 10 - 12 sec, but rarely longer.

Principle Direction, from: ENE

WindSea/Swell: 2% / 98%

## Winds

Mean Speed: 10 - 15 kts

The winds will occasionally reach 20 - 25 kts, but rarely greater.

Principle Direction, from: E

## Currents

Mean Speed: 0.75-1.00 kts

The currents will occasionally reach 2.25-2.50 kts, but rarely greater.

Principle Direction, to: N

## Weather Days

Current Speed > 1.0 knots Mean: 11.6 days Range: 5.2 - 18.0 days p50:11 days p75:9 days p90:3 days

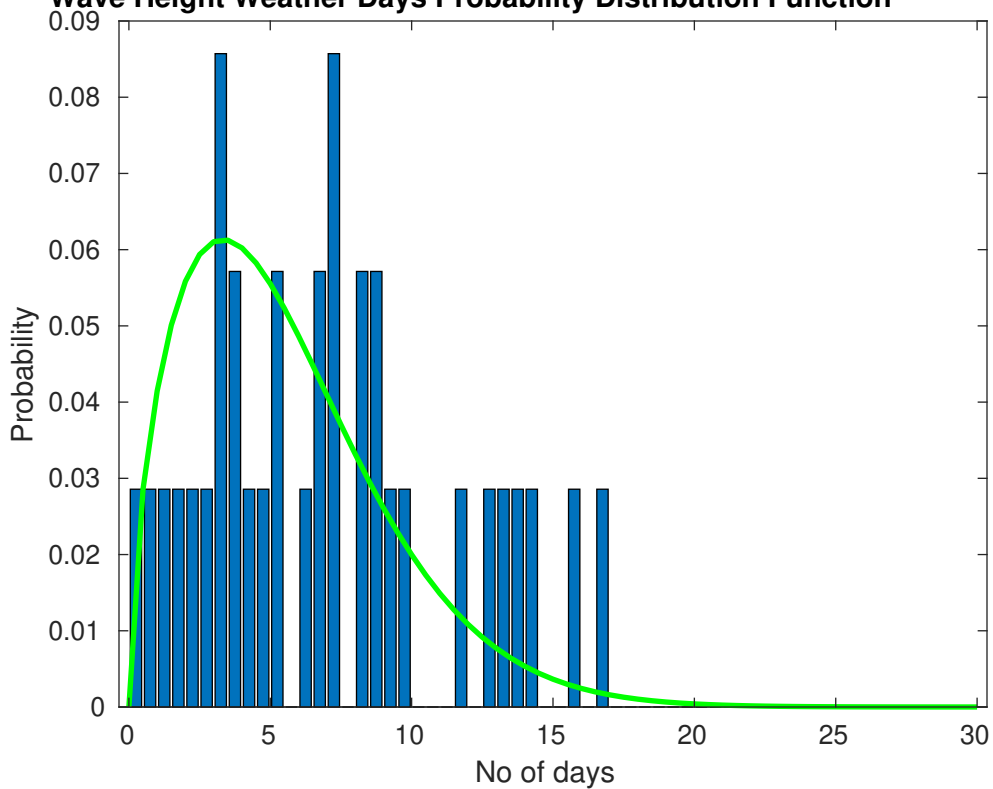
Current Speed > 1.5 knots Mean: 5.7 days Range: 0.0 - 11.4 days p50:8 days p75:2 days p90:1 days

Current Speed > 2.0 knots Mean: 2.0 days Range: 0.0 - 5.1 days p50:2 days p75:1 days p90:1 days

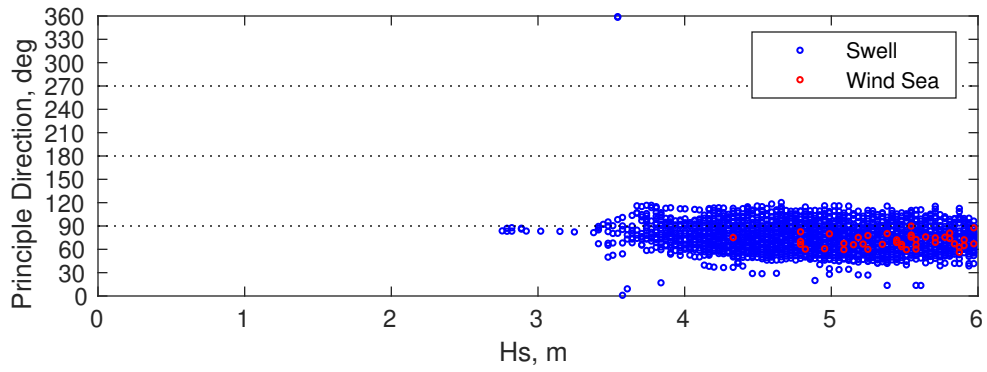
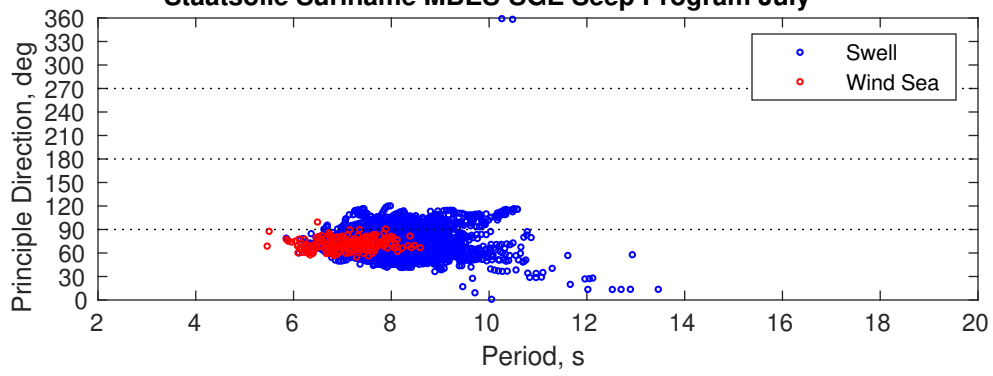
## Severe Storms

Severe storms with gale force winds and extreme waves are not expected during this month.

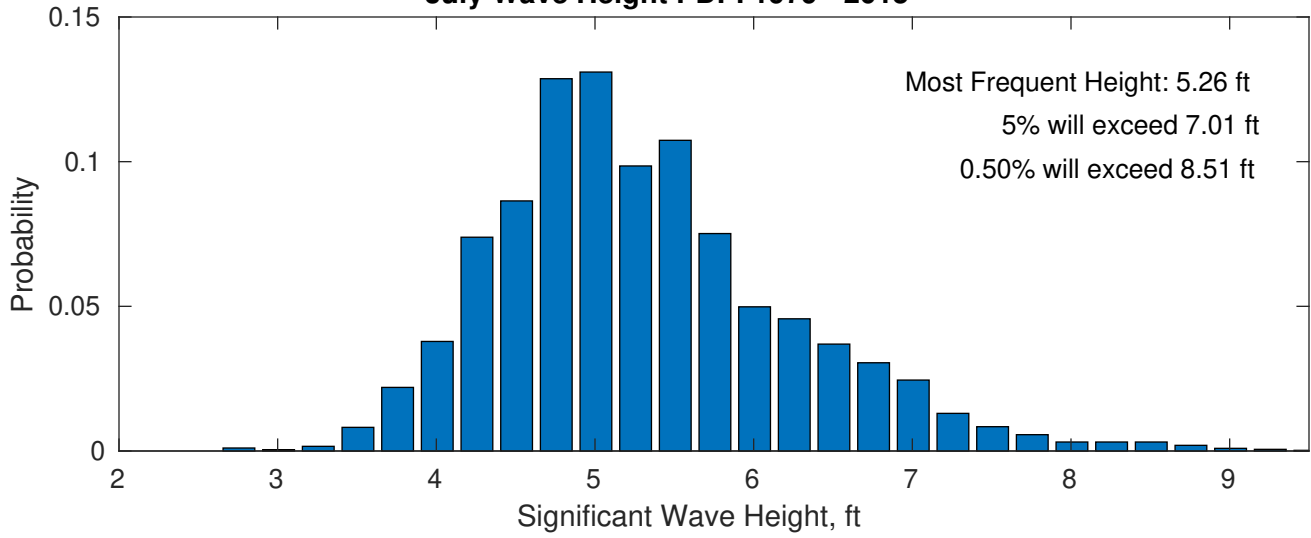
**Wave Height Weather Days Probability Distribution Function**



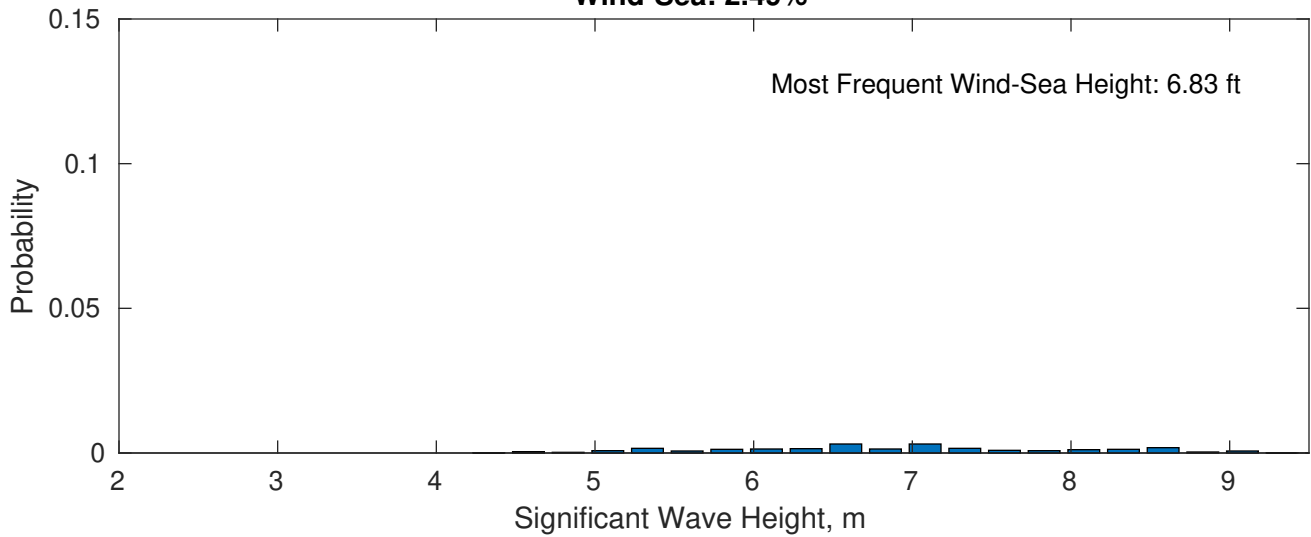
### Staatsolie Suriname MBES-SGE Seep Program July



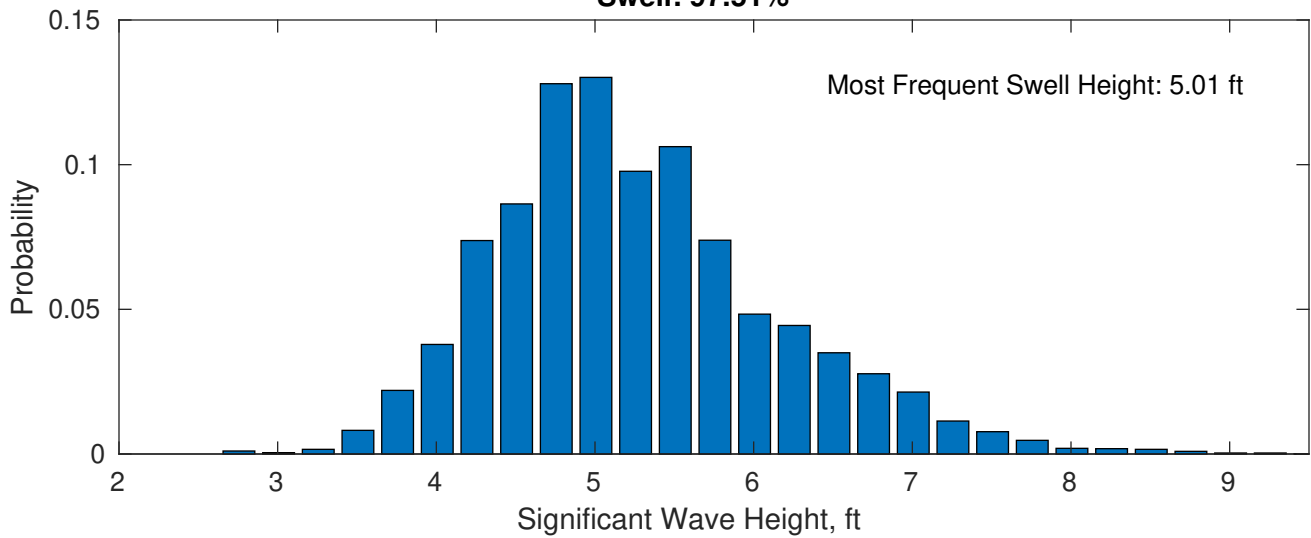
**July Wave Height PDF: 1979 - 2015**



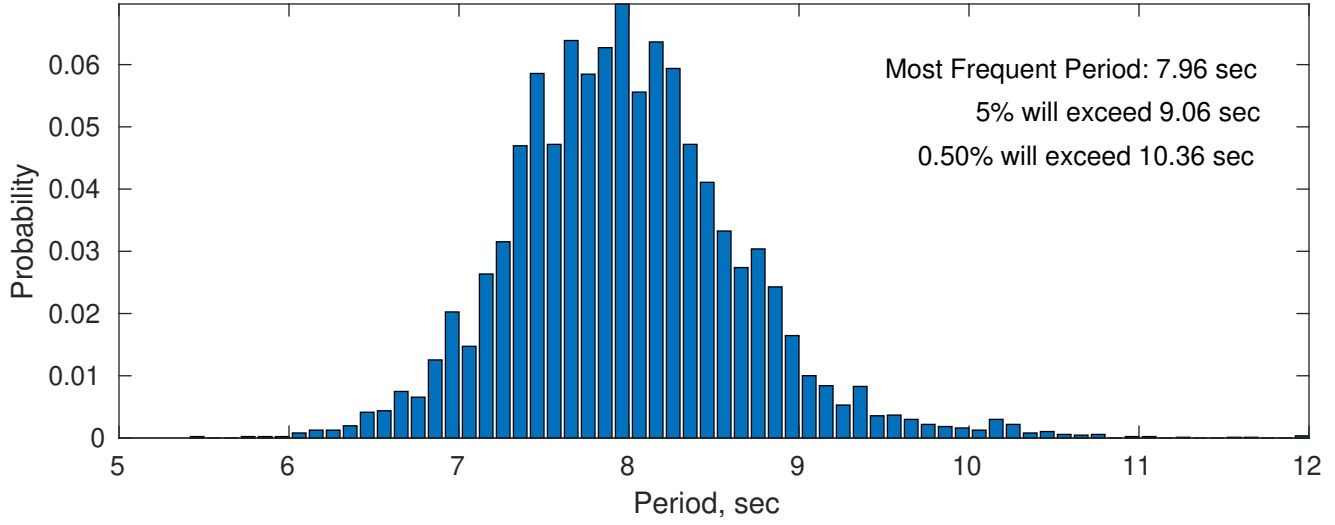
**Wind-Sea: 2.49%**



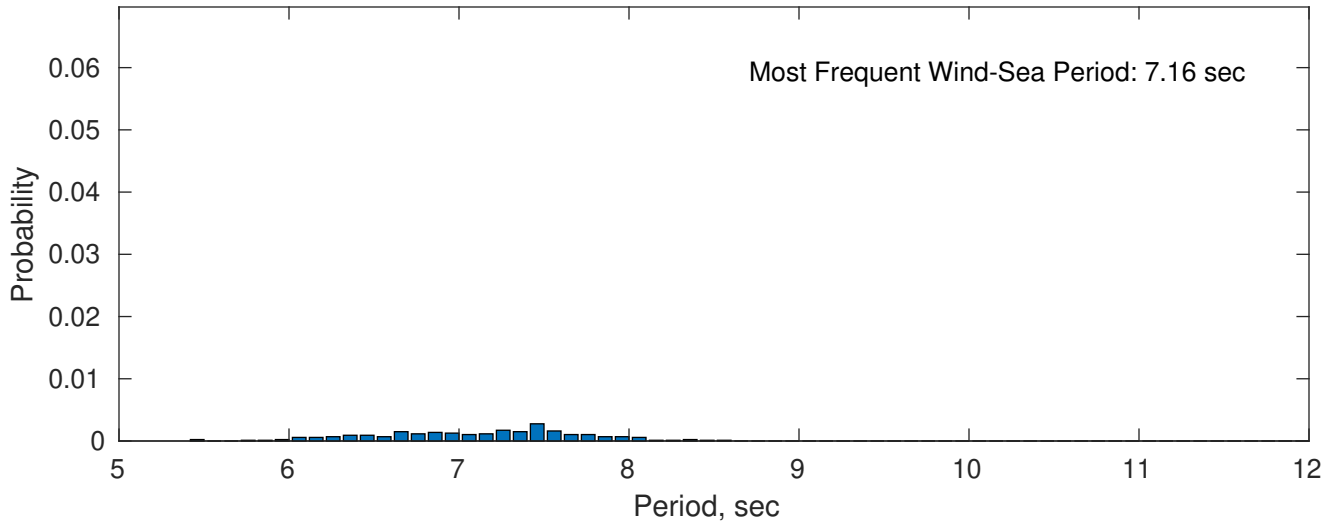
**Swell: 97.51%**



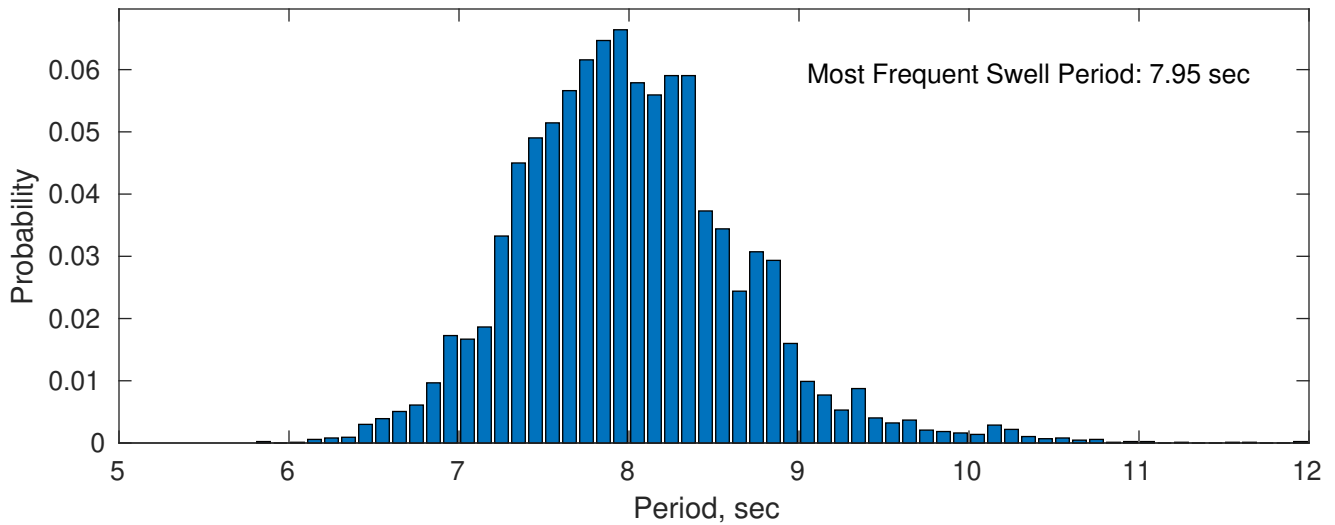
### July Peak Wave Period PDF: 1979 - 2015



### Wind-Sea: 2.49%

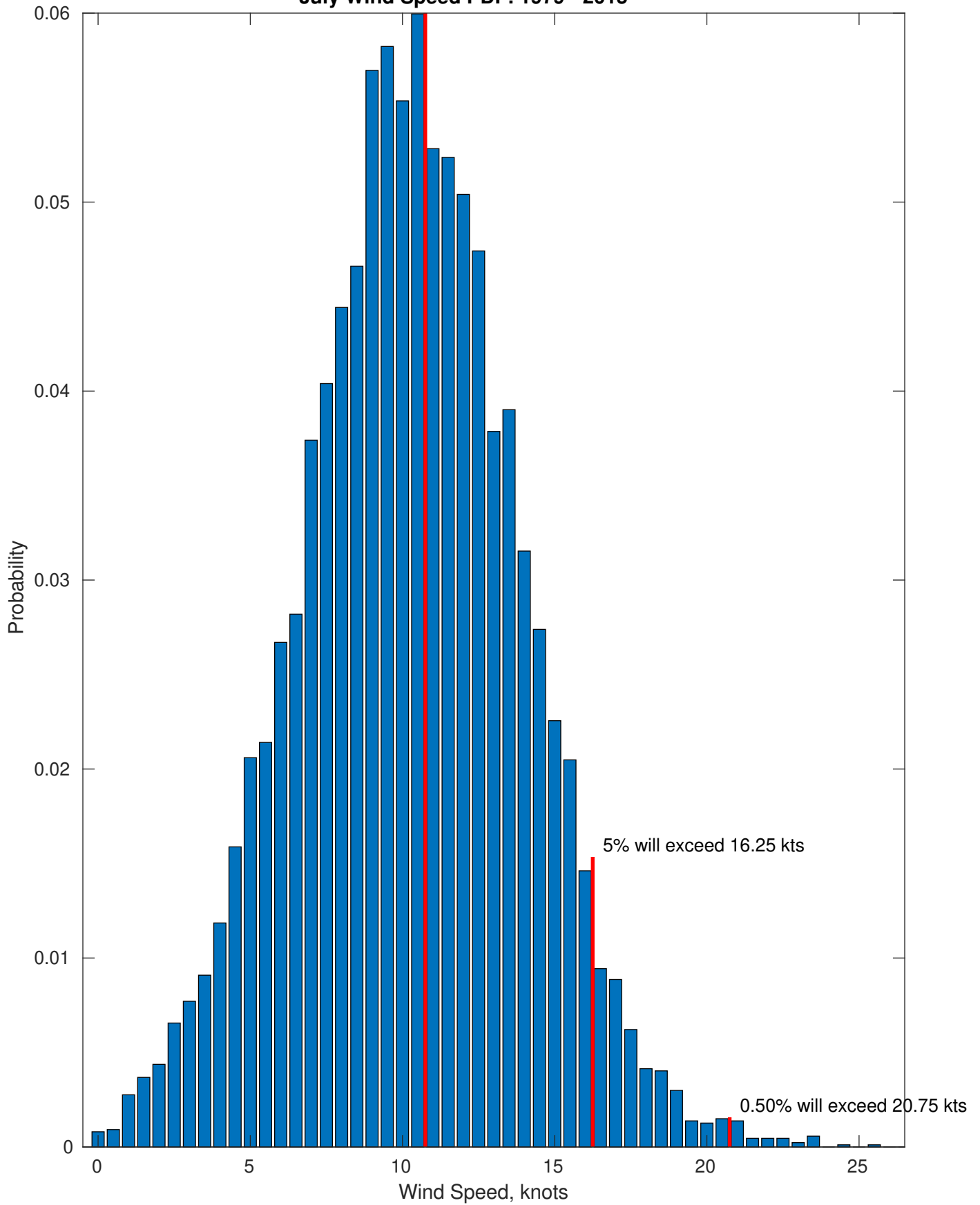


### Swell: 97.51%



Most Frequent Wind Speed: 10.75 kts

July Wind Speed PDF: 1979 - 2015

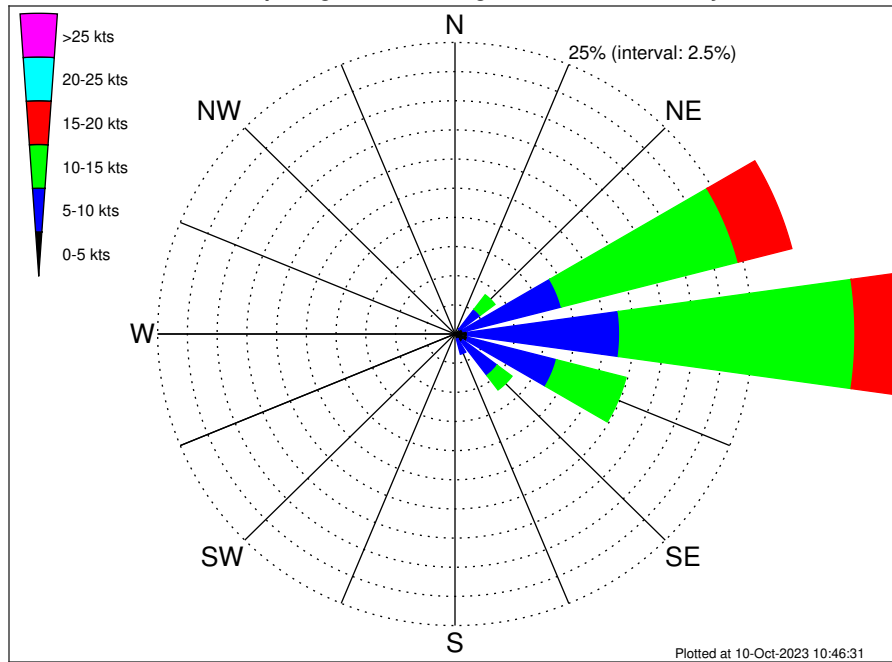








Staatsolie Suriname MBES-SGE Seep Program Climatological Wind Rose for July: 1979 - 2015



Joint Frequency Distribution Table

	N	NNE	NE	ENE	E	ESE	SE	SSE	S	SSW	SW	WSW	W	WNW	NW	NNW	Total
calm	0.01	0.01	0.03	0.01	•	0.01	0.03	•	0.01	•	•	•	0.02	•	•	0.02	0.17
0 - 5 kts	0.14	0.31	0.47	0.69	1.06	1.09	0.81	0.46	0.29	0.24	0.15	0.17	0.08	0.05	0.13	0.06	6.19
5 - 10 kts	0.31	0.46	2.15	8.54	12.80	7.71	3.61	1.34	0.61	0.09	0.14	0.12	0.08	0.03	0.05	0.06	38.09
10 - 15 kts	•	0.16	1.55	15.35	19.77	6.04	1.55	0.60	0.21	0.06	0.05	0.02	0.03	•	•	0.01	45.41
15 - 20 kts	•	0.03	0.23	4.66	3.88	0.51	0.10	0.05	0.01	•	•	•	•	•	•	•	9.47
20 - 25 kts	•	•	0.06	0.24	0.29	0.05	•	•	0.01	•	•	•	•	•	•	•	0.64
25 - 30 kts	•	•	•	0.01	•	•	•	•	•	•	•	•	•	•	•	•	0.01
30 - 35 kts	•	•	•	•	•	•	•	•	•	•	•	•	•	•	•	•	•
35 - 40 kts	•	•	•	•	•	•	•	•	•	•	•	•	•	•	•	•	•
40 - 45 kts	•	•	•	•	•	•	•	•	•	•	•	•	•	•	•	•	•
45 - 50 kts	•	•	•	•	•	•	•	•	•	•	•	•	•	•	•	•	•
Total	0.46	0.98	4.50	29.51	37.79	15.41	6.11	2.44	1.14	0.39	0.33	0.31	0.22	0.08	0.17	0.15	100.00