

Staatsolie Suriname MBES-SGE Seep Program - June

Latitude: 8.45 N Longitude: 53.44 W

Weather Days

Wave Height > 6.0 ft Mean: 18.5 days Range: 12.7 - 24.4 days p50:17.5 days p75:15.5 days p90:11.5 days

Wave Height > 7.0 ft Mean: 8.9 days Range: 4.0 - 13.7 days p50:8.5 days p75:5.5 days p90:2.5 days

Wave Height > 8.0 ft Mean: 2.7 days Range: 0.0 - 5.4 days p50:3 days p75:1.5 days p90:0.5 days

Wind Speed > 10.0 knots Mean: 26.5 days Range: 23.4 - 29.7 days p50:27.5 days p75:25.5 days p90:23 days

Wind Speed > 15.0 knots Mean: 12.2 days Range: 7.6 - 16.8 days p50:13.5 days p75:9.5 days p90:6 days

Wind Speed > 20.0 knots Mean: 0.8 days Range: 0.0 - 1.6 days p50:1 days p75:0.5 days p90:0.5 days

Working Window

Wave Height < 6.0 ft
A 1 day or longer window will statistically occur 2.9 times per month
A 2 day or longer window will statistically occur 1.8 times per month
A 3 day or longer window will statistically occur 1.2 times per month

Wave Height < 7.0 ft
A 1 day or longer window will statistically occur 4.2 times per month
A 2 day or longer window will statistically occur 3.2 times per month
A 3 day or longer window will statistically occur 2.3 times per month

Wave Height < 8.0 ft
A 1 day or longer window will statistically occur 3.1 times per month
A 2 day or longer window will statistically occur 2.6 times per month
A 3 day or longer window will statistically occur 2.2 times per month

Waves

Mean Height: 6 - 8 ft

The wave heights will occasionally reach 8 - 10 ft, but rarely higher.

Mean Period: 6 - 8 sec

The wave periods will occasionally reach 10 - 12 sec, but rarely longer.

Principle Direction, from: ENE

WindSea/Swell: 14% / 86%

Winds

Mean Speed: 10 - 15 kts

The winds will occasionally reach 20 - 25 kts, but rarely greater.

Principle Direction, from: E

Currents

Mean Speed: 0.75-1.00 kts

The currents will occasionally reach 2.25-2.50 kts, but rarely greater.

Principle Direction, to: NNW

Weather Days

Current Speed > 1.0 knots Mean: 11.2 days Range: 4.8 - 17.6 days p50:13 days p75:6 days p90:3 days

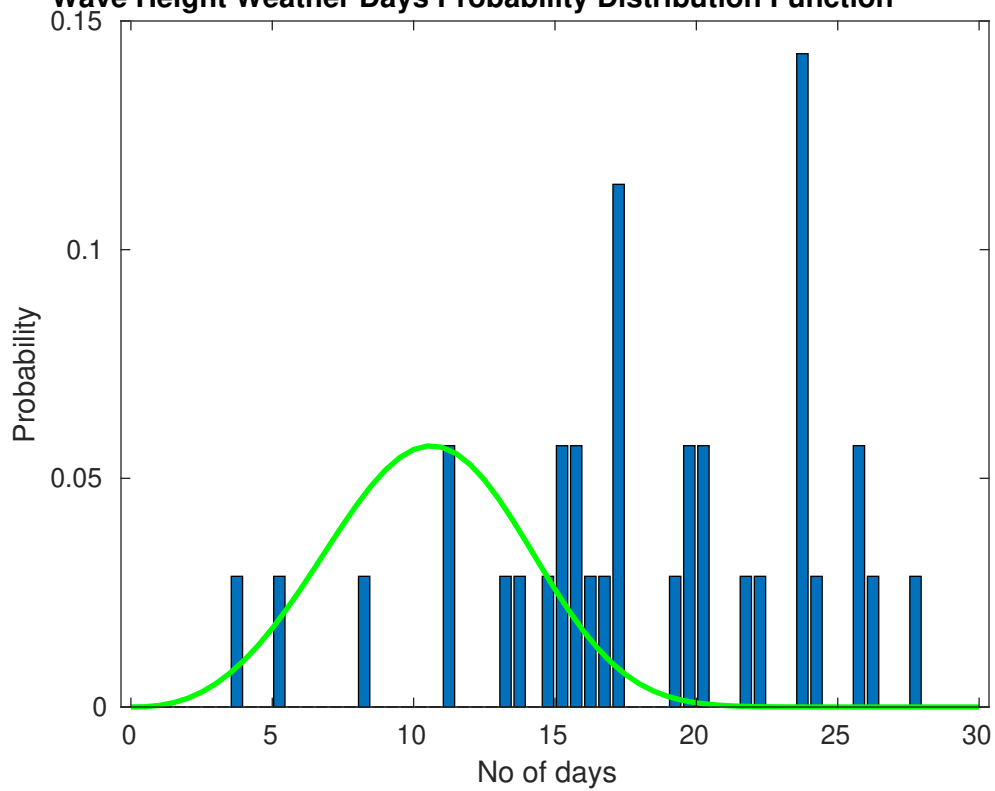
Current Speed > 1.5 knots Mean: 4.4 days Range: 0.0 - 9.1 days p50:4 days p75:1 days p90:1 days

Current Speed > 2.0 knots Mean: 1.4 days Range: 0.0 - 4.0 days p50:1 days p75:1 days p90:1 days

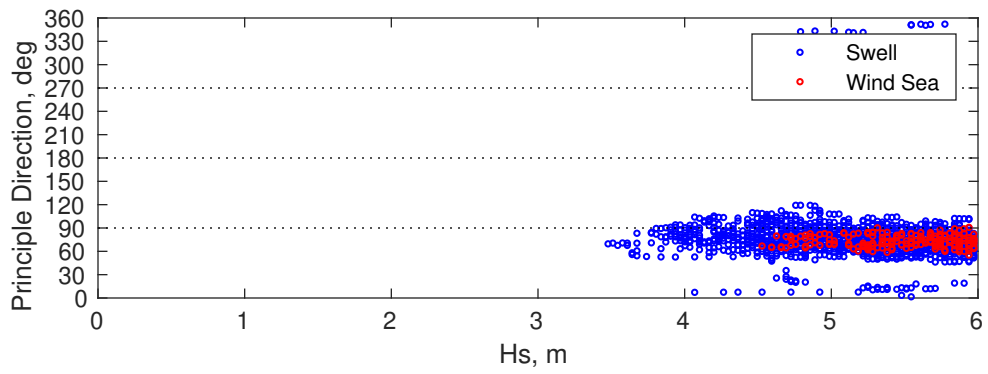
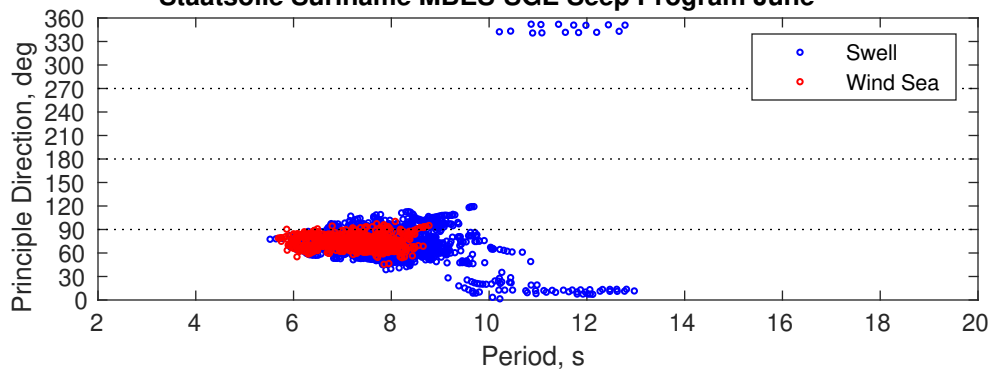
Severe Storms

Severe storms with gale force winds and extreme waves are not expected during this month.

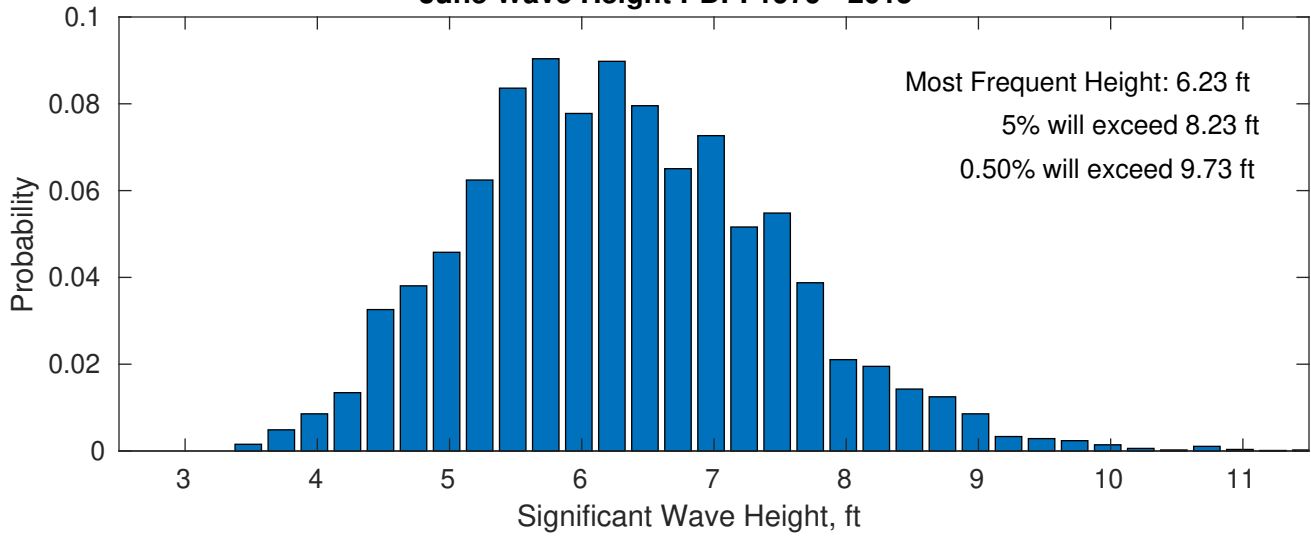
Wave Height Weather Days Probability Distribution Function



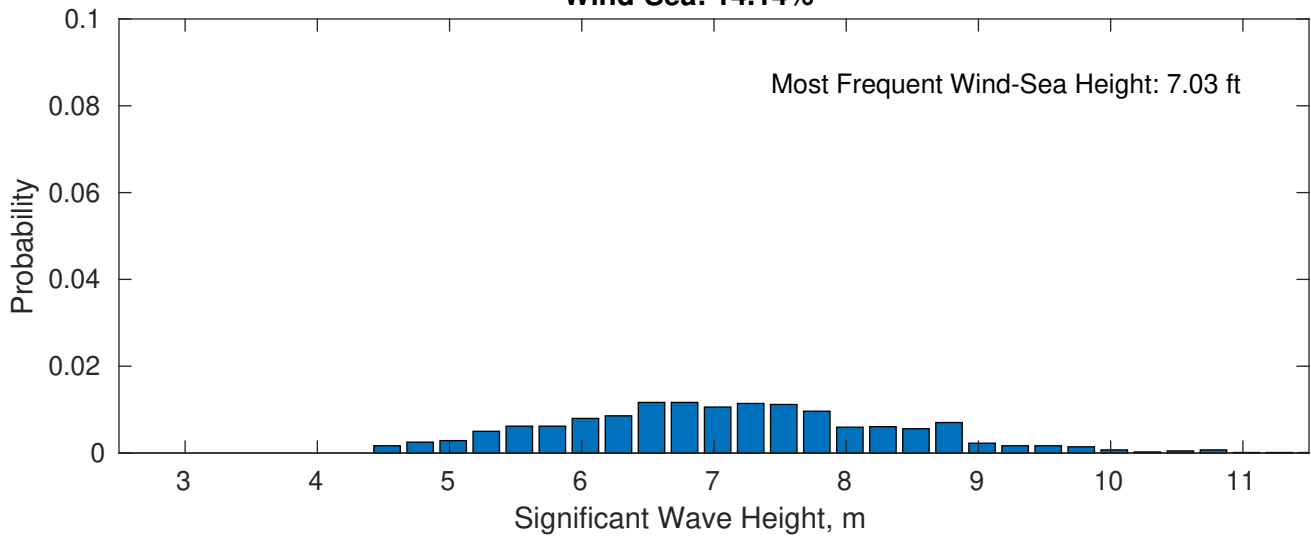
Staatsolie Suriname MBES-SGE Seep Program June



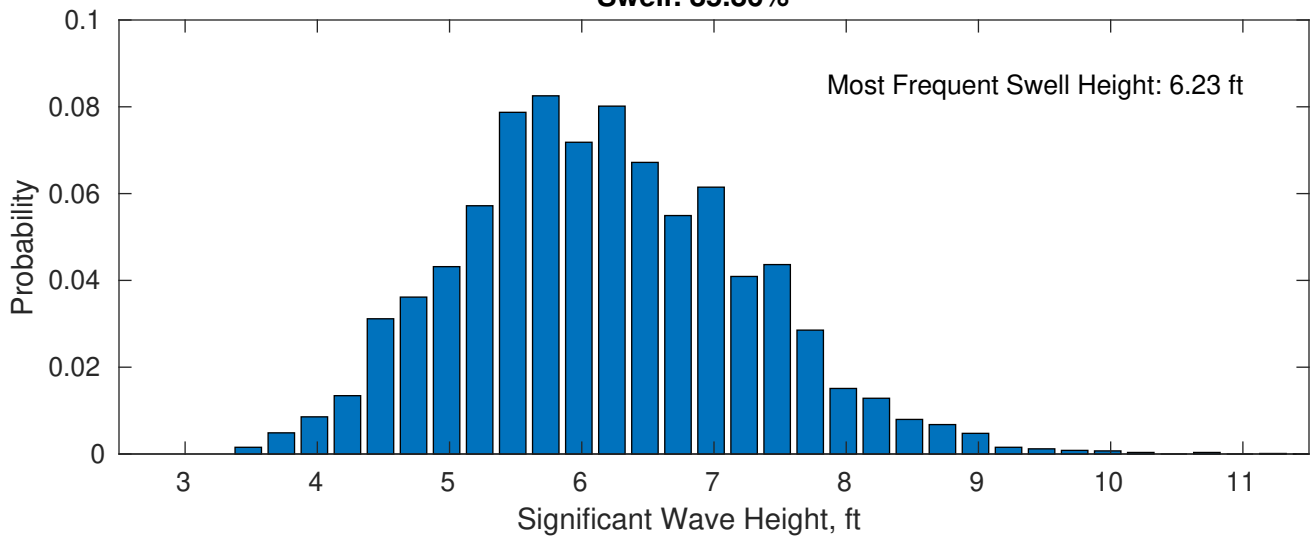
June Wave Height PDF: 1979 - 2015



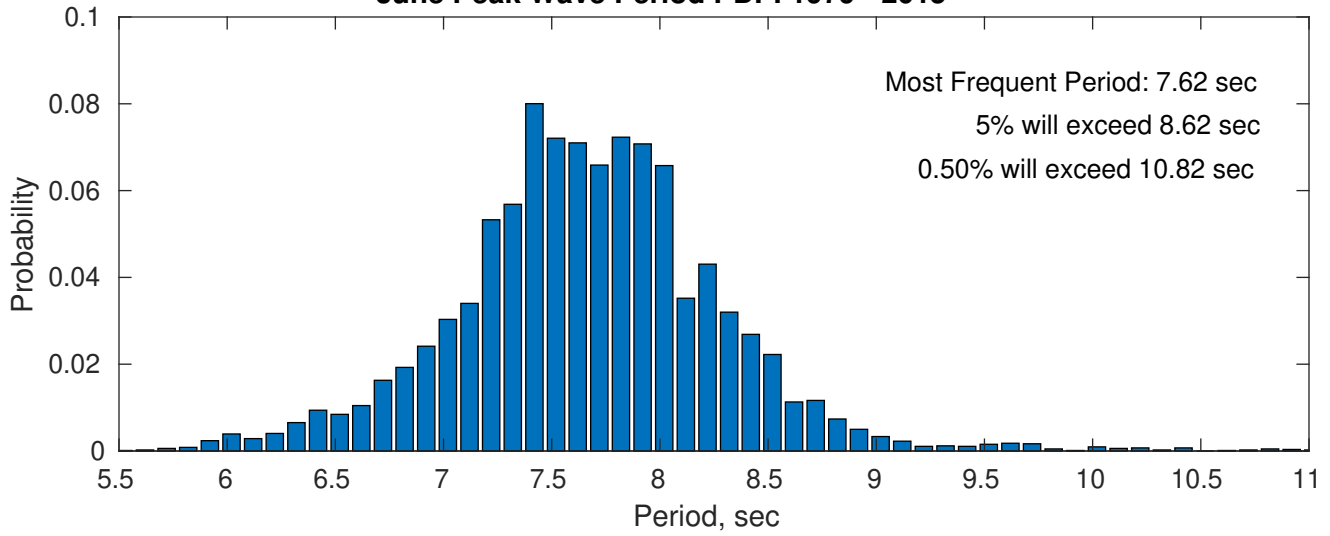
Wind-Sea: 14.14%



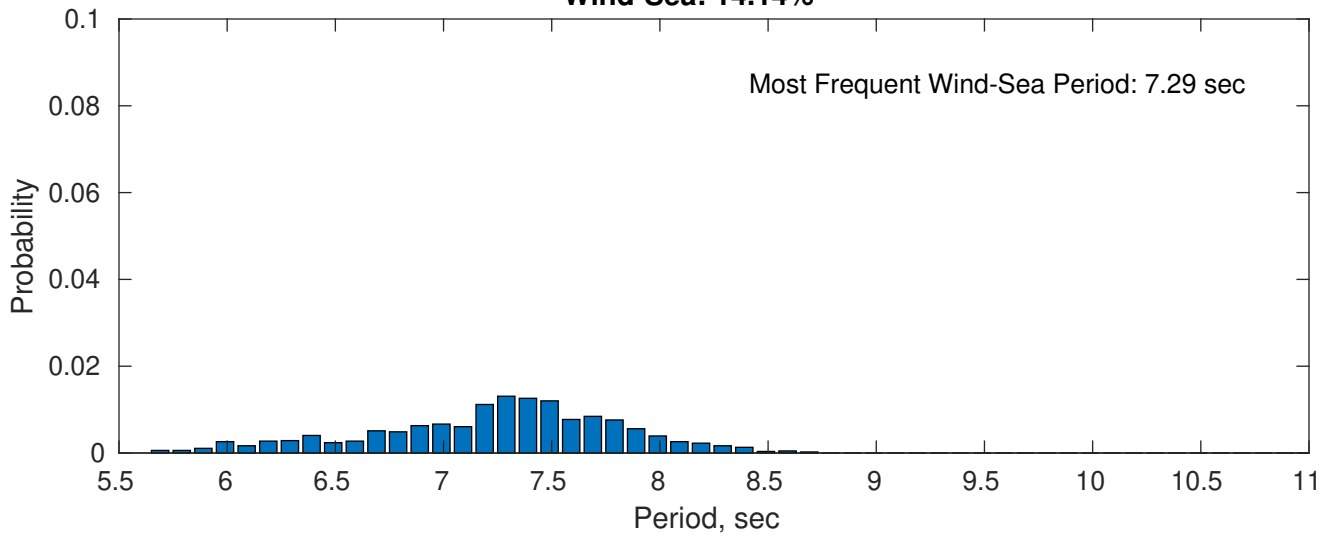
Swell: 85.86%



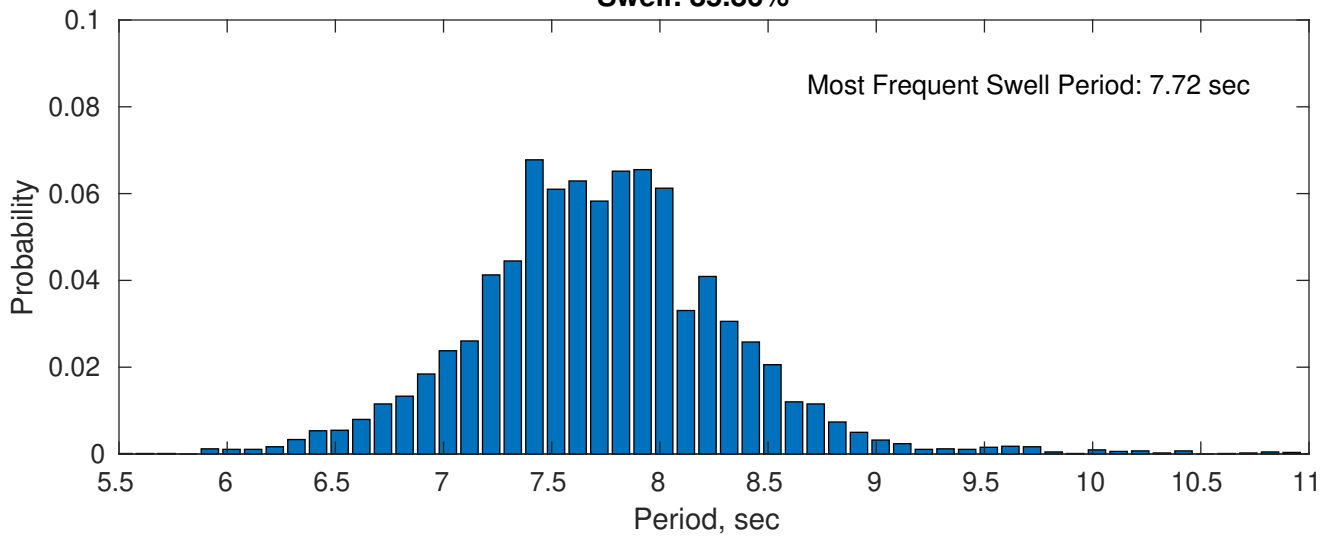
June Peak Wave Period PDF: 1979 - 2015



Wind-Sea: 14.14%

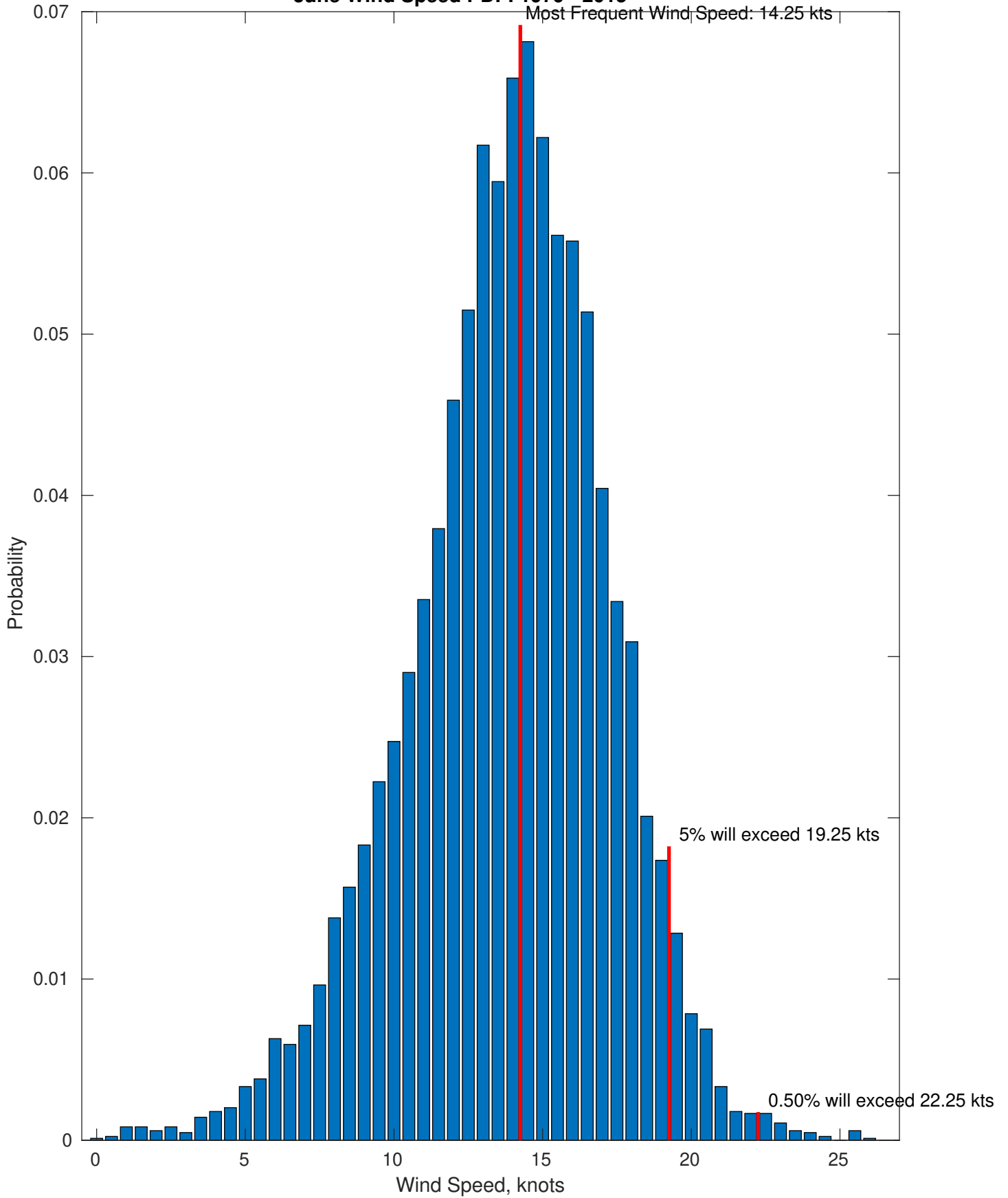


Swell: 85.86%

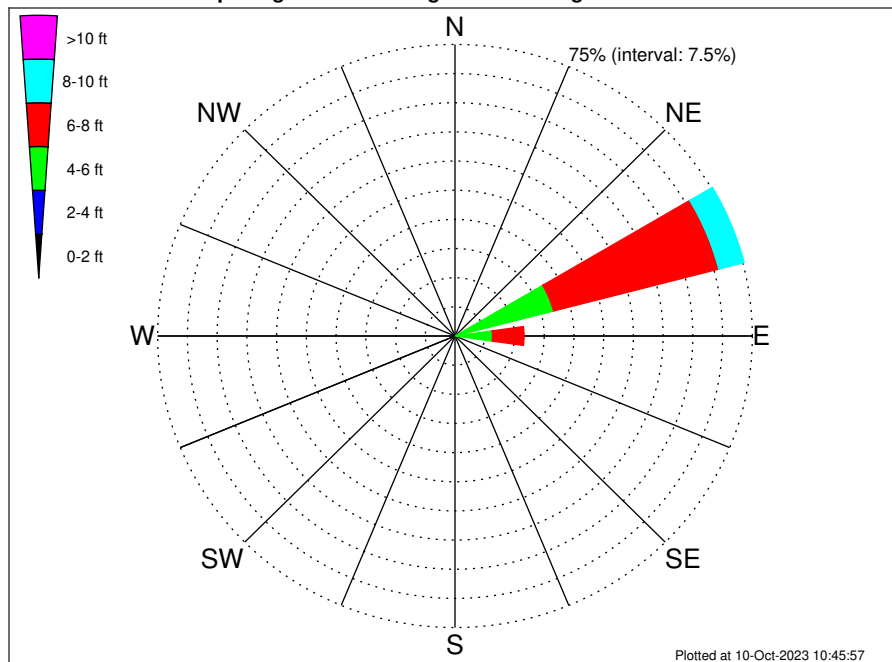


June Wind Speed PDF: 1979 - 2015

Most Frequent Wind Speed: 14.25 kts



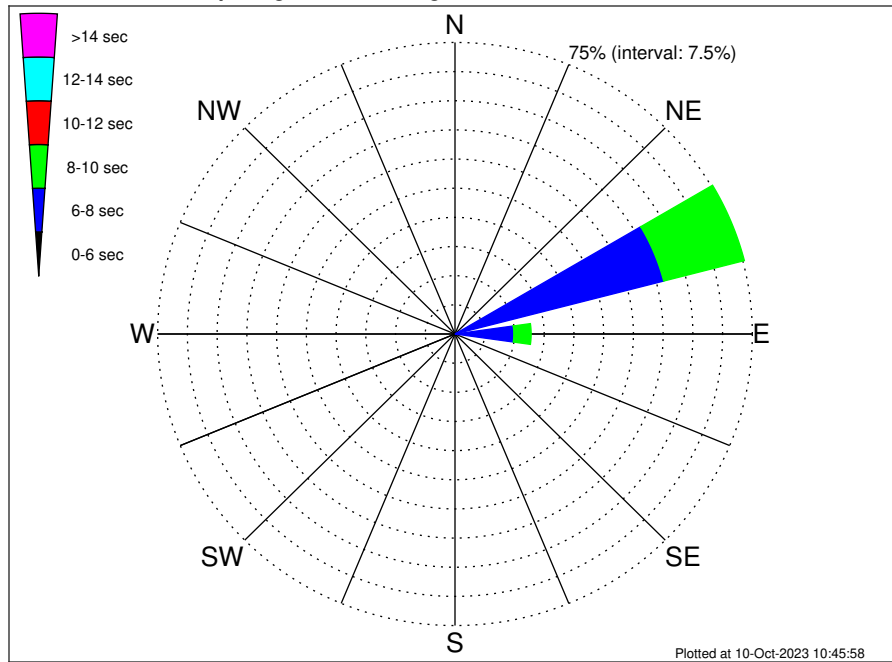
Staatsolie Suriname MBES-SGE Seep Program Climatological WaveHeight Rose for June: 1979 - 2015



Joint Frequency Distribution Table

	N	NNE	NE	ENE	E	ESE	SE	SSE	S	SSW	SW	WSW	W	WNW	NW	NNW	Total
calm
1 - 2 ft
2 - 4 ft	.	.	0.06	0.27	0.31	0.64
4 - 6 ft	0.31	0.43	1.27	25.40	9.16	0.82	0.10	37.48
6 - 8 ft	0.07	0.04	1.80	43.06	7.96	0.08	53.00
8 - 10 ft	.	.	0.30	6.60	1.55	8.44
10 - 12 ft	.	.	.	0.19	0.21	0.40
12 - 14 ft	0.02	0.02
14 - 16 ft
16 - 18 ft
> 18 ft
Total	0.38	0.46	3.42	75.53	19.21	0.90	0.10	100.00

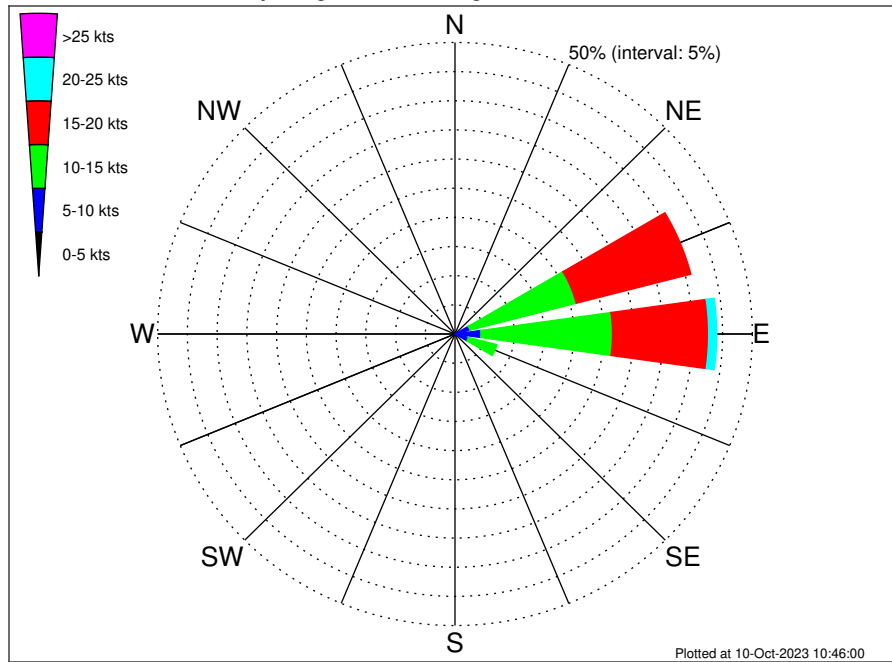
Staatsolie Suriname MBES-SGE Seep Program Climatological WavePeriod Rose for June: 1979 - 2015



Joint Frequency Distribution Table

	N	NNE	NE	ENE	E	ESE	SE	SSE	S	SSW	SW	WSW	W	WNW	NW	NNW	Total
calm
1 - 2 sec
2 - 4 sec
4 - 6 sec	.	.	.	0.27	0.13	0.40
6 - 8 sec	.	.	1.69	54.11	14.71	0.20	70.71
8 - 10 sec	0.06	0.13	1.71	21.01	4.36	0.70	27.98
10 - 12 sec	0.20	0.25	0.02	0.13	0.07	0.68
12 - 14 sec	0.12	0.08	0.02	0.23
14 - 16 sec
18 - 20 sec
22 - 24 sec
Total	0.38	0.46	3.42	75.53	19.21	0.90	0.10	100.00

Staatsolie Suriname MBES-SGE Seep Program Climatological Wind Rose for June: 1979 - 2015



Joint Frequency Distribution Table

	N	NNE	NE	ENE	E	ESE	SE	SSE	S	SSW	SW	WSW	W	WNW	NW	NNW	Total
calm	•	•	•	•	•	0.01	•	•	0.01	•	•	0.01	•	•	•	•	0.04
0 - 5 kts	0.01	0.05	0.07	0.06	0.12	0.12	0.15	0.05	0.06	0.06	0.01	0.02	0.01	0.04	0.04	0.01	0.88
5 - 10 kts	•	0.04	0.54	2.53	4.23	2.19	0.62	0.30	0.11	0.01	0.02	•	0.01	•	0.02	•	10.62
10 - 15 kts	•	0.06	0.99	18.47	22.13	4.95	0.84	0.23	0.07	0.02	•	0.02	•	•	•	•	47.78
15 - 20 kts	•	0.01	0.52	19.91	16.17	1.12	0.25	0.06	0.01	•	•	•	•	•	•	•	38.05
20 - 25 kts	•	•	0.07	1.00	1.36	0.12	•	0.01	•	•	•	•	•	•	•	•	2.56
25 - 30 kts	•	•	•	0.01	0.05	•	0.01	•	•	•	•	•	•	•	•	•	0.07
30 - 35 kts	•	•	•	•	•	•	•	•	•	•	•	•	•	•	•	•	•
35 - 40 kts	•	•	•	•	•	•	•	•	•	•	•	•	•	•	•	•	•
40 - 45 kts	•	•	•	•	•	•	•	•	•	•	•	•	•	•	•	•	•
45 - 50 kts	•	•	•	•	•	•	•	•	•	•	•	•	•	•	•	•	•
Total	0.01	0.15	2.19	41.98	44.06	8.50	1.88	0.64	0.26	0.10	0.04	0.06	0.02	0.04	0.06	0.01	100.00