

# Staatsolie Suriname MBES-SGE Seep Program - May

Latitude: 8.45 N Longitude: 53.44 W

## Weather Days

Wave Height > 6.0 ft Mean: 22.8 days Range: 17.4 - 28.2 days p50:25.5 days p75:19.5 days p90:14.5 days

Wave Height > 7.0 ft Mean: 13.1 days Range: 6.8 - 19.3 days p50:15 days p75:8.5 days p90:4.5 days

Wave Height > 8.0 ft Mean: 6.1 days Range: 1.8 - 10.4 days p50:8 days p75:3.5 days p90:1.5 days

Wind Speed > 10.0 knots Mean: 29.2 days Range: 27.9 - 30.0 days p50:30 days p75:29 days p90:28 days

Wind Speed > 15.0 knots Mean: 18.2 days Range: 13.2 - 23.1 days p50:19.5 days p75:15.5 days p90:10.5 days

Wind Speed > 20.0 knots Mean: 1.1 days Range: 0.1 - 2.0 days p50:1 days p75:0.5 days p90:0.5 days

## Working Window

Wave Height < 6.0 ft  
A 1 day or longer window will statistically occur 1.8 times per month  
A 2 day or longer window will statistically occur 1.1 times per month  
A 3 day or longer window will statistically occur 0.8 times per month

Wave Height < 7.0 ft  
A 1 day or longer window will statistically occur 3.5 times per month  
A 2 day or longer window will statistically occur 2.4 times per month  
A 3 day or longer window will statistically occur 1.9 times per month

Wave Height < 8.0 ft  
A 1 day or longer window will statistically occur 3.5 times per month  
A 2 day or longer window will statistically occur 2.6 times per month  
A 3 day or longer window will statistically occur 2.2 times per month

## Waves

Mean Height: 6 - 8 ft

The wave heights will occasionally reach 10 - 12 ft, but rarely higher.

Mean Period: 6 - 8 sec

The wave periods will occasionally reach 12 - 14 sec, but rarely longer.

Principle Direction, from: ENE

WindSea/Swell: 18% / 82%

## Winds

Mean Speed: 15 - 20 kts

The winds will occasionally reach 20 - 25 kts, but rarely greater.

Principle Direction, from: ENE

## Currents

Mean Speed: 0.75-1.00 kts

The currents will occasionally reach 2.25-2.50 kts, but rarely greater.

Principle Direction, to: NNW

## Weather Days

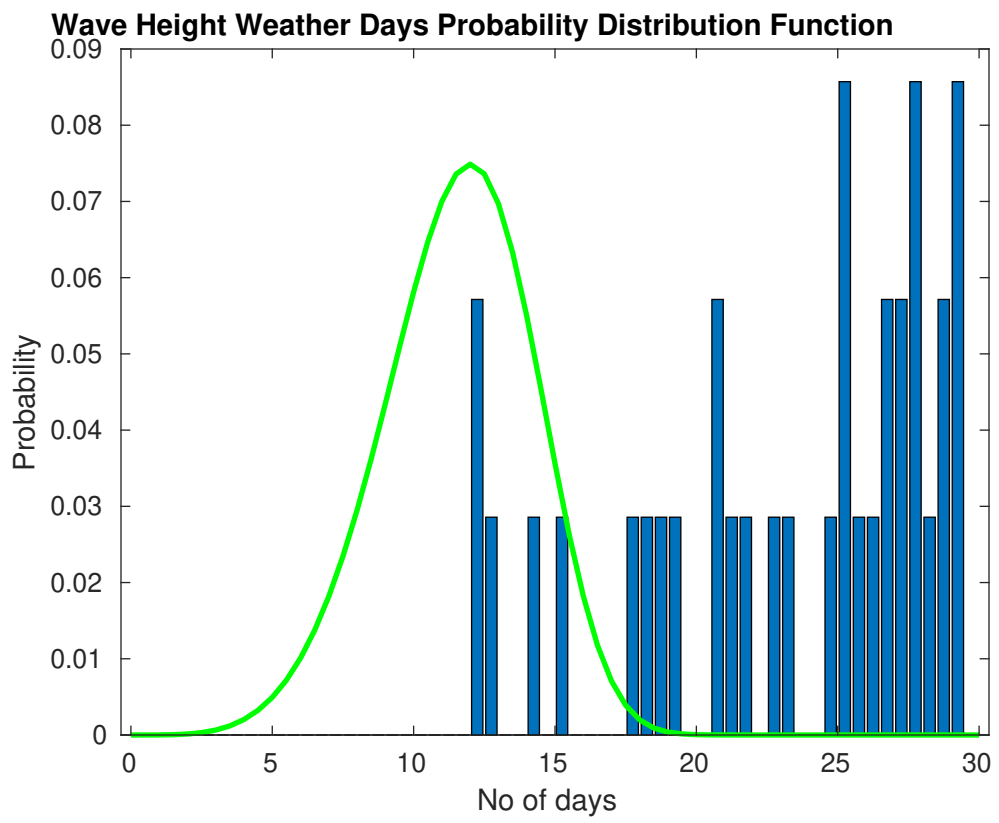
Current Speed > 1.0 knots Mean: 14.9 days Range: 9.2 - 20.7 days p50:15 days p75:11 days p90:8 days

Current Speed > 1.5 knots Mean: 6.2 days Range: 1.9 - 10.6 days p50:8 days p75:3 days p90:2 days

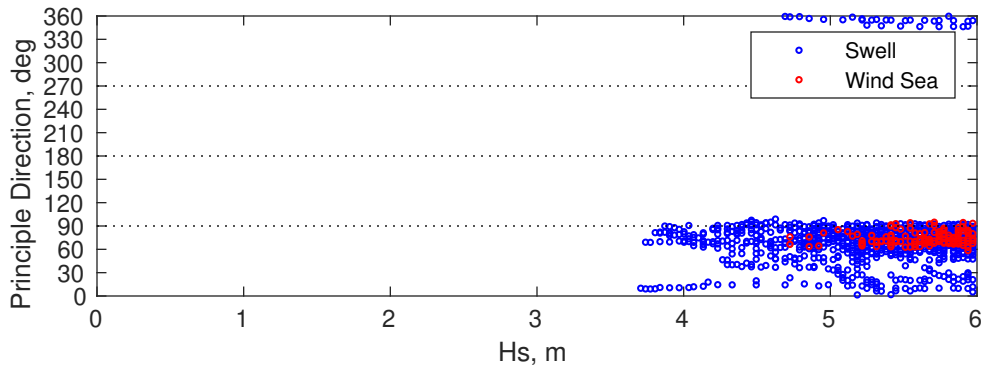
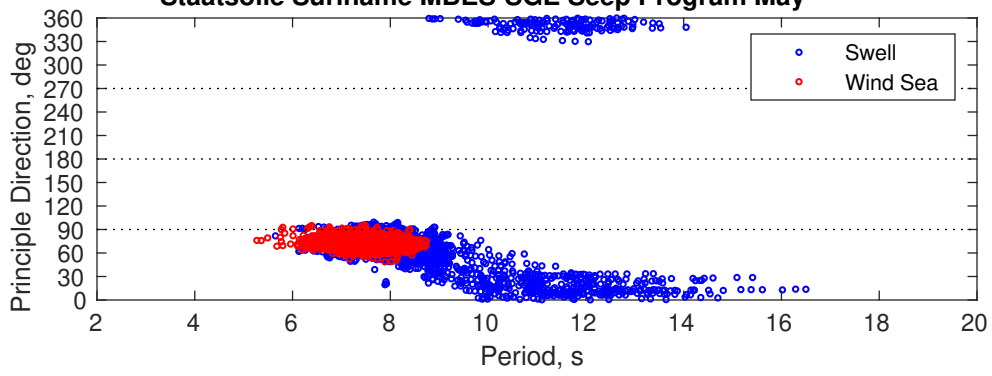
Current Speed > 2.0 knots Mean: 2.3 days Range: 0.0 - 5.1 days p50:3 days p75:1 days p90:1 days

## Severe Storms

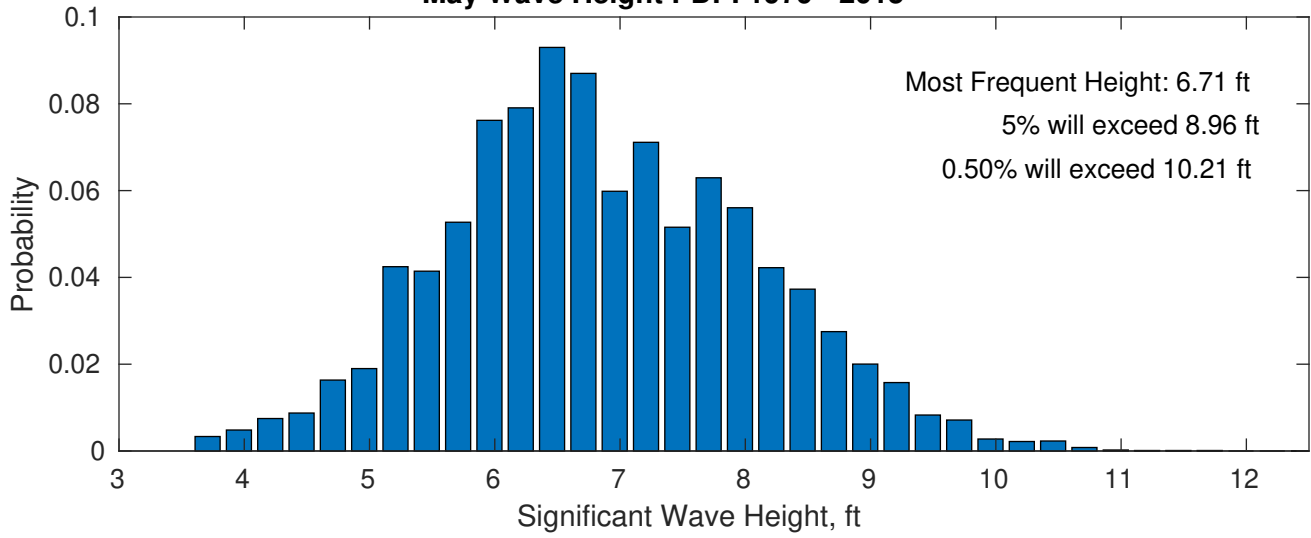
Severe storms with gale force winds and extreme waves are not expected during this month.



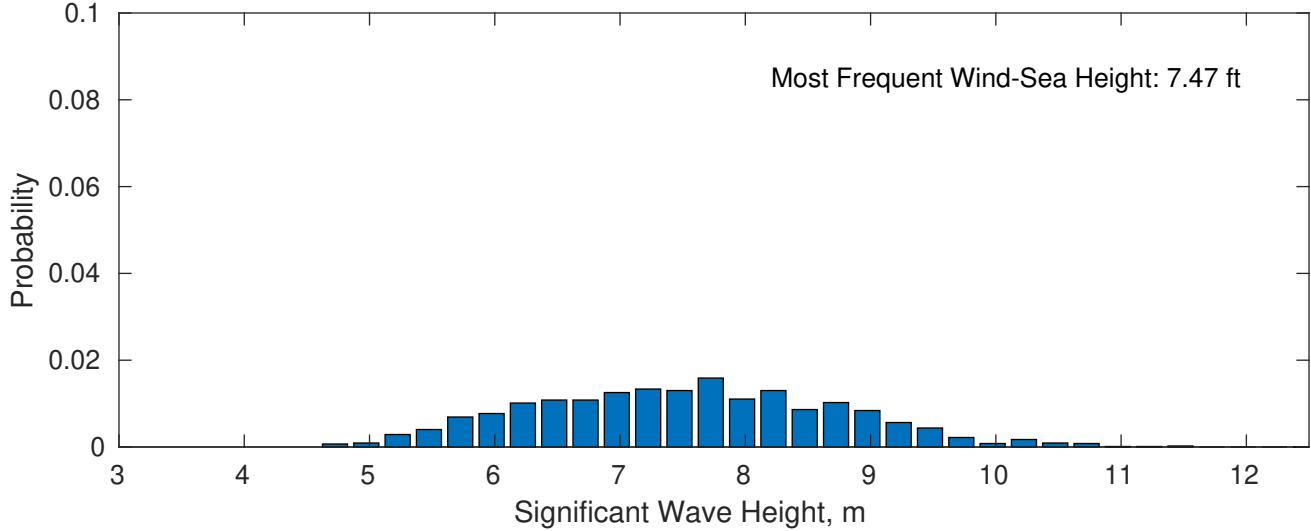
### Staatsolie Suriname MBES-SGE Seep Program May



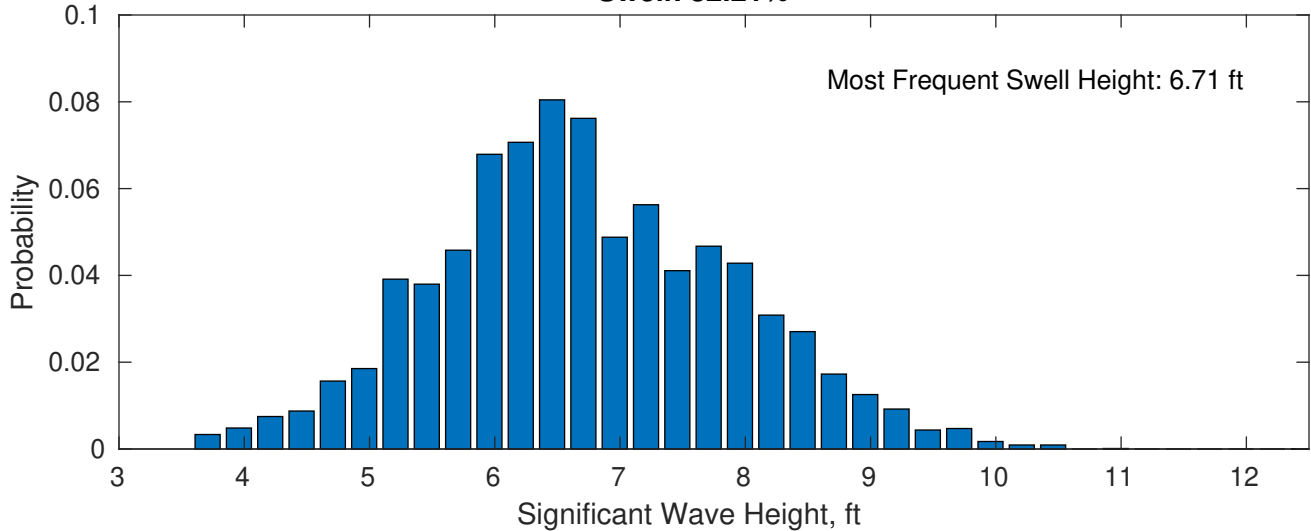
**May Wave Height PDF: 1979 - 2015**



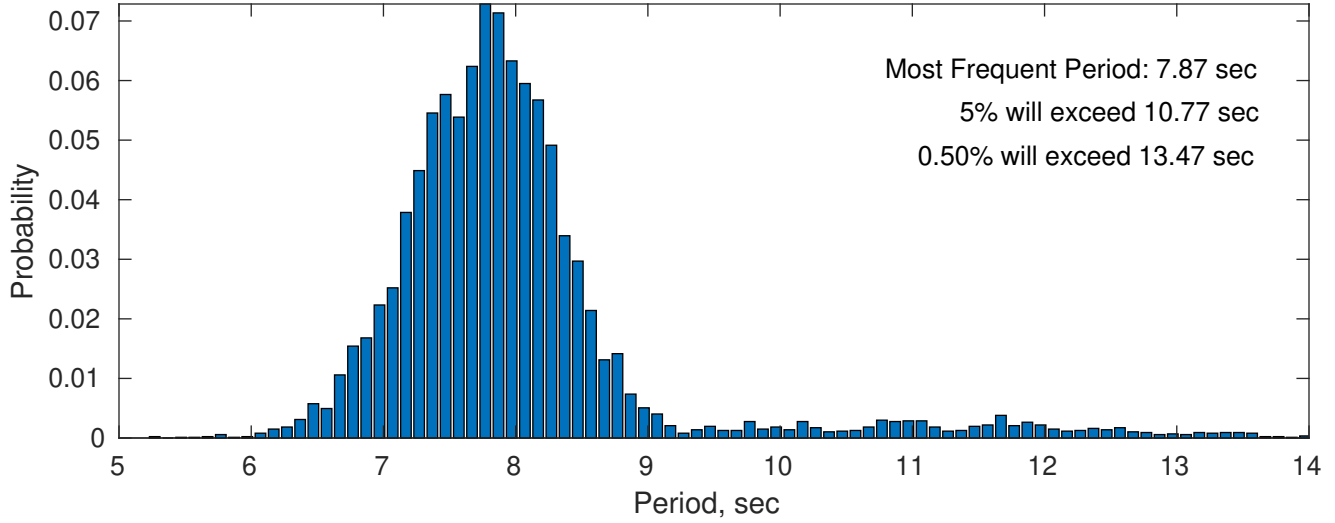
**Wind-Sea: 17.79%**



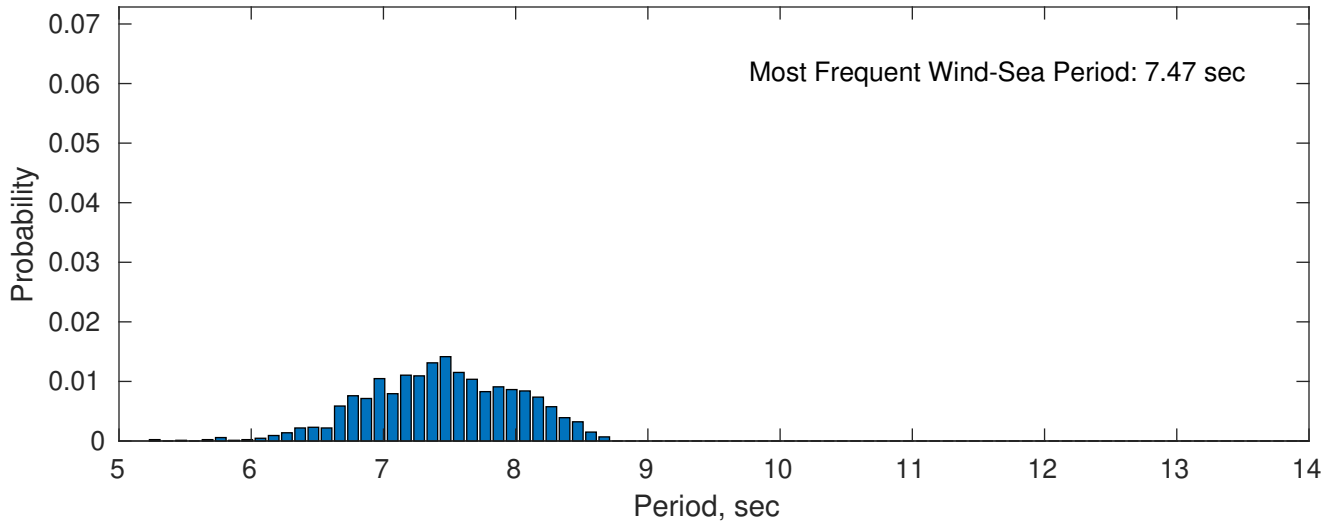
**Swell: 82.21%**



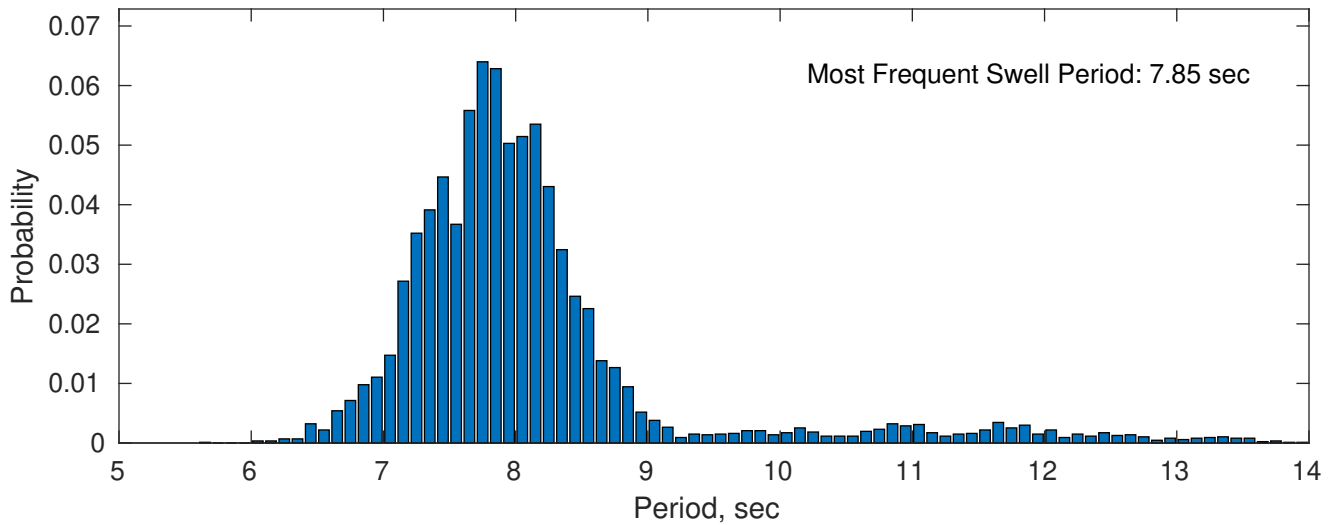
### May Peak Wave Period PDF: 1979 - 2015



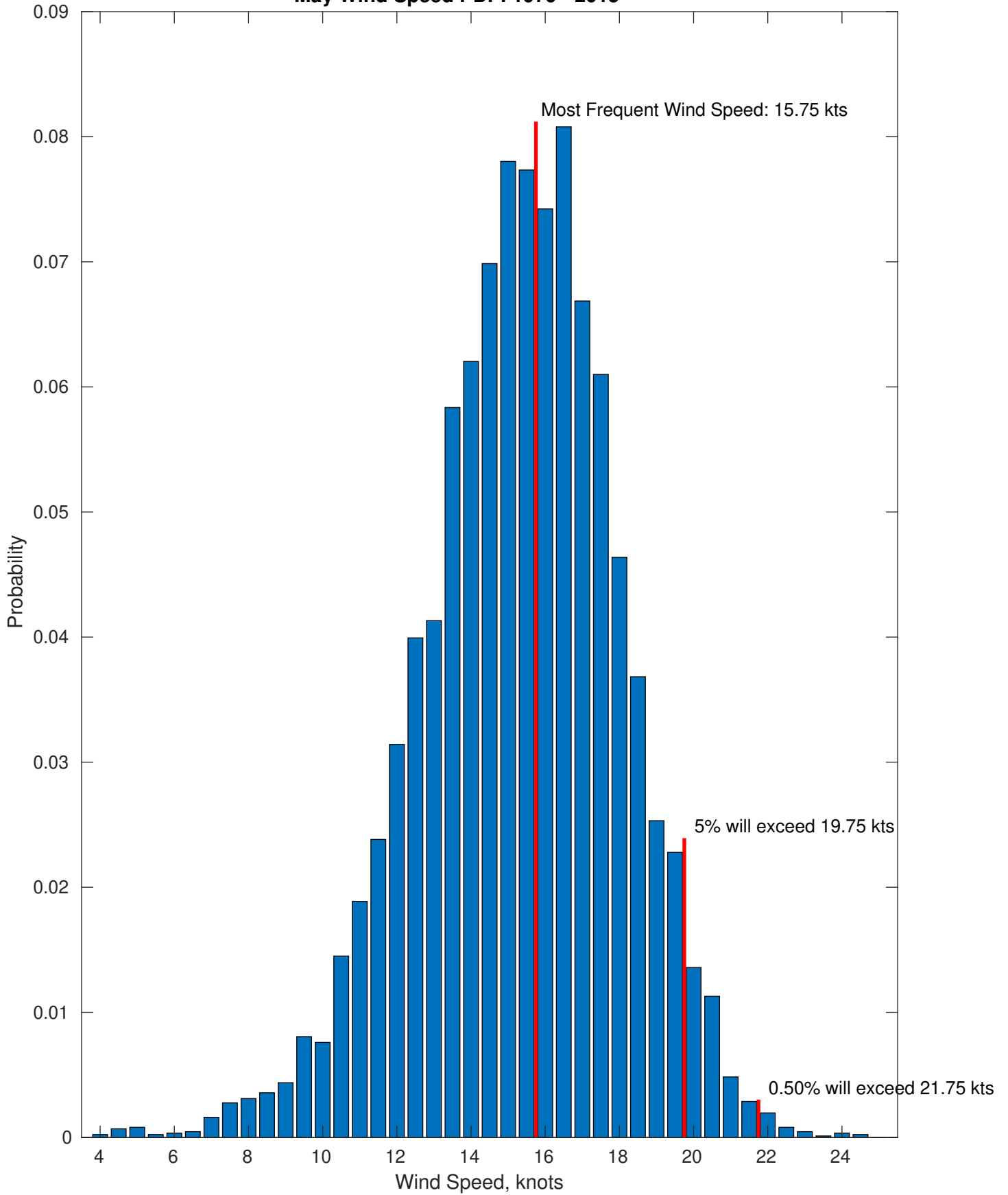
### Wind-Sea: 17.79%



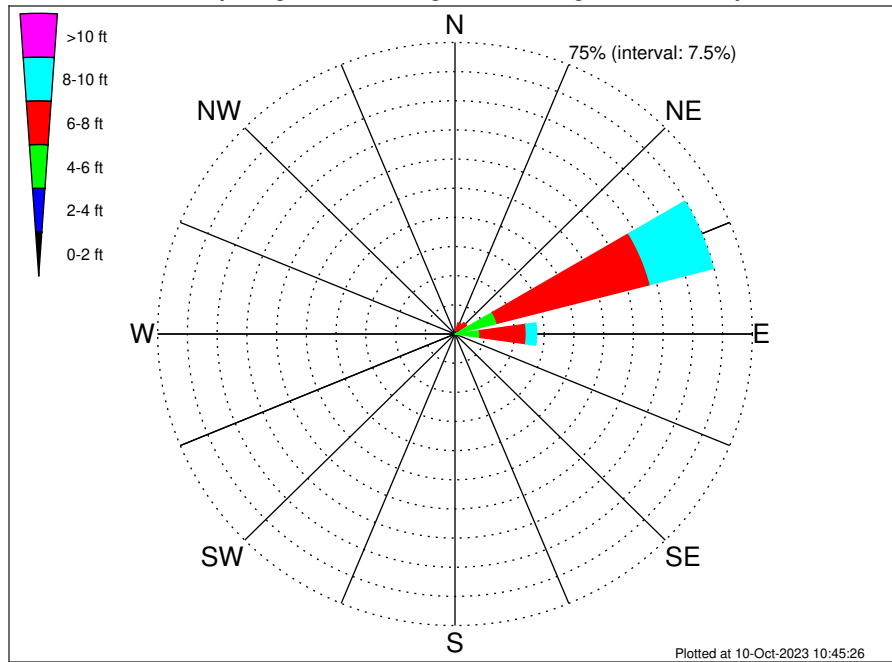
### Swell: 82.21%



May Wind Speed PDF: 1979 - 2015



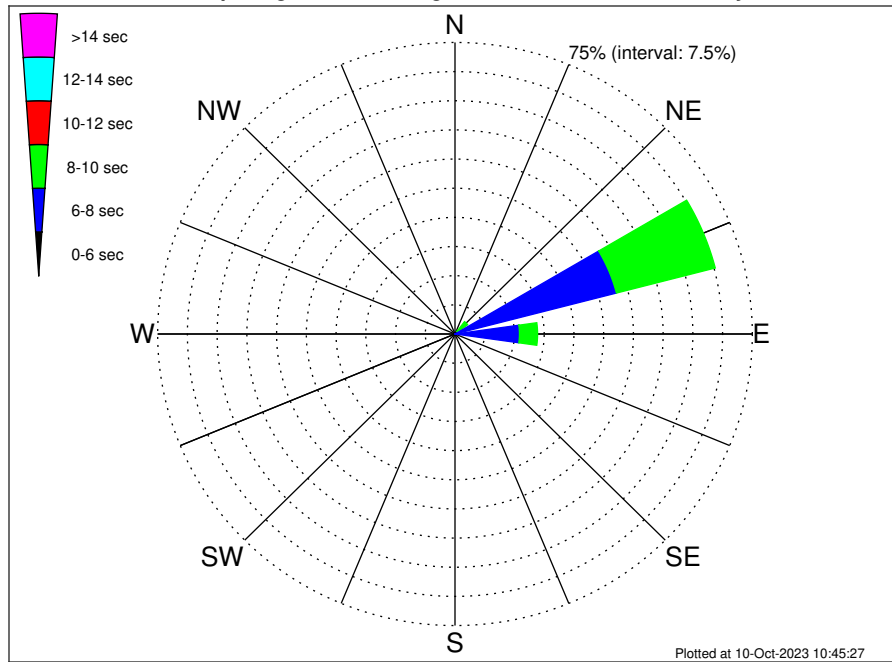
Staatsolie Suriname MBES-SGE Seep Program Climatological WaveHeight Rose for May: 1979 - 2015



Joint Frequency Distribution Table

	N	NNE	NE	ENE	E	ESE	SE	SSE	S	SSW	SW	WSW	W	WNW	NW	NNW	Total
calm	.	.	.	.	.	.	.	.	.	.	.	.	.	.	.	.	.
1 - 2 ft	.	.	.	.	.	.	.	.	.	.	.	.	.	.	.	.	.
2 - 4 ft	0.09	.	.	0.09	0.21	.	.	.	.	.	.	.	.	.	.	.	0.39
4 - 6 ft	0.55	0.86	1.46	10.86	6.09	.	.	.	.	.	.	.	.	.	.	0.10	19.93
6 - 8 ft	1.59	2.08	2.19	39.91	11.69	.	.	.	.	.	.	.	.	.	.	0.62	58.08
8 - 10 ft	0.63	0.51	0.61	16.41	2.59	.	.	.	.	.	.	.	.	.	.	.	20.75
10 - 12 ft	.	.	.	0.59	0.25	.	.	.	.	.	.	.	.	.	.	.	0.84
12 - 14 ft	.	.	.	.	.	.	.	.	.	.	.	.	.	.	.	.	.
14 - 16 ft	.	.	.	.	.	.	.	.	.	.	.	.	.	.	.	.	.
16 - 18 ft	.	.	.	.	.	.	.	.	.	.	.	.	.	.	.	.	.
> 18 ft	.	.	.	.	.	.	.	.	.	.	.	.	.	.	.	.	.
Total	2.87	3.45	4.26	67.87	20.83	.	.	.	.	.	.	.	.	.	.	0.73	100.00

Staatsolie Suriname MBES-SGE Seep Program Climatological WavePeriod Rose for May: 1979 - 2015

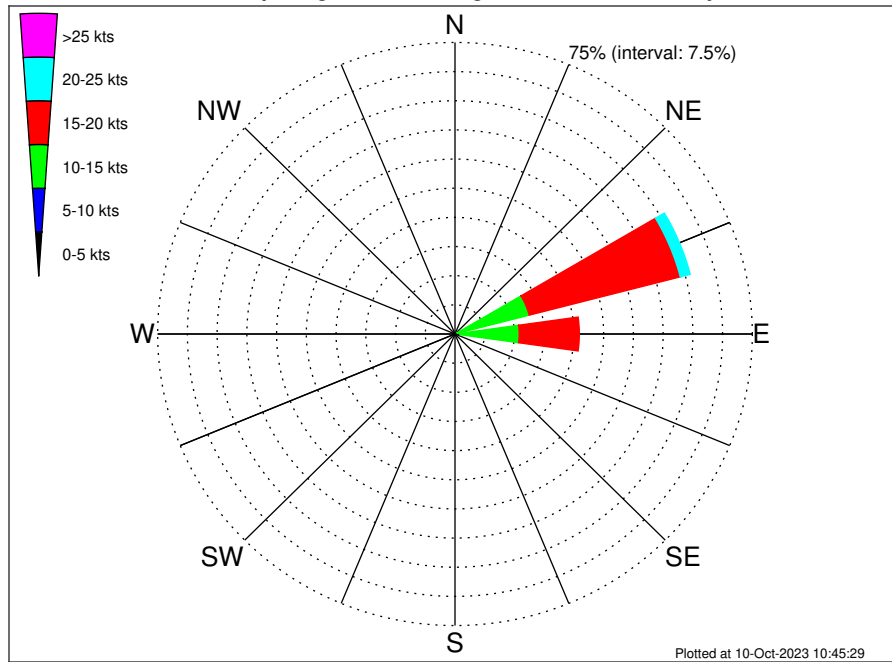


Joint Frequency Distribution Table

	N	NNE	NE	ENE	E	ESE	SE	SSE	S	SSW	SW	WSW	W	WNW	NW	NNW	Total
calm	.	.	.	.	.	.	.	.	.	.	.	.	.	.	.	.	.
1 - 2 sec	.	.	.	.	.	.	.	.	.	.	.	.	.	.	.	.	.
2 - 4 sec	.	.	.	.	.	.	.	.	.	.	.	.	.	.	.	.	.
4 - 6 sec	.	.	.	0.07	0.07	.	.	.	.	.	.	.	.	.	.	.	0.14
6 - 8 sec	.	0.03	0.85	42.00	16.19	.	.	.	.	.	.	.	.	.	.	.	59.07
8 - 10 sec	0.33	0.64	3.13	25.75	4.57	.	.	.	.	.	.	.	.	.	.	.	34.42
10 - 12 sec	1.81	1.59	0.28	0.06	.	.	.	.	.	.	.	.	.	.	.	0.44	4.17
12 - 14 sec	0.64	0.96	.	.	.	.	.	.	.	.	.	.	.	.	.	0.28	1.88
14 - 16 sec	0.08	0.20	.	.	.	.	.	.	.	.	.	.	.	.	.	0.01	0.29
18 - 20 sec	.	0.03	.	.	.	.	.	.	.	.	.	.	.	.	.	.	0.03
22 - 24 sec	.	.	.	.	.	.	.	.	.	.	.	.	.	.	.	.	.
Total	2.87	3.45	4.26	67.87	20.83	.	.	.	.	.	.	.	.	.	.	0.73	100.00



Staatsolie Suriname MBES-SGE Seep Program Climatological Wind Rose for May: 1979 - 2015



Joint Frequency Distribution Table

	N	NNE	NE	ENE	E	ESE	SE	SSE	S	SSW	SW	WSW	W	WNW	NW	NNW	Total
calm	•	•	•	•	•	•	•	•	•	•	•	•	•	•	•	•	•
0 - 5 kts	•	•	•	0.02	0.01	0.01	0.02	0.01	•	•	•	•	•	•	•	0.01	0.09
5 - 10 kts	•	0.06	0.09	0.61	1.23	0.49	0.01	0.02	0.01	•	•	•	•	•	•	•	2.53
10 - 15 kts	•	•	1.45	18.69	14.95	1.62	0.06	•	•	•	•	•	•	•	•	•	36.77
15 - 20 kts	•	•	1.77	39.37	15.17	0.63	•	0.01	•	•	•	•	•	•	•	•	56.96
20 - 25 kts	•	•	0.14	2.60	0.87	0.03	•	•	•	•	•	•	•	•	•	•	3.65
25 - 30 kts	•	•	•	•	•	•	•	•	•	•	•	•	•	•	•	•	•
30 - 35 kts	•	•	•	•	•	•	•	•	•	•	•	•	•	•	•	•	•
35 - 40 kts	•	•	•	•	•	•	•	•	•	•	•	•	•	•	•	•	•
40 - 45 kts	•	•	•	•	•	•	•	•	•	•	•	•	•	•	•	•	•
45 - 50 kts	•	•	•	•	•	•	•	•	•	•	•	•	•	•	•	•	•
Total	•	0.06	3.45	61.30	32.24	2.80	0.09	0.05	0.01	•	•	•	•	•	•	0.01	100.00