

# Staatsolie Suriname MBES-SGE Seep Program - September

Latitude: 8.45 N Longitude: 53.44 W

## Weather Days

Wave Height > 6.0 ft Mean: 2.1 days Range: 0.0 - 5.0 days p50:3.5 days p75:1.5 days p90:1 days

Wave Height > 7.0 ft Mean: 0.3 days Range: 0.0 - 1.4 days p50:30 days p75:1 days p90:0.5 days

Wave Height > 8.0 ft Mean: 0.1 days Range: 0.0 - 0.4 days p50:30 days p75:30 days p90:0.5 days

Wind Speed > 10.0 knots Mean: 17.1 days Range: 13.0 - 21.2 days p50:18 days p75:15 days p90:11 days

Wind Speed > 15.0 knots Mean: 1.9 days Range: 0.4 - 3.3 days p50:2 days p75:1 days p90:0.5 days

Wind Speed > 20.0 knots Mean: 0.0 days Range: 0.0 - 0.1 days p50:0.5 days p75:0.5 days p90:0.5 days

## Working Window

Wave Height < 6.0 ft  
A 1 day or longer window will statistically occur 3.0 times per month  
A 2 day or longer window will statistically occur 2.6 times per month  
A 3 day or longer window will statistically occur 2.3 times per month

Wave Height < 7.0 ft  
A 1 day or longer window will statistically occur 1.6 times per month  
A 2 day or longer window will statistically occur 1.5 times per month  
A 3 day or longer window will statistically occur 1.5 times per month

Wave Height < 8.0 ft  
A 1 day or longer window will statistically occur 1.2 times per month  
A 2 day or longer window will statistically occur 1.2 times per month  
A 3 day or longer window will statistically occur 1.1 times per month

## Waves

Mean Height: 4 - 6 ft

The wave heights will occasionally reach 6 - 8 ft, but rarely higher.

Mean Period: 8 - 10 sec

The wave periods will occasionally reach 14 - 16 sec, but rarely longer.

Principle Direction, from: E

WindSea/Swell: 1% / 99%

## Winds

Mean Speed: 10 - 15 kts

The winds will occasionally reach 15 - 20 kts, but rarely greater.

Principle Direction, from: E

## Currents

Mean Speed: 0.50-0.75 kts

The currents will occasionally reach 2.25-2.50 kts, but rarely greater.

Principle Direction, to: N

## Weather Days

Current Speed > 1.0 knots Mean: 7.9 days Range: 0.2 - 15.5 days p50:8 days p75:1 days p90:1 days

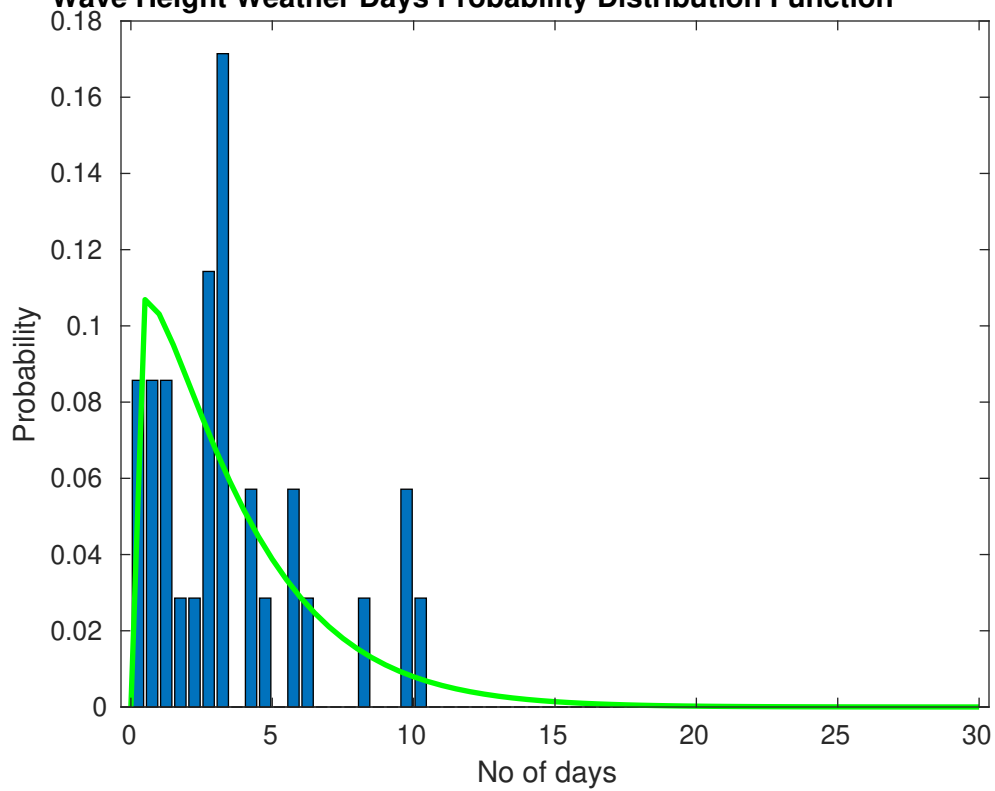
Current Speed > 1.5 knots Mean: 3.3 days Range: 0.0 - 7.6 days p50:2 days p75:1 days p90:1 days

Current Speed > 2.0 knots Mean: 0.9 days Range: 0.0 - 2.5 days p50:1 days p75:1 days p90:1 days

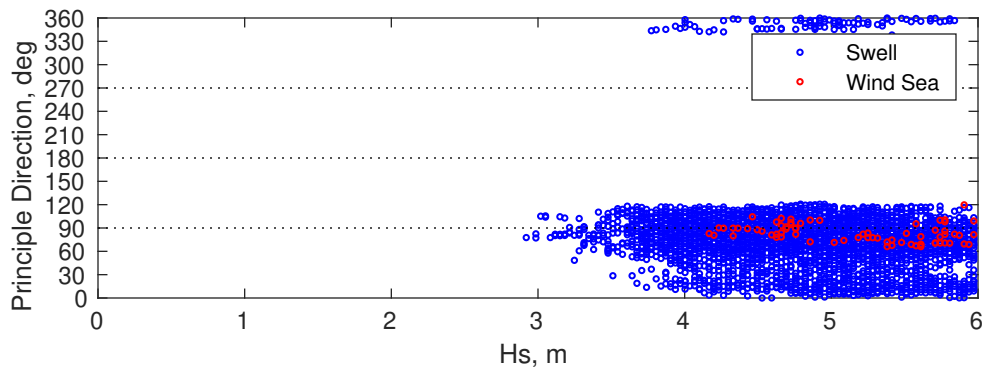
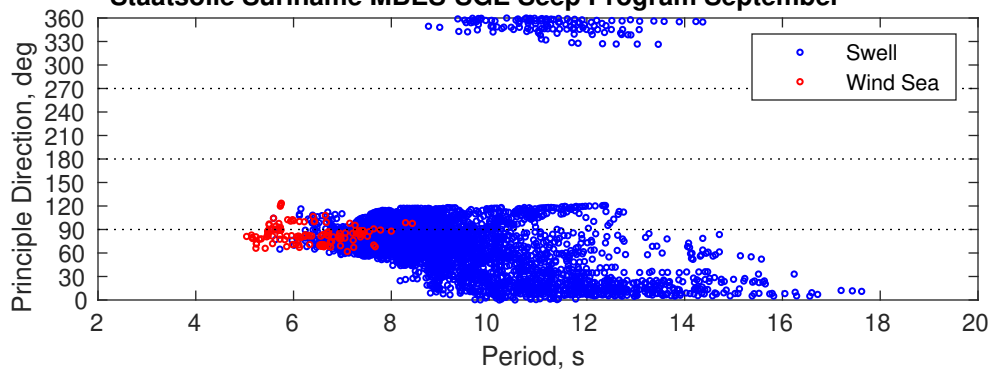
## Severe Storms

Severe storms with gale force winds and extreme waves are not expected during this month.

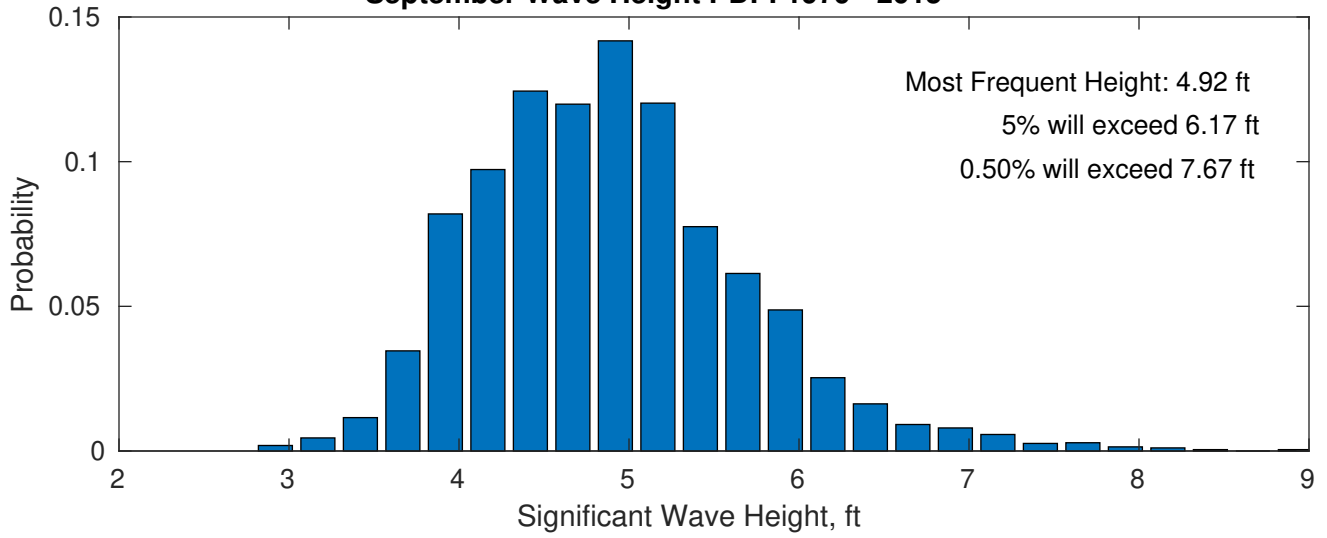
**Wave Height Weather Days Probability Distribution Function**



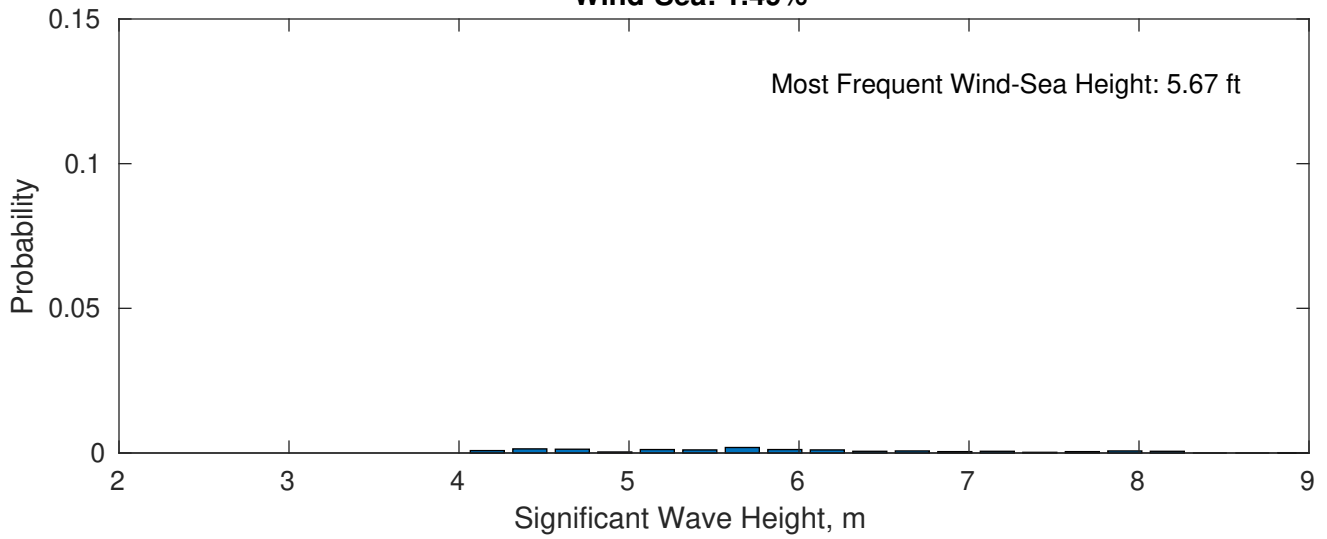
### Staatsolie Suriname MBES-SGE Seep Program September



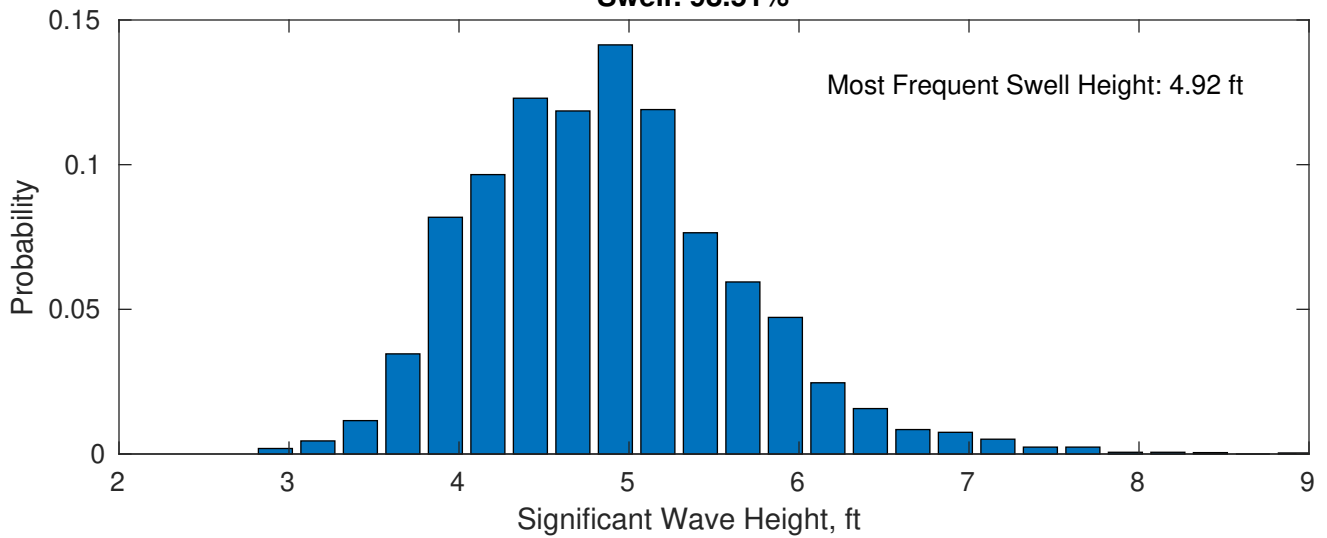
**September Wave Height PDF: 1979 - 2015**



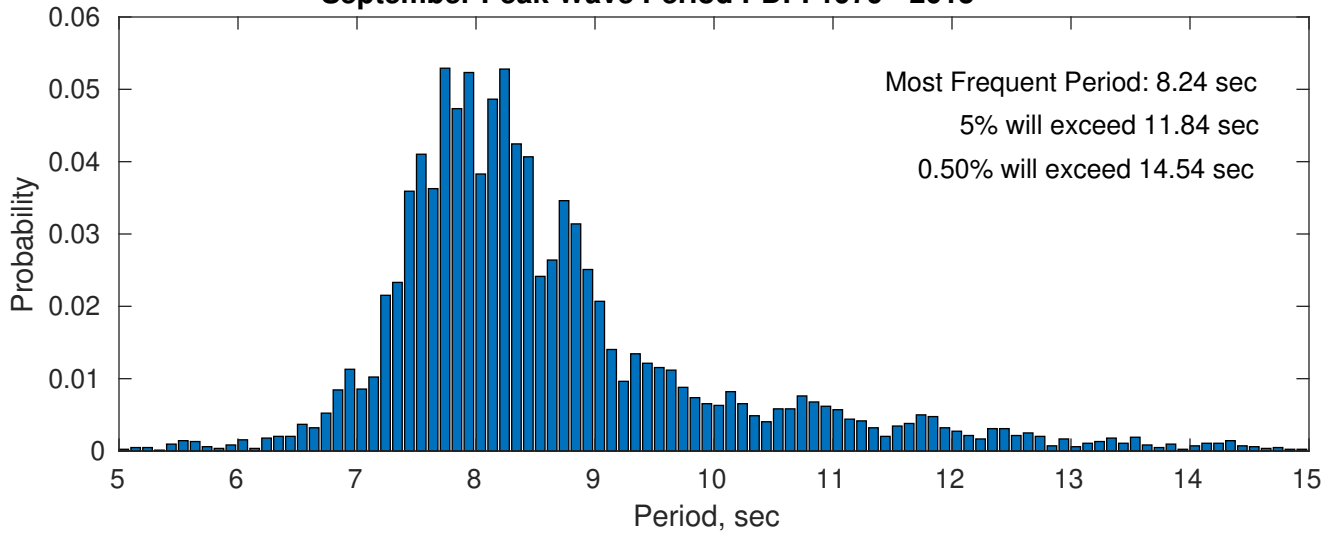
**Wind-Sea: 1.49%**



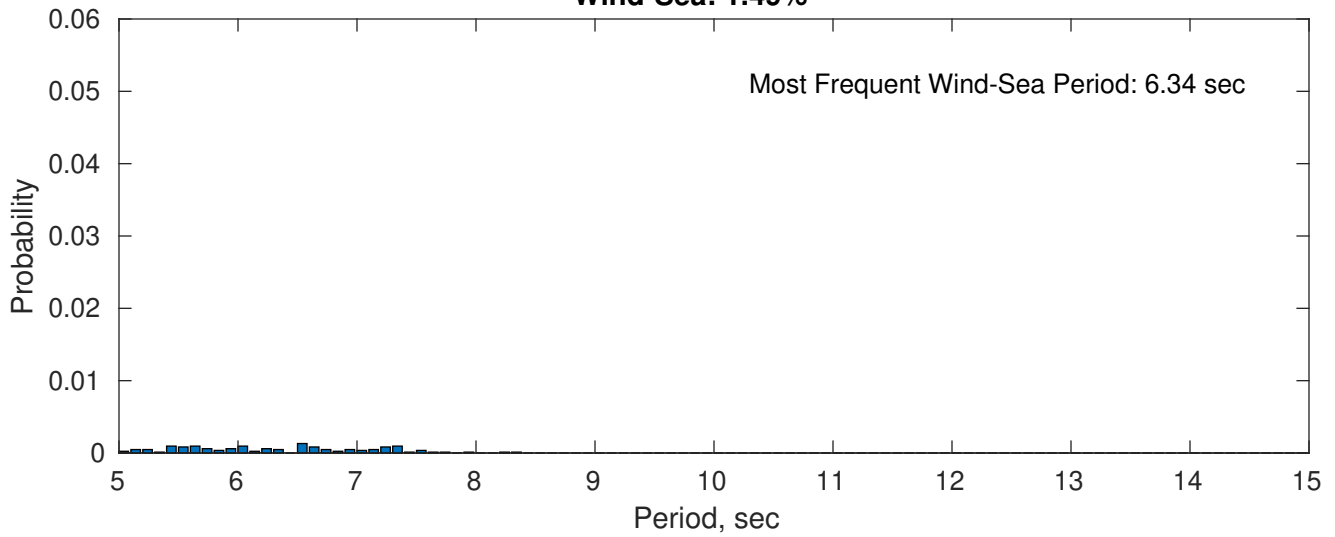
**Swell: 98.51%**



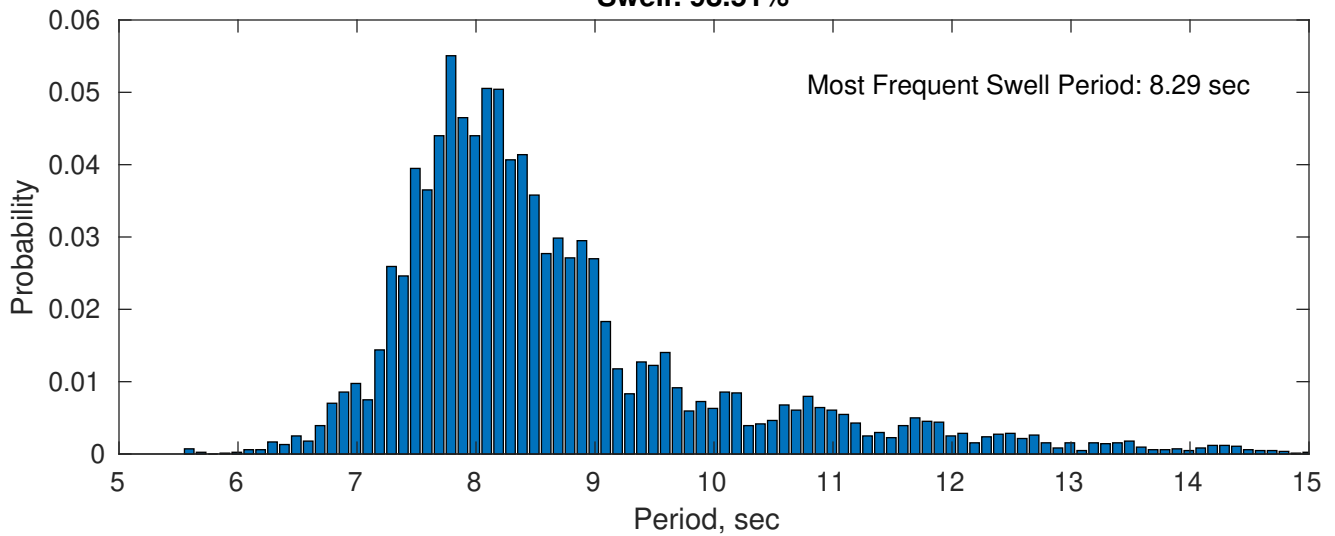
### September Peak Wave Period PDF: 1979 - 2015



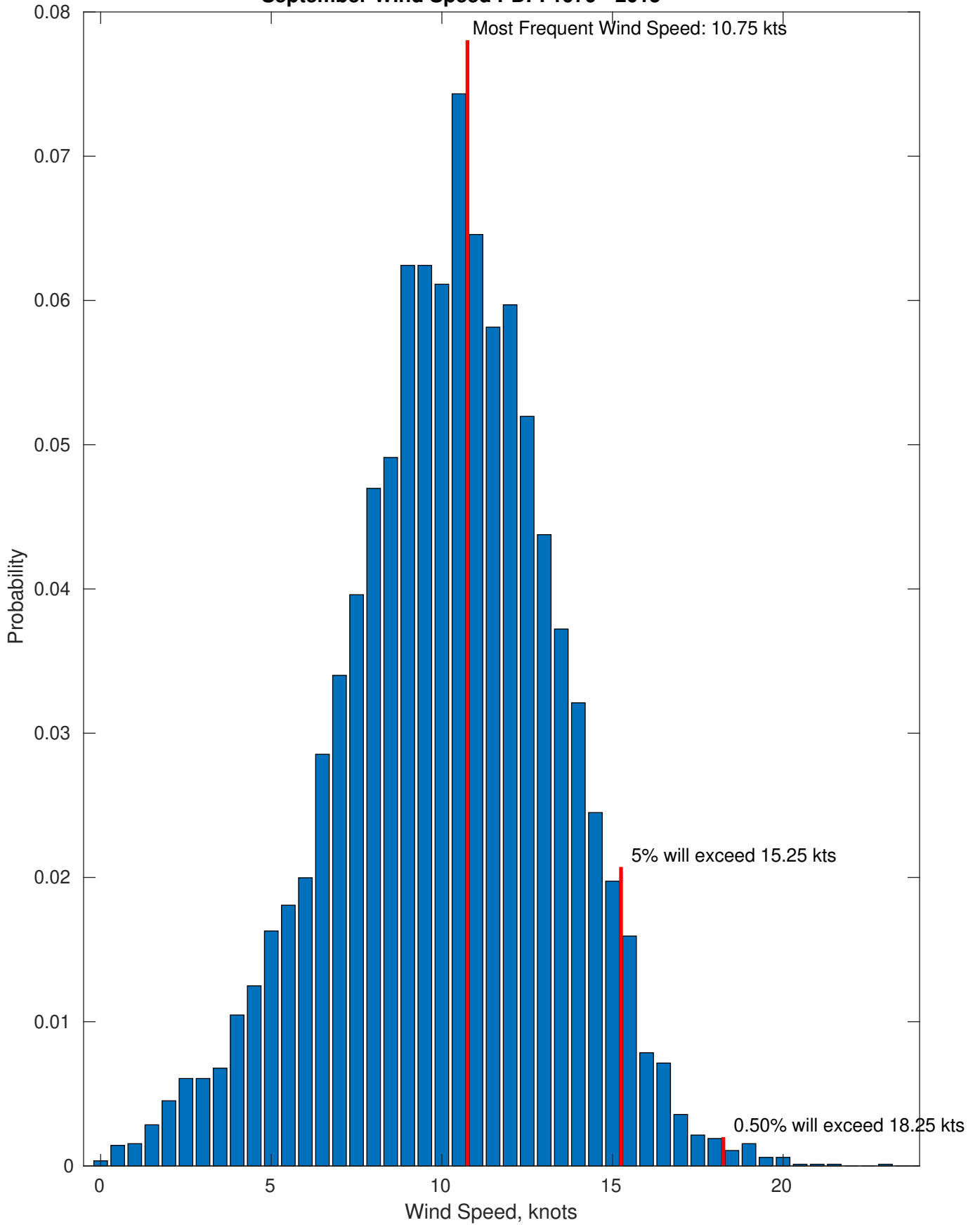
### Wind-Sea: 1.49%



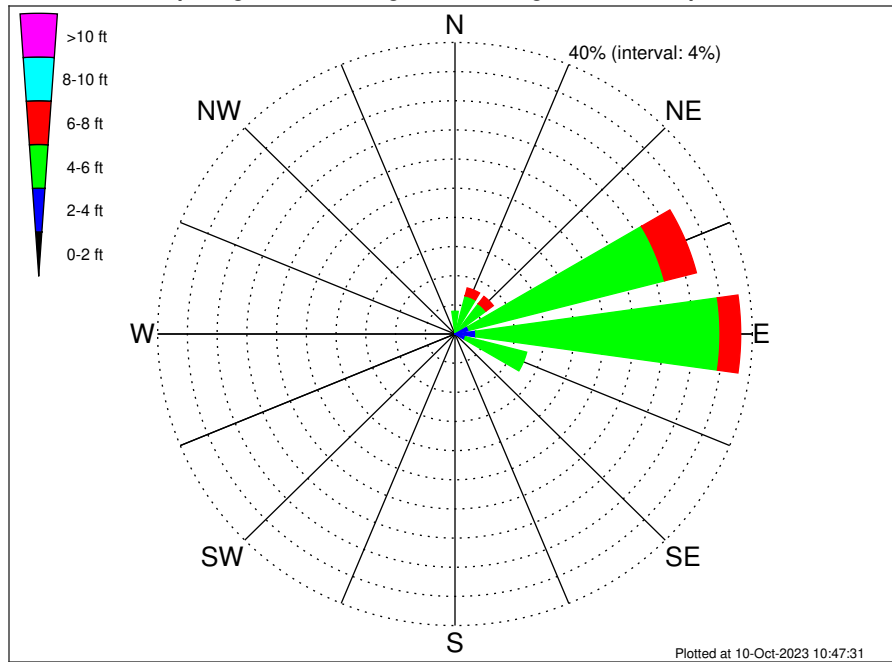
### Swell: 98.51%



### September Wind Speed PDF: 1979 - 2015



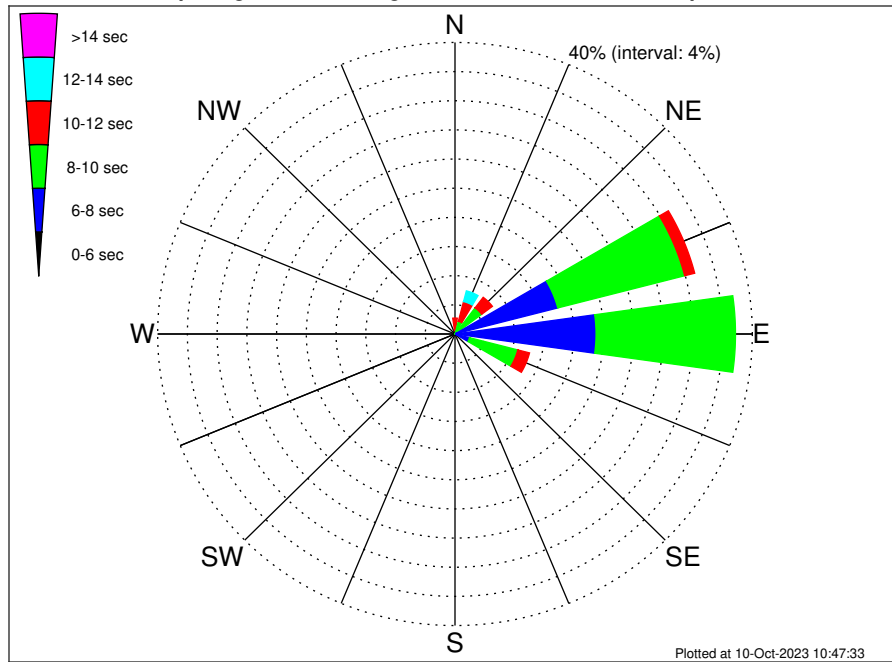
Staatsolie Suriname MBES-SGE Seep Program Climatological WaveHeight Rose for September: 1979 - 2015



Joint Frequency Distribution Table

	N	NNE	NE	ENE	E	ESE	SE	SSE	S	SSW	SW	WSW	W	WNW	NW	NNW	Total
calm	.	.	.	.	.	.	.	.	.	.	.	.	.	.	.	.	.
1 - 2 ft	.	.	.	.	.	.	.	.	.	.	.	.	.	.	.	.	.
2 - 4 ft	0.02	0.20	0.38	1.96	2.81	1.46	.	.	.	.	.	.	.	.	.	0.05	6.89
4 - 6 ft	3.10	5.22	4.83	27.15	32.85	8.50	.	.	.	.	.	.	.	.	.	0.39	82.04
6 - 8 ft	0.38	1.11	1.25	4.44	2.78	0.51	.	.	.	.	.	.	.	.	.	0.17	10.63
8 - 10 ft	.	.	0.12	0.11	0.15	.	.	.	.	.	.	.	.	.	.	.	0.38
10 - 12 ft	.	.	0.06	.	.	.	.	.	.	.	.	.	.	.	.	.	0.06
12 - 14 ft	.	.	.	.	.	.	.	.	.	.	.	.	.	.	.	.	.
14 - 16 ft	.	.	.	.	.	.	.	.	.	.	.	.	.	.	.	.	.
16 - 18 ft	.	.	.	.	.	.	.	.	.	.	.	.	.	.	.	.	.
> 18 ft	.	.	.	.	.	.	.	.	.	.	.	.	.	.	.	.	.
Total	3.51	6.53	6.64	33.65	38.59	10.48	.	.	.	.	.	.	.	.	.	0.61	100.00

Staatsolie Suriname MBES-SGE Seep Program Climatological WavePeriod Rose for September: 1979 - 2015

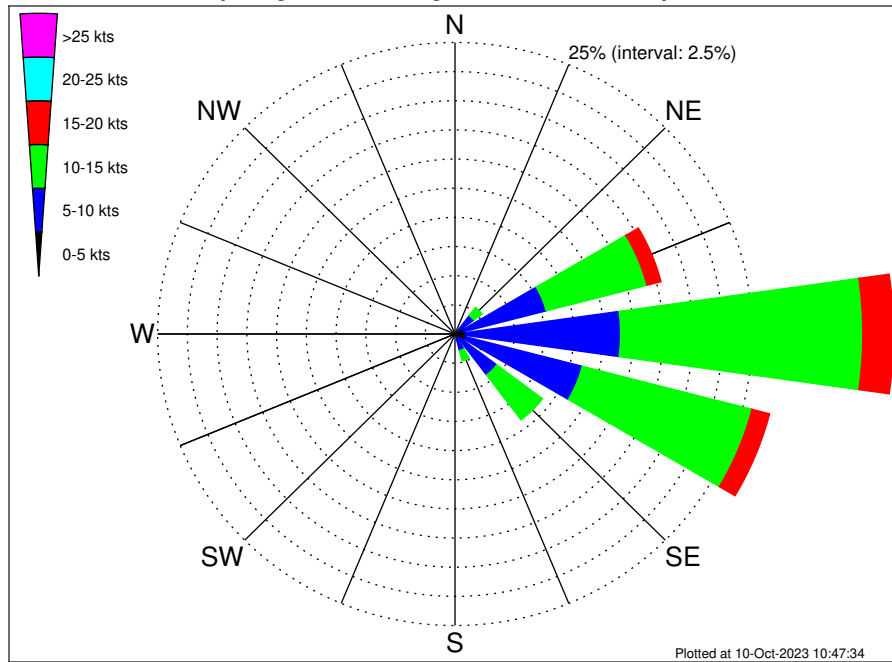


Joint Frequency Distribution Table

	N	NNE	NE	ENE	E	ESE	SE	SSE	S	SSW	SW	WSW	W	WNW	NW	NNW	Total
calm	.	.	.	.	.	.	.	.	.	.	.	.	.	.	.	.	.
1 - 2 sec	.	.	.	.	.	.	.	.	.	.	.	.	.	.	.	.	.
2 - 4 sec	.	.	.	.	.	.	.	.	.	.	.	.	.	.	.	.	.
4 - 6 sec	.	.	.	0.18	0.39	0.10	.	.	.	.	.	.	.	.	.	.	0.67
6 - 8 sec	.	.	0.24	14.10	18.59	1.93	.	.	.	.	.	.	.	.	.	.	34.86
8 - 10 sec	0.49	1.80	4.26	17.64	18.75	6.71	.	.	.	.	.	.	.	.	.	0.05	49.68
10 - 12 sec	1.70	2.81	1.81	1.39	0.74	1.63	.	.	.	.	.	.	.	.	.	0.38	10.45
12 - 14 sec	0.98	1.51	0.20	0.19	0.11	0.12	.	.	.	.	.	.	.	.	.	0.18	3.28
14 - 16 sec	0.26	0.38	0.13	0.15	0.01	.	.	.	.	.	.	.	.	.	.	.	0.94
18 - 20 sec	0.08	0.04	.	.	.	.	.	.	.	.	.	.	.	.	.	.	0.12
22 - 24 sec	.	.	.	.	.	.	.	.	.	.	.	.	.	.	.	.	.
Total	3.51	6.53	6.64	33.65	38.59	10.48	.	.	.	.	.	.	.	.	.	0.61	100.00



Staatsolie Suriname MBES-SGE Seep Program Climatological Wind Rose for September: 1979 - 2015



Joint Frequency Distribution Table

	N	NNE	NE	ENE	E	ESE	SE	SSE	S	SSW	SW	WSW	W	WNW	NW	NNW	Total
calm	0.01	•	0.01	0.01	0.04	0.01	•	0.02	0.02	0.01	•	0.02	•	•	•	0.01	0.18
0 - 5 kts	0.15	0.25	0.44	0.81	0.84	0.93	0.49	0.39	0.23	0.15	0.10	0.08	0.07	0.04	0.04	0.07	5.08
5 - 10 kts	0.04	0.29	1.53	7.10	13.05	10.12	3.91	1.06	0.38	0.10	0.05	0.05	0.02	0.01	0.02	0.02	37.75
10 - 15 kts	•	0.01	0.87	8.75	20.36	14.73	4.82	0.90	0.19	0.07	0.01	•	0.02	•	•	•	50.74
15 - 20 kts	•	•	0.14	1.22	2.58	1.53	0.56	0.07	0.02	0.01	•	•	•	•	•	•	6.15
20 - 25 kts	•	•	•	0.06	0.01	0.02	•	0.01	•	•	•	•	•	•	•	•	0.11
25 - 30 kts	•	•	•	•	•	•	•	•	•	•	•	•	•	•	•	•	•
30 - 35 kts	•	•	•	•	•	•	•	•	•	•	•	•	•	•	•	•	•
35 - 40 kts	•	•	•	•	•	•	•	•	•	•	•	•	•	•	•	•	•
40 - 45 kts	•	•	•	•	•	•	•	•	•	•	•	•	•	•	•	•	•
45 - 50 kts	•	•	•	•	•	•	•	•	•	•	•	•	•	•	•	•	•
Total	0.20	0.55	3.00	17.96	36.88	27.35	9.78	2.46	0.84	0.34	0.15	0.15	0.12	0.05	0.06	0.11	100.00