

Total Guyana Near-Shore Survey - April

Latitude: 7.59 N Longitude: 58.11 W

Weather Days

Wave Height > 4.0 ft Mean: 20.5 days Range: 8.8 - 30.0 days p50:29.5 days p75:24 days p90:2.5 days
Wave Height > 5.0 ft Mean: 13.9 days Range: 3.6 - 24.1 days p50:23.5 days p75:19.5 days p90:15 days
Wave Height > 6.0 ft Mean: 4.8 days Range: 0.0 - 10.5 days p50:9 days p75:4 days p90:3.5 days
Wind Speed > 15.0 knots Mean: 6.9 days Range: 3.1 - 10.6 days p50:6.5 days p75:4 days p90:3.5 days
Wind Speed > 20.0 knots Mean: 0.1 days Range: 0.0 - 0.4 days p50:0.5 days p75:0.5 days p90:0.5 days
Wind Speed > 25.0 knots Mean: 0.0 days Range: 0.0 - 0.0 days p50:0.5 days p75:0.5 days p90:0.5 days

Working Window

Wave Height < 4.0 ft	A 1 day or longer window will statistically occur 0.9 times per month A 2 day or longer window will statistically occur 0.6 times per month A 3 day or longer window will statistically occur 0.5 times per month
Wave Height < 5.0 ft	A 1 day or longer window will statistically occur 2.1 times per month A 2 day or longer window will statistically occur 1.4 times per month A 3 day or longer window will statistically occur 1.0 times per month
Wave Height < 6.0 ft	A 1 day or longer window will statistically occur 3.0 times per month A 2 day or longer window will statistically occur 2.5 times per month A 3 day or longer window will statistically occur 2.1 times per month

Waves

Mean Height: 4 - 6 ft
The wave heights will occasionally reach 8 - 10 ft, but rarely higher.
Mean Period: 6 - 8 sec
The wave periods will occasionally reach 14 - 16 sec, but rarely longer.
Principle Direction, from: ENE
WindSea/Swell: 79% / 21%

Winds

Mean Speed: 10 - 15 kts
The winds will occasionally reach 15 - 20 kts, but rarely greater.
Principle Direction, from: ENE

Currents

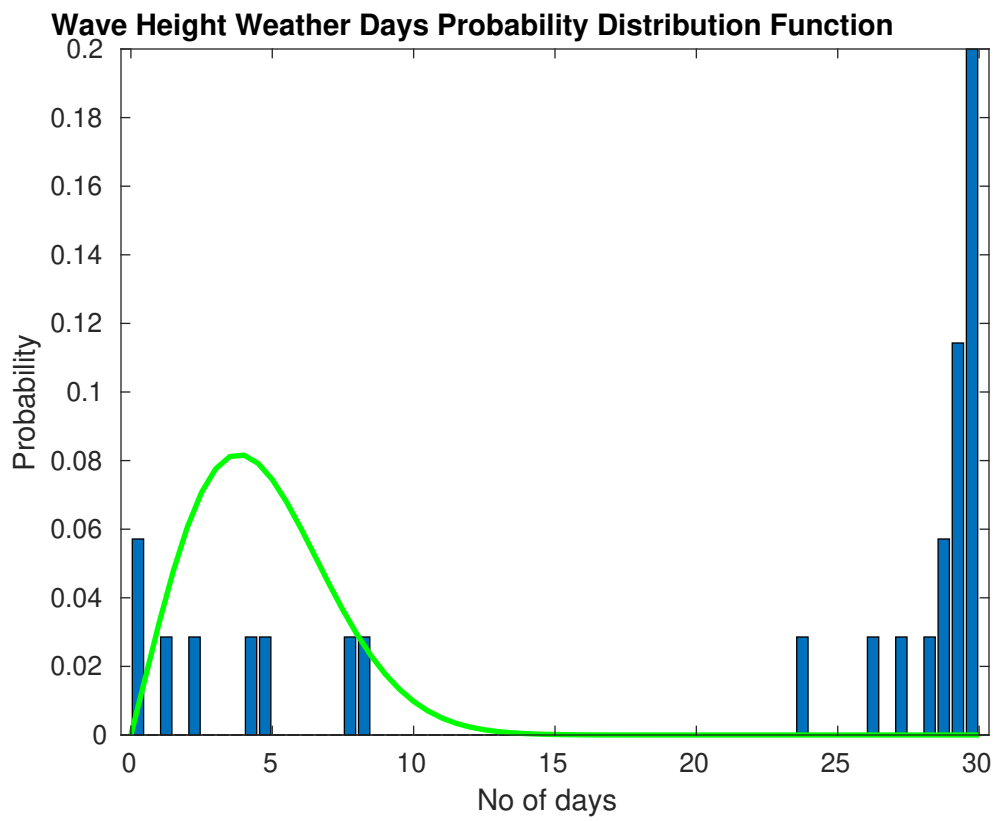
Mean Speed: 0.50-0.75 kts
The currents will occasionally reach 0.75-1.00 kts, but rarely greater.
Principle Direction, to: NW

Weather Days

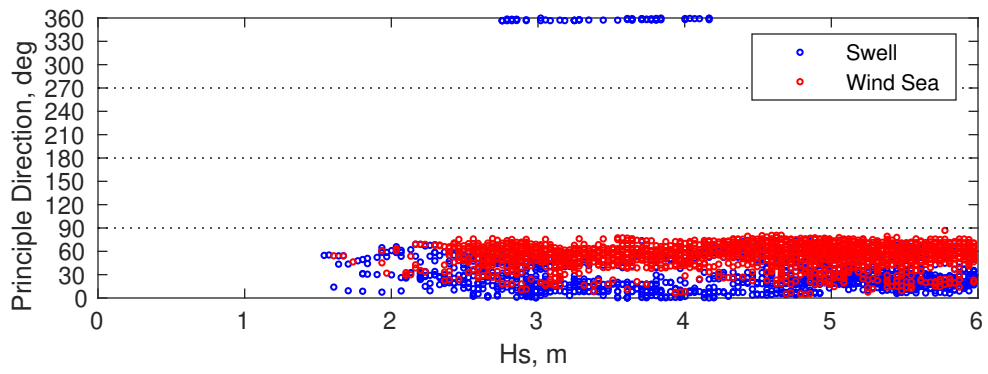
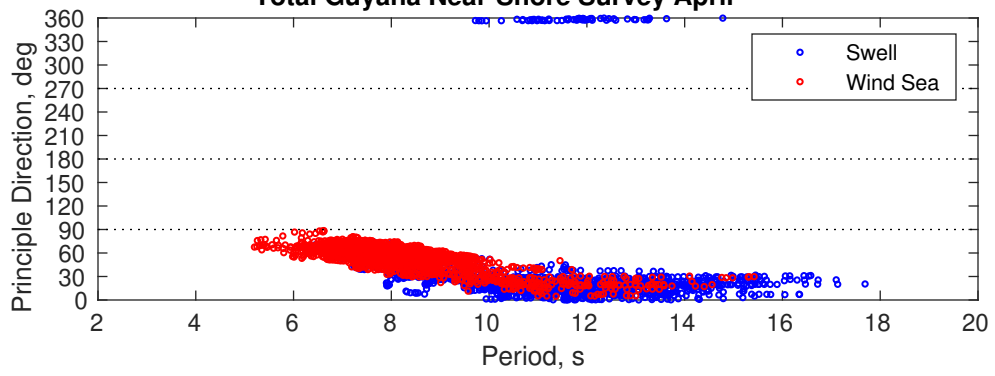
Current Speed > 0.5 knots Mean: 18.3 days Range: 13.0 - 23.7 days p50:21 days p75:13 days p90:10 days
Current Speed > 1.0 knots Mean: 0.0 days Range: 0.0 - 0.0 days p50:1 days p75:1 days p90:1 days
Current Speed > 1.5 knots Mean: 0.0 days Range: 0.0 - 0.0 days p50:1 days p75:1 days p90:1 days

Severe Storms

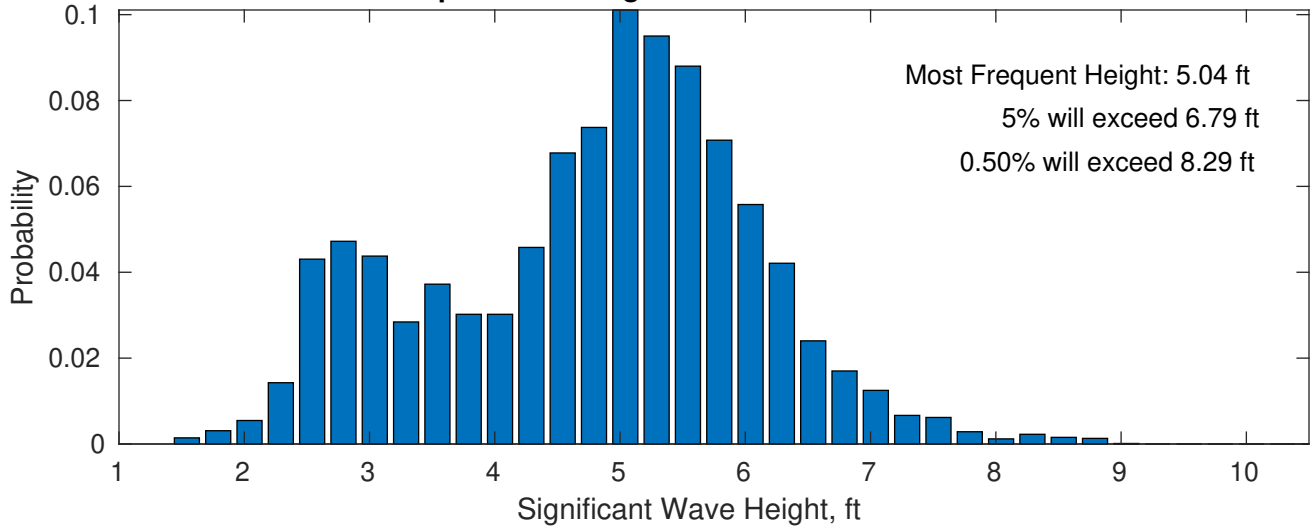
Severe storms with gale force winds and extreme waves are not expected during this month.



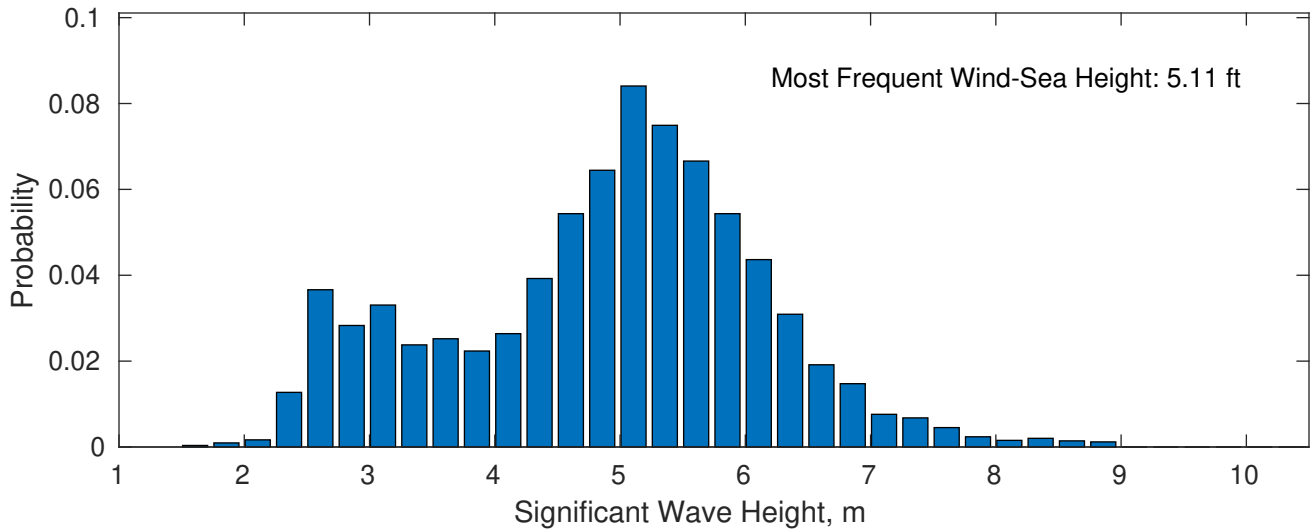
Total Guyana Near-Shore Survey April



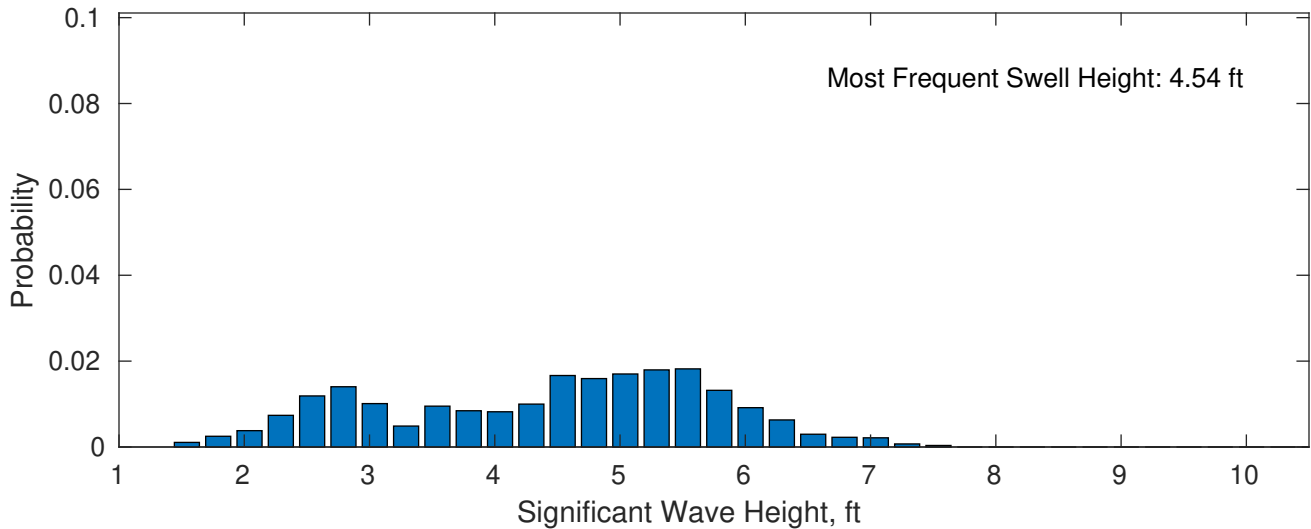
April Wave Height PDF: 1979 - 2015



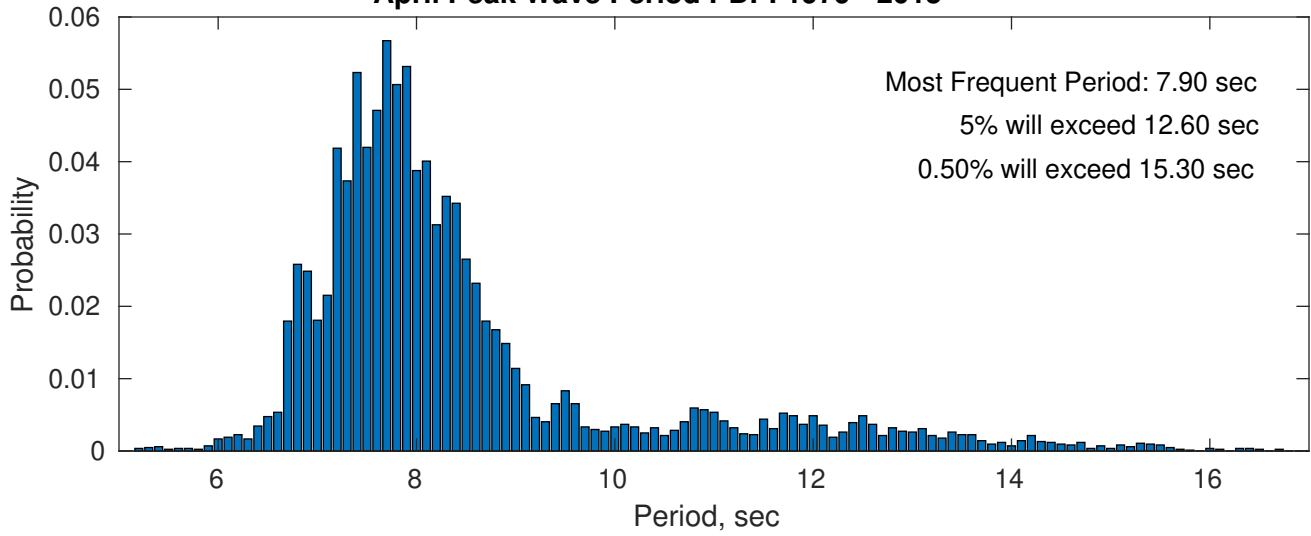
Wind-Sea: 78.53%



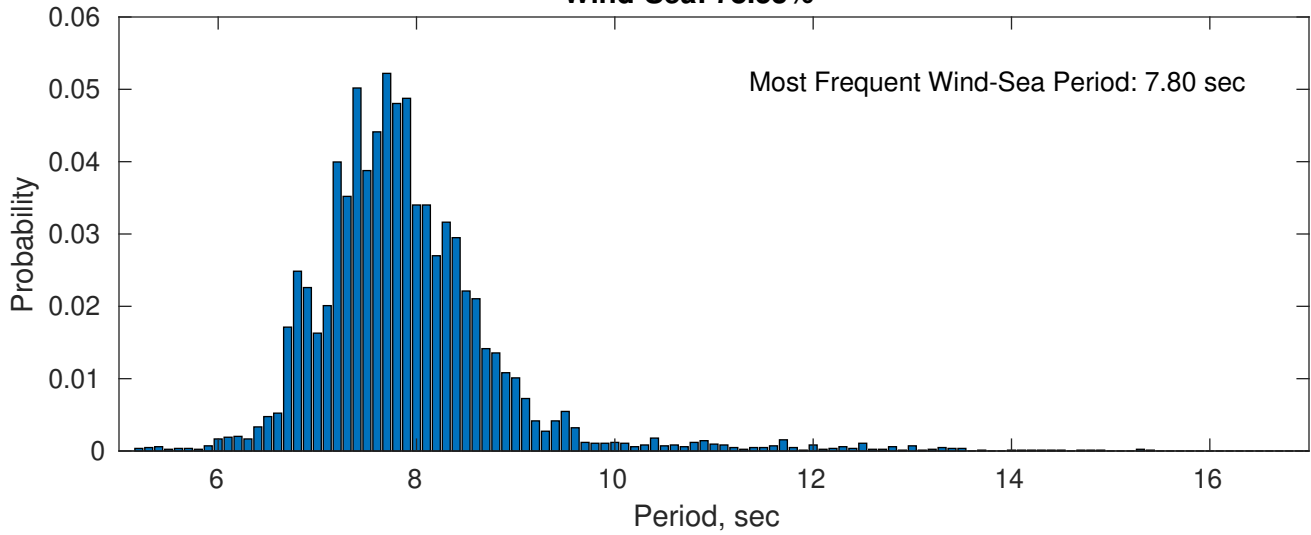
Swell: 21.47%



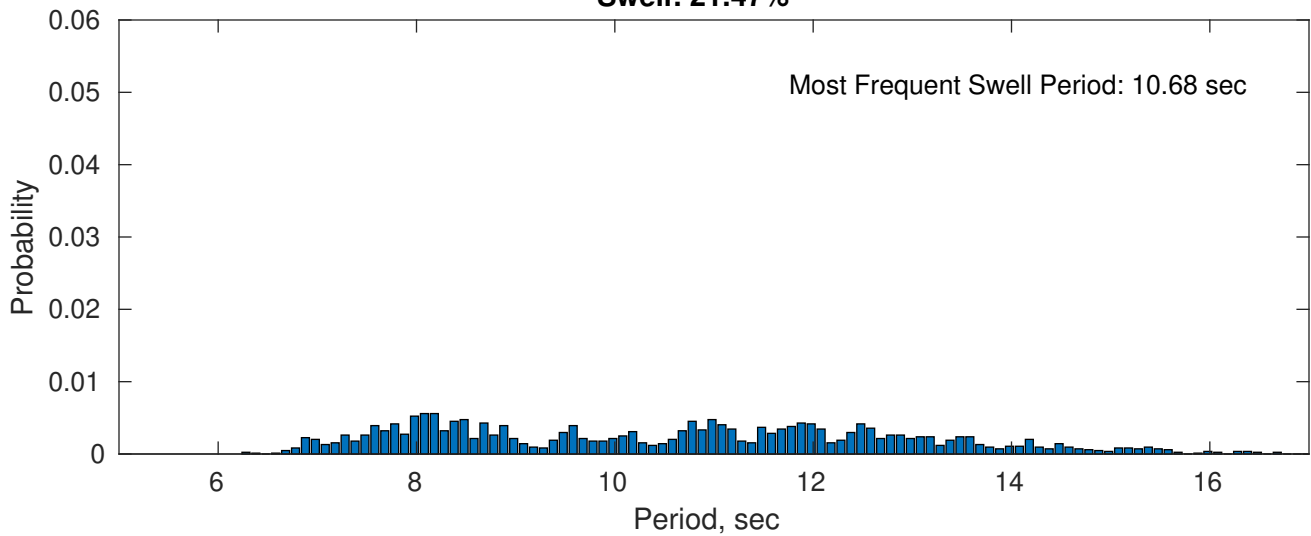
April Peak Wave Period PDF: 1979 - 2015



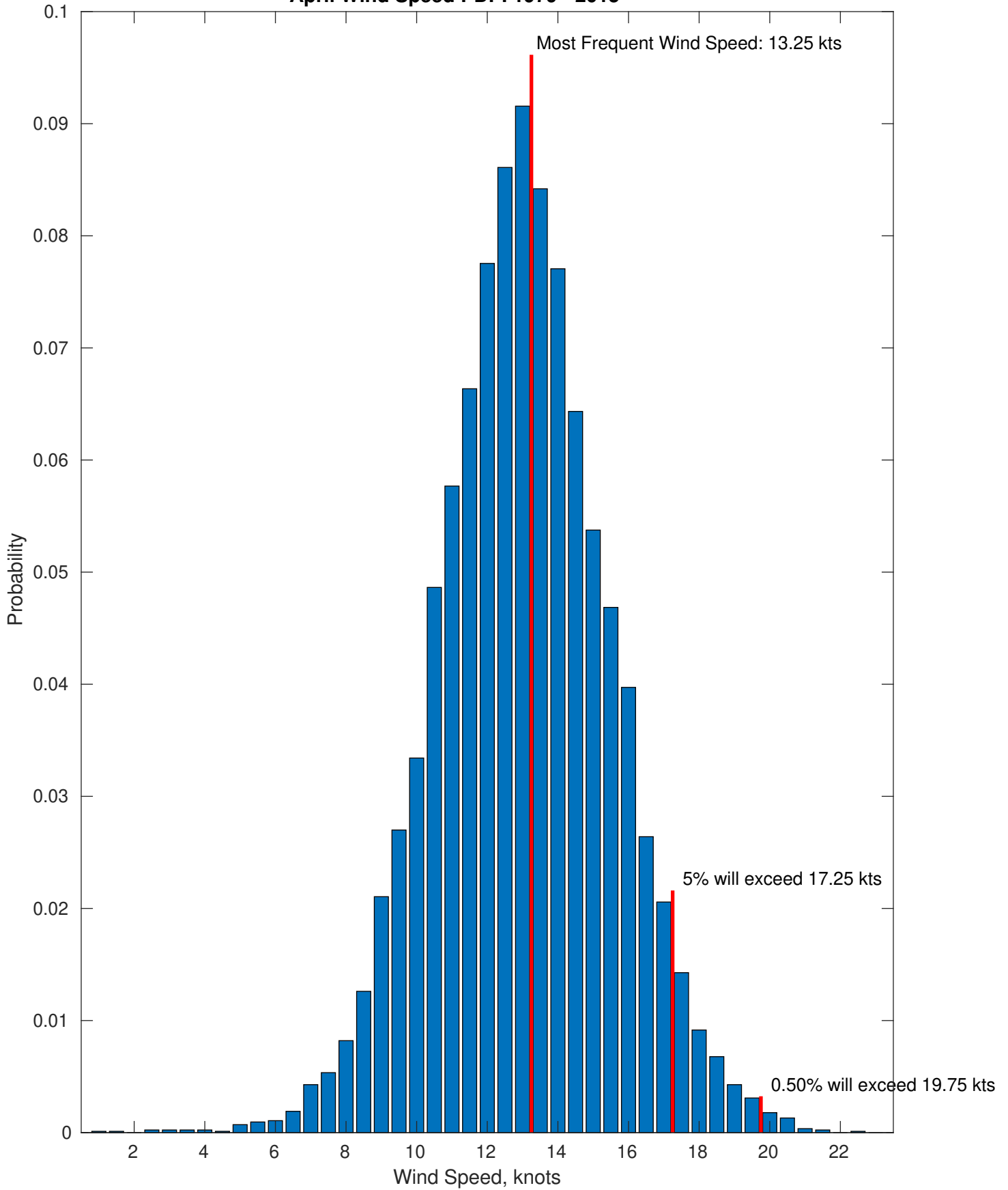
Wind-Sea: 78.53%



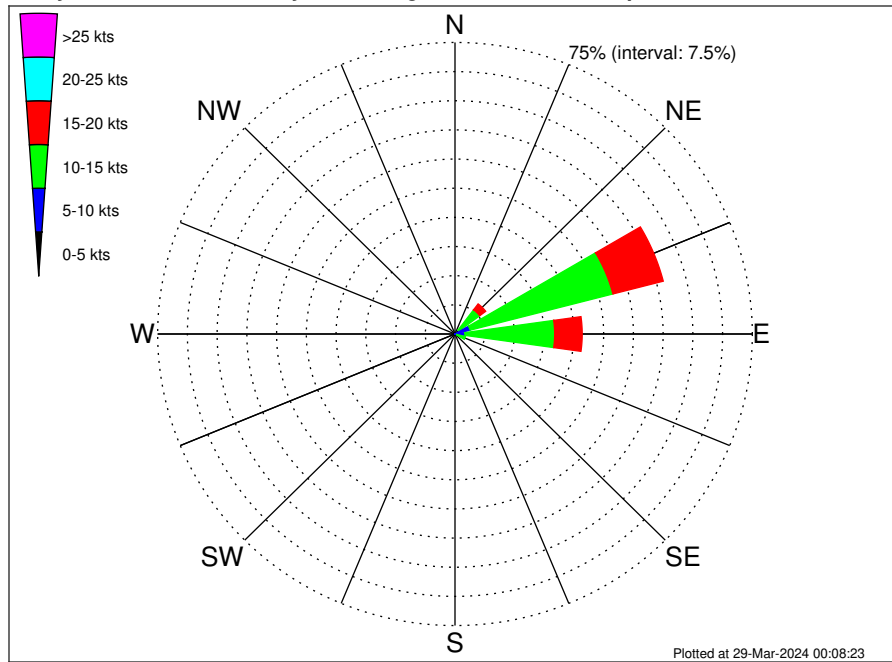
Swell: 21.47%



April Wind Speed PDF: 1979 - 2015



Total Guyana Near-Shore Survey Climatological Wind Rose for April: 1979 - 2015



Joint Frequency Distribution Table

	N	NNE	NE	ENE	E	ESE	SE	SSE	S	SSW	SW	WSW	W	WNW	NW	NNW	Total
calm	•	•	•	•	•	•	•	•	•	•	•	•	•	•	•	•	•
0 - 5 kts	•	•	0.02	0.04	0.02	0.02	•	•	•	•	0.01	•	0.01	•	•	•	0.13
5 - 10 kts	0.01	0.06	1.30	3.91	2.50	0.49	0.05	•	•	•	•	•	•	•	•	•	8.31
10 - 15 kts	0.02	0.12	6.48	37.20	22.62	2.20	0.05	•	•	•	•	•	•	•	•	•	68.69
15 - 20 kts	•	•	1.89	13.12	6.94	0.52	0.01	•	•	•	•	•	•	•	•	•	22.49
20 - 25 kts	•	•	•	0.36	0.02	•	•	•	•	•	•	•	•	•	•	•	0.38
25 - 30 kts	•	•	•	•	•	•	•	•	•	•	•	•	•	•	•	•	•
30 - 35 kts	•	•	•	•	•	•	•	•	•	•	•	•	•	•	•	•	•
35 - 40 kts	•	•	•	•	•	•	•	•	•	•	•	•	•	•	•	•	•
40 - 45 kts	•	•	•	•	•	•	•	•	•	•	•	•	•	•	•	•	•
45 - 50 kts	•	•	•	•	•	•	•	•	•	•	•	•	•	•	•	•	•
Total	0.04	0.18	9.69	54.62	32.11	3.23	0.11	•	•	•	0.01	•	0.01	•	•	•	100.00