

Total Guyana Near-Shore Survey - August

Latitude: 7.59 N Longitude: 58.11 W

Weather Days

Wave Height > 4.0 ft Mean: 7.5 days Range: 0.8 - 14.1 days p50:14 days p75:8 days p90:5.5 days
Wave Height > 5.0 ft Mean: 1.3 days Range: 0.0 - 2.7 days p50:2.5 days p75:1.5 days p90:0.5 days
Wave Height > 6.0 ft Mean: 0.1 days Range: 0.0 - 0.3 days p50:30 days p75:30 days p90:0.5 days
Wind Speed > 15.0 knots Mean: 2.5 days Range: 1.1 - 4.0 days p50:2.5 days p75:1.5 days p90:1 days
Wind Speed > 20.0 knots Mean: 0.0 days Range: 0.0 - 0.1 days p50:0.5 days p75:0.5 days p90:0.5 days
Wind Speed > 25.0 knots Mean: 0.0 days Range: 0.0 - 0.0 days p50:0.5 days p75:0.5 days p90:0.5 days

Working Window

Wave Height < 4.0 ft	A 1 day or longer window will statistically occur 3.9 times per month A 2 day or longer window will statistically occur 2.7 times per month A 3 day or longer window will statistically occur 1.7 times per month
Wave Height < 5.0 ft	A 1 day or longer window will statistically occur 2.7 times per month A 2 day or longer window will statistically occur 2.4 times per month A 3 day or longer window will statistically occur 2.0 times per month
Wave Height < 6.0 ft	A 1 day or longer window will statistically occur 1.2 times per month A 2 day or longer window will statistically occur 1.2 times per month A 3 day or longer window will statistically occur 1.2 times per month

Waves

Mean Height: 2 - 4 ft
The wave heights will occasionally reach 4 - 6 ft, but rarely higher.
Mean Period: 6 - 8 sec
The wave periods will occasionally reach 12 - 14 sec, but rarely longer.
Principle Direction, from: NE
WindSea/Swell: 36% / 64%

Winds

Mean Speed: 10 - 15 kts
The winds will occasionally reach 15 - 20 kts, but rarely greater.
Principle Direction, from: E

Currents

Mean Speed: 0.25-0.50 kts
The currents will occasionally reach 0.75-1.00 kts, but rarely greater.
Principle Direction, to: NNW

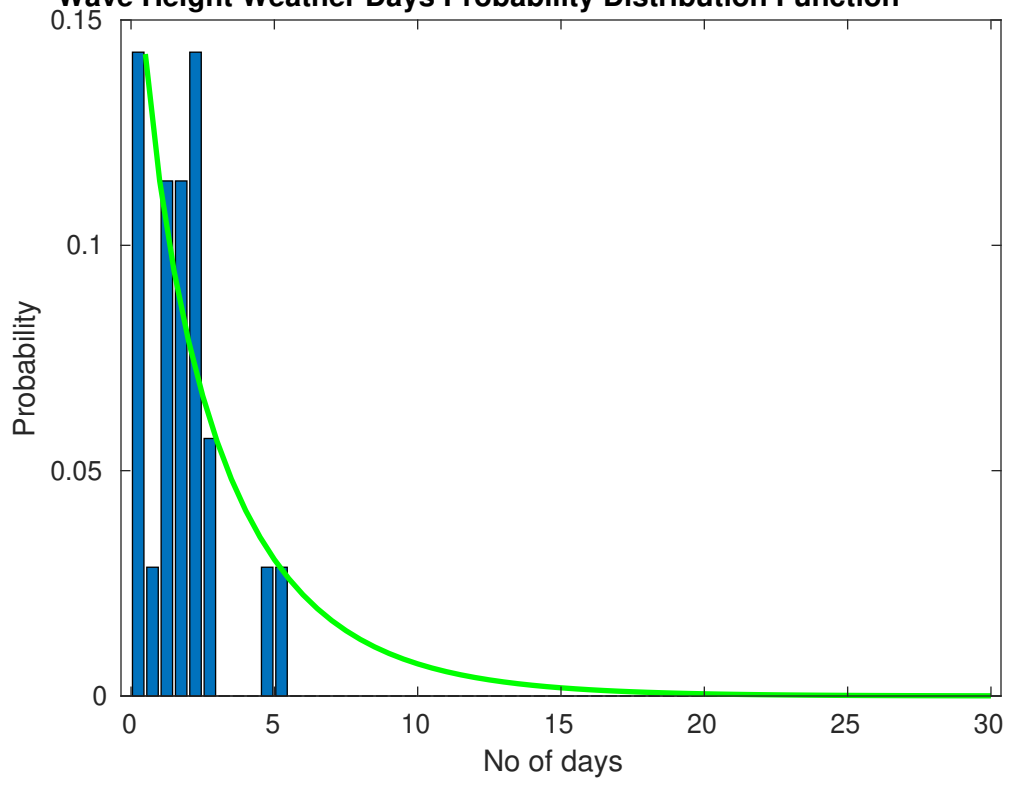
Weather Days

Current Speed > 0.5 knots Mean: 12.4 days Range: 6.3 - 18.4 days p50:13 days p75:8 days p90:4 days
Current Speed > 1.0 knots Mean: 0.0 days Range: 0.0 - 0.0 days p50:1 days p75:1 days p90:1 days
Current Speed > 1.5 knots Mean: 0.0 days Range: 0.0 - 0.0 days p50:1 days p75:1 days p90:1 days

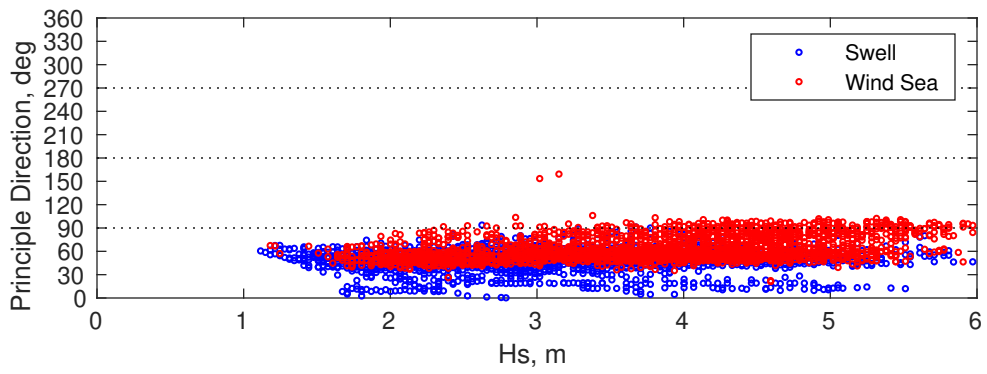
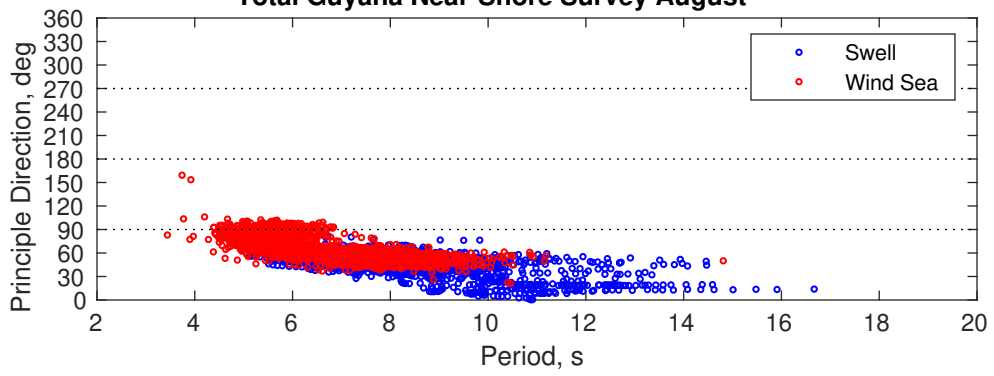
Severe Storms

Severe storms with gale force winds and extreme waves are not expected during this month.

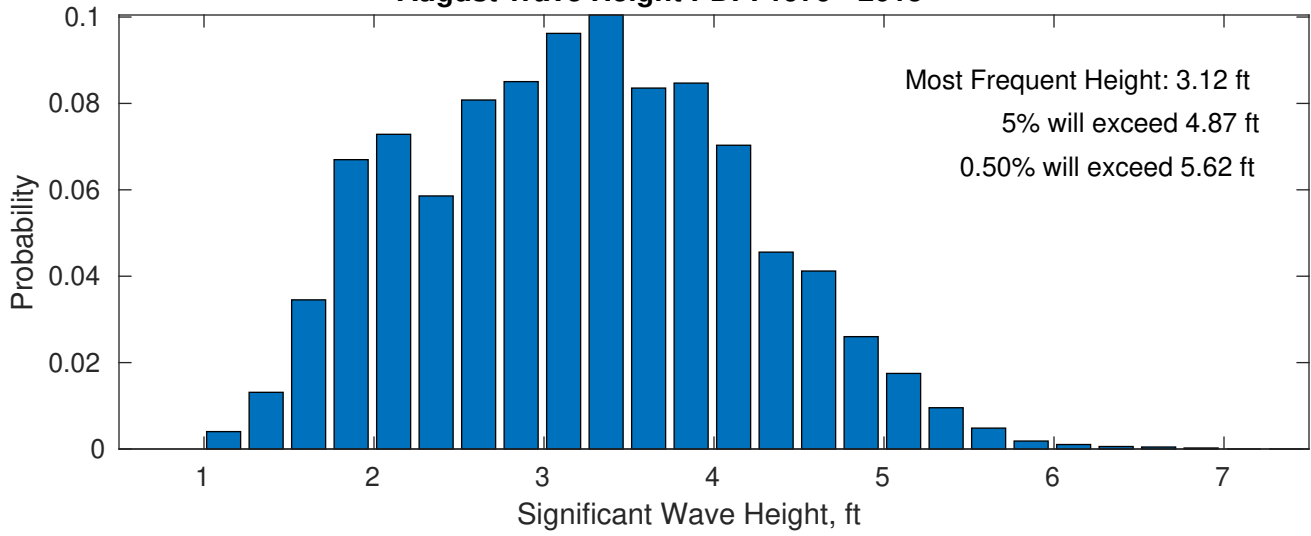
Wave Height Weather Days Probability Distribution Function



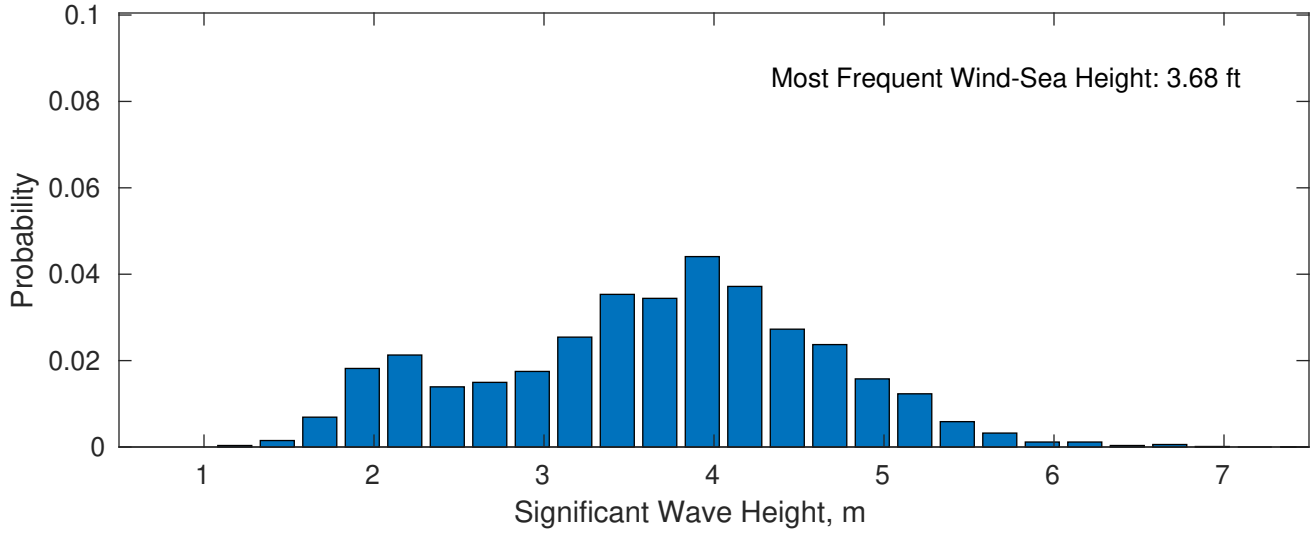
Total Guyana Near-Shore Survey August



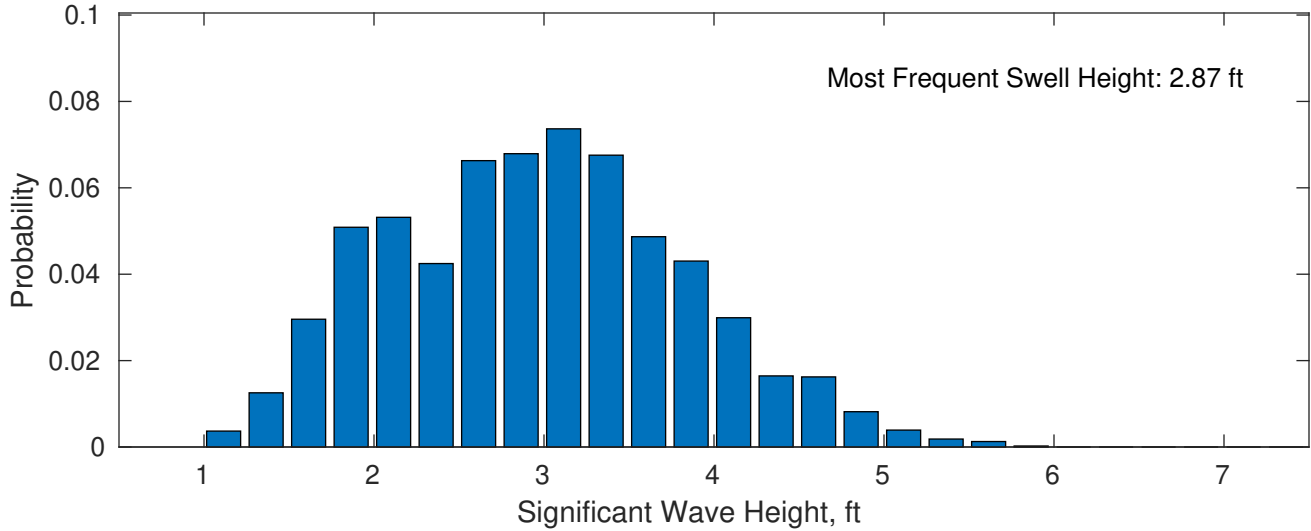
August Wave Height PDF: 1979 - 2015



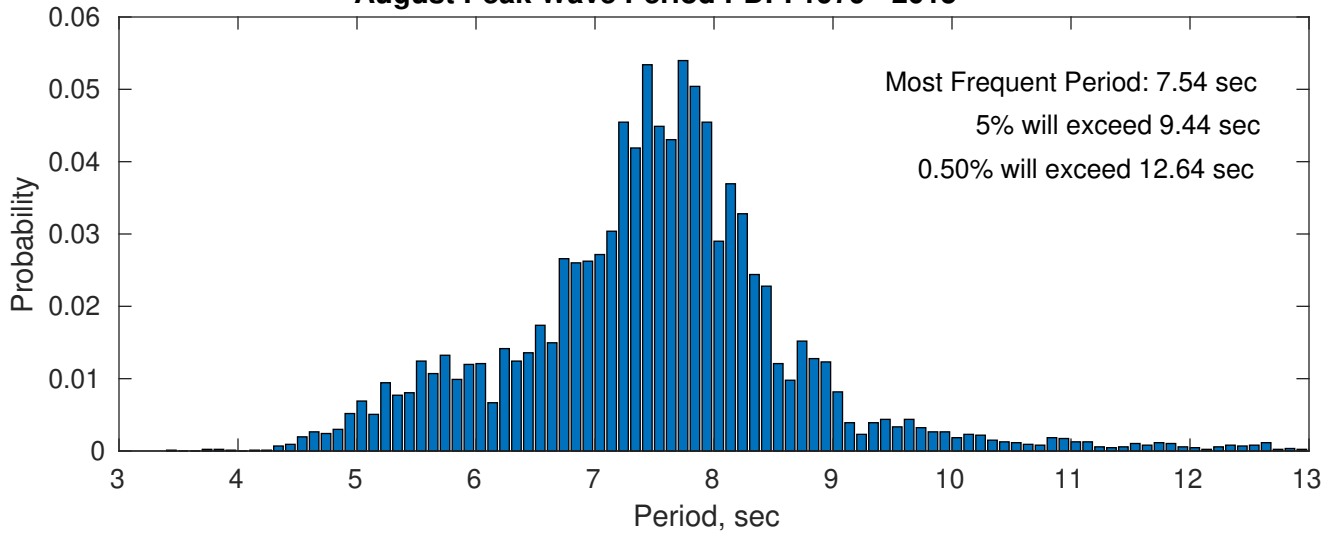
Wind-Sea: 36.25%



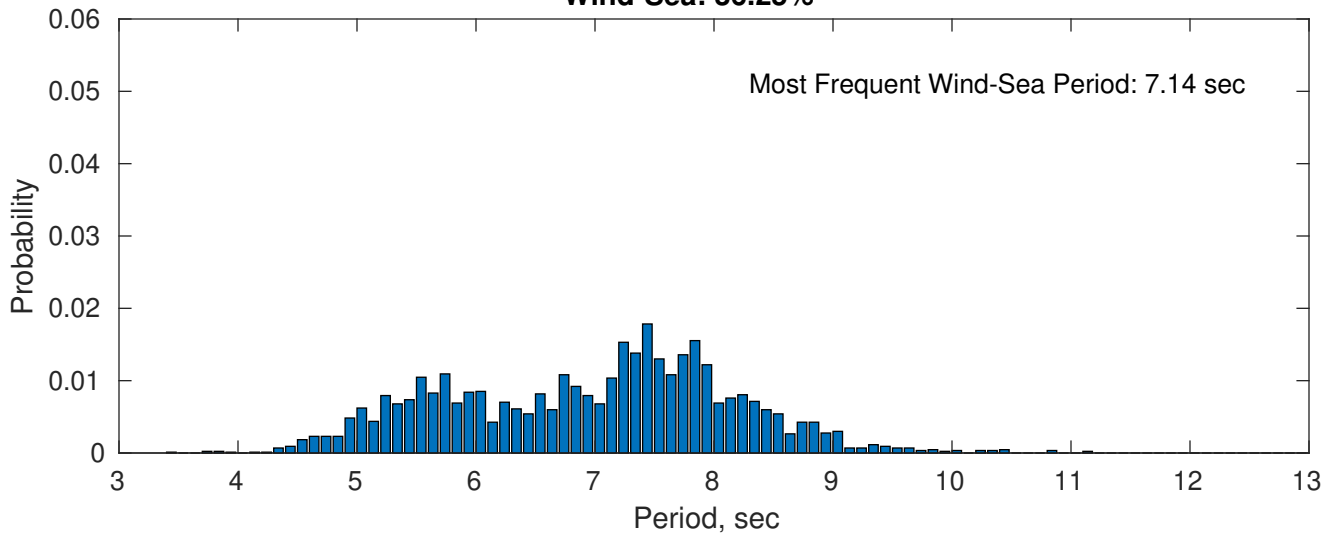
Swell: 63.75%



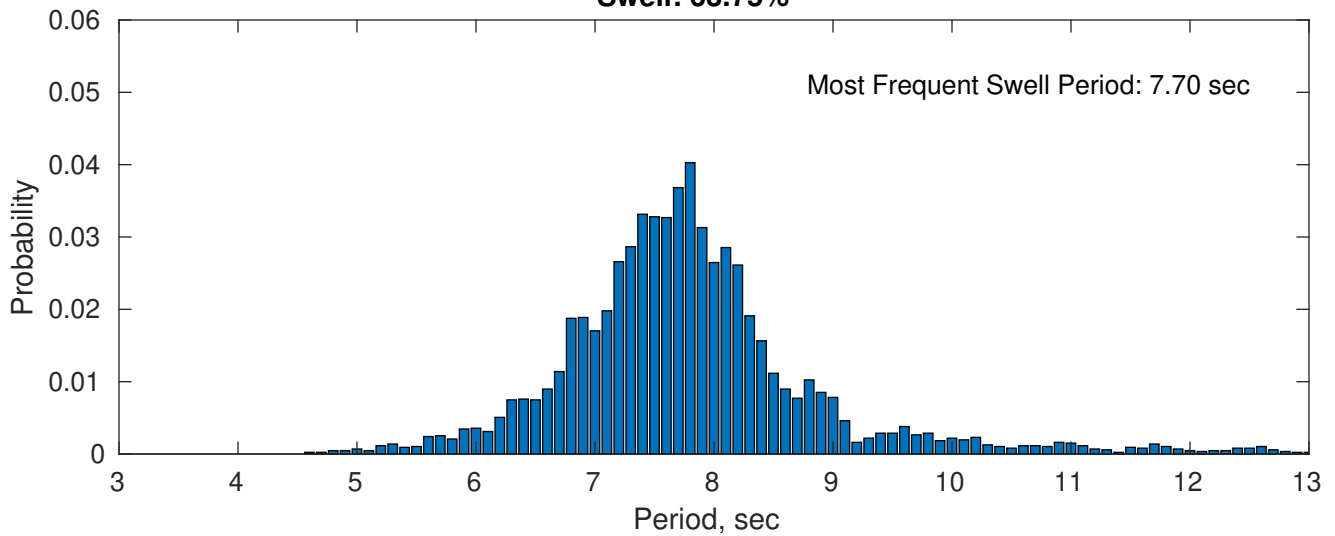
August Peak Wave Period PDF: 1979 - 2015



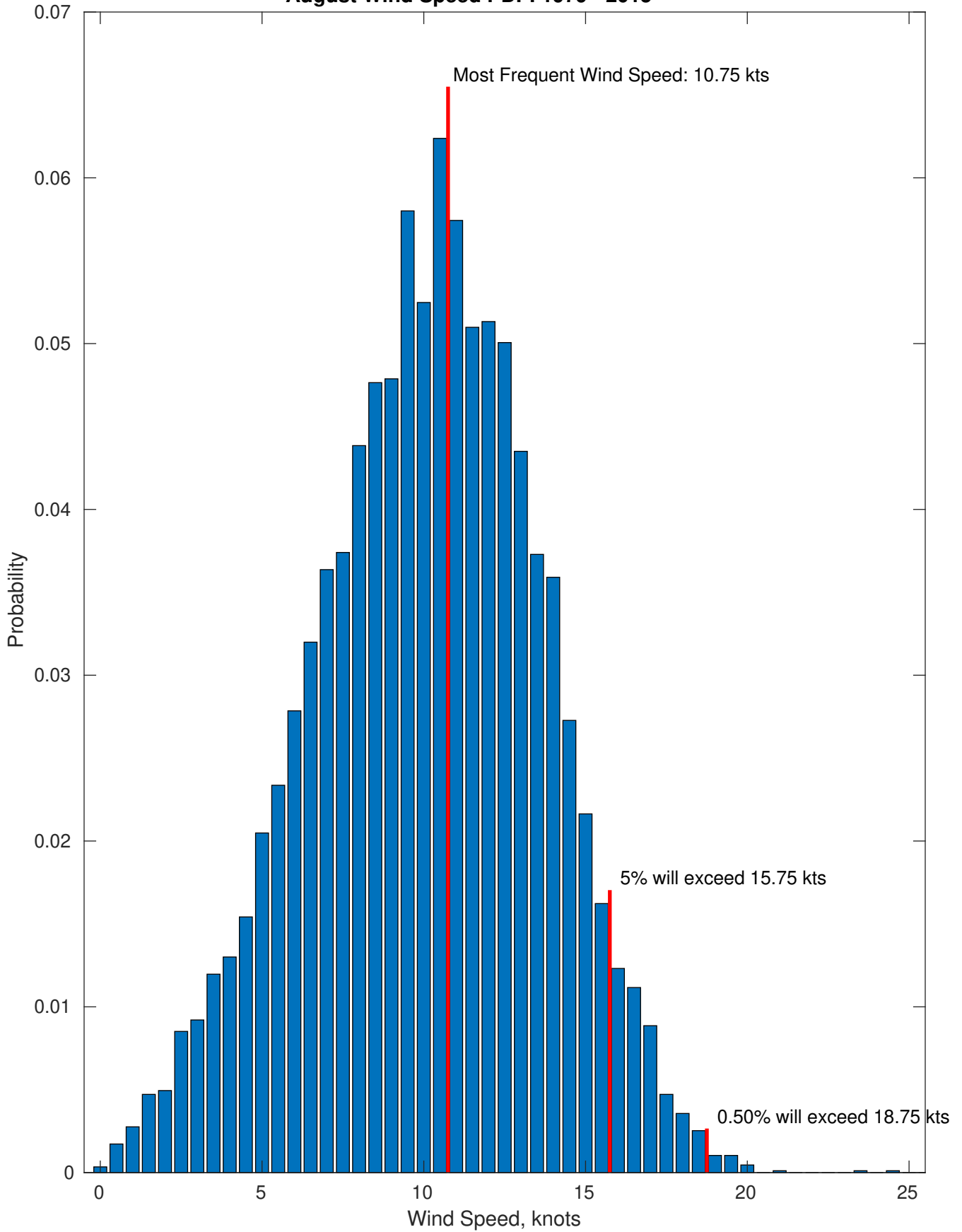
Wind-Sea: 36.25%



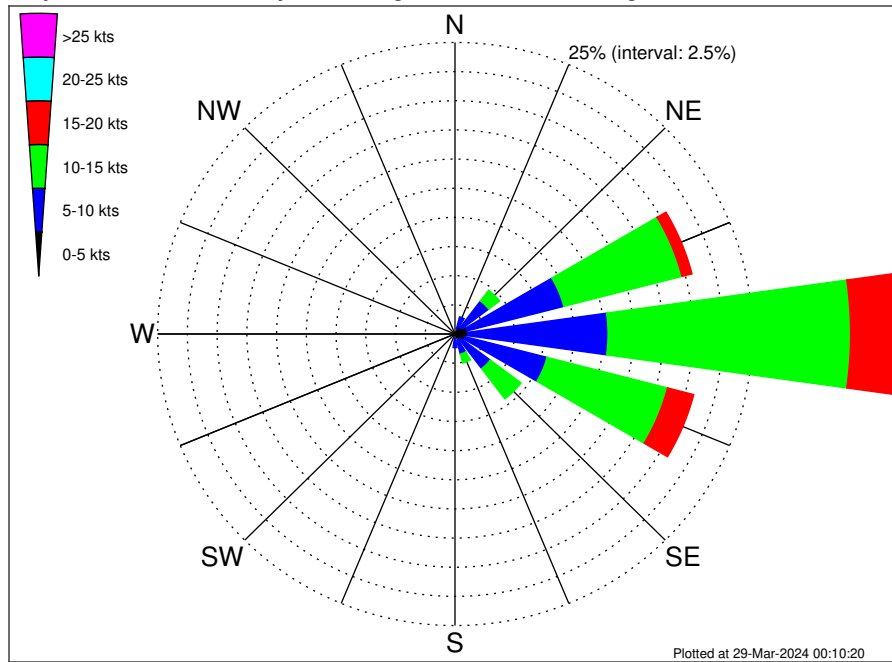
Swell: 63.75%



August Wind Speed PDF: 1979 - 2015



Total Guyana Near-Shore Survey Climatological Wind Rose for August: 1979 - 2015



Joint Frequency Distribution Table

	N	NNE	NE	ENE	E	ESE	SE	SSE	S	SSW	SW	WSW	W	WNW	NW	NNW	Total
calm	•	•	0.03	•	0.01	0.01	•	0.03	0.01	0.02	0.02	•	0.02	0.01	0.01	0.01	0.21
0 - 5 kts	0.25	0.48	0.64	1.05	1.06	0.87	0.63	0.56	0.37	0.22	0.13	0.20	0.14	0.16	0.08	0.21	7.05
5 - 10 kts	0.26	1.04	2.87	8.40	11.80	7.10	3.08	1.19	0.79	0.40	0.21	0.02	0.09	0.05	0.06	0.13	37.48
10 - 15 kts	0.03	0.14	1.15	10.27	20.39	10.47	3.25	0.79	0.24	0.10	0.02	•	•	•	•	•	46.86
15 - 20 kts	•	•	0.03	0.87	4.43	2.28	0.52	0.13	0.05	•	•	•	•	•	•	•	8.31
20 - 25 kts	•	•	•	•	0.06	0.01	0.01	•	•	•	•	•	•	•	•	•	0.08
25 - 30 kts	•	•	•	•	•	•	•	•	•	•	•	•	•	•	•	•	•
30 - 35 kts	•	•	•	•	•	•	•	•	•	•	•	•	•	•	•	•	•
35 - 40 kts	•	•	•	•	•	•	•	•	•	•	•	•	•	•	•	•	•
40 - 45 kts	•	•	•	•	•	•	•	•	•	•	•	•	•	•	•	•	•
45 - 50 kts	•	•	•	•	•	•	•	•	•	•	•	•	•	•	•	•	•
Total	0.55	1.66	4.73	20.59	37.75	20.75	7.49	2.70	1.46	0.75	0.38	0.22	0.25	0.22	0.15	0.35	100.00