

Total Guyana Near-Shore Survey - February

Latitude: 7.59 N Longitude: 58.11 W

Weather Days

Wave Height > 4.0 ft Mean: 22.6 days Range: 13.8 - 30.0 days p50:29.5 days p75:20.5 days p90:10 days

Wave Height > 5.0 ft Mean: 17.2 days Range: 5.3 - 29.1 days p50:27 days p75:23.5 days p90:2.5 days

Wave Height > 6.0 ft Mean: 11.0 days Range: 1.3 - 20.8 days p50:20 days p75:15.5 days p90:9 days

Wind Speed > 15.0 knots Mean: 10.2 days Range: 5.8 - 14.7 days p50:10 days p75:7.5 days p90:5 days

Wind Speed > 20.0 knots Mean: 0.4 days Range: 0.0 - 1.0 days p50:0.5 days p75:0.5 days p90:0.5 days

Wind Speed > 25.0 knots Mean: 0.0 days Range: 0.0 - 0.0 days p50:0.5 days p75:0.5 days p90:0.5 days

Working Window

Wave Height < 4.0 ft
A 1 day or longer window will statistically occur 1.1 times per month
A 2 day or longer window will statistically occur 0.7 times per month
A 3 day or longer window will statistically occur 0.5 times per month

Wave Height < 5.0 ft
A 1 day or longer window will statistically occur 1.1 times per month
A 2 day or longer window will statistically occur 0.7 times per month
A 3 day or longer window will statistically occur 0.3 times per month

Wave Height < 6.0 ft
A 1 day or longer window will statistically occur 2.1 times per month
A 2 day or longer window will statistically occur 1.4 times per month
A 3 day or longer window will statistically occur 0.9 times per month

Waves

Mean Height: 4 - 6 ft

The wave heights will occasionally reach 10 - 12 ft, but rarely higher.

Mean Period: 8 - 10 sec

The wave periods will occasionally reach 18 - 20 sec, but rarely longer.

Principle Direction, from: NE

WindSea/Swell: 85% / 15%

Winds

Mean Speed: 10 - 15 kts

The winds will occasionally reach 20 - 25 kts, but rarely greater.

Principle Direction, from: ENE

Currents

Mean Speed: 0.25-0.50 kts

The currents will occasionally reach 0.75-1.00 kts, but rarely greater.

Principle Direction, to: NW

Weather Days

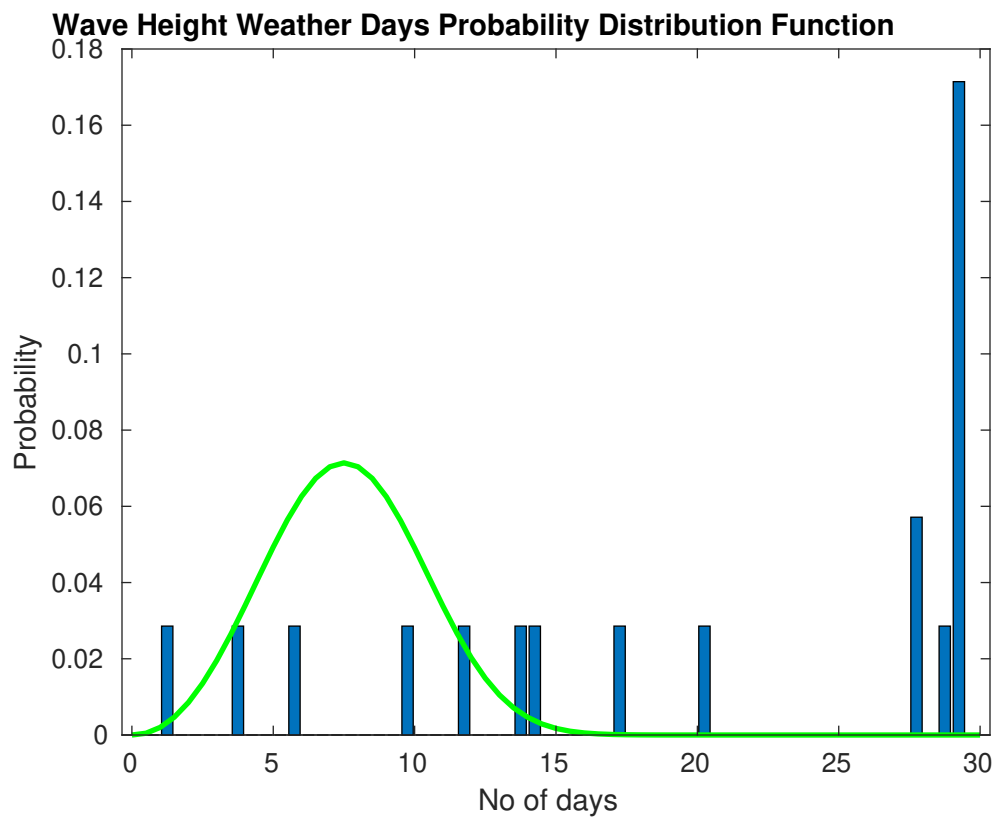
Current Speed > 0.5 knots Mean: 10.7 days Range: 5.6 - 15.8 days p50:12 days p75:9 days p90:3 days

Current Speed > 1.0 knots Mean: 0.0 days Range: 0.0 - 0.0 days p50:1 days p75:1 days p90:1 days

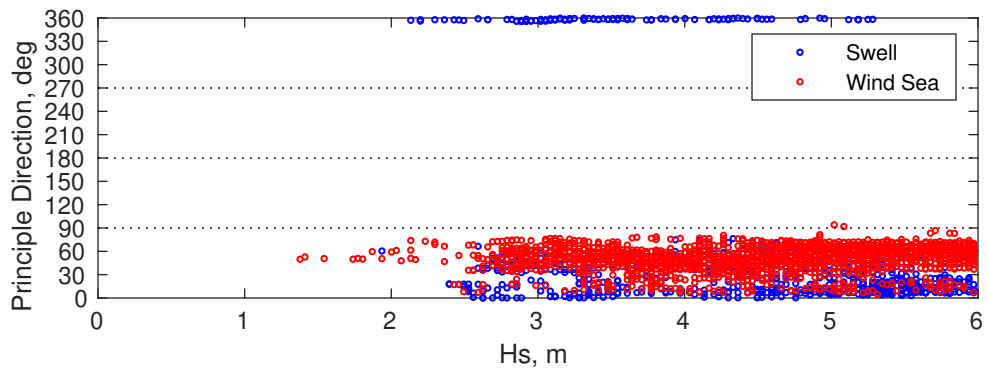
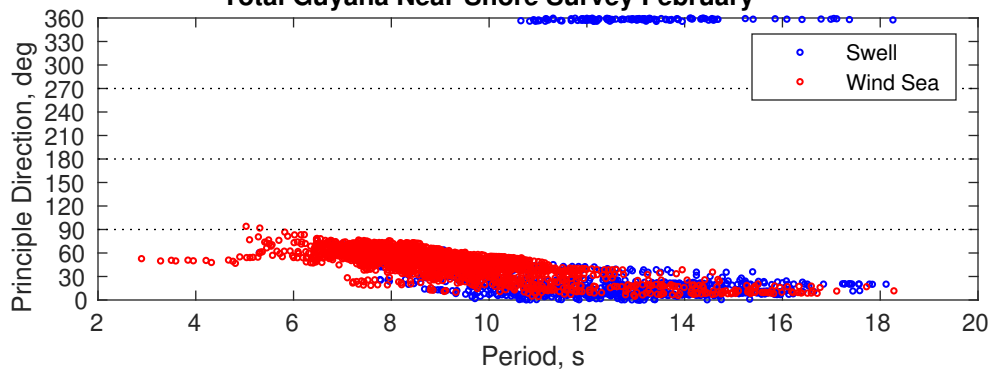
Current Speed > 1.5 knots Mean: 0.0 days Range: 0.0 - 0.0 days p50:1 days p75:1 days p90:1 days

Severe Storms

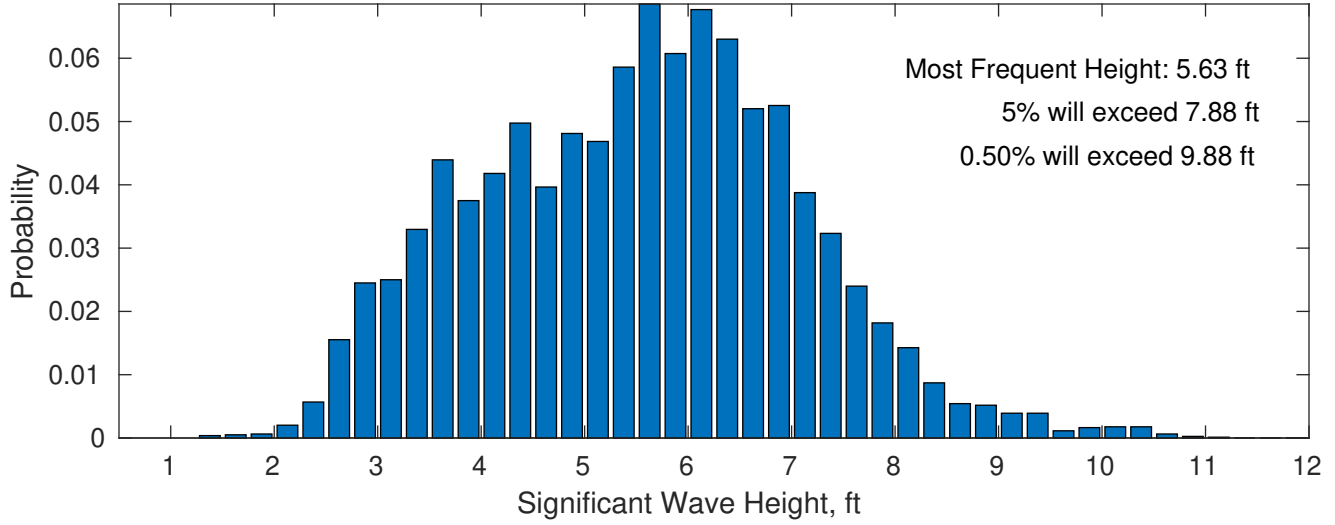
Severe storms with gale force winds and extreme waves are not expected during this month.



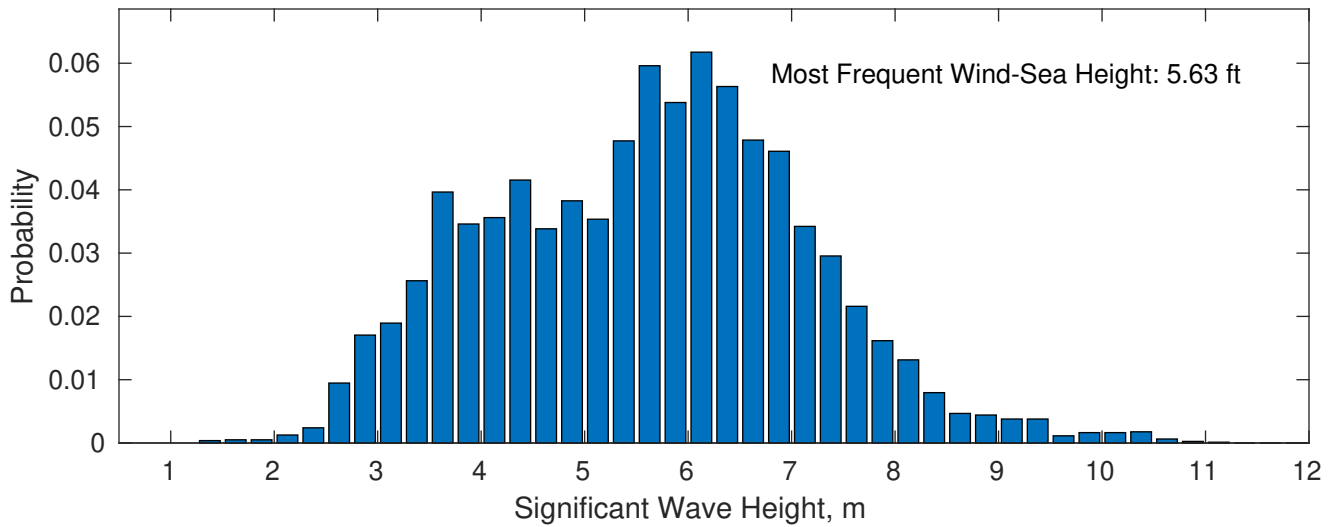
Total Guyana Near-Shore Survey February



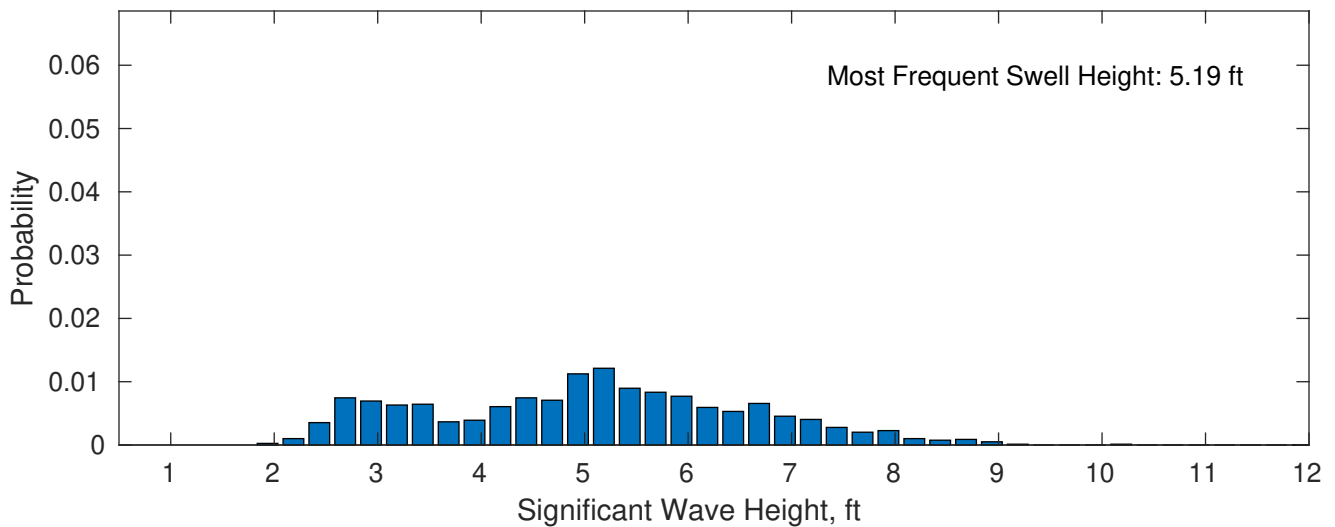
February Wave Height PDF: 1979 - 2015



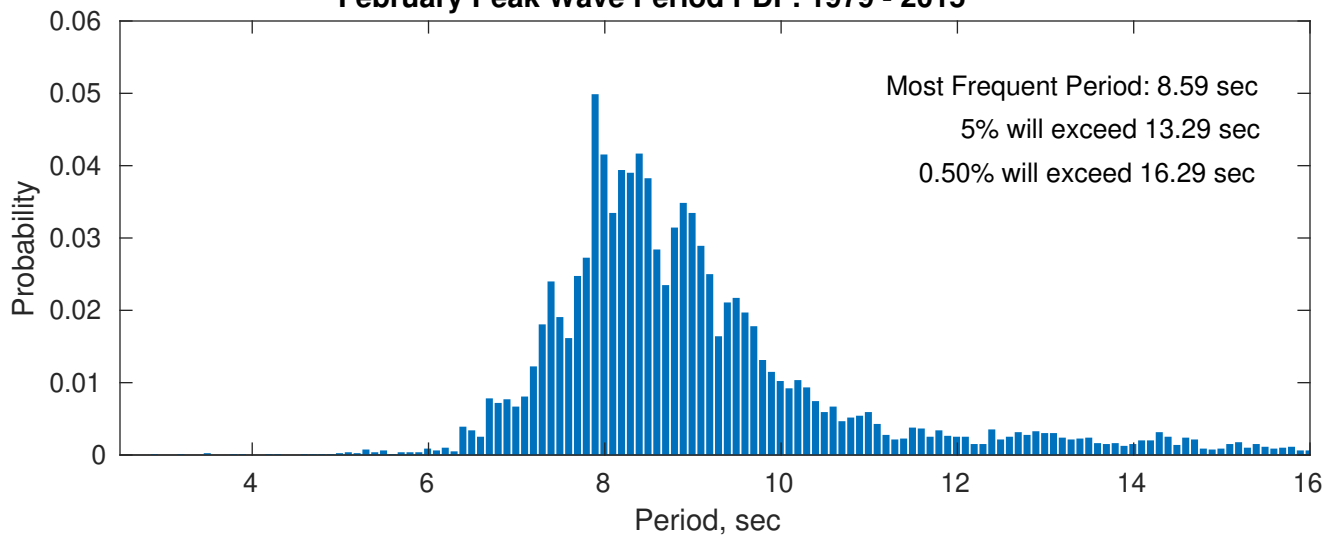
Wind-Sea: 85.47%



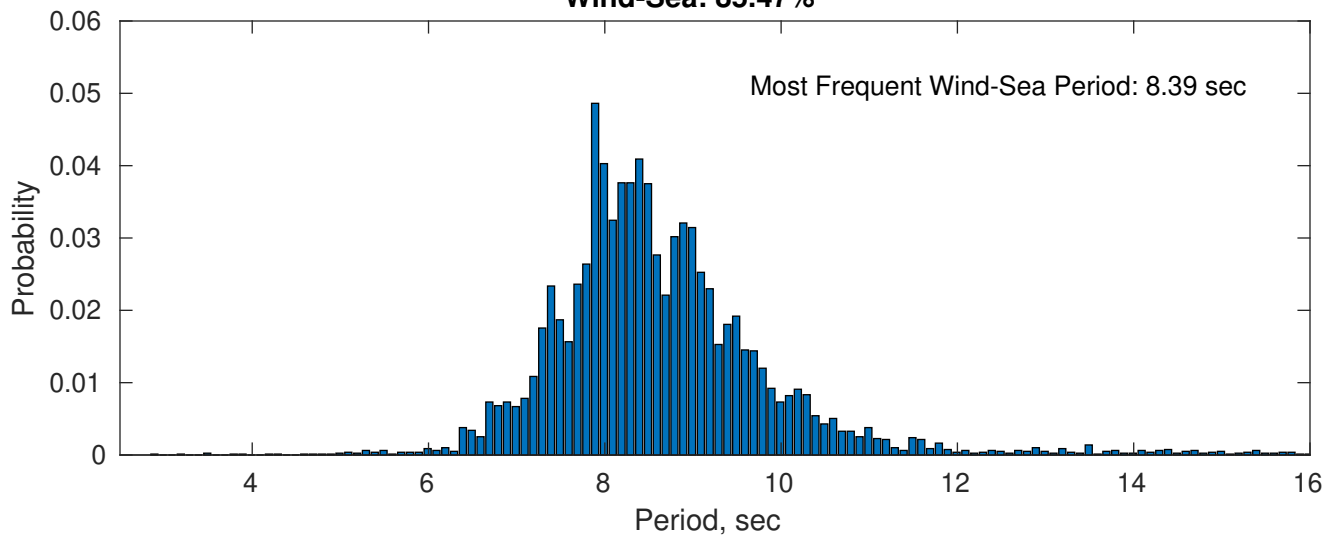
Swell: 14.53%



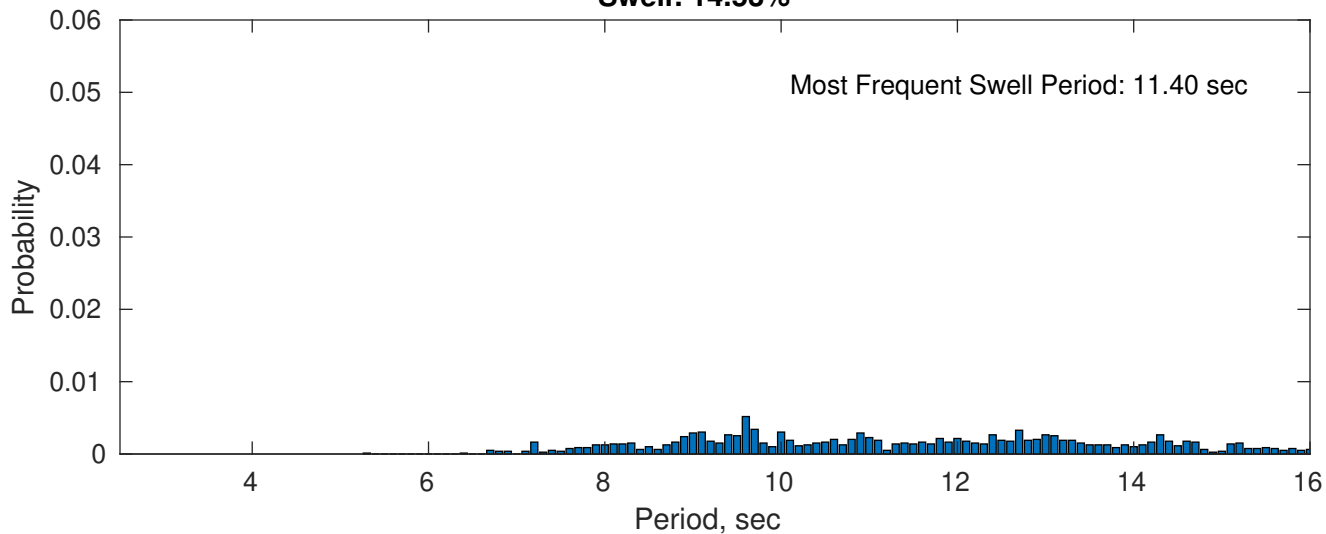
February Peak Wave Period PDF: 1979 - 2015



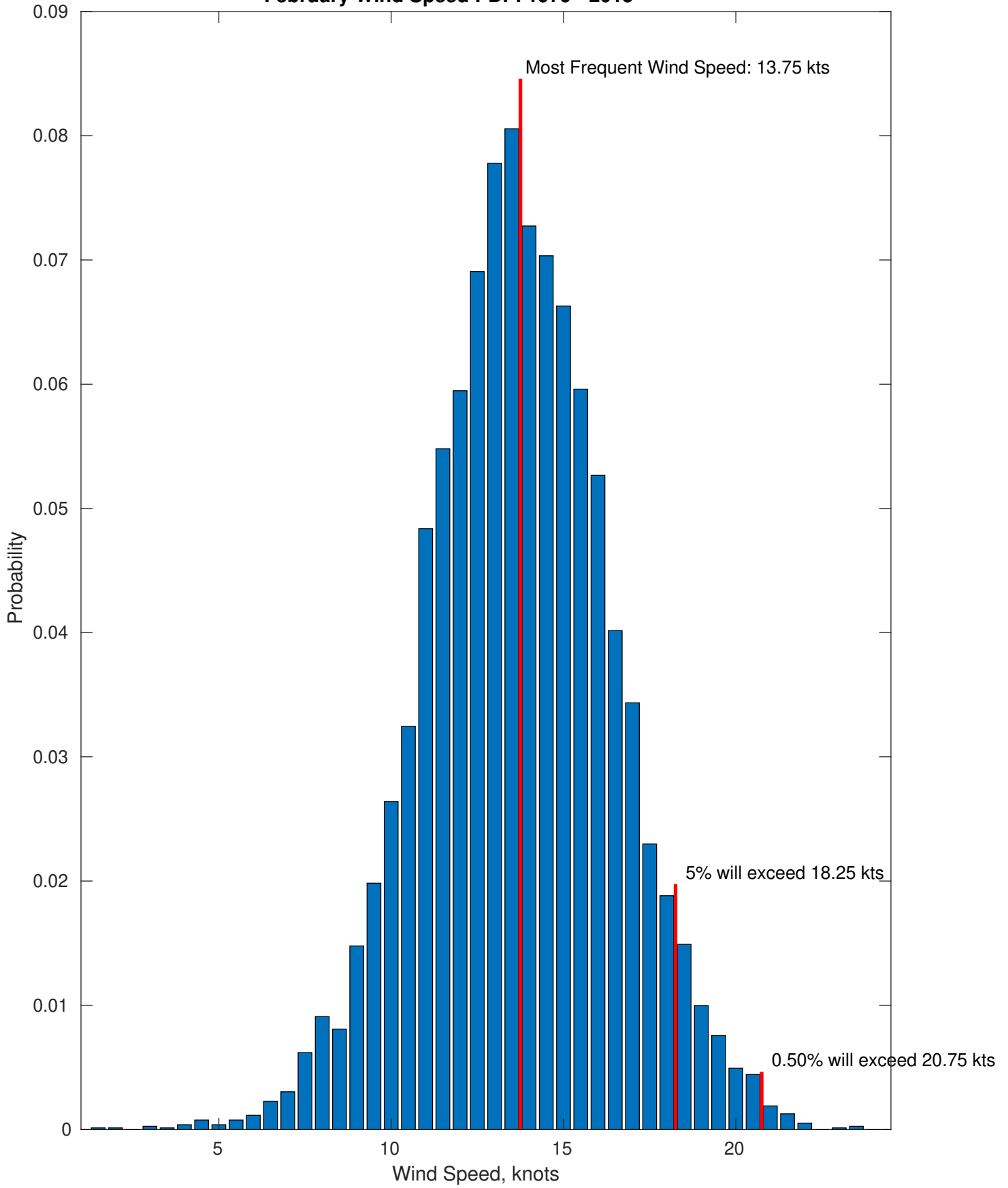
Wind-Sea: 85.47%



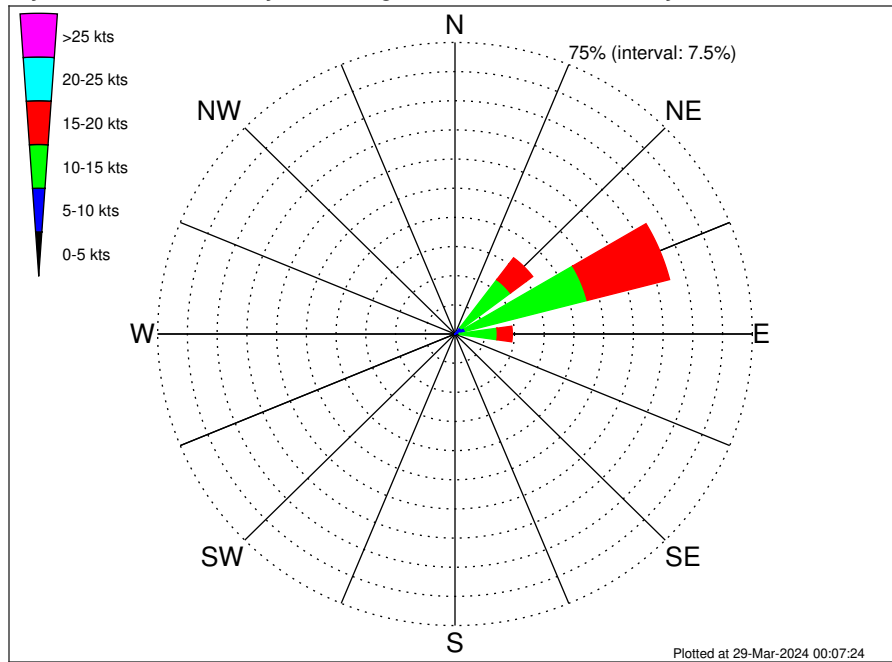
Swell: 14.53%



February Wind Speed PDF: 1979 - 2015



Total Guyana Near-Shore Survey Climatological Wind Rose for February: 1979 - 2015



Joint Frequency Distribution Table

	N	NNE	NE	ENE	E	ESE	SE	SSE	S	SSW	SW	WSW	W	WNW	NW	NNW	Total	
calm	•	•	•	•	•	•	•	•	•	•	•	•	•	•	•	•	•	
0 - 5 kts	0.01	0.03	0.03	0.04	0.05	0.01	•	•	•	•	•	•	•	•	•	0.01	•	0.18
5 - 10 kts	0.11	0.53	2.07	2.69	1.05	0.08	•	•	•	•	•	•	•	•	•	•	0.03	6.55
10 - 15 kts	0.09	1.67	15.42	31.72	9.57	0.73	•	•	•	•	•	•	•	•	•	•	•	59.20
15 - 20 kts	•	0.27	7.03	21.47	3.79	0.18	•	•	•	•	•	•	•	•	•	•	•	32.73
20 - 25 kts	•	•	0.19	1.01	0.14	•	•	•	•	•	•	•	•	•	•	•	•	1.34
25 - 30 kts	•	•	•	•	•	•	•	•	•	•	•	•	•	•	•	•	•	•
30 - 35 kts	•	•	•	•	•	•	•	•	•	•	•	•	•	•	•	•	•	•
35 - 40 kts	•	•	•	•	•	•	•	•	•	•	•	•	•	•	•	•	•	•
40 - 45 kts	•	•	•	•	•	•	•	•	•	•	•	•	•	•	•	•	•	•
45 - 50 kts	•	•	•	•	•	•	•	•	•	•	•	•	•	•	•	•	•	•
Total	0.21	2.49	24.74	56.93	14.60	1.00	•	•	•	•	•	•	•	•	•	0.01	0.03	100.00