

Total Guyana Near-Shore Survey - January

Latitude: 7.59 N Longitude: 58.11 W

Weather Days

Wave Height > 4.0 ft Mean: 22.4 days Range: 13.7 - 30.0 days p50:30 days p75:29 days p90:9.5 days

Wave Height > 5.0 ft Mean: 17.0 days Range: 5.7 - 28.2 days p50:26 days p75:21.5 days p90:1.5 days

Wave Height > 6.0 ft Mean: 9.0 days Range: 0.2 - 17.7 days p50:17 days p75:10.5 days p90:7.5 days

Wind Speed > 15.0 knots Mean: 7.9 days Range: 3.9 - 11.9 days p50:7.5 days p75:5 days p90:3 days

Wind Speed > 20.0 knots Mean: 0.3 days Range: 0.0 - 0.6 days p50:0.5 days p75:0.5 days p90:0.5 days

Wind Speed > 25.0 knots Mean: 0.0 days Range: 0.0 - 0.0 days p50:0.5 days p75:0.5 days p90:0.5 days

Working Window

Wave Height < 4.0 ft
A 1 day or longer window will statistically occur 1.0 times per month
A 2 day or longer window will statistically occur 0.7 times per month
A 3 day or longer window will statistically occur 0.5 times per month

Wave Height < 5.0 ft
A 1 day or longer window will statistically occur 1.6 times per month
A 2 day or longer window will statistically occur 0.8 times per month
A 3 day or longer window will statistically occur 0.7 times per month

Wave Height < 6.0 ft
A 1 day or longer window will statistically occur 2.7 times per month
A 2 day or longer window will statistically occur 1.9 times per month
A 3 day or longer window will statistically occur 1.4 times per month

Waves

Mean Height: 4 - 6 ft

The wave heights will occasionally reach 8 - 10 ft, but rarely higher.

Mean Period: 8 - 10 sec

The wave periods will occasionally reach 18 - 20 sec, but rarely longer.

Principle Direction, from: NE

WindSea/Swell: 83% / 17%

Winds

Mean Speed: 10 - 15 kts

The winds will occasionally reach 20 - 25 kts, but rarely greater.

Principle Direction, from: ENE

Currents

Mean Speed: 0.25-0.50 kts

The currents will occasionally reach 0.75-1.00 kts, but rarely greater.

Principle Direction, to: NW

Weather Days

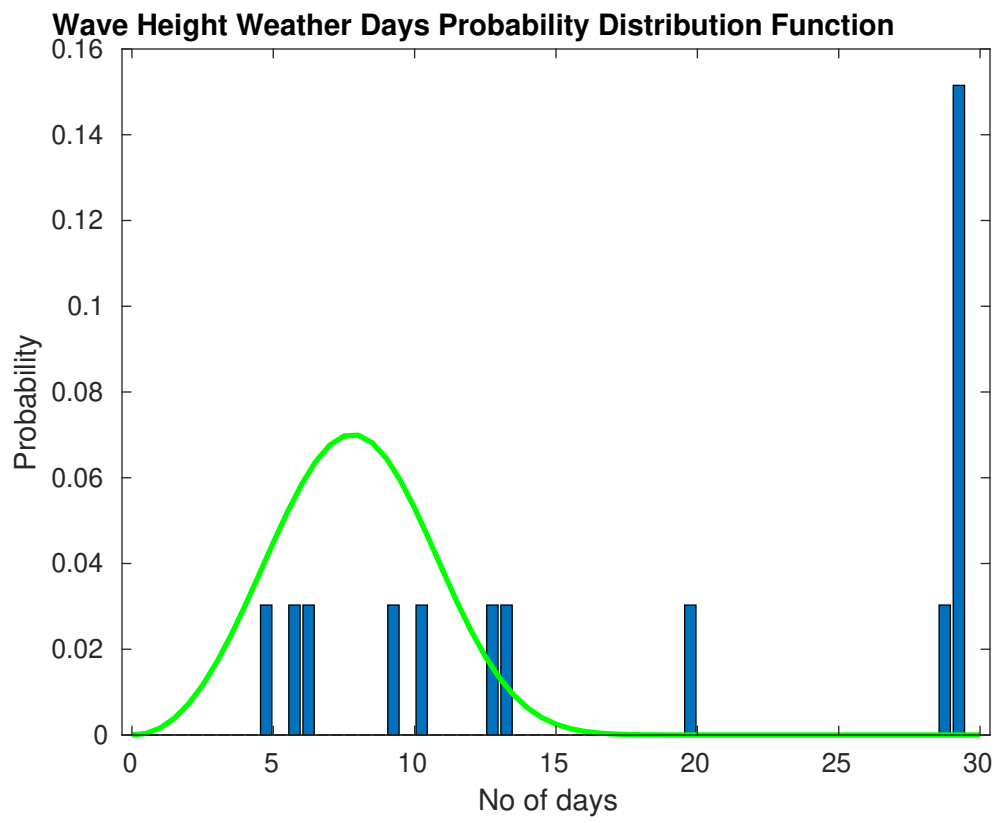
Current Speed > 0.5 knots Mean: 7.4 days Range: 3.2 - 11.7 days p50:6 days p75:5 days p90:5 days

Current Speed > 1.0 knots Mean: 0.0 days Range: 0.0 - 0.0 days p50:1 days p75:1 days p90:1 days

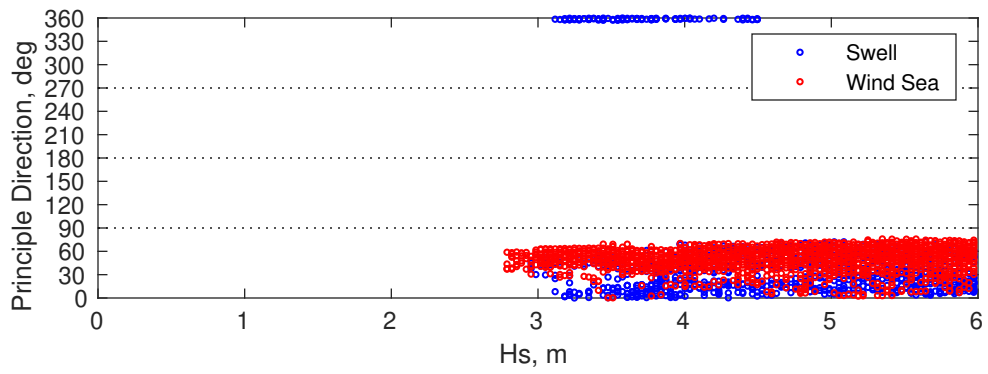
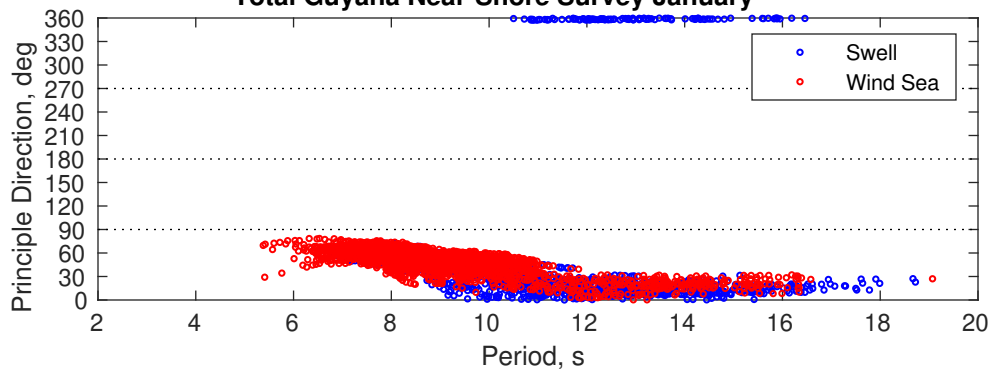
Current Speed > 1.5 knots Mean: 0.0 days Range: 0.0 - 0.0 days p50:1 days p75:1 days p90:1 days

Severe Storms

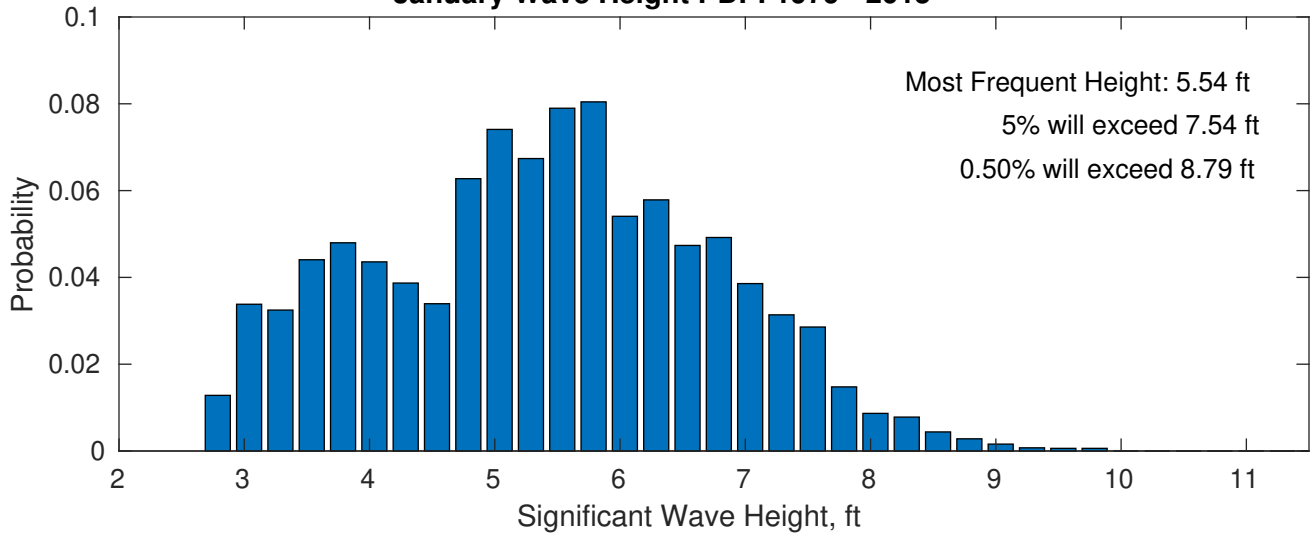
Severe storms with gale force winds and extreme waves are not expected during this month.



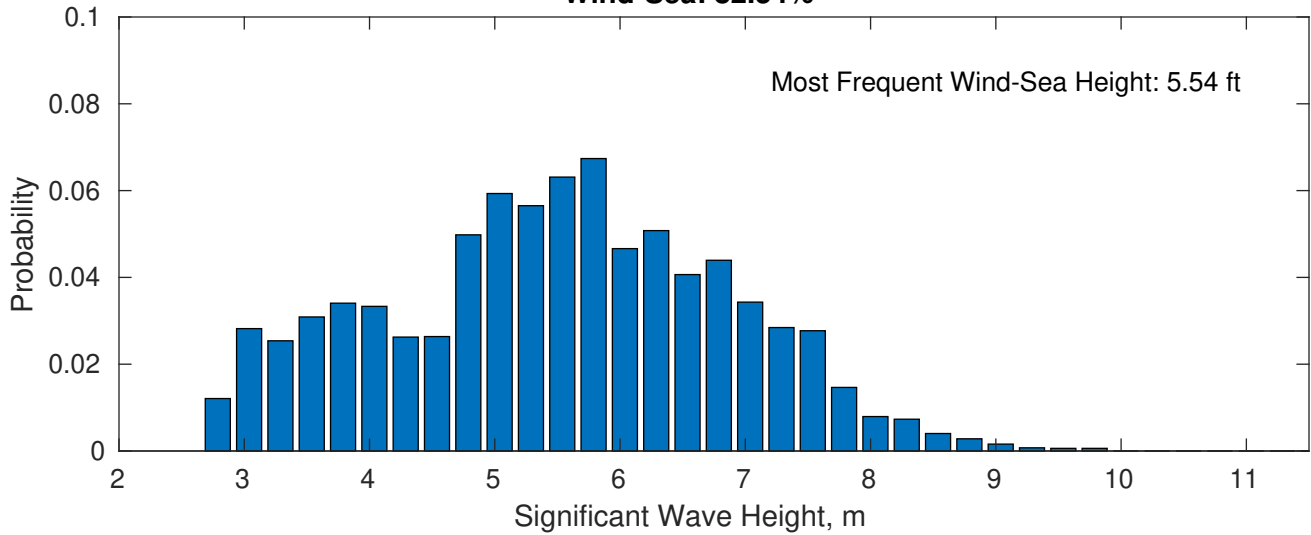
Total Guyana Near-Shore Survey January



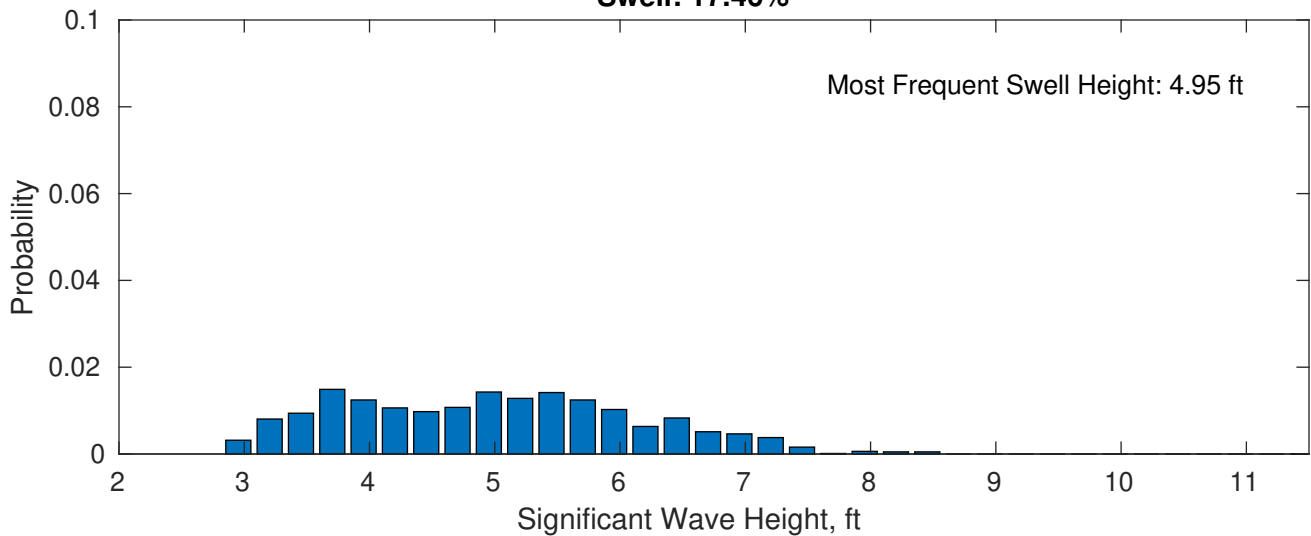
January Wave Height PDF: 1979 - 2015



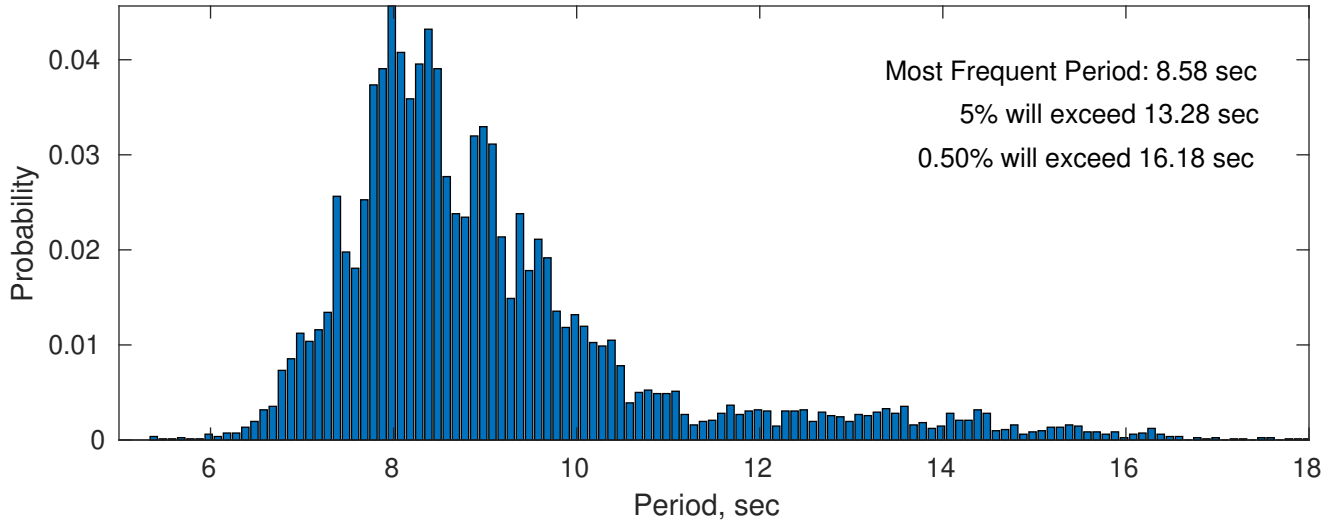
Wind-Sea: 82.54%



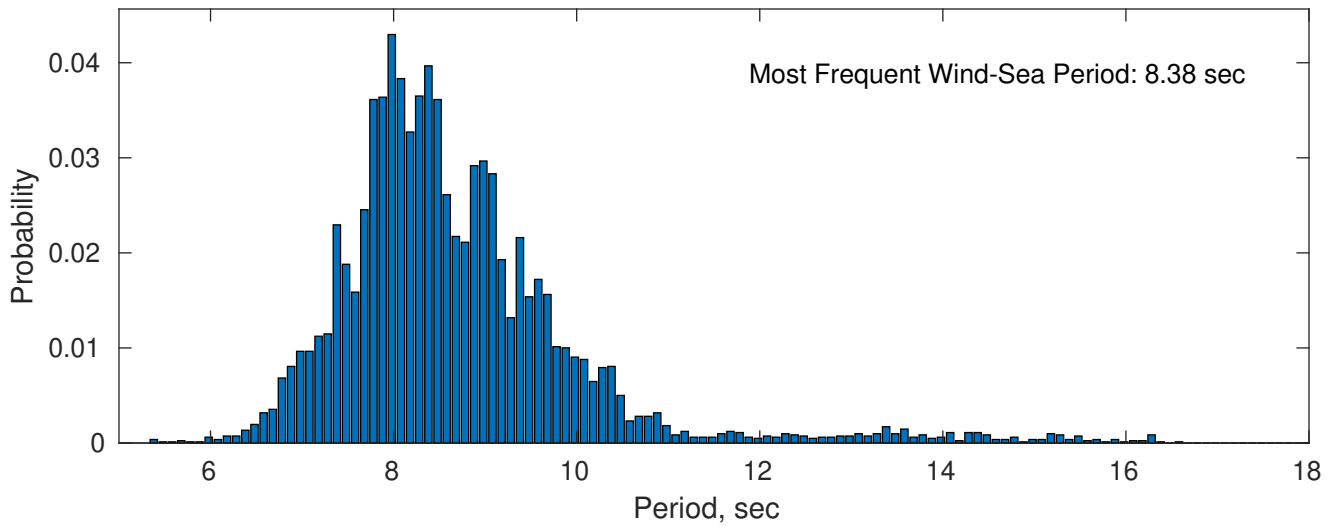
Swell: 17.46%



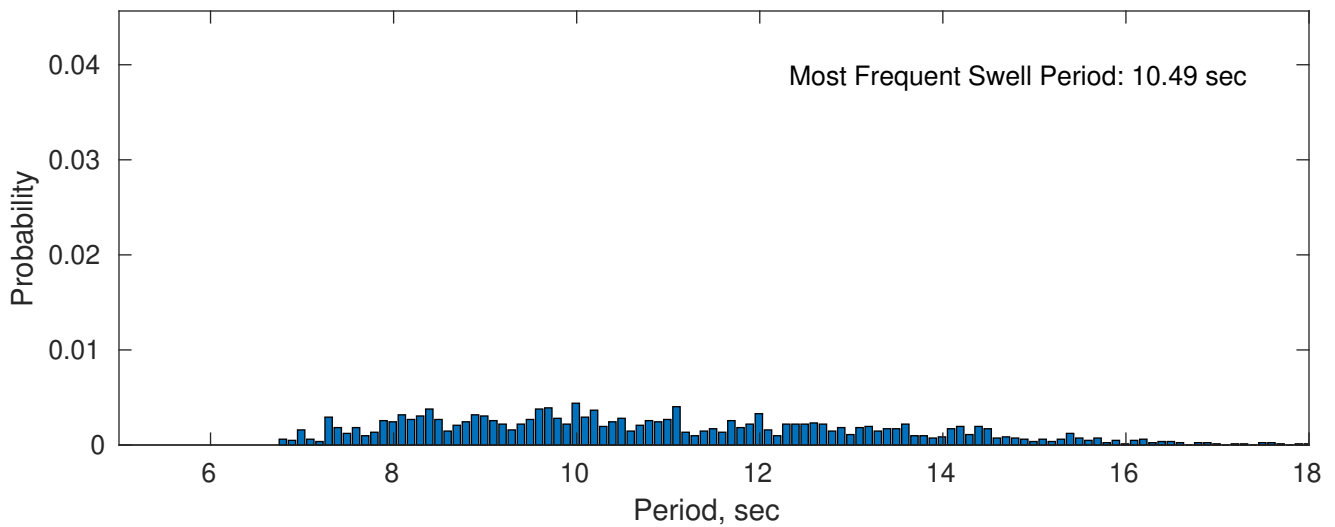
January Peak Wave Period PDF: 1979 - 2015



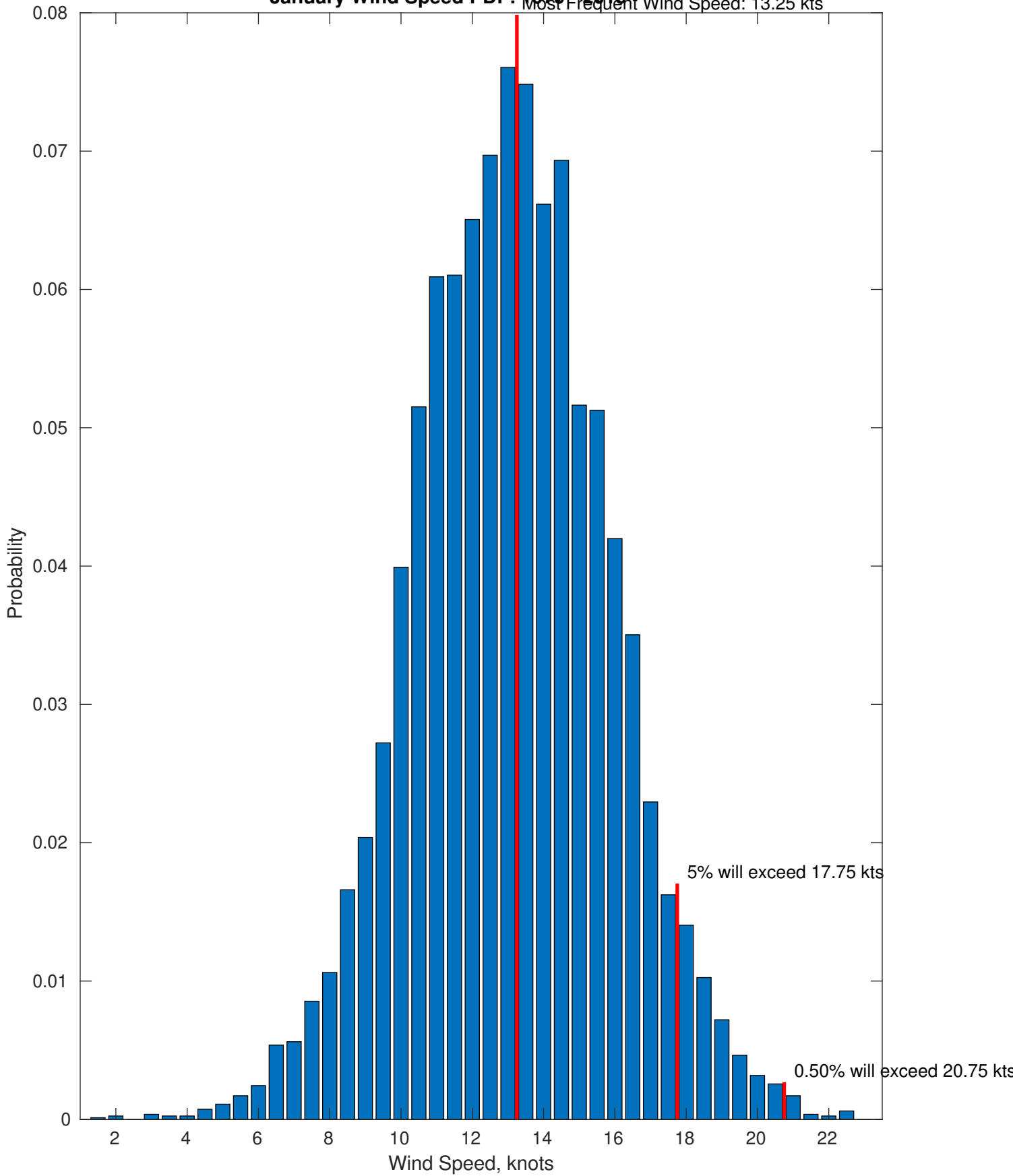
Wind-Sea: 82.54%



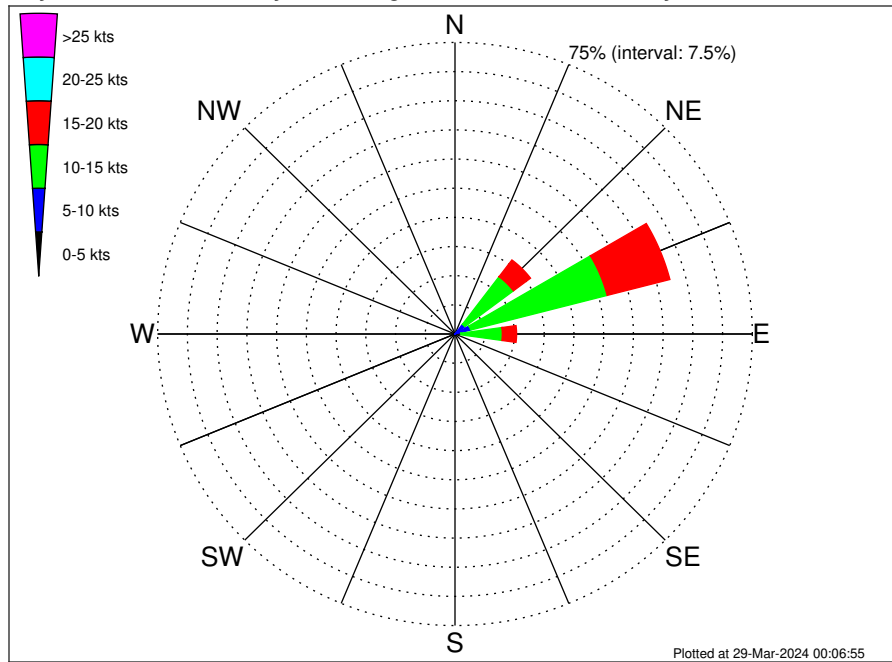
Swell: 17.46%



January Wind Speed PDF: 1979-2015
Most Frequent Wind Speed: 13.25 kts



Total Guyana Near-Shore Survey Climatological Wind Rose for January: 1979 - 2015



Joint Frequency Distribution Table

	N	NNE	NE	ENE	E	ESE	SE	SSE	S	SSW	SW	WSW	W	WNW	NW	NNW	Total
calm	•	•	•	•	•	•	•	•	•	•	•	•	•	•	•	•	•
0 - 5 kts	0.02	0.02	0.04	0.01	0.04	0.01	•	0.01	•	•	0.01	•	0.01	•	0.01	•	0.20
5 - 10 kts	0.12	0.94	3.08	4.06	1.45	0.21	0.04	•	•	•	•	•	0.01	•	0.02	0.02	9.96
10 - 15 kts	0.11	1.53	15.34	35.57	10.45	0.45	•	•	•	•	•	•	•	•	•	•	63.45
15 - 20 kts	•	0.10	5.40	16.35	3.60	0.09	•	•	•	•	•	•	•	•	•	•	25.52
20 - 25 kts	•	•	0.18	0.56	0.12	•	•	•	•	•	•	•	•	•	•	•	0.87
25 - 30 kts	•	•	•	•	•	•	•	•	•	•	•	•	•	•	•	•	•
30 - 35 kts	•	•	•	•	•	•	•	•	•	•	•	•	•	•	•	•	•
35 - 40 kts	•	•	•	•	•	•	•	•	•	•	•	•	•	•	•	•	•
40 - 45 kts	•	•	•	•	•	•	•	•	•	•	•	•	•	•	•	•	•
45 - 50 kts	•	•	•	•	•	•	•	•	•	•	•	•	•	•	•	•	•
Total	0.26	2.59	24.04	56.56	15.66	0.76	0.04	0.01	•	•	0.01	•	0.02	•	0.04	0.02	100.00