

Total Guyana Near-Shore Survey - July

Latitude: 7.59 N Longitude: 58.11 W

Weather Days

Wave Height > 4.0 ft Mean: 10.4 days Range: 2.7 - 18.1 days p50:15.5 days p75:10.5 days p90:6.5 days

Wave Height > 5.0 ft Mean: 2.3 days Range: 0.0 - 4.7 days p50:4.5 days p75:2 days p90:1 days

Wave Height > 6.0 ft Mean: 0.3 days Range: 0.0 - 0.9 days p50:30 days p75:2.5 days p90:0.5 days

Wind Speed > 15.0 knots Mean: 2.2 days Range: 0.7 - 3.6 days p50:2 days p75:1.5 days p90:1 days

Wind Speed > 20.0 knots Mean: 0.1 days Range: 0.0 - 0.2 days p50:0.5 days p75:0.5 days p90:0.5 days

Wind Speed > 25.0 knots Mean: 0.0 days Range: 0.0 - 0.0 days p50:0.5 days p75:0.5 days p90:0.5 days

Working Window

Wave Height < 4.0 ft
A 1 day or longer window will statistically occur 3.7 times per month
A 2 day or longer window will statistically occur 2.4 times per month
A 3 day or longer window will statistically occur 1.6 times per month

Wave Height < 5.0 ft
A 1 day or longer window will statistically occur 2.7 times per month
A 2 day or longer window will statistically occur 2.2 times per month
A 3 day or longer window will statistically occur 2.0 times per month

Wave Height < 6.0 ft
A 1 day or longer window will statistically occur 1.5 times per month
A 2 day or longer window will statistically occur 1.4 times per month
A 3 day or longer window will statistically occur 1.4 times per month

Waves

Mean Height: 2 - 4 ft

The wave heights will occasionally reach 6 - 8 ft, but rarely higher.

Mean Period: 6 - 8 sec

The wave periods will occasionally reach 10 - 12 sec, but rarely longer.

Principle Direction, from: NE

WindSea/Swell: 37% / 63%

Winds

Mean Speed: 10 - 15 kts

The winds will occasionally reach 15 - 20 kts, but rarely greater.

Principle Direction, from: E

Currents

Mean Speed: 0.50-0.75 kts

The currents will occasionally reach 0.75-1.00 kts, but rarely greater.

Principle Direction, to: NNW

Weather Days

Current Speed > 0.5 knots Mean: 16.5 days Range: 10.2 - 22.8 days p50:17 days p75:12 days p90:10 days

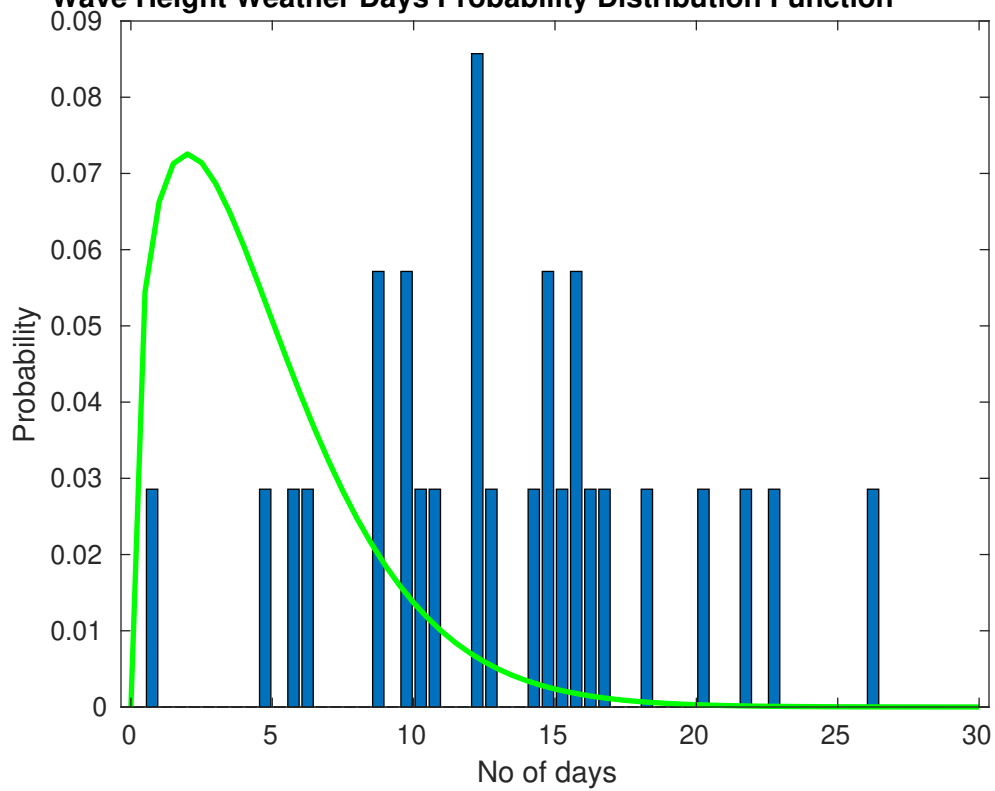
Current Speed > 1.0 knots Mean: 0.0 days Range: 0.0 - 0.0 days p50:1 days p75:1 days p90:1 days

Current Speed > 1.5 knots Mean: 0.0 days Range: 0.0 - 0.0 days p50:1 days p75:1 days p90:1 days

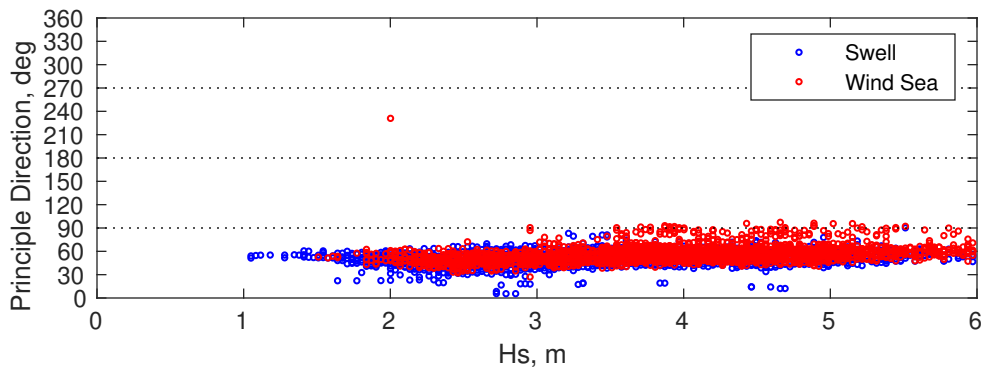
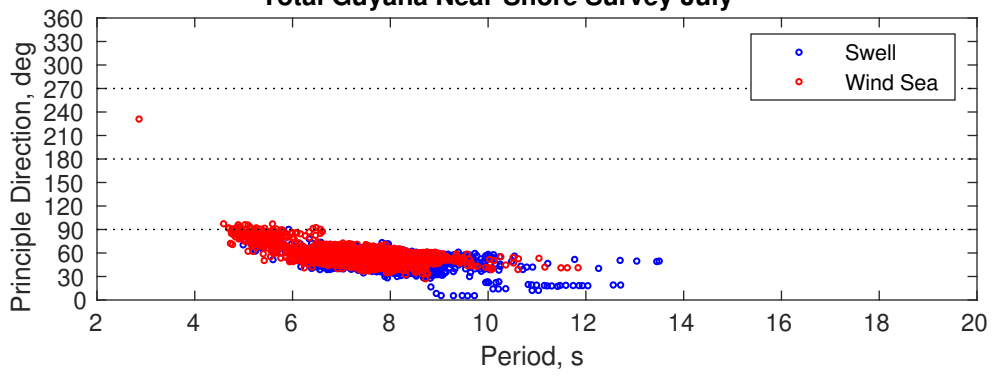
Severe Storms

Severe storms with gale force winds and extreme waves are not expected during this month.

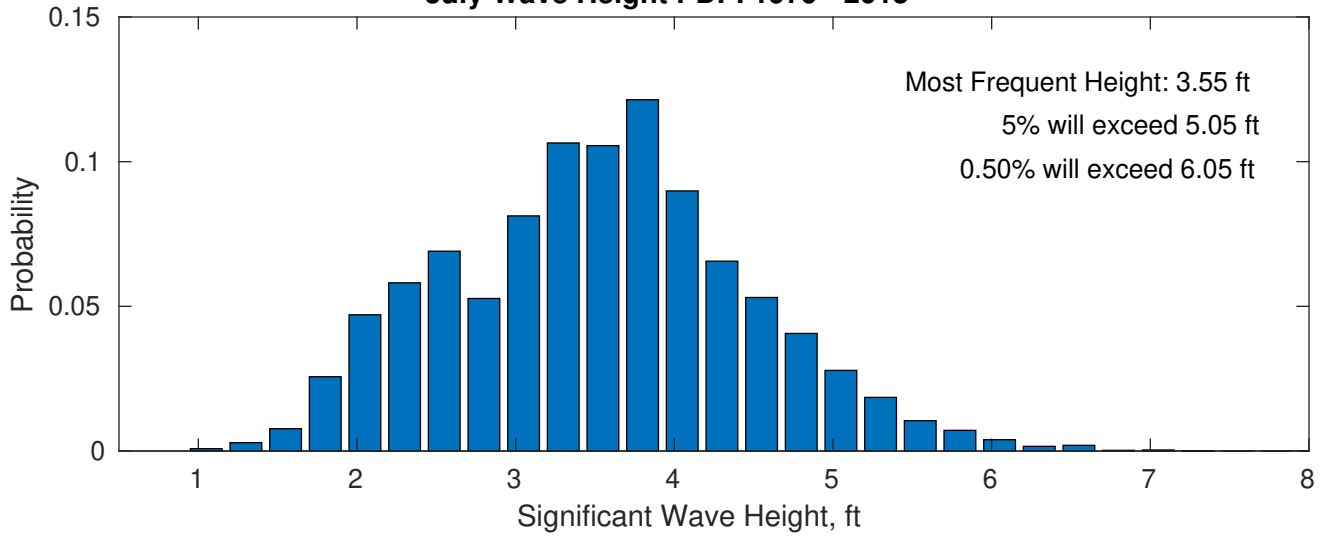
Wave Height Weather Days Probability Distribution Function



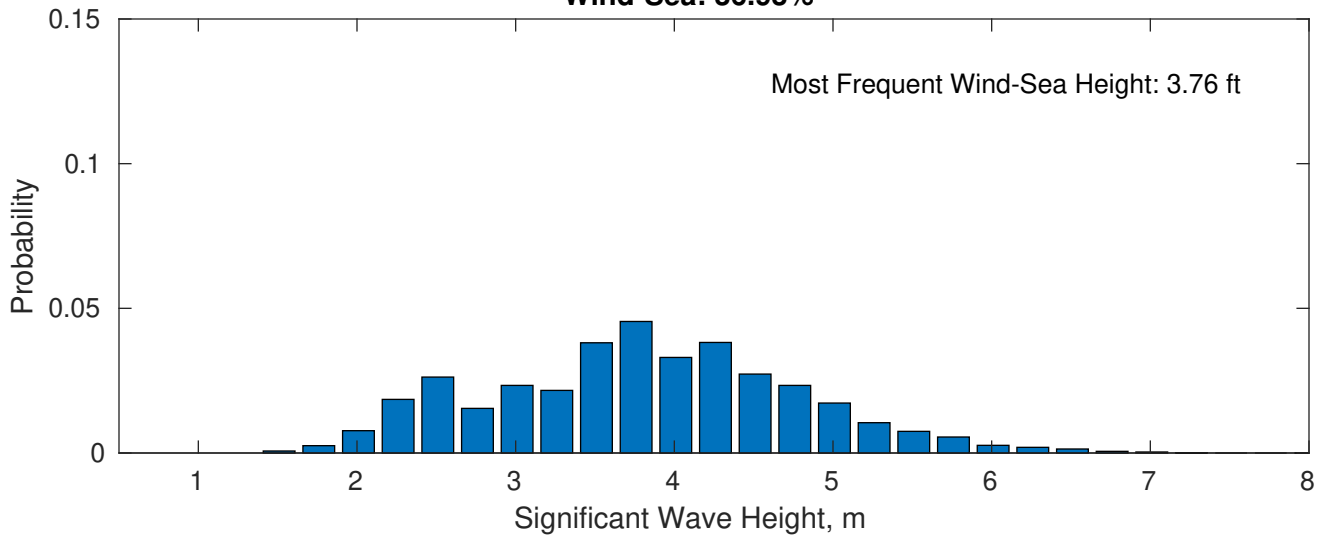
Total Guyana Near-Shore Survey July



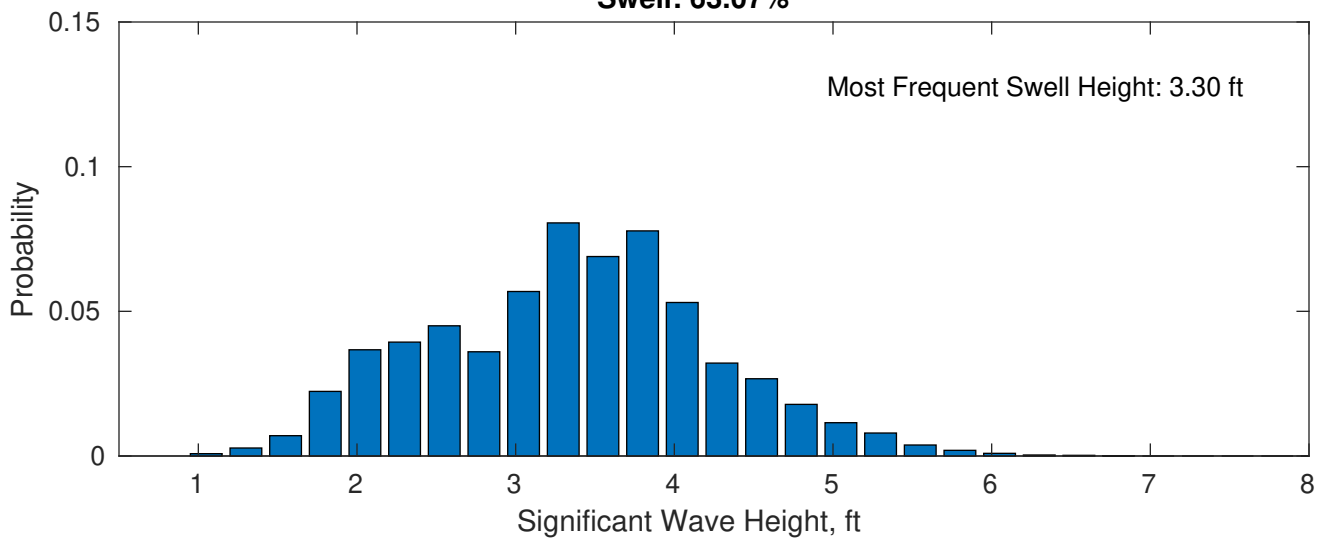
July Wave Height PDF: 1979 - 2015



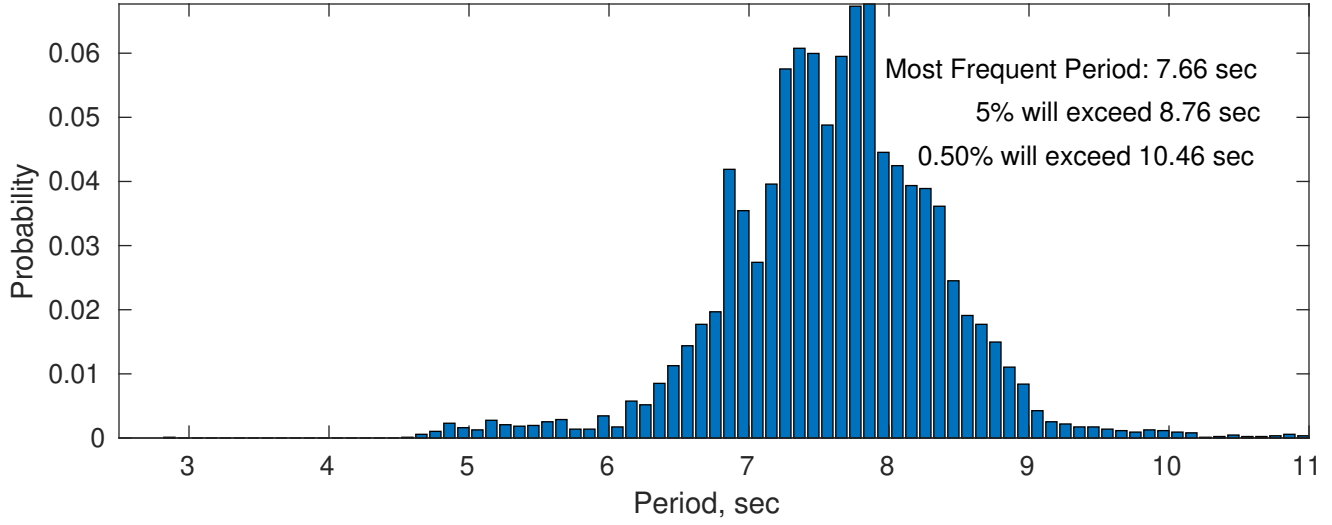
Wind-Sea: 36.93%



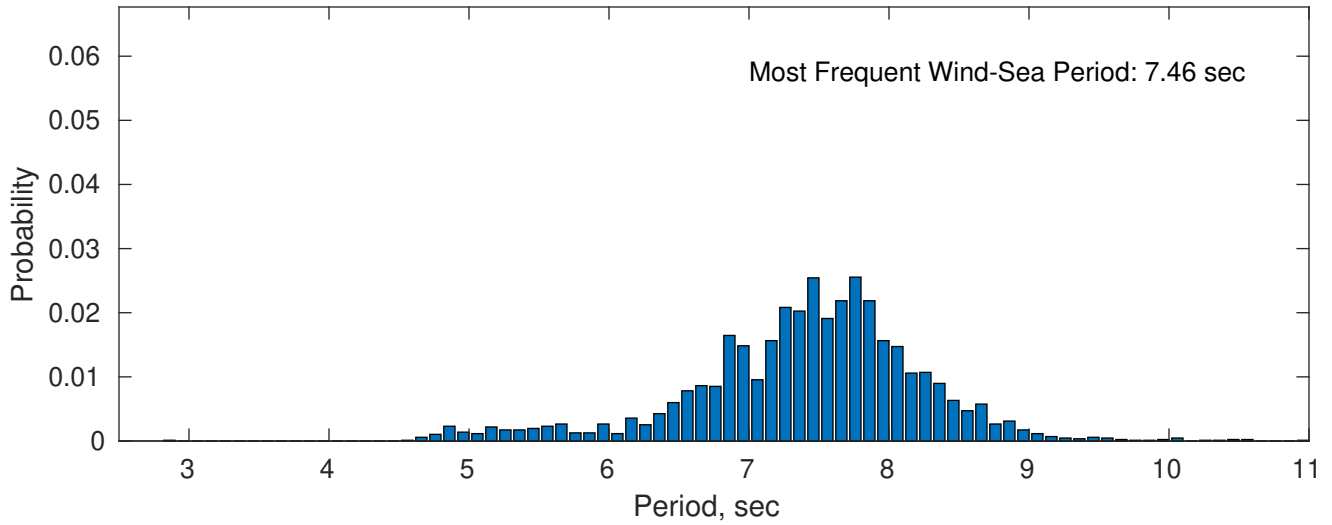
Swell: 63.07%



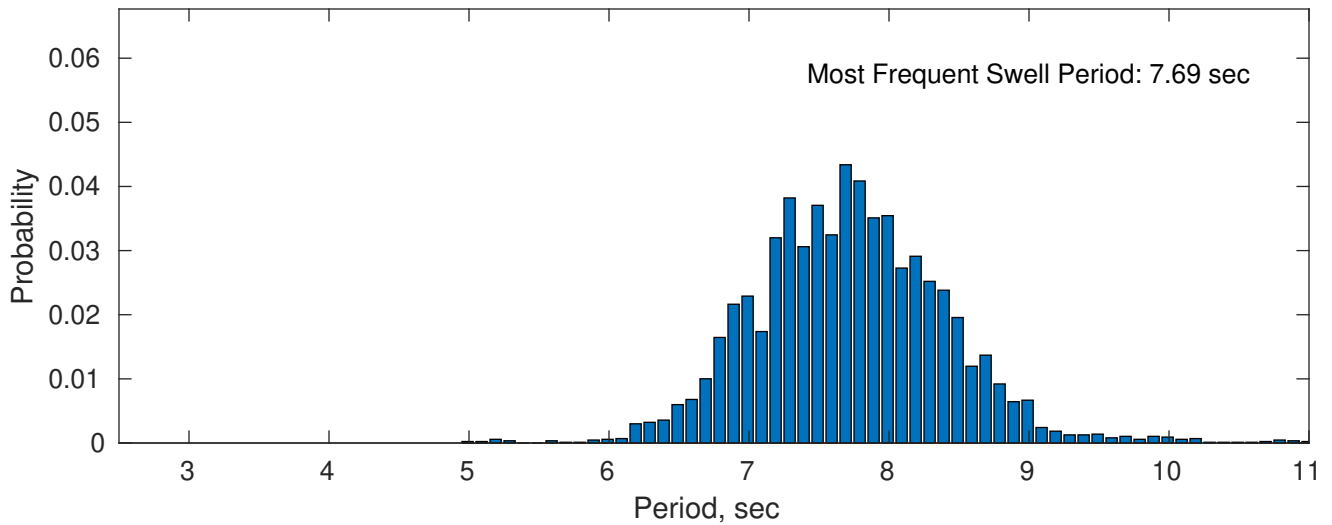
July Peak Wave Period PDF: 1979 - 2015



Wind-Sea: 36.93%

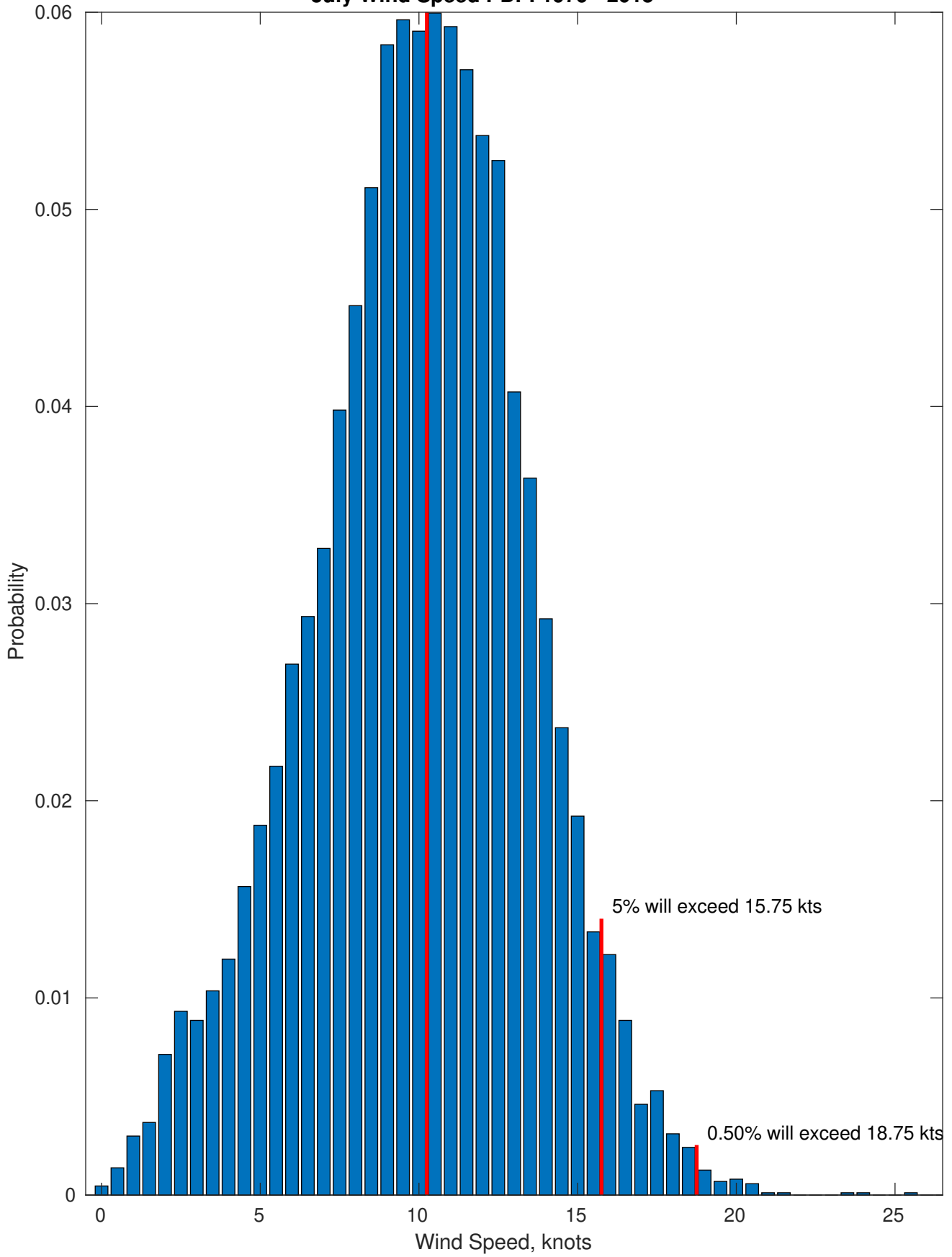


Swell: 63.07%

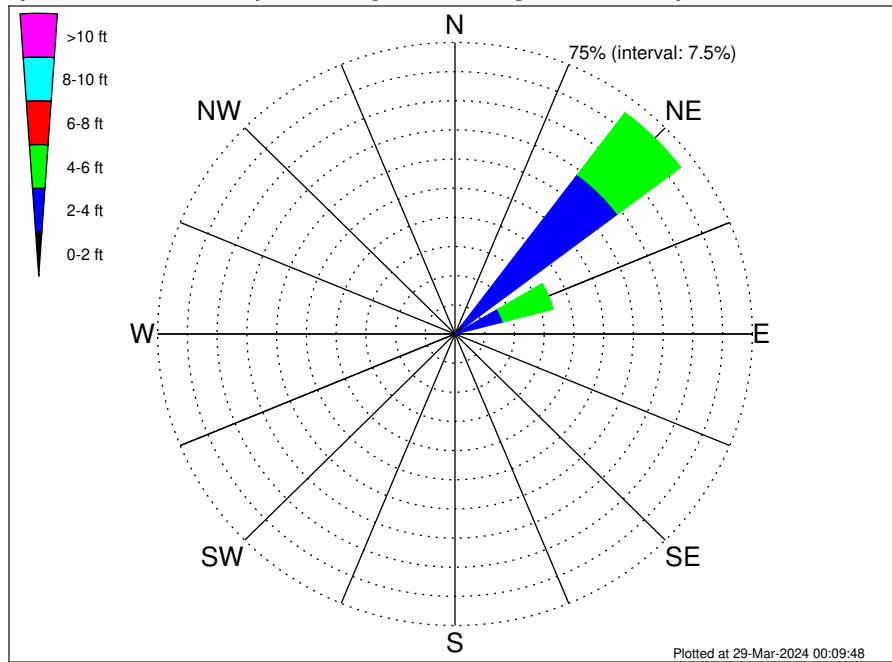


Most Frequent Wind Speed: 10.25 kts

July Wind Speed PDF: 1979 - 2015



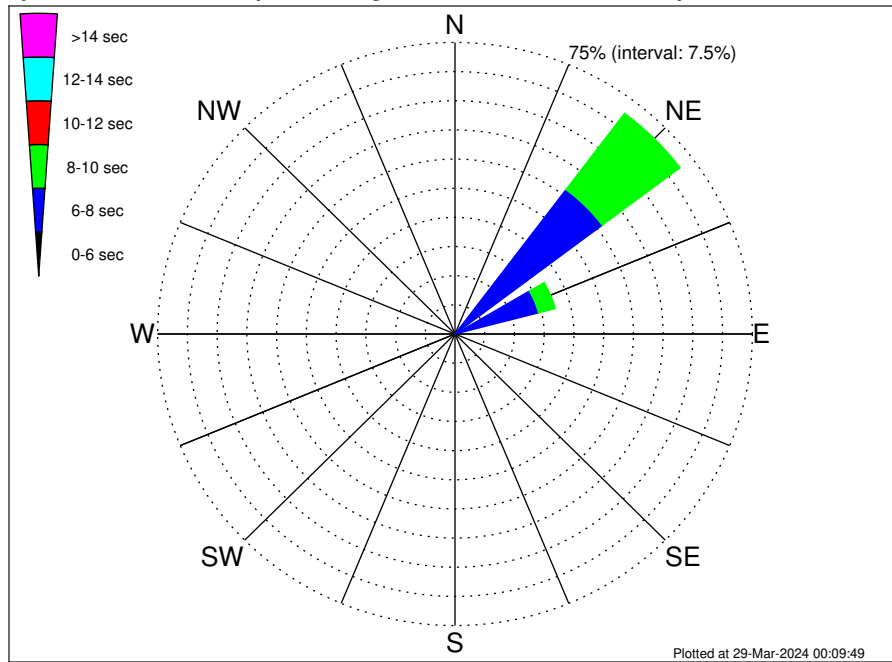
Total Guyana Near-Shore Survey Climatological WaveHeight Rose for July: 1979 - 2015



Joint Frequency Distribution Table

	N	NNE	NE	ENE	E	ESE	SE	SSE	S	SSW	SW	WSW	W	WNW	NW	NNW	Total
calm	•	•	•	•	•	•	•	•	•	•	•	•	•	•	•	•	•
1 - 2 ft	•	0.05	2.51	0.29	•	•	•	•	•	•	•	•	•	•	•	•	2.84
2 - 4 ft	0.07	0.69	48.84	12.20	0.45	•	•	•	•	•	0.01	•	•	•	•	•	62.26
4 - 6 ft	•	0.06	19.90	13.04	0.87	•	•	•	•	•	•	•	•	•	•	•	33.87
6 - 8 ft	•	•	0.28	0.58	0.17	•	•	•	•	•	•	•	•	•	•	•	1.02
8 - 10 ft	•	•	•	•	•	•	•	•	•	•	•	•	•	•	•	•	•
10 - 12 ft	•	•	•	•	•	•	•	•	•	•	•	•	•	•	•	•	•
12 - 14 ft	•	•	•	•	•	•	•	•	•	•	•	•	•	•	•	•	•
14 - 16 ft	•	•	•	•	•	•	•	•	•	•	•	•	•	•	•	•	•
16 - 18 ft	•	•	•	•	•	•	•	•	•	•	•	•	•	•	•	•	•
> 18 ft	•	•	•	•	•	•	•	•	•	•	•	•	•	•	•	•	•
Total	0.07	0.79	71.53	26.10	1.50	•	•	•	•	•	0.01	•	•	•	•	•	100.00

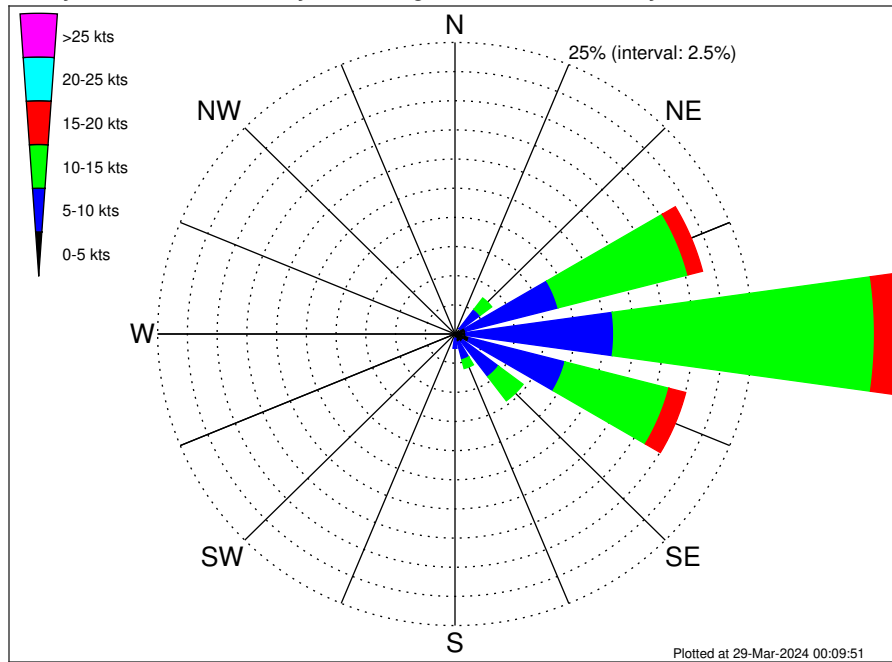
Total Guyana Near-Shore Survey Climatological WavePeriod Rose for July: 1979 - 2015



Joint Frequency Distribution Table

	N	NNE	NE	ENE	E	ESE	SE	SSE	S	SSW	SW	WSW	W	WNW	NW	NNW	Total
calm	•	•	•	•	•	•	•	•	•	•	•	•	•	•	•	•	•
1 - 2 sec	•	•	•	•	•	•	•	•	•	•	•	•	•	•	•	•	•
2 - 4 sec	•	•	•	•	•	•	•	•	•	•	0.01	•	•	•	•	•	0.01
4 - 6 sec	•	•	0.13	1.00	1.36	•	•	•	•	•	•	•	•	•	•	•	2.49
6 - 8 sec	•	0.05	46.39	20.76	0.14	•	•	•	•	•	•	•	•	•	•	•	67.34
8 - 10 sec	0.07	0.43	24.55	4.33	•	•	•	•	•	•	•	•	•	•	•	•	29.37
10 - 12 sec	•	0.29	0.40	0.01	•	•	•	•	•	•	•	•	•	•	•	•	0.70
12 - 14 sec	•	0.03	0.06	•	•	•	•	•	•	•	•	•	•	•	•	•	0.09
14 - 16 sec	•	•	•	•	•	•	•	•	•	•	•	•	•	•	•	•	•
18 - 20 sec	•	•	•	•	•	•	•	•	•	•	•	•	•	•	•	•	•
22 - 24 sec	•	•	•	•	•	•	•	•	•	•	•	•	•	•	•	•	•
Total	0.07	0.79	71.53	26.10	1.50	•	•	•	•	•	0.01	•	•	•	•	•	100.00

Total Guyana Near-Shore Survey Climatological Wind Rose for July: 1979 - 2015



Joint Frequency Distribution Table

	N	NNE	NE	ENE	E	ESE	SE	SSE	S	SSW	SW	WSW	W	WNW	NW	NNW	Total
calm	•	•	•	0.01	0.02	0.01	0.03	0.01	0.01	•	0.01	0.01	0.01	0.02	0.01	0.01	0.18
0 - 5 kts	0.20	0.31	0.58	0.92	0.91	1.23	0.79	0.71	0.37	0.25	0.21	0.20	0.14	0.02	0.08	0.08	7.00
5 - 10 kts	0.09	0.47	2.07	8.02	12.42	8.32	3.75	1.55	0.85	0.25	0.16	0.22	0.02	0.02	0.05	0.08	38.36
10 - 15 kts	0.02	0.06	1.22	11.28	21.92	9.01	2.59	0.78	0.18	0.07	0.01	•	•	•	•	0.01	47.16
15 - 20 kts	•	•	0.09	1.27	3.92	1.46	0.25	0.09	0.01	•	•	•	•	•	•	•	7.10
20 - 25 kts	•	•	•	0.02	0.09	0.07	•	•	•	•	•	•	•	•	•	•	0.18
25 - 30 kts	•	•	•	•	0.01	•	•	•	•	•	•	•	•	•	•	•	0.01
30 - 35 kts	•	•	•	•	•	•	•	•	•	•	•	•	•	•	•	•	•
35 - 40 kts	•	•	•	•	•	•	•	•	•	•	•	•	•	•	•	•	•
40 - 45 kts	•	•	•	•	•	•	•	•	•	•	•	•	•	•	•	•	•
45 - 50 kts	•	•	•	•	•	•	•	•	•	•	•	•	•	•	•	•	•
Total	0.31	0.84	3.96	21.52	39.30	20.11	7.42	3.15	1.43	0.58	0.39	0.43	0.17	0.07	0.14	0.18	100.00