

## Total Guyana Near-Shore Survey - June

Latitude: 7.59 N Longitude: 58.11 W

### Weather Days

Wave Height > 4.0 ft Mean: 19.2 days Range: 7.6 - 30.0 days p50:26.5 days p75:22 days p90:5.5 days

Wave Height > 5.0 ft Mean: 8.3 days Range: 2.2 - 14.4 days p50:12.5 days p75:9 days p90:7 days

Wave Height > 6.0 ft Mean: 1.5 days Range: 0.0 - 3.2 days p50:3 days p75:1.5 days p90:1 days

Wind Speed > 15.0 knots Mean: 5.0 days Range: 2.7 - 7.4 days p50:5.5 days p75:3.5 days p90:2 days

Wind Speed > 20.0 knots Mean: 0.2 days Range: 0.0 - 0.4 days p50:0.5 days p75:0.5 days p90:0.5 days

Wind Speed > 25.0 knots Mean: 0.0 days Range: 0.0 - 0.0 days p50:0.5 days p75:0.5 days p90:0.5 days

### Working Window

Wave Height < 4.0 ft  
A 1 day or longer window will statistically occur 1.5 times per month  
A 2 day or longer window will statistically occur 0.9 times per month  
A 3 day or longer window will statistically occur 0.6 times per month

Wave Height < 5.0 ft  
A 1 day or longer window will statistically occur 3.9 times per month  
A 2 day or longer window will statistically occur 2.6 times per month  
A 3 day or longer window will statistically occur 1.7 times per month

Wave Height < 6.0 ft  
A 1 day or longer window will statistically occur 2.6 times per month  
A 2 day or longer window will statistically occur 2.3 times per month  
A 3 day or longer window will statistically occur 2.0 times per month

### Waves

Mean Height: 4 - 6 ft

The wave heights will occasionally reach 6 - 8 ft, but rarely higher.

Mean Period: 6 - 8 sec

The wave periods will occasionally reach 8 - 10 sec, but rarely longer.

Principle Direction, from: ENE

WindSea/Swell: 65% / 35%

### Winds

Mean Speed: 10 - 15 kts

The winds will occasionally reach 15 - 20 kts, but rarely greater.

Principle Direction, from: E

### Currents

Mean Speed: 0.50-0.75 kts

The currents will occasionally reach 1.00-1.25 kts, but rarely greater.

Principle Direction, to: NW

Weather Days

Current Speed > 0.5 knots Mean: 23.1 days Range: 19.1 - 27.1 days p50:25 days p75:22 days p90:17 days

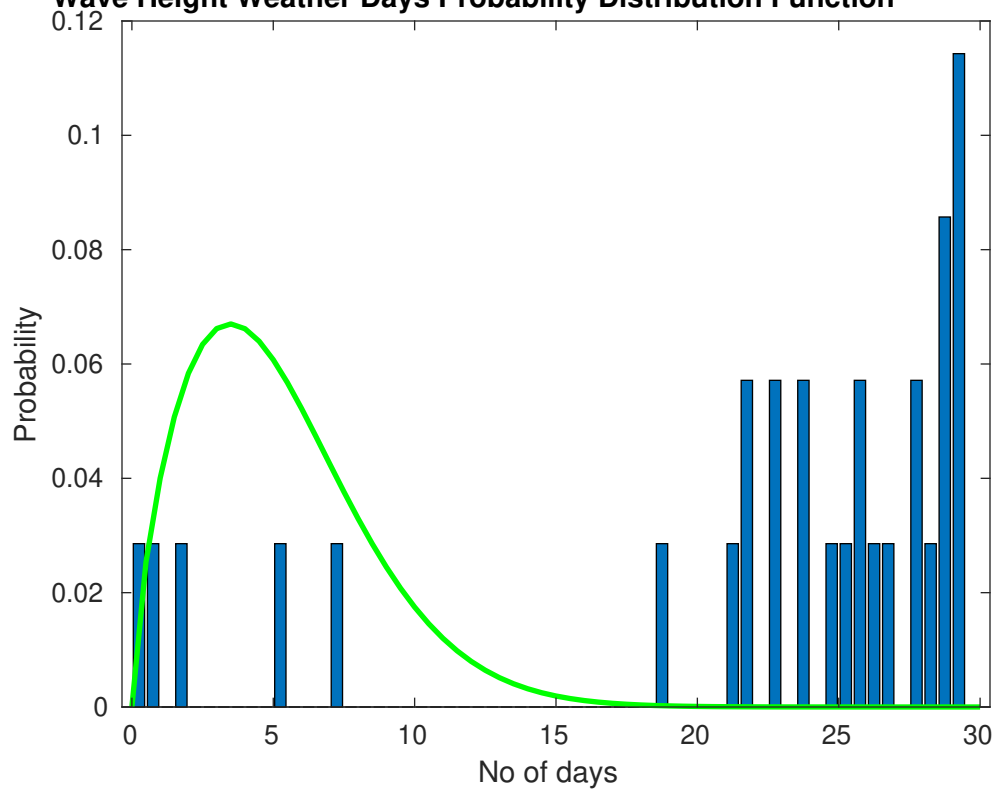
Current Speed > 1.0 knots Mean: 0.2 days Range: 0.0 - 0.7 days p50:1 days p75:1 days p90:1 days

Current Speed > 1.5 knots Mean: 0.0 days Range: 0.0 - 0.0 days p50:1 days p75:1 days p90:1 days

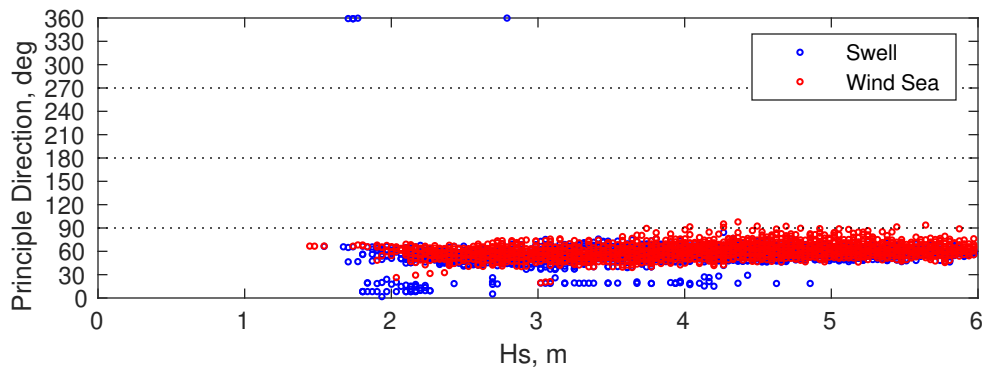
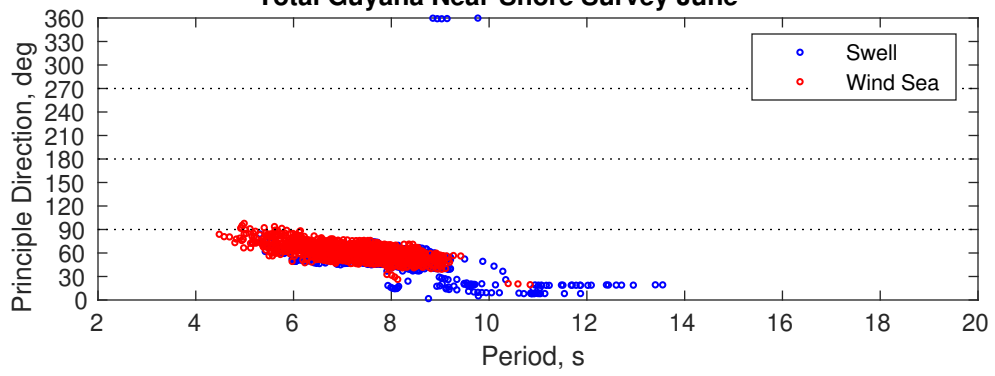
### Severe Storms

Severe storms with gale force winds and extreme waves are not expected during this month.

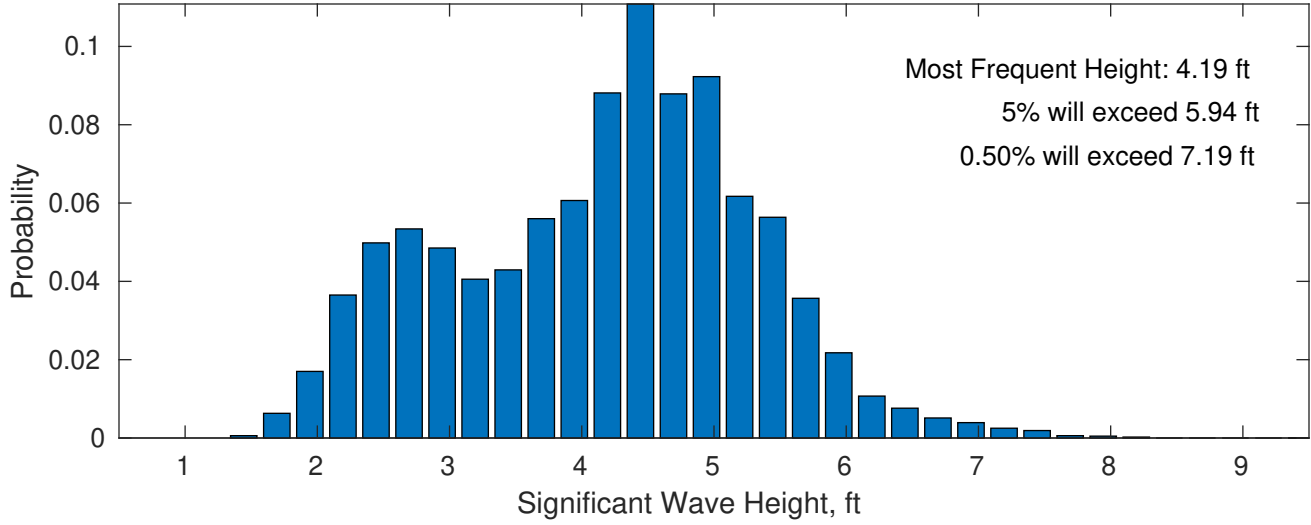
**Wave Height Weather Days Probability Distribution Function**



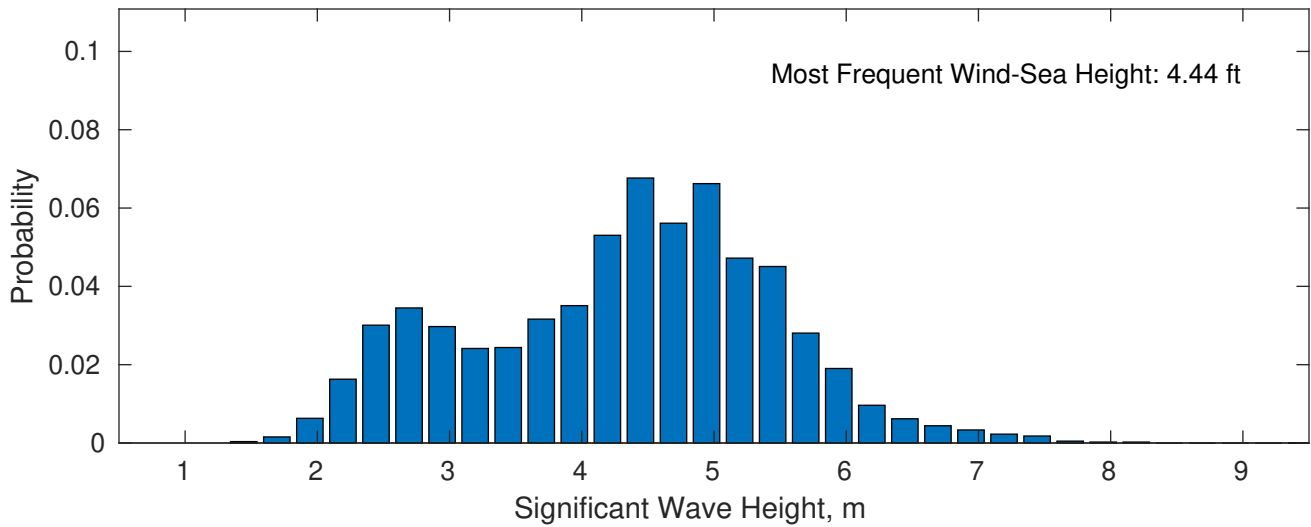
Total Guyana Near-Shore Survey June



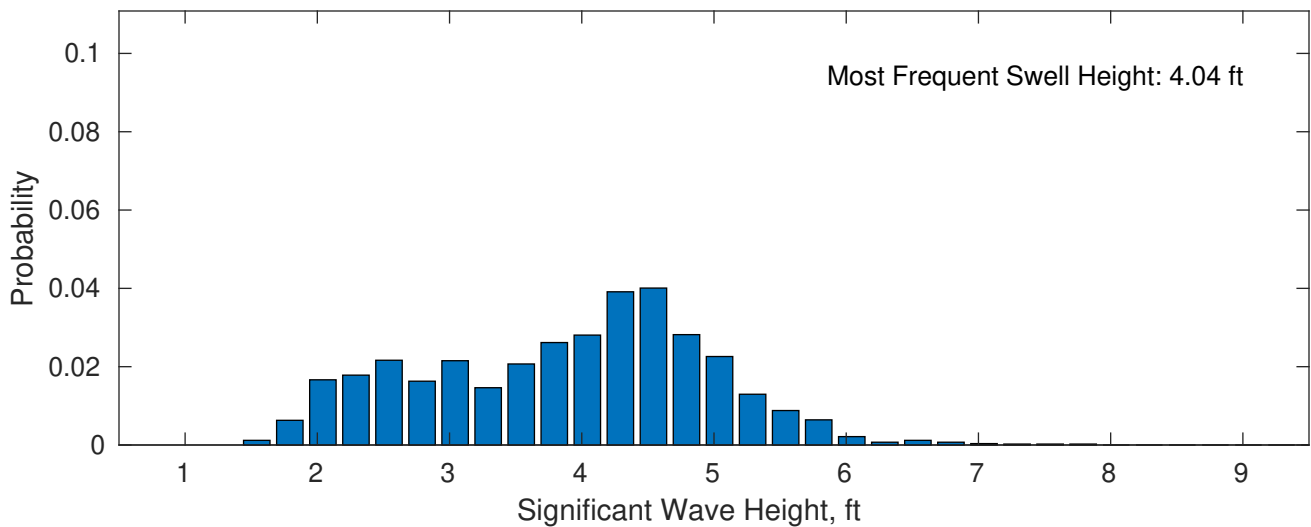
**June Wave Height PDF: 1979 - 2015**



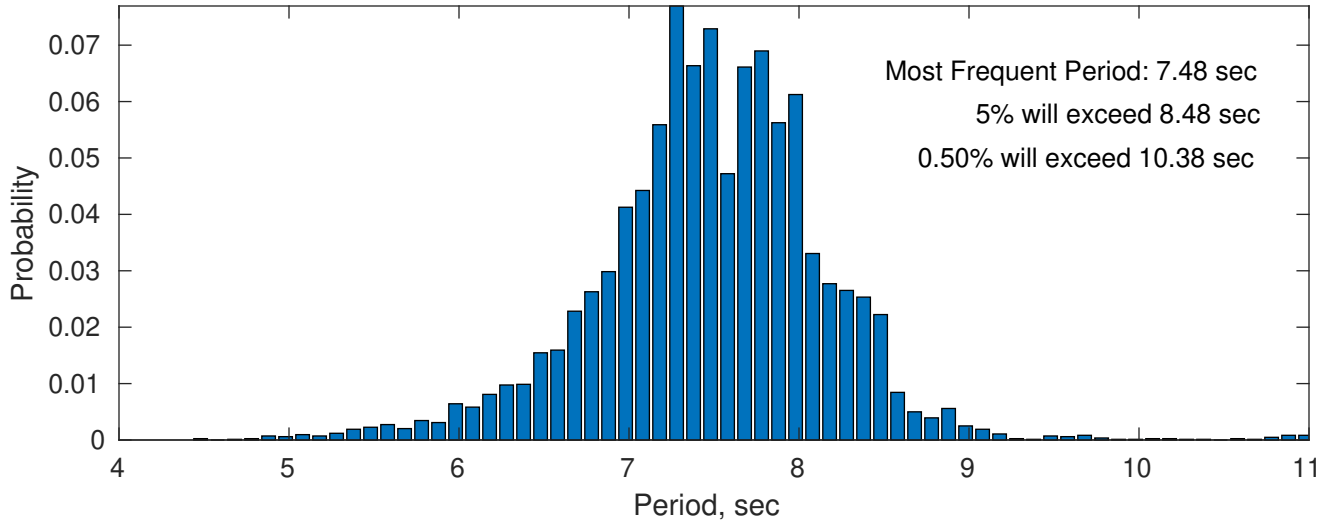
**Wind-Sea: 64.50%**



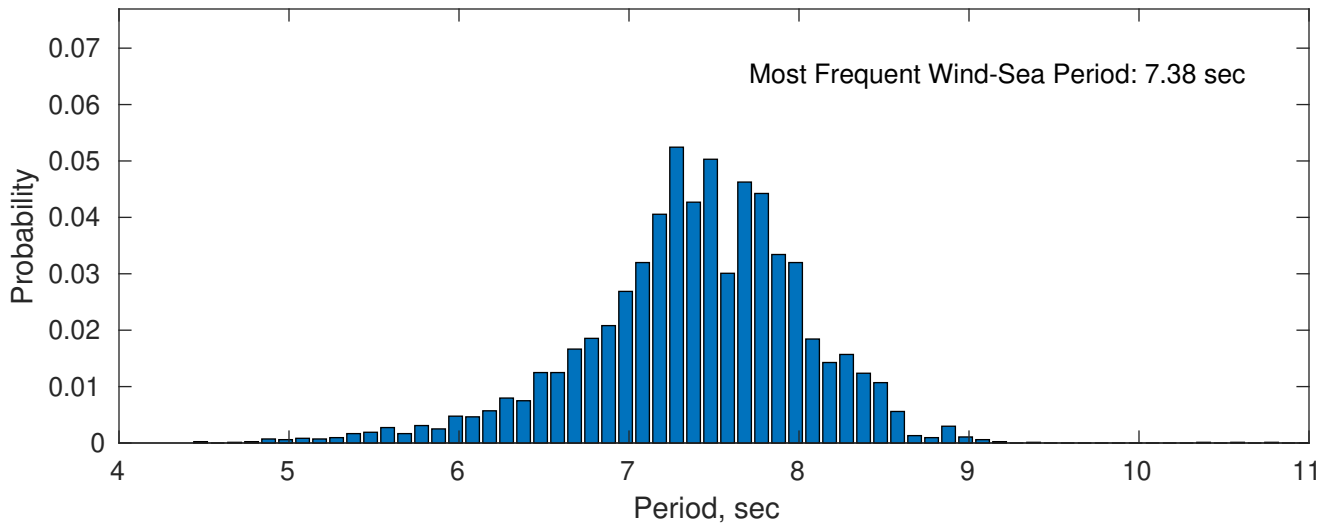
**Swell: 35.50%**



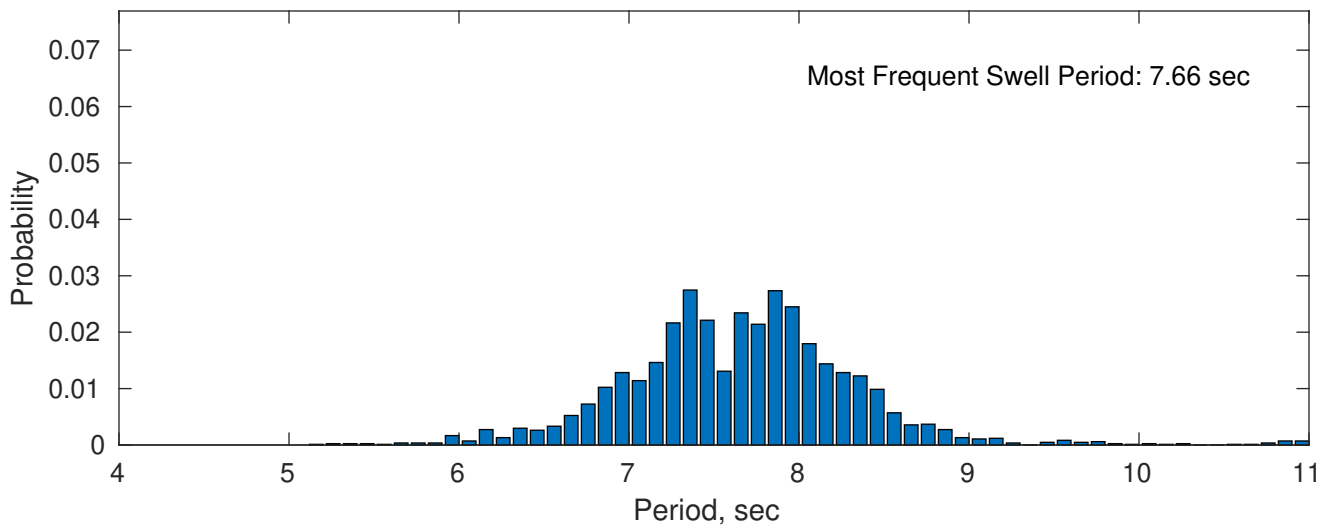
**June Peak Wave Period PDF: 1979 - 2015**



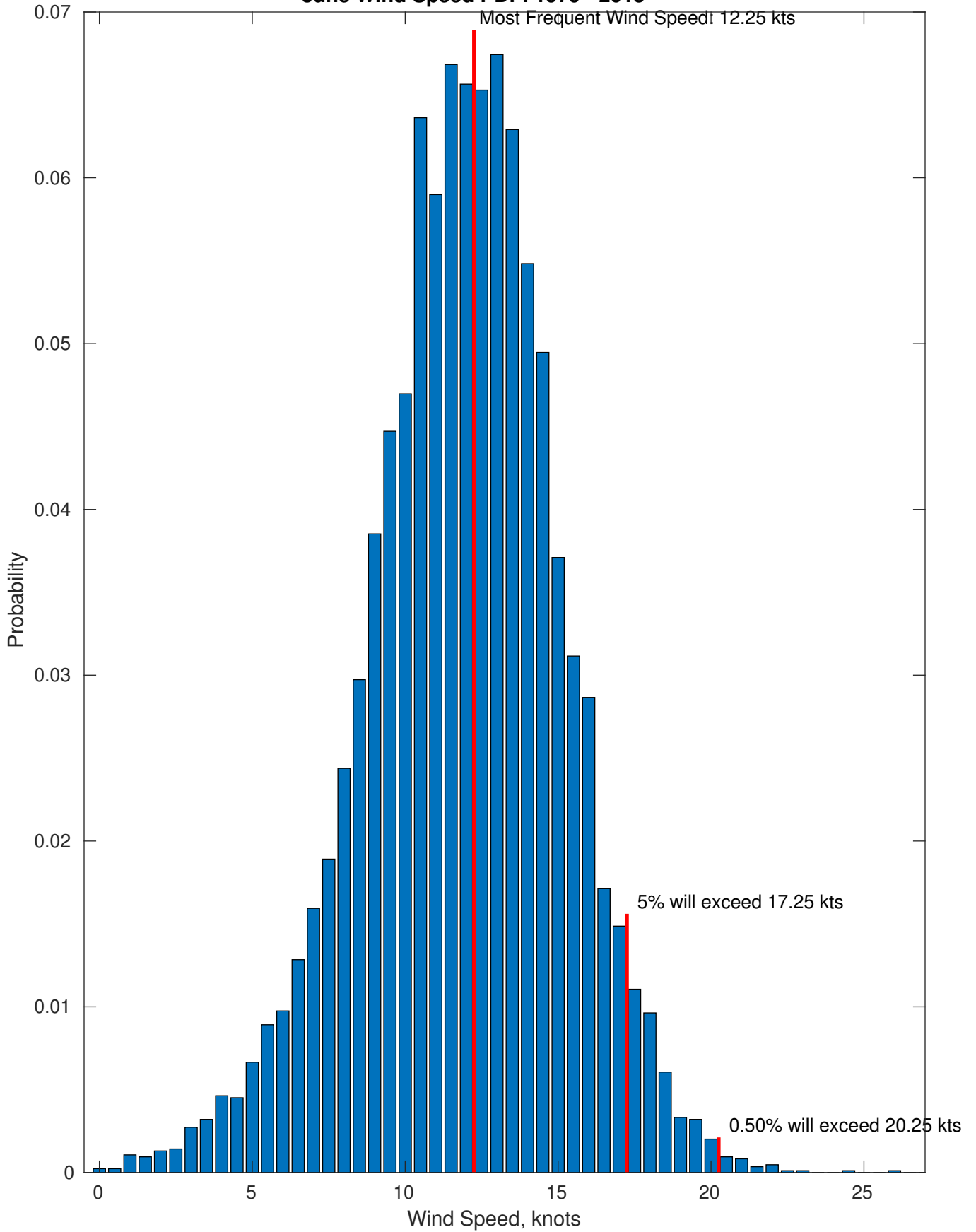
**Wind-Sea: 64.50%**



**Swell: 35.50%**



### June Wind Speed PDF: 1979 - 2015

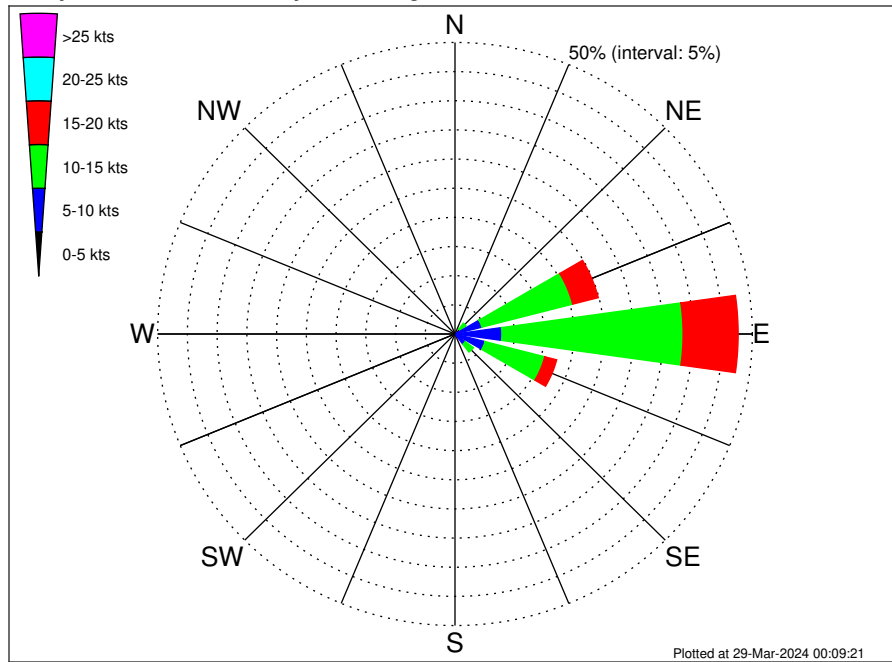








Total Guyana Near-Shore Survey Climatological Wind Rose for June: 1979 - 2015



Joint Frequency Distribution Table

	N	NNE	NE	ENE	E	ESE	SE	SSE	S	SSW	SW	WSW	W	WNW	NW	NNW	Total
calm	•	•	•	0.02	•	•	•	0.01	•	0.01	•	•	•	•	•	•	0.05
0 - 5 kts	0.06	0.02	0.18	0.24	0.43	0.25	0.31	0.18	0.12	0.07	0.06	0.04	•	•	0.01	0.02	1.99
5 - 10 kts	0.02	0.19	0.88	4.40	7.46	4.96	1.88	0.74	0.31	0.13	0.05	•	0.01	0.01	•	•	21.04
10 - 15 kts	•	0.10	1.26	15.78	30.47	10.38	1.70	0.39	0.11	0.01	•	•	•	•	•	•	60.20
15 - 20 kts	•	•	0.27	4.45	9.26	2.07	0.14	0.02	•	•	•	•	•	•	•	•	16.22
20 - 25 kts	•	•	0.01	0.18	0.27	0.02	0.01	•	•	•	•	•	•	•	•	•	0.50
25 - 30 kts	•	•	•	0.01	•	•	•	•	•	•	•	•	•	•	•	•	0.01
30 - 35 kts	•	•	•	•	•	•	•	•	•	•	•	•	•	•	•	•	•
35 - 40 kts	•	•	•	•	•	•	•	•	•	•	•	•	•	•	•	•	•
40 - 45 kts	•	•	•	•	•	•	•	•	•	•	•	•	•	•	•	•	•
45 - 50 kts	•	•	•	•	•	•	•	•	•	•	•	•	•	•	•	•	•
Total	0.08	0.31	2.60	25.08	47.89	17.68	4.04	1.34	0.54	0.23	0.11	0.04	0.01	0.01	0.01	0.02	100.00