

Total Guyana Near-Shore Survey - March

Latitude: 7.59 N Longitude: 58.11 W

Weather Days

Wave Height > 4.0 ft Mean: 20.7 days Range: 9.8 - 30.0 days p50:29.5 days p75:28 days p90:7.5 days

Wave Height > 5.0 ft Mean: 14.6 days Range: 3.7 - 25.5 days p50:25.5 days p75:22 days p90:16 days

Wave Height > 6.0 ft Mean: 7.4 days Range: 0.0 - 14.8 days p50:16.5 days p75:9 days p90:5.5 days

Wind Speed > 15.0 knots Mean: 8.0 days Range: 4.4 - 11.5 days p50:8 days p75:5.5 days p90:3.5 days

Wind Speed > 20.0 knots Mean: 0.1 days Range: 0.0 - 0.2 days p50:0.5 days p75:0.5 days p90:0.5 days

Wind Speed > 25.0 knots Mean: 0.0 days Range: 0.0 - 0.0 days p50:0.5 days p75:0.5 days p90:0.5 days

Working Window

Wave Height < 4.0 ft
A 1 day or longer window will statistically occur 0.9 times per month
A 2 day or longer window will statistically occur 0.7 times per month
A 3 day or longer window will statistically occur 0.6 times per month

Wave Height < 5.0 ft
A 1 day or longer window will statistically occur 1.9 times per month
A 2 day or longer window will statistically occur 1.3 times per month
A 3 day or longer window will statistically occur 0.8 times per month

Wave Height < 6.0 ft
A 1 day or longer window will statistically occur 2.7 times per month
A 2 day or longer window will statistically occur 2.1 times per month
A 3 day or longer window will statistically occur 1.9 times per month

Waves

Mean Height: 4 - 6 ft

The wave heights will occasionally reach 8 - 10 ft, but rarely higher.

Mean Period: 8 - 10 sec

The wave periods will occasionally reach 14 - 16 sec, but rarely longer.

Principle Direction, from: ENE

WindSea/Swell: 82% / 18%

Winds

Mean Speed: 10 - 15 kts

The winds will occasionally reach 15 - 20 kts, but rarely greater.

Principle Direction, from: ENE

Currents

Mean Speed: 0.25-0.50 kts

The currents will occasionally reach 0.75-1.00 kts, but rarely greater.

Principle Direction, to: NW

Weather Days

Current Speed > 0.5 knots Mean: 14.8 days Range: 9.0 - 20.6 days p50:17 days p75:14 days p90:5 days

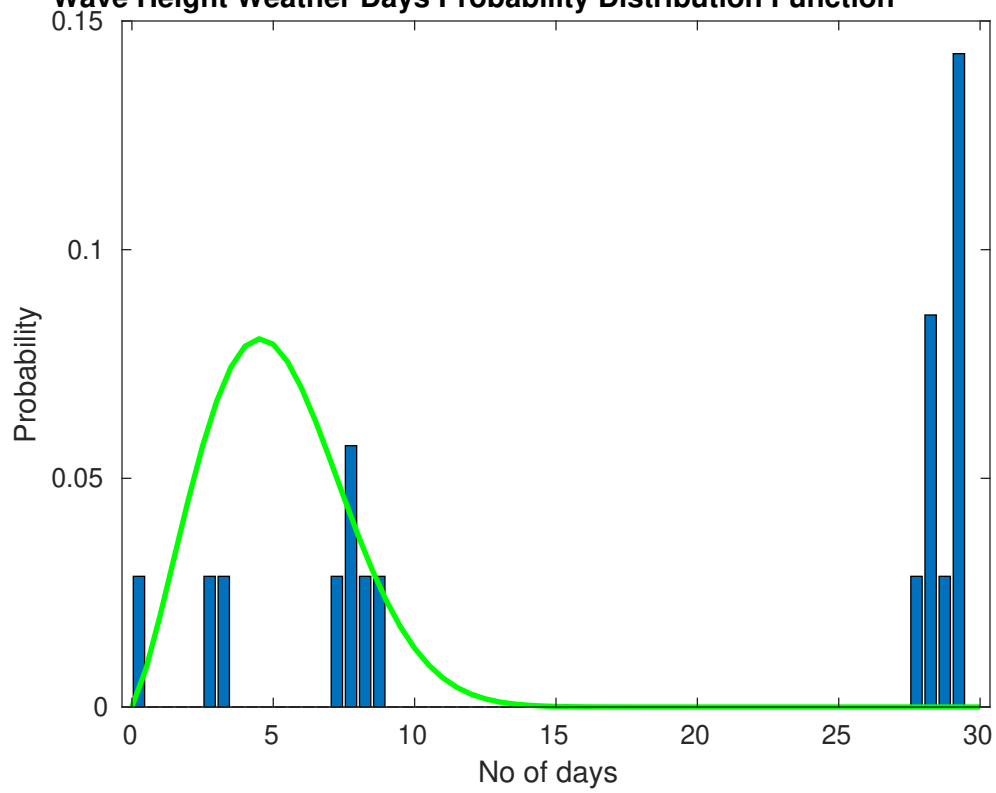
Current Speed > 1.0 knots Mean: 0.0 days Range: 0.0 - 0.0 days p50:1 days p75:1 days p90:1 days

Current Speed > 1.5 knots Mean: 0.0 days Range: 0.0 - 0.0 days p50:1 days p75:1 days p90:1 days

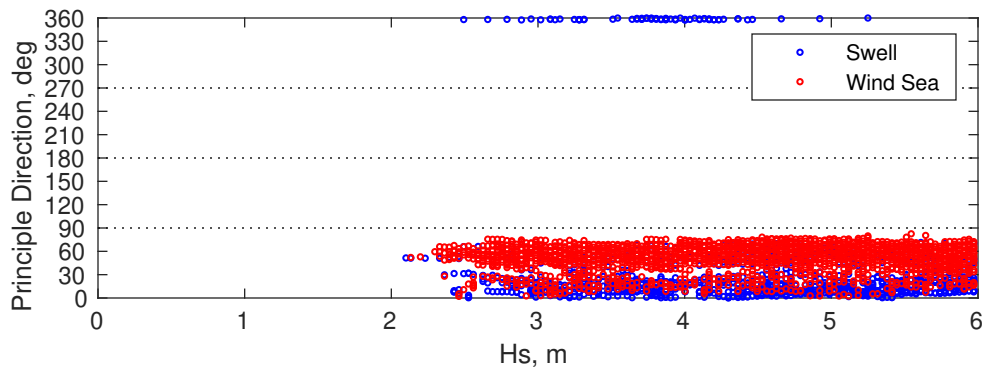
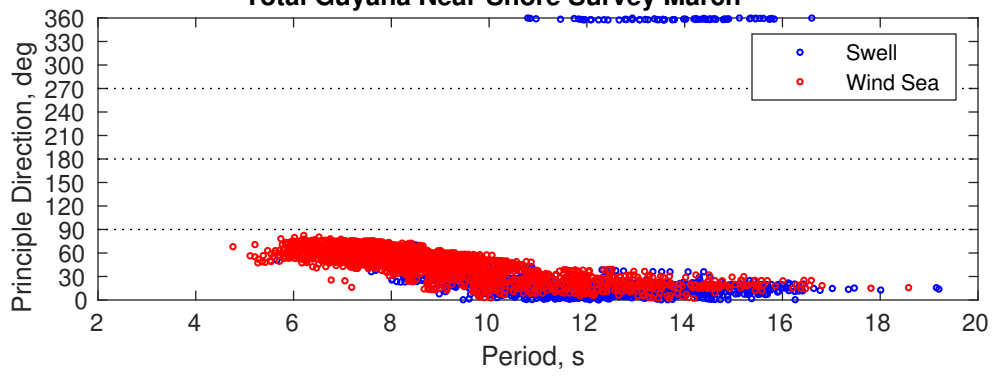
Severe Storms

Severe storms with gale force winds and extreme waves are not expected during this month.

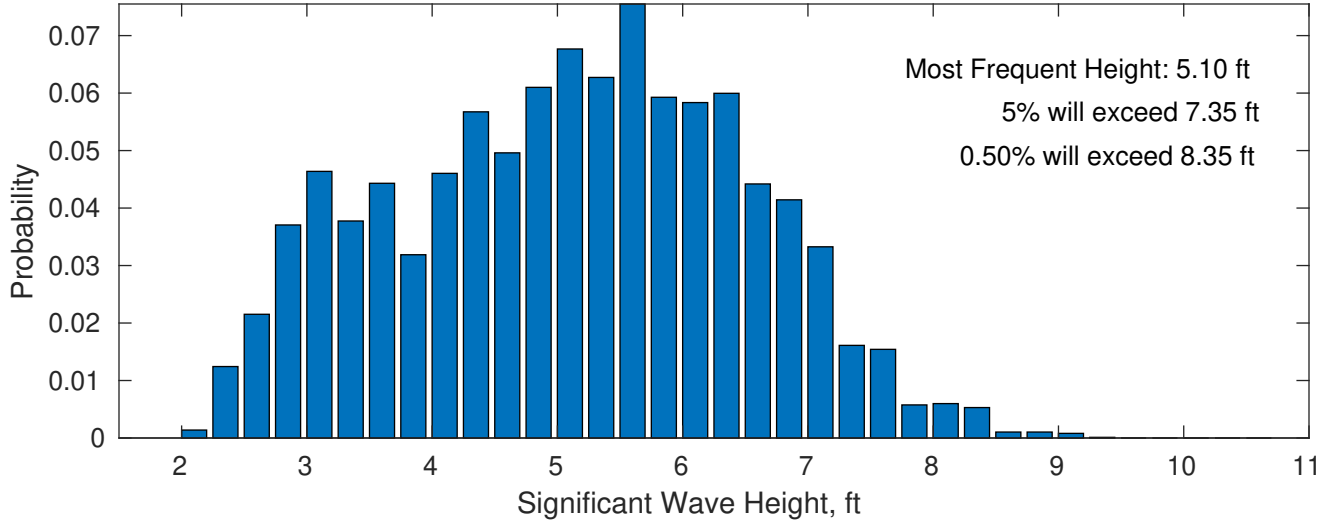
Wave Height Weather Days Probability Distribution Function



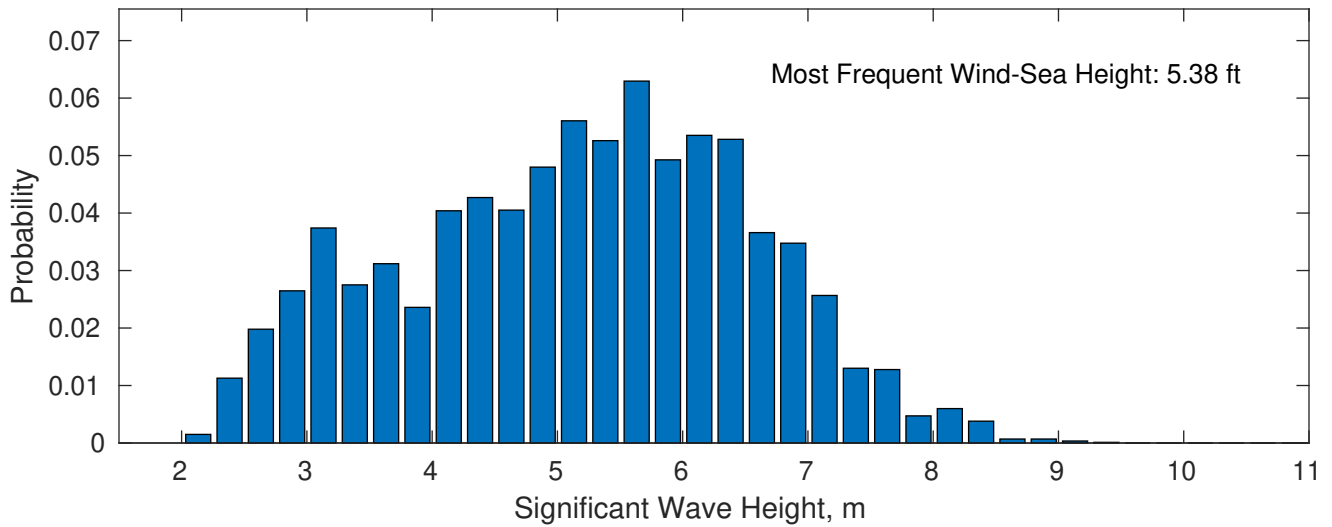
Total Guyana Near-Shore Survey March



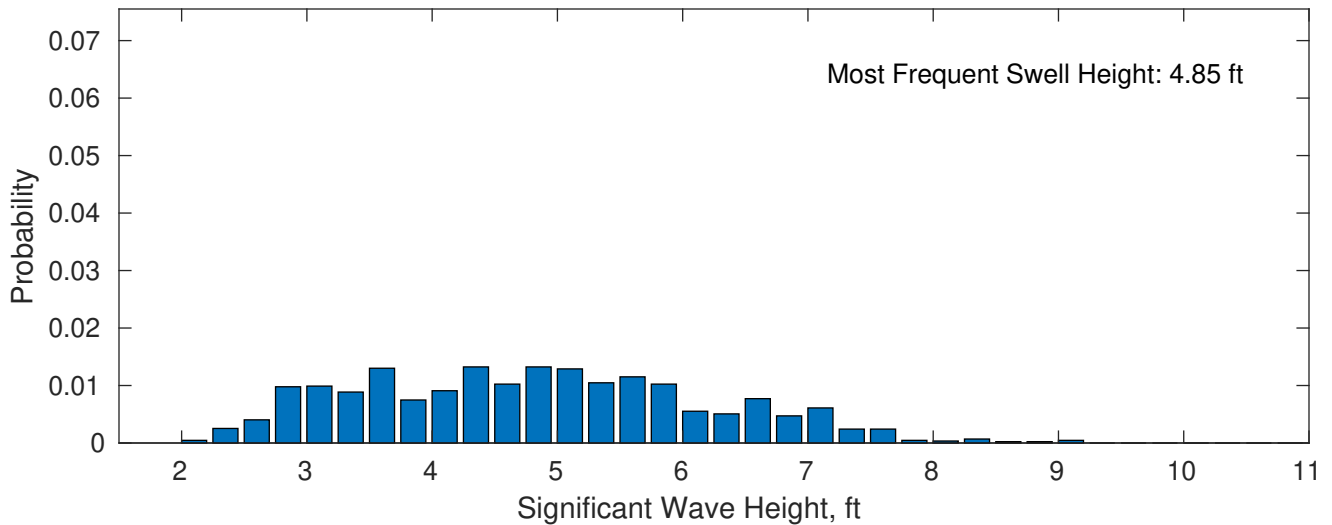
March Wave Height PDF: 1979 - 2015



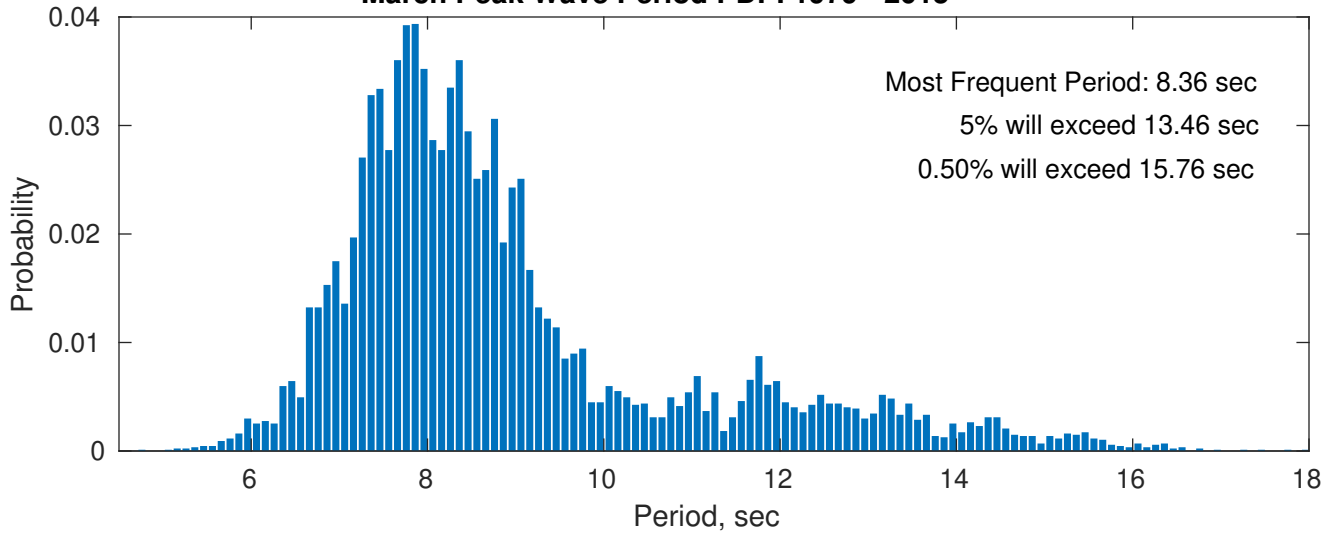
Wind-Sea: 81.67%



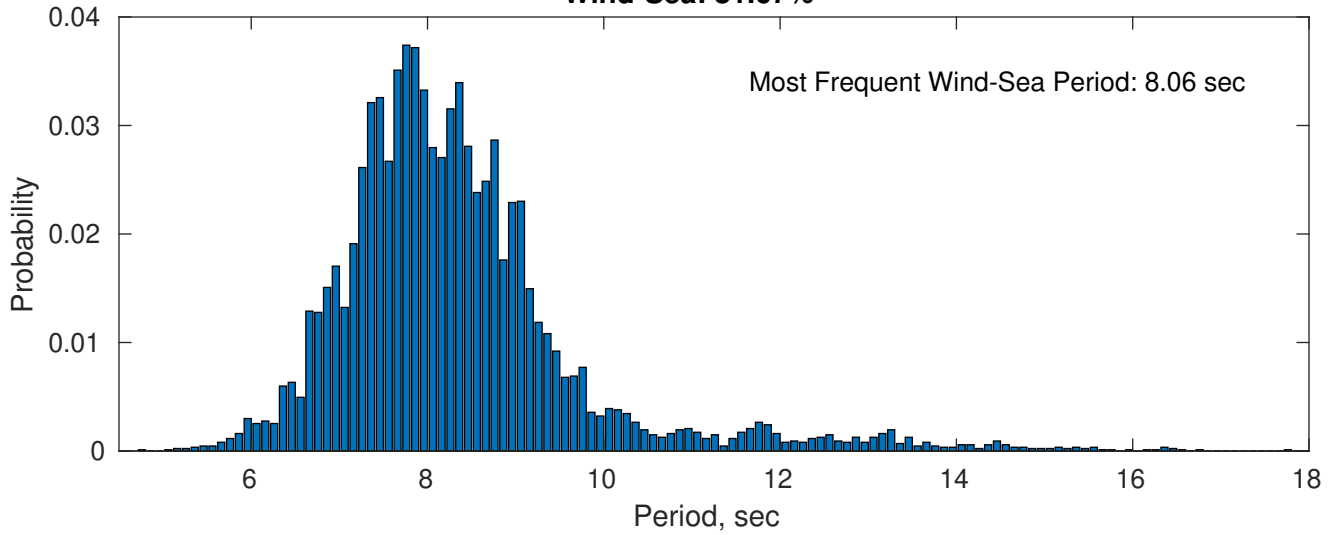
Swell: 18.33%



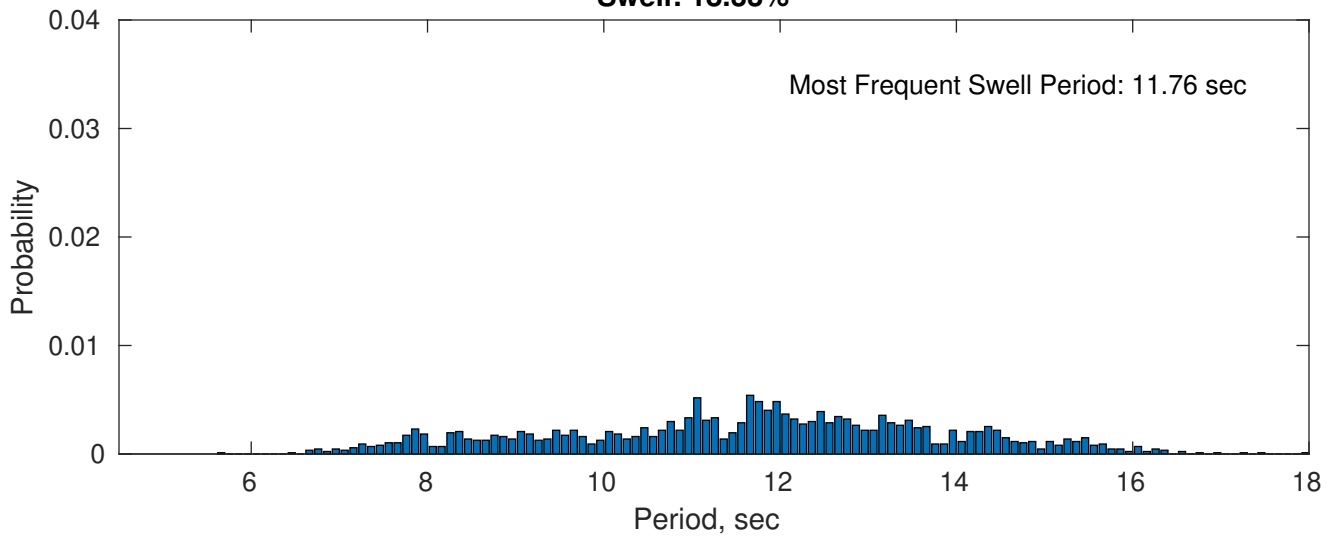
March Peak Wave Period PDF: 1979 - 2015



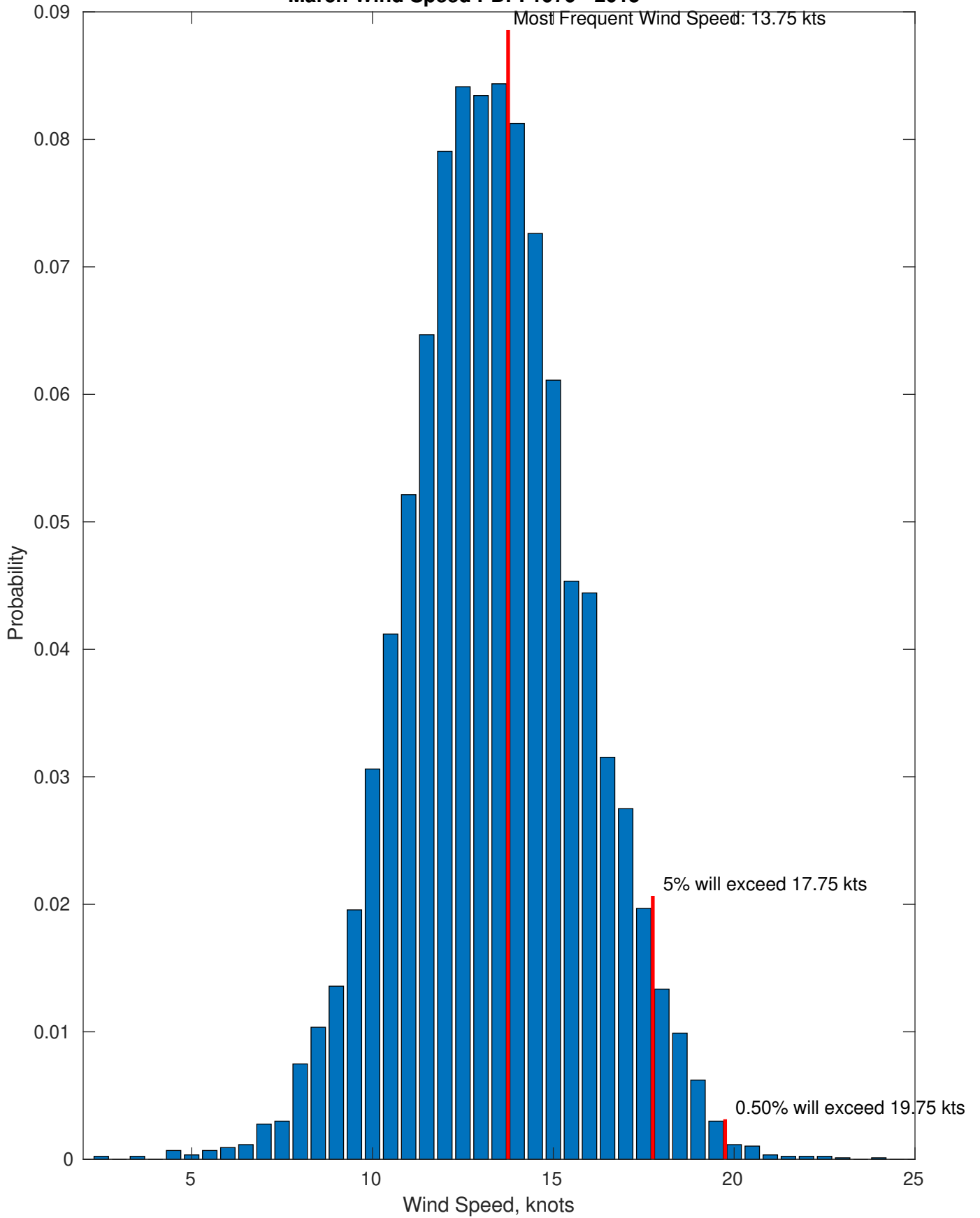
Wind-Sea: 81.67%



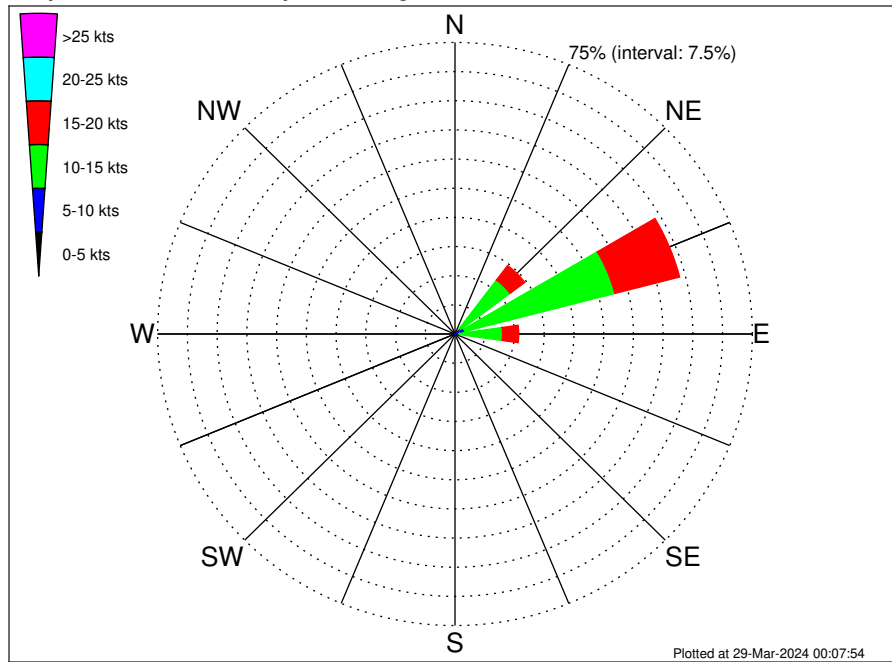
Swell: 18.33%



March Wind Speed PDF: 1979 - 2015



Total Guyana Near-Shore Survey Climatological Wind Rose for March: 1979 - 2015



Joint Frequency Distribution Table

	N	NNE	NE	ENE	E	ESE	SE	SSE	S	SSW	SW	WSW	W	WNW	NW	NNW	Total
calm	•	•	•	•	•	•	•	•	•	•	•	•	•	•	•	•	•
0 - 5 kts	•	•	0.03	0.05	0.02	0.01	•	•	•	•	•	•	•	•	•	•	0.12
5 - 10 kts	0.08	0.30	1.78	2.54	1.05	0.18	0.01	0.03	•	•	•	•	•	•	•	•	5.98
10 - 15 kts	0.18	1.06	15.57	39.07	10.93	0.48	•	0.01	•	•	•	•	•	•	•	0.03	67.35
15 - 20 kts	0.09	0.25	4.66	16.87	4.07	0.25	•	•	•	•	•	•	•	•	•	•	26.21
20 - 25 kts	•	0.01	0.03	0.29	0.01	•	•	•	•	•	•	•	•	•	•	•	0.35
25 - 30 kts	•	•	•	•	•	•	•	•	•	•	•	•	•	•	•	•	•
30 - 35 kts	•	•	•	•	•	•	•	•	•	•	•	•	•	•	•	•	•
35 - 40 kts	•	•	•	•	•	•	•	•	•	•	•	•	•	•	•	•	•
40 - 45 kts	•	•	•	•	•	•	•	•	•	•	•	•	•	•	•	•	•
45 - 50 kts	•	•	•	•	•	•	•	•	•	•	•	•	•	•	•	•	•
Total	0.36	1.62	22.09	58.82	16.09	0.93	0.01	0.05	•	•	•	•	•	•	•	0.03	100.00