

## Total Guyana Near-Shore Survey - May

Latitude: 7.59 N Longitude: 58.11 W

### Weather Days

Wave Height > 4.0 ft Mean: 20.4 days Range: 8.2 - 30.0 days p50:29 days p75:26.5 days p90:6 days

Wave Height > 5.0 ft Mean: 11.9 days Range: 2.9 - 20.8 days p50:20.5 days p75:15 days p90:7.5 days

Wave Height > 6.0 ft Mean: 3.9 days Range: 0.0 - 8.0 days p50:8.5 days p75:4 days p90:0.5 days

Wind Speed > 15.0 knots Mean: 6.6 days Range: 3.3 - 9.8 days p50:6.5 days p75:4 days p90:3 days

Wind Speed > 20.0 knots Mean: 0.2 days Range: 0.0 - 0.4 days p50:0.5 days p75:0.5 days p90:0.5 days

Wind Speed > 25.0 knots Mean: 0.0 days Range: 0.0 - 0.0 days p50:0.5 days p75:0.5 days p90:0.5 days

### Working Window

Wave Height < 4.0 ft  
A 1 day or longer window will statistically occur 1.1 times per month  
A 2 day or longer window will statistically occur 0.7 times per month  
A 3 day or longer window will statistically occur 0.6 times per month

Wave Height < 5.0 ft  
A 1 day or longer window will statistically occur 2.6 times per month  
A 2 day or longer window will statistically occur 2.0 times per month  
A 3 day or longer window will statistically occur 1.3 times per month

Wave Height < 6.0 ft  
A 1 day or longer window will statistically occur 2.7 times per month  
A 2 day or longer window will statistically occur 2.1 times per month  
A 3 day or longer window will statistically occur 1.9 times per month

### Waves

Mean Height: 4 - 6 ft

The wave heights will occasionally reach 6 - 8 ft, but rarely higher.

Mean Period: 6 - 8 sec

The wave periods will occasionally reach 12 - 14 sec, but rarely longer.

Principle Direction, from: ENE

WindSea/Swell: 79% / 21%

### Winds

Mean Speed: 10 - 15 kts

The winds will occasionally reach 20 - 25 kts, but rarely greater.

Principle Direction, from: E

### Currents

Mean Speed: 0.50-0.75 kts

The currents will occasionally reach 0.75-1.00 kts, but rarely greater.

Principle Direction, to: NW

### Weather Days

Current Speed > 0.5 knots Mean: 22.5 days Range: 18.3 - 26.8 days p50:24 days p75:20 days p90:17 days

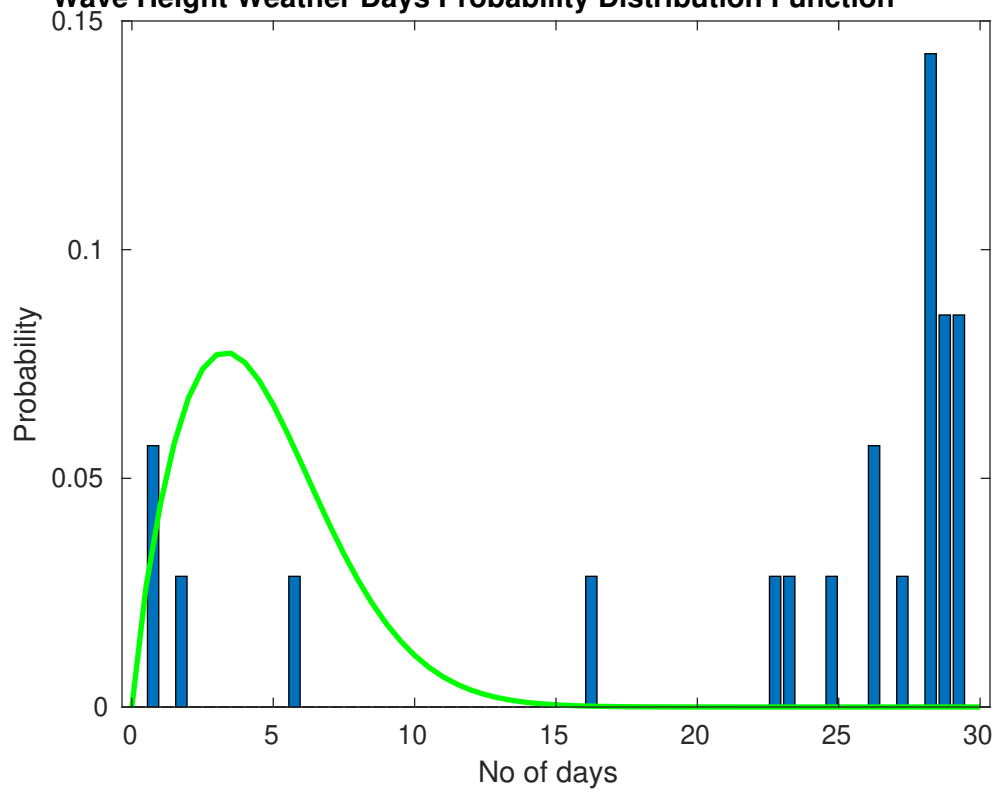
Current Speed > 1.0 knots Mean: 0.0 days Range: 0.0 - 0.0 days p50:1 days p75:1 days p90:1 days

Current Speed > 1.5 knots Mean: 0.0 days Range: 0.0 - 0.0 days p50:1 days p75:1 days p90:1 days

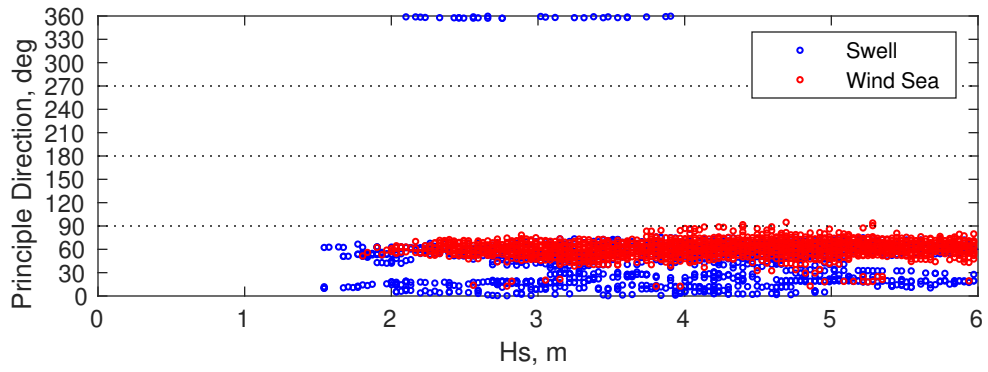
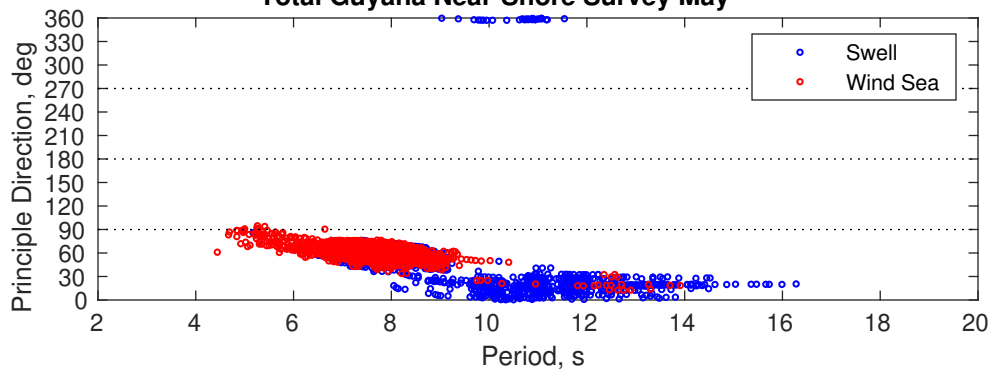
### Severe Storms

Severe storms with gale force winds and extreme waves are not expected during this month.

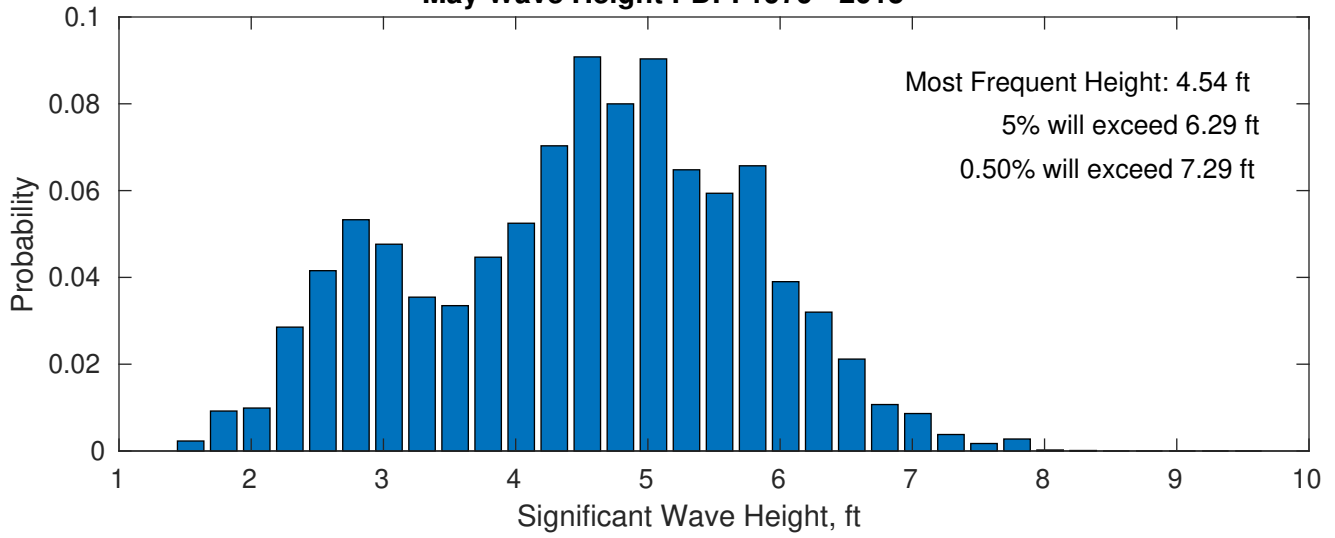
**Wave Height Weather Days Probability Distribution Function**



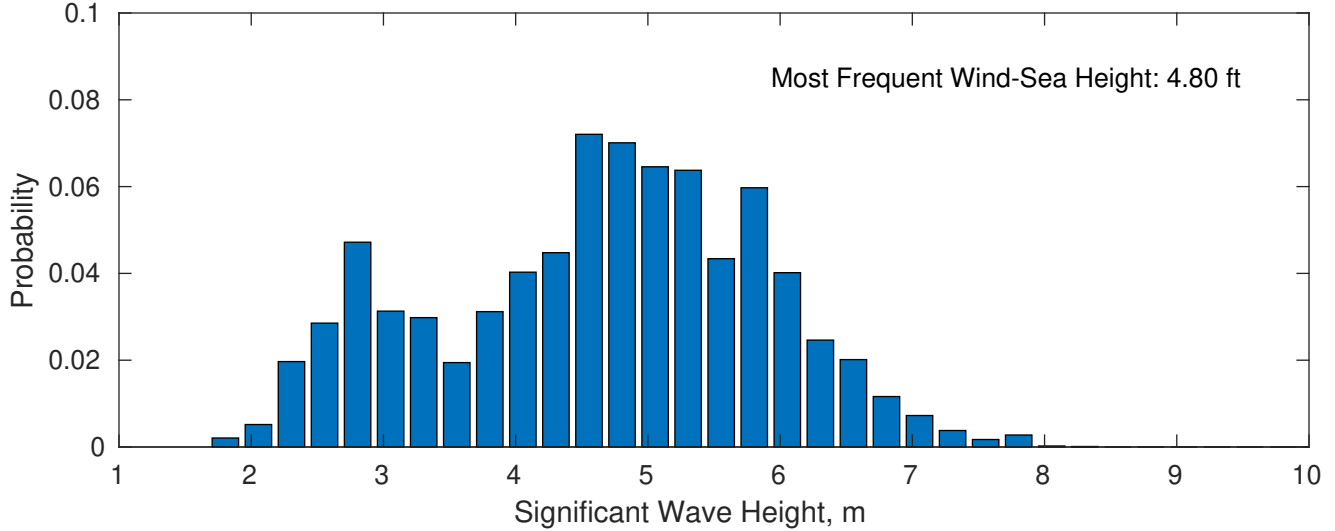
Total Guyana Near-Shore Survey May



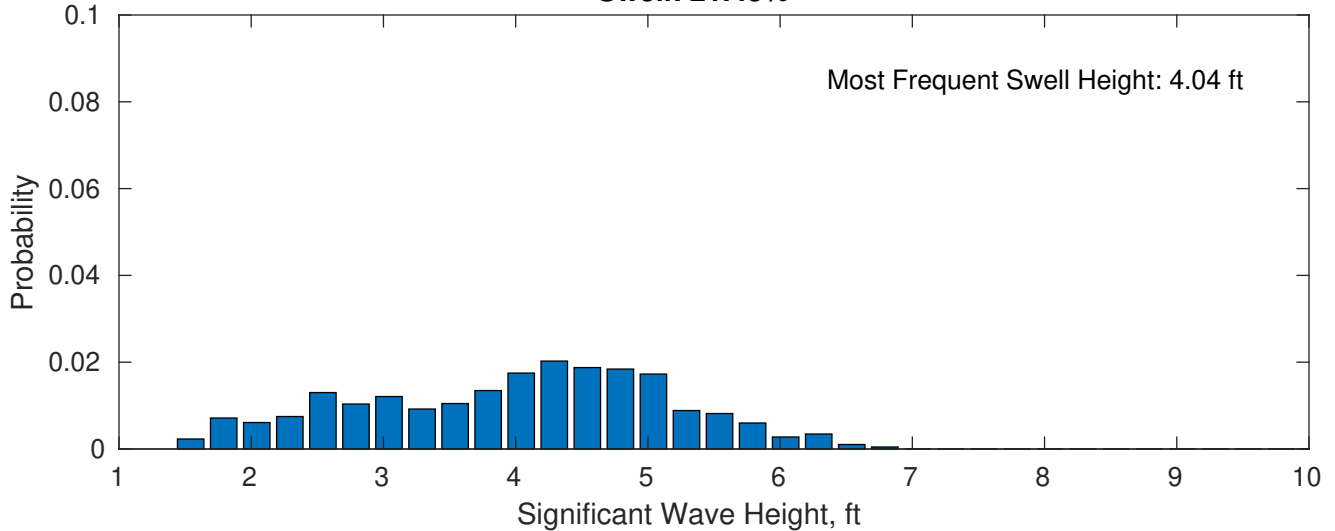
**May Wave Height PDF: 1979 - 2015**



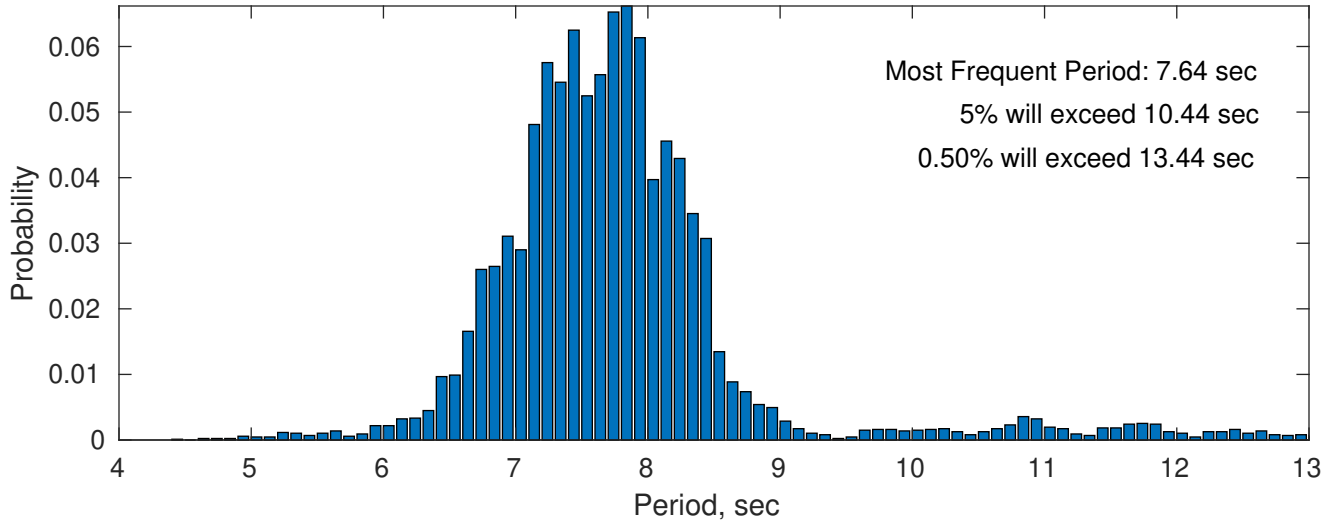
**Wind-Sea: 78.55%**



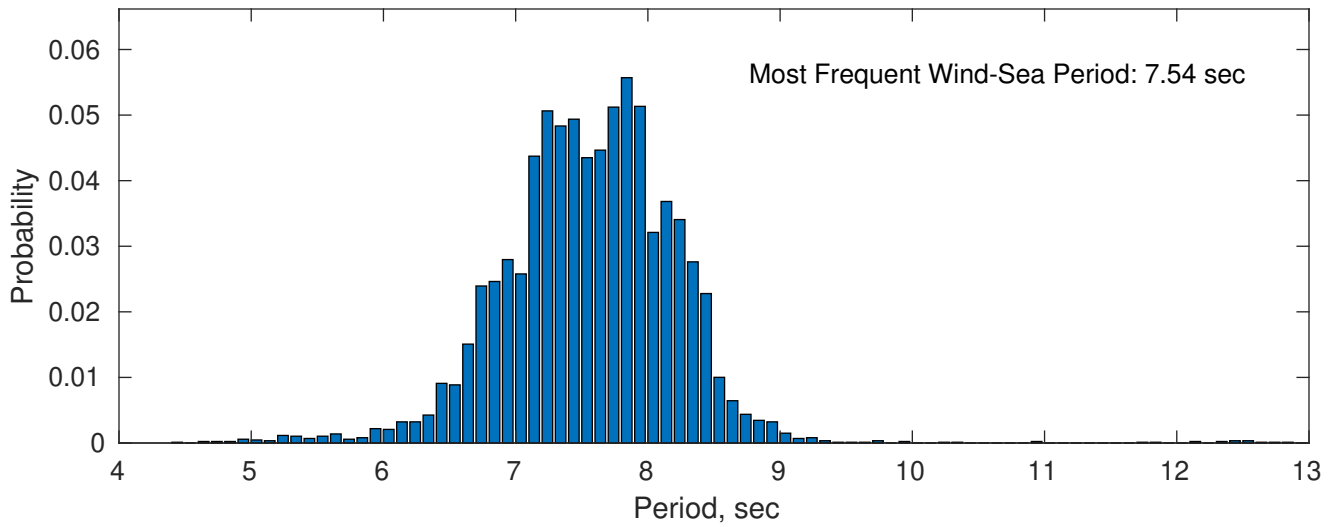
**Swell: 21.45%**



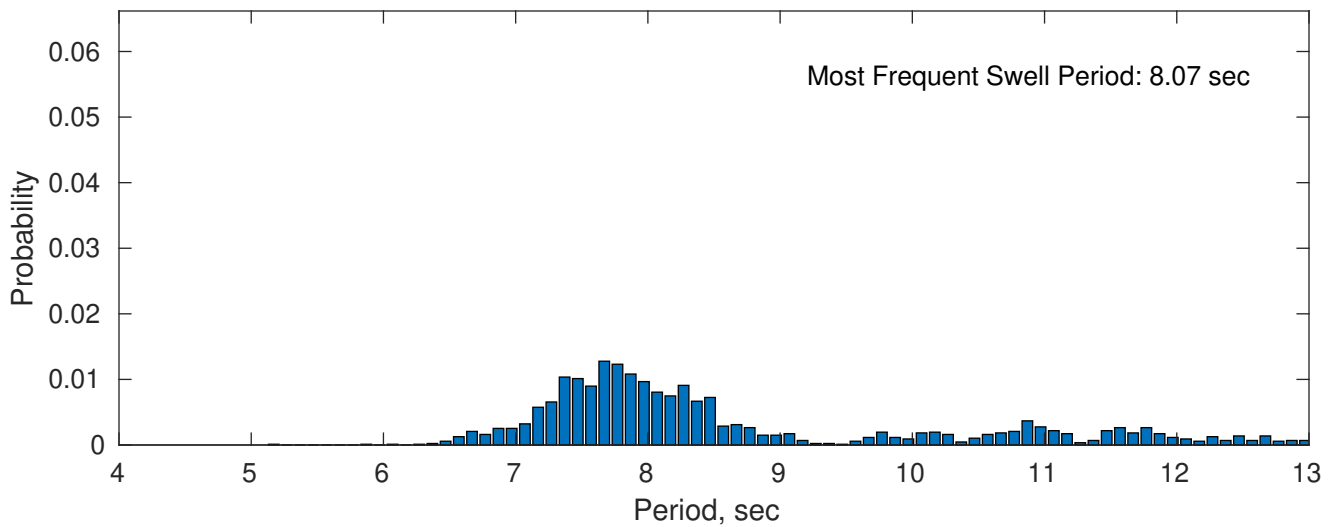
### May Peak Wave Period PDF: 1979 - 2015



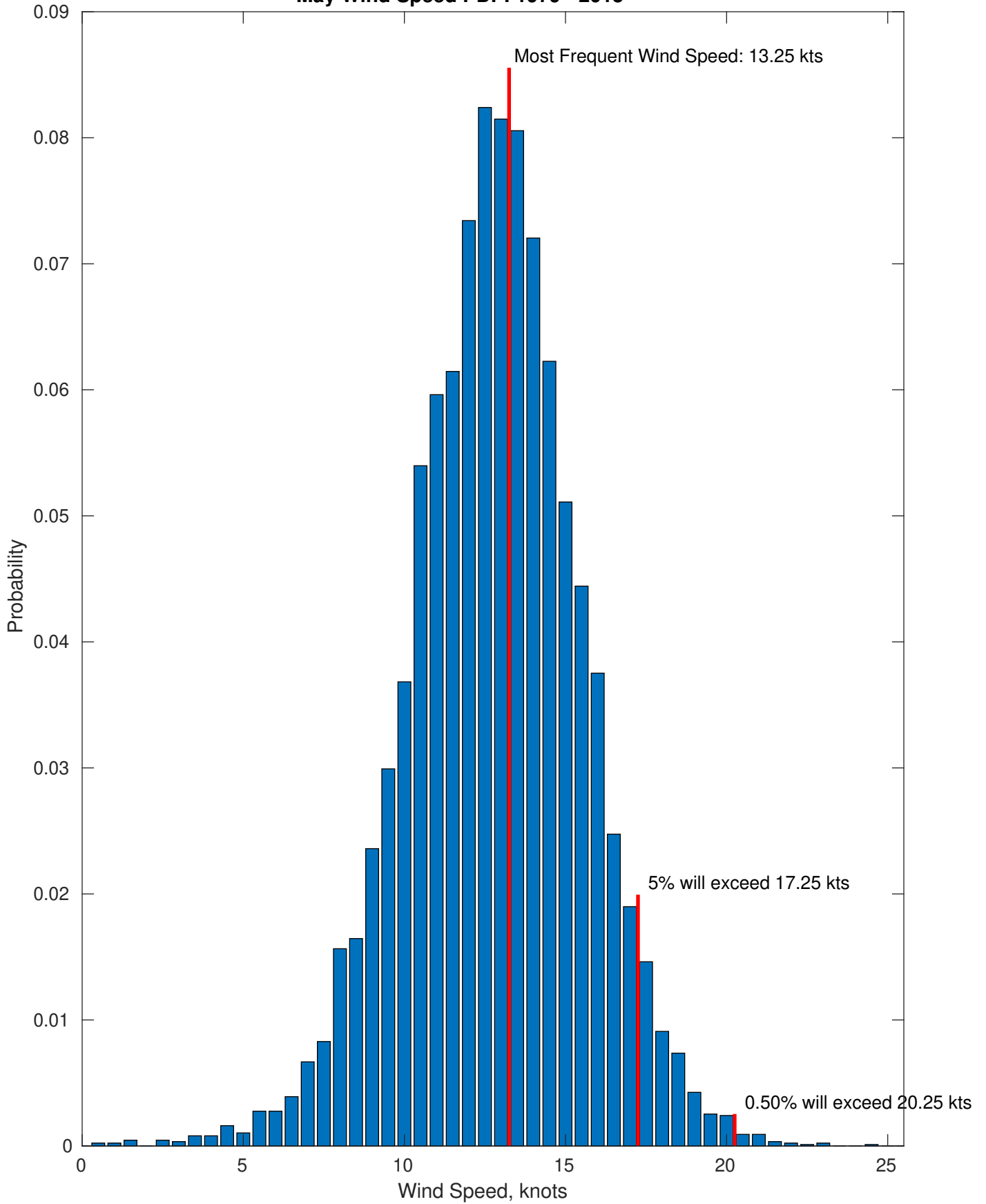
### Wind-Sea: 78.55%



### Swell: 21.45%



May Wind Speed PDF: 1979 - 2015

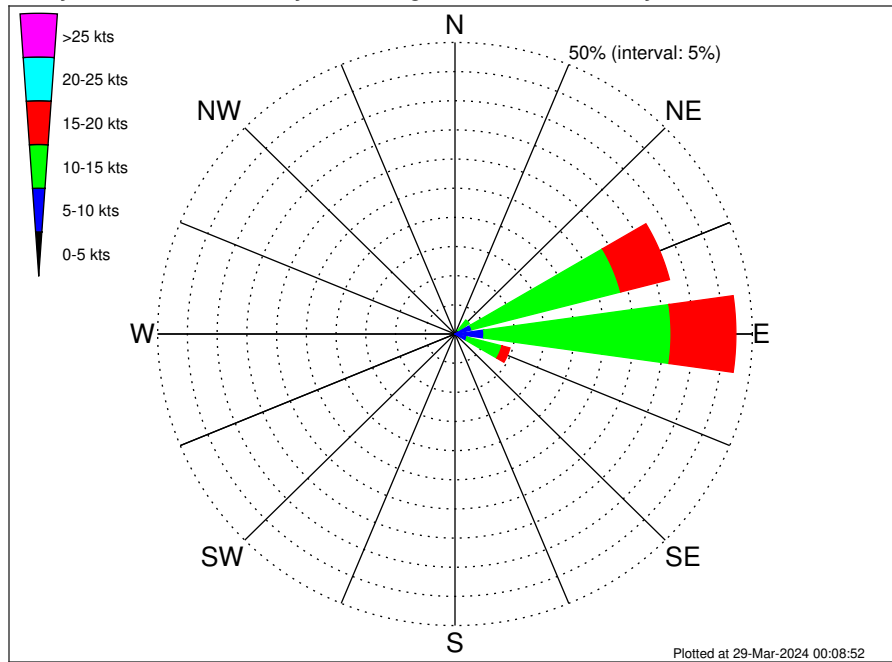








Total Guyana Near-Shore Survey Climatological Wind Rose for May: 1979 - 2015



Joint Frequency Distribution Table

	N	NNE	NE	ENE	E	ESE	SE	SSE	S	SSW	SW	WSW	W	WNW	NW	NNW	Total
calm	•	•	0.01	•	•	•	•	•	•	•	•	•	•	0.01	•	•	0.02
0 - 5 kts	•	0.02	•	0.05	0.12	0.10	0.08	0.01	0.03	0.01	•	0.02	0.01	•	0.01	•	0.47
5 - 10 kts	0.02	0.05	0.77	2.89	4.75	1.99	0.44	0.08	0.02	•	0.02	0.05	0.01	0.01	•	•	11.11
10 - 15 kts	•	0.03	2.22	25.85	31.47	6.05	0.62	0.08	0.01	•	0.01	0.05	0.01	•	•	•	66.41
15 - 20 kts	•	•	0.64	8.47	10.90	1.39	0.05	0.01	•	•	•	•	•	•	•	•	21.46
20 - 25 kts	•	•	•	0.21	0.30	•	0.02	•	•	•	•	•	•	•	•	•	0.53
25 - 30 kts	•	•	•	•	•	•	•	•	•	•	•	•	•	•	•	•	•
30 - 35 kts	•	•	•	•	•	•	•	•	•	•	•	•	•	•	•	•	•
35 - 40 kts	•	•	•	•	•	•	•	•	•	•	•	•	•	•	•	•	•
40 - 45 kts	•	•	•	•	•	•	•	•	•	•	•	•	•	•	•	•	•
45 - 50 kts	•	•	•	•	•	•	•	•	•	•	•	•	•	•	•	•	•
Total	0.02	0.10	3.65	37.46	47.53	9.54	1.21	0.18	0.07	0.01	0.03	0.12	0.03	0.02	0.01	•	100.00