

Total Guyana Near-Shore Survey - November

Latitude: 7.59 N Longitude: 58.11 W

Weather Days

Wave Height > 4.0 ft Mean: 15.5 days Range: 3.8 - 27.1 days p50:27 days p75:23.5 days p90:5 days

Wave Height > 5.0 ft Mean: 6.8 days Range: 0.0 - 13.8 days p50:15 days p75:12 days p90:9.5 days

Wave Height > 6.0 ft Mean: 1.7 days Range: 0.0 - 4.6 days p50:5 days p75:3 days p90:2 days

Wind Speed > 15.0 knots Mean: 5.5 days Range: 3.1 - 8.0 days p50:5.5 days p75:3.5 days p90:3 days

Wind Speed > 20.0 knots Mean: 0.2 days Range: 0.0 - 0.6 days p50:0.5 days p75:0.5 days p90:0.5 days

Wind Speed > 25.0 knots Mean: 0.0 days Range: 0.0 - 0.0 days p50:0.5 days p75:0.5 days p90:0.5 days

Working Window

Wave Height < 4.0 ft
A 1 day or longer window will statistically occur 1.5 times per month
A 2 day or longer window will statistically occur 0.9 times per month
A 3 day or longer window will statistically occur 0.6 times per month

Wave Height < 5.0 ft
A 1 day or longer window will statistically occur 3.3 times per month
A 2 day or longer window will statistically occur 2.4 times per month
A 3 day or longer window will statistically occur 1.9 times per month

Wave Height < 6.0 ft
A 1 day or longer window will statistically occur 2.7 times per month
A 2 day or longer window will statistically occur 2.3 times per month
A 3 day or longer window will statistically occur 2.0 times per month

Waves

Mean Height: 4 - 6 ft

The wave heights will occasionally reach 6 - 8 ft, but rarely higher.

Mean Period: 8 - 10 sec

The wave periods will occasionally reach 18 - 20 sec, but rarely longer.

Principle Direction, from: ENE

WindSea/Swell: 53% / 47%

Winds

Mean Speed: 10 - 15 kts

The winds will occasionally reach 20 - 25 kts, but rarely greater.

Principle Direction, from: ENE

Currents

Mean Speed: 0.25-0.50 kts

The currents will occasionally reach 0.75-1.00 kts, but rarely greater.

Principle Direction, to: NW

Weather Days

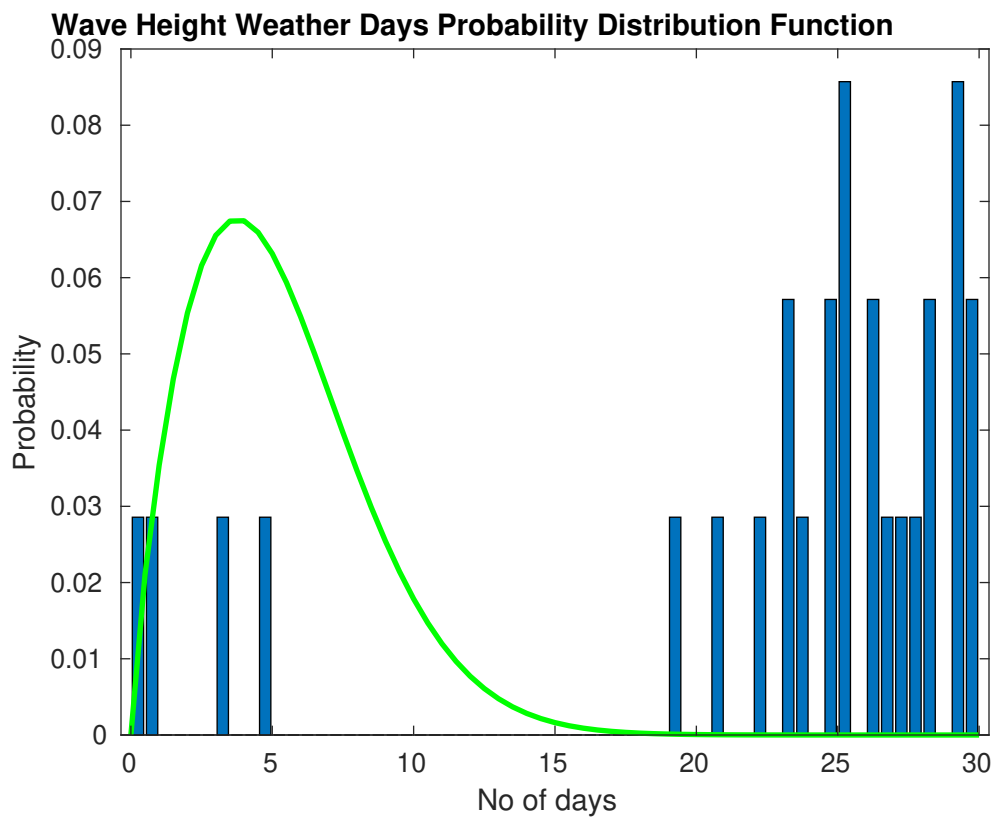
Current Speed > 0.5 knots Mean: 6.5 days Range: 1.4 - 11.6 days p50:6 days p75:3 days p90:2 days

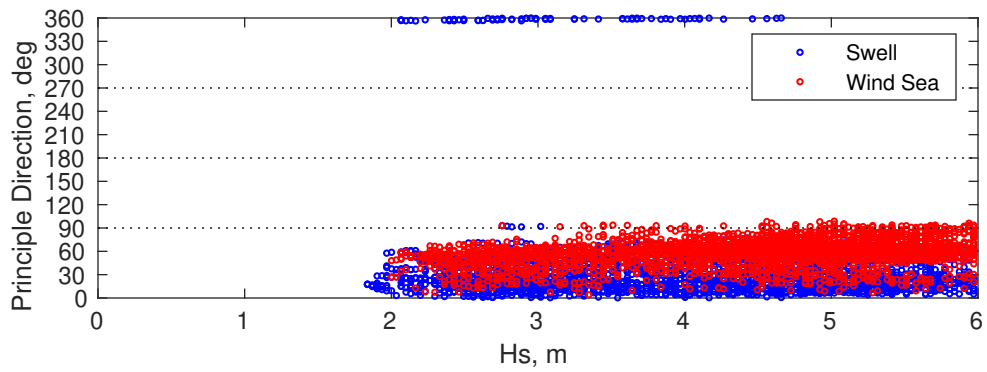
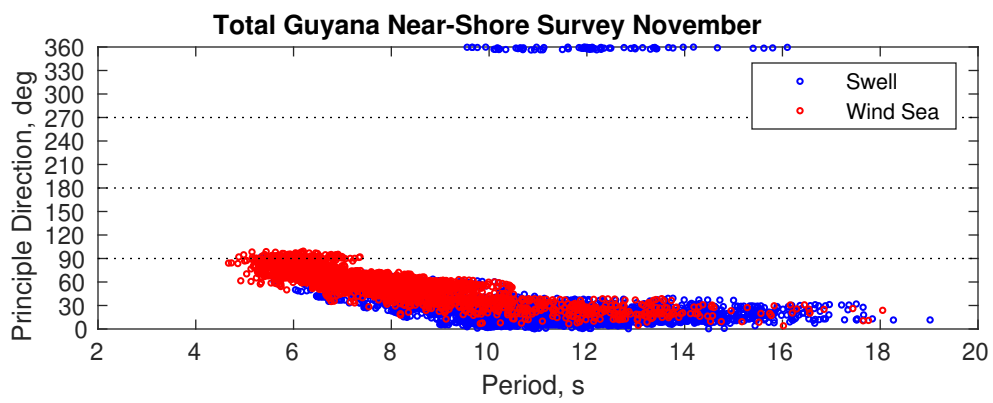
Current Speed > 1.0 knots Mean: 0.0 days Range: 0.0 - 0.0 days p50:1 days p75:1 days p90:1 days

Current Speed > 1.5 knots Mean: 0.0 days Range: 0.0 - 0.0 days p50:1 days p75:1 days p90:1 days

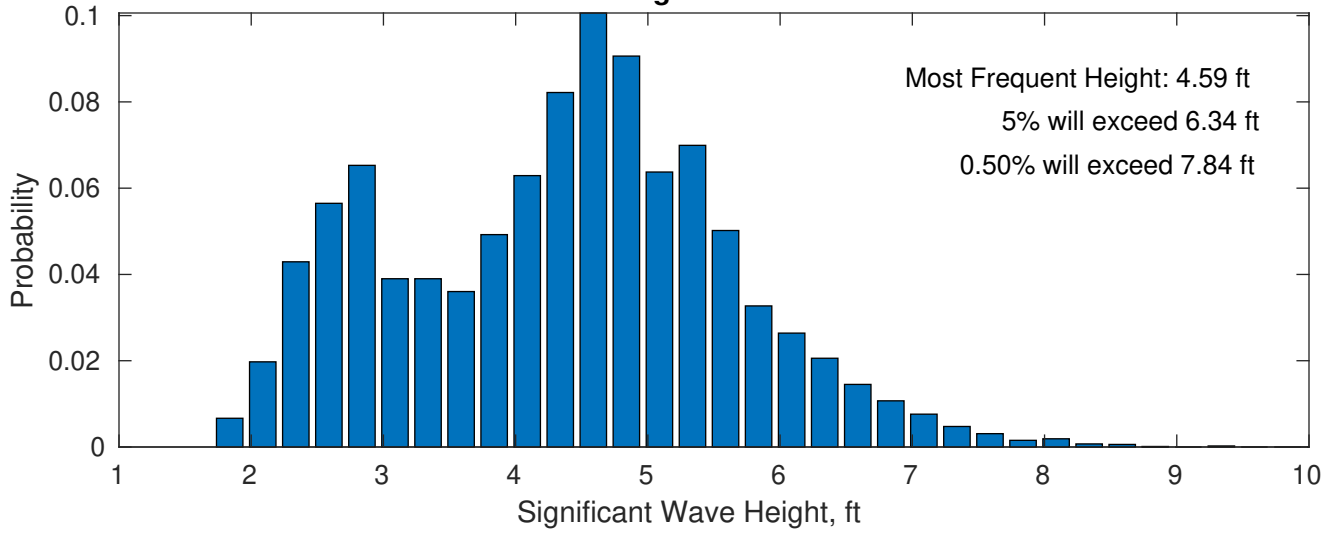
Severe Storms

Severe storms with gale force winds and extreme waves are not expected during this month.

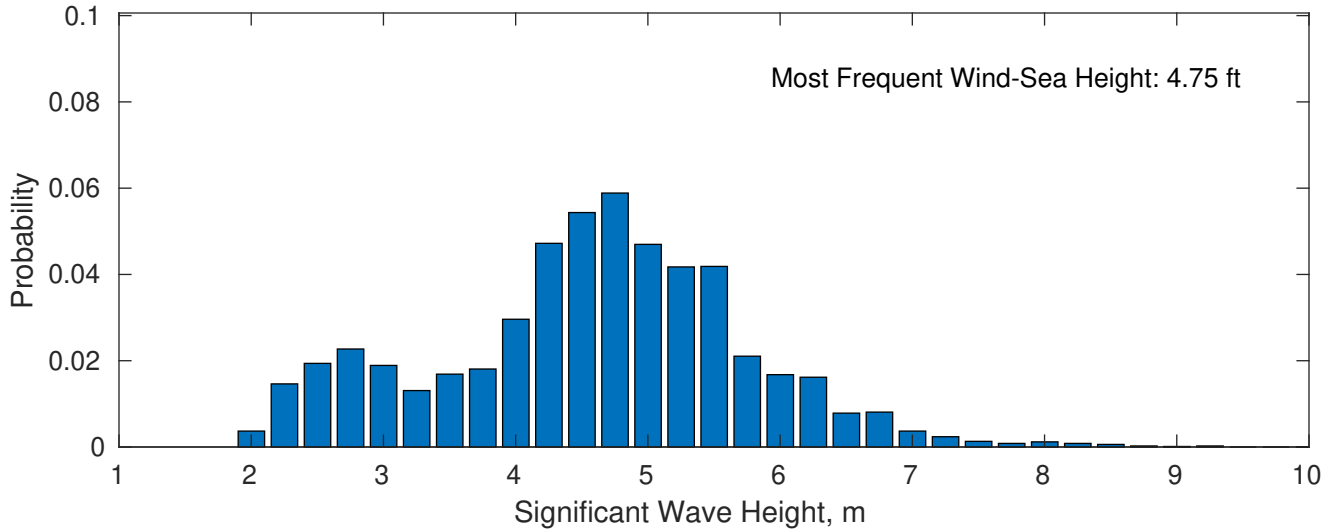




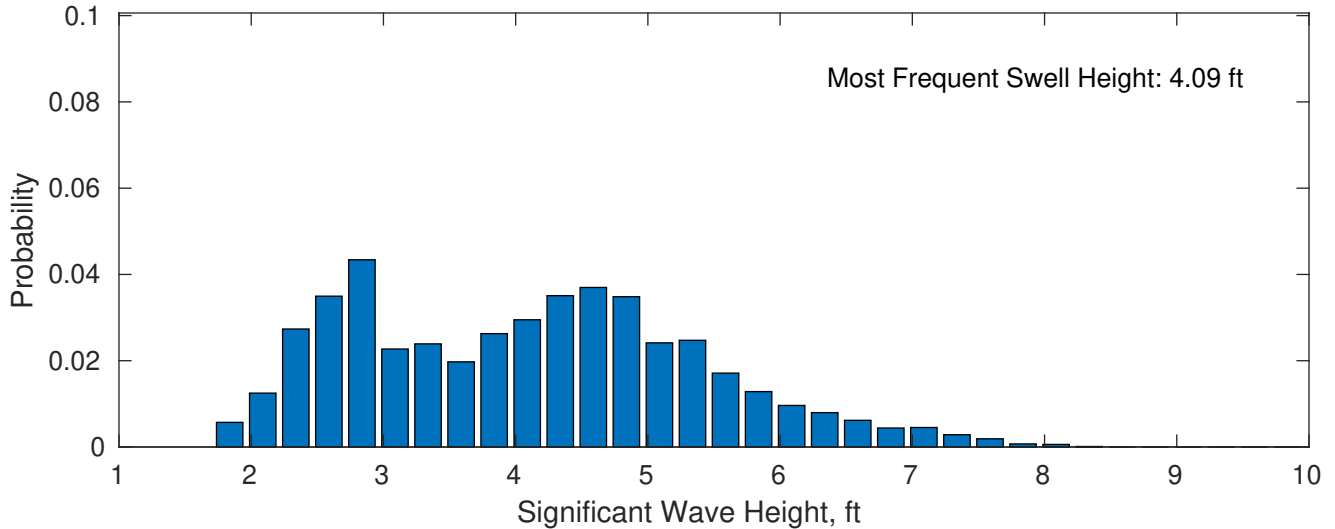
November Wave Height PDF: 1979 - 2015



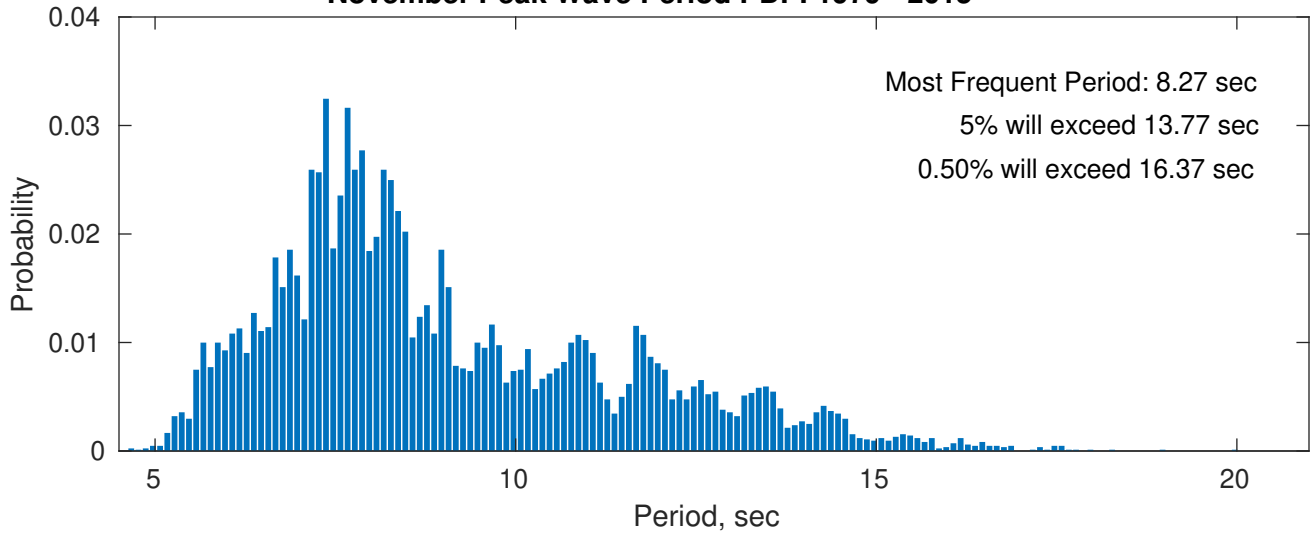
Wind-Sea: 52.93%



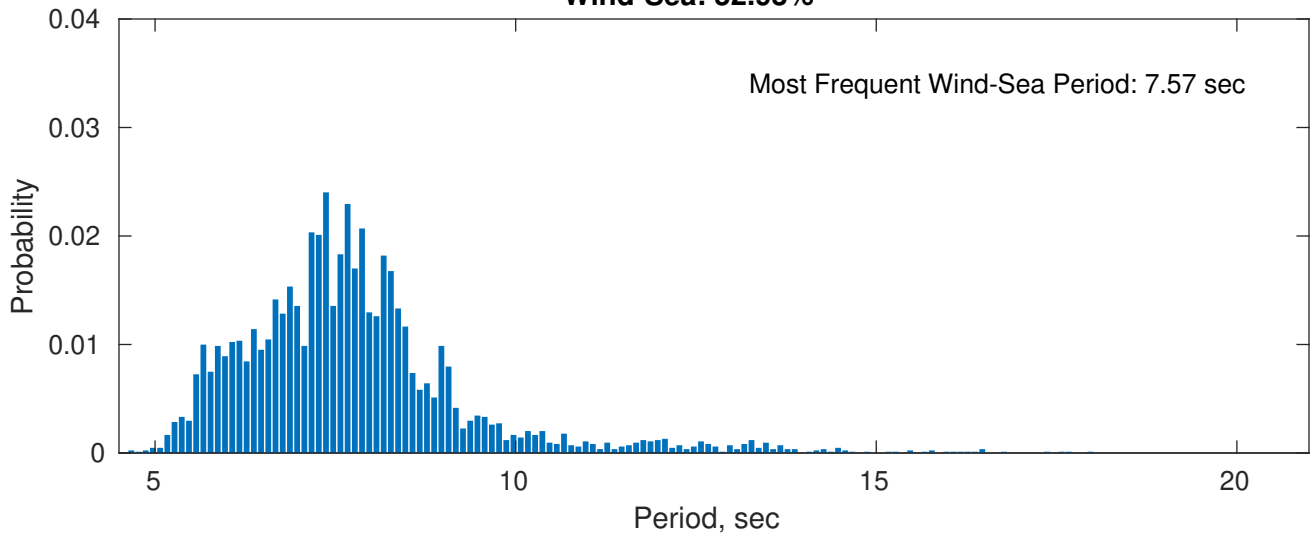
Swell: 47.07%



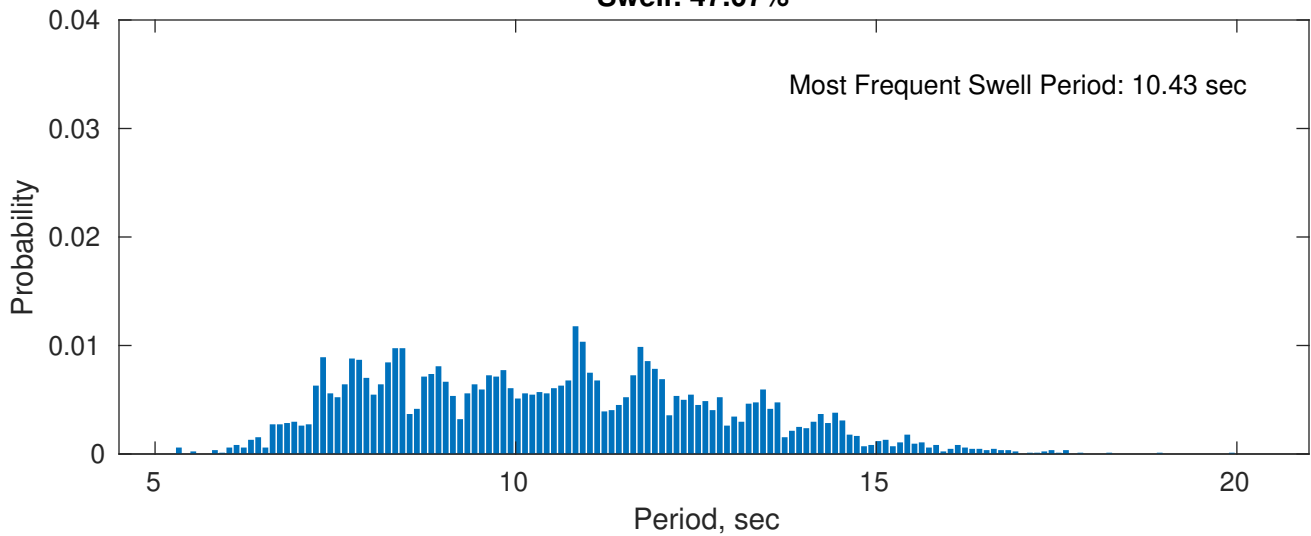
November Peak Wave Period PDF: 1979 - 2015



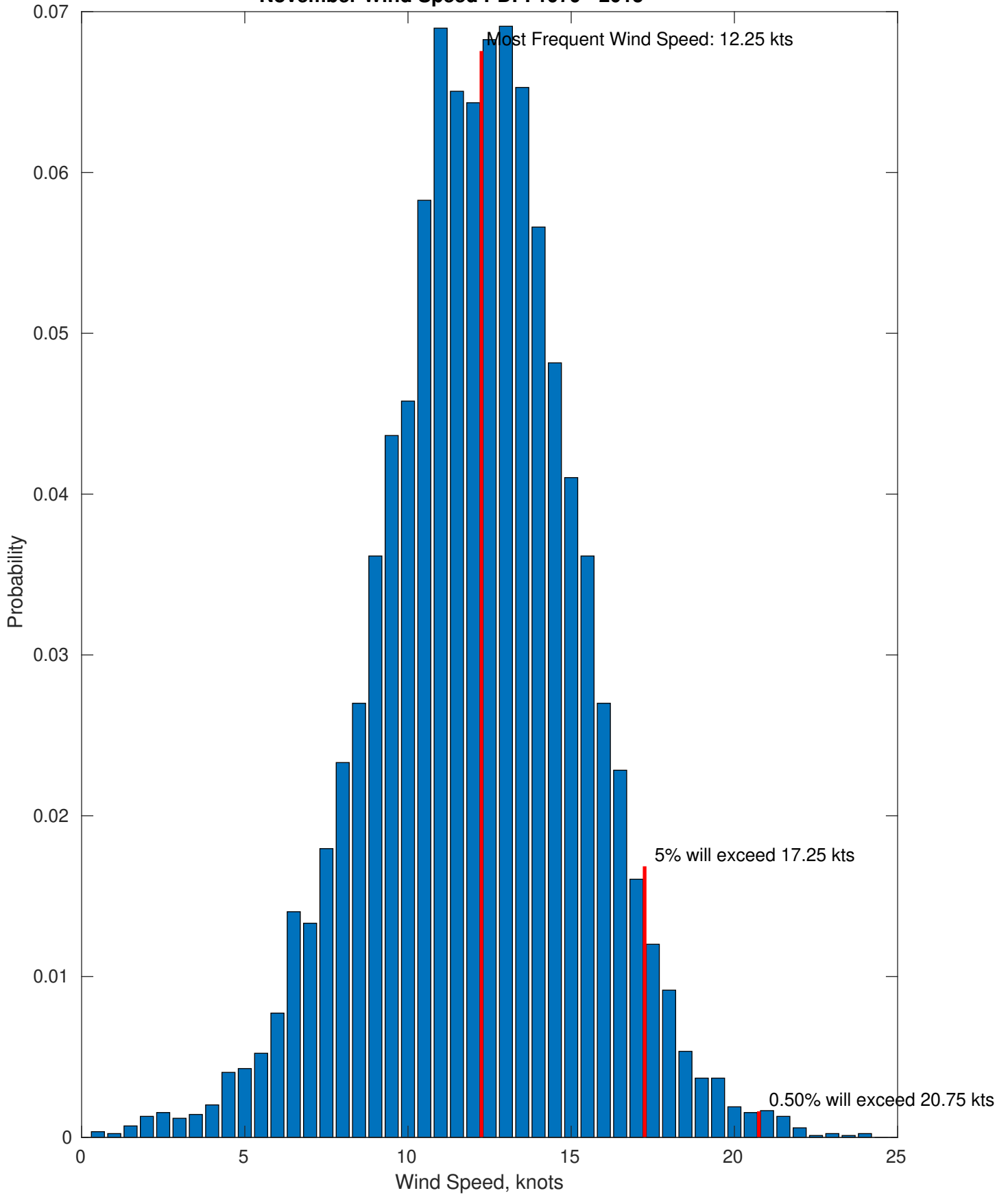
Wind-Sea: 52.93%



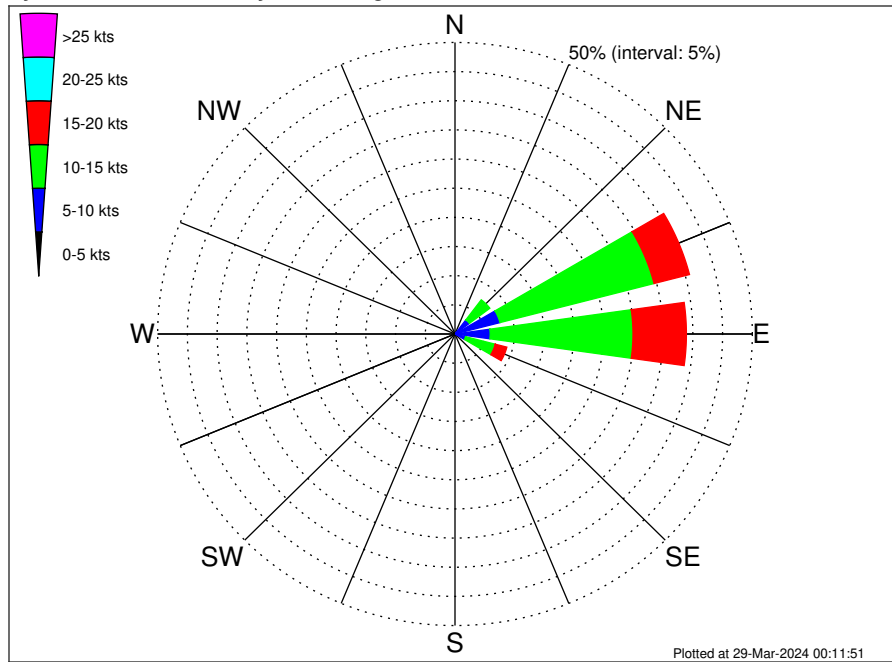
Swell: 47.07%



November Wind Speed PDF: 1979 - 2015



Total Guyana Near-Shore Survey Climatological Wind Rose for November: 1979 - 2015



Joint Frequency Distribution Table

	N	NNE	NE	ENE	E	ESE	SE	SSE	S	SSW	SW	WSW	W	WNW	NW	NNW	Total
calm	•	•	•	•	•	•	•	•	0.01	•	•	•	•	0.01	0.01	•	0.04
0 - 5 kts	0.11	0.08	0.24	0.25	0.20	0.12	0.06	0.04	0.01	0.05	0.02	0.01	0.01	•	•	0.05	1.25
5 - 10 kts	0.12	0.81	2.79	7.56	5.72	1.72	0.34	0.10	0.02	0.01	•	0.01	•	•	•	0.05	19.27
10 - 15 kts	0.01	0.30	4.30	26.77	24.01	5.15	0.40	0.04	•	•	•	•	•	•	•	•	60.98
15 - 20 kts	•	0.01	0.43	6.15	8.98	2.01	0.12	•	•	•	•	•	•	•	•	•	17.70
20 - 25 kts	•	•	•	0.14	0.32	0.30	0.01	•	•	•	•	•	•	•	•	•	0.77
25 - 30 kts	•	•	•	•	•	•	•	•	•	•	•	•	•	•	•	•	•
30 - 35 kts	•	•	•	•	•	•	•	•	•	•	•	•	•	•	•	•	•
35 - 40 kts	•	•	•	•	•	•	•	•	•	•	•	•	•	•	•	•	•
40 - 45 kts	•	•	•	•	•	•	•	•	•	•	•	•	•	•	•	•	•
45 - 50 kts	•	•	•	•	•	•	•	•	•	•	•	•	•	•	•	•	•
Total	0.24	1.20	7.77	40.87	39.23	9.30	0.94	0.17	0.05	0.06	0.02	0.02	0.01	0.01	0.01	0.10	100.00