

Total Guyana Near-Shore Survey - October

Latitude: 7.59 N Longitude: 58.11 W

Weather Days

Wave Height > 4.0 ft Mean: 11.4 days Range: 1.5 - 21.3 days p50:23 days p75:18 days p90:14.5 days

Wave Height > 5.0 ft Mean: 4.2 days Range: 0.0 - 9.1 days p50:9 days p75:4 days p90:2.5 days

Wave Height > 6.0 ft Mean: 0.9 days Range: 0.0 - 2.5 days p50:5 days p75:2 days p90:1 days

Wind Speed > 15.0 knots Mean: 5.2 days Range: 2.9 - 7.5 days p50:5.5 days p75:4 days p90:2.5 days

Wind Speed > 20.0 knots Mean: 0.1 days Range: 0.0 - 0.3 days p50:0.5 days p75:0.5 days p90:0.5 days

Wind Speed > 25.0 knots Mean: 0.0 days Range: 0.0 - 0.0 days p50:0.5 days p75:0.5 days p90:0.5 days

Working Window

Wave Height < 4.0 ft
A 1 day or longer window will statistically occur 2.7 times per month
A 2 day or longer window will statistically occur 1.7 times per month
A 3 day or longer window will statistically occur 1.1 times per month

Wave Height < 5.0 ft
A 1 day or longer window will statistically occur 3.2 times per month
A 2 day or longer window will statistically occur 2.5 times per month
A 3 day or longer window will statistically occur 2.0 times per month

Wave Height < 6.0 ft
A 1 day or longer window will statistically occur 2.4 times per month
A 2 day or longer window will statistically occur 2.1 times per month
A 3 day or longer window will statistically occur 2.0 times per month

Waves

Mean Height: 2 - 4 ft

The wave heights will occasionally reach 6 - 8 ft, but rarely higher.

Mean Period: 6 - 8 sec

The wave periods will occasionally reach 18 - 20 sec, but rarely longer.

Principle Direction, from: ENE

WindSea/Swell: 55% / 45%

Winds

Mean Speed: 10 - 15 kts

The winds will occasionally reach 15 - 20 kts, but rarely greater.

Principle Direction, from: E

Currents

Mean Speed: 0.25-0.50 kts

The currents will occasionally reach 0.75-1.00 kts, but rarely greater.

Principle Direction, to: NW

Weather Days

Current Speed > 0.5 knots Mean: 6.5 days Range: 2.8 - 10.2 days p50:7 days p75:4 days p90:3 days

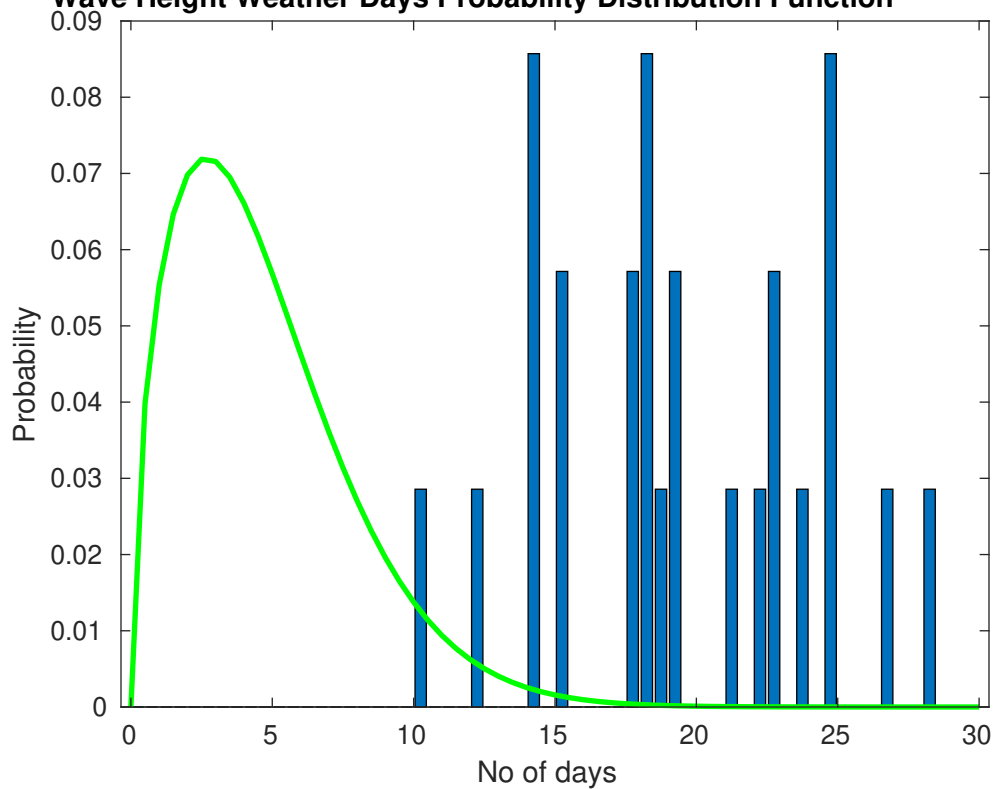
Current Speed > 1.0 knots Mean: 0.1 days Range: 0.0 - 0.3 days p50:1 days p75:1 days p90:1 days

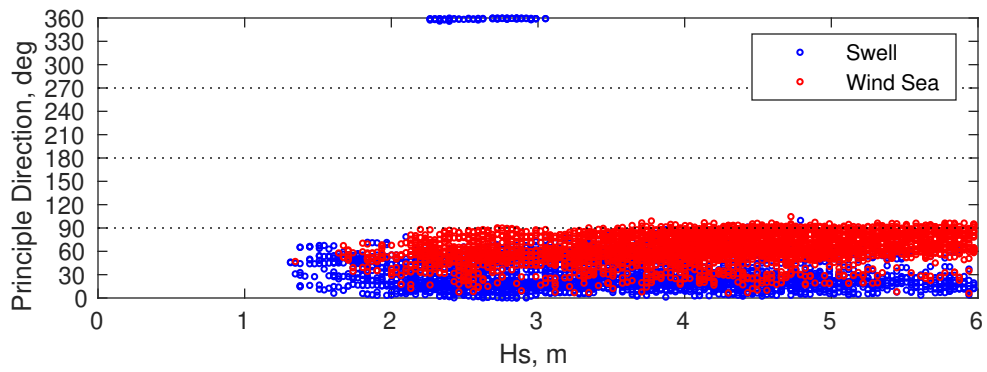
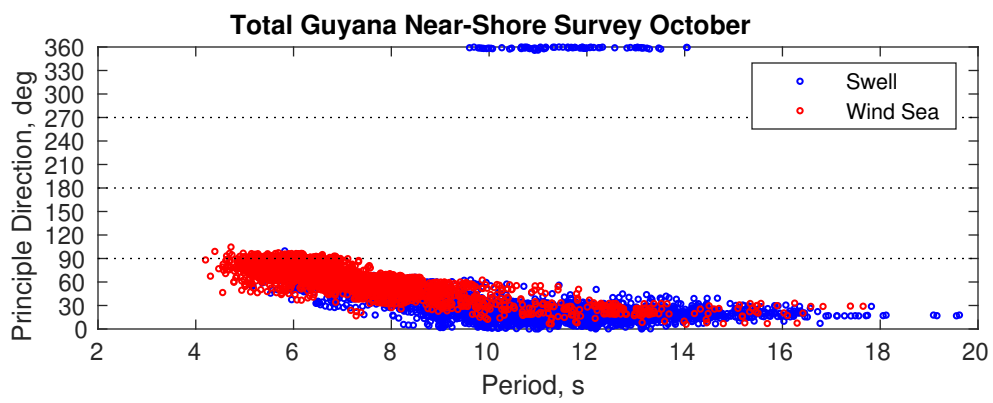
Current Speed > 1.5 knots Mean: 0.0 days Range: 0.0 - 0.0 days p50:1 days p75:1 days p90:1 days

Severe Storms

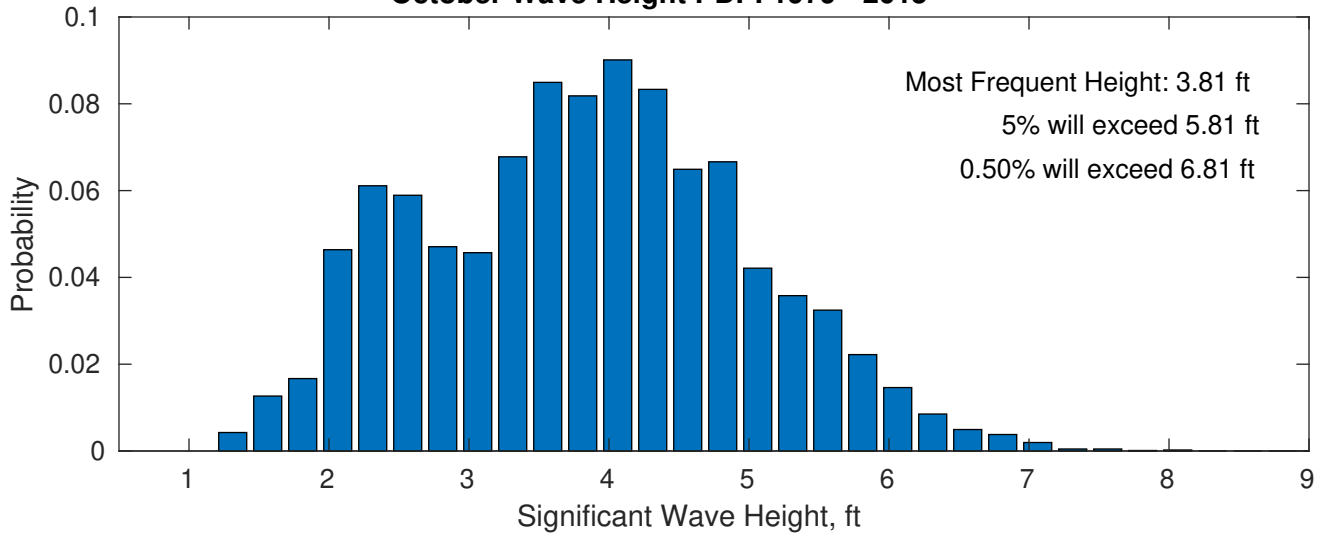
Severe storms with gale force winds and extreme waves are not expected during this month.

Wave Height Weather Days Probability Distribution Function

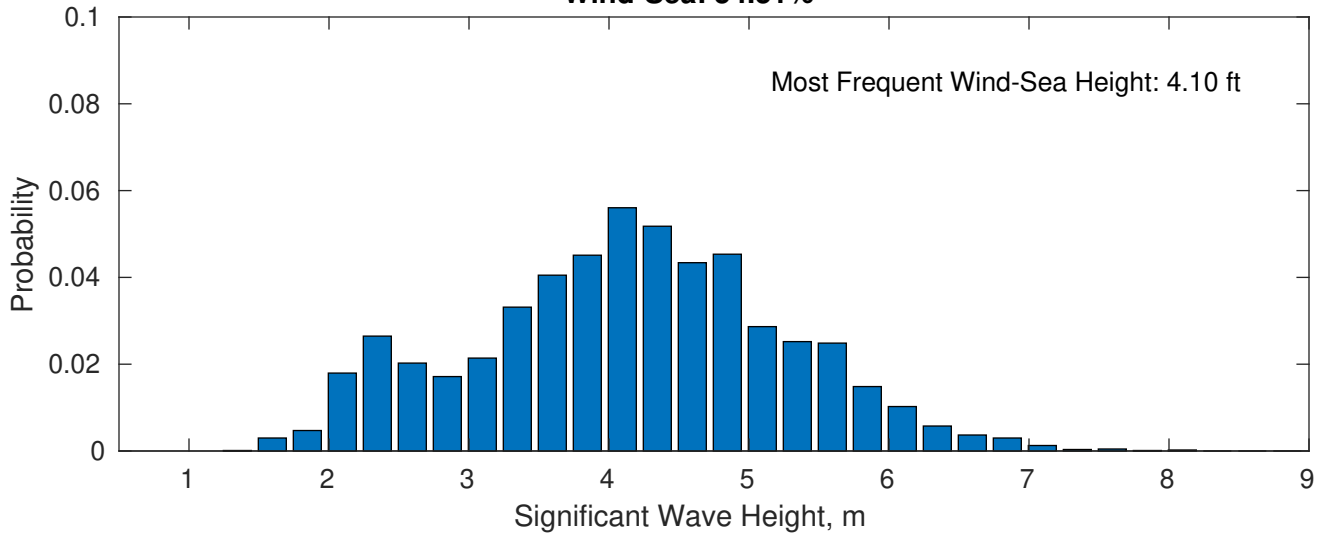




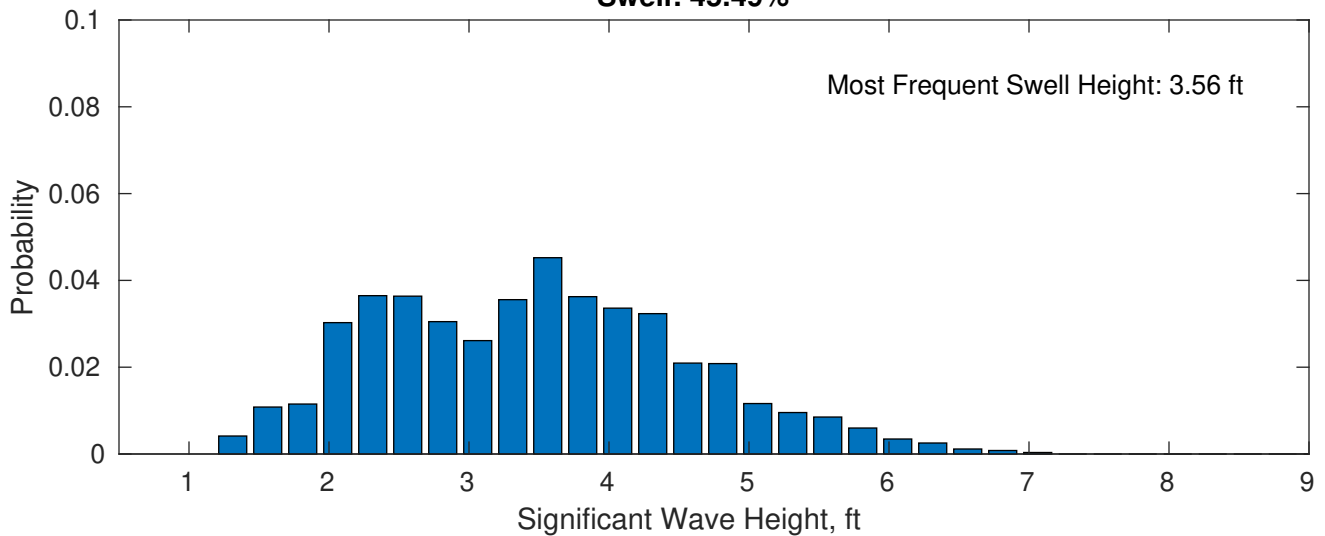
October Wave Height PDF: 1979 - 2015



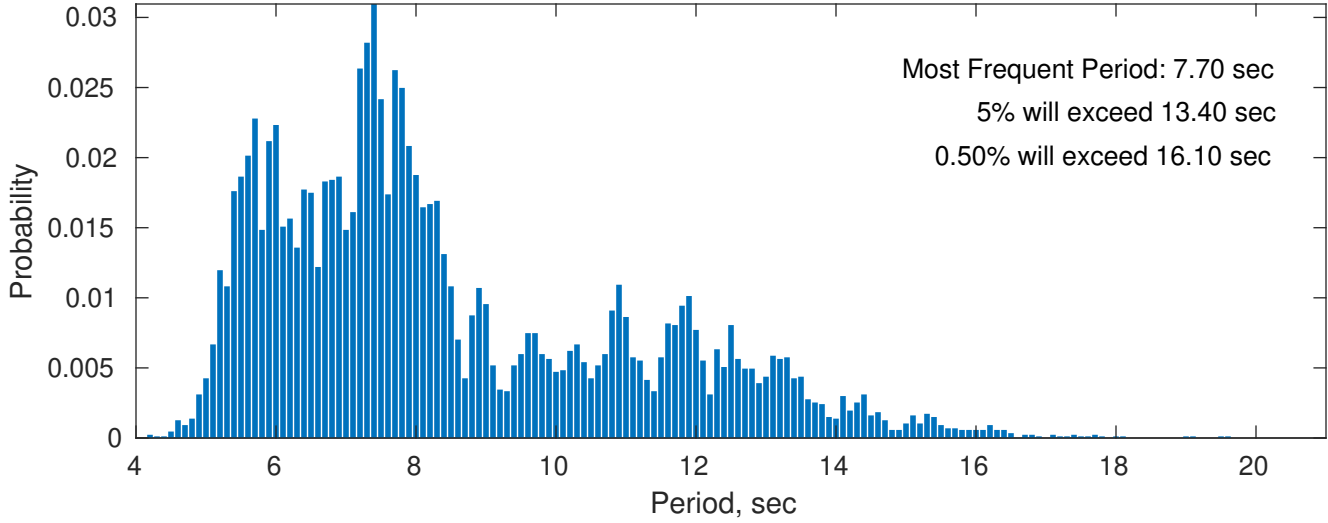
Wind-Sea: 54.51%



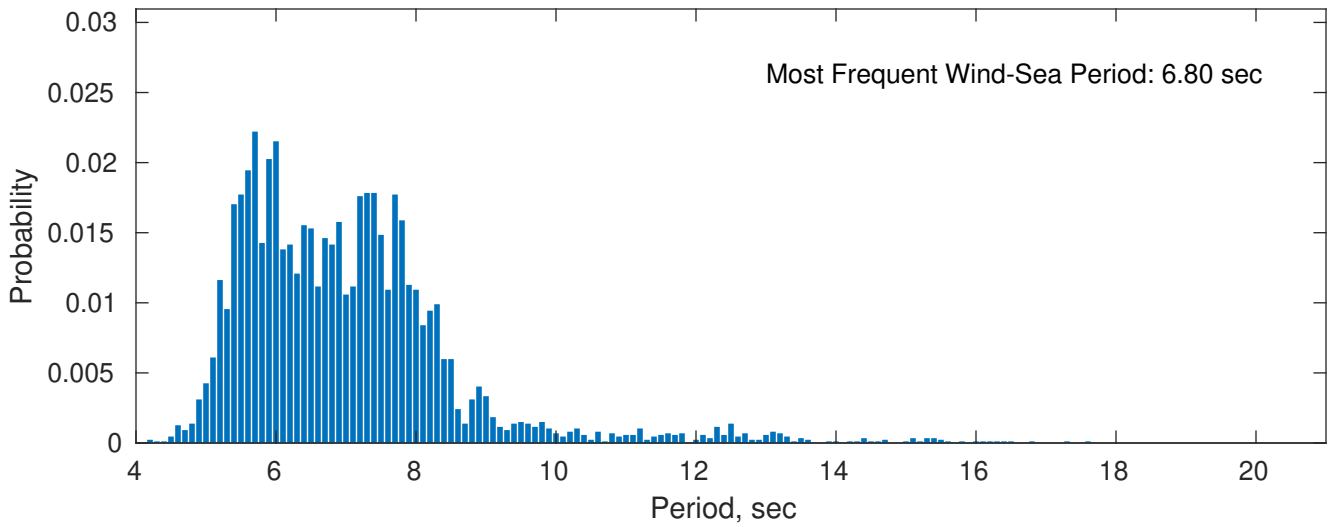
Swell: 45.49%



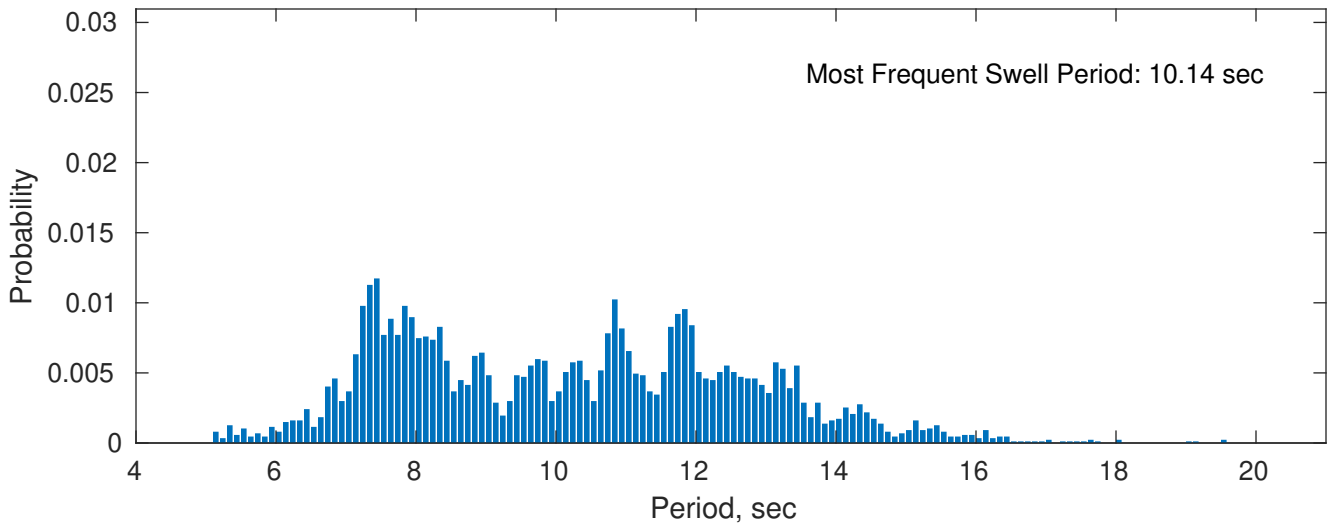
October Peak Wave Period PDF: 1979 - 2015



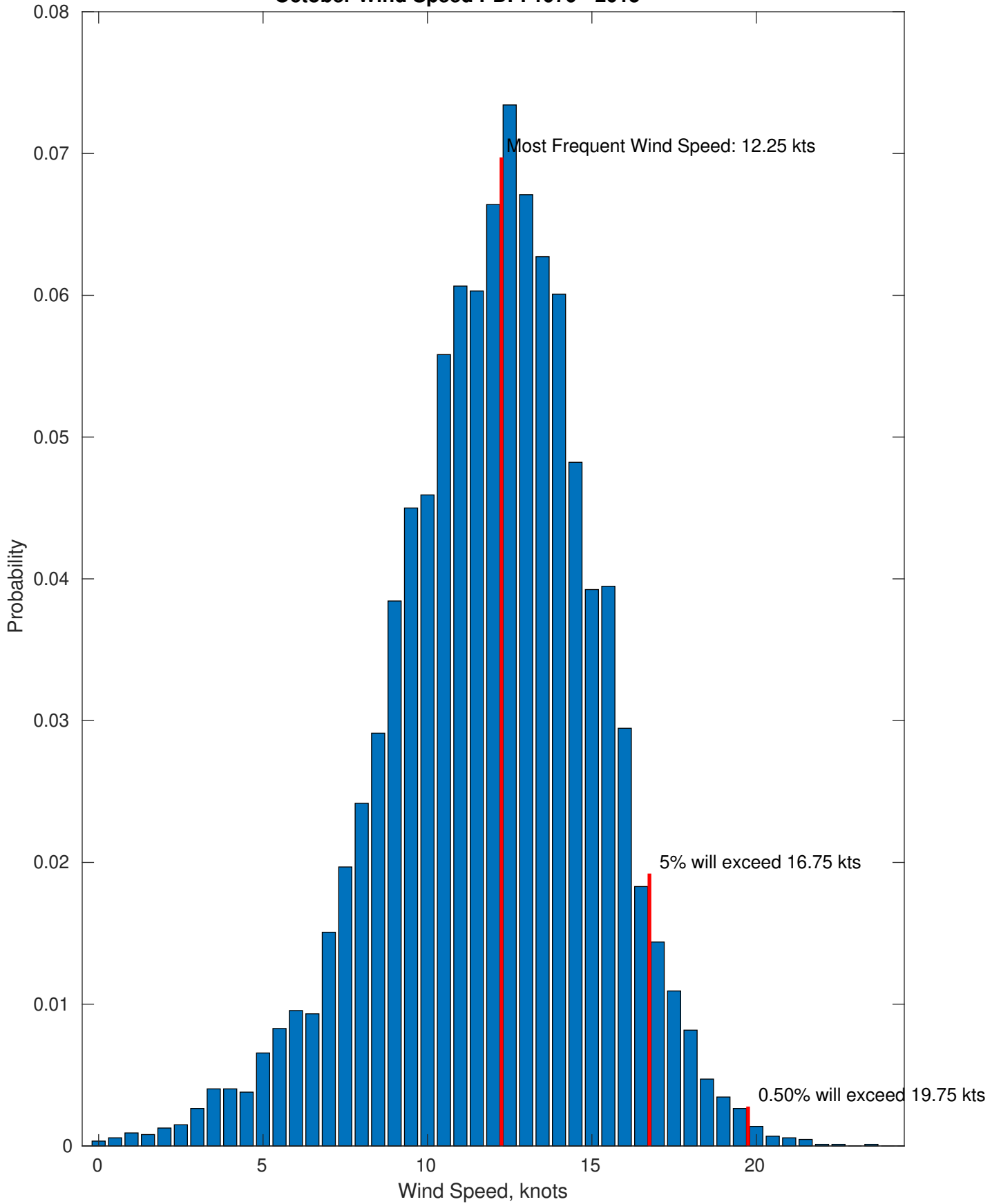
Wind-Sea: 54.51%



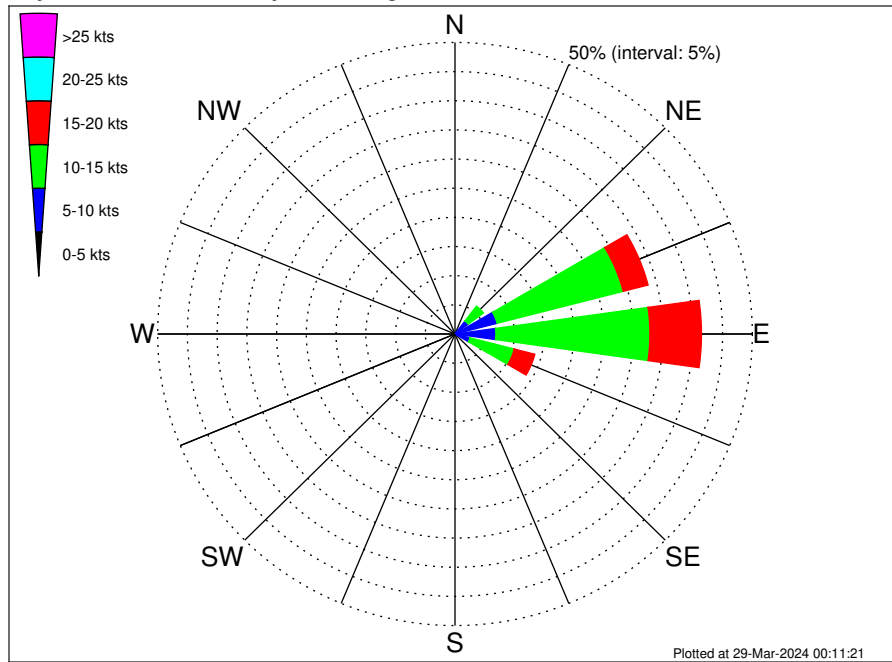
Swell: 45.49%



October Wind Speed PDF: 1979 - 2015



Total Guyana Near-Shore Survey Climatological Wind Rose for October: 1979 - 2015



Joint Frequency Distribution Table

	N	NNE	NE	ENE	E	ESE	SE	SSE	S	SSW	SW	WSW	W	WNW	NW	NNW	Total
calm	0.02	•	•	•	•	0.01	0.01	•	0.02	0.01	0.01	•	•	•	•	•	0.09
0 - 5 kts	0.13	0.18	0.18	0.31	0.28	0.26	0.09	0.08	0.02	0.06	0.06	0.05	0.03	0.08	0.07	0.01	1.90
5 - 10 kts	0.36	0.73	2.61	7.01	6.59	2.34	0.48	0.08	0.05	0.01	0.02	0.05	0.03	0.03	0.02	0.10	20.52
10 - 15 kts	0.02	0.29	3.19	21.90	25.91	7.69	0.96	0.07	0.02	•	•	•	0.01	•	0.01	•	60.06
15 - 20 kts	•	0.01	0.15	4.32	8.67	3.57	0.33	0.03	•	•	•	•	•	•	•	•	17.08
20 - 25 kts	•	•	•	0.02	0.23	0.07	0.02	•	•	•	•	•	•	•	•	•	0.35
25 - 30 kts	•	•	•	•	•	•	•	•	•	•	•	•	•	•	•	•	•
30 - 35 kts	•	•	•	•	•	•	•	•	•	•	•	•	•	•	•	•	•
35 - 40 kts	•	•	•	•	•	•	•	•	•	•	•	•	•	•	•	•	•
40 - 45 kts	•	•	•	•	•	•	•	•	•	•	•	•	•	•	•	•	•
45 - 50 kts	•	•	•	•	•	•	•	•	•	•	•	•	•	•	•	•	•
Total	0.53	1.21	6.13	33.56	41.67	13.94	1.90	0.26	0.12	0.08	0.09	0.09	0.08	0.12	0.10	0.12	100.00