

Total Guyana Near-Shore Survey - September

Latitude: 7.59 N Longitude: 58.11 W

Weather Days

Wave Height > 4.0 ft Mean: 10.2 days Range: 2.4 - 18.1 days p50:16 days p75:13.5 days p90:9 days

Wave Height > 5.0 ft Mean: 3.1 days Range: 0.0 - 6.4 days p50:5 days p75:2.5 days p90:2 days

Wave Height > 6.0 ft Mean: 0.5 days Range: 0.0 - 1.3 days p50:30 days p75:1.5 days p90:0.5 days

Wind Speed > 15.0 knots Mean: 5.1 days Range: 2.8 - 7.4 days p50:4.5 days p75:4 days p90:3 days

Wind Speed > 20.0 knots Mean: 0.1 days Range: 0.0 - 0.3 days p50:0.5 days p75:0.5 days p90:0.5 days

Wind Speed > 25.0 knots Mean: 0.0 days Range: 0.0 - 0.0 days p50:0.5 days p75:0.5 days p90:0.5 days

Working Window

Wave Height < 4.0 ft
A 1 day or longer window will statistically occur 3.6 times per month
A 2 day or longer window will statistically occur 2.3 times per month
A 3 day or longer window will statistically occur 1.7 times per month

Wave Height < 5.0 ft
A 1 day or longer window will statistically occur 3.4 times per month
A 2 day or longer window will statistically occur 2.9 times per month
A 3 day or longer window will statistically occur 2.4 times per month

Wave Height < 6.0 ft
A 1 day or longer window will statistically occur 1.8 times per month
A 2 day or longer window will statistically occur 1.7 times per month
A 3 day or longer window will statistically occur 1.6 times per month

Waves

Mean Height: 2 - 4 ft

The wave heights will occasionally reach 6 - 8 ft, but rarely higher.

Mean Period: 6 - 8 sec

The wave periods will occasionally reach 14 - 16 sec, but rarely longer.

Principle Direction, from: NE

WindSea/Swell: 55% / 45%

Winds

Mean Speed: 10 - 15 kts

The winds will occasionally reach 15 - 20 kts, but rarely greater.

Principle Direction, from: E

Currents

Mean Speed: 0.25-0.50 kts

The currents will occasionally reach 0.75-1.00 kts, but rarely greater.

Principle Direction, to: NW

Weather Days

Current Speed > 0.5 knots Mean: 12.2 days Range: 7.1 - 17.3 days p50:12 days p75:8 days p90:7 days

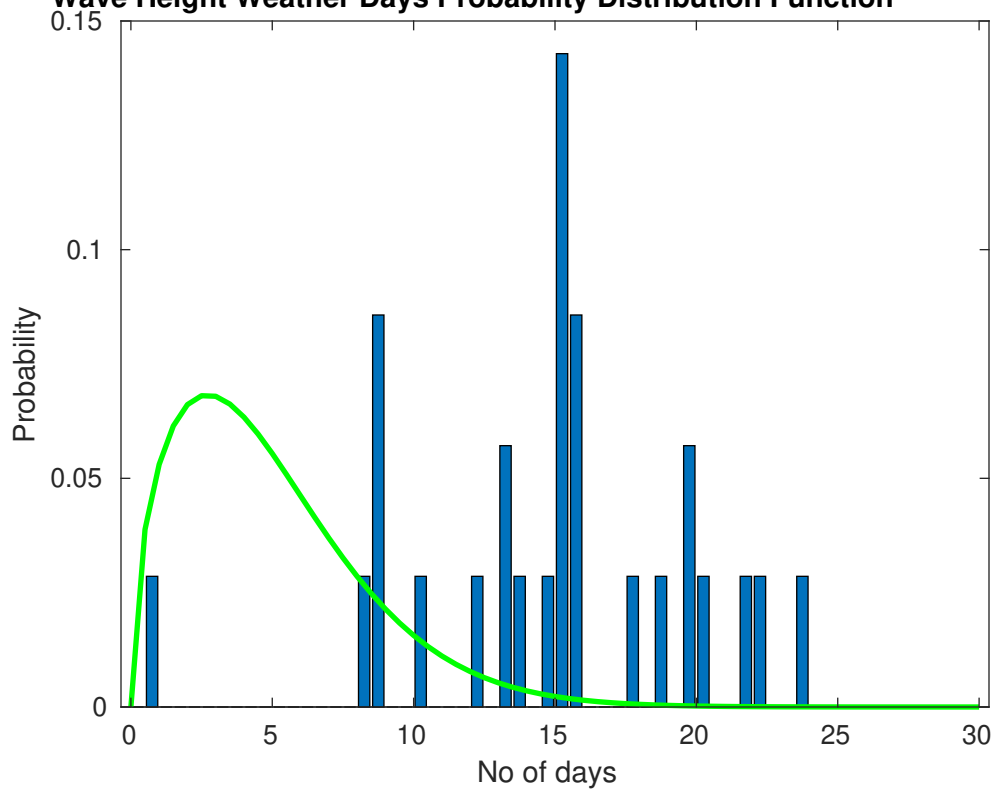
Current Speed > 1.0 knots Mean: 0.0 days Range: 0.0 - 0.0 days p50:1 days p75:1 days p90:1 days

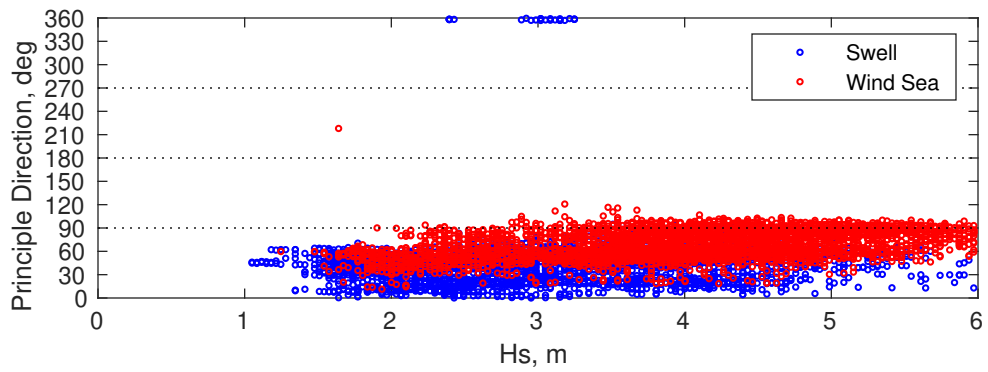
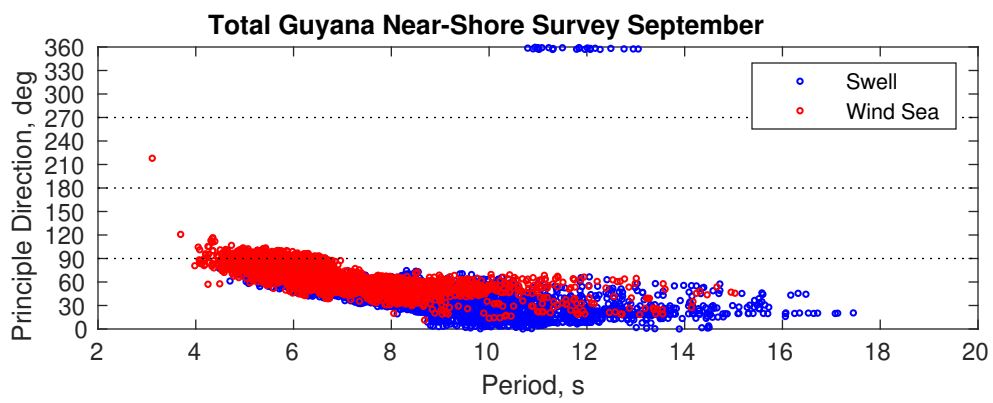
Current Speed > 1.5 knots Mean: 0.0 days Range: 0.0 - 0.0 days p50:1 days p75:1 days p90:1 days

Severe Storms

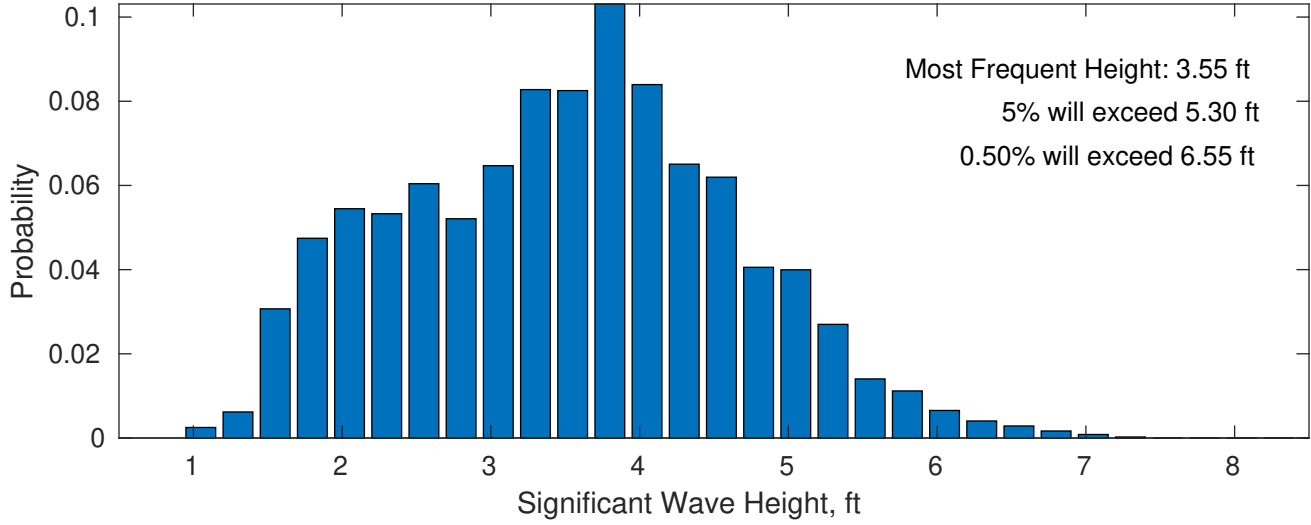
Severe storms with gale force winds and extreme waves are not expected during this month.

Wave Height Weather Days Probability Distribution Function

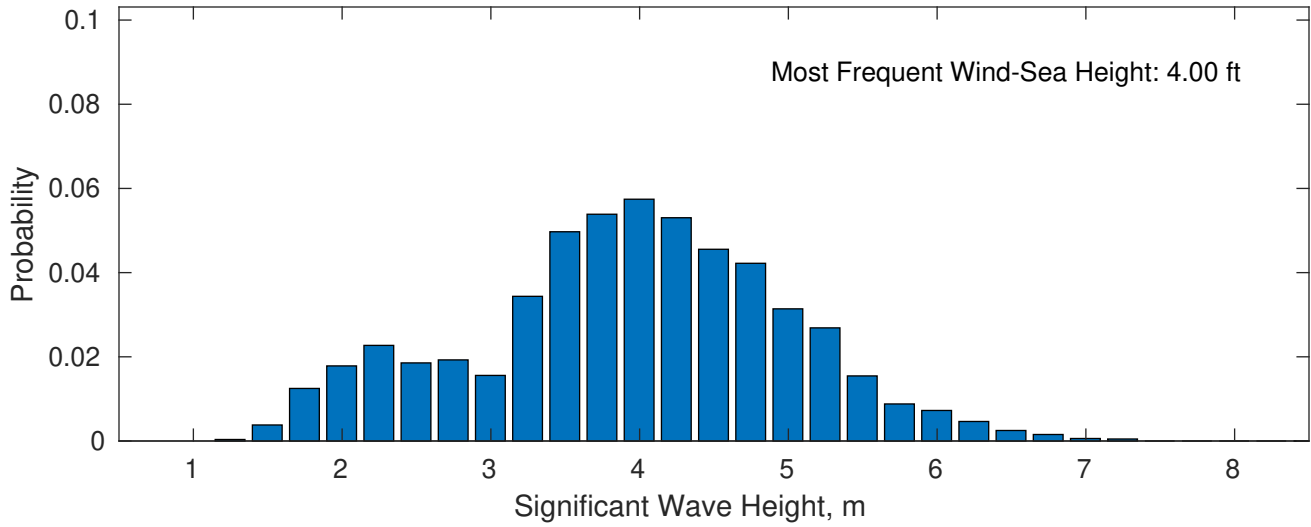




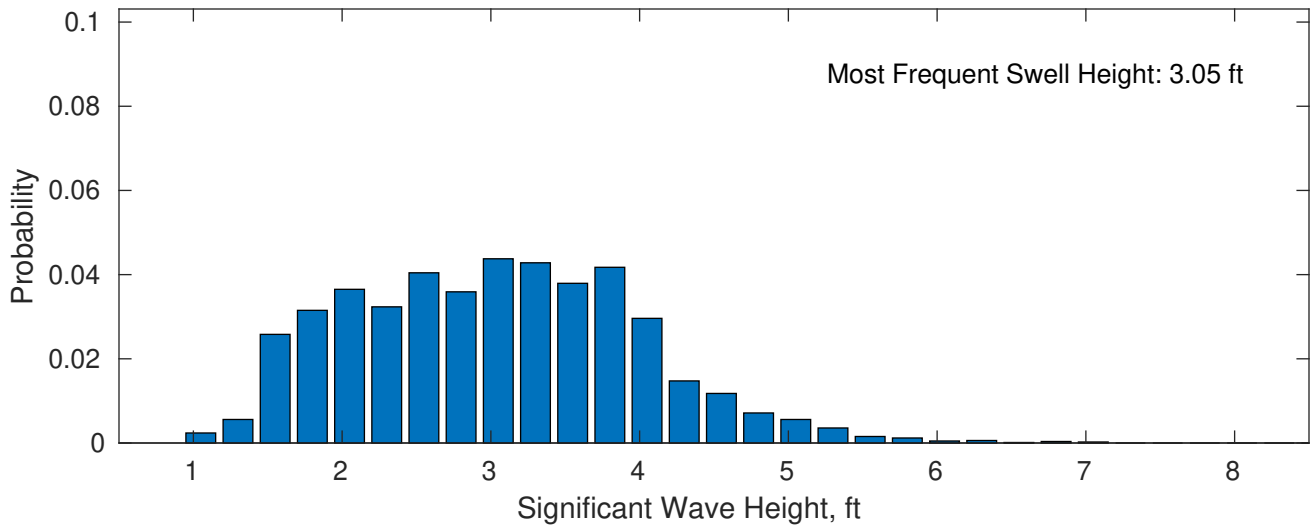
September Wave Height PDF: 1979 - 2015



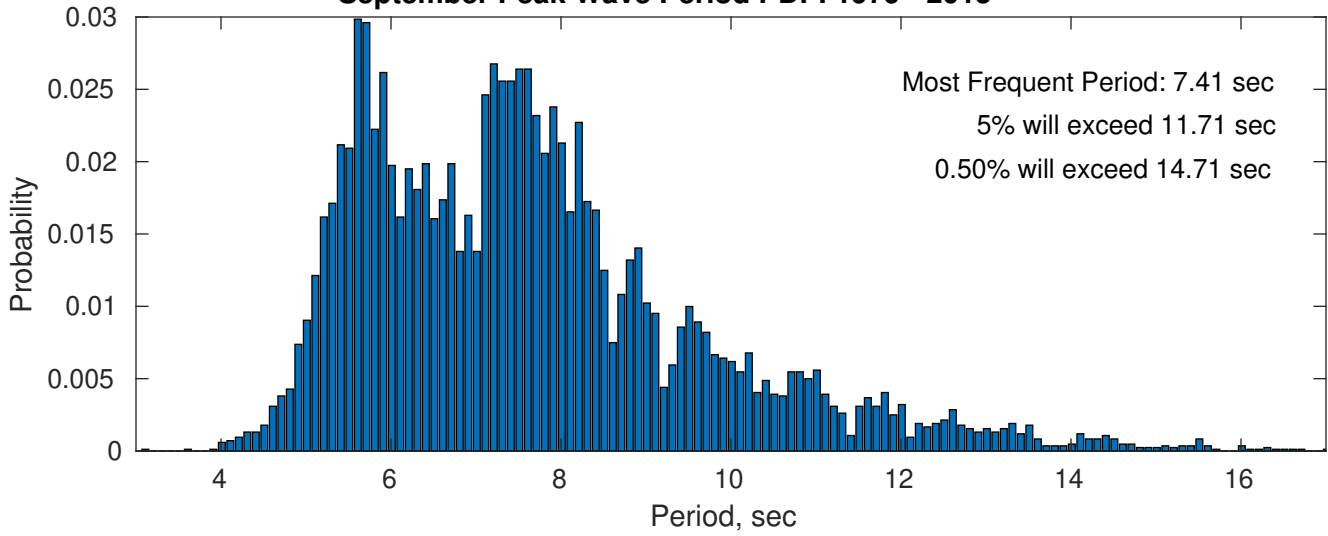
Wind-Sea: 54.63%



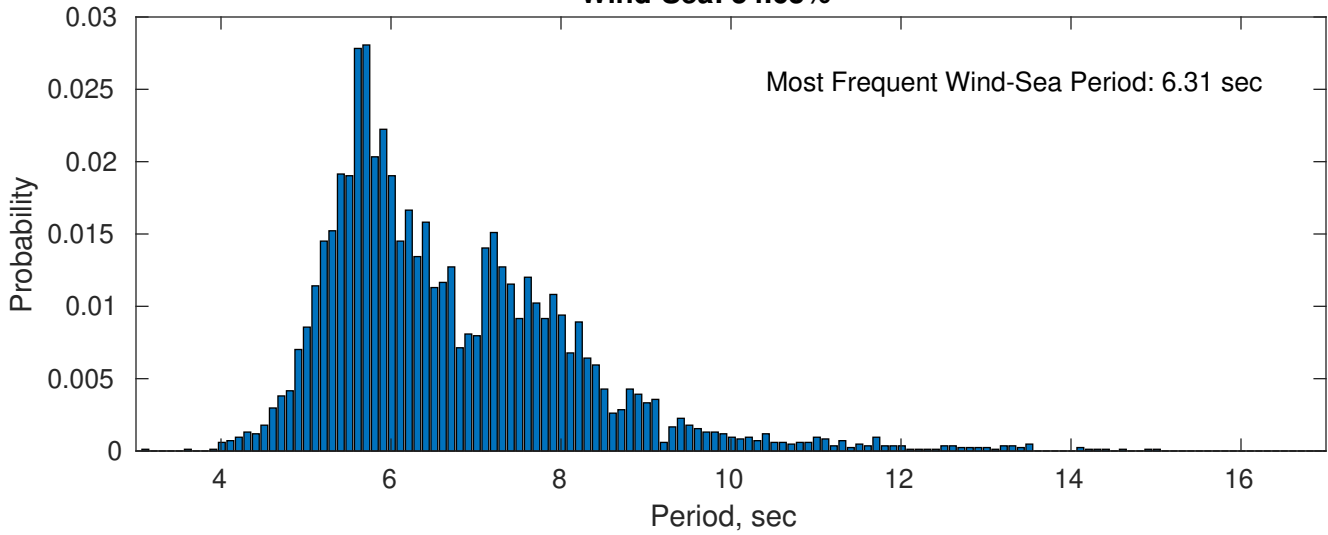
Swell: 45.37%



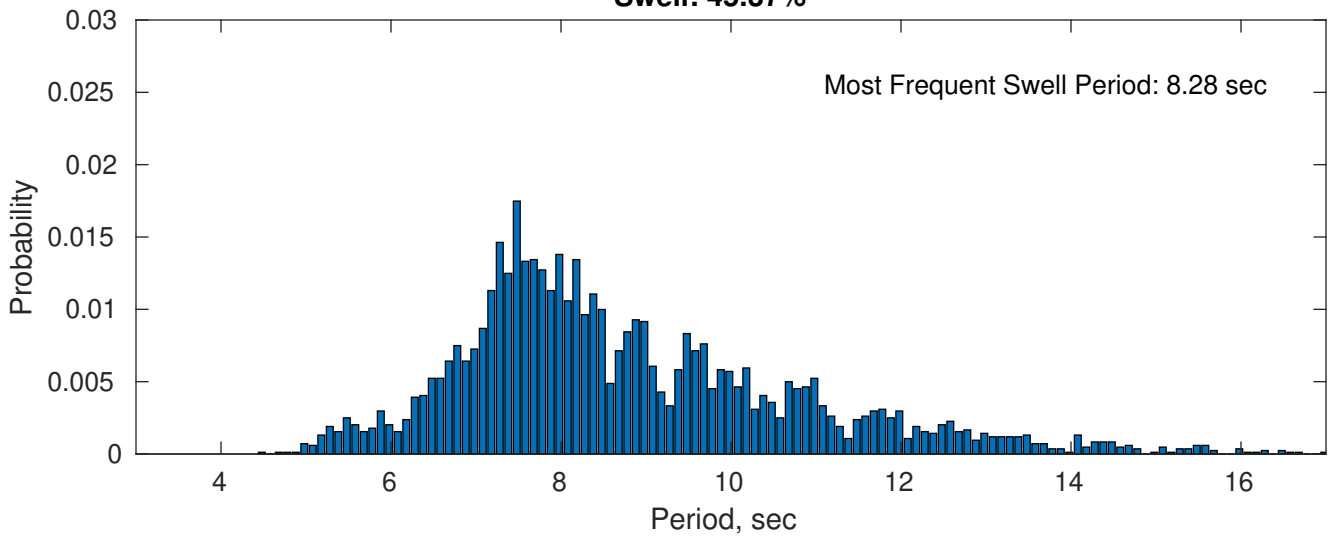
September Peak Wave Period PDF: 1979 - 2015



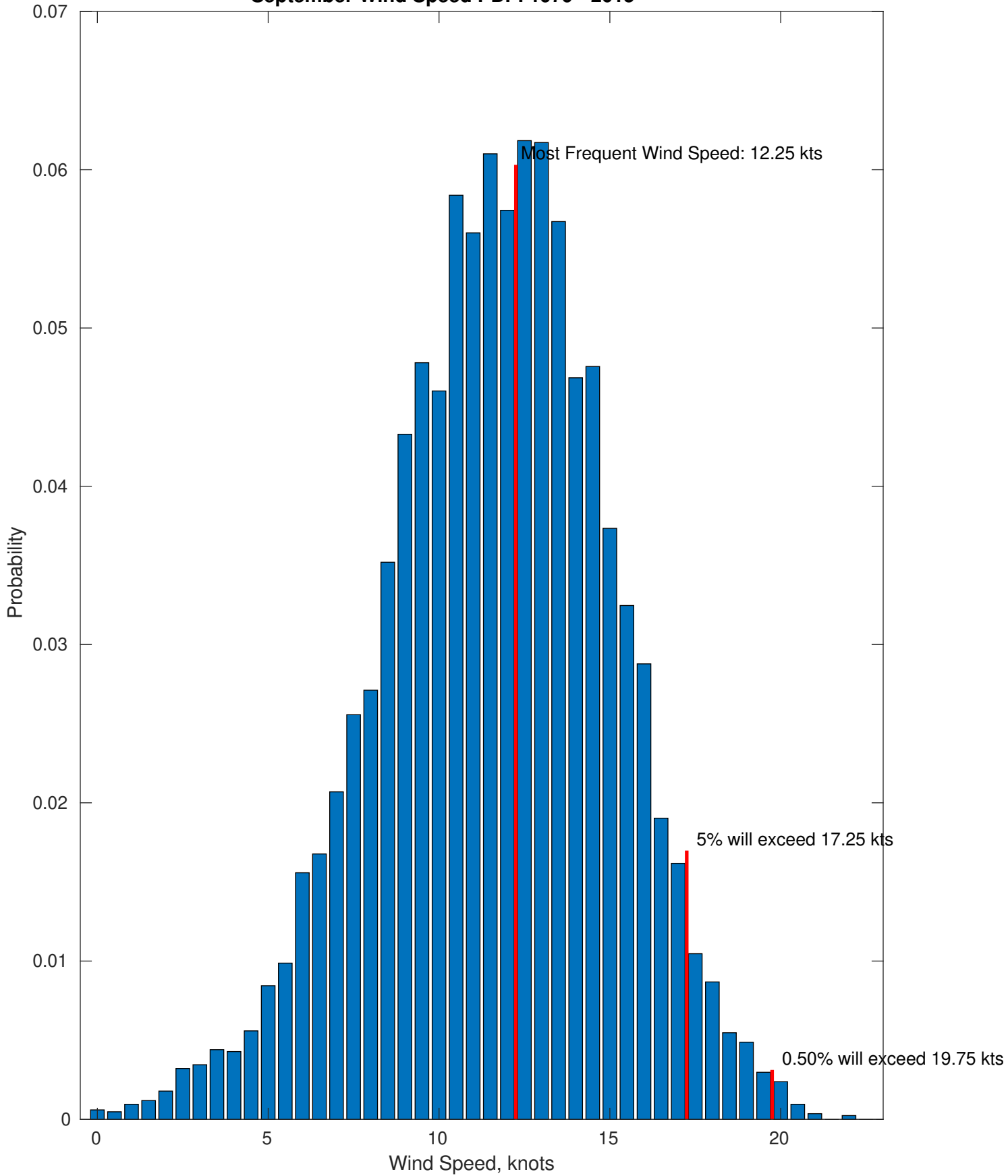
Wind-Sea: 54.63%



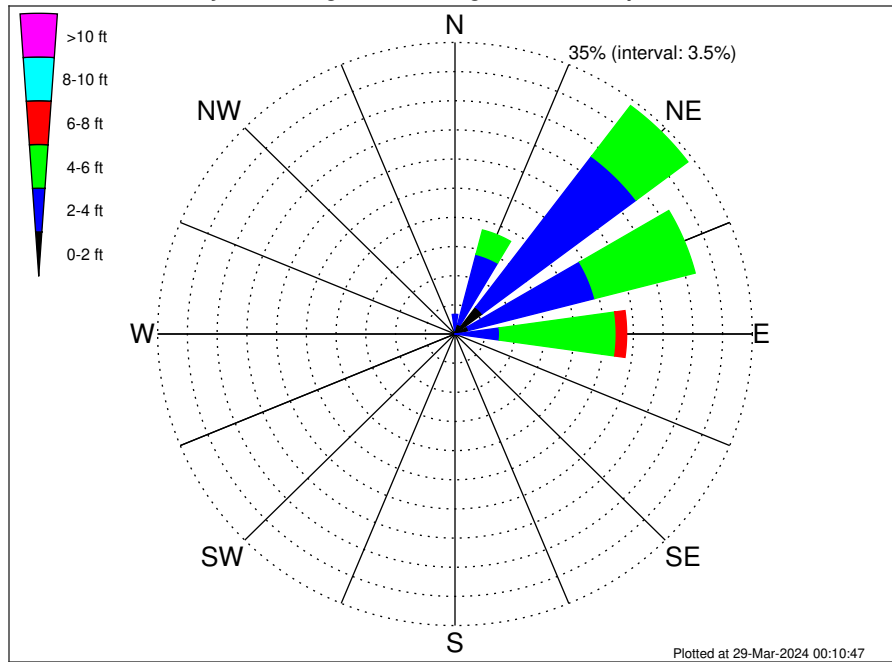
Swell: 45.37%



September Wind Speed PDF: 1979 - 2015



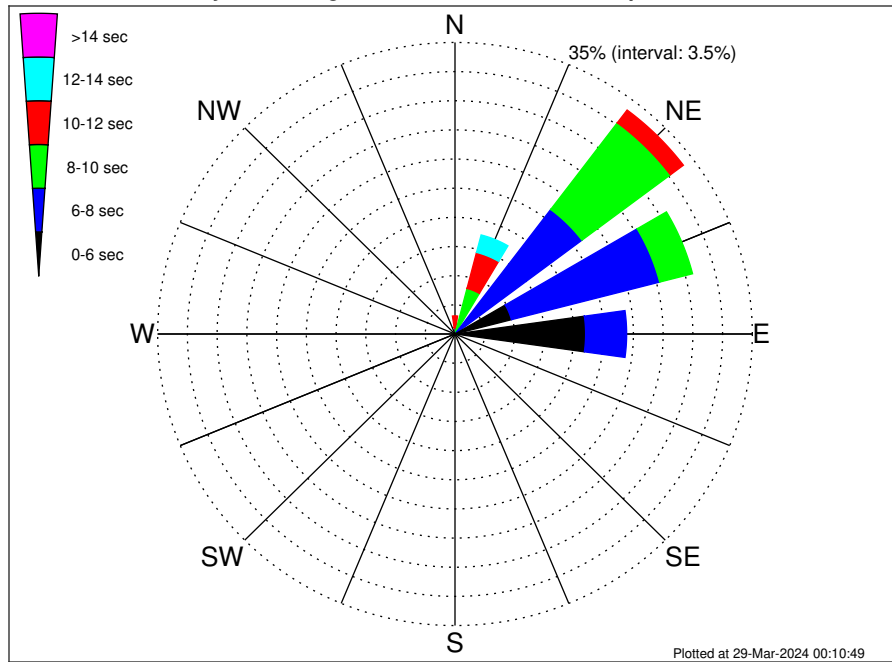
Total Guyana Near-Shore Survey Climatological WaveHeight Rose for September: 1979 - 2015



Joint Frequency Distribution Table

	N	NNE	NE	ENE	E	ESE	SE	SSE	S	SSW	SW	WSW	W	WNW	NW	NNW	Total
calm	•	•	•	•	•	•	•	•	•	•	•	•	•	•	•	•	•
1 - 2 ft	0.49	1.20	4.03	1.66	0.01	•	•	•	•	•	0.01	•	•	•	•	•	7.41
2 - 4 ft	1.88	8.68	22.68	15.34	5.24	0.13	•	•	•	•	•	•	•	•	•	•	53.95
4 - 6 ft	0.11	3.02	7.62	12.20	13.72	0.07	•	•	•	•	•	•	•	•	•	•	36.75
6 - 8 ft	•	0.12	0.14	0.40	1.22	•	•	•	•	•	•	•	•	•	•	•	1.89
8 - 10 ft	•	•	•	•	•	•	•	•	•	•	•	•	•	•	•	•	•
10 - 12 ft	•	•	•	•	•	•	•	•	•	•	•	•	•	•	•	•	•
12 - 14 ft	•	•	•	•	•	•	•	•	•	•	•	•	•	•	•	•	•
14 - 16 ft	•	•	•	•	•	•	•	•	•	•	•	•	•	•	•	•	•
16 - 18 ft	•	•	•	•	•	•	•	•	•	•	•	•	•	•	•	•	•
> 18 ft	•	•	•	•	•	•	•	•	•	•	•	•	•	•	•	•	•
Total	2.47	13.02	34.47	29.61	20.20	0.20	•	•	•	•	0.01	•	•	•	•	•	100.00

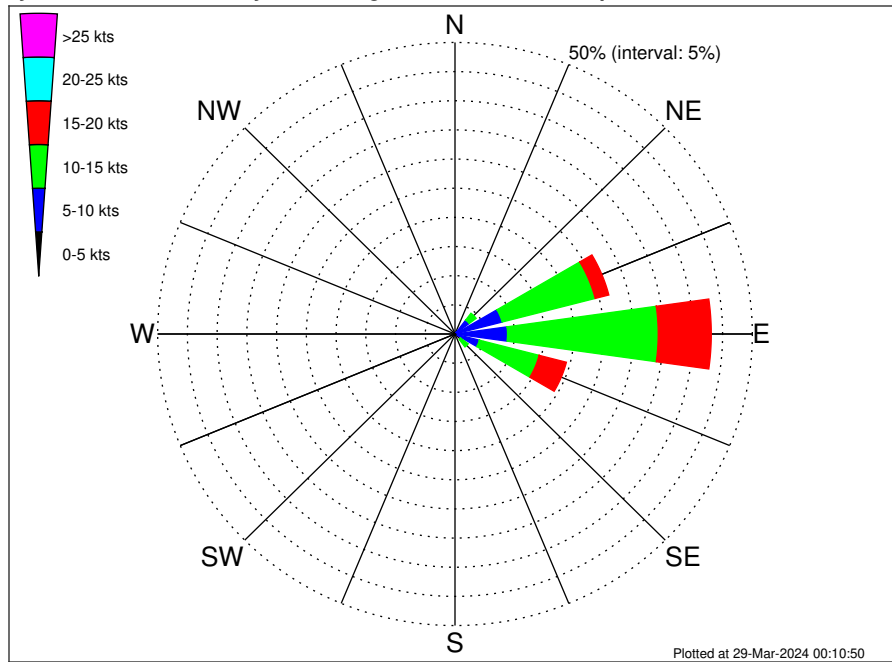
Total Guyana Near-Shore Survey Climatological WavePeriod Rose for September: 1979 - 2015



Joint Frequency Distribution Table

	N	NNE	NE	ENE	E	ESE	SE	SSE	S	SSW	SW	WSW	W	WNW	NW	NNW	Total
calm	•	•	•	•	•	•	•	•	•	•	•	•	•	•	•	•	•
1 - 2 sec	•	•	•	•	•	•	•	•	•	•	•	•	•	•	•	•	•
2 - 4 sec	•	•	•	•	0.01	0.01	•	•	•	•	0.01	•	•	•	•	•	0.04
4 - 6 sec	•	•	0.30	6.86	15.36	0.19	•	•	•	•	•	•	•	•	•	•	22.71
6 - 8 sec	•	0.31	18.42	18.03	4.83	•	•	•	•	•	•	•	•	•	•	•	41.59
8 - 10 sec	0.76	5.34	13.03	4.00	•	•	•	•	•	•	•	•	•	•	•	•	23.13
10 - 12 sec	1.42	4.47	1.91	0.57	•	•	•	•	•	•	•	•	•	•	•	•	8.37
12 - 14 sec	0.25	2.16	0.49	0.14	•	•	•	•	•	•	•	•	•	•	•	•	3.04
14 - 16 sec	0.05	0.61	0.29	0.01	•	•	•	•	•	•	•	•	•	•	•	•	0.95
18 - 20 sec	•	0.13	0.04	•	•	•	•	•	•	•	•	•	•	•	•	•	0.17
22 - 24 sec	•	•	•	•	•	•	•	•	•	•	•	•	•	•	•	•	•
Total	2.47	13.02	34.47	29.61	20.20	0.20	•	•	•	•	0.01	•	•	•	•	•	100.00

Total Guyana Near-Shore Survey Climatological Wind Rose for September: 1979 - 2015



Joint Frequency Distribution Table

	N	NNE	NE	ENE	E	ESE	SE	SSE	S	SSW	SW	WSW	W	WNW	NW	NNW	Total
calm	0.02	•	•	•	0.02	•	•	0.01	•	•	0.01	0.01	•	•	0.02	•	0.11
0 - 5 kts	0.08	0.15	0.32	0.44	0.46	0.43	0.15	0.08	0.10	0.02	0.07	•	0.02	0.01	0.05	0.08	2.49
5 - 10 kts	0.10	0.54	2.66	7.75	8.35	3.81	1.02	0.39	0.12	0.08	0.01	0.05	0.07	0.05	•	0.04	25.03
10 - 15 kts	•	0.07	1.47	16.16	25.34	10.38	1.61	0.25	0.05	0.02	•	•	•	•	•	•	55.36
15 - 20 kts	•	•	0.06	2.37	8.92	4.73	0.51	0.04	•	•	•	•	•	•	•	•	16.63
20 - 25 kts	•	•	•	0.04	0.21	0.13	0.01	•	•	•	•	•	•	•	•	•	0.39
25 - 30 kts	•	•	•	•	•	•	•	•	•	•	•	•	•	•	•	•	•
30 - 35 kts	•	•	•	•	•	•	•	•	•	•	•	•	•	•	•	•	•
35 - 40 kts	•	•	•	•	•	•	•	•	•	•	•	•	•	•	•	•	•
40 - 45 kts	•	•	•	•	•	•	•	•	•	•	•	•	•	•	•	•	•
45 - 50 kts	•	•	•	•	•	•	•	•	•	•	•	•	•	•	•	•	•
Total	0.20	0.76	4.52	26.76	43.31	19.48	3.31	0.77	0.26	0.13	0.10	0.06	0.10	0.06	0.07	0.12	100.00