

# UK Cable Route GT - Berwick-upon-Tweed - March

Latitude: 55.81 N Longitude: 1.35 E

## Weather Days

Wave Height > 6.0 ft Mean: 16.4 days Range: 12.0 - 20.8 days p50:16.5 days p75:14.5 days p90:11.5 days

Wave Height > 7.0 ft Mean: 12.9 days Range: 8.5 - 17.3 days p50:13 days p75:10 days p90:8.5 days

Wave Height > 8.0 ft Mean: 10.1 days Range: 5.9 - 14.3 days p50:10.5 days p75:6.5 days p90:5.5 days

Wind Speed > 15.0 knots Mean: 19.3 days Range: 15.5 - 23.1 days p50:19 days p75:16.5 days p90:15 days

Wind Speed > 20.0 knots Mean: 12.3 days Range: 8.0 - 16.6 days p50:12.5 days p75:10.5 days p90:7.5 days

Wind Speed > 25.0 knots Mean: 6.5 days Range: 3.3 - 9.7 days p50:6 days p75:5 days p90:3 days

## Working Window

Wave Height < 6.0 ft  
A 1 day or longer window will statistically occur 3.6 times per month  
A 2 day or longer window will statistically occur 1.8 times per month  
A 3 day or longer window will statistically occur 1.1 times per month

Wave Height < 7.0 ft  
A 1 day or longer window will statistically occur 4.3 times per month  
A 2 day or longer window will statistically occur 2.7 times per month  
A 3 day or longer window will statistically occur 1.4 times per month

Wave Height < 8.0 ft  
A 1 day or longer window will statistically occur 4.9 times per month  
A 2 day or longer window will statistically occur 3.1 times per month  
A 3 day or longer window will statistically occur 1.9 times per month

## Waves

Mean Height: 6 - 8 ft

The wave heights will occasionally reach > 18 ft, but rarely higher.

Mean Period: 6 - 8 sec

The wave periods will occasionally reach 14 - 16 sec, but rarely longer.

Principle Direction, from: N

WindSea/Swell: 51% / 49%

## Winds

Mean Speed: 15 - 20 kts

The winds will occasionally reach 35 - 40 kts, but rarely greater.

Principle Direction, from: WSW

## Currents

Mean Speed: 0.01-0.25 kts

The currents will occasionally reach 0.75-1.00 kts, but rarely greater.

Principle Direction, to: ESE

## Weather Days

Current Speed > 1.0 knots Mean: 0.1 days Range: 0.0 - 0.4 days p50:1 days p75:1 days p90:1 days

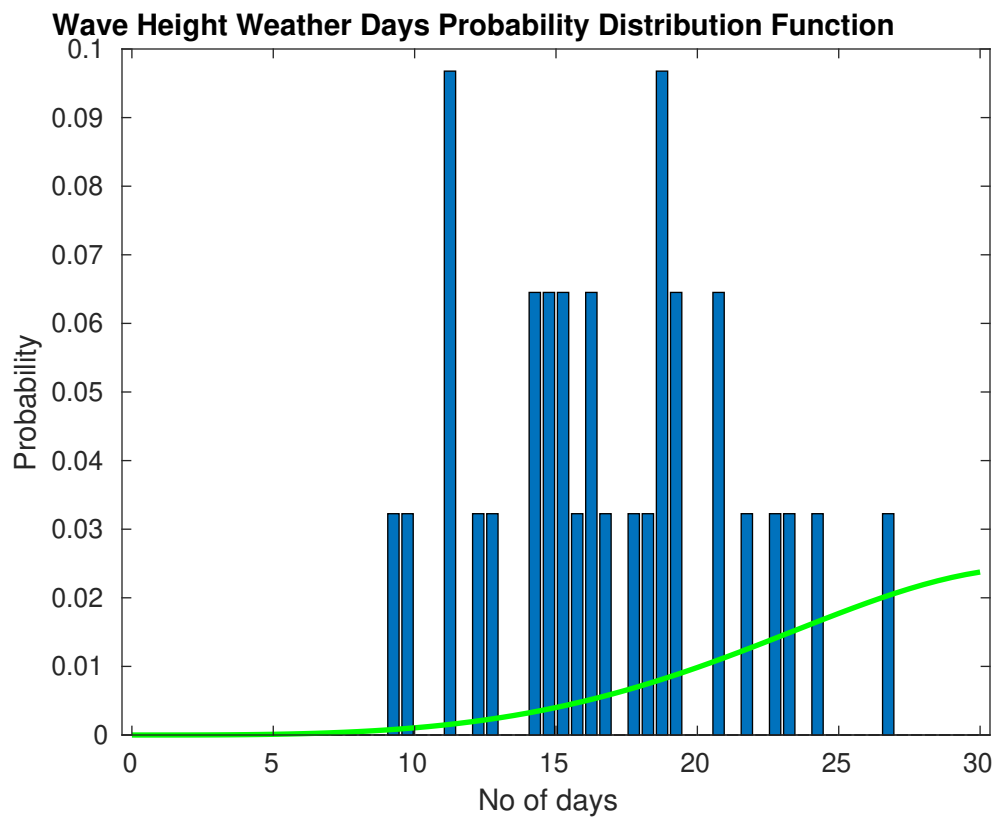
Current Speed > 1.5 knots Mean: 0.0 days Range: 0.0 - 0.0 days p50:1 days p75:1 days p90:1 days

Current Speed > 2.0 knots Mean: 0.0 days Range: 0.0 - 0.0 days p50:1 days p75:1 days p90:1 days

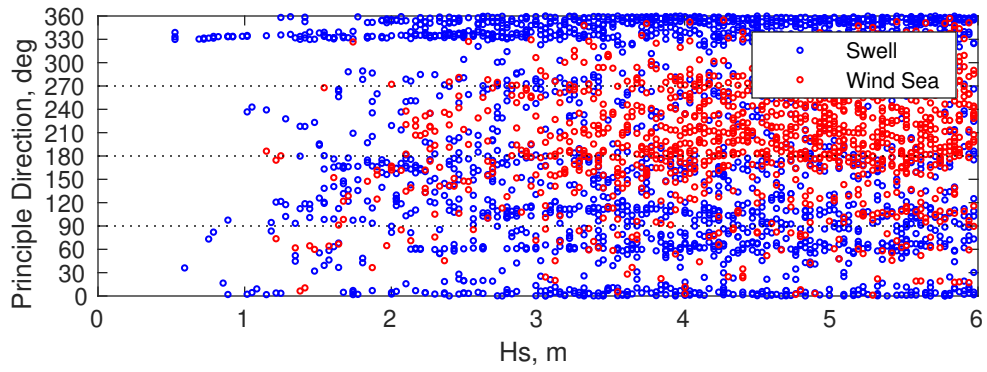
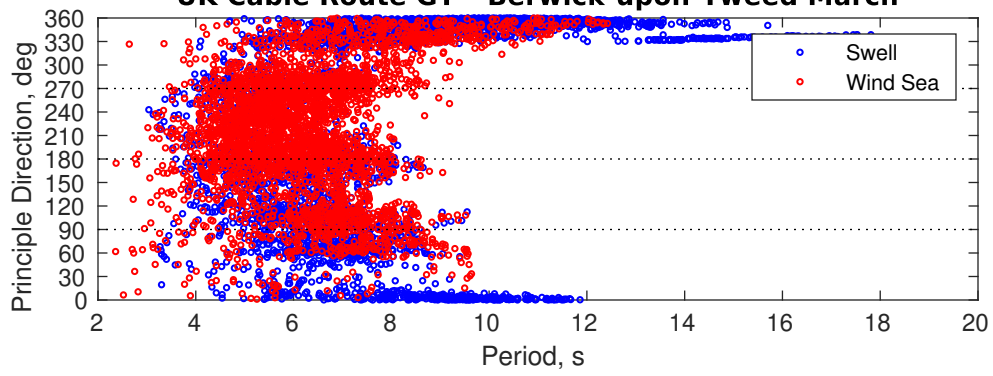
## Severe Storms

There is a 81 % chance of a storm occurring in the month with winds peaking above 34 kts.

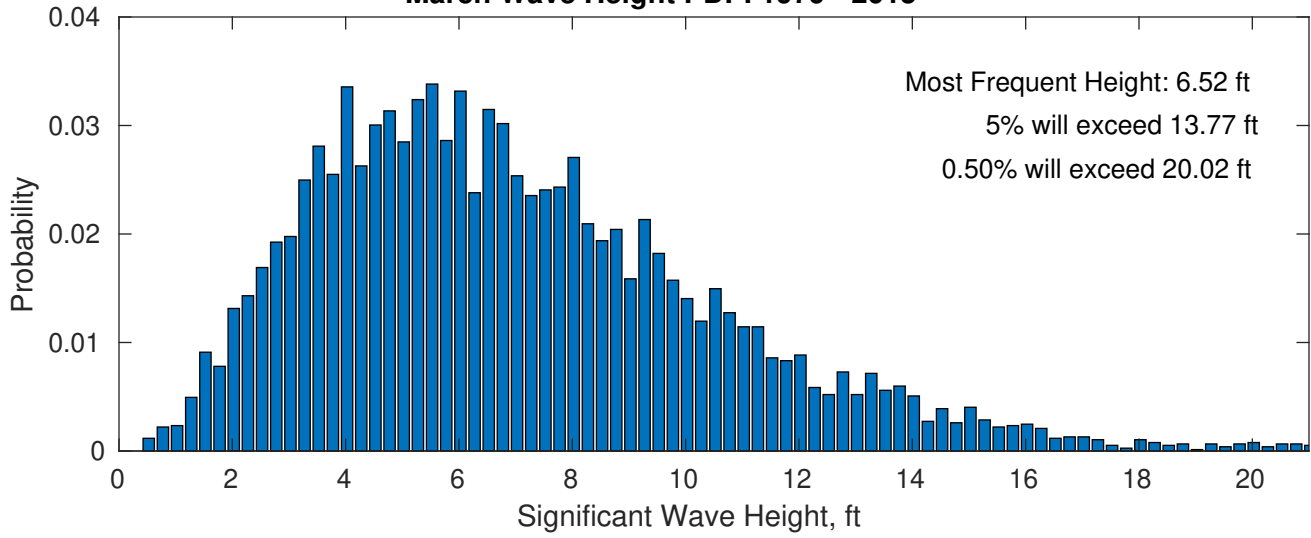
There is a 19 % chance of a storm occurring in the month with waves exceeding 3 m (10 ft) above the mean wave height.



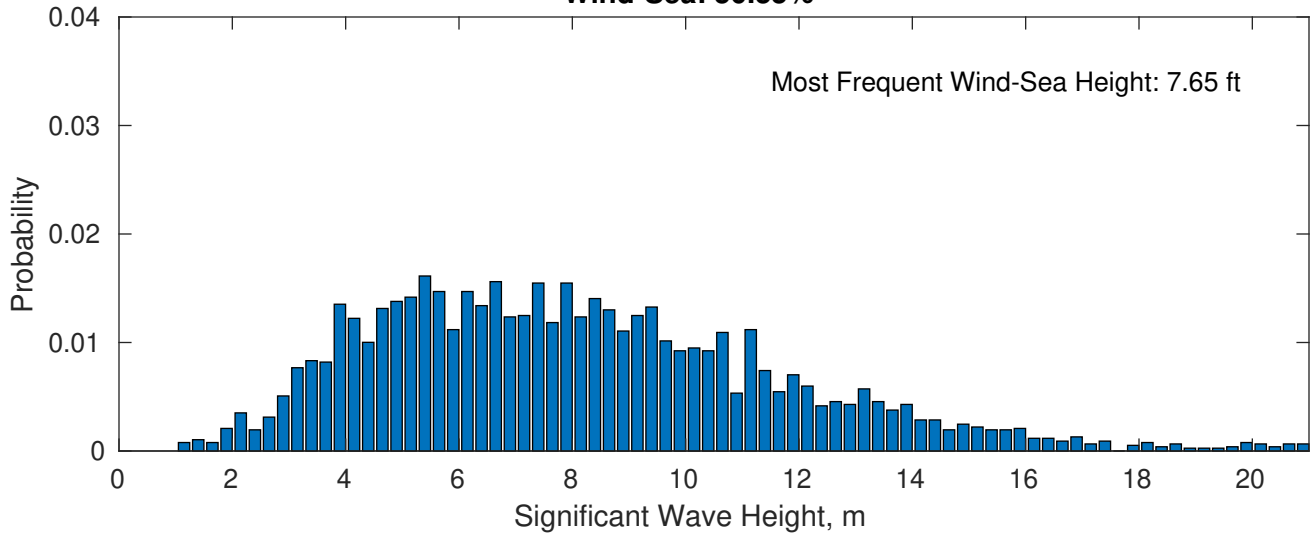
### UK Cable Route GT - Berwick-upon-Tweed March



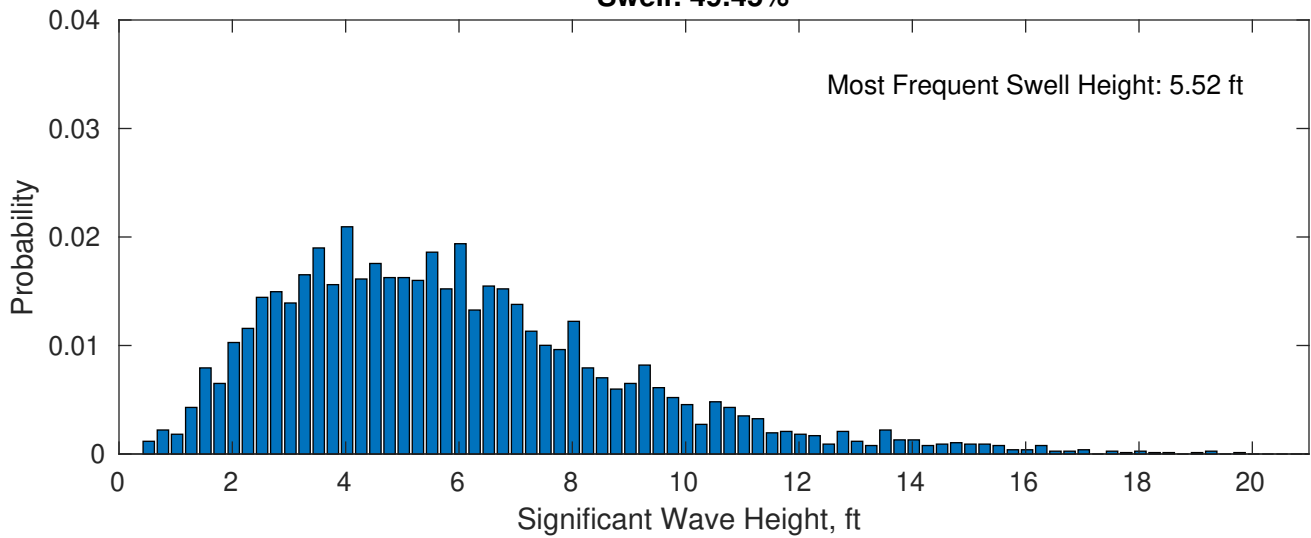
**March Wave Height PDF: 1979 - 2015**



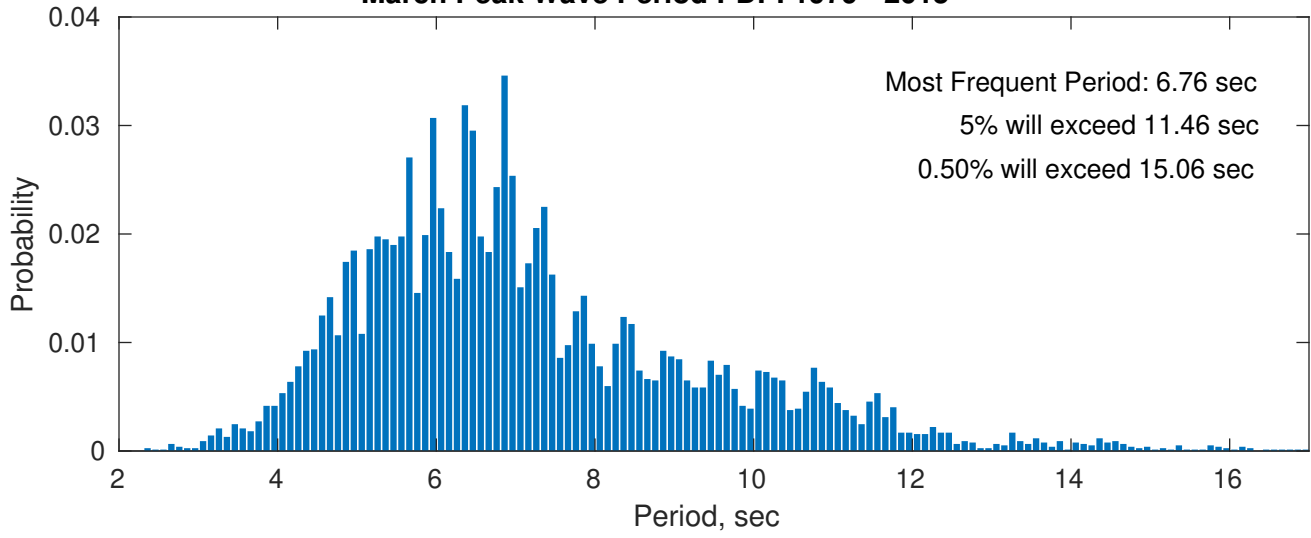
**Wind-Sea: 50.55%**



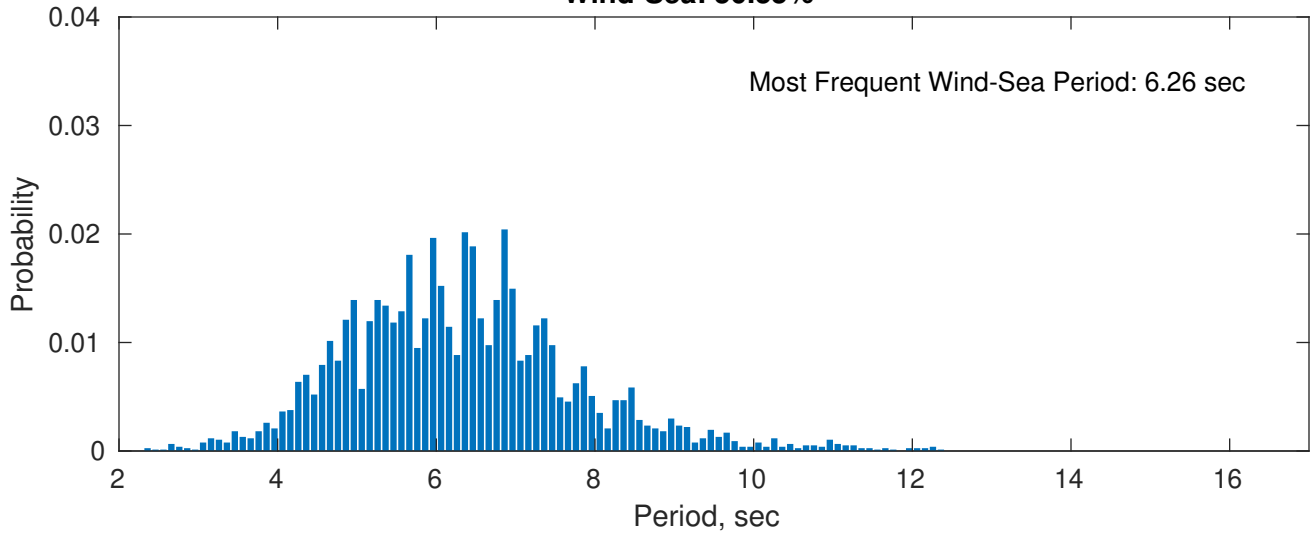
**Swell: 49.45%**



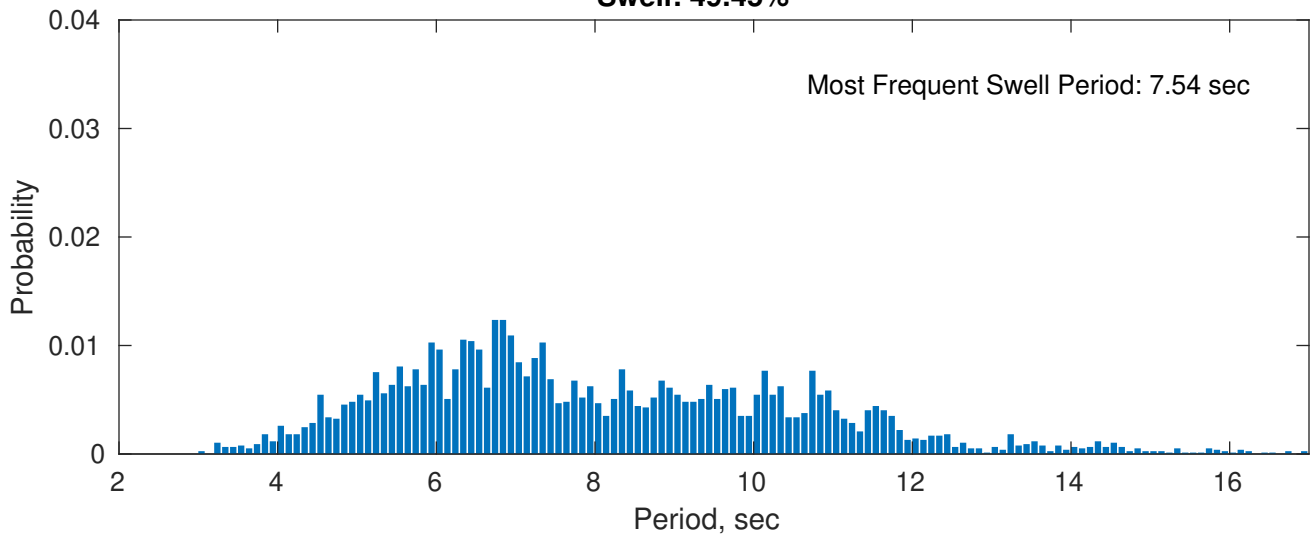
### March Peak Wave Period PDF: 1979 - 2015



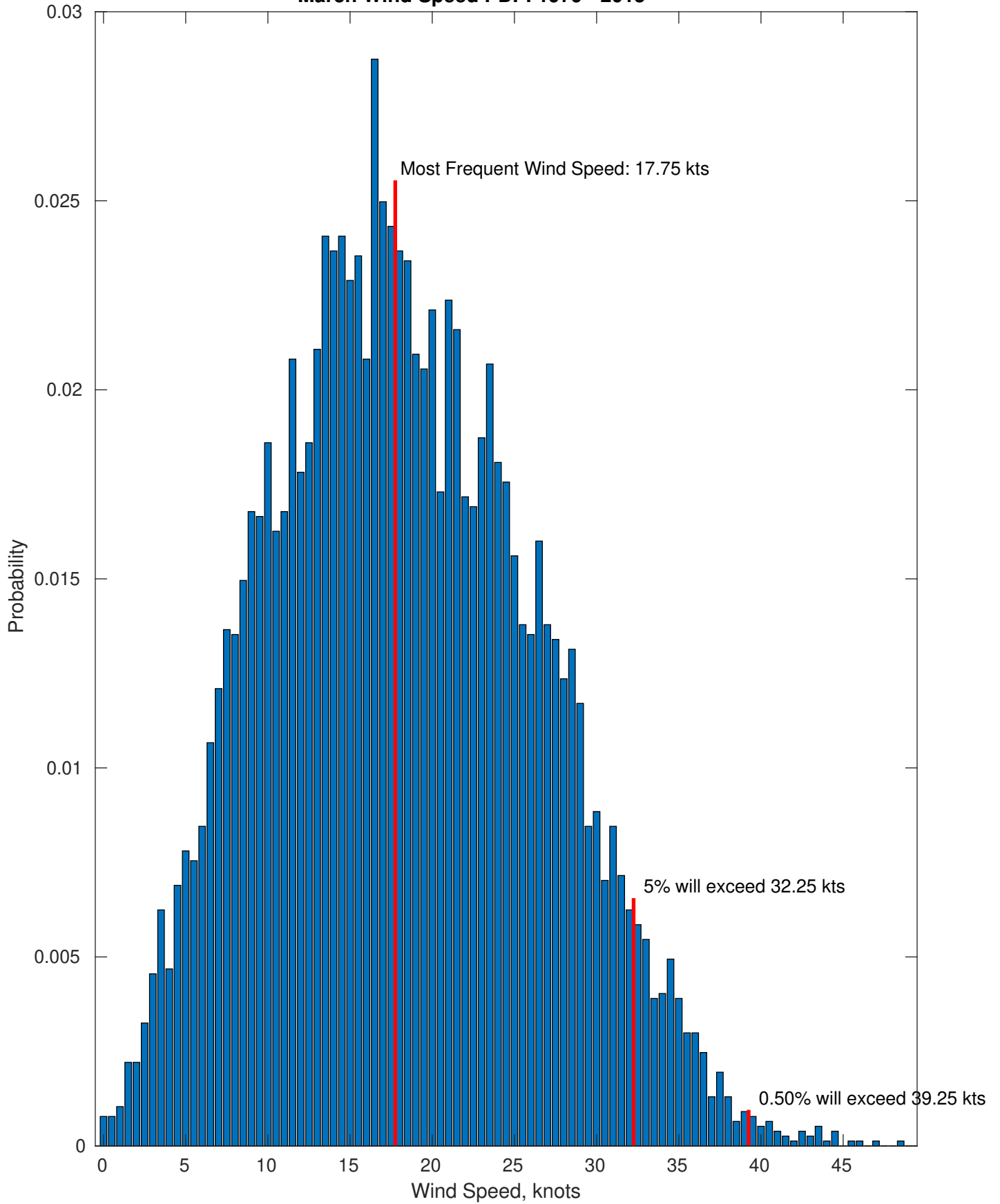
### Wind-Sea: 50.55%



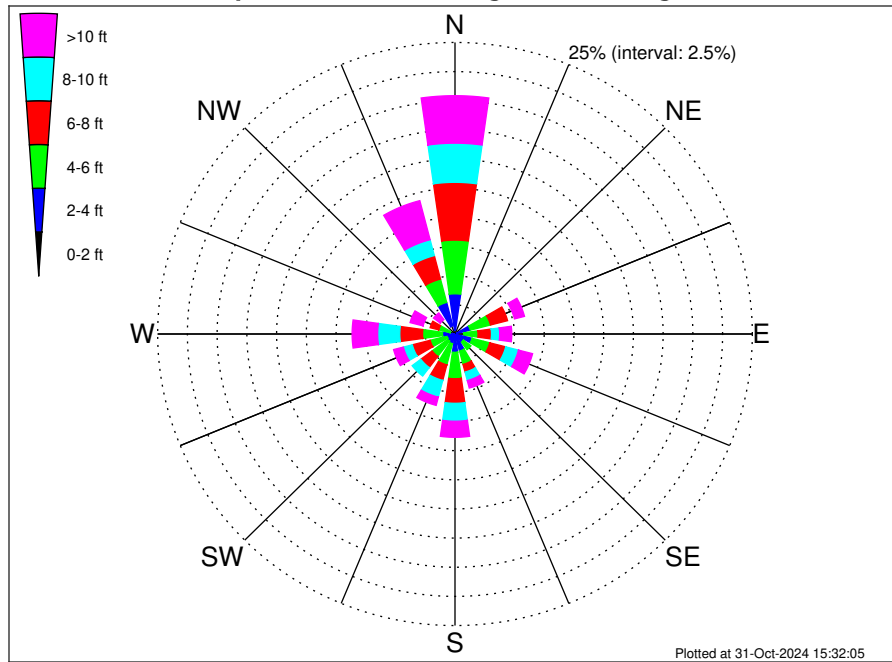
### Swell: 49.45%



March Wind Speed PDF: 1979 - 2015



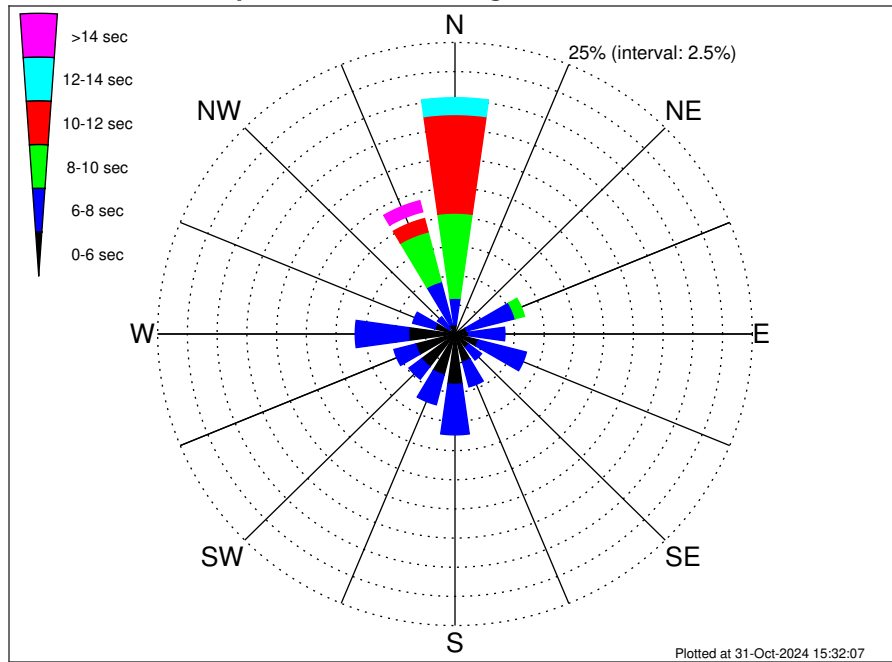
**UK Cable Route GT - Berwick-upon-Tweed Climatological WaveHeight Rose for March: 1979 - 2015**



**Joint Frequency Distribution Table**

	N	NNE	NE	ENE	E	ESE	SE	SSE	S	SSW	SW	WSW	W	WNW	NW	NNW	Total
calm	0.01	0.01	0.01	0.01	0.03	•	•	•	•	•	•	•	•	•	•	0.21	0.29
1 - 2 ft	0.34	0.01	0.12	0.13	0.14	0.20	0.13	0.25	0.16	0.07	0.07	0.07	0.07	0.04	•	0.52	2.29
2 - 4 ft	3.10	0.31	0.23	1.18	0.57	1.29	0.75	1.26	1.42	0.79	0.70	0.64	0.99	0.38	0.27	2.07	15.96
4 - 6 ft	4.60	0.42	0.42	1.76	1.20	1.53	0.79	1.18	2.26	1.87	1.64	1.46	1.68	1.00	0.52	2.07	24.40
6 - 8 ft	4.96	0.20	0.17	1.48	1.13	1.39	0.43	0.68	2.11	1.38	1.20	1.55	1.91	0.74	0.39	2.08	21.79
8 - 10 ft	3.36	0.07	0.13	0.60	0.69	1.11	0.30	0.75	1.53	1.48	0.91	0.78	1.86	0.61	0.36	1.40	15.95
10 - 12 ft	1.60	0.05	0.05	0.31	0.46	0.57	0.29	0.34	0.88	0.51	0.20	0.60	1.46	0.62	0.29	1.26	9.48
12 - 14 ft	0.87	0.01	0.05	0.25	0.44	0.40	0.10	0.25	0.35	0.16	0.10	0.21	0.35	0.31	0.25	1.03	5.14
14 - 16 ft	0.79	0.03	0.05	0.16	0.12	0.16	0.01	0.05	0.12	0.07	0.03	0.01	0.21	0.14	0.05	0.64	2.63
16 - 18 ft	0.27	0.01	0.01	0.16	•	0.04	•	0.03	0.03	•	0.01	•	0.12	0.01	0.05	0.29	1.03
> 18 ft	0.53	0.05	•	•	•	0.05	•	•	•	•	0.01	0.03	0.01	0.04	0.08	0.25	1.05
Total	20.43	1.17	1.25	6.04	4.77	6.74	2.81	4.79	8.86	6.32	4.86	5.33	8.65	3.90	2.26	11.81	100.00

**UK Cable Route GT - Berwick-upon-Tweed Climatological WavePeriod Rose for March: 1979 - 2015**

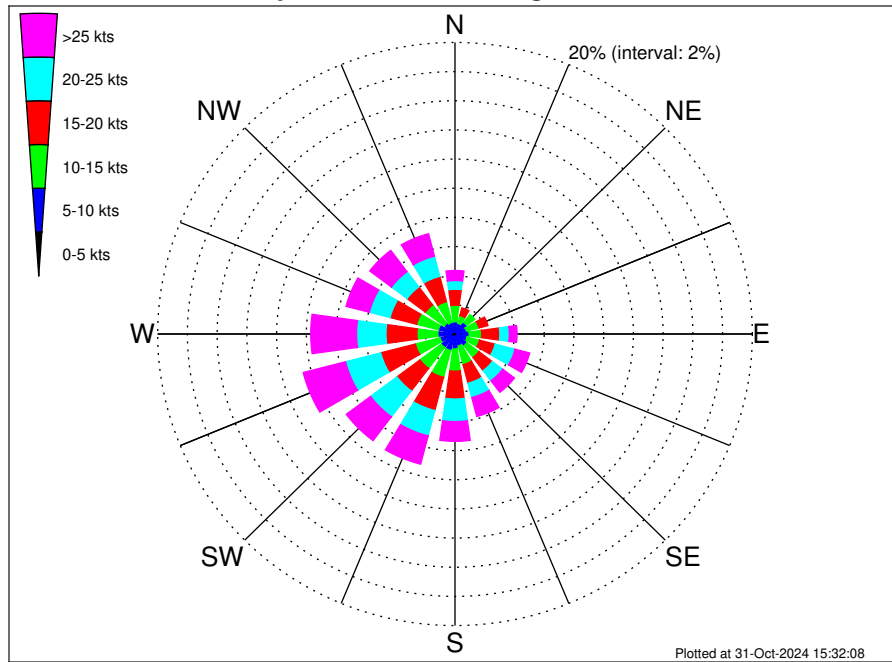


**Joint Frequency Distribution Table**

	N	NNE	NE	ENE	E	ESE	SE	SSE	S	SSW	SW	WSW	W	WNW	NW	NNW	Total
calm	•	•	•	•	•	•	•	•	•	•	•	•	•	•	•	•	•
1 - 2 sec	•	•	•	•	•	•	•	•	•	•	•	•	•	•	•	•	•
2 - 4 sec	0.04	0.04	0.10	0.18	0.17	0.08	0.18	0.25	0.20	0.33	0.29	0.17	0.13	0.03	0.05	0.04	2.26
4 - 6 sec	0.74	0.46	0.34	0.83	0.99	1.95	1.26	2.25	4.12	3.29	3.23	3.25	3.77	1.73	0.55	0.81	29.57
6 - 8 sec	2.29	0.46	0.61	4.21	3.04	4.18	1.35	2.19	4.33	2.65	1.34	1.89	4.49	1.93	1.25	3.79	39.98
8 - 10 sec	7.30	0.22	0.20	0.81	0.57	0.53	0.01	0.10	0.21	0.05	0.01	0.03	0.26	0.22	0.39	4.41	15.32
10 - 12 sec	8.45	•	•	•	•	•	•	•	•	•	•	•	•	•	0.03	1.18	9.66
12 - 14 sec	1.44	•	•	•	•	•	•	•	•	•	•	•	•	•	•	0.60	2.04
14 - 16 sec	0.17	•	•	•	•	•	•	•	•	•	•	•	•	•	•	0.73	0.90
18 - 20 sec	•	•	•	•	•	•	•	•	•	•	•	•	•	•	•	0.26	0.26
22 - 24 sec	•	•	•	•	•	•	•	•	•	•	•	•	•	•	•	•	•
Total	20.43	1.17	1.25	6.04	4.77	6.74	2.81	4.79	8.86	6.32	4.86	5.33	8.65	3.90	2.26	11.81	100.00



**UK Cable Route GT - Berwick-upon-Tweed Climatological Wind Rose for March: 1979 - 2015**



**Joint Frequency Distribution Table**

	N	NNE	NE	ENE	E	ESE	SE	SSE	S	SSW	SW	WSW	W	WNW	NW	NNW	Total
calm	0.01	0.01	0.01	•	0.03	•	0.01	0.01	•	0.01	•	•	0.01	0.03	•	0.01	0.16
0 - 5 kts	0.20	0.10	0.20	0.16	0.12	0.16	0.20	0.27	0.14	0.26	0.23	0.26	0.29	0.18	0.21	0.14	3.11
5 - 10 kts	0.64	0.64	0.78	0.64	0.81	0.69	0.79	0.57	0.88	0.90	0.92	0.78	0.86	0.95	0.70	0.66	12.21
10 - 15 kts	1.13	0.56	0.68	0.87	0.85	0.86	1.01	1.31	1.52	1.90	1.80	1.72	1.40	1.51	1.59	1.47	20.17
15 - 20 kts	1.09	0.53	0.49	0.62	1.22	1.09	1.13	1.31	1.91	2.35	1.94	2.41	2.08	1.85	1.55	1.80	23.39
20 - 25 kts	0.60	0.16	0.12	0.30	0.64	1.38	0.87	1.01	1.55	1.80	2.22	2.45	1.98	1.44	1.31	1.43	19.25
25 - 30 kts	0.35	0.10	0.03	0.25	0.34	0.72	0.72	0.75	0.82	1.25	1.52	1.82	1.66	0.79	0.95	1.11	13.18
30 - 35 kts	0.27	0.05	0.07	0.09	0.17	0.26	0.18	0.44	0.35	0.55	0.39	0.83	0.99	0.53	0.62	0.39	6.19
35 - 40 kts	0.07	0.05	0.05	0.01	0.01	0.03	0.08	0.14	0.16	0.20	0.09	0.23	0.34	0.20	0.20	0.08	1.93
40 - 45 kts	•	0.01	•	•	•	0.01	0.01	•	0.03	0.01	0.04	0.04	0.08	0.08	0.04	0.01	0.36
45 - 50 kts	•	•	•	•	•	•	•	•	•	•	•	0.01	0.01	0.01	0.01	•	0.05
Total	4.36	2.22	2.42	2.94	4.18	5.19	5.01	5.84	7.36	9.22	9.16	10.55	9.70	7.57	7.18	7.10	100.00