

UK Cable Route GT - Berwick-upon-Tweed - May

Latitude: 55.81 N Longitude: 1.35 E

Weather Days

Wave Height > 6.0 ft Mean: 7.7 days Range: 4.8 - 10.7 days p50:8 days p75:6 days p90:3.5 days

Wave Height > 7.0 ft Mean: 4.9 days Range: 2.7 - 7.1 days p50:5 days p75:4 days p90:1.5 days

Wave Height > 8.0 ft Mean: 2.9 days Range: 1.4 - 4.4 days p50:3 days p75:2 days p90:1 days

Wind Speed > 15.0 knots Mean: 12.0 days Range: 8.7 - 15.4 days p50:12.5 days p75:10.5 days p90:8 days

Wind Speed > 20.0 knots Mean: 5.0 days Range: 2.7 - 7.3 days p50:5 days p75:4 days p90:2 days

Wind Speed > 25.0 knots Mean: 1.2 days Range: 0.2 - 2.2 days p50:1 days p75:0.5 days p90:0.5 days

Working Window

Wave Height < 6.0 ft
A 1 day or longer window will statistically occur 4.6 times per month
A 2 day or longer window will statistically occur 3.4 times per month
A 3 day or longer window will statistically occur 2.5 times per month

Wave Height < 7.0 ft
A 1 day or longer window will statistically occur 4.2 times per month
A 2 day or longer window will statistically occur 3.5 times per month
A 3 day or longer window will statistically occur 2.8 times per month

Wave Height < 8.0 ft
A 1 day or longer window will statistically occur 3.6 times per month
A 2 day or longer window will statistically occur 3.1 times per month
A 3 day or longer window will statistically occur 2.7 times per month

Waves

Mean Height: 4 - 6 ft

The wave heights will occasionally reach 12 - 14 ft, but rarely higher.

Mean Period: 6 - 8 sec

The wave periods will occasionally reach 12 - 14 sec, but rarely longer.

Principle Direction, from: N

WindSea/Swell: 38% / 62%

Winds

Mean Speed: 10 - 15 kts

The winds will occasionally reach 25 - 30 kts, but rarely greater.

Principle Direction, from: NNW

Currents

Mean Speed: 0.01-0.25 kts

The currents will occasionally reach 0.50-0.75 kts, but rarely greater.

Principle Direction, to: ESE

Weather Days

Current Speed > 1.0 knots Mean: 0.1 days Range: 0.0 - 0.3 days p50:1 days p75:1 days p90:1 days

Current Speed > 1.5 knots Mean: 0.0 days Range: 0.0 - 0.0 days p50:1 days p75:1 days p90:1 days

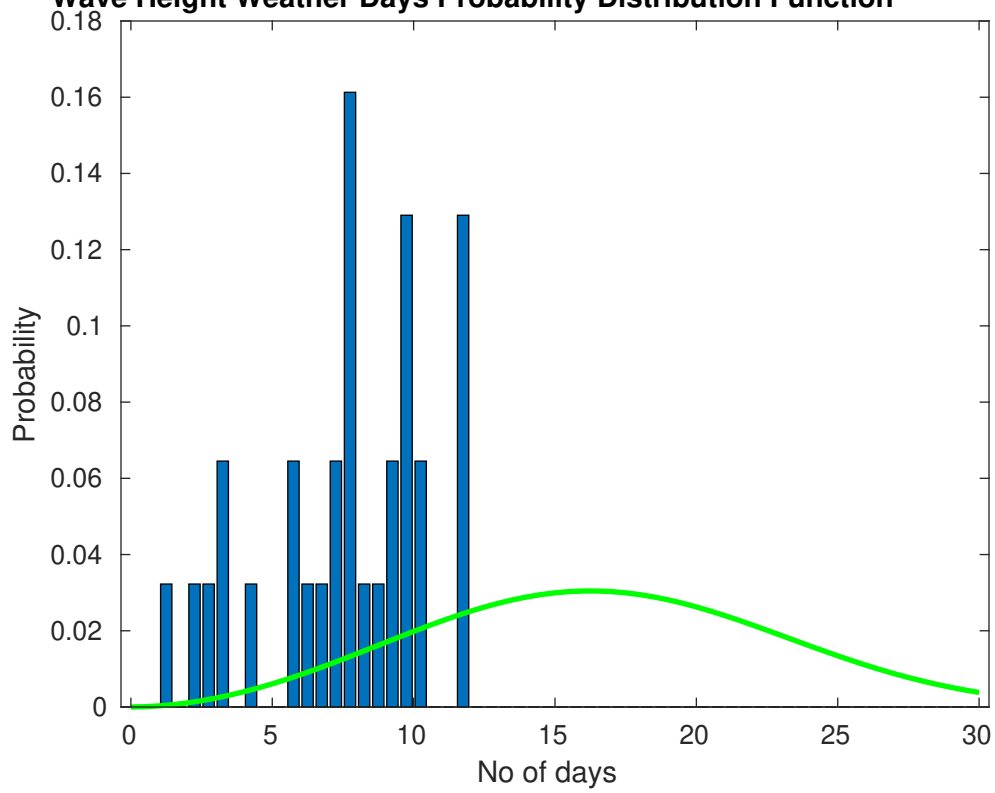
Current Speed > 2.0 knots Mean: 0.0 days Range: 0.0 - 0.0 days p50:1 days p75:1 days p90:1 days

Severe Storms

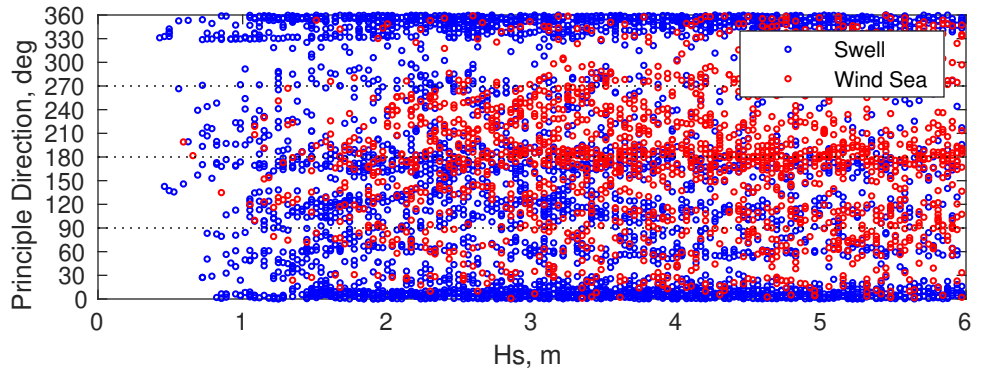
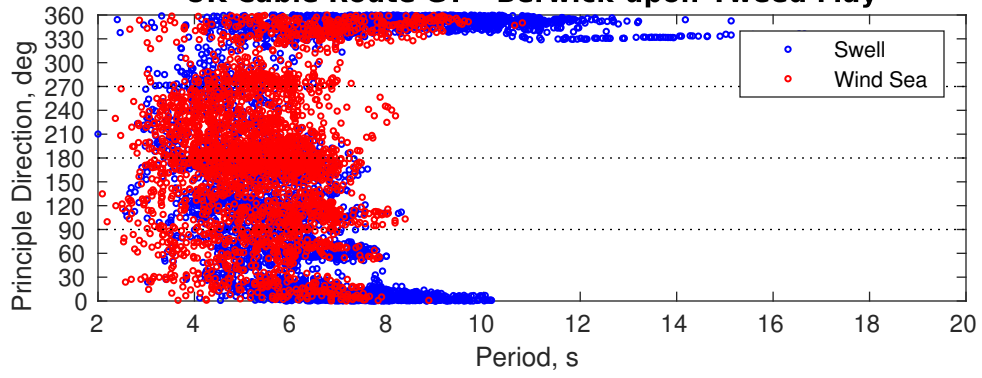
There is a 3 % chance of a storm occurring in the month with winds peaking above 34 kts.

There is a 6 % chance of a storm occurring in the month with waves exceeding 3 m (10 ft) above the mean wave height.

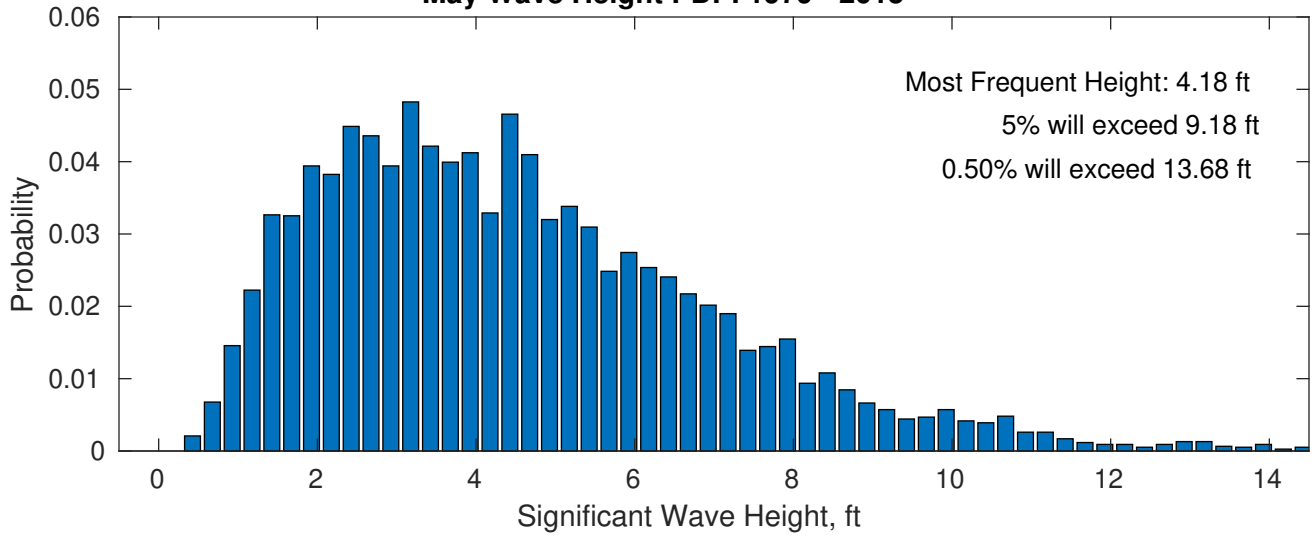
Wave Height Weather Days Probability Distribution Function



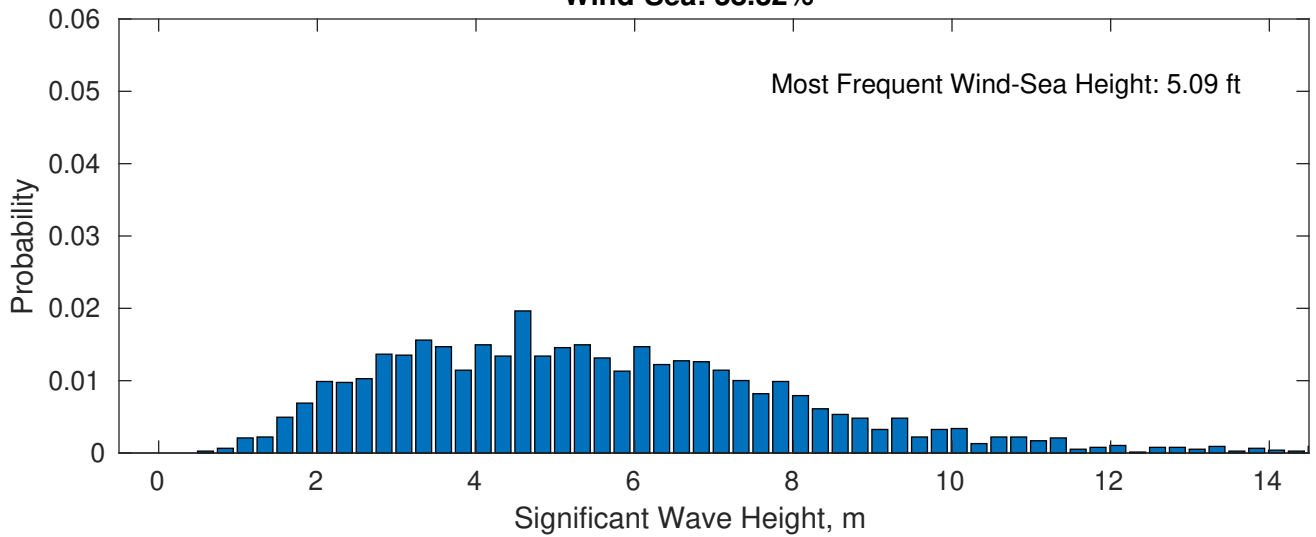
UK Cable Route GT - Berwick-upon-Tweed May



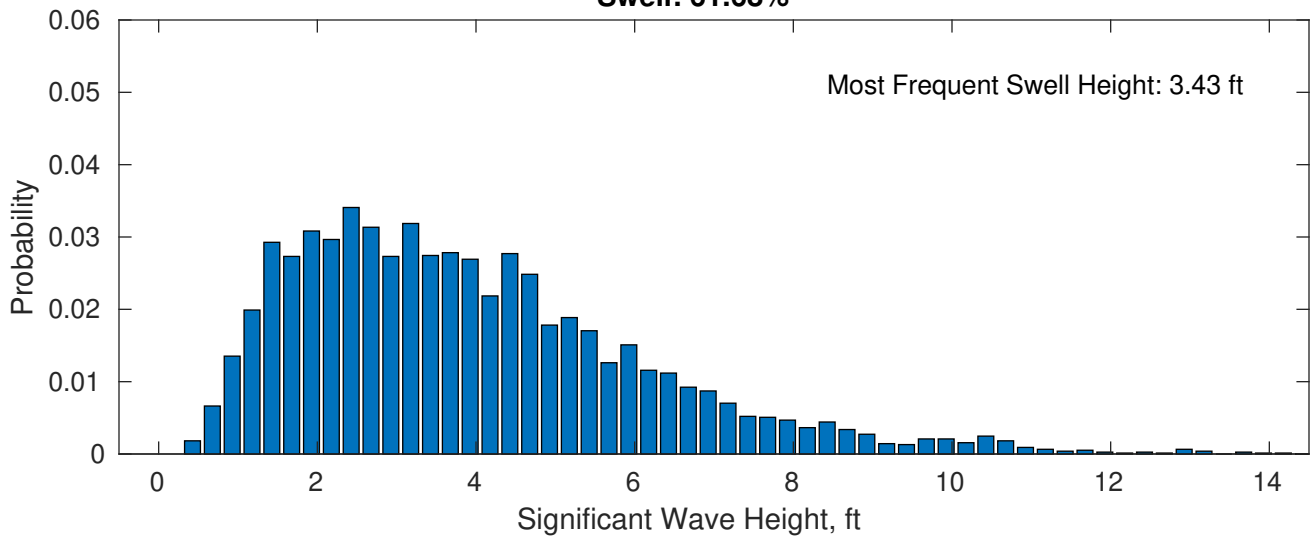
May Wave Height PDF: 1979 - 2015



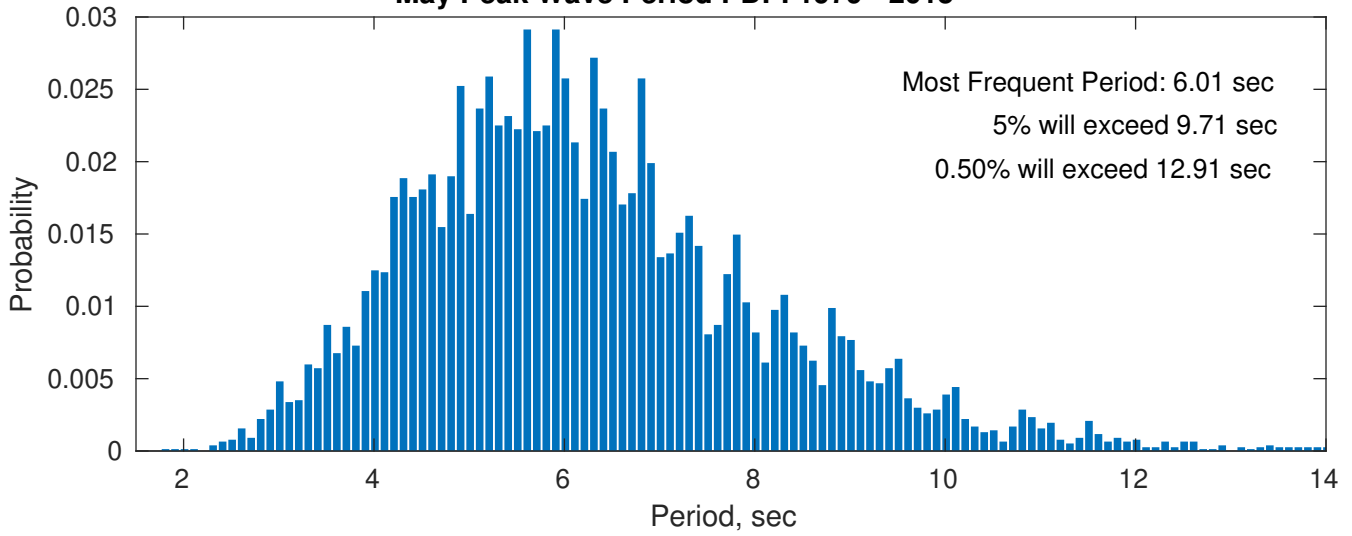
Wind-Sea: 38.32%



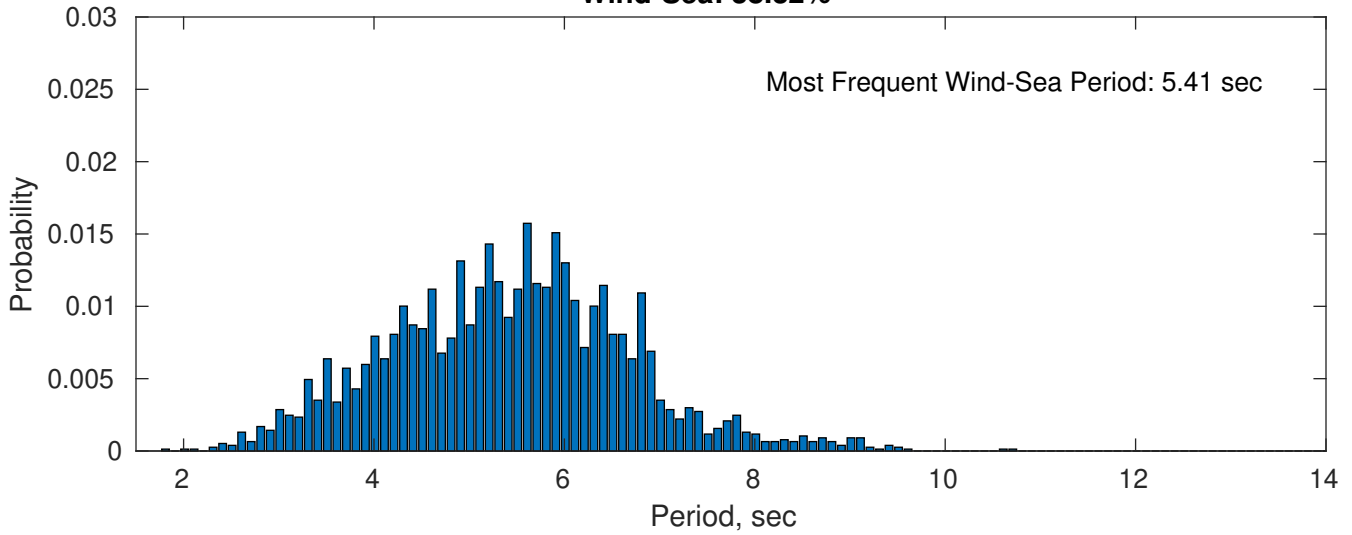
Swell: 61.68%



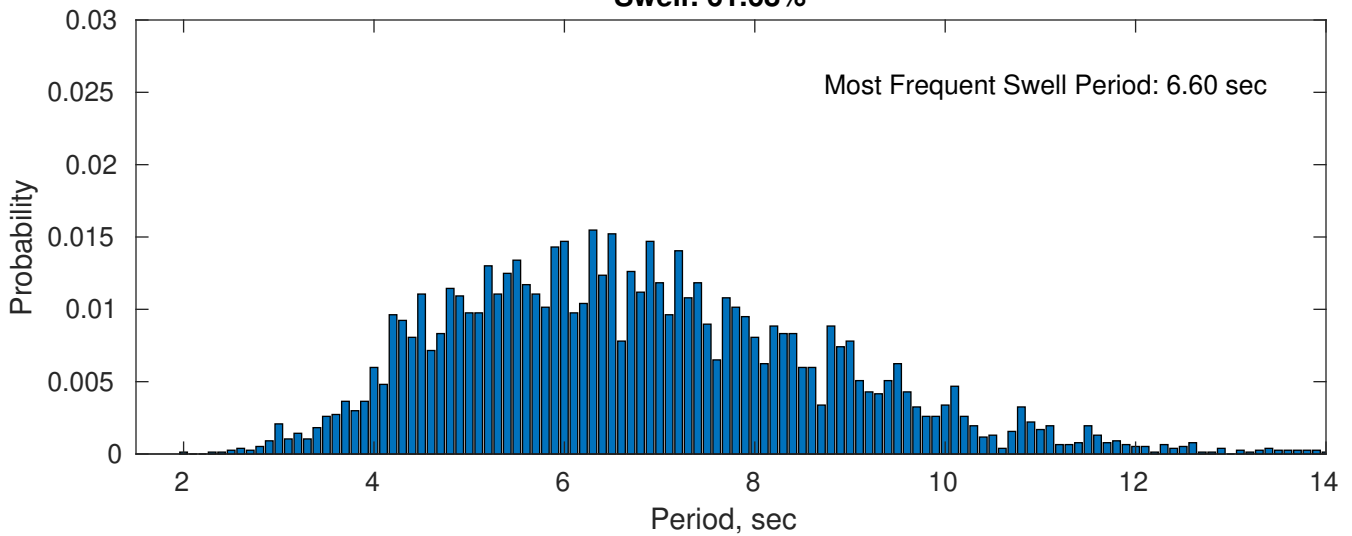
May Peak Wave Period PDF: 1979 - 2015



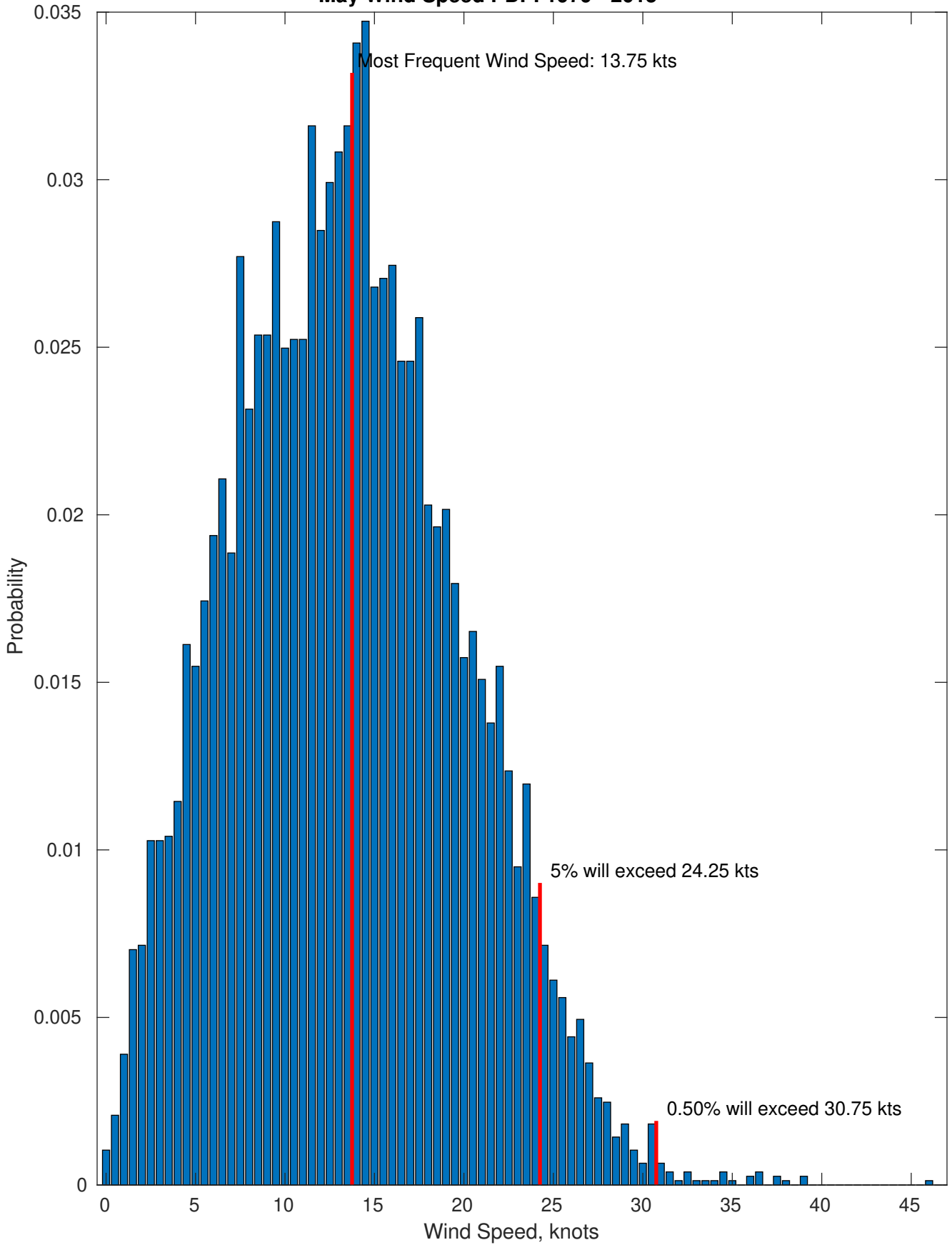
Wind-Sea: 38.32%



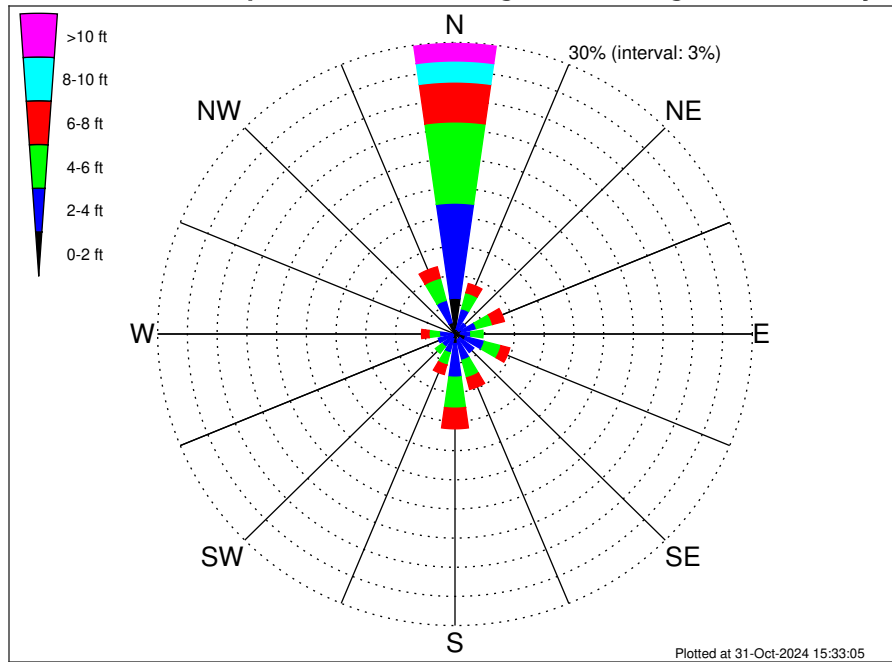
Swell: 61.68%



May Wind Speed PDF: 1979 - 2015



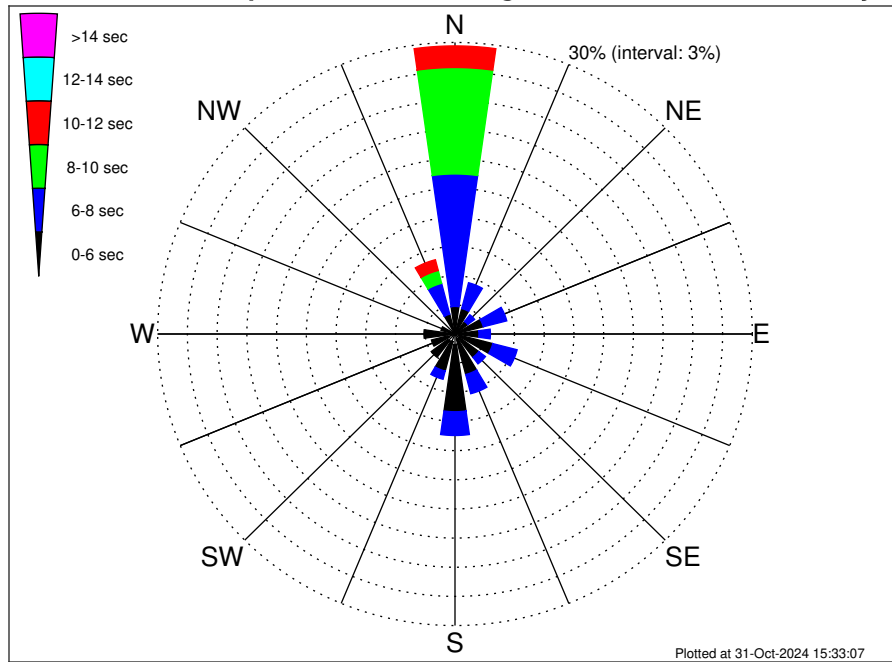
UK Cable Route GT - Berwick-upon-Tweed Climatological WaveHeight Rose for May: 1979 - 2015



Joint Frequency Distribution Table

	N	NNE	NE	ENE	E	ESE	SE	SSE	S	SSW	SW	WSW	W	WNW	NW	NNW	Total
calm	0.21	0.07	0.04	0.03	0.05	0.03	0.07	0.05	0.09	0.12	0.07	0.04	0.04	•	•	0.29	1.17
1 - 2 ft	3.47	0.44	0.43	0.68	0.51	1.07	0.55	0.59	0.90	0.40	0.26	0.14	0.26	0.16	0.12	0.92	10.89
2 - 4 ft	9.79	2.19	0.88	1.53	1.04	1.98	1.77	2.16	3.46	1.48	1.30	1.56	1.27	0.53	0.25	2.37	33.57
4 - 6 ft	8.35	1.70	0.69	1.68	1.24	1.74	0.72	1.86	3.19	1.29	0.86	0.43	1.05	0.60	0.26	2.37	28.02
6 - 8 ft	4.11	0.96	0.35	1.24	0.48	0.90	0.57	1.24	2.12	1.01	0.60	0.35	0.75	0.26	0.20	1.20	16.34
8 - 10 ft	2.16	0.34	0.03	0.25	0.14	0.56	0.14	0.35	0.57	0.40	0.18	0.14	0.26	0.09	0.09	0.72	6.43
10 - 12 ft	1.08	0.01	0.07	•	0.09	0.21	0.04	0.10	0.12	0.05	0.04	0.04	0.03	0.01	0.04	0.51	2.43
12 - 14 ft	0.43	•	•	•	0.04	0.05	•	•	•	0.05	0.01	0.03	•	•	•	0.13	0.74
14 - 16 ft	0.25	•	•	•	•	0.03	•	•	•	•	0.01	0.04	•	•	•	•	0.33
16 - 18 ft	0.04	•	•	•	•	•	•	•	•	•	0.01	•	•	•	•	0.04	0.09
> 18 ft	•	•	•	•	•	•	•	•	•	•	•	•	•	•	•	•	•
Total	29.89	5.71	2.48	5.40	3.59	6.56	3.85	6.35	10.44	4.81	3.34	2.77	3.67	1.65	0.95	8.53	100.00

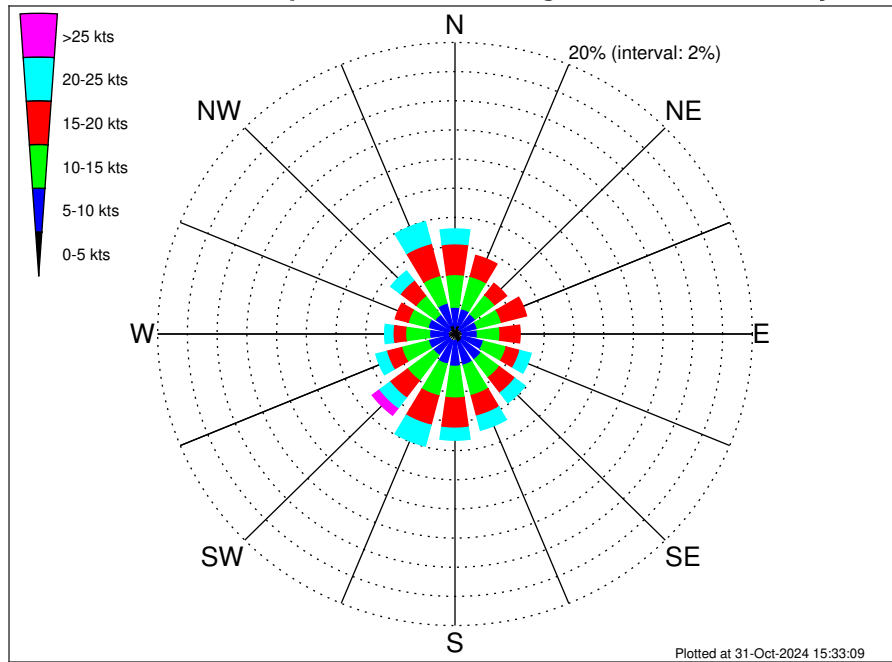
UK Cable Route GT - Berwick-upon-Tweed Climatological WavePeriod Rose for May: 1979 - 2015



Joint Frequency Distribution Table

	N	NNE	NE	ENE	E	ESE	SE	SSE	S	SSW	SW	WSW	W	WNW	NW	NNW	Total
calm	•	•	•	•	•	•	•	•	•	•	•	•	•	•	•	•	•
1 - 2 sec	•	•	•	•	•	•	•	•	0.01	0.01	•	•	•	•	•	•	0.03
2 - 4 sec	0.14	0.31	0.13	0.44	0.42	0.46	0.59	0.53	1.07	0.79	0.91	0.73	0.39	0.21	0.09	0.18	7.39
4 - 6 sec	2.69	2.39	1.48	2.51	2.00	3.49	2.42	3.77	6.92	3.13	2.09	1.73	2.74	1.25	0.55	1.93	41.10
6 - 8 sec	13.63	2.74	0.87	2.45	1.16	2.54	0.85	2.04	2.45	0.87	0.33	0.29	0.53	0.20	0.31	3.28	34.52
8 - 10 sec	10.95	0.26	•	•	0.01	0.08	•	•	•	•	0.01	0.03	•	•	•	1.37	12.71
10 - 12 sec	2.22	•	•	•	•	•	•	•	•	•	•	•	•	•	•	1.14	3.37
12 - 14 sec	0.22	•	•	•	•	•	•	•	•	•	•	•	•	•	•	0.43	0.65
14 - 16 sec	0.03	•	•	•	•	•	•	•	•	•	•	•	•	•	•	0.18	0.21
18 - 20 sec	•	•	•	•	•	•	•	•	•	•	•	•	•	•	•	0.03	0.03
22 - 24 sec	•	•	•	•	•	•	•	•	•	•	•	•	•	•	•	•	•
Total	29.89	5.71	2.48	5.40	3.59	6.56	3.85	6.35	10.44	4.81	3.34	2.77	3.67	1.65	0.95	8.53	100.00

UK Cable Route GT - Berwick-upon-Tweed Climatological Wind Rose for May: 1979 - 2015



Joint Frequency Distribution Table

	N	NNE	NE	ENE	E	ESE	SE	SSE	S	SSW	SW	WSW	W	WNW	NW	NNW	Total
calm	0.04	0.03	•	0.04	0.03	0.03	0.05	0.01	0.01	0.03	0.03	0.03	•	•	•	•	0.31
0 - 5 kts	0.38	0.59	0.42	0.43	0.48	0.48	0.52	0.59	0.44	0.48	0.46	0.46	0.48	0.46	0.40	0.61	7.66
5 - 10 kts	1.43	1.18	1.29	1.08	1.00	1.47	1.60	1.61	1.77	1.63	1.34	1.37	1.24	1.42	1.26	1.57	22.26
10 - 15 kts	2.24	2.29	1.64	1.68	1.52	1.59	1.56	2.15	2.17	2.25	2.17	1.86	1.61	1.38	1.61	1.95	29.67
15 - 20 kts	2.11	1.48	1.00	1.74	1.35	0.95	1.31	1.46	2.07	2.08	1.48	1.05	0.85	0.90	1.33	2.28	23.44
20 - 25 kts	1.01	0.34	0.48	0.40	0.39	0.78	0.86	1.00	0.82	1.48	0.94	0.74	0.56	0.46	0.81	1.55	12.62
25 - 30 kts	0.40	0.08	0.03	0.04	0.04	0.16	0.21	0.22	0.22	0.30	0.39	0.40	0.17	0.17	0.13	0.46	3.41
30 - 35 kts	0.03	•	•	•	0.04	0.03	0.03	0.03	0.07	0.05	0.13	0.03	0.01	•	0.01	0.04	0.48
35 - 40 kts	•	•	•	•	0.01	•	•	•	•	0.04	0.04	0.05	•	•	•	•	0.14
40 - 45 kts	•	•	•	•	•	•	•	•	•	•	•	•	•	•	•	•	•
45 - 50 kts	•	•	•	•	•	•	•	•	•	•	•	0.01	•	•	•	•	0.01
Total	7.64	5.98	4.85	5.41	4.86	5.48	6.14	7.06	7.57	8.34	6.97	6.00	4.92	4.77	5.55	8.45	100.00