

UK Cable Route GT - Landing - April

Latitude: 53.31 N Longitude: 0.35 E

Weather Days

Wave Height > 6.0 ft Mean: 2.2 days Range: 0.6 - 3.8 days p50:2.5 days p75:1 days p90:0.5 days
Wave Height > 7.0 ft Mean: 1.2 days Range: 0.0 - 2.4 days p50:2.5 days p75:1.5 days p90:0.5 days
Wave Height > 8.0 ft Mean: 0.7 days Range: 0.0 - 1.6 days p50:2 days p75:1 days p90:0.5 days
Wind Speed > 15.0 knots Mean: 10.8 days Range: 7.9 - 13.6 days p50:11 days p75:9 days p90:8 days
Wind Speed > 20.0 knots Mean: 3.8 days Range: 1.9 - 5.7 days p50:4 days p75:3 days p90:1.5 days
Wind Speed > 25.0 knots Mean: 1.1 days Range: 0.2 - 2.0 days p50:1.5 days p75:0.5 days p90:0.5 days

Working Window

Wave Height < 6.0 ft	A 1 day or longer window will statistically occur 2.6 times per month A 2 day or longer window will statistically occur 2.2 times per month A 3 day or longer window will statistically occur 1.9 times per month
Wave Height < 7.0 ft	A 1 day or longer window will statistically occur 1.6 times per month A 2 day or longer window will statistically occur 1.5 times per month A 3 day or longer window will statistically occur 1.3 times per month
Wave Height < 8.0 ft	A 1 day or longer window will statistically occur 1.2 times per month A 2 day or longer window will statistically occur 1.2 times per month A 3 day or longer window will statistically occur 1.1 times per month

Waves

Mean Height: 2 - 4 ft
The wave heights will occasionally reach 10 - 12 ft, but rarely higher.
Mean Period: 4 - 6 sec
The wave periods will occasionally reach 10 - 12 sec, but rarely longer.
Principle Direction, from: N
WindSea/Swell: 41% / 59%

Winds

Mean Speed: 10 - 15 kts
The winds will occasionally reach 30 - 35 kts, but rarely greater.
Principle Direction, from: SSW

Currents

Mean Speed: 0.01-0.25 kts
The currents will occasionally reach 1.00-1.25 kts, but rarely greater.
Principle Direction, to: NNE

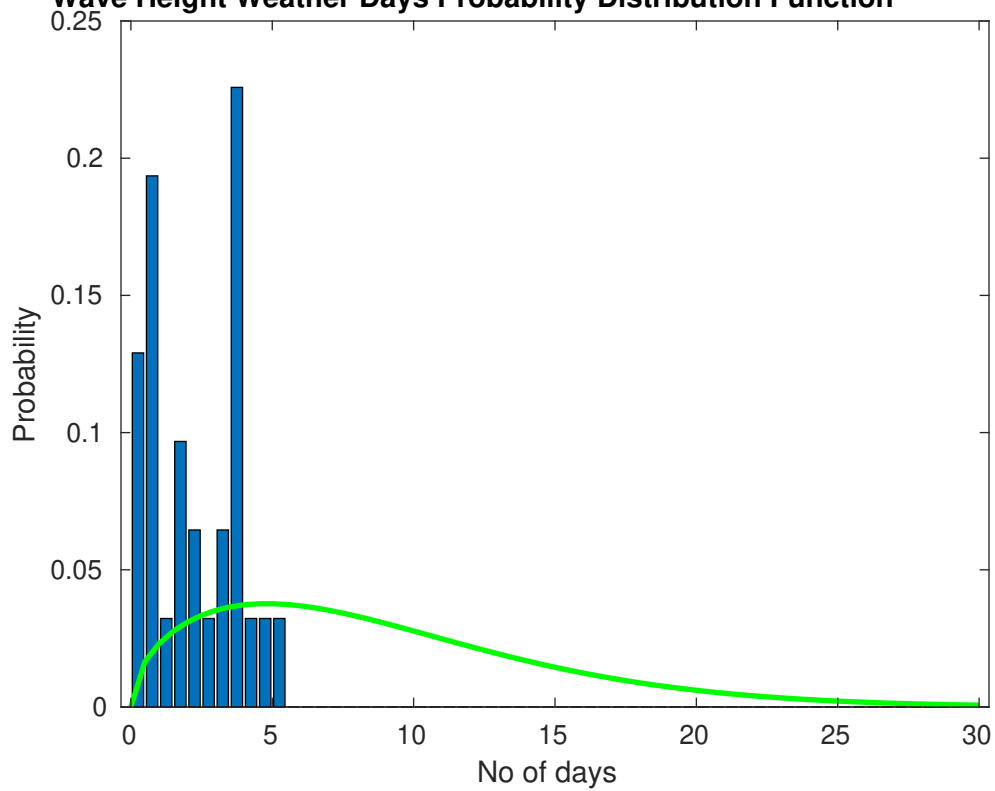
Weather Days

Current Speed > 1.0 knots Mean: 0.2 days Range: 0.0 - 0.6 days p50:1 days p75:1 days p90:1 days
Current Speed > 1.5 knots Mean: 0.0 days Range: 0.0 - 0.0 days p50:1 days p75:1 days p90:1 days
Current Speed > 2.0 knots Mean: 0.0 days Range: 0.0 - 0.0 days p50:1 days p75:1 days p90:1 days

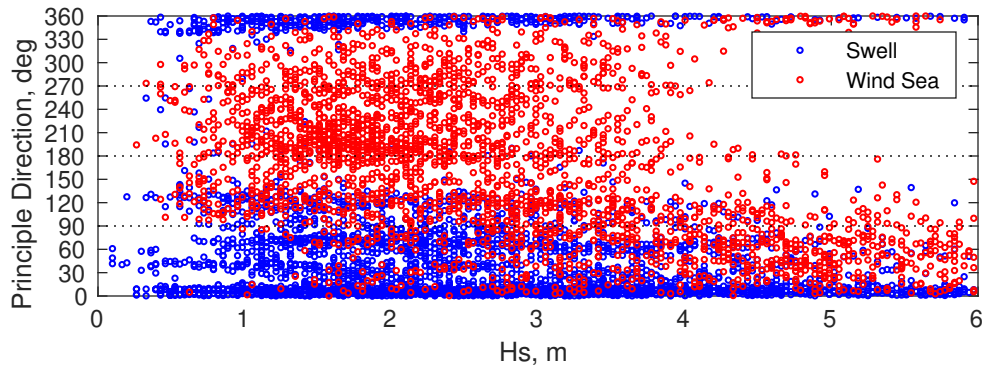
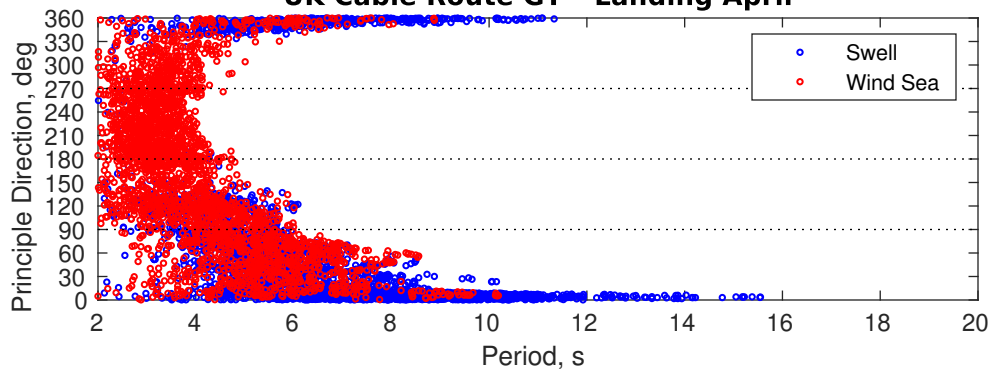
Severe Storms

There is a 6 % chance of a storm occurring in the month with winds peaking above 34 kts.
There is little chance of a storm occurring in the month with waves peaking at 4m (13 ft) or greater.

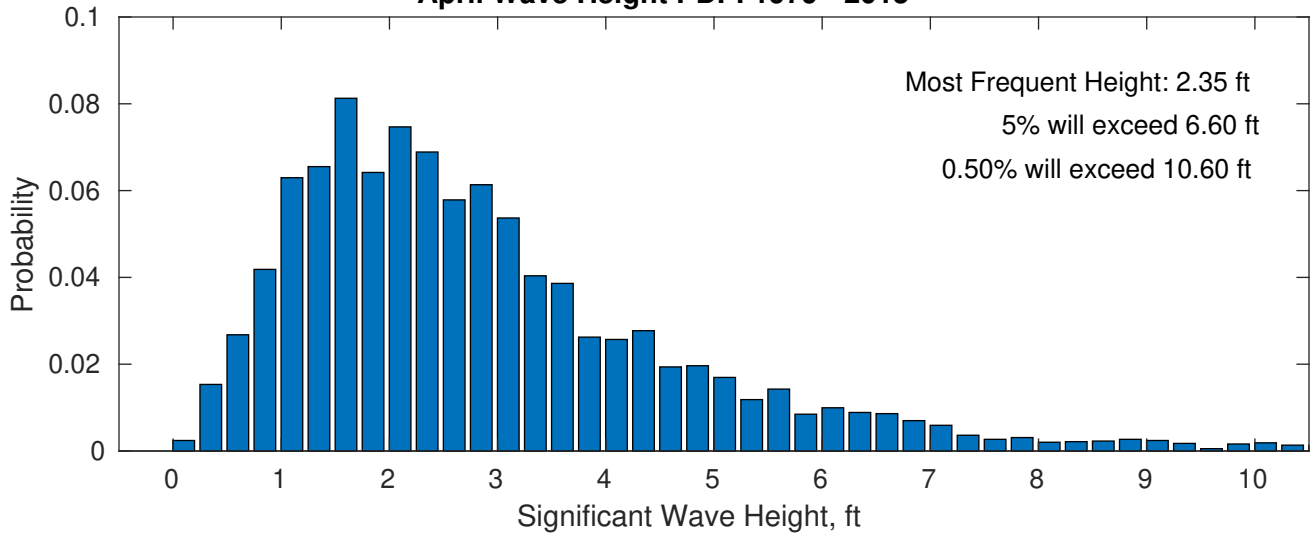
Wave Height Weather Days Probability Distribution Function



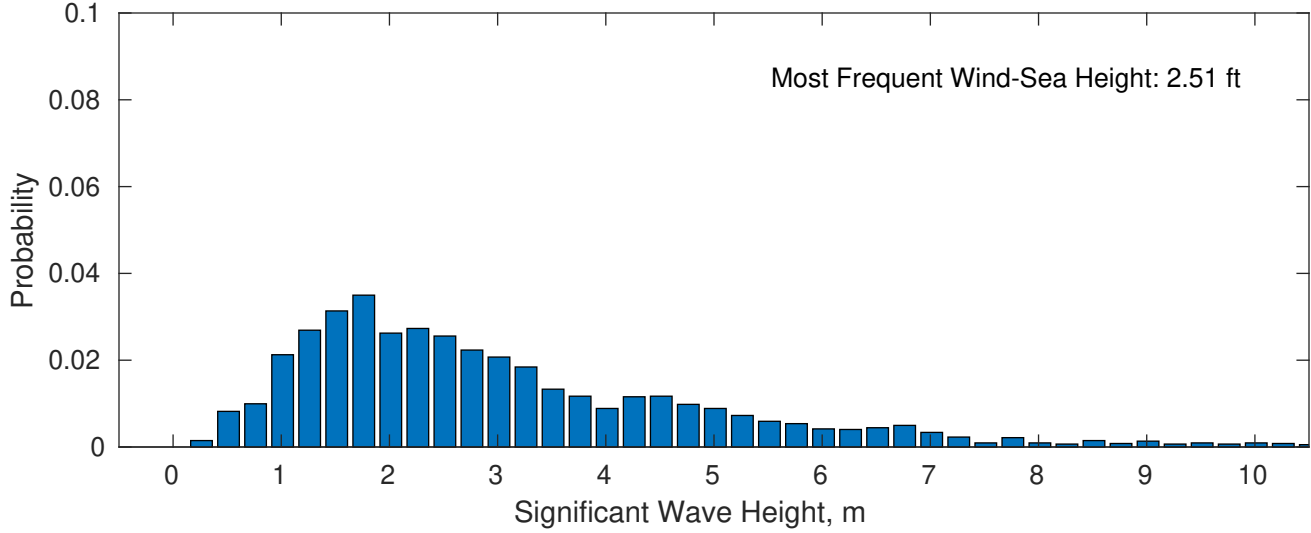
UK Cable Route GT - Landing April



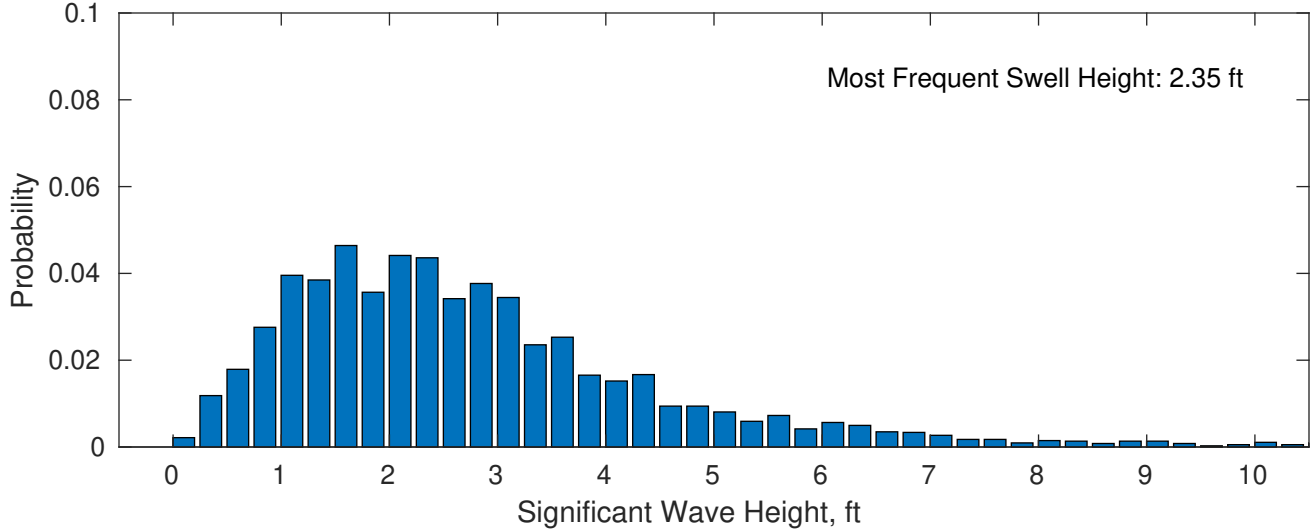
April Wave Height PDF: 1979 - 2015



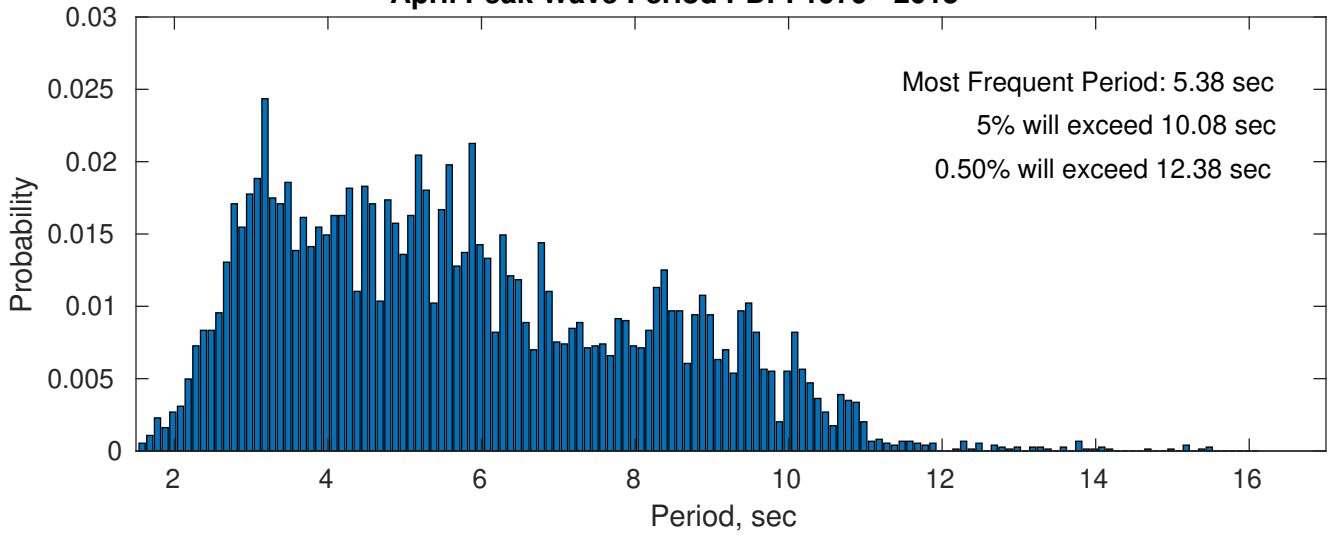
Wind-Sea: 40.82%



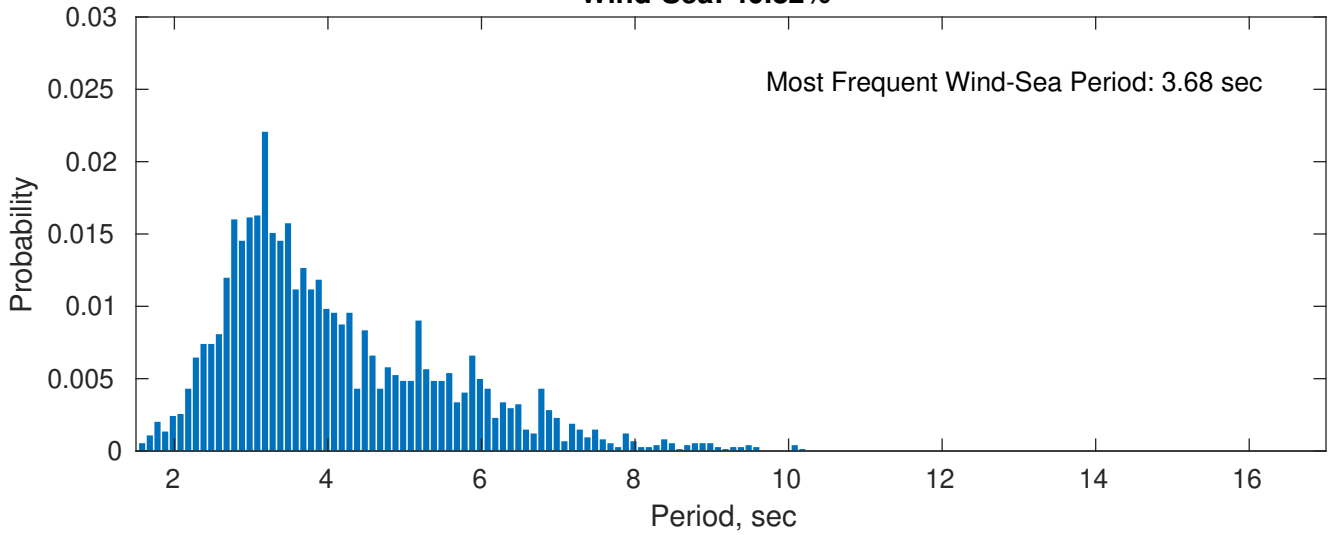
Swell: 59.18%



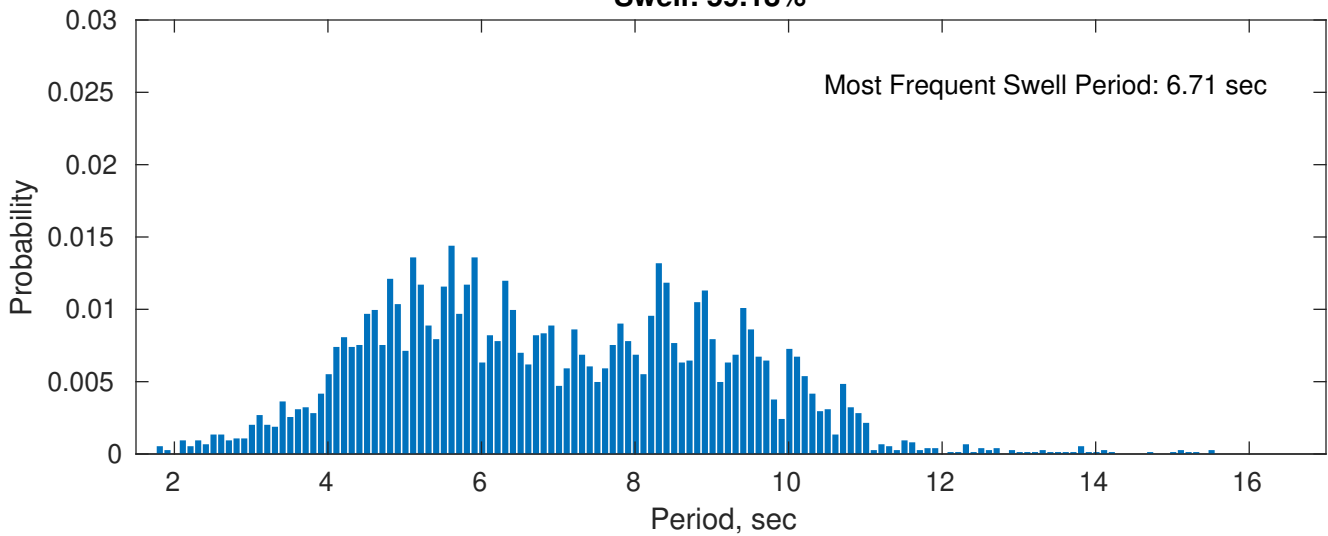
April Peak Wave Period PDF: 1979 - 2015



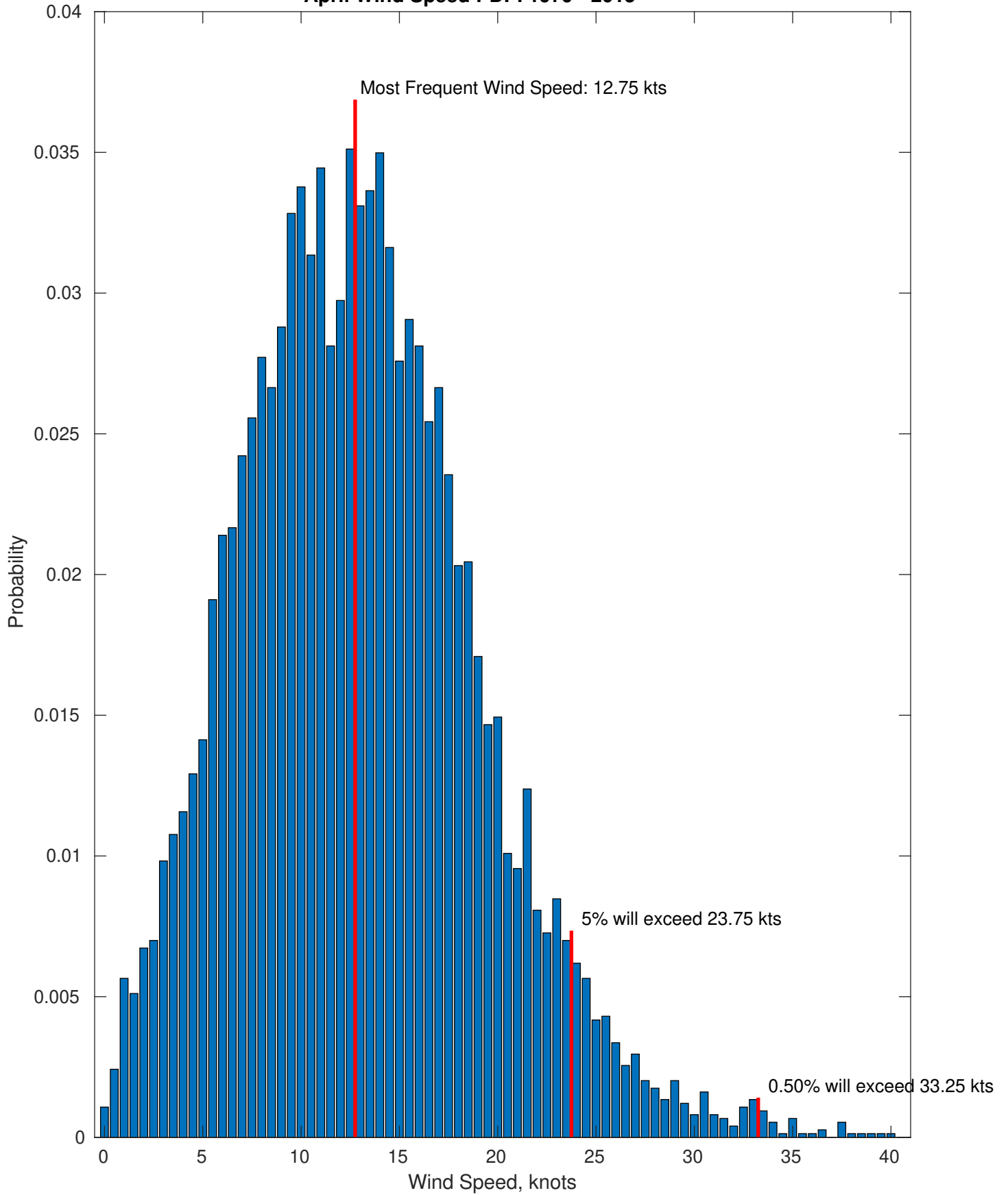
Wind-Sea: 40.82%



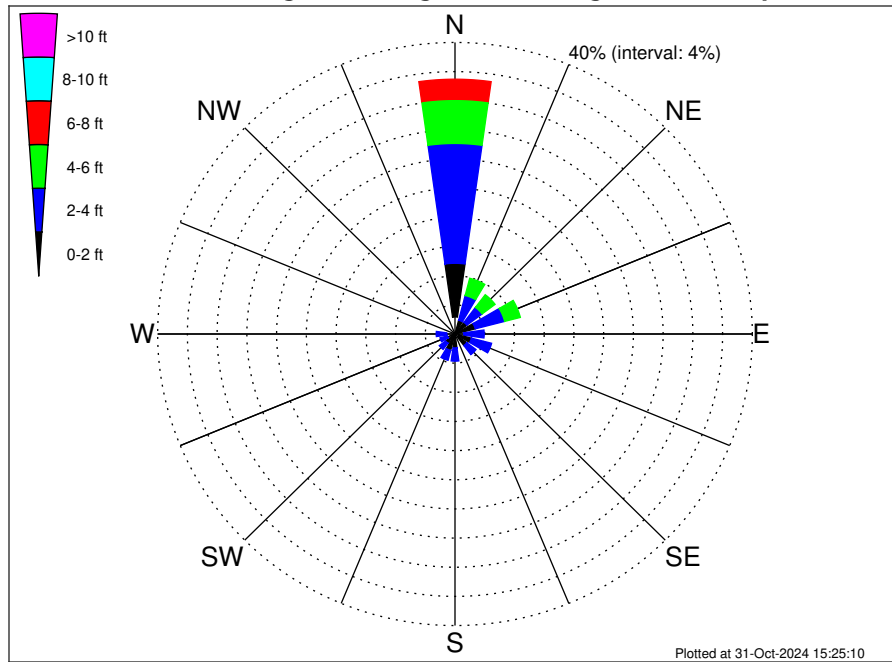
Swell: 59.18%



April Wind Speed PDF: 1979 - 2015



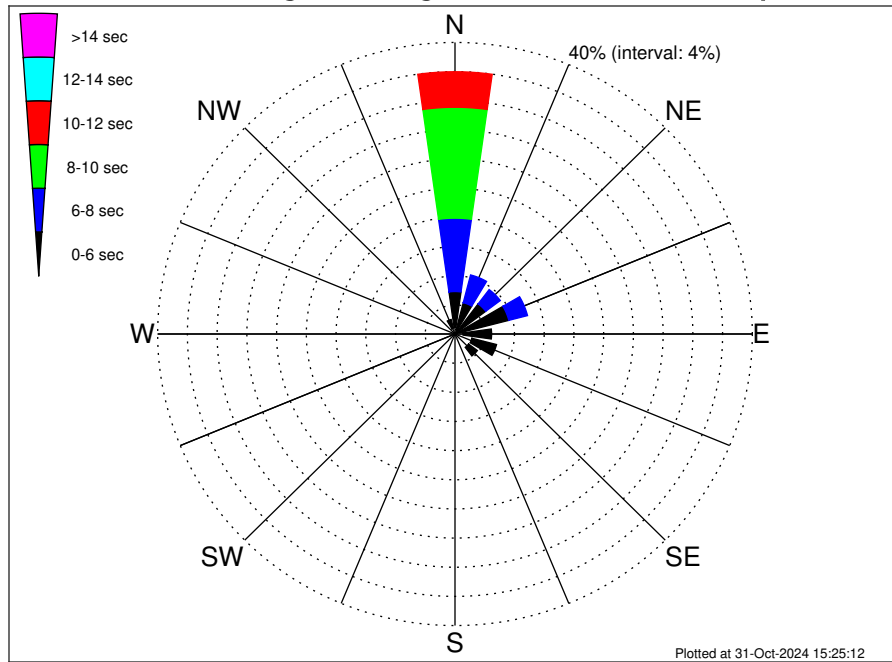
UK Cable Route GT - Landing Climatological WaveHeight Rose for April: 1979 - 2015



Joint Frequency Distribution Table

	N	NNE	NE	ENE	E	ESE	SE	SSE	S	SSW	SW	WSW	W	WNW	NW	NNW	Total
calm	2.34	0.20	0.63	0.31	0.17	0.55	0.62	0.17	0.22	0.24	0.16	0.26	0.27	0.15	0.12	0.48	6.90
1 - 2 ft	7.36	1.75	1.37	2.50	1.00	1.74	1.36	0.59	1.70	2.07	1.41	0.79	0.85	0.61	0.43	0.87	26.40
2 - 4 ft	16.44	3.51	2.57	4.09	2.76	2.80	1.56	0.85	1.82	1.41	1.08	1.04	1.41	0.97	0.75	0.62	43.68
4 - 6 ft	6.05	2.44	2.18	2.18	0.93	0.67	0.19	0.09	0.19	0.03	•	•	0.05	0.03	0.05	0.11	15.19
6 - 8 ft	2.76	0.82	0.63	0.82	0.08	0.07	0.04	•	•	•	•	•	•	•	•	0.07	5.29
8 - 10 ft	0.93	0.20	0.27	0.19	0.01	•	•	•	•	•	•	•	•	•	•	•	1.60
10 - 12 ft	0.61	0.05	0.11	0.08	•	•	•	•	•	•	•	•	•	•	•	•	0.85
12 - 14 ft	0.08	•	0.01	•	•	•	•	•	•	•	•	•	•	•	•	•	0.09
14 - 16 ft	•	•	•	•	•	•	•	•	•	•	•	•	•	•	•	•	•
16 - 18 ft	•	•	•	•	•	•	•	•	•	•	•	•	•	•	•	•	•
> 18 ft	•	•	•	•	•	•	•	•	•	•	•	•	•	•	•	•	•
Total	36.57	8.97	7.78	10.17	4.95	5.83	3.77	1.71	3.92	3.75	2.65	2.09	2.58	1.75	1.36	2.15	100.00

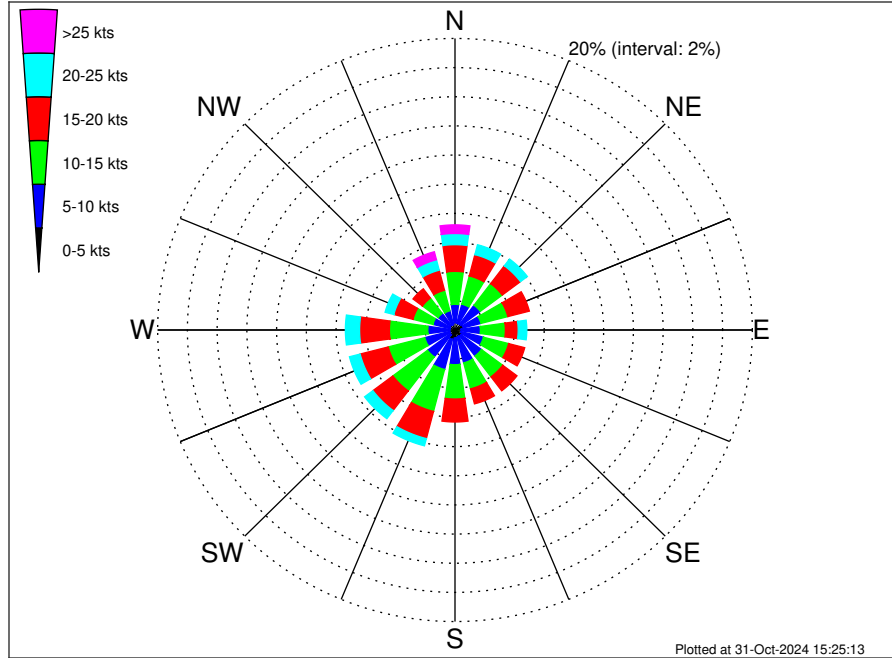
UK Cable Route GT - Landing Climatological WavePeriod Rose for April: 1979 - 2015



Joint Frequency Distribution Table

	N	NNE	NE	ENE	E	ESE	SE	SSE	S	SSW	SW	WSW	W	WNW	NW	NNW	Total
calm	•	•	•	•	•	•	•	•	•	•	•	•	•	•	•	•	•
1 - 2 sec	0.05	0.01	•	•	0.03	0.03	0.07	0.03	0.09	0.05	0.01	0.08	0.08	0.03	0.01	0.03	0.61
2 - 4 sec	0.85	0.58	0.38	0.63	1.06	2.33	2.22	1.35	3.34	3.53	2.62	2.00	2.34	1.56	1.10	0.79	26.68
4 - 6 sec	4.92	3.85	4.80	6.85	3.83	3.42	1.48	0.34	0.48	0.17	0.01	•	0.16	0.16	0.24	1.24	31.97
6 - 8 sec	10.06	3.93	2.45	2.60	0.03	0.05	•	•	•	•	•	•	•	•	•	0.09	19.21
8 - 10 sec	15.22	0.57	0.15	0.09	•	•	•	•	•	•	•	•	•	•	•	•	16.03
10 - 12 sec	4.87	0.04	•	•	•	•	•	•	•	•	•	•	•	•	•	•	4.91
12 - 14 sec	0.43	•	•	•	•	•	•	•	•	•	•	•	•	•	•	•	0.43
14 - 16 sec	0.16	•	•	•	•	•	•	•	•	•	•	•	•	•	•	•	0.16
18 - 20 sec	•	•	•	•	•	•	•	•	•	•	•	•	•	•	•	•	•
22 - 24 sec	•	•	•	•	•	•	•	•	•	•	•	•	•	•	•	•	•
Total	36.57	8.97	7.78	10.17	4.95	5.83	3.77	1.71	3.92	3.75	2.65	2.09	2.58	1.75	1.36	2.15	100.00

UK Cable Route GT - Landing Climatological Wind Rose for April: 1979 - 2015



Joint Frequency Distribution Table

	N	NNE	NE	ENE	E	ESE	SE	SSE	S	SSW	SW	WSW	W	WNW	NW	NNW	Total
calm	0.04	0.05	0.03	0.01	0.03	•	•	0.01	0.01	0.07	0.03	•	0.01	0.03	•	0.03	0.35
0 - 5 kts	0.46	0.42	0.47	0.55	0.39	0.42	0.51	0.47	0.52	0.59	0.38	0.36	0.35	0.31	0.40	0.35	6.96
5 - 10 kts	1.26	1.36	1.63	1.24	1.29	1.56	1.72	1.84	1.84	2.14	1.91	1.74	1.47	1.20	1.02	0.98	24.21
10 - 15 kts	2.26	2.00	1.86	1.87	1.68	1.75	1.79	1.84	2.35	2.97	2.92	2.54	2.58	1.39	1.32	1.45	32.59
15 - 20 kts	1.83	1.51	1.53	1.49	0.86	1.12	1.20	1.06	1.57	1.92	1.68	1.95	2.00	1.33	0.79	1.43	23.29
20 - 25 kts	0.77	0.70	0.58	0.39	0.58	0.39	0.27	0.17	0.47	0.51	0.70	0.74	0.96	0.61	0.39	0.74	8.96
25 - 30 kts	0.52	0.20	0.19	0.11	0.15	0.09	0.05	0.09	0.13	0.13	0.07	0.09	0.13	0.03	0.17	0.39	2.57
30 - 35 kts	0.07	0.17	0.09	0.09	0.01	0.01	•	0.05	0.03	0.03	•	•	0.03	0.01	0.05	0.17	0.83
35 - 40 kts	•	0.08	0.11	0.01	•	•	•	•	•	•	•	•	•	•	0.03	•	0.23
40 - 45 kts	•	•	•	•	•	•	•	•	•	•	•	•	•	•	0.01	•	0.01
45 - 50 kts	•	•	•	•	•	•	•	•	•	•	•	•	•	•	•	•	•
Total	7.21	6.50	6.49	5.77	4.99	5.34	5.54	5.56	6.94	8.37	7.68	7.43	7.53	4.90	4.20	5.54	100.00