

UK Cable Route GT - Landing - August

Latitude: 53.31 N Longitude: 0.35 E

Weather Days

Wave Height > 6.0 ft Mean: 0.5 days Range: 0.0 - 1.3 days p50:30 days p75:1 days p90:0.5 days
Wave Height > 7.0 ft Mean: 0.2 days Range: 0.0 - 0.6 days p50:30 days p75:30 days p90:1 days
Wave Height > 8.0 ft Mean: 0.1 days Range: 0.0 - 0.4 days p50:30 days p75:30 days p90:1 days
Wind Speed > 15.0 knots Mean: 7.2 days Range: 4.3 - 10.2 days p50:8 days p75:5 days p90:4 days
Wind Speed > 20.0 knots Mean: 1.8 days Range: 0.6 - 3.1 days p50:2 days p75:1 days p90:0.5 days
Wind Speed > 25.0 knots Mean: 0.4 days Range: 0.0 - 0.8 days p50:0.5 days p75:0.5 days p90:0.5 days

Working Window

Wave Height < 6.0 ft	A 1 day or longer window will statistically occur 1.4 times per month A 2 day or longer window will statistically occur 1.3 times per month A 3 day or longer window will statistically occur 1.3 times per month
Wave Height < 7.0 ft	A 1 day or longer window will statistically occur 1.1 times per month A 2 day or longer window will statistically occur 1.1 times per month A 3 day or longer window will statistically occur 1.1 times per month
Wave Height < 8.0 ft	A 1 day or longer window will statistically occur 1.1 times per month A 2 day or longer window will statistically occur 1.0 times per month A 3 day or longer window will statistically occur 1.0 times per month

Waves

Mean Height: 1 - 2 ft
The wave heights will occasionally reach 6 - 8 ft, but rarely higher.
Mean Period: 4 - 6 sec
The wave periods will occasionally reach 8 - 10 sec, but rarely longer.
Principle Direction, from: N
WindSea/Swell: 39% / 61%

Winds

Mean Speed: 10 - 15 kts
The winds will occasionally reach 25 - 30 kts, but rarely greater.
Principle Direction, from: SW

Currents

Mean Speed: 0.01-0.25 kts
The currents will occasionally reach 0.75-1.00 kts, but rarely greater.
Principle Direction, to: NNE

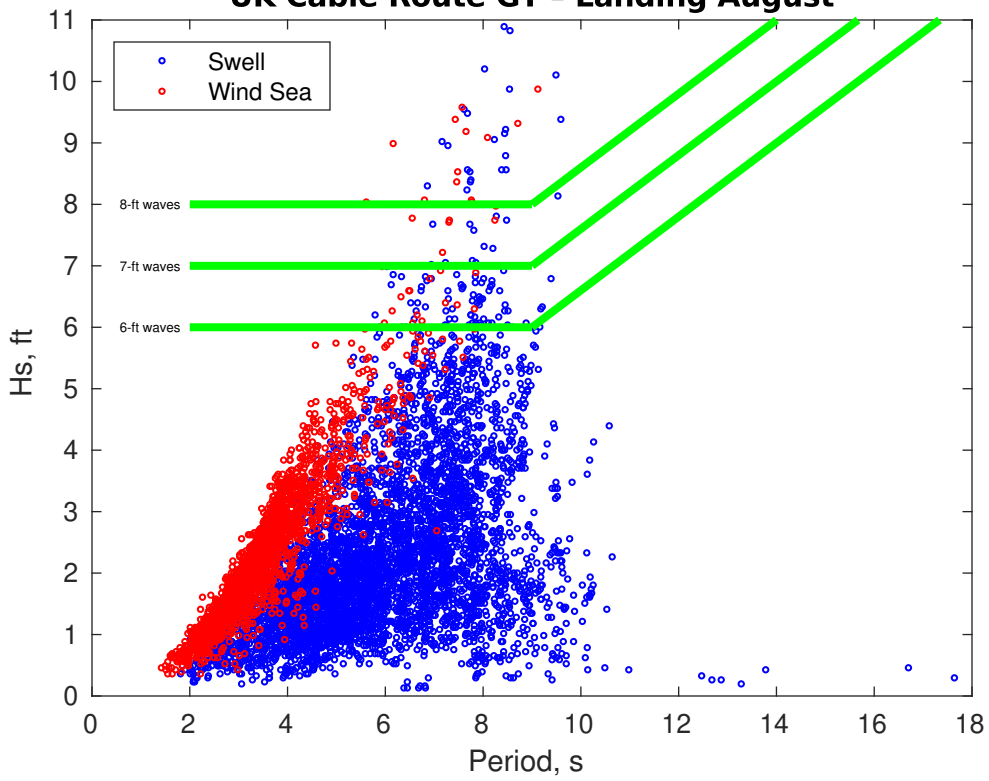
Weather Days

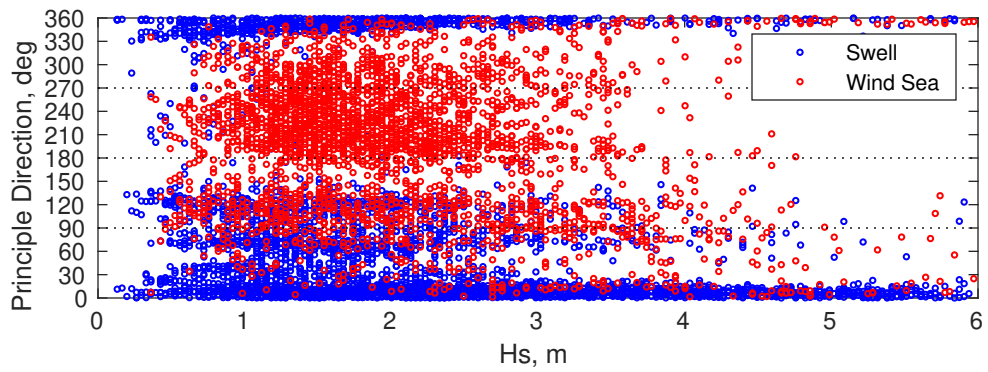
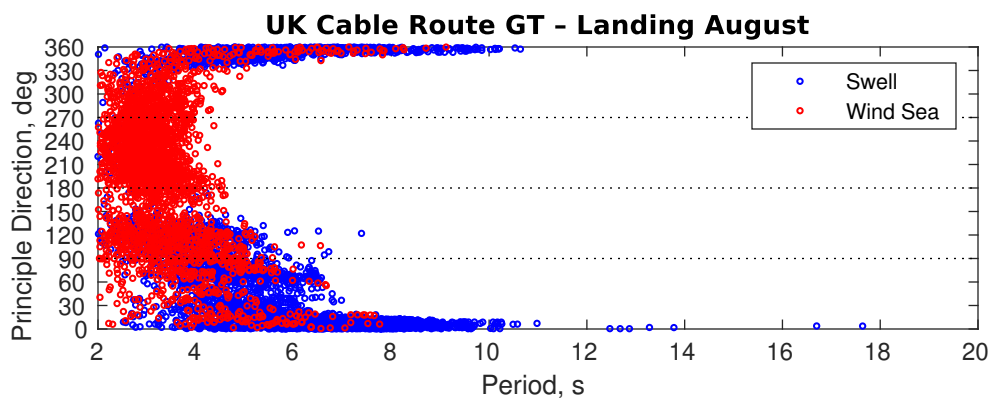
Current Speed > 1.0 knots Mean: 0.1 days Range: 0.0 - 0.3 days p50:1 days p75:1 days p90:1 days
Current Speed > 1.5 knots Mean: 0.0 days Range: 0.0 - 0.0 days p50:1 days p75:1 days p90:1 days
Current Speed > 2.0 knots Mean: 0.0 days Range: 0.0 - 0.0 days p50:1 days p75:1 days p90:1 days

Severe Storms

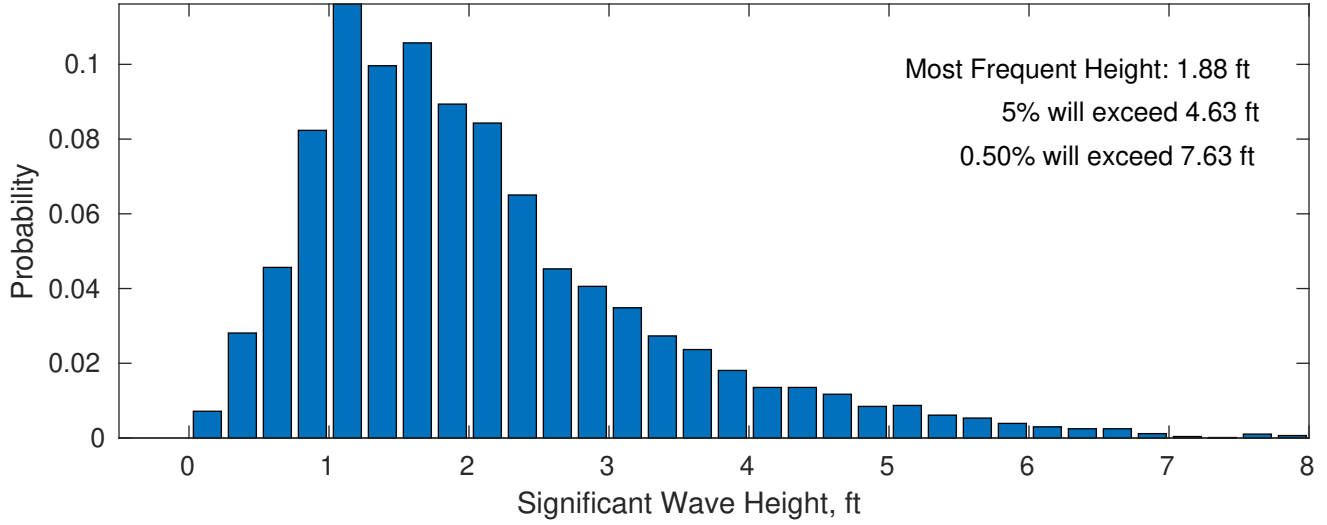
Severe storms with gale force winds and extreme waves are not expected during this month.

UK Cable Route GT - Landing August

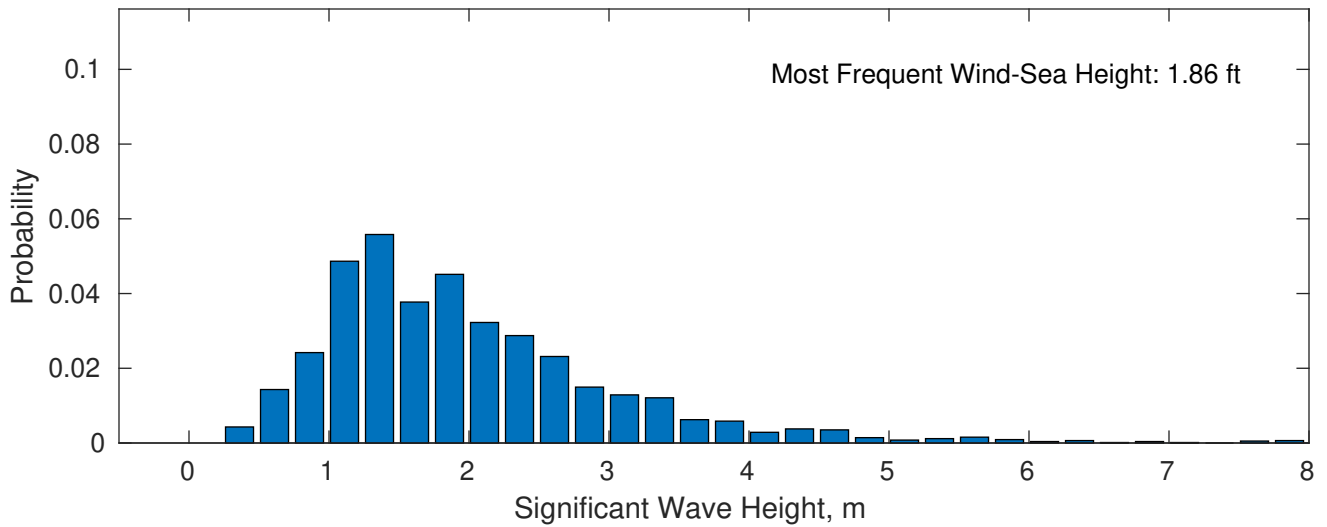




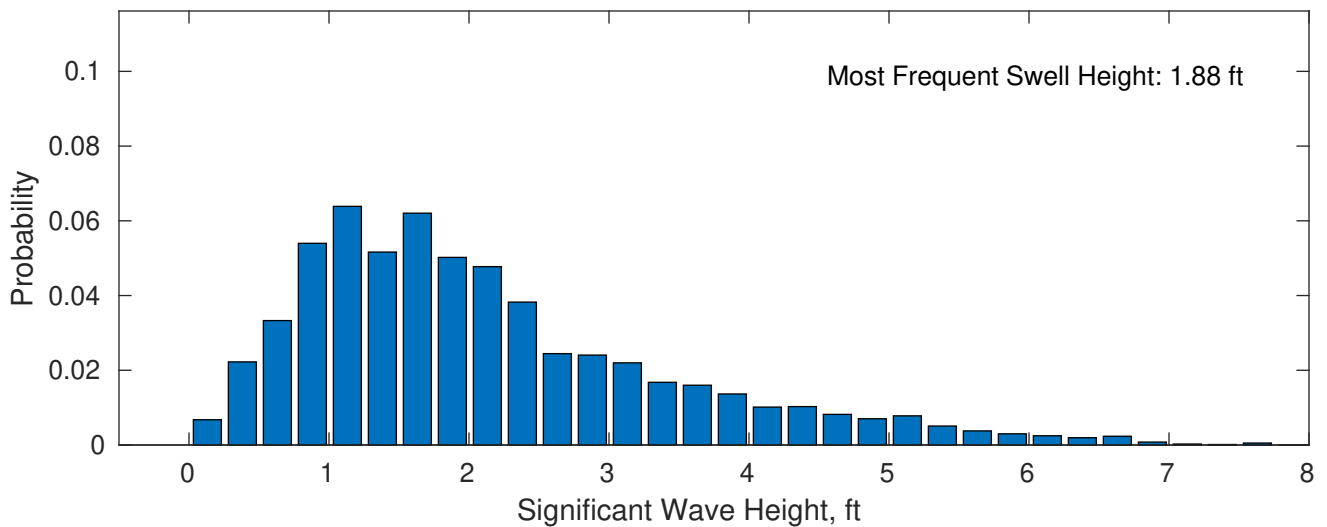
August Wave Height PDF: 1979 - 2015



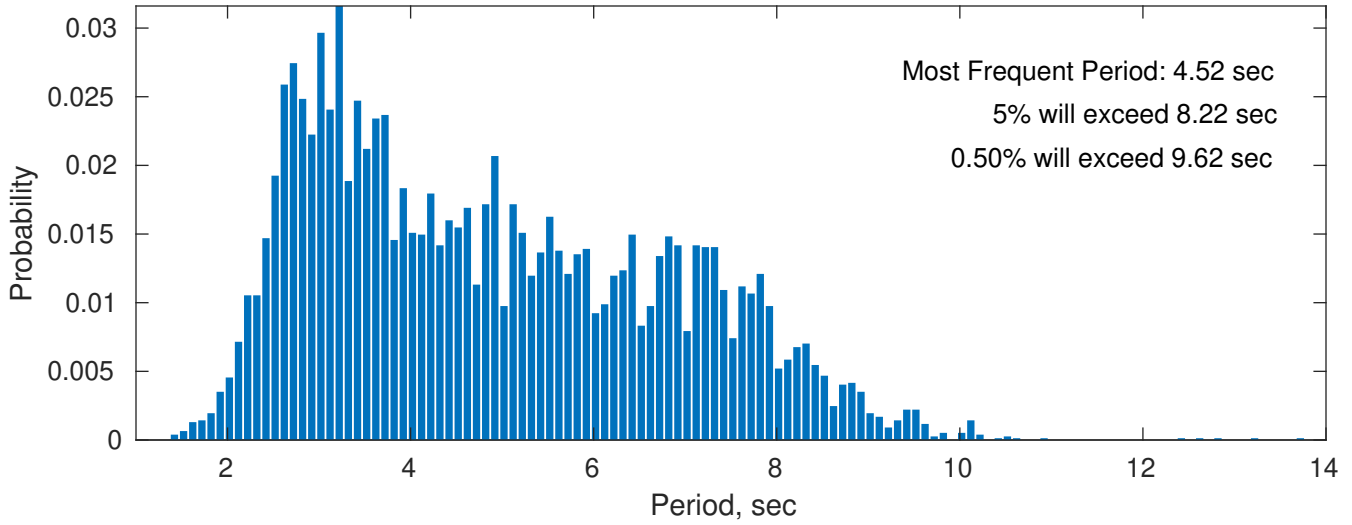
Wind-Sea: 38.63%



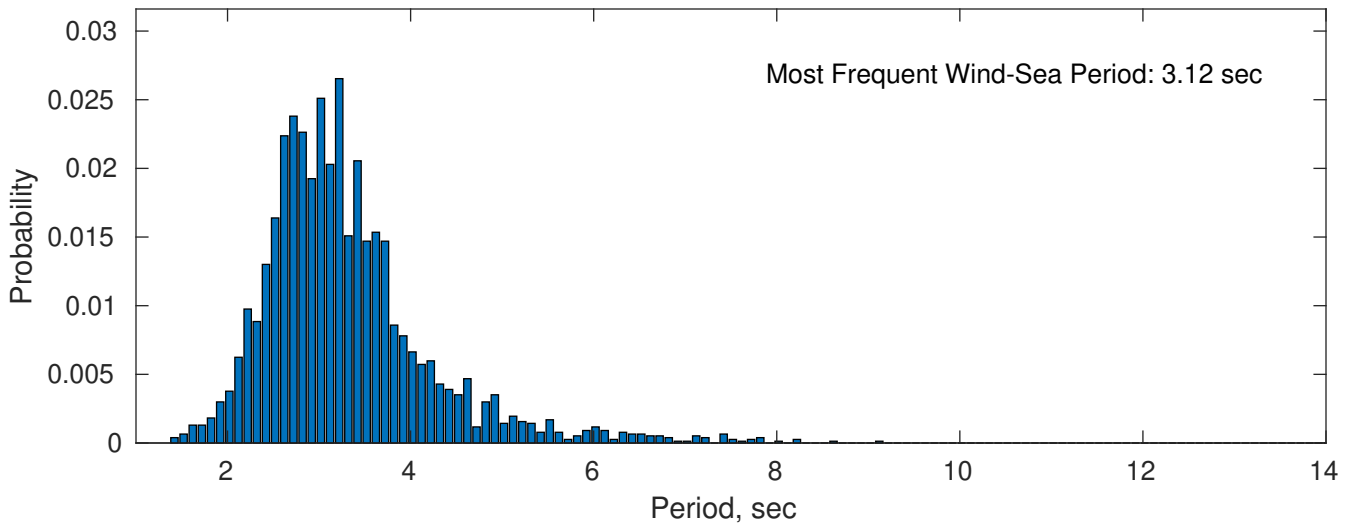
Swell: 61.37%



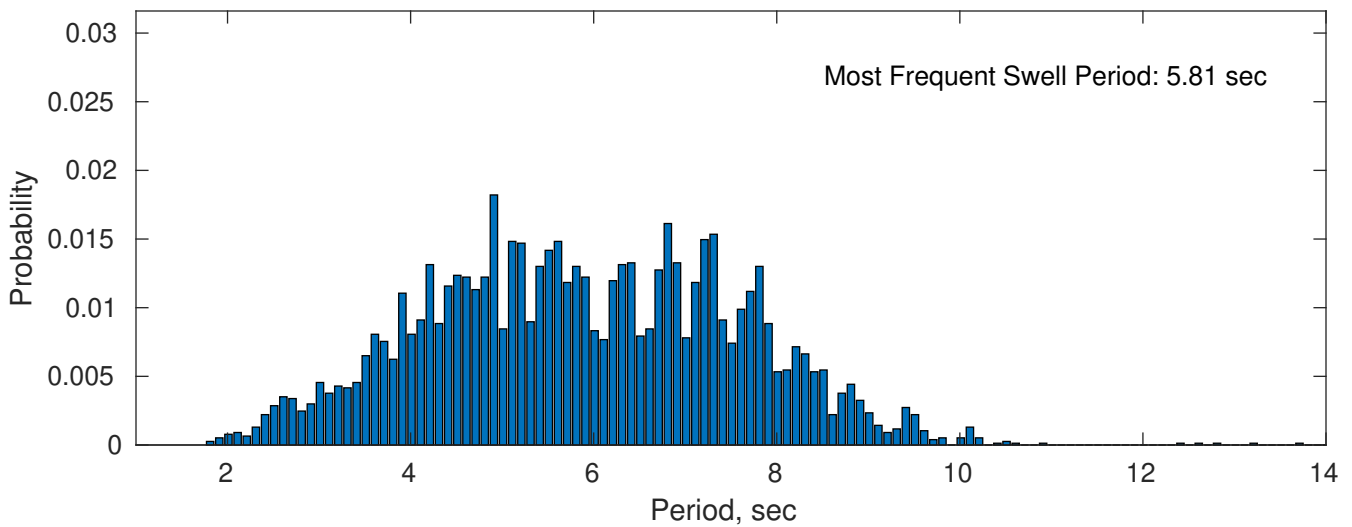
August Peak Wave Period PDF: 1979 - 2015



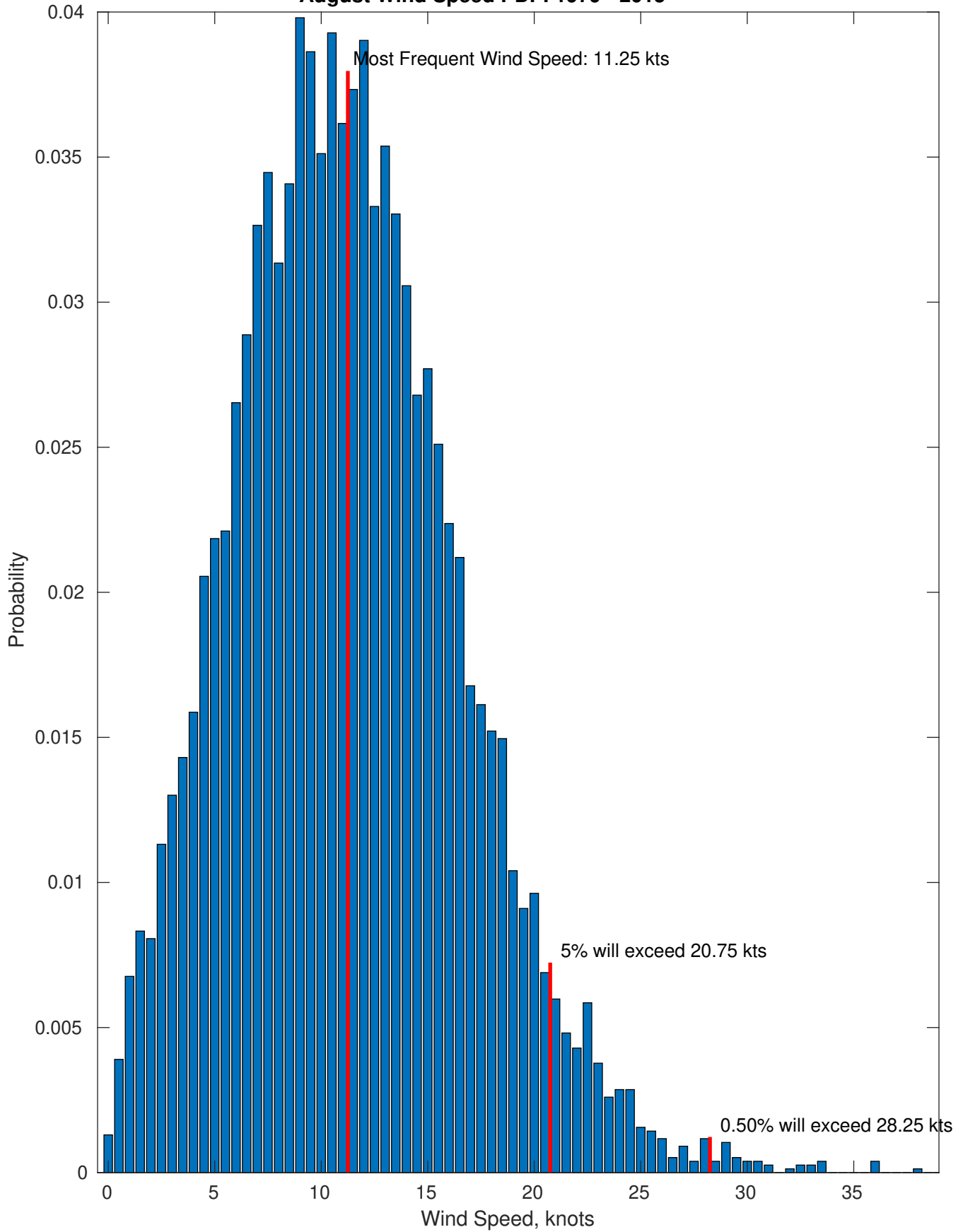
Wind-Sea: 38.63%



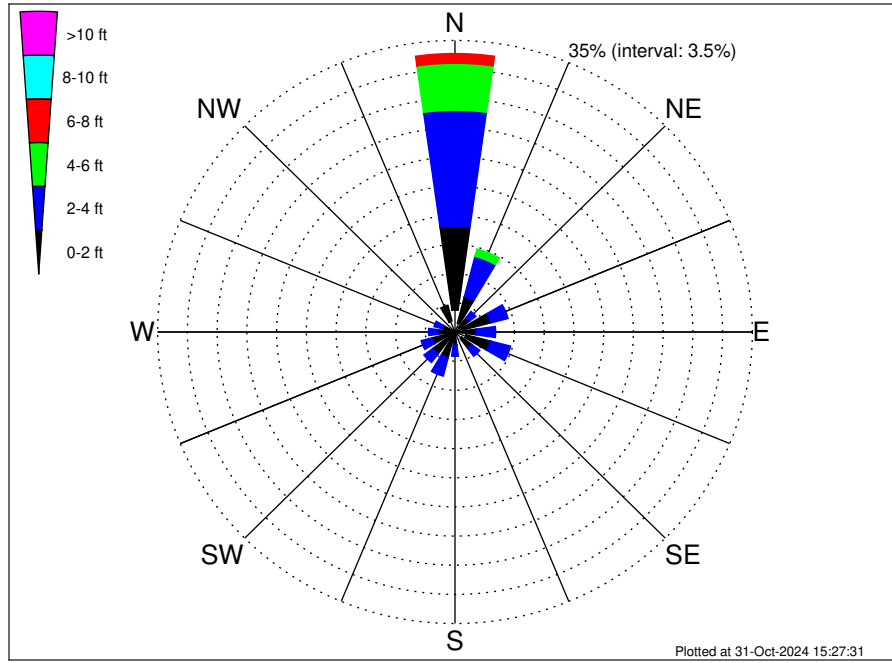
Swell: 61.37%



August Wind Speed PDF: 1979 - 2015



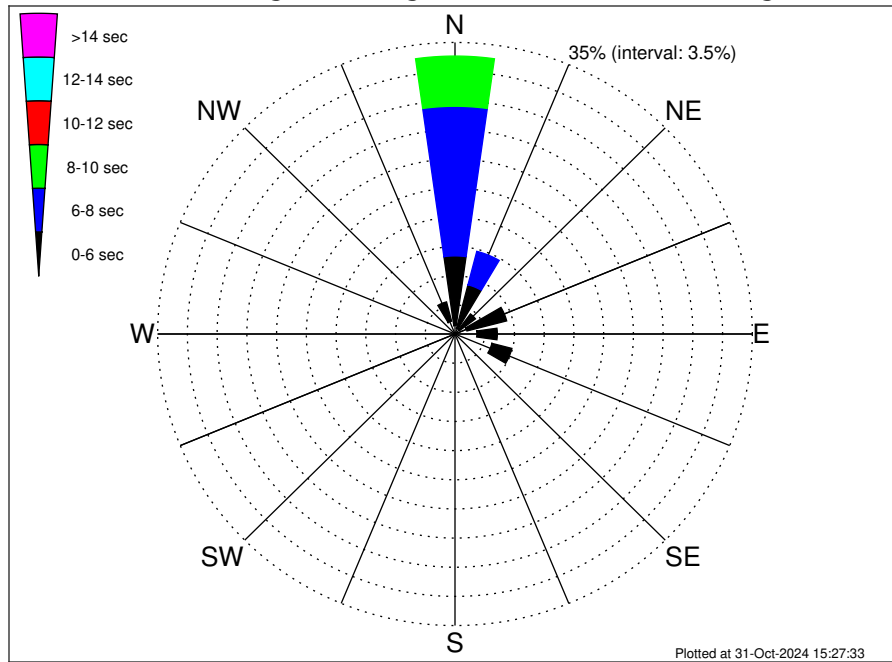
UK Cable Route GT - Landing Climatological WaveHeight Rose for August: 1979 - 2015



Joint Frequency Distribution Table

	N	NNE	NE	ENE	E	ESE	SE	SSE	S	SSW	SW	WSW	W	WNW	NW	NNW	Total
calm	2.63	1.11	0.65	0.95	0.64	1.33	0.98	0.17	0.16	0.38	0.59	0.52	0.16	0.16	0.29	1.37	12.04
1 - 2 ft	10.04	3.23	1.51	3.41	1.91	3.00	1.50	0.51	1.42	2.78	2.69	2.30	1.86	1.46	0.81	1.96	40.39
2 - 4 ft	13.96	5.05	0.94	2.09	2.24	2.43	1.18	0.49	1.35	2.32	1.31	1.30	1.11	0.95	0.49	0.68	37.89
4 - 6 ft	5.63	0.92	0.20	0.26	0.27	0.16	0.07	0.03	0.10	0.01	0.01	0.01	0.03	0.01	0.05	0.08	7.84
6 - 8 ft	1.17	0.13	•	0.05	•	0.01	•	•	•	•	•	•	•	•	•	•	1.37
8 - 10 ft	0.27	0.12	•	•	•	0.03	•	•	•	•	•	•	•	•	•	•	0.42
10 - 12 ft	0.05	•	•	•	•	•	•	•	•	•	•	•	•	•	•	•	0.05
12 - 14 ft	•	•	•	•	•	•	•	•	•	•	•	•	•	•	•	•	•
14 - 16 ft	•	•	•	•	•	•	•	•	•	•	•	•	•	•	•	•	•
16 - 18 ft	•	•	•	•	•	•	•	•	•	•	•	•	•	•	•	•	•
> 18 ft	•	•	•	•	•	•	•	•	•	•	•	•	•	•	•	•	•
Total	33.75	10.55	3.29	6.76	5.06	6.96	3.72	1.20	3.03	5.49	4.60	4.14	3.15	2.58	1.64	4.08	100.00

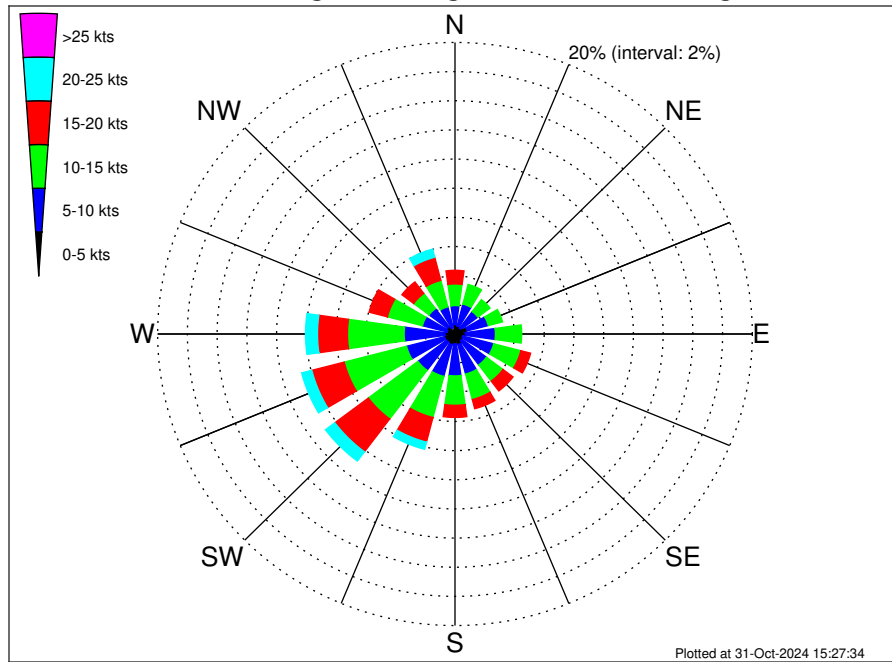
UK Cable Route GT - Landing Climatological WavePeriod Rose for August: 1979 - 2015



Joint Frequency Distribution Table

	N	NNE	NE	ENE	E	ESE	SE	SSE	S	SSW	SW	WSW	W	WNW	NW	NNW	Total
calm	•	•	•	•	•	•	•	•	•	•	•	•	•	•	•	•	•
1 - 2 sec	•	•	0.03	0.03	0.10	0.12	0.03	0.09	0.05	0.10	0.13	0.09	•	0.01	0.03	0.04	0.85
2 - 4 sec	1.01	0.70	0.66	1.43	2.47	4.37	2.86	1.00	2.69	5.25	4.46	4.02	3.11	2.48	1.51	1.55	39.59
4 - 6 sec	8.36	5.40	2.33	4.83	2.41	2.43	0.81	0.10	0.29	0.13	0.01	0.03	0.04	0.08	0.10	2.39	29.73
6 - 8 sec	17.96	4.15	0.27	0.48	0.08	0.04	0.03	•	•	•	•	•	•	•	•	0.10	23.11
8 - 10 sec	6.02	0.30	•	•	•	•	•	•	•	•	•	•	•	•	•	•	6.32
10 - 12 sec	0.30	•	•	•	•	•	•	•	•	•	•	•	•	•	•	•	0.30
12 - 14 sec	0.07	•	•	•	•	•	•	•	•	•	•	•	•	•	•	•	0.07
14 - 16 sec	•	•	•	•	•	•	•	•	•	•	•	•	•	•	•	•	•
18 - 20 sec	0.03	•	•	•	•	•	•	•	•	•	•	•	•	•	•	•	0.03
22 - 24 sec	•	•	•	•	•	•	•	•	•	•	•	•	•	•	•	•	•
Total	33.75	10.55	3.29	6.76	5.06	6.96	3.72	1.20	3.03	5.49	4.60	4.14	3.15	2.58	1.64	4.08	100.00

UK Cable Route GT - Landing Climatological Wind Rose for August: 1979 - 2015



Joint Frequency Distribution Table

	N	NNE	NE	ENE	E	ESE	SE	SSE	S	SSW	SW	WSW	W	WNW	NW	NNW	Total
calm	0.01	0.05	•	0.04	0.04	0.01	0.01	0.05	0.03	0.04	0.05	0.01	0.04	0.04	0.05	0.04	0.52
0 - 5 kts	0.64	0.52	0.52	0.81	0.66	0.52	0.59	0.70	0.65	0.72	0.65	0.72	0.64	0.51	0.59	0.40	9.82
5 - 10 kts	1.30	1.55	1.40	1.47	2.02	2.16	2.06	2.08	2.20	2.25	2.42	2.64	2.74	1.72	1.55	1.48	31.04
10 - 15 kts	1.48	1.39	1.03	0.99	1.77	1.89	1.39	1.81	2.02	2.91	4.18	4.33	3.81	2.43	1.30	1.87	34.60
15 - 20 kts	0.94	0.38	0.31	0.16	0.38	0.68	0.85	0.65	0.83	1.74	2.82	2.25	2.02	1.27	0.99	1.64	17.90
20 - 25 kts	0.34	0.07	0.04	0.03	•	0.03	0.05	0.14	0.20	0.51	0.79	0.70	0.81	0.42	0.27	0.57	4.96
25 - 30 kts	0.14	0.03	•	•	•	•	•	0.04	0.07	0.12	0.05	0.07	0.05	0.08	0.05	0.22	0.91
30 - 35 kts	•	•	•	•	•	0.01	•	0.01	•	•	0.01	•	•	0.05	0.01	0.10	0.21
35 - 40 kts	•	•	•	•	0.01	0.01	•	•	•	•	•	•	•	•	•	0.03	0.05
40 - 45 kts	•	•	•	•	•	•	•	•	•	•	•	•	•	•	•	•	•
45 - 50 kts	•	•	•	•	•	•	•	•	•	•	•	•	•	•	•	•	•
Total	4.85	3.98	3.30	3.49	4.88	5.31	4.94	5.49	5.98	8.29	10.98	10.72	10.11	6.52	4.81	6.36	100.00