

# UK Cable Route GT - Landing - June

Latitude: 53.31 N Longitude: 0.35 E

## Weather Days

Wave Height > 6.0 ft Mean: 0.6 days Range: 0.0 - 1.5 days p50:30 days p75:1 days p90:1 days  
Wave Height > 7.0 ft Mean: 0.3 days Range: 0.0 - 0.8 days p50:30 days p75:1.5 days p90:0.5 days  
Wave Height > 8.0 ft Mean: 0.1 days Range: 0.0 - 0.3 days p50:30 days p75:30 days p90:1 days  
Wind Speed > 15.0 knots Mean: 6.6 days Range: 4.1 - 9.1 days p50:6 days p75:5 days p90:5 days  
Wind Speed > 20.0 knots Mean: 1.4 days Range: 0.5 - 2.4 days p50:1.5 days p75:1 days p90:0.5 days  
Wind Speed > 25.0 knots Mean: 0.2 days Range: 0.0 - 0.5 days p50:0.5 days p75:0.5 days p90:0.5 days

## Working Window

Wave Height < 6.0 ft	A 1 day or longer window will statistically occur 1.5 times per month A 2 day or longer window will statistically occur 1.4 times per month A 3 day or longer window will statistically occur 1.3 times per month
Wave Height < 7.0 ft	A 1 day or longer window will statistically occur 1.3 times per month A 2 day or longer window will statistically occur 1.3 times per month A 3 day or longer window will statistically occur 1.3 times per month
Wave Height < 8.0 ft	A 1 day or longer window will statistically occur 1.0 times per month A 2 day or longer window will statistically occur 1.0 times per month A 3 day or longer window will statistically occur 1.0 times per month

## Waves

Mean Height: 2 - 4 ft  
The wave heights will occasionally reach 6 - 8 ft, but rarely higher.  
Mean Period: 4 - 6 sec  
The wave periods will occasionally reach 8 - 10 sec, but rarely longer.  
Principle Direction, from: N  
WindSea/Swell: 34% / 66%

## Winds

Mean Speed: 10 - 15 kts  
The winds will occasionally reach 25 - 30 kts, but rarely greater.  
Principle Direction, from: WSW

## Currents

Mean Speed: 0.01-0.25 kts  
The currents will occasionally reach 1.00-1.25 kts, but rarely greater.  
Principle Direction, to: NNE

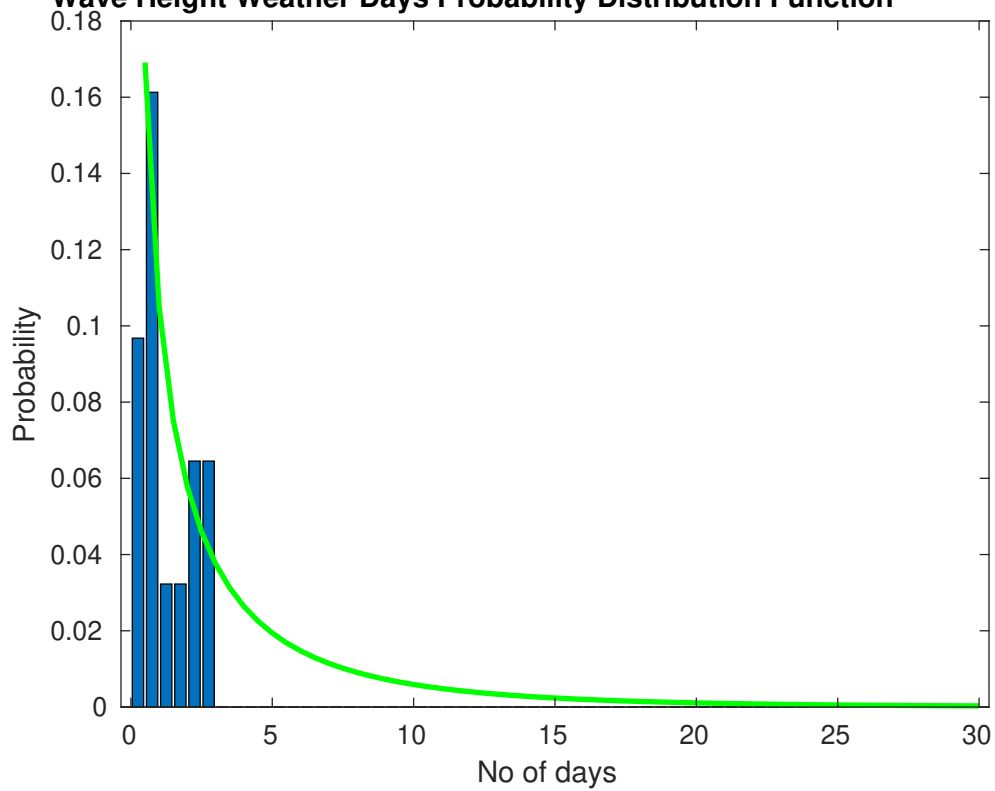
### Weather Days

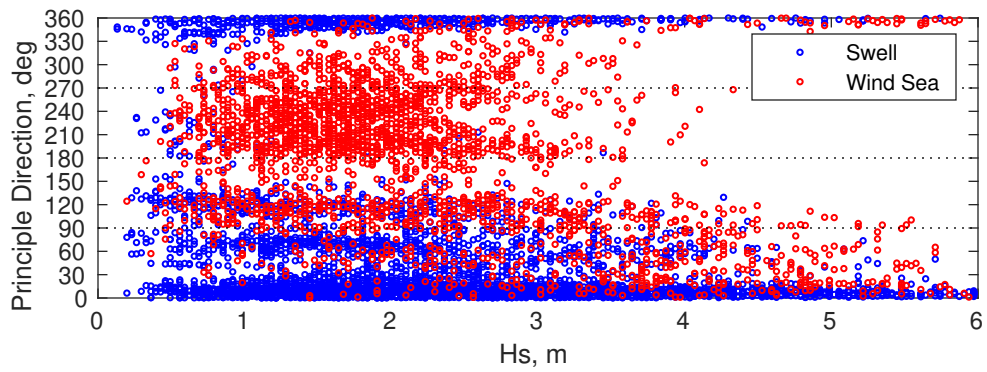
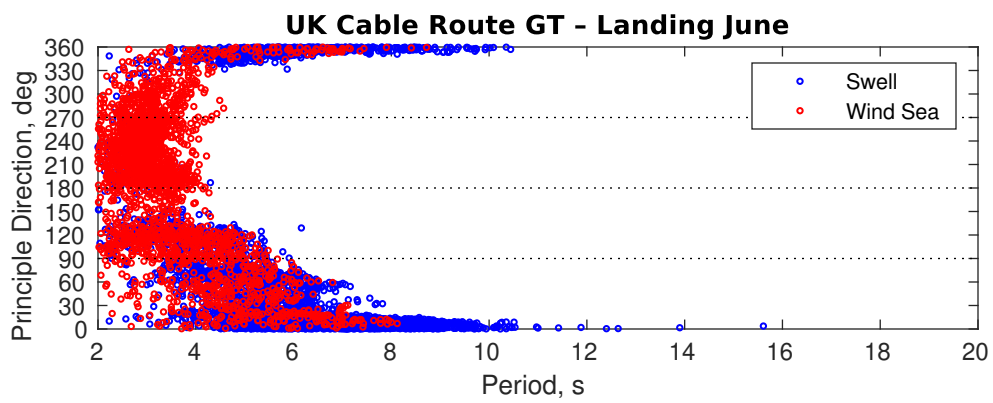
Current Speed > 1.0 knots Mean: 0.1 days Range: 0.0 - 0.5 days p50:1 days p75:1 days p90:1 days  
Current Speed > 1.5 knots Mean: 0.0 days Range: 0.0 - 0.0 days p50:1 days p75:1 days p90:1 days  
Current Speed > 2.0 knots Mean: 0.0 days Range: 0.0 - 0.0 days p50:1 days p75:1 days p90:1 days

## Severe Storms

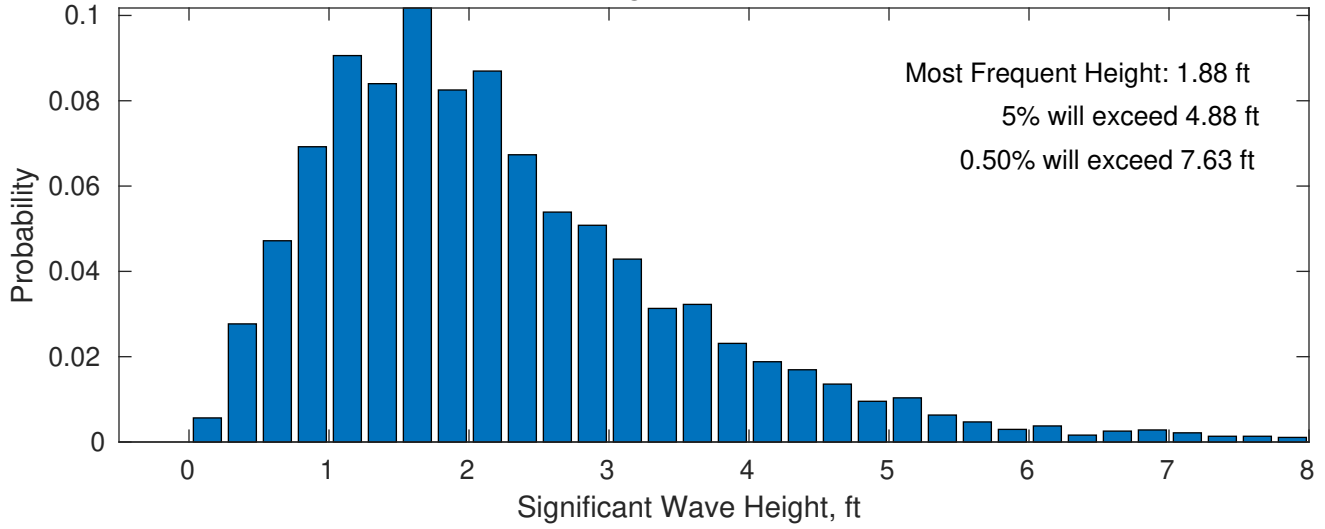
Severe storms with gale force winds and extreme waves are not expected during this month.

**Wave Height Weather Days Probability Distribution Function**

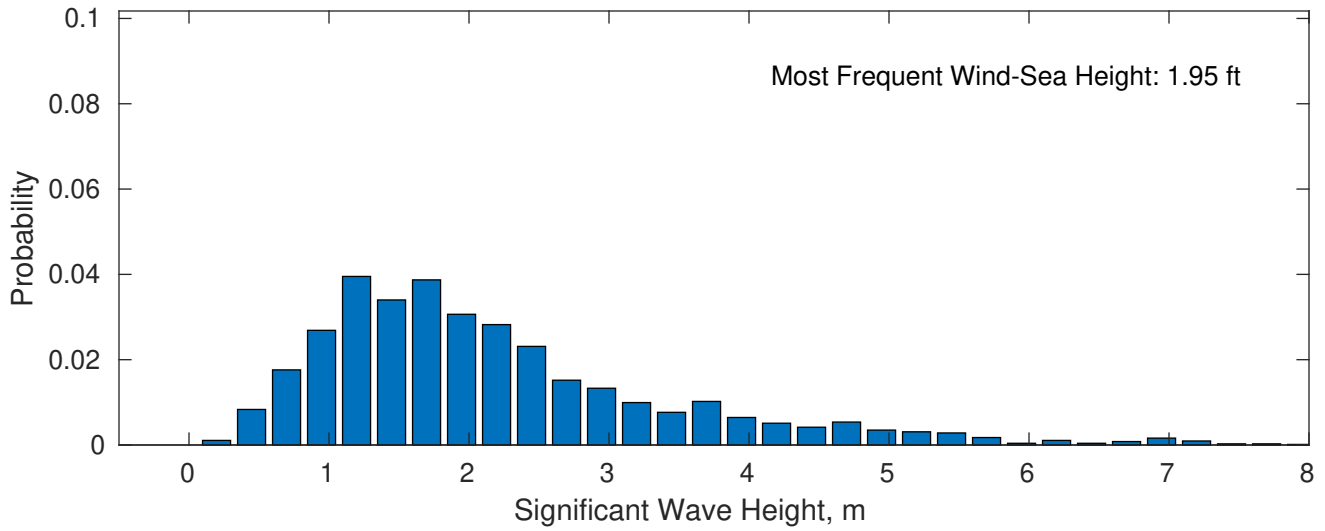




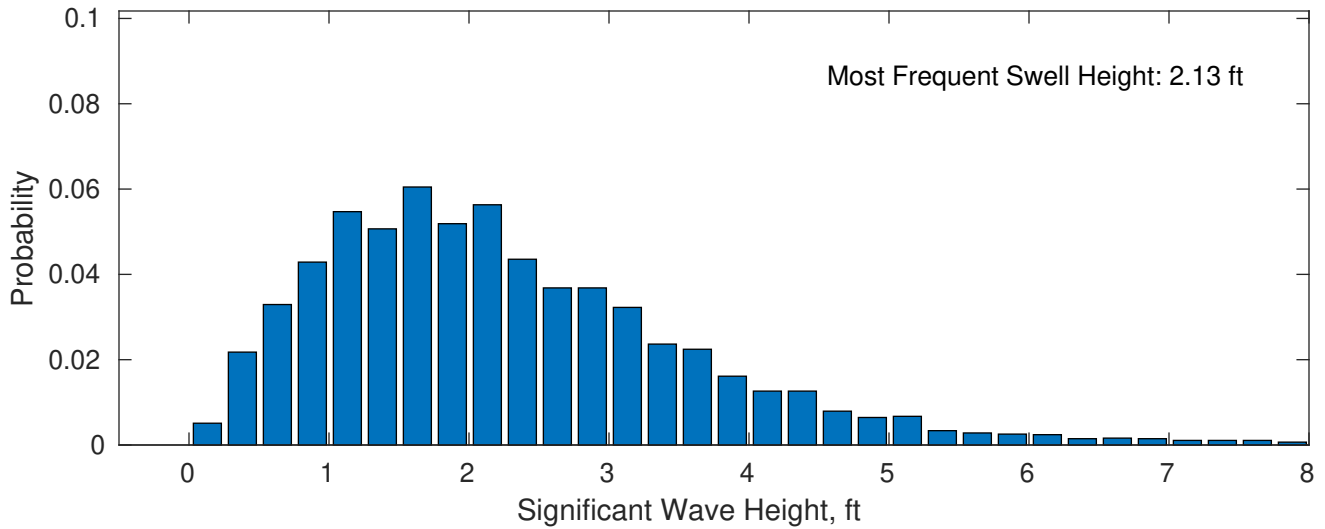
**June Wave Height PDF: 1979 - 2015**



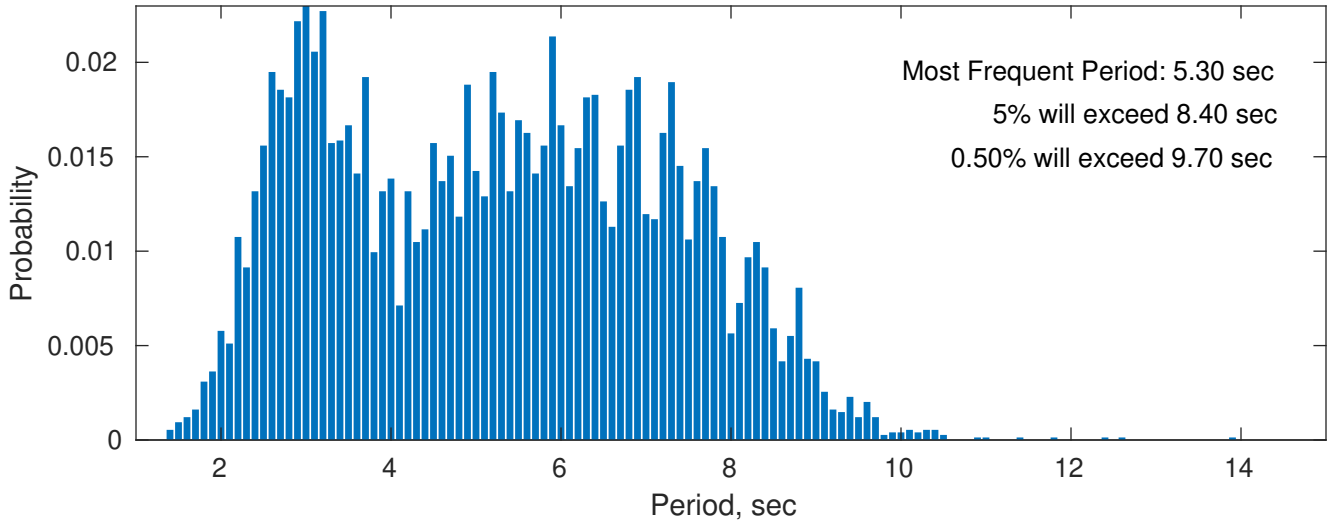
**Wind-Sea: 34.46%**



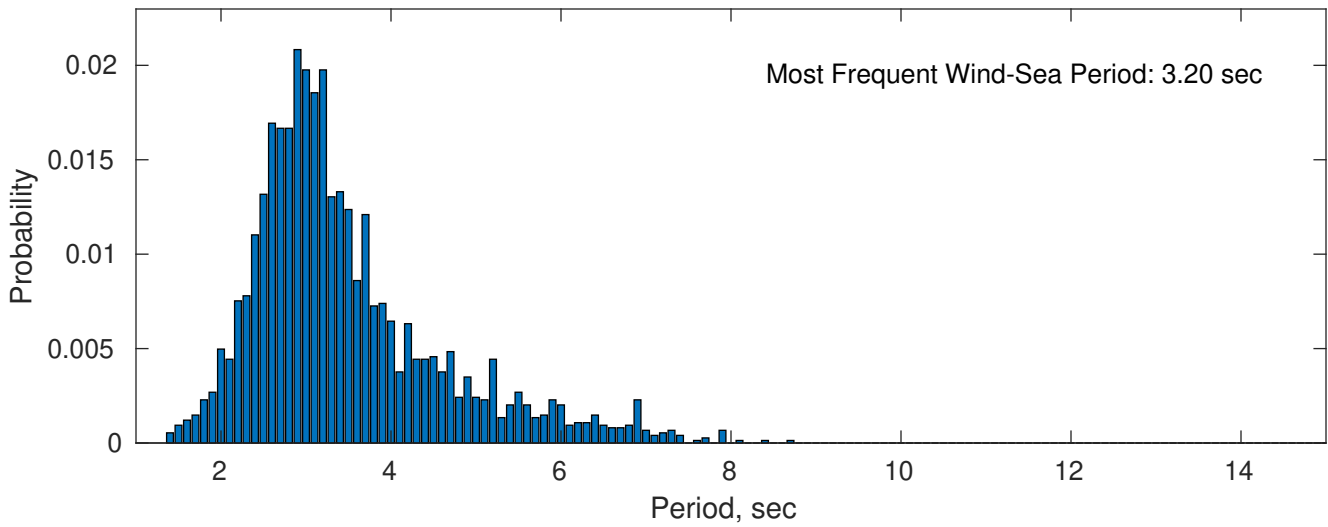
**Swell: 65.54%**



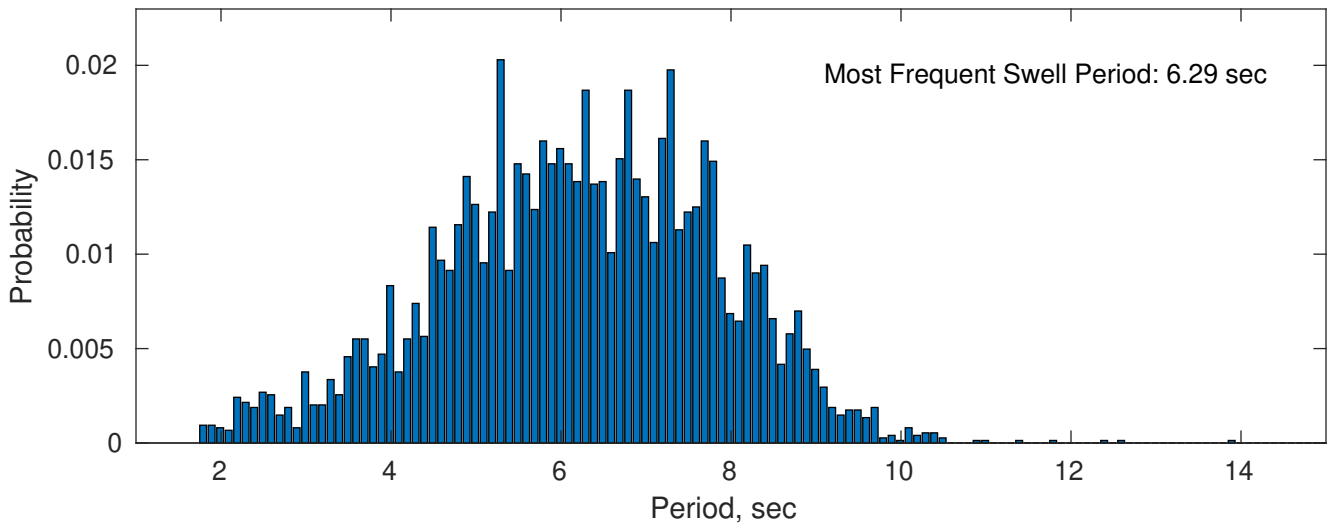
**June Peak Wave Period PDF: 1979 - 2015**



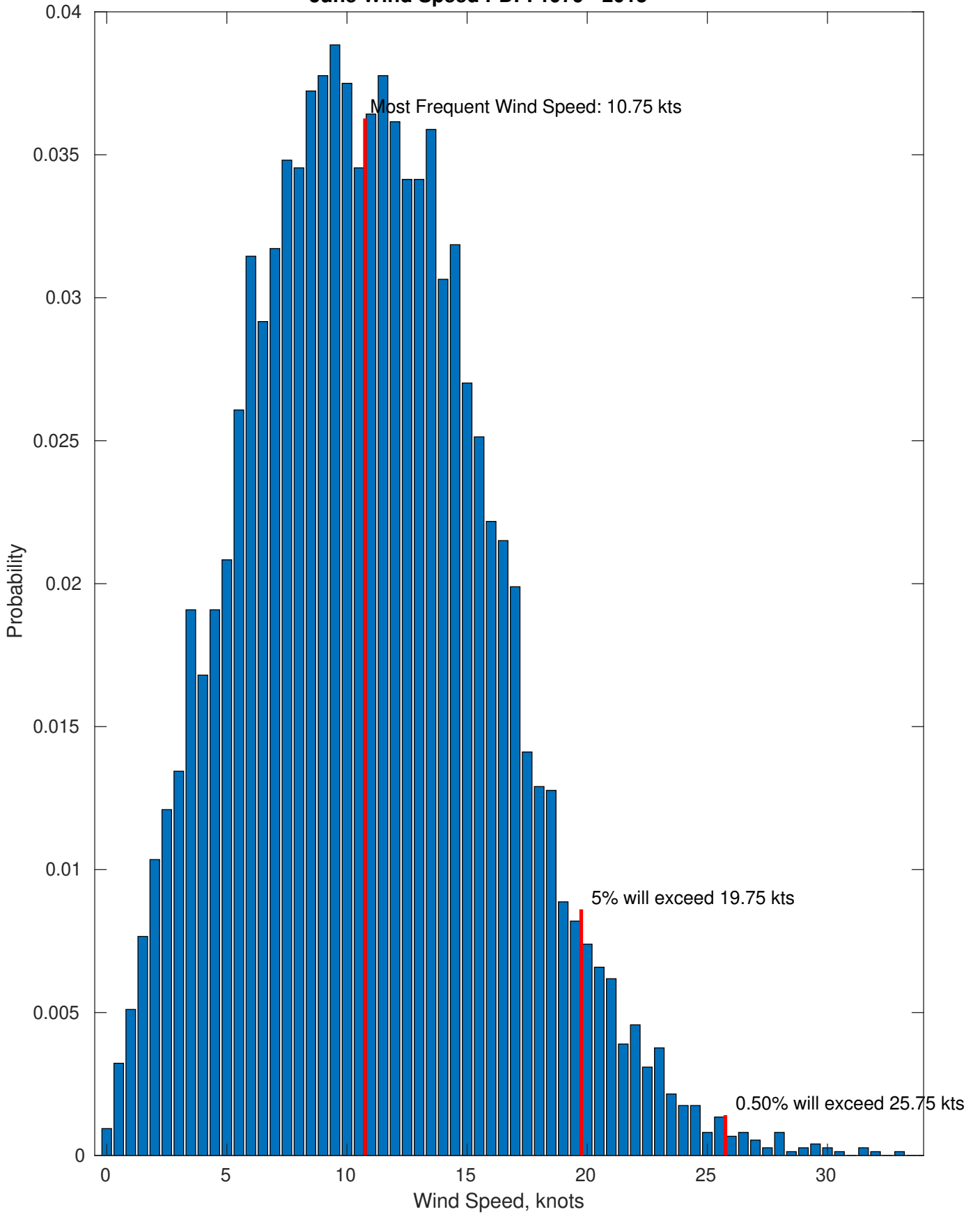
**Wind-Sea: 34.46%**



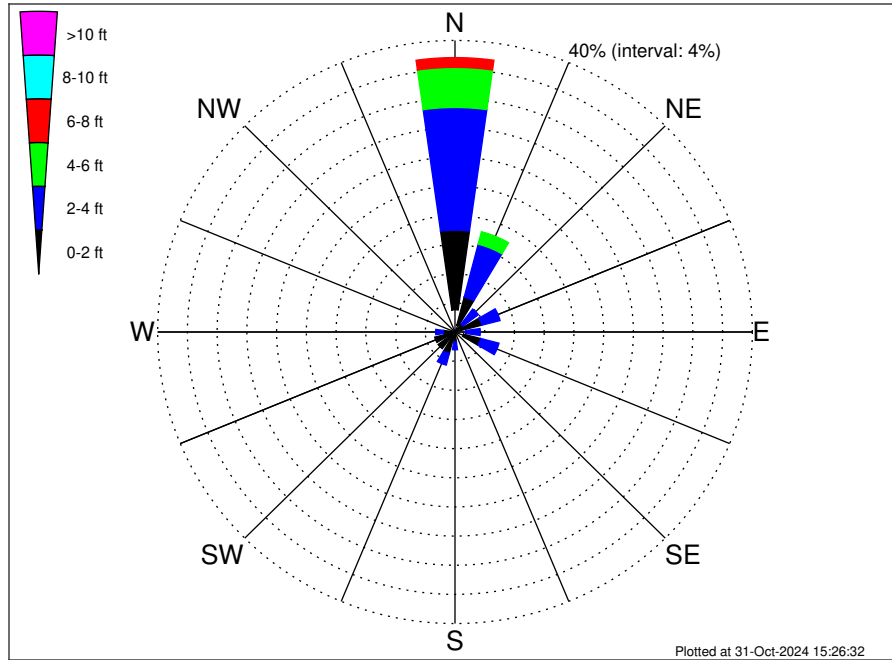
**Swell: 65.54%**



June Wind Speed PDF: 1979 - 2015



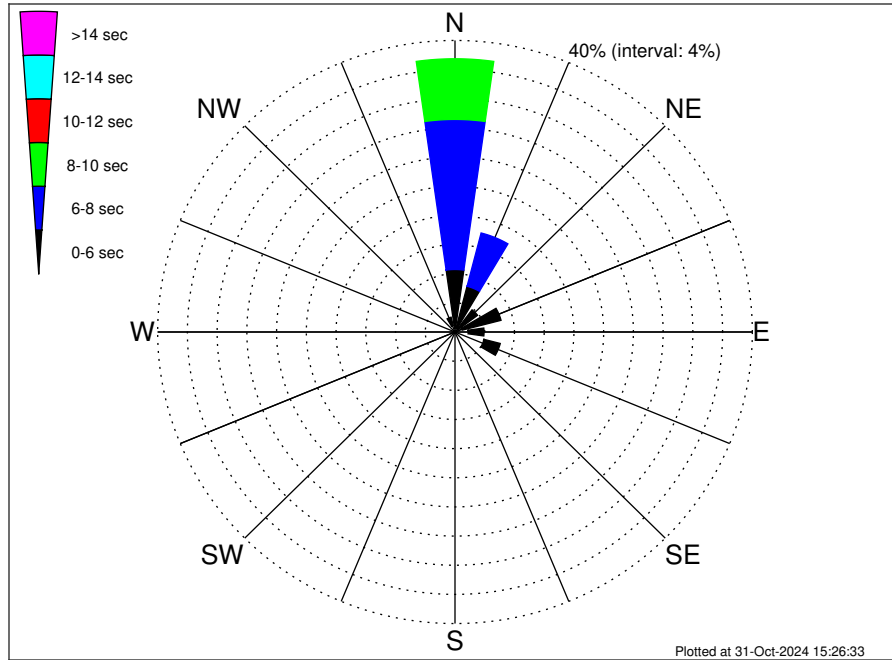
**UK Cable Route GT - Landing Climatological WaveHeight Rose for June: 1979 - 2015**



**Joint Frequency Distribution Table**

	N	NNE	NE	ENE	E	ESE	SE	SSE	S	SSW	SW	WSW	W	WNW	NW	NNW	Total
calm	3.05	0.99	0.34	0.83	0.51	1.18	0.86	0.22	0.31	0.59	0.63	0.38	0.38	0.23	0.13	0.60	11.24
1 - 2 ft	10.93	3.95	1.03	2.90	0.94	2.41	0.90	0.32	1.06	2.46	2.22	2.45	1.18	0.91	0.46	0.89	35.01
2 - 4 ft	16.83	7.50	2.57	2.53	1.95	2.53	0.86	0.46	1.08	1.64	0.71	0.98	1.05	0.63	0.46	0.60	42.37
4 - 6 ft	5.50	1.76	0.62	0.62	0.48	0.17	0.01	•	0.01	•	0.01	0.01	0.05	0.03	•	0.03	9.31
6 - 8 ft	1.34	0.12	0.05	0.19	0.03	•	•	•	•	•	•	•	•	•	•	•	1.73
8 - 10 ft	0.22	0.12	•	•	•	•	•	•	•	•	•	•	•	•	•	•	0.34
10 - 12 ft	•	•	•	•	•	•	•	•	•	•	•	•	•	•	•	•	•
12 - 14 ft	•	•	•	•	•	•	•	•	•	•	•	•	•	•	•	•	•
14 - 16 ft	•	•	•	•	•	•	•	•	•	•	•	•	•	•	•	•	•
16 - 18 ft	•	•	•	•	•	•	•	•	•	•	•	•	•	•	•	•	•
> 18 ft	•	•	•	•	•	•	•	•	•	•	•	•	•	•	•	•	•
Total	37.86	14.45	4.61	7.07	3.91	6.29	2.63	0.99	2.46	4.69	3.58	3.82	2.66	1.80	1.05	2.12	100.00

**UK Cable Route GT - Landing Climatological WavePeriod Rose for June: 1979 - 2015**

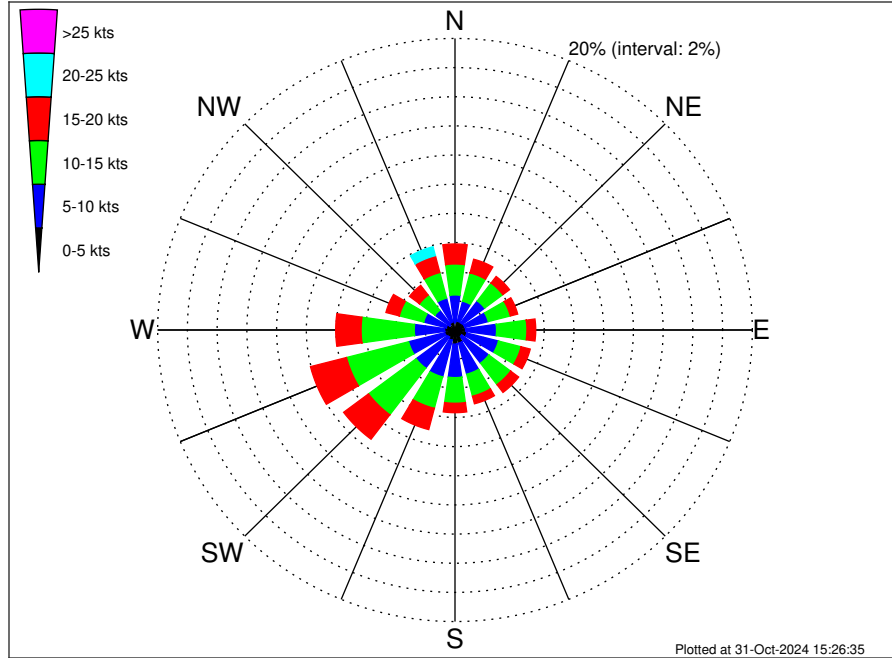


**Joint Frequency Distribution Table**

	N	NNE	NE	ENE	E	ESE	SE	SSE	S	SSW	SW	WSW	W	WNW	NW	NNW	Total
calm	•	•	•	•	•	•	•	•	•	•	•	•	•	•	•	•	•
1 - 2 sec	•	0.03	0.03	0.03	0.13	0.08	0.15	0.07	0.04	0.08	0.13	0.12	0.11	0.03	0.03	0.09	1.14
2 - 4 sec	0.56	0.54	0.52	0.97	1.64	3.95	1.96	0.90	2.34	4.57	3.43	3.68	2.46	1.73	0.97	0.81	31.03
4 - 6 sec	8.01	5.91	3.25	5.40	2.14	2.26	0.51	0.03	0.08	0.04	0.01	0.01	0.09	0.04	0.05	1.20	29.05
6 - 8 sec	20.59	7.55	0.81	0.67	•	•	0.01	•	•	•	•	•	•	•	•	0.03	29.66
8 - 10 sec	8.32	0.42	•	•	•	•	•	•	•	•	•	•	•	•	•	•	8.74
10 - 12 sec	0.32	•	•	•	•	•	•	•	•	•	•	•	•	•	•	•	0.32
12 - 14 sec	0.04	•	•	•	•	•	•	•	•	•	•	•	•	•	•	•	0.04
14 - 16 sec	0.01	•	•	•	•	•	•	•	•	•	•	•	•	•	•	•	0.01
18 - 20 sec	•	•	•	•	•	•	•	•	•	•	•	•	•	•	•	•	•
22 - 24 sec	•	•	•	•	•	•	•	•	•	•	•	•	•	•	•	•	•
Total	37.86	14.45	4.61	7.07	3.91	6.29	2.63	0.99	2.46	4.69	3.58	3.82	2.66	1.80	1.05	2.12	100.00



### UK Cable Route GT - Landing Climatological Wind Rose for June: 1979 - 2015



### Joint Frequency Distribution Table

	N	NNE	NE	ENE	E	ESE	SE	SSE	S	SSW	SW	WSW	W	WNW	NW	NNW	Total
calm	0.03	0.01	0.01	0.01	•	0.03	0.01	0.01	0.04	0.01	0.01	0.08	0.05	0.07	0.03	•	0.42
0 - 5 kts	0.47	0.60	0.62	0.66	0.71	0.79	0.55	0.91	0.93	0.71	0.60	0.63	0.65	0.54	0.42	0.56	10.36
5 - 10 kts	1.91	1.42	1.87	1.64	2.08	2.20	2.28	2.20	2.30	2.59	2.66	2.51	2.04	1.57	1.25	1.69	32.24
10 - 15 kts	2.12	2.00	1.53	1.53	2.04	1.57	1.84	1.56	1.76	2.23	4.01	4.31	3.58	1.69	1.30	1.81	34.91
15 - 20 kts	1.37	0.97	0.56	0.51	0.59	0.63	0.67	0.54	0.65	1.51	2.10	2.50	1.71	0.93	0.83	1.20	17.26
20 - 25 kts	0.38	0.12	0.08	0.17	0.09	0.05	0.09	0.03	0.11	0.48	0.36	0.39	0.44	0.28	0.39	0.63	4.11
25 - 30 kts	0.09	0.05	0.03	0.01	0.05	0.01	•	0.01	•	0.01	0.03	0.07	0.09	0.01	0.05	0.07	0.60
30 - 35 kts	•	0.04	•	•	•	•	•	•	•	•	•	•	0.01	•	0.01	0.03	0.09
35 - 40 kts	•	•	•	•	•	•	•	•	•	•	•	•	•	•	•	•	•
40 - 45 kts	•	•	•	•	•	•	•	•	•	•	•	•	•	•	•	•	•
45 - 50 kts	•	•	•	•	•	•	•	•	•	•	•	•	•	•	•	•	•
Total	6.37	5.23	4.70	4.54	5.58	5.30	5.46	5.27	5.78	7.55	9.77	10.50	8.58	5.09	4.29	5.99	100.00