

UK Cable Route GT - Landing - March

Latitude: 53.31 N Longitude: 0.35 E

Weather Days

Wave Height > 6.0 ft Mean: 2.5 days Range: 0.5 - 4.4 days p50:2.5 days p75:1 days p90:1 days

Wave Height > 7.0 ft Mean: 1.2 days Range: 0.1 - 2.3 days p50:2 days p75:1 days p90:1 days

Wave Height > 8.0 ft Mean: 0.7 days Range: 0.0 - 1.4 days p50:2 days p75:1 days p90:0.5 days

Wind Speed > 15.0 knots Mean: 15.3 days Range: 11.3 - 19.3 days p50:15.5 days p75:13 days p90:10 days

Wind Speed > 20.0 knots Mean: 7.5 days Range: 4.4 - 10.5 days p50:7 days p75:5.5 days p90:4 days

Wind Speed > 25.0 knots Mean: 2.5 days Range: 0.9 - 4.1 days p50:2.5 days p75:1.5 days p90:1 days

Working Window

Wave Height < 6.0 ft
A 1 day or longer window will statistically occur 3.1 times per month
A 2 day or longer window will statistically occur 2.5 times per month
A 3 day or longer window will statistically occur 2.1 times per month

Wave Height < 7.0 ft
A 1 day or longer window will statistically occur 2.2 times per month
A 2 day or longer window will statistically occur 1.8 times per month
A 3 day or longer window will statistically occur 1.5 times per month

Wave Height < 8.0 ft
A 1 day or longer window will statistically occur 1.7 times per month
A 2 day or longer window will statistically occur 1.6 times per month
A 3 day or longer window will statistically occur 1.3 times per month

Waves

Mean Height: 2 - 4 ft

The wave heights will occasionally reach 10 - 12 ft, but rarely higher.

Mean Period: 4 - 6 sec

The wave periods will occasionally reach 12 - 14 sec, but rarely longer.

Principle Direction, from: N

WindSea/Swell: 46% / 54%

Winds

Mean Speed: 15 - 20 kts

The winds will occasionally reach 30 - 35 kts, but rarely greater.

Principle Direction, from: WSW

Currents

Mean Speed: 0.25-0.50 kts

The currents will occasionally reach 1.25-1.50 kts, but rarely greater.

Principle Direction, to: N

Weather Days

Current Speed > 1.0 knots Mean: 0.2 days Range: 0.0 - 0.6 days p50:1 days p75:1 days p90:1 days

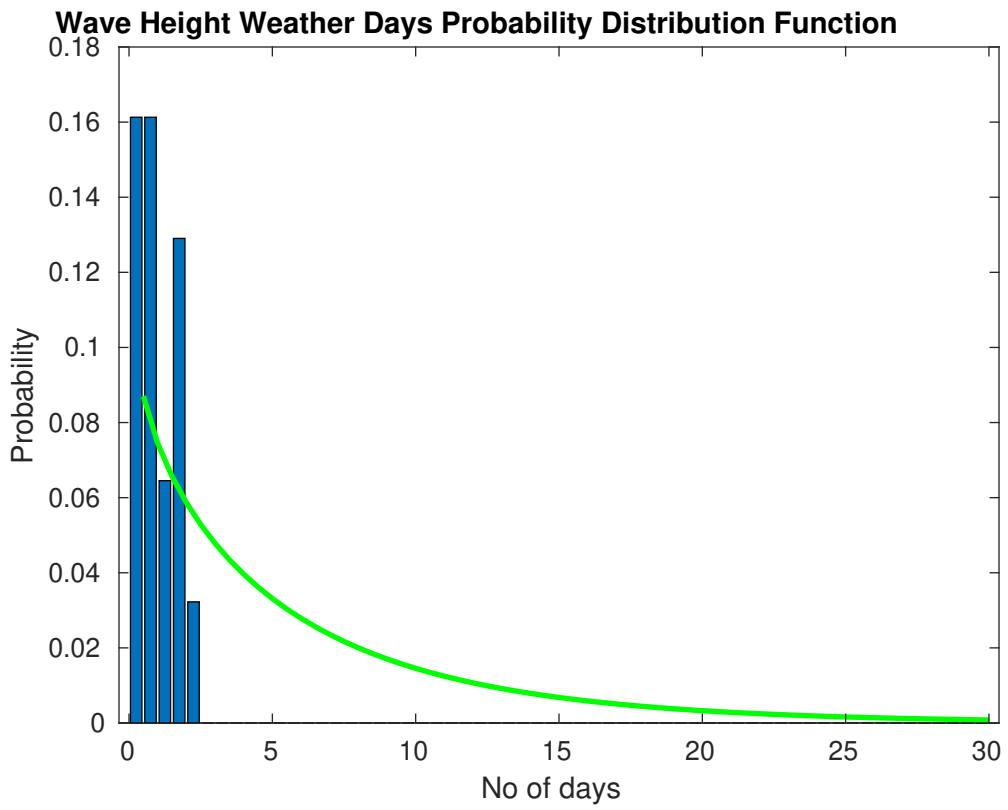
Current Speed > 1.5 knots Mean: 0.0 days Range: 0.0 - 0.0 days p50:1 days p75:1 days p90:1 days

Current Speed > 2.0 knots Mean: 0.0 days Range: 0.0 - 0.0 days p50:1 days p75:1 days p90:1 days

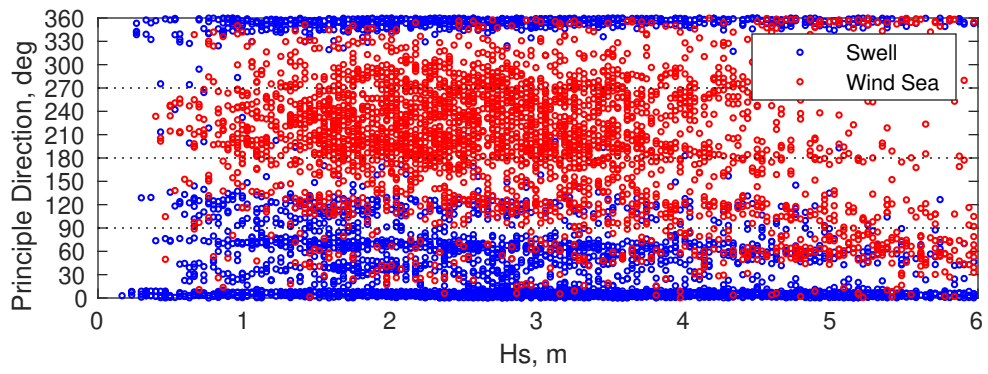
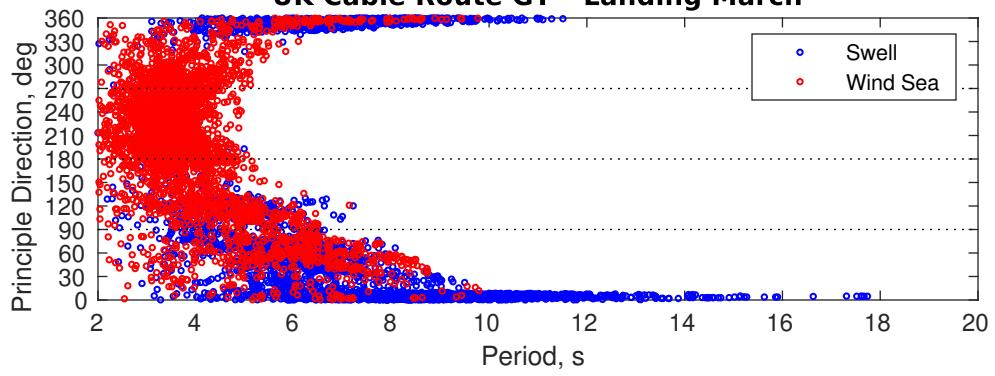
Severe Storms

There is a 6 % chance of a storm occurring in the month with winds peaking above 34 kts.

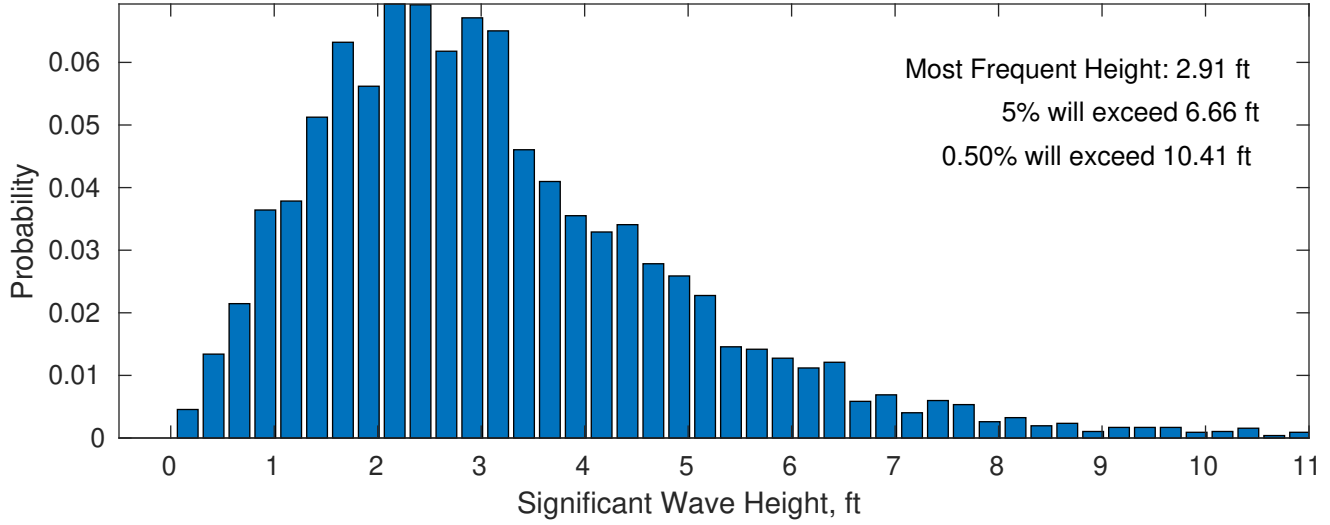
There is little chance of a storm occurring in the month with waves peaking at 4m (13 ft) or greater.



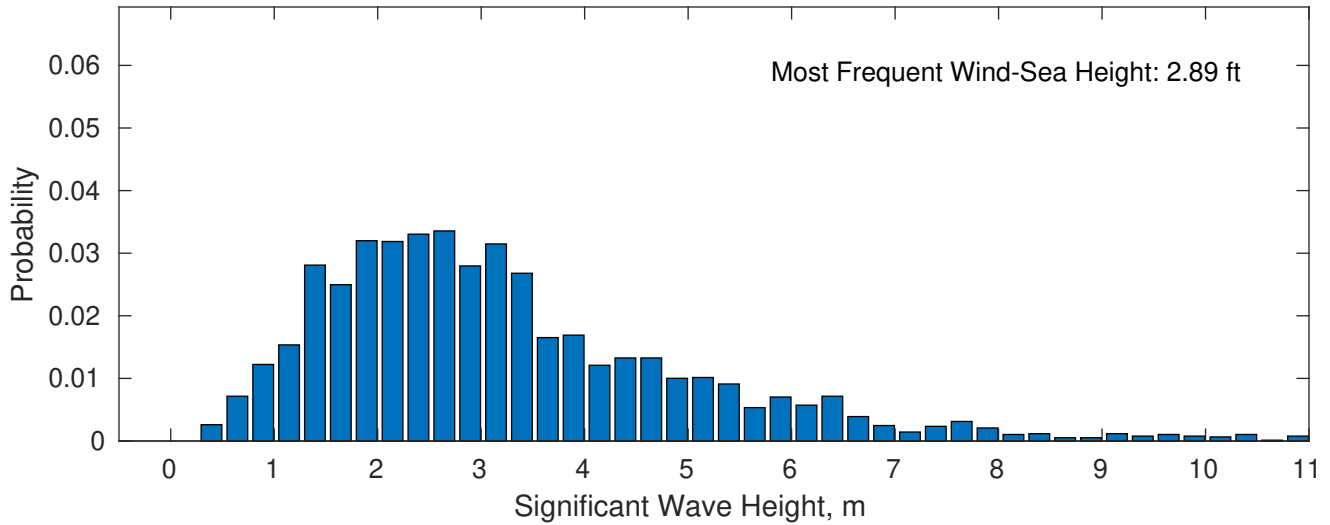
UK Cable Route GT - Landing March



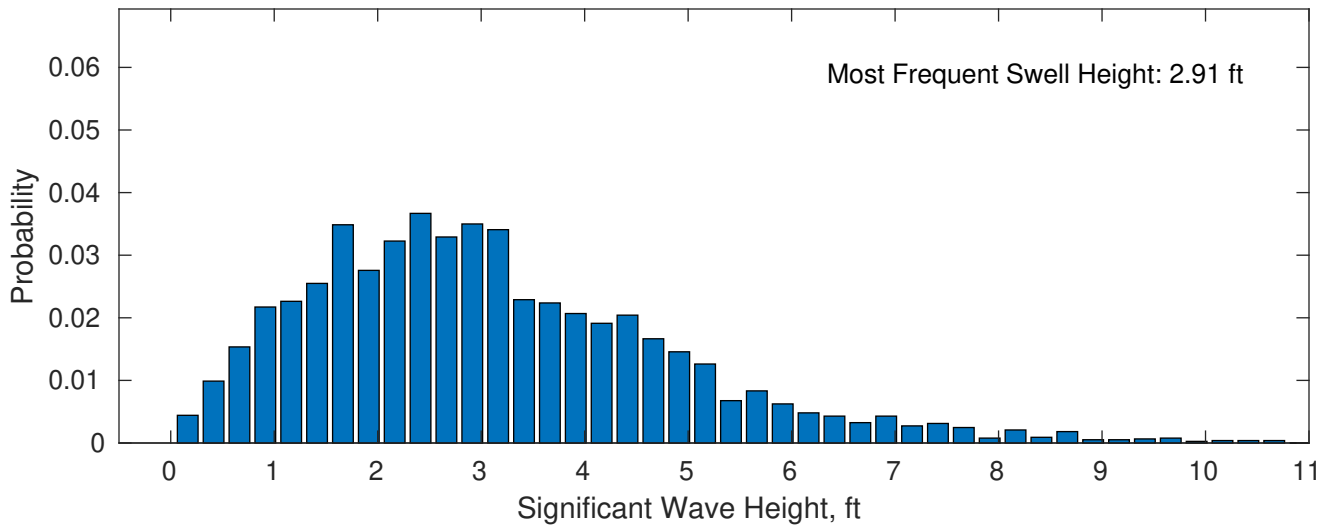
March Wave Height PDF: 1979 - 2015



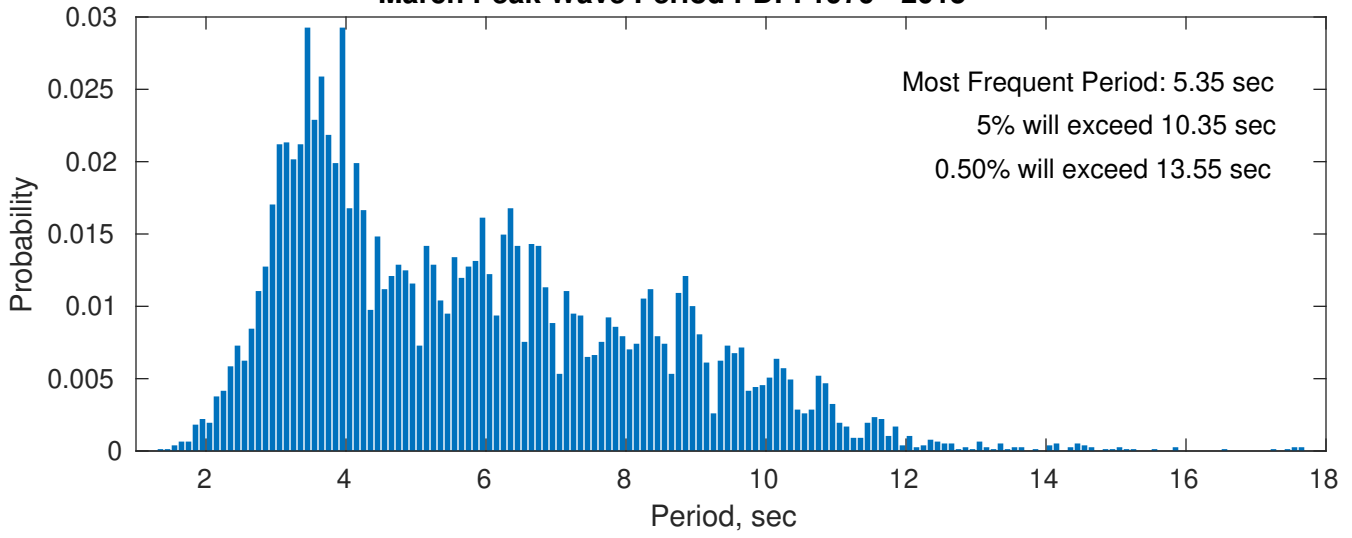
Wind-Sea: 46.05%



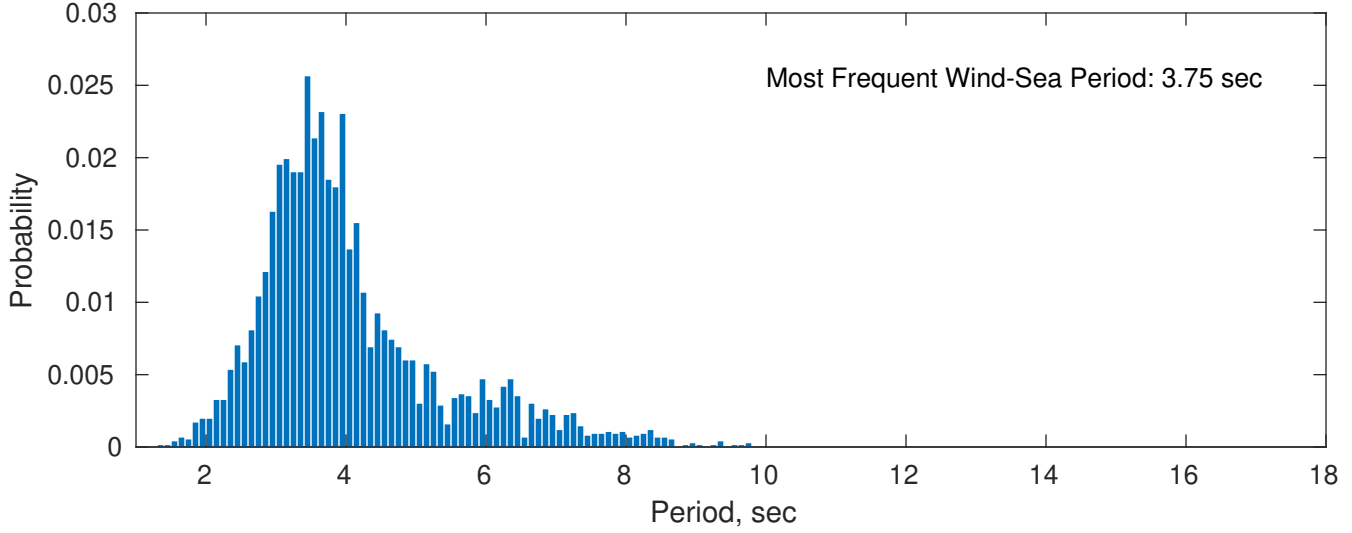
Swell: 53.95%



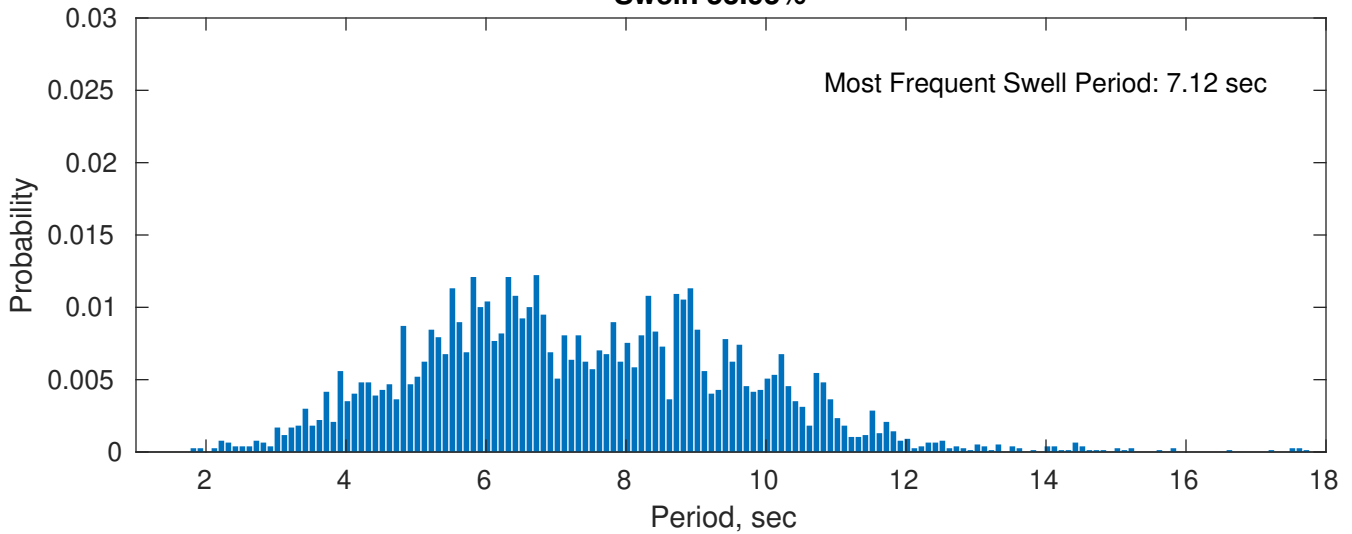
March Peak Wave Period PDF: 1979 - 2015



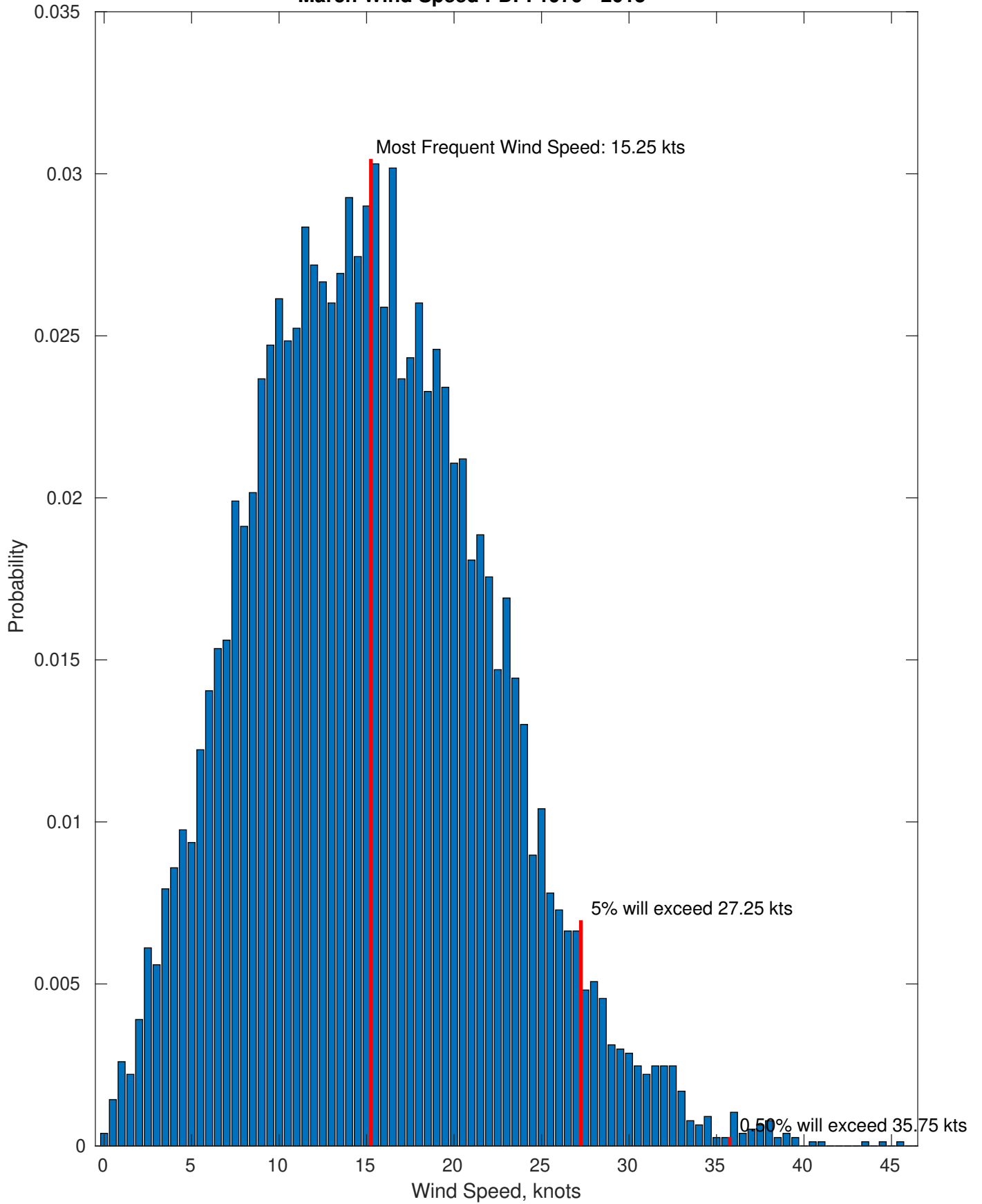
Wind-Sea: 46.05%



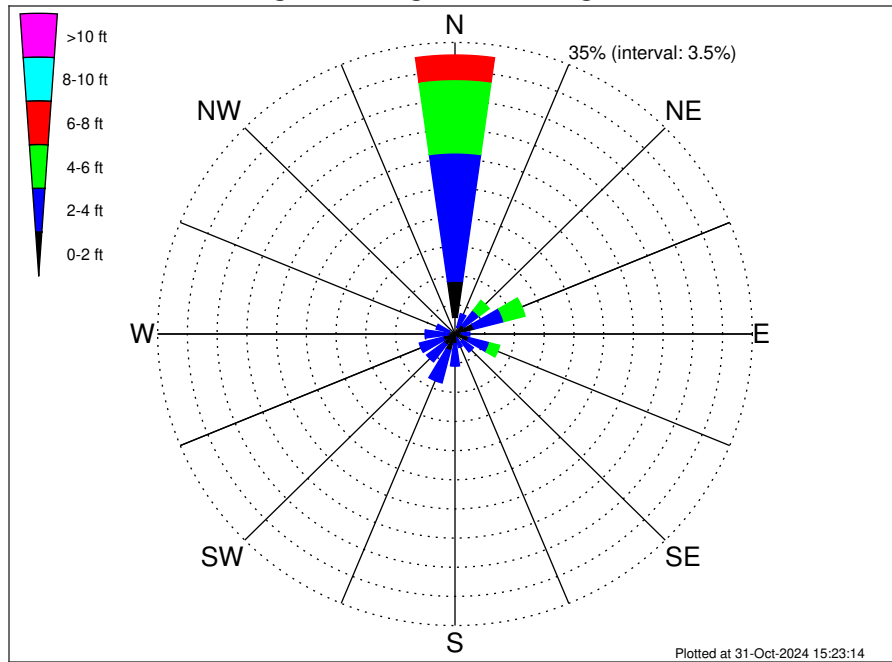
Swell: 53.95%



March Wind Speed PDF: 1979 - 2015



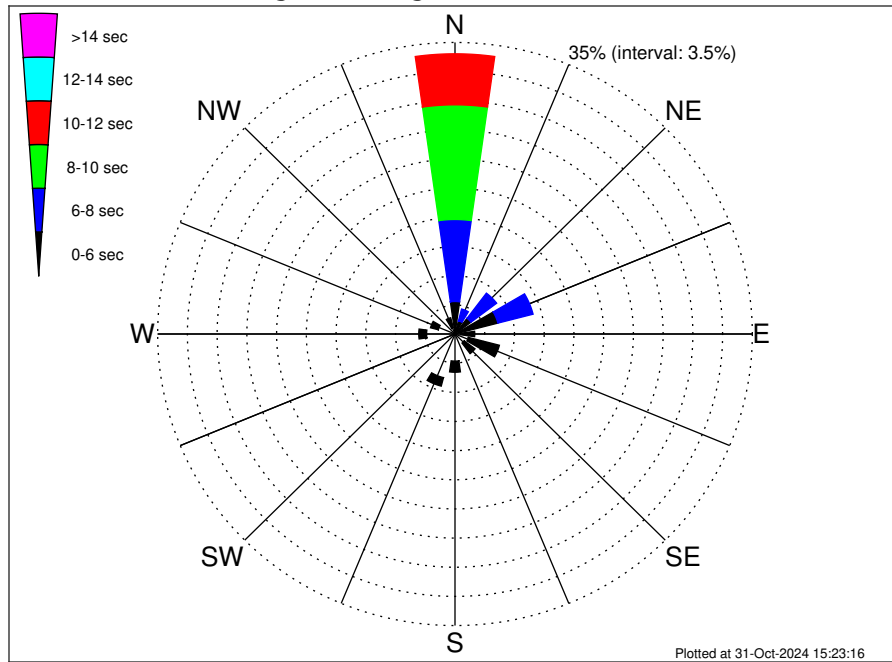
UK Cable Route GT - Landing Climatological WaveHeight Rose for March: 1979 - 2015



Joint Frequency Distribution Table

	N	NNE	NE	ENE	E	ESE	SE	SSE	S	SSW	SW	WSW	W	WNW	NW	NNW	Total
calm	2.00	0.26	0.21	0.34	0.16	0.31	0.35	0.10	0.12	0.35	0.26	0.23	0.14	0.05	0.03	0.42	5.33
1 - 2 ft	4.34	0.59	1.13	1.98	0.65	1.37	0.78	0.43	1.04	1.73	1.37	1.22	0.70	0.66	0.27	0.86	19.12
2 - 4 ft	15.40	1.68	2.21	3.64	0.95	2.54	1.59	1.14	2.71	3.99	2.56	2.89	2.68	1.59	0.74	0.82	47.13
4 - 6 ft	8.81	0.68	1.50	2.56	0.83	1.22	0.31	0.26	0.73	0.39	0.23	0.46	0.70	0.55	0.27	0.40	19.90
6 - 8 ft	2.94	0.34	0.86	0.79	0.39	0.25	0.03	0.07	•	•	0.03	0.05	0.04	0.13	0.14	0.10	6.15
8 - 10 ft	0.86	0.14	0.40	0.16	•	•	0.01	•	•	•	•	•	•	•	•	0.03	1.60
10 - 12 ft	0.38	0.03	0.21	0.05	•	•	•	•	•	•	•	•	•	•	•	•	0.66
12 - 14 ft	0.07	0.03	0.01	•	•	•	•	•	•	•	•	•	•	•	•	•	0.10
14 - 16 ft	•	•	•	•	•	•	•	•	•	•	•	•	•	•	•	•	•
16 - 18 ft	•	•	•	•	•	•	•	•	•	•	•	•	•	•	•	•	•
> 18 ft	•	•	•	•	•	•	•	•	•	•	•	•	•	•	•	•	•
Total	34.79	3.73	6.53	9.52	2.98	5.68	3.07	2.00	4.59	6.46	4.45	4.85	4.27	2.98	1.46	2.63	100.00

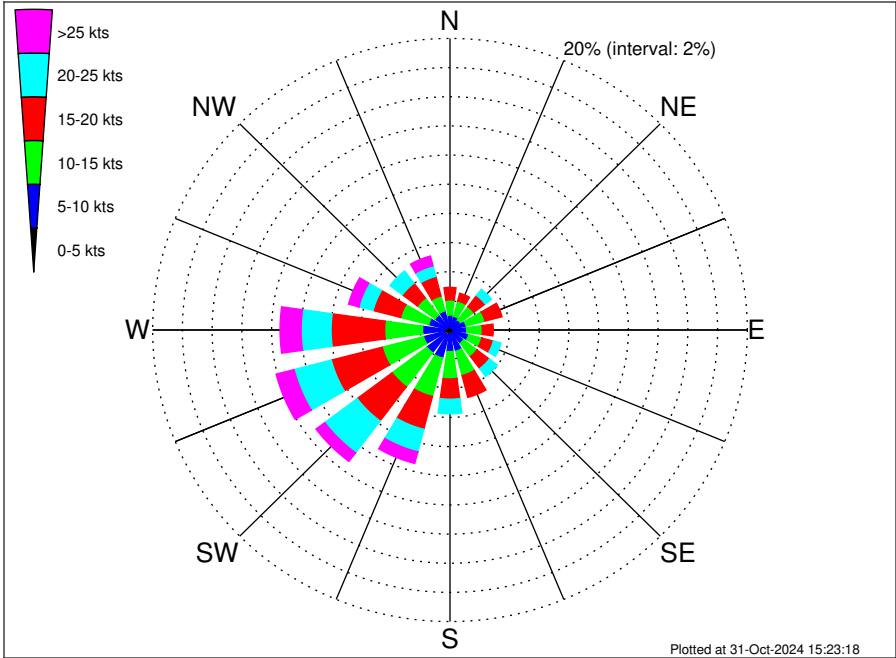
UK Cable Route GT - Landing Climatological WavePeriod Rose for March: 1979 - 2015



Joint Frequency Distribution Table

	N	NNE	NE	ENE	E	ESE	SE	SSE	S	SSW	SW	WSW	W	WNW	NW	NNW	Total
calm	•	•	•	•	•	•	•	•	•	•	•	•	•	•	•	•	•
1 - 2 sec	0.01	0.03	0.03	•	0.03	0.01	0.03	0.04	•	0.08	0.10	0.07	0.01	0.01	•	0.01	0.46
2 - 4 sec	0.33	0.36	0.49	0.47	0.62	1.61	1.34	1.24	3.25	5.33	3.93	4.14	3.33	2.02	0.86	0.75	30.07
4 - 6 sec	3.56	1.24	1.83	4.75	1.68	3.77	1.59	0.73	1.34	1.05	0.42	0.65	0.92	0.95	0.60	1.25	26.33
6 - 8 sec	9.85	1.47	3.79	4.28	0.65	0.29	0.12	•	•	•	•	•	•	•	•	0.61	21.05
8 - 10 sec	13.76	0.64	0.39	0.03	•	•	•	•	•	•	•	•	•	•	•	•	14.82
10 - 12 sec	6.13	•	•	•	•	•	•	•	•	•	•	•	•	•	•	•	6.13
12 - 14 sec	0.72	•	•	•	•	•	•	•	•	•	•	•	•	•	•	•	0.72
14 - 16 sec	0.35	•	•	•	•	•	•	•	•	•	•	•	•	•	•	•	0.35
18 - 20 sec	0.09	•	•	•	•	•	•	•	•	•	•	•	•	•	•	•	0.09
22 - 24 sec	•	•	•	•	•	•	•	•	•	•	•	•	•	•	•	•	•
Total	34.79	3.73	6.53	9.52	2.98	5.68	3.07	2.00	4.59	6.46	4.45	4.85	4.27	2.98	1.46	2.63	100.00

UK Cable Route GT - Landing Climatological Wind Rose for March: 1979 - 2015



Joint Frequency Distribution Table

	N	NNE	NE	ENE	E	ESE	SE	SSE	S	SSW	SW	WSW	W	WNW	NW	NNW	Total
calm	•	0.01	•	•	•	0.01	0.01	•	•	0.01	•	0.05	0.03	•	0.03	0.03	0.18
0 - 5 kts	0.16	0.30	0.18	0.20	0.25	0.29	0.27	0.40	0.27	0.35	0.40	0.33	0.42	0.27	0.23	0.35	4.67
5 - 10 kts	0.87	0.66	0.68	0.92	0.87	1.00	0.86	1.11	1.21	1.63	1.55	1.46	1.40	1.21	1.01	0.98	17.42
10 - 15 kts	1.04	1.08	1.14	1.31	1.05	0.91	1.13	1.72	1.87	2.72	2.93	2.87	2.55	1.95	1.47	1.05	26.81
15 - 20 kts	0.86	0.55	0.96	1.18	0.74	0.81	1.04	1.55	1.39	2.33	2.94	3.54	3.60	1.91	1.27	1.39	26.07
20 - 25 kts	0.49	0.29	0.53	0.46	0.31	0.52	0.66	0.49	1.00	1.60	2.73	2.59	2.02	0.99	1.04	0.75	16.48
25 - 30 kts	0.21	0.05	0.22	0.21	0.13	0.07	0.23	0.14	0.34	0.64	0.62	1.03	1.00	0.46	0.20	0.39	5.93
30 - 35 kts	0.18	0.03	0.08	0.09	0.08	0.03	0.01	0.07	0.12	0.17	0.09	0.13	0.35	0.18	0.08	0.22	1.90
35 - 40 kts	0.04	0.04	0.03	0.01	•	•	•	0.01	0.01	0.01	0.03	0.09	0.07	0.08	0.03	0.04	0.48
40 - 45 kts	•	•	•	•	•	•	•	0.01	•	•	•	•	•	•	0.01	0.03	0.05
45 - 50 kts	•	•	•	•	•	•	•	•	•	•	•	•	•	•	•	0.01	0.01
Total	3.85	3.00	3.82	4.38	3.43	3.63	4.23	5.50	6.22	9.46	11.29	12.08	11.43	7.05	5.37	5.24	100.00