

UK Cable Route GT - Landing - May

Latitude: 53.31 N Longitude: 0.35 E

Weather Days

Wave Height > 6.0 ft Mean: 1.3 days Range: 0.1 - 2.5 days p50:2 days p75:1 days p90:0.5 days
Wave Height > 7.0 ft Mean: 0.6 days Range: 0.0 - 1.4 days p50:30 days p75:1.5 days p90:1 days
Wave Height > 8.0 ft Mean: 0.2 days Range: 0.0 - 0.5 days p50:30 days p75:30 days p90:1 days
Wind Speed > 15.0 knots Mean: 9.2 days Range: 6.1 - 12.2 days p50:9.5 days p75:7.5 days p90:6 days
Wind Speed > 20.0 knots Mean: 2.5 days Range: 1.2 - 3.8 days p50:2.5 days p75:2 days p90:1 days
Wind Speed > 25.0 knots Mean: 0.3 days Range: 0.0 - 0.7 days p50:0.5 days p75:0.5 days p90:0.5 days

Working Window

Wave Height < 6.0 ft	A 1 day or longer window will statistically occur 1.9 times per month A 2 day or longer window will statistically occur 1.8 times per month A 3 day or longer window will statistically occur 1.7 times per month
Wave Height < 7.0 ft	A 1 day or longer window will statistically occur 1.4 times per month A 2 day or longer window will statistically occur 1.3 times per month A 3 day or longer window will statistically occur 1.2 times per month
Wave Height < 8.0 ft	A 1 day or longer window will statistically occur 1.1 times per month A 2 day or longer window will statistically occur 1.0 times per month A 3 day or longer window will statistically occur 1.0 times per month

Waves

Mean Height: 2 - 4 ft
The wave heights will occasionally reach 8 - 10 ft, but rarely higher.
Mean Period: 4 - 6 sec
The wave periods will occasionally reach 10 - 12 sec, but rarely longer.
Principle Direction, from: N
WindSea/Swell: 41% / 59%

Winds

Mean Speed: 10 - 15 kts
The winds will occasionally reach 25 - 30 kts, but rarely greater.
Principle Direction, from: SW

Currents

Mean Speed: 0.01-0.25 kts
The currents will occasionally reach 0.75-1.00 kts, but rarely greater.
Principle Direction, to: ENE

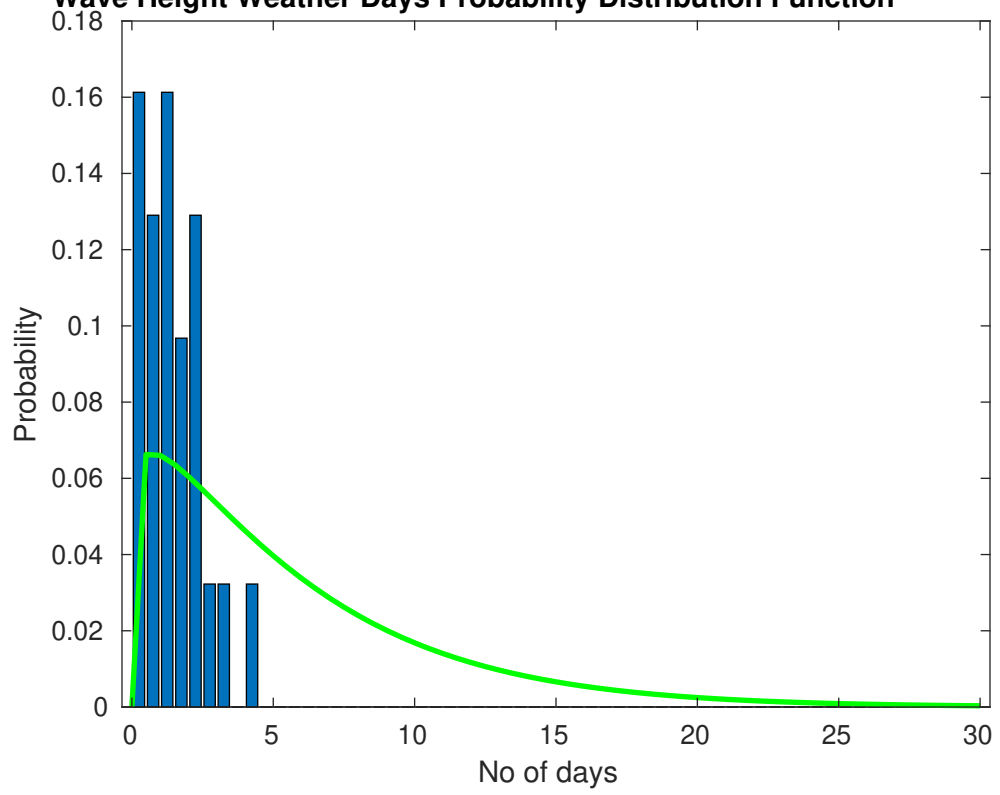
Weather Days

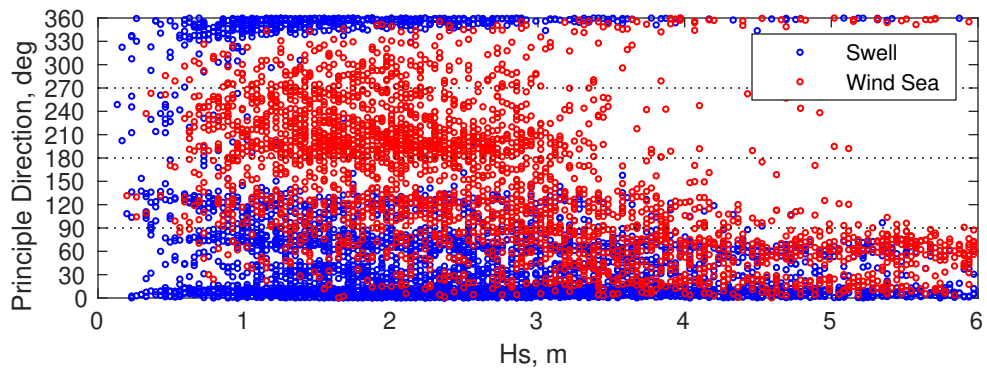
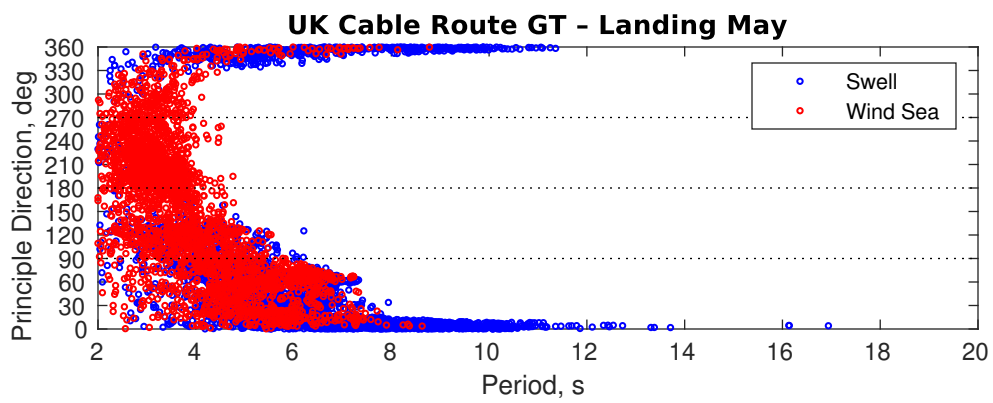
Current Speed > 1.0 knots Mean: 0.0 days Range: 0.0 - 0.0 days p50:1 days p75:1 days p90:1 days
Current Speed > 1.5 knots Mean: 0.0 days Range: 0.0 - 0.0 days p50:1 days p75:1 days p90:1 days
Current Speed > 2.0 knots Mean: 0.0 days Range: 0.0 - 0.0 days p50:1 days p75:1 days p90:1 days

Severe Storms

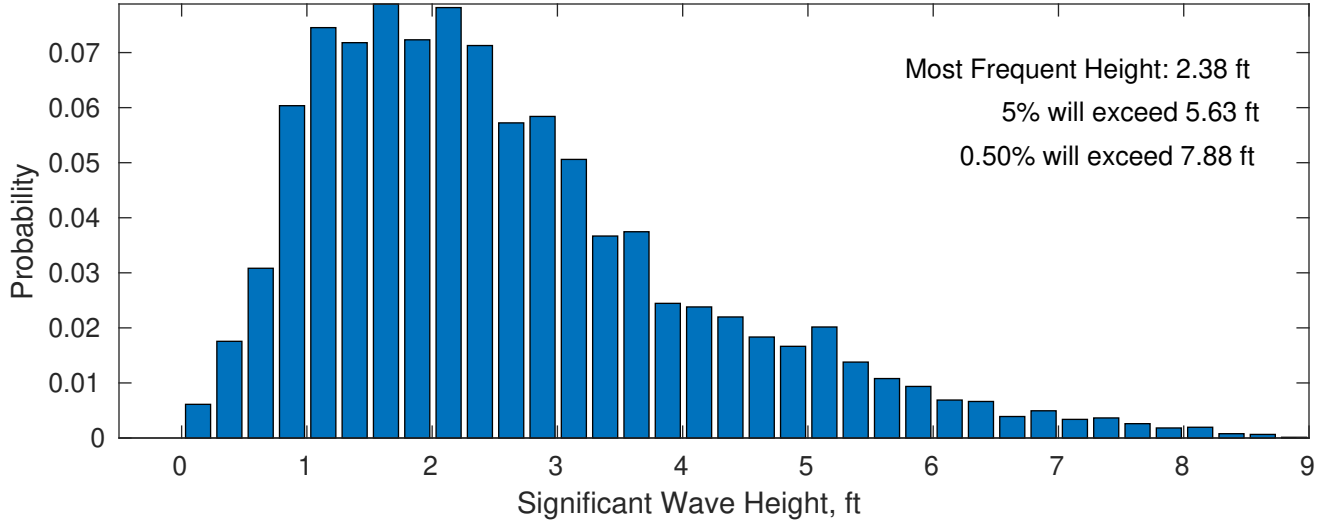
Severe storms with gale force winds and extreme waves are not expected during this month.

Wave Height Weather Days Probability Distribution Function

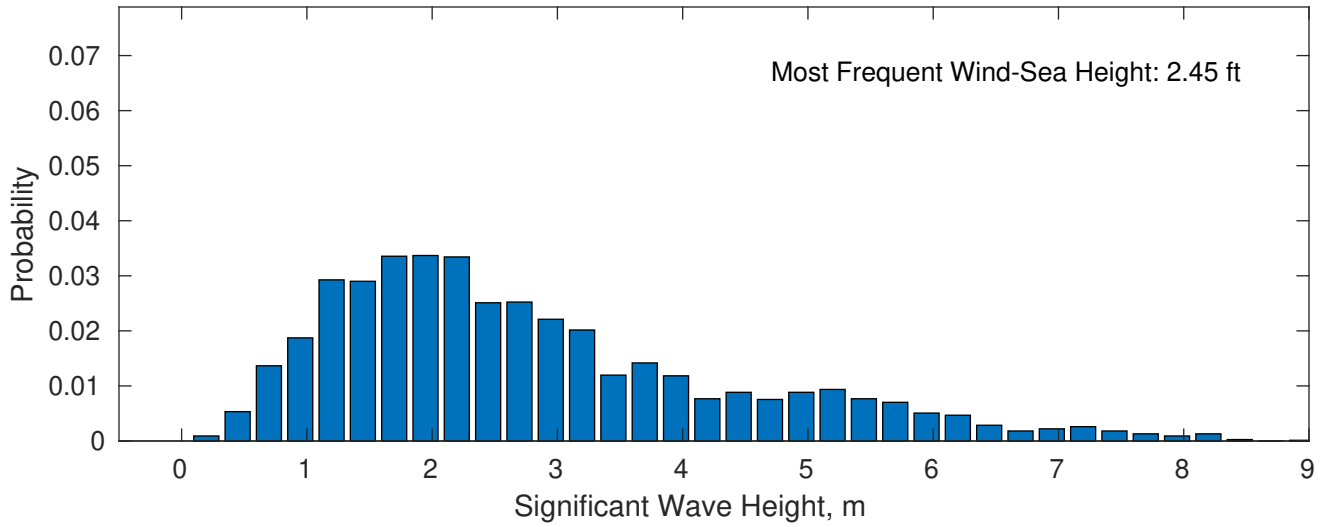




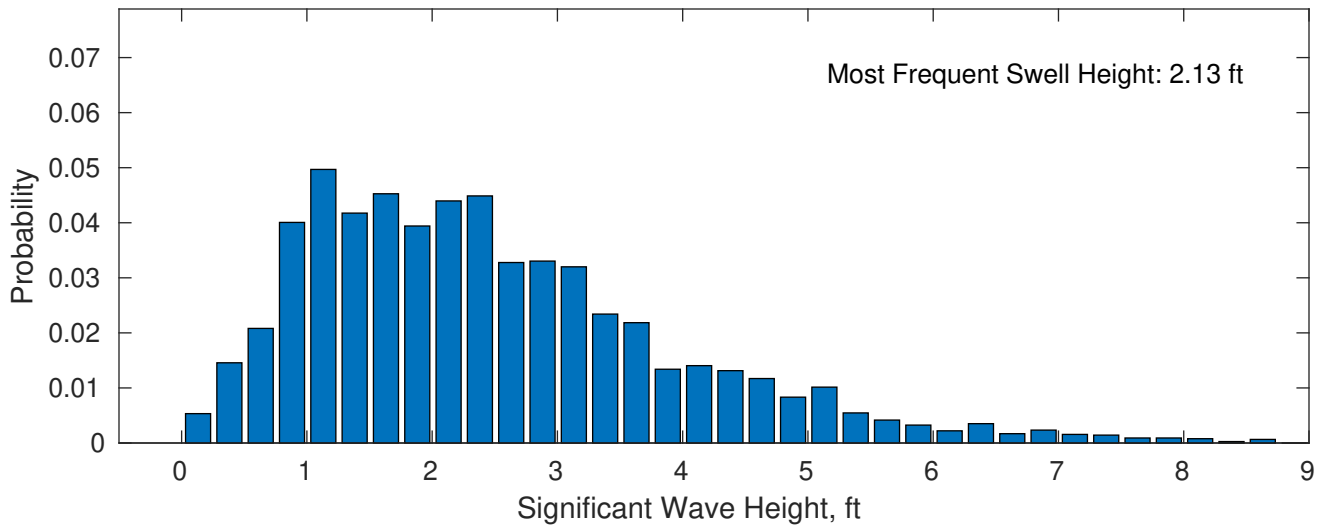
May Wave Height PDF: 1979 - 2015



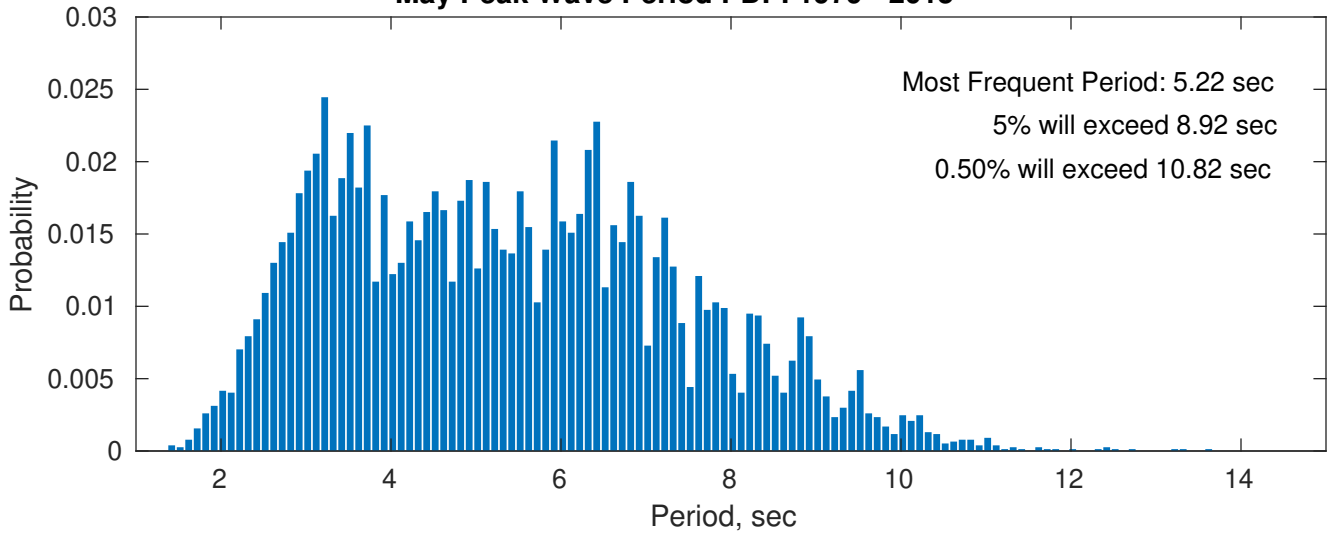
Wind-Sea: 41.06%



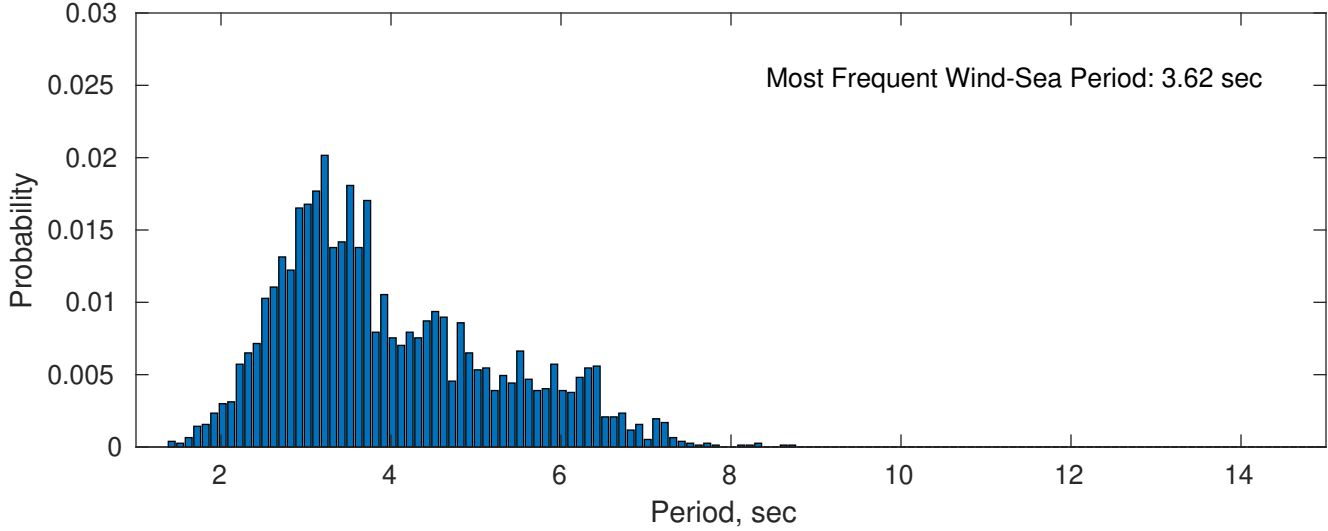
Swell: 58.94%



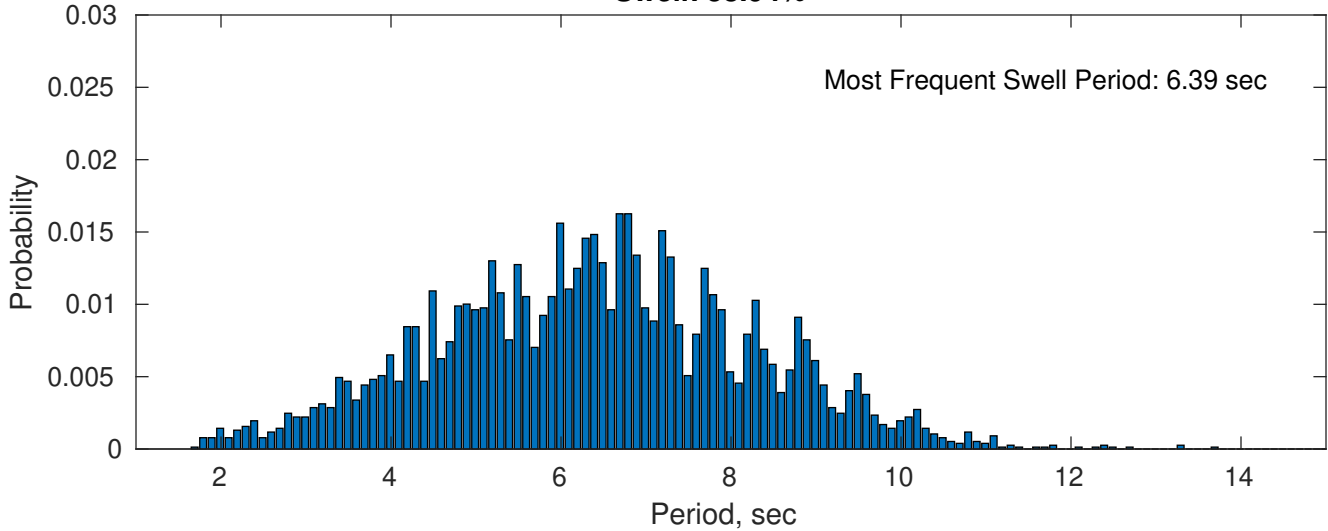
May Peak Wave Period PDF: 1979 - 2015



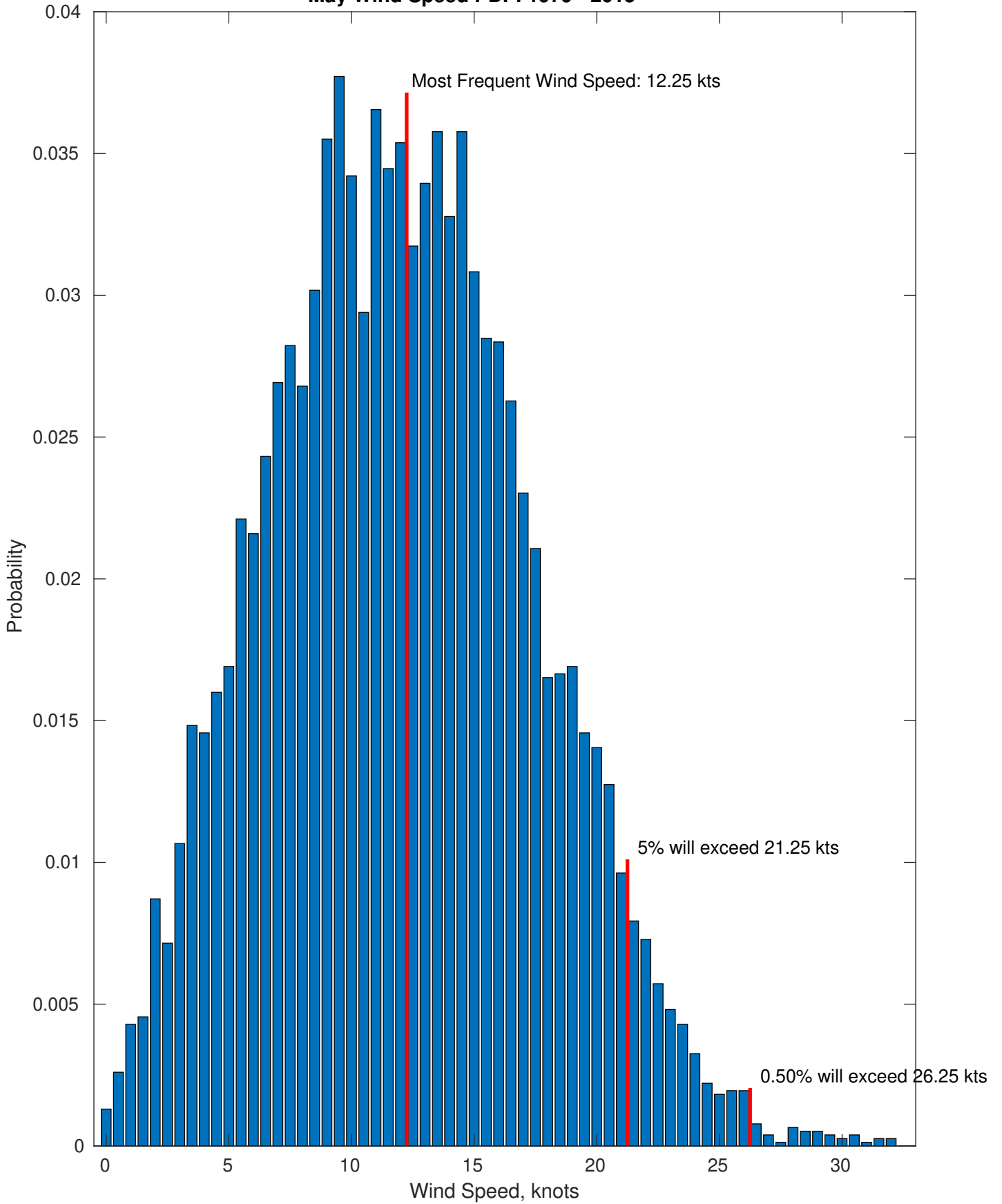
Wind-Sea: 41.06%



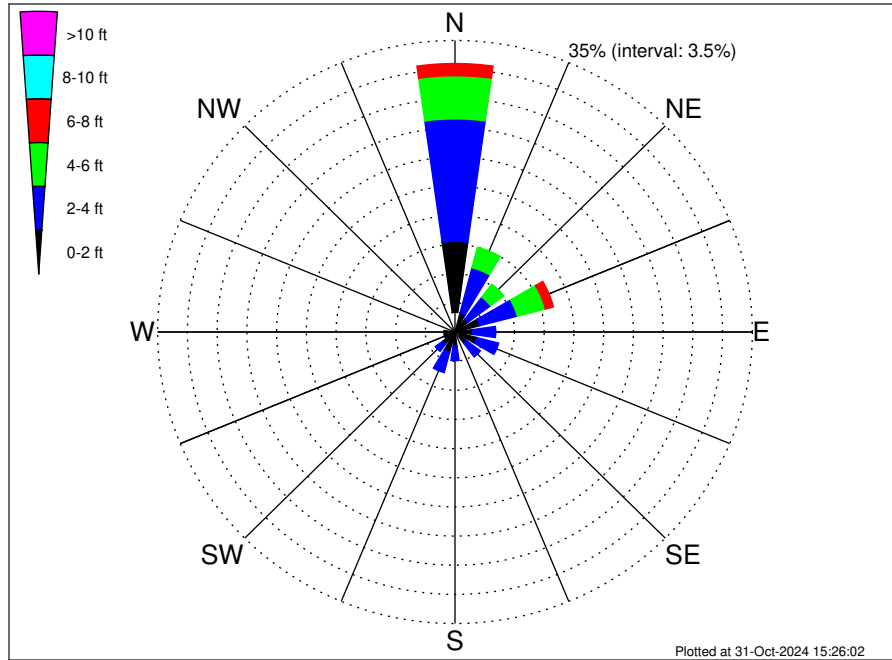
Swell: 58.94%



May Wind Speed PDF: 1979 - 2015



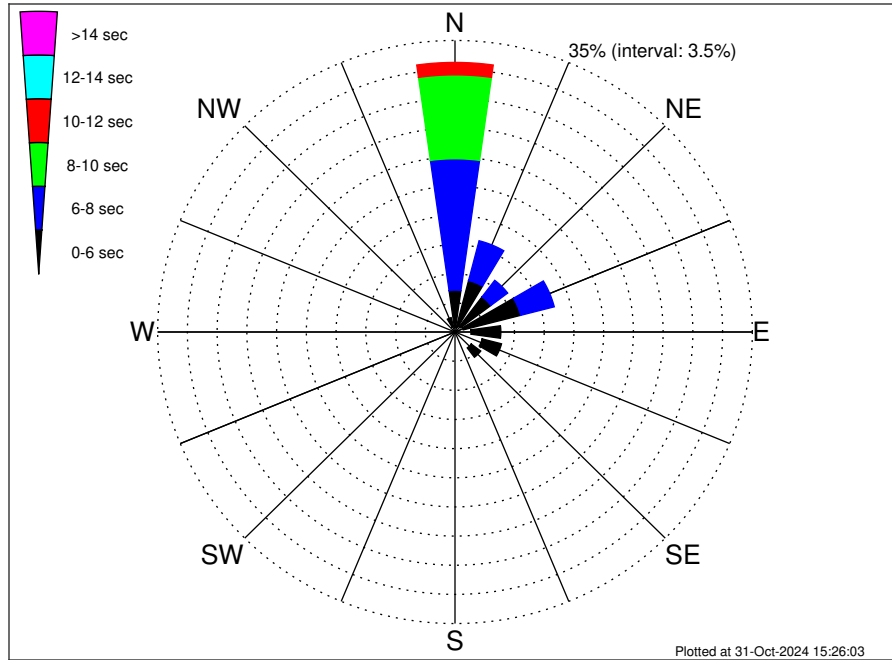
UK Cable Route GT - Landing Climatological WaveHeight Rose for May: 1979 - 2015



Joint Frequency Distribution Table

	N	NNE	NE	ENE	E	ESE	SE	SSE	S	SSW	SW	WSW	W	WNW	NW	NNW	Total
calm	2.35	0.40	0.25	0.55	0.51	0.73	0.62	0.17	0.29	0.30	0.49	0.43	0.25	0.17	0.25	0.64	8.39
1 - 2 ft	8.52	2.00	1.73	2.45	1.56	1.91	1.09	0.55	1.40	2.19	1.35	0.91	1.07	0.66	0.36	0.77	28.52
2 - 4 ft	14.71	5.57	3.26	4.59	2.73	2.67	2.03	0.87	1.76	2.55	1.07	0.69	0.62	0.46	0.29	0.44	44.30
4 - 6 ft	5.18	2.54	1.95	3.41	0.70	0.35	0.07	0.07	0.05	0.04	•	0.05	0.03	•	•	0.03	14.45
6 - 8 ft	1.47	0.72	0.49	0.99	0.05	•	•	•	•	•	•	•	•	•	•	•	3.72
8 - 10 ft	0.29	0.16	0.08	0.09	•	•	•	•	•	•	•	•	•	•	•	•	0.61
10 - 12 ft	•	•	•	•	•	•	•	•	•	•	•	•	•	•	•	•	•
12 - 14 ft	•	•	•	•	•	•	•	•	•	•	•	•	•	•	•	•	•
14 - 16 ft	•	•	•	•	•	•	•	•	•	•	•	•	•	•	•	•	•
16 - 18 ft	•	•	•	•	•	•	•	•	•	•	•	•	•	•	•	•	•
> 18 ft	•	•	•	•	•	•	•	•	•	•	•	•	•	•	•	•	•
Total	32.52	11.38	7.77	12.07	5.55	5.66	3.81	1.65	3.50	5.07	2.91	2.08	1.96	1.29	0.90	1.87	100.00

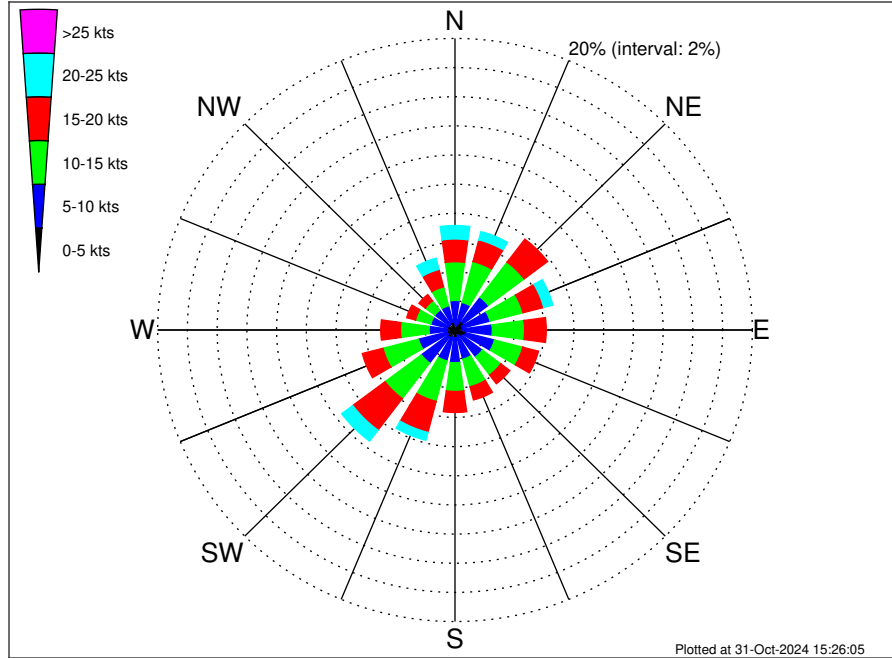
UK Cable Route GT - Landing Climatological WavePeriod Rose for May: 1979 - 2015



Joint Frequency Distribution Table

	N	NNE	NE	ENE	E	ESE	SE	SSE	S	SSW	SW	WSW	W	WNW	NW	NNW	Total
calm	•	•	•	•	•	•	•	•	•	•	•	•	•	•	•	•	•
1 - 2 sec	•	0.01	0.01	0.03	0.08	0.12	0.04	0.08	0.05	0.07	0.07	0.13	0.07	0.04	0.04	•	0.82
2 - 4 sec	0.52	0.62	0.81	0.98	1.81	3.19	2.35	1.37	3.25	4.94	2.85	1.87	1.87	1.24	0.81	0.69	29.16
4 - 6 sec	4.50	5.75	4.47	6.98	3.51	2.35	1.40	0.21	0.20	0.07	•	0.08	0.03	0.01	0.05	1.09	30.71
6 - 8 sec	15.78	4.93	2.47	4.08	0.16	•	0.01	•	•	•	•	•	•	•	•	0.09	27.52
8 - 10 sec	10.07	0.07	•	•	•	•	•	•	•	•	•	•	•	•	•	•	10.13
10 - 12 sec	1.50	•	•	•	•	•	•	•	•	•	•	•	•	•	•	•	1.50
12 - 14 sec	0.12	•	•	•	•	•	•	•	•	•	•	•	•	•	•	•	0.12
14 - 16 sec	•	•	•	•	•	•	•	•	•	•	•	•	•	•	•	•	•
18 - 20 sec	0.04	•	•	•	•	•	•	•	•	•	•	•	•	•	•	•	0.04
22 - 24 sec	•	•	•	•	•	•	•	•	•	•	•	•	•	•	•	•	•
Total	32.52	11.38	7.77	12.07	5.55	5.66	3.81	1.65	3.50	5.07	2.91	2.08	1.96	1.29	0.90	1.87	100.00

UK Cable Route GT - Landing Climatological Wind Rose for May: 1979 - 2015



Joint Frequency Distribution Table

	N	NNE	NE	ENE	E	ESE	SE	SSE	S	SSW	SW	WSW	W	WNW	NW	NNW	Total
calm	0.03	•	0.03	0.01	0.04	0.07	0.03	0.04	•	0.04	•	0.03	0.03	•	0.03	0.04	0.39
0 - 5 kts	0.38	0.31	0.69	0.51	0.49	0.68	0.56	0.36	0.53	0.43	0.62	0.52	0.48	0.52	0.46	0.53	8.08
5 - 10 kts	1.63	1.64	2.09	1.91	1.98	2.00	1.72	1.66	1.72	1.72	2.21	1.99	1.24	1.16	1.22	1.14	27.03
10 - 15 kts	2.65	2.90	3.02	2.29	2.17	1.96	1.56	1.95	1.96	2.87	3.06	2.47	1.93	1.07	0.79	1.34	34.00
15 - 20 kts	1.56	1.53	1.98	1.44	1.46	1.09	0.75	0.94	1.44	2.20	2.72	1.43	1.33	0.61	0.55	1.24	22.27
20 - 25 kts	0.92	0.59	0.44	0.64	0.42	0.09	0.20	0.25	0.29	0.56	0.94	0.43	0.25	0.25	0.16	0.79	7.19
25 - 30 kts	0.23	0.07	0.08	0.18	•	•	•	•	0.07	0.04	0.01	0.08	0.01	0.01	•	0.13	0.91
30 - 35 kts	0.03	0.04	•	•	•	•	•	•	0.01	0.01	•	0.04	•	•	•	•	0.13
35 - 40 kts	•	•	•	•	•	•	•	•	•	•	•	•	•	•	•	•	•
40 - 45 kts	•	•	•	•	•	•	•	•	•	•	•	•	•	•	•	•	•
45 - 50 kts	•	•	•	•	•	•	•	•	•	•	•	•	•	•	•	•	•
Total	7.43	7.08	8.32	6.98	6.56	5.89	4.81	5.20	6.02	7.87	9.56	6.98	5.25	3.62	3.20	5.22	100.00