

VNE 522 & 544 ECR Long Beach NY Shore Landing - April

Latitude: 40.56 N Longitude: 73.70 W

Weather Days

Wave Height > 4.0 ft Mean: 4.5 days Range: 1.6 - 7.5 days p50:5 days p75:2.5 days p90:1 days

Wave Height > 5.0 ft Mean: 2.0 days Range: 0.3 - 3.8 days p50:2 days p75:1 days p90:0.5 days

Wave Height > 6.0 ft Mean: 1.0 days Range: 0.0 - 2.0 days p50:1 days p75:0.5 days p90:0.5 days

Wind Speed > 20.0 knots Mean: 1.1 days Range: 0.2 - 2.1 days p50:1.5 days p75:1 days p90:0.5 days

Wind Speed > 25.0 knots Mean: 0.2 days Range: 0.0 - 0.4 days p50:0.5 days p75:0.5 days p90:0.5 days

Wind Speed > 30.0 knots Mean: 0.0 days Range: 0.0 - 0.1 days p50:0.5 days p75:0.5 days p90:0.5 days

Working Window Probability

Wave Height < 4.0 ft 3 days or longer: 73%

5 days or longer: 37%

7 days or longer: 24%

Wave Height < 5.0 ft 3 days or longer: 80%

5 days or longer: 52%

7 days or longer: 41%

Wave Height < 6.0 ft 3 days or longer: 90%

5 days or longer: 69%

7 days or longer: 59%

Waves

Mean Height: 2 - 4 ft

The wave heights will occasionally reach 6 - 8 ft, but rarely higher.

Mean Period: 6 - 8 sec

The wave periods will occasionally reach 14 - 16 sec, but rarely longer.

Principle Direction, from: S

WindSea/Swell: 19% / 81%

Winds

Mean Speed: 10 - 15 kts

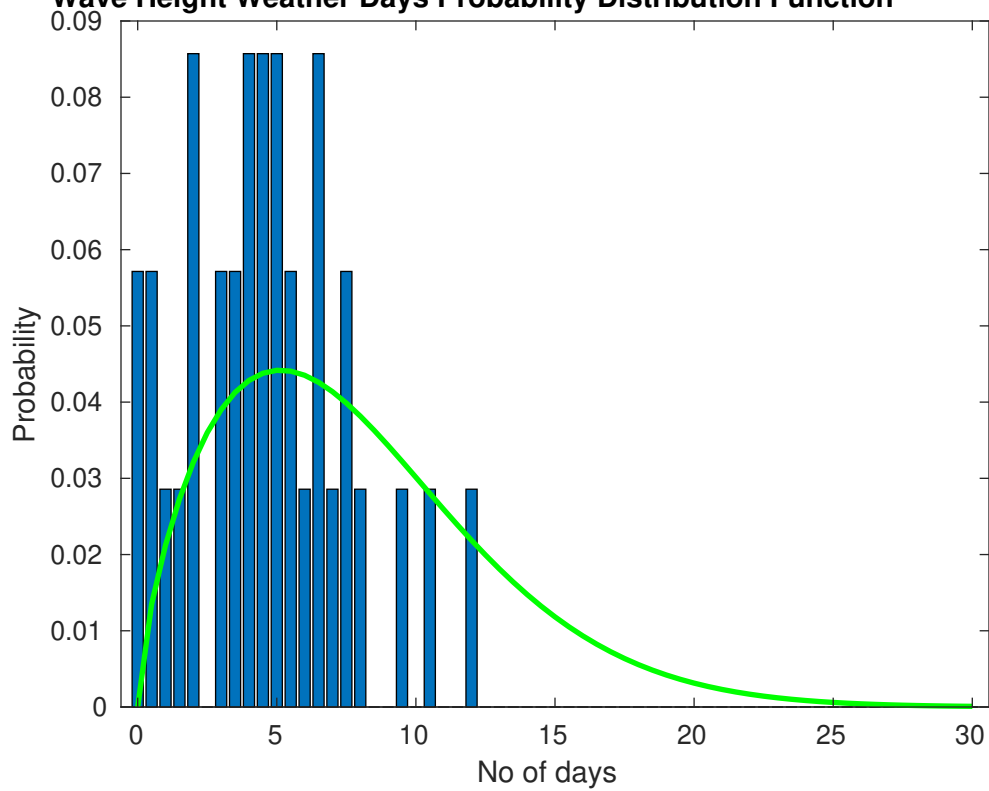
The winds will occasionally reach 20 - 25 kts, but rarely greater.

Principle Direction, from: SSW

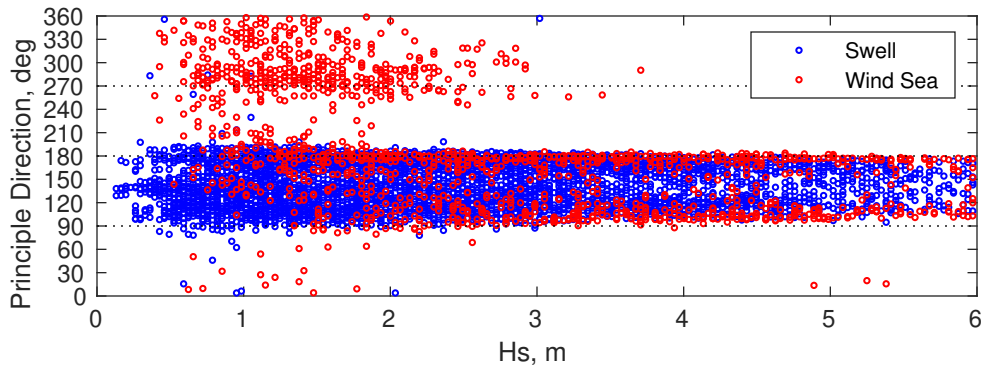
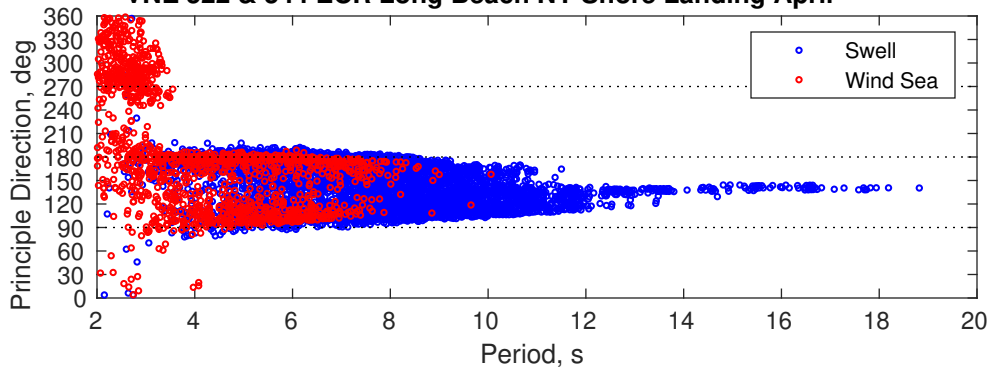
Severe Storms

Severe storms with gale force winds and extreme waves are not expected during this month.

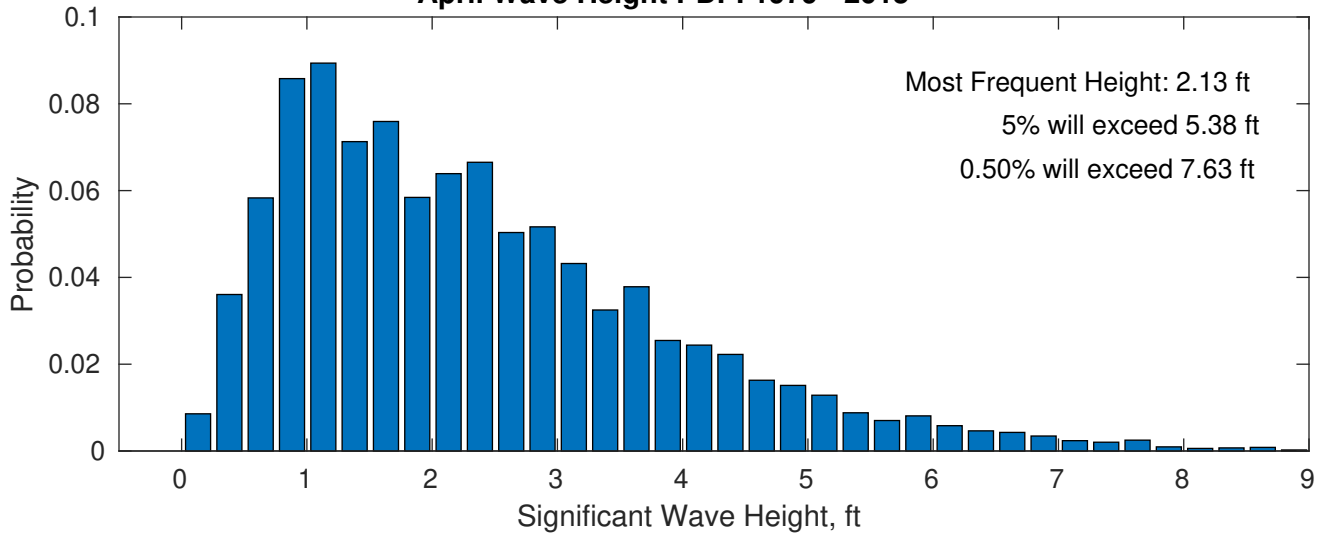
Wave Height Weather Days Probability Distribution Function



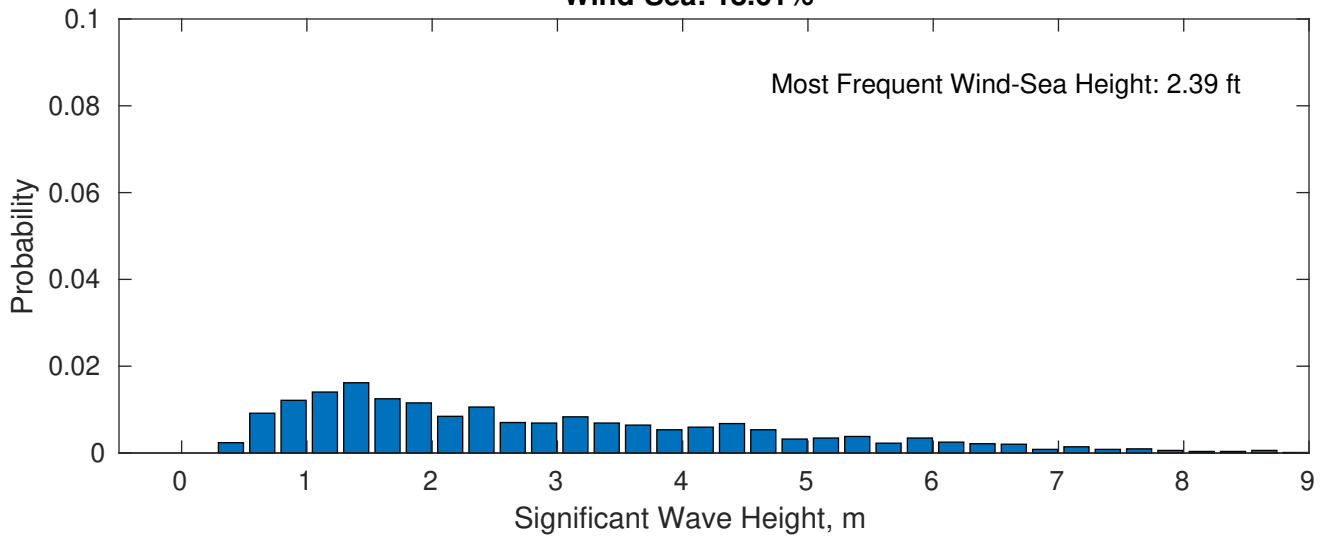
VNE 522 & 544 ECR Long Beach NY Shore Landing April



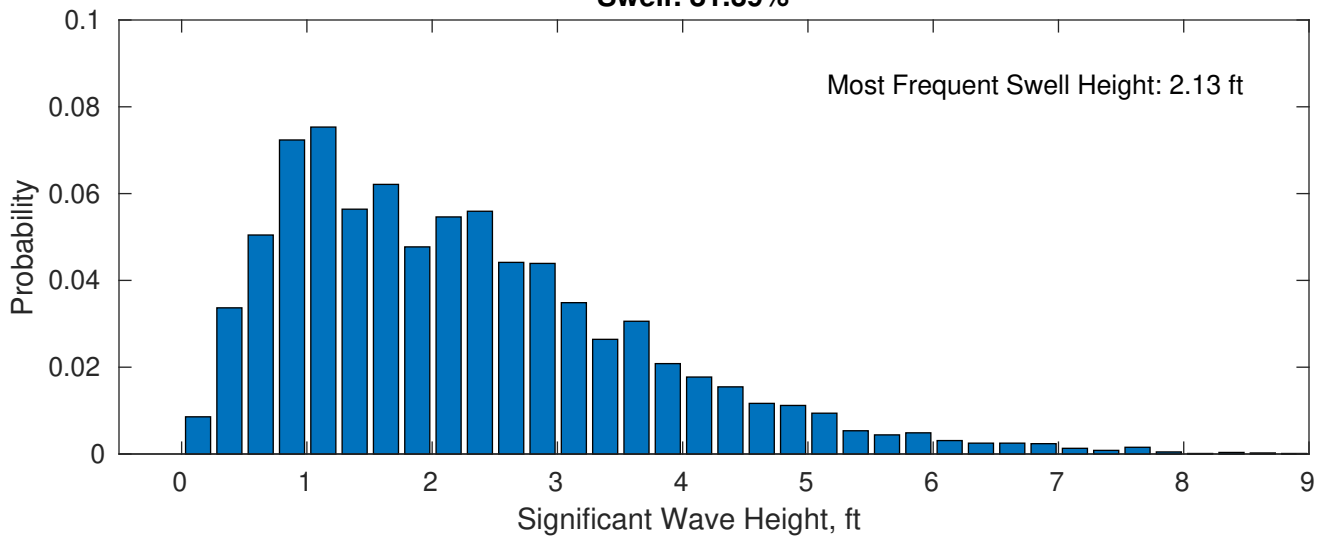
April Wave Height PDF: 1979 - 2015



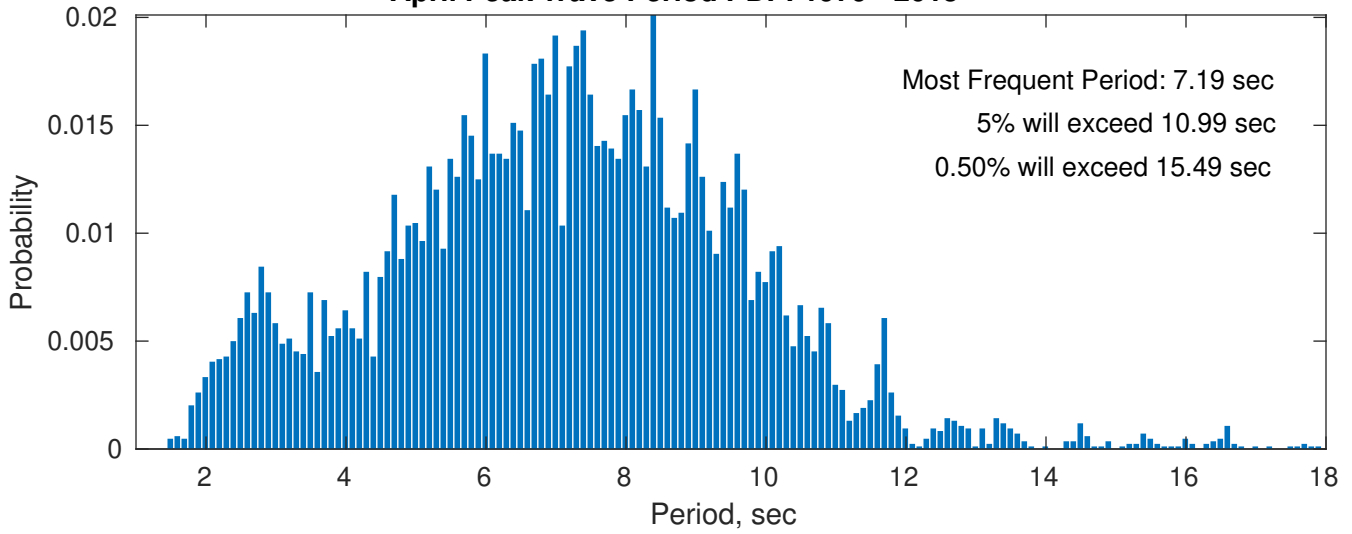
Wind-Sea: 18.61%



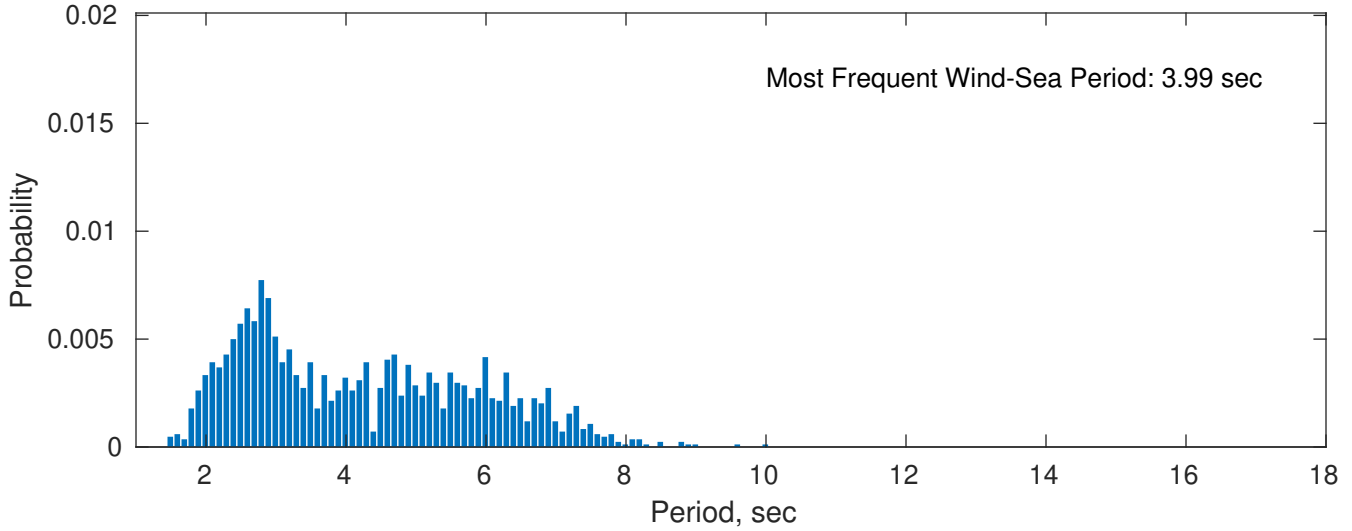
Swell: 81.39%



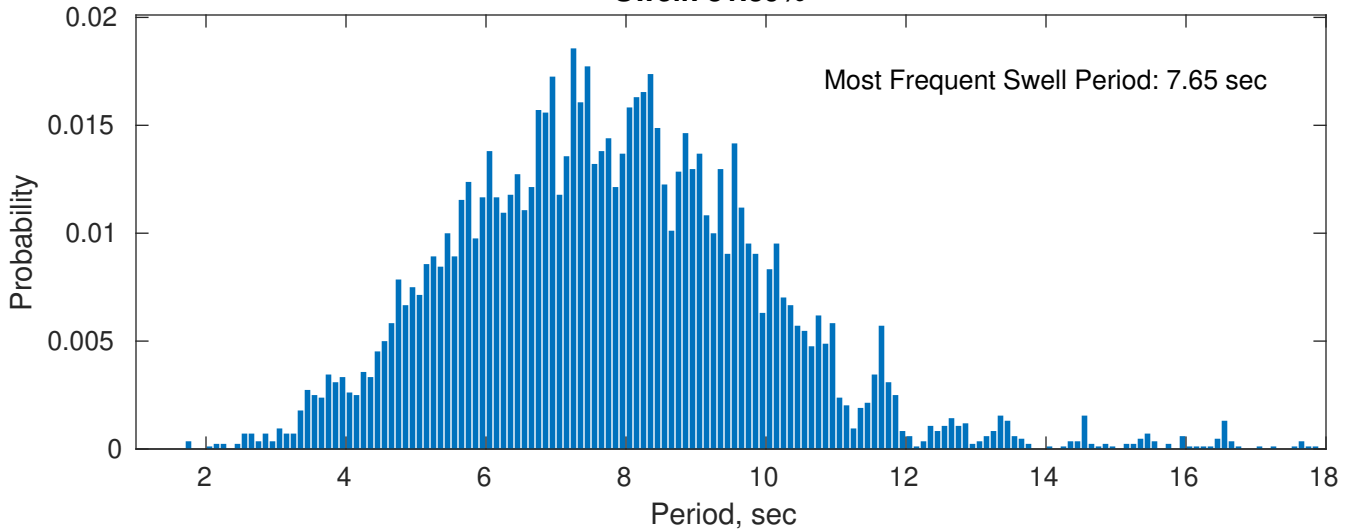
April Peak Wave Period PDF: 1979 - 2015



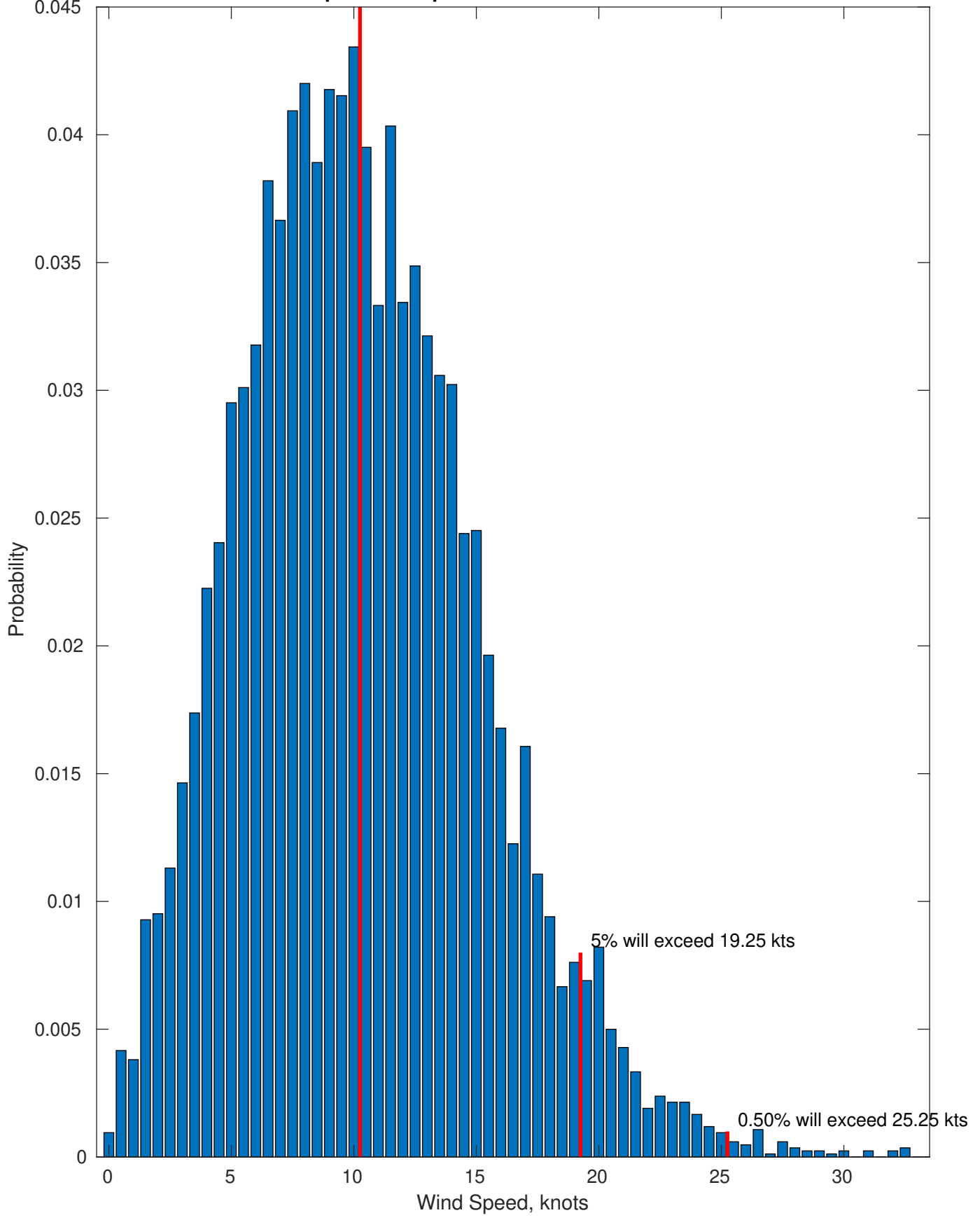
Wind-Sea: 18.61%



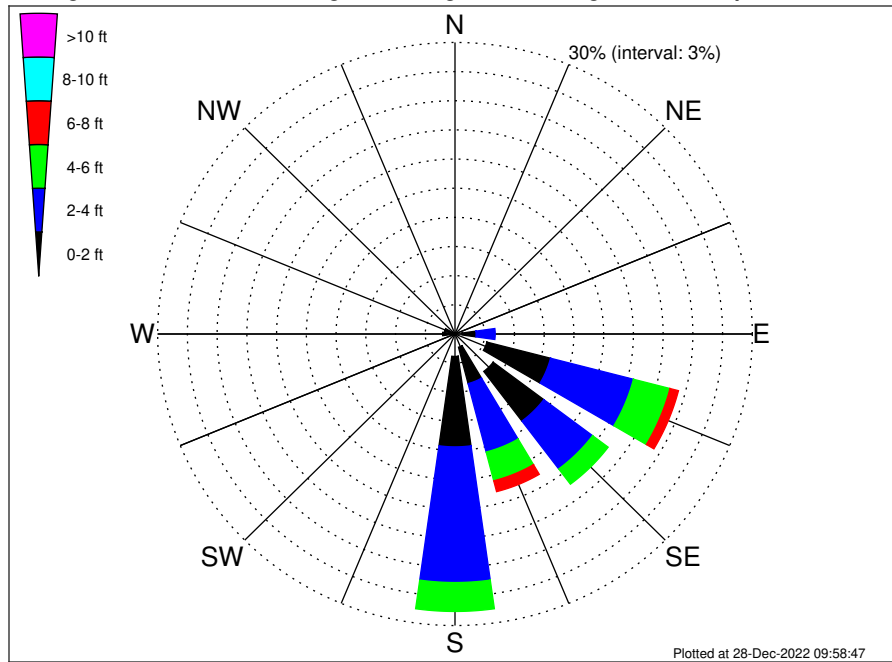
Swell: 81.39%



April Wind Speed PDF: 1979 - 2015
Most Frequent Wind Speed: 10.25 kts



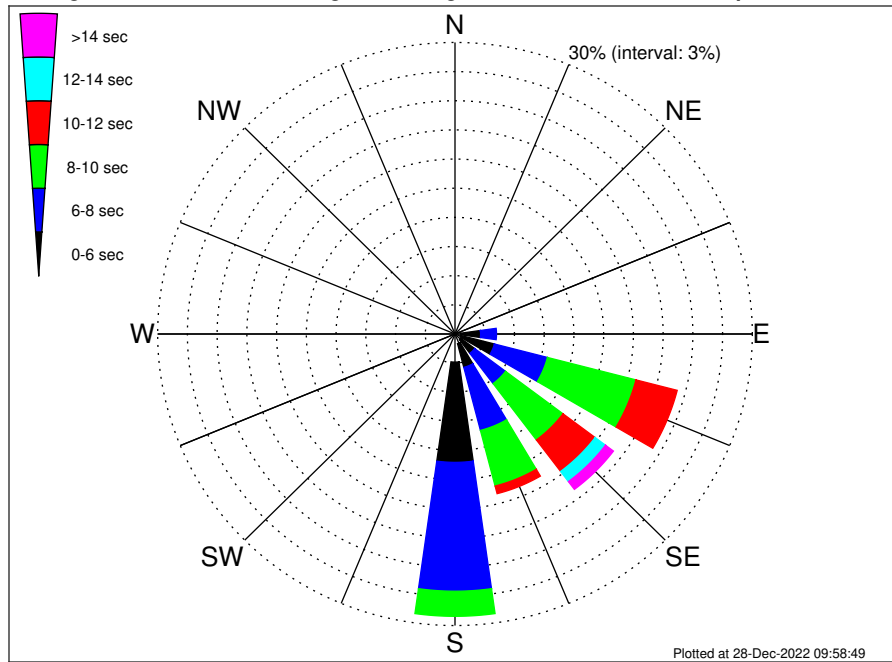
VNE 522 & 544 ECR Long Beach NY Shore Landing Climatological WaveHeight Rose for April: 1979 - 2015



Joint Frequency Distribution Table

	N	NNE	NE	ENE	E	ESE	SE	SSE	S	SSW	SW	WSW	W	WNW	NW	NNW	Total
calm	0.12	0.02	0.02	0.04	0.71	3.32	4.82	1.40	2.31	0.18	0.10	0.12	0.26	0.33	0.10	0.25	14.10
1 - 2 ft	0.18	0.06	0.01	0.04	1.42	6.64	6.40	3.87	9.31	0.36	0.07	0.19	0.99	0.76	0.39	0.42	31.10
2 - 4 ft	0.04	.	.	0.02	1.93	8.64	6.16	7.27	13.96	0.01	.	0.12	0.23	0.37	0.13	0.02	38.90
4 - 6 ft	.	0.04	.	.	0.60	3.81	1.96	3.06	2.98	12.44
6 - 8 ft	0.88	0.54	1.15	0.48	3.05
8 - 10 ft	0.08	0.17	0.07	0.32
10 - 12 ft	0.05	0.05	0.10
12 - 14 ft
14 - 16 ft
16 - 18 ft
> 18 ft
Total	0.33	0.12	0.04	0.10	4.65	23.29	20.02	16.97	29.10	0.55	0.17	0.43	1.48	1.46	0.62	0.69	100.00

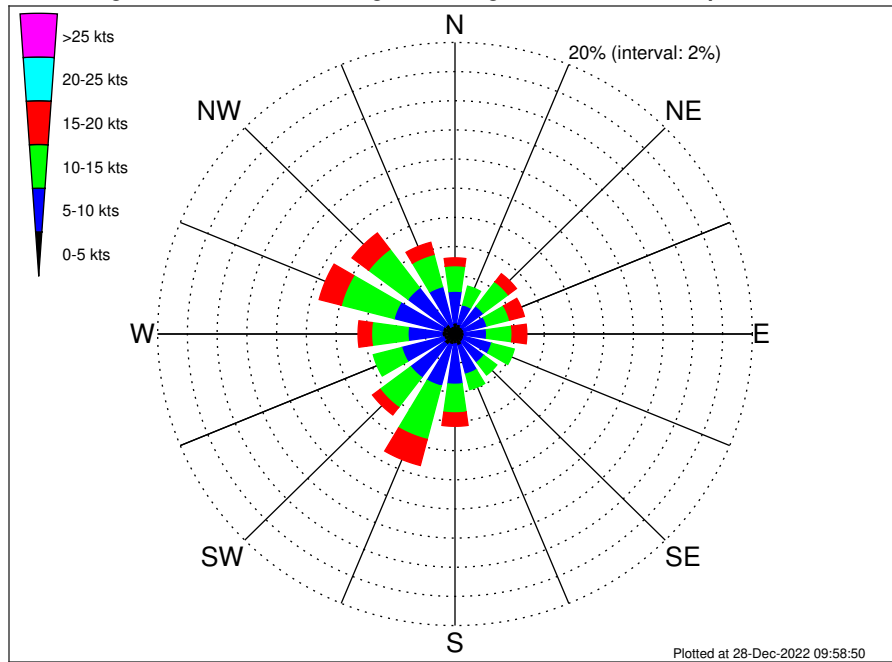
VNE 522 & 544 ECR Long Beach NY Shore Landing Climatological WavePeriod Rose for April: 1979 - 2015



Joint Frequency Distribution Table

	N	NNE	NE	ENE	E	ESE	SE	SSE	S	SSW	SW	WSW	W	WNW	NW	NNW	Total
calm	•	•	•	•	•	•	•	•	•	•	•	•	•	•	•	•	•
1 - 2 sec	0.07	0.01	0.01	•	•	•	•	0.04	•	0.02	0.06	0.07	0.07	0.12	0.06	0.12	0.65
2 - 4 sec	0.26	0.08	0.02	0.10	0.58	0.58	0.74	0.99	2.89	0.43	0.11	0.36	1.40	1.34	0.56	0.57	11.02
4 - 6 sec	•	0.02	•	•	2.00	3.52	1.75	2.52	10.32	0.08	•	•	•	•	•	•	20.22
6 - 8 sec	•	•	•	•	1.61	5.53	3.90	6.70	13.26	0.01	•	•	•	•	•	•	31.01
8 - 10 sec	•	•	•	•	0.46	9.22	7.26	5.91	2.58	•	•	•	•	•	•	•	25.44
10 - 12 sec	•	•	•	•	•	4.30	4.06	0.81	0.05	•	•	•	•	•	•	•	9.21
12 - 14 sec	•	•	•	•	•	0.13	1.31	•	•	•	•	•	•	•	•	•	1.44
14 - 16 sec	•	•	•	•	•	•	0.58	•	•	•	•	•	•	•	•	•	0.58
18 - 20 sec	•	•	•	•	•	•	0.39	•	•	•	•	•	•	•	•	•	0.39
22 - 24 sec	•	•	•	•	•	•	0.02	•	•	•	•	•	•	•	•	•	0.02
Total	0.33	0.12	0.04	0.10	4.65	23.29	20.02	16.97	29.10	0.55	0.17	0.43	1.48	1.46	0.62	0.69	100.00

VNE 522 & 544 ECR Long Beach NY Shore Landing Climatological Wind Rose for April: 1979 - 2015



Joint Frequency Distribution Table

	N	NNE	NE	ENE	E	ESE	SE	SSE	S	SSW	SW	WSW	W	WNW	NW	NNW	Total
calm	0.04	0.05	0.05	0.04	0.02	0.02	0.04	0.05	0.02	0.02	0.04	0.02	0.04	0.05	0.01	0.01	0.51
0 - 5 kts	0.74	0.67	0.57	0.60	0.61	0.61	0.63	0.77	0.67	0.74	0.87	0.75	0.84	0.82	0.80	0.55	11.22
5 - 10 kts	2.17	1.36	1.76	1.58	1.50	1.92	1.77	2.02	2.76	2.93	2.83	2.93	2.28	3.37	3.17	2.80	37.14
10 - 15 kts	1.75	1.32	2.11	1.58	1.71	1.57	1.08	1.09	1.96	3.78	2.57	1.98	2.45	3.67	3.31	2.28	34.23
15 - 20 kts	0.54	0.35	0.69	1.02	0.99	0.36	0.26	0.38	0.92	1.84	0.64	0.42	0.90	1.54	1.39	0.86	13.09
20 - 25 kts	0.10	0.11	0.20	0.40	0.37	0.23	0.14	0.18	0.27	0.45	0.05	0.01	0.14	0.17	0.26	0.14	3.23
25 - 30 kts	0.04	0.02	0.01	0.04	0.06	0.08	0.04	•	0.04	0.05	•	•	0.02	0.01	0.07	•	0.48
30 - 35 kts	0.04	0.01	•	0.01	0.01	0.01	0.01	•	0.01	•	•	•	•	•	•	•	0.11
35 - 40 kts	•	•	•	•	•	•	•	•	•	•	•	•	•	•	•	•	•
40 - 45 kts	•	•	•	•	•	•	•	•	•	•	•	•	•	•	•	•	•
45 - 50 kts	•	•	•	•	•	•	•	•	•	•	•	•	•	•	•	•	•
Total	5.39	3.88	5.39	5.27	5.27	4.80	3.97	4.50	6.65	9.82	7.00	6.10	6.69	9.62	9.01	6.64	100.00