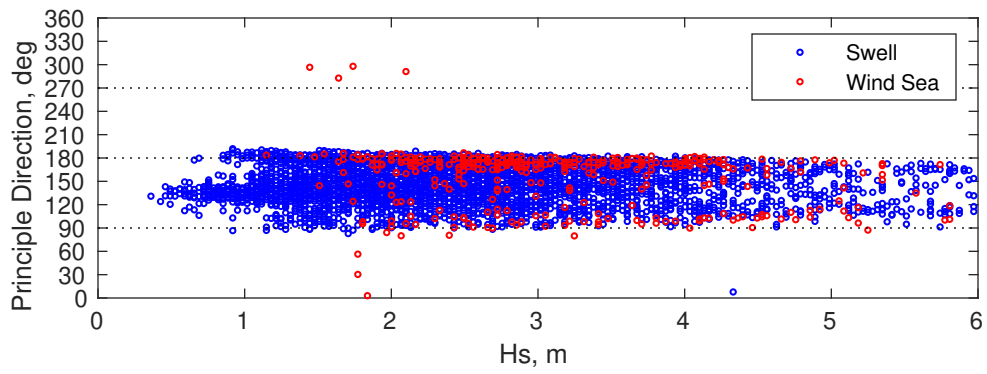
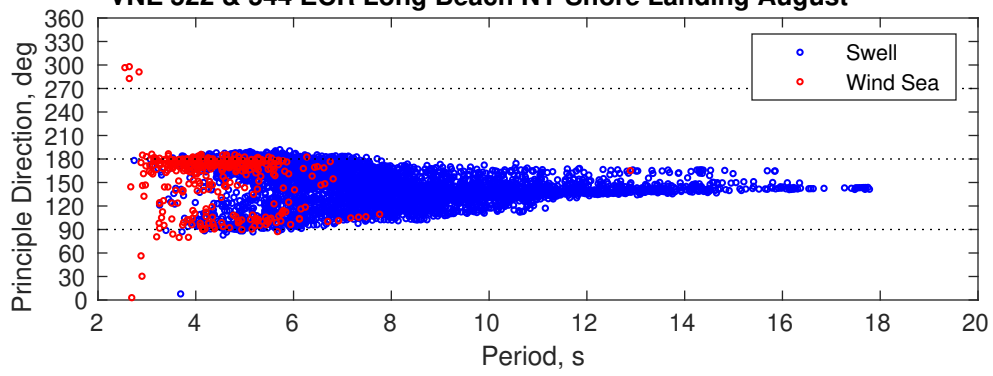
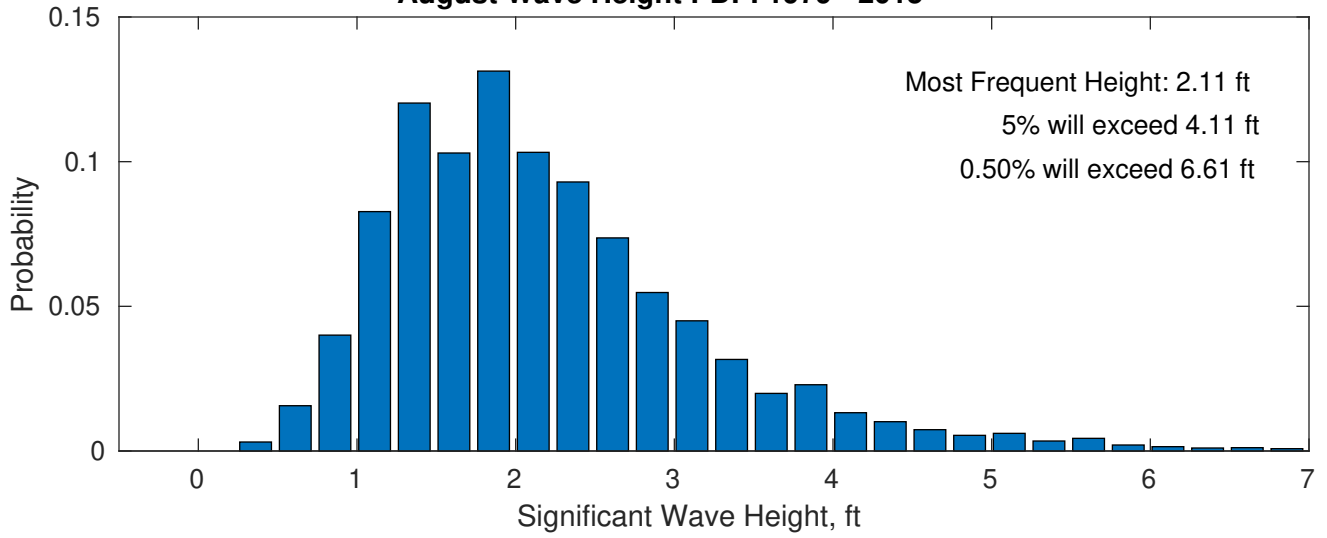


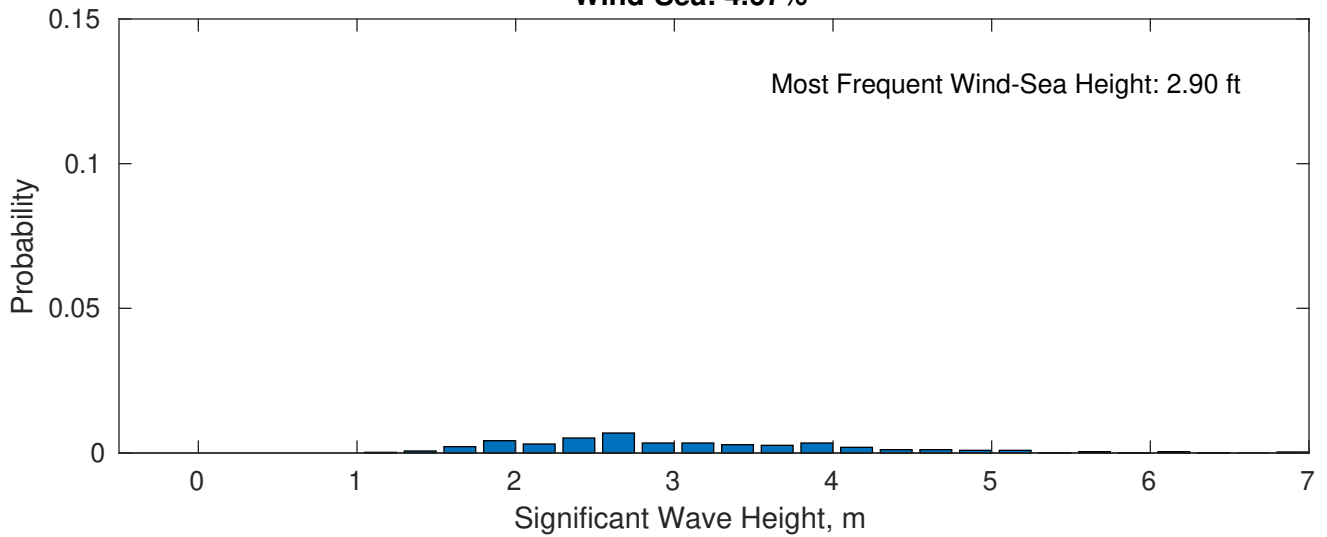
VNE 522 & 544 ECR Long Beach NY Shore Landing August



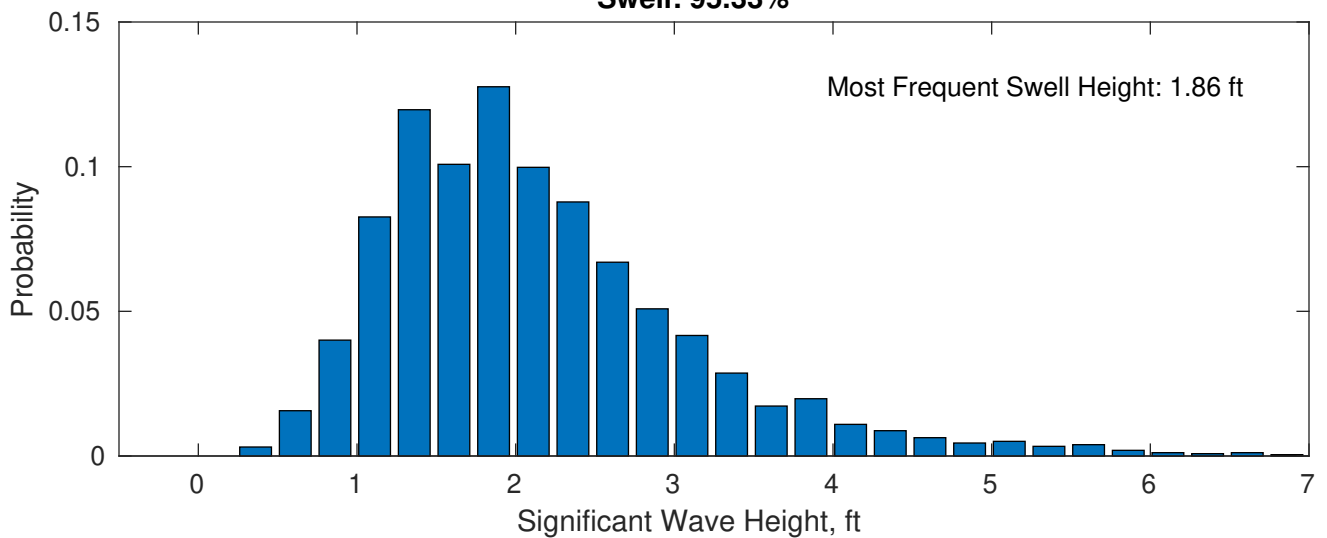
August Wave Height PDF: 1979 - 2015



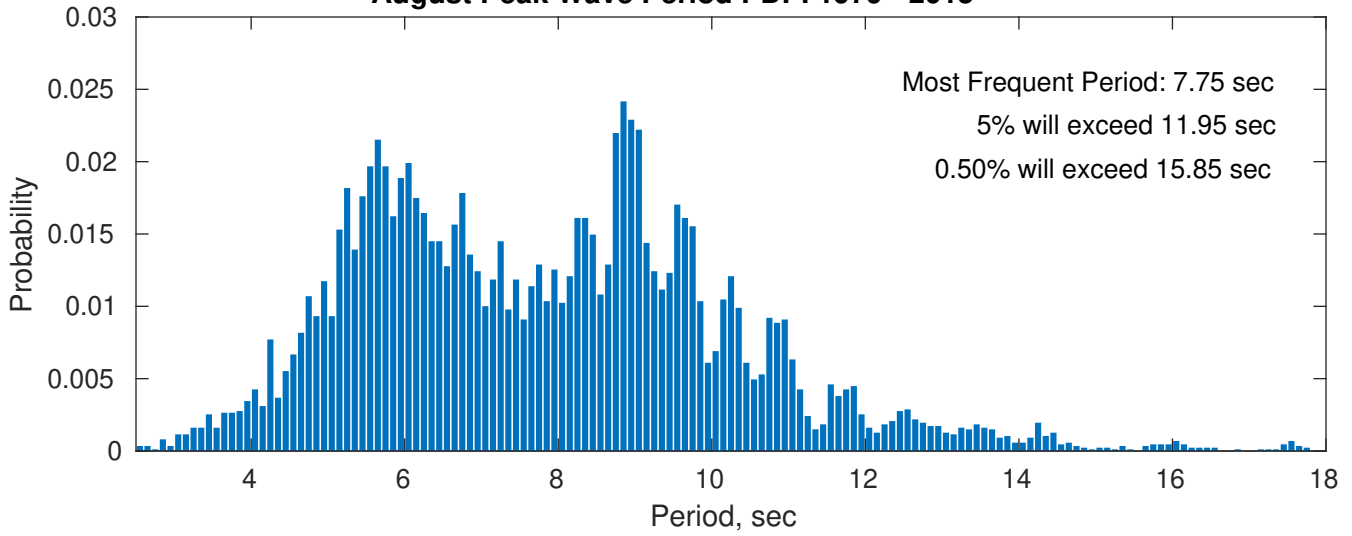
Wind-Sea: 4.67%



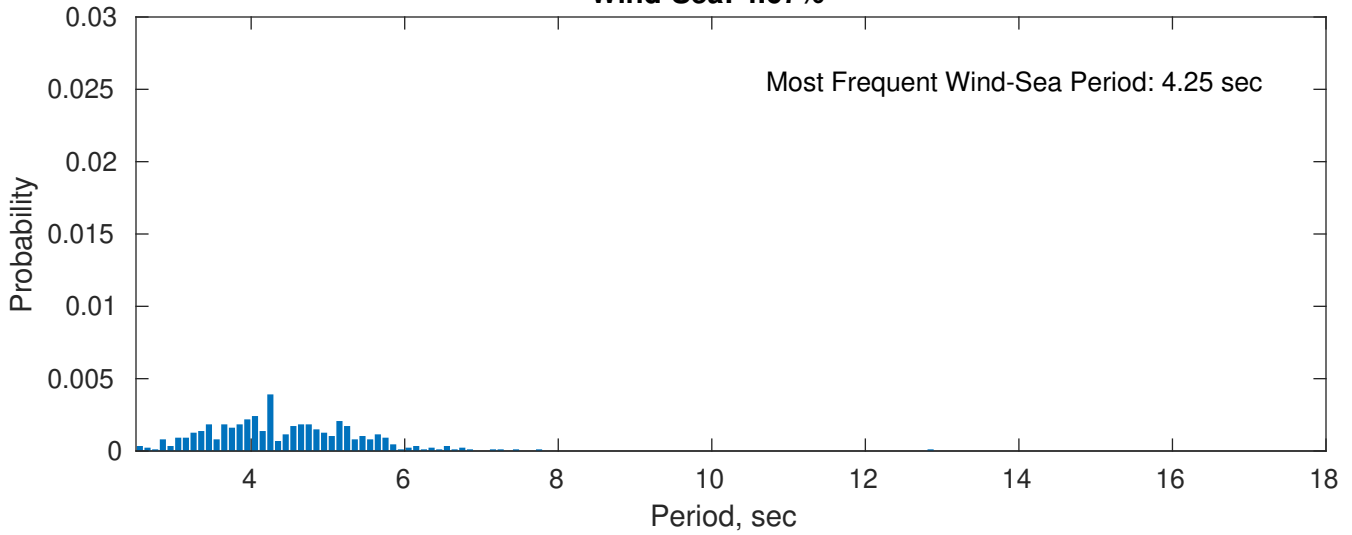
Swell: 95.33%



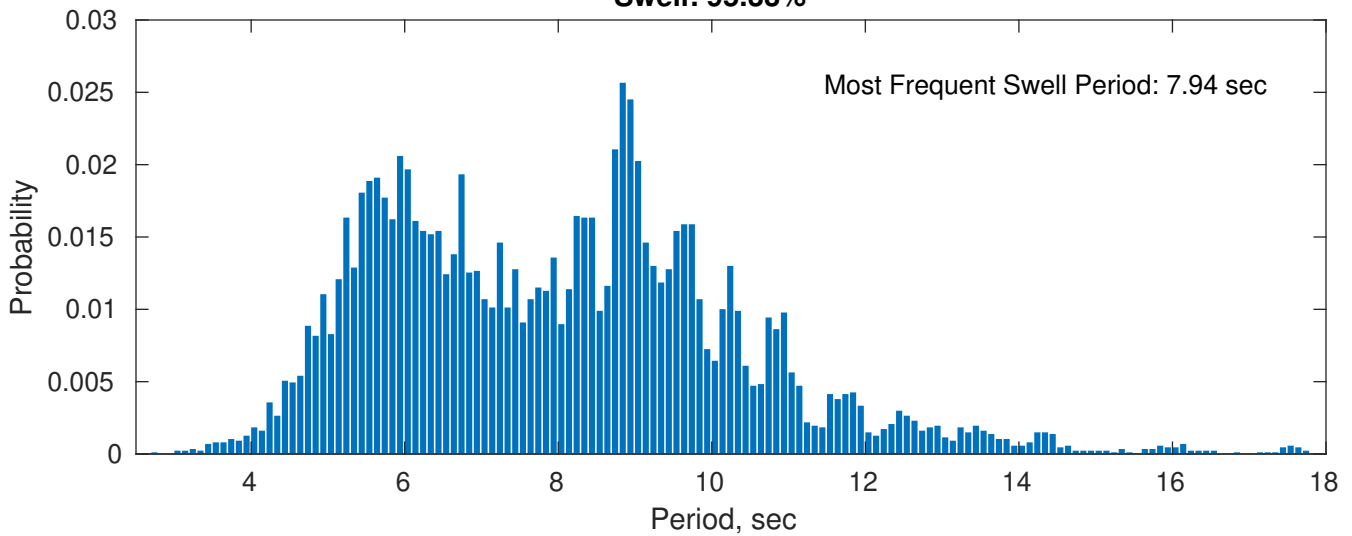
August Peak Wave Period PDF: 1979 - 2015



Wind-Sea: 4.67%

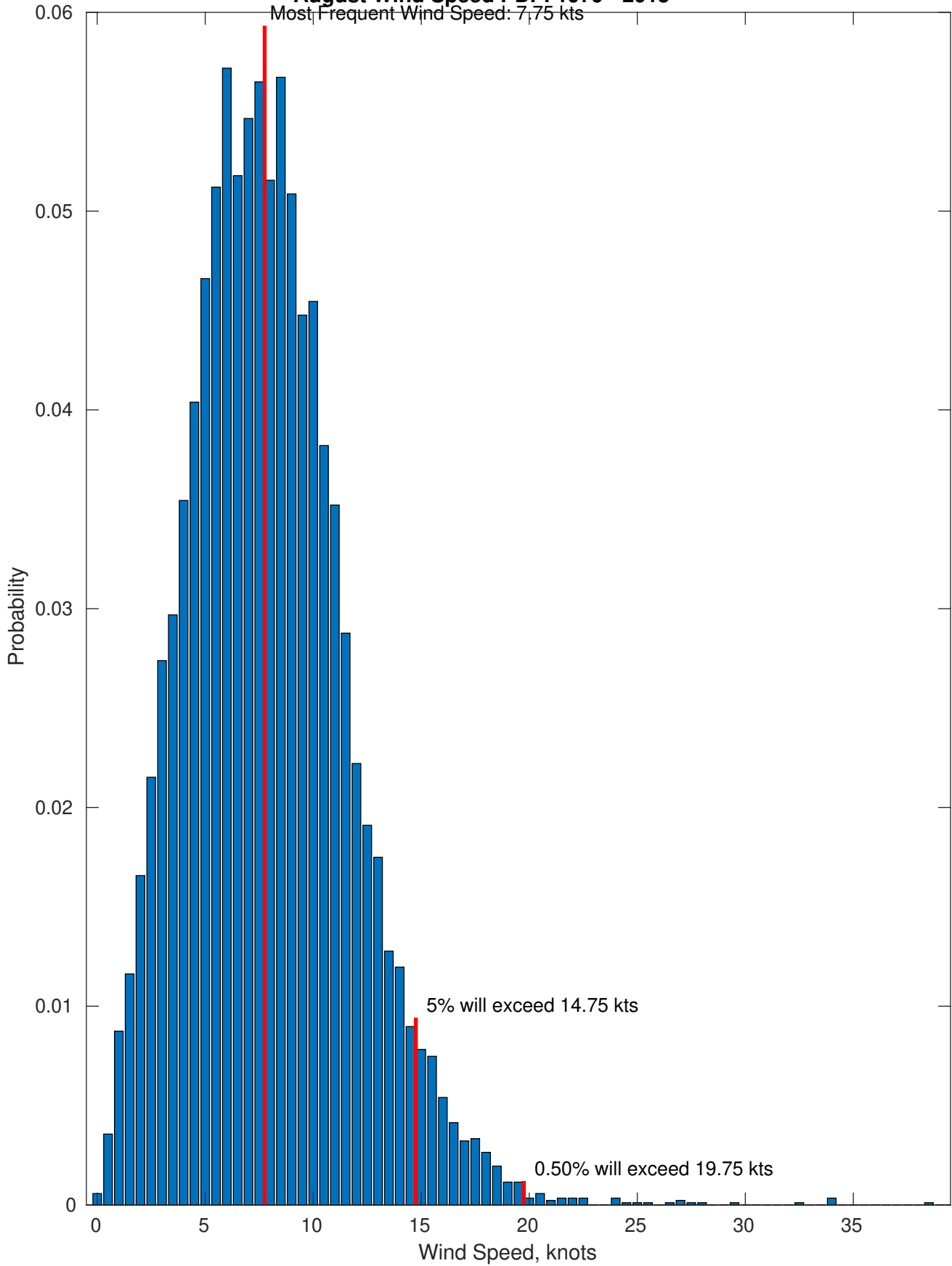


Swell: 95.33%

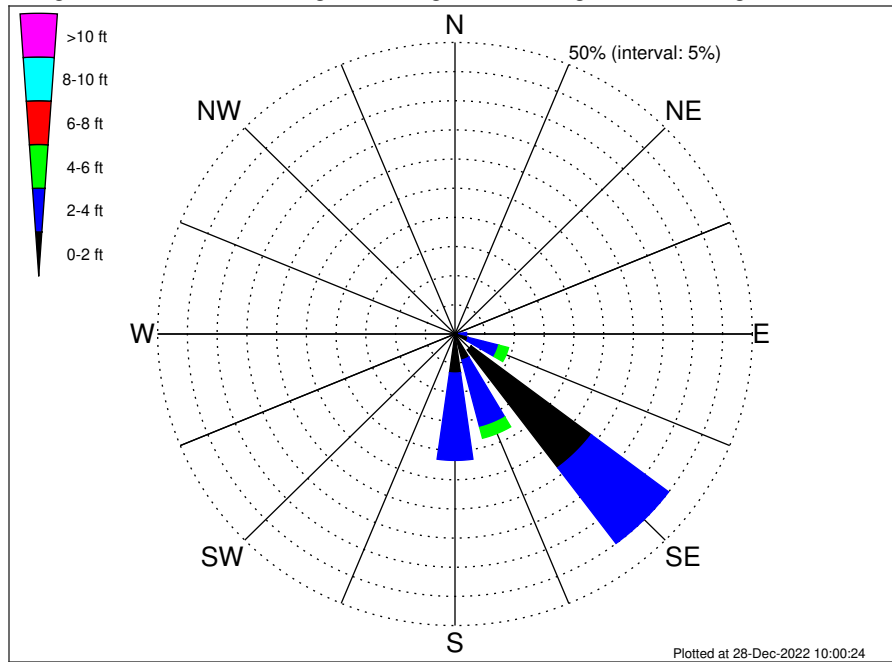


August Wind Speed PDF: 1979 - 2015

Most Frequent Wind Speed: 7.75 kts



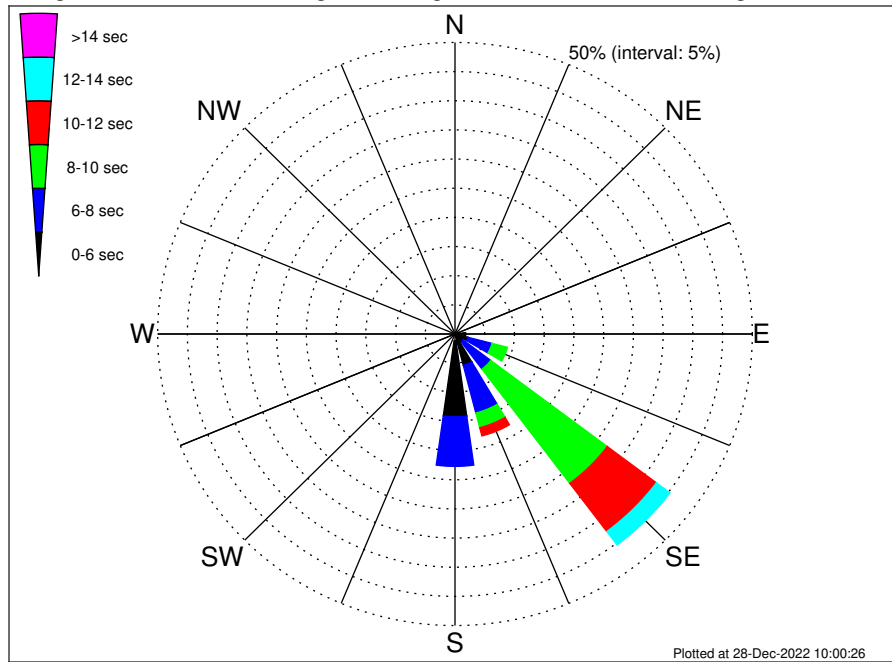
VNE 522 & 544 ECR Long Beach NY Shore Landing Climatological WaveHeight Rose for August: 1979 - 2015



Joint Frequency Distribution Table

	N	NNE	NE	ENE	E	ESE	SE	SSE	S	SSW	SW	WSW	W	WNW	NW	NNW	Total
calm	•	•	•	•	0.01	0.17	3.41	0.12	0.21	0.01	•	•	•	•	•	•	3.92
1 - 2 ft	0.01	0.01	•	0.01	0.68	2.12	25.30	4.49	6.49	•	•	•	•	•	0.03	•	39.15
2 - 4 ft	•	•	•	•	1.28	5.30	16.27	11.94	14.98	•	•	•	•	•	0.01	•	49.79
4 - 6 ft	0.01	•	•	•	0.22	1.71	1.22	1.92	1.21	•	•	•	•	•	•	•	6.29
6 - 8 ft	•	•	•	•	•	0.13	0.10	0.36	0.05	•	•	•	•	•	•	•	0.63
8 - 10 ft	•	•	•	•	•	•	0.03	0.12	•	•	•	•	•	•	•	•	0.15
10 - 12 ft	•	•	•	•	•	•	•	0.02	•	•	•	•	•	•	•	•	0.02
12 - 14 ft	•	•	•	•	•	•	•	0.01	•	•	•	•	•	•	•	•	0.01
14 - 16 ft	•	•	•	•	•	•	•	0.01	•	•	•	•	•	•	•	•	0.01
16 - 18 ft	•	•	•	•	•	•	•	0.01	•	•	•	•	•	•	•	•	0.01
> 18 ft	•	•	•	•	•	•	•	•	•	•	•	•	•	•	•	•	•
Total	0.02	0.01	•	0.01	2.19	9.44	46.34	19.00	22.93	0.01	•	•	•	0.05	•	•	100.00

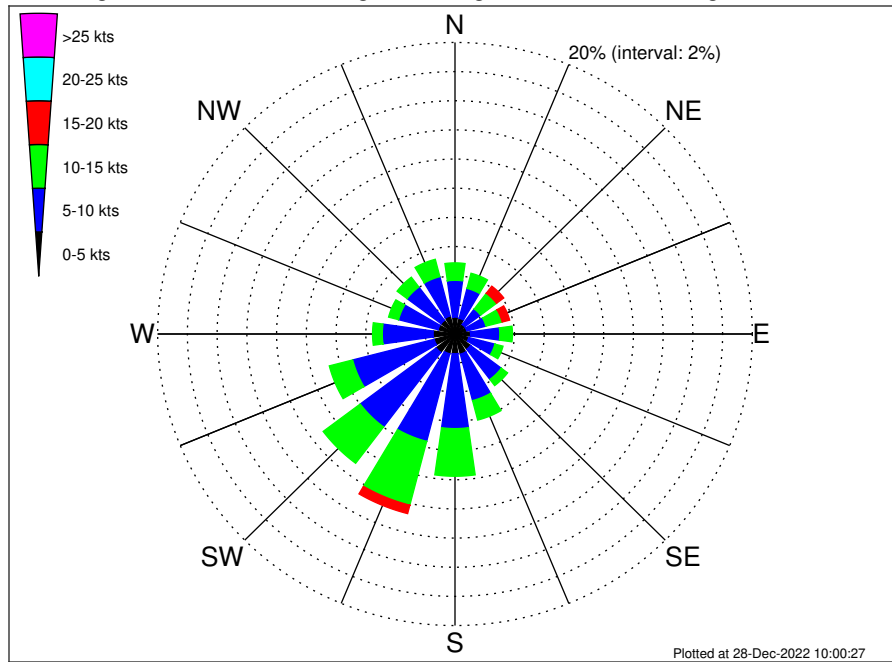
VNE 522 & 544 ECR Long Beach NY Shore Landing Climatological WavePeriod Rose for August: 1979 - 2015



Joint Frequency Distribution Table

	N	NNE	NE	ENE	E	ENE	SE	SSE	S	SSW	SW	WSW	W	WNW	NW	NNW	Total
calm
1 - 2 sec
2 - 4 sec	0.02	0.01	.	0.01	0.18	0.16	0.21	0.33	1.15	0.05	.	.	2.13
4 - 6 sec	1.62	2.08	1.50	5.20	13.05	0.01	23.46
6 - 8 sec	0.37	4.19	5.83	8.46	8.50	27.35
8 - 10 sec	0.01	2.67	24.53	2.60	0.21	30.02
10 - 12 sec	0.33	10.35	1.46	0.02	12.16
12 - 14 sec	2.87	0.53	3.39
14 - 16 sec	0.63	0.39	1.02
18 - 20 sec	0.43	0.02	0.45
22 - 24 sec
Total	0.02	0.01	.	0.01	2.19	9.44	46.34	19.00	22.93	0.01	.	.	.	0.05	.	.	100.00

VNE 522 & 544 ECR Long Beach NY Shore Landing Climatological Wind Rose for August: 1979 - 2015



Joint Frequency Distribution Table

	N	NNE	NE	ENE	E	ESE	SE	SSE	S	SSW	SW	WSW	W	WNW	NW	NNW	Total
calm	0.02	0.02	0.02	0.01	0.02	0.03	0.01	0.02	0.02	0.01	0.10	•	0.05	0.03	•	0.02	0.41
0 - 5 kts	1.14	1.09	0.79	0.81	1.02	0.92	1.30	1.40	1.33	1.39	1.48	1.45	1.43	1.14	1.17	1.25	19.14
5 - 10 kts	2.52	2.12	1.33	1.33	1.97	1.82	2.59	3.29	5.13	6.20	6.40	5.66	3.42	2.75	2.87	2.78	52.19
10 - 15 kts	1.20	1.07	1.35	1.13	0.85	0.56	0.53	1.38	3.27	4.52	3.12	1.62	0.66	0.69	0.84	1.23	24.02
15 - 20 kts	0.17	0.39	0.61	0.52	0.15	0.01	0.17	0.13	0.41	0.60	0.26	0.05	0.06	0.07	0.16	0.07	3.83
20 - 25 kts	0.02	0.07	0.02	0.03	0.02	0.01	0.02	•	0.02	0.01	•	0.01	•	0.01	•	•	0.26
25 - 30 kts	•	0.02	0.03	•	•	0.01	0.01	•	•	•	•	•	•	0.01	•	•	0.09
30 - 35 kts	•	•	•	•	•	0.01	0.01	•	•	•	0.01	•	•	•	•	0.01	0.05
35 - 40 kts	•	•	•	•	•	•	•	•	•	•	•	0.01	•	•	•	•	0.01
40 - 45 kts	•	•	•	•	•	•	•	•	•	•	•	•	•	•	•	•	•
45 - 50 kts	•	•	•	•	•	•	•	•	•	•	•	•	•	•	•	•	•
Total	5.07	4.79	4.17	3.83	4.04	3.38	4.65	6.23	10.20	12.74	11.38	8.80	5.60	4.71	5.04	5.37	100.00