

VNE 522 & 544 ECR Long Beach NY Shore Landing - May

Latitude: 40.56 N Longitude: 73.70 W

Weather Days

Wave Height > 4.0 ft Mean: 2.9 days Range: 0.8 - 5.0 days p50:3 days p75:2 days p90:1 days

Wave Height > 5.0 ft Mean: 1.0 days Range: 0.0 - 2.3 days p50:1 days p75:0.5 days p90:0.5 days

Wave Height > 6.0 ft Mean: 0.3 days Range: 0.0 - 0.8 days p50:0.5 days p75:0.5 days p90:0.5 days

Wind Speed > 20.0 knots Mean: 0.3 days Range: 0.0 - 0.7 days p50:0.5 days p75:0.5 days p90:0.5 days

Wind Speed > 25.0 knots Mean: 0.1 days Range: 0.0 - 0.2 days p50:0.5 days p75:0.5 days p90:0.5 days

Wind Speed > 30.0 knots Mean: 0.0 days Range: 0.0 - 0.0 days p50:0.5 days p75:0.5 days p90:0.5 days

Working Window Probability

Wave Height < 4.0 ft
3 days or longer: 67%
5 days or longer: 46%
7 days or longer: 35%

Wave Height < 5.0 ft
3 days or longer: 76%
5 days or longer: 69%
7 days or longer: 60%

Wave Height < 6.0 ft
3 days or longer: 86%
5 days or longer: 79%
7 days or longer: 76%

Waves

Mean Height: 2 - 4 ft

The wave heights will occasionally reach 6 - 8 ft, but rarely higher.

Mean Period: 6 - 8 sec

The wave periods will occasionally reach 14 - 16 sec, but rarely longer.

Principle Direction, from: S

WindSea/Swell: 10% / 90%

Winds

Mean Speed: 5 - 10 kts

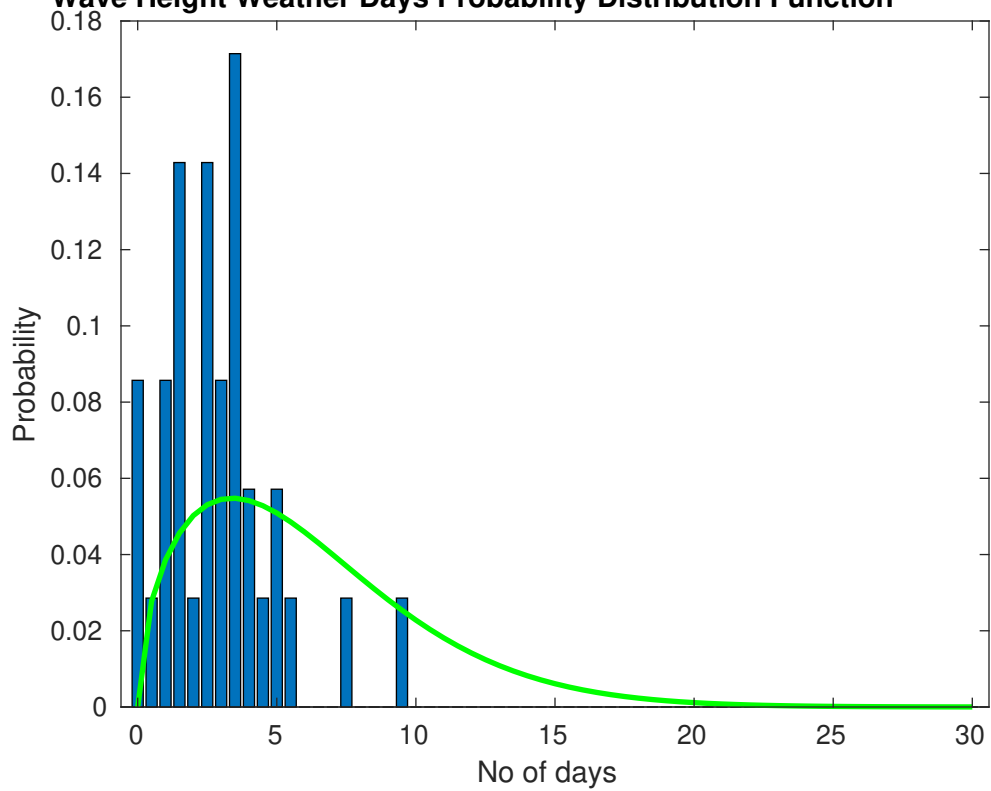
The winds will occasionally reach 20 - 25 kts, but rarely greater.

Principle Direction, from: SSW

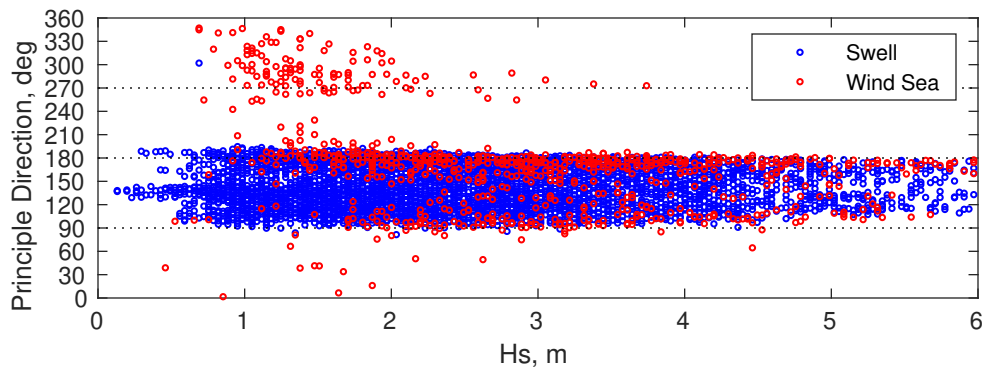
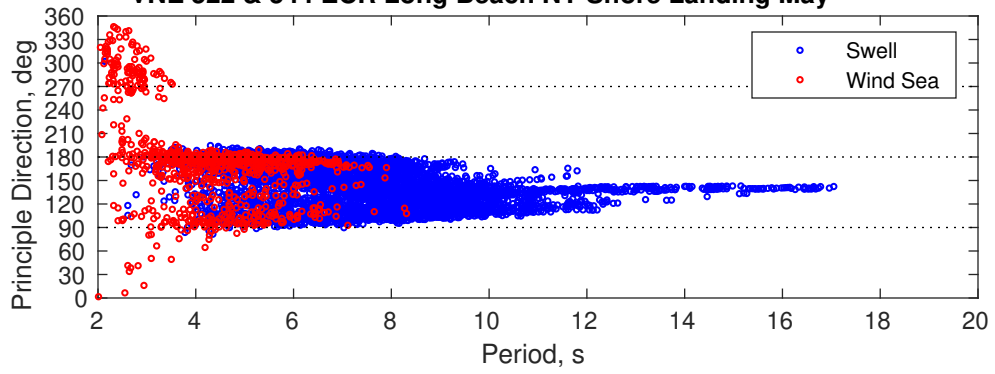
Severe Storms

Severe storms with gale force winds and extreme waves are not expected during this month.

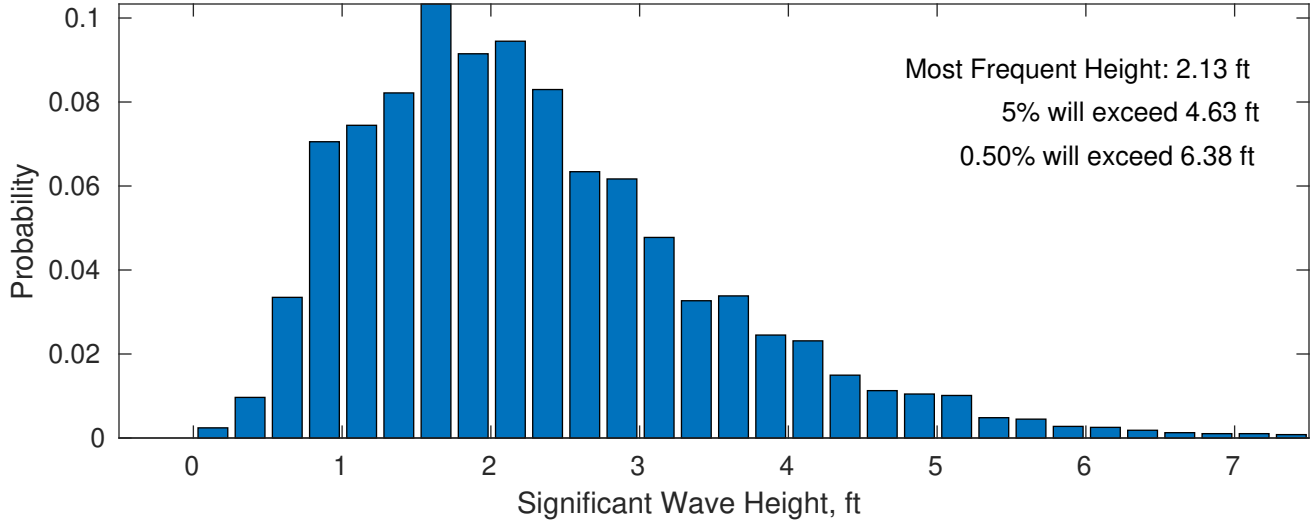
Wave Height Weather Days Probability Distribution Function



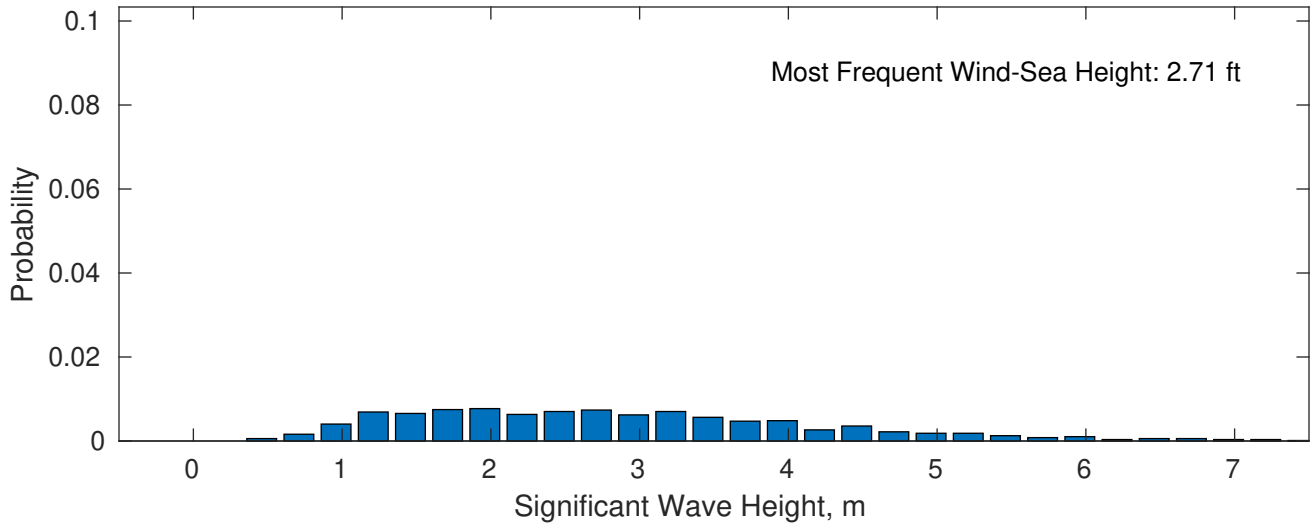
VNE 522 & 544 ECR Long Beach NY Shore Landing May



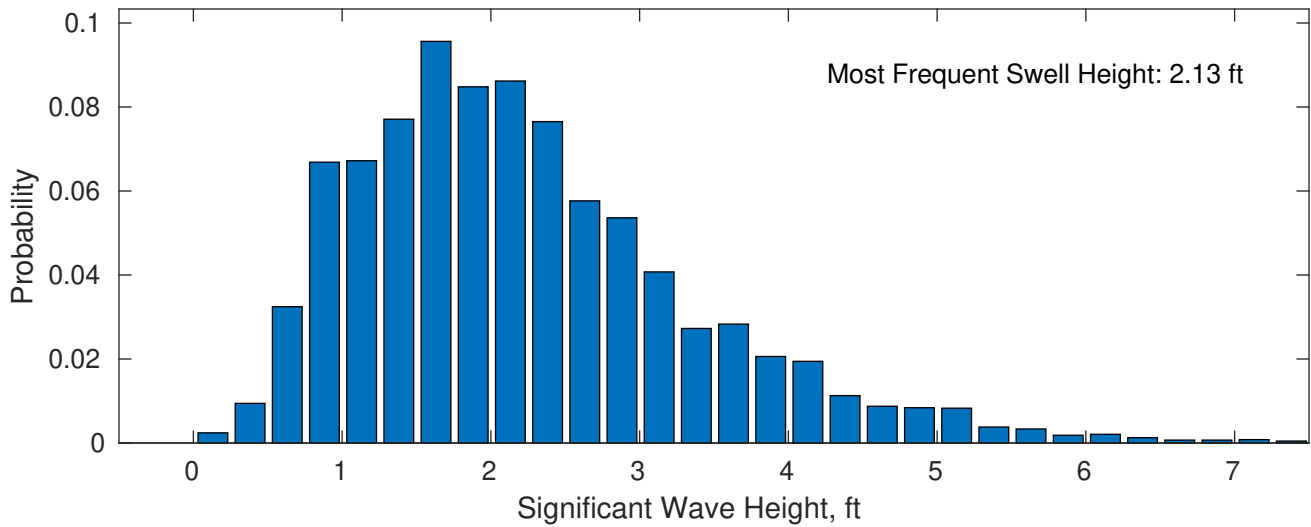
May Wave Height PDF: 1979 - 2015



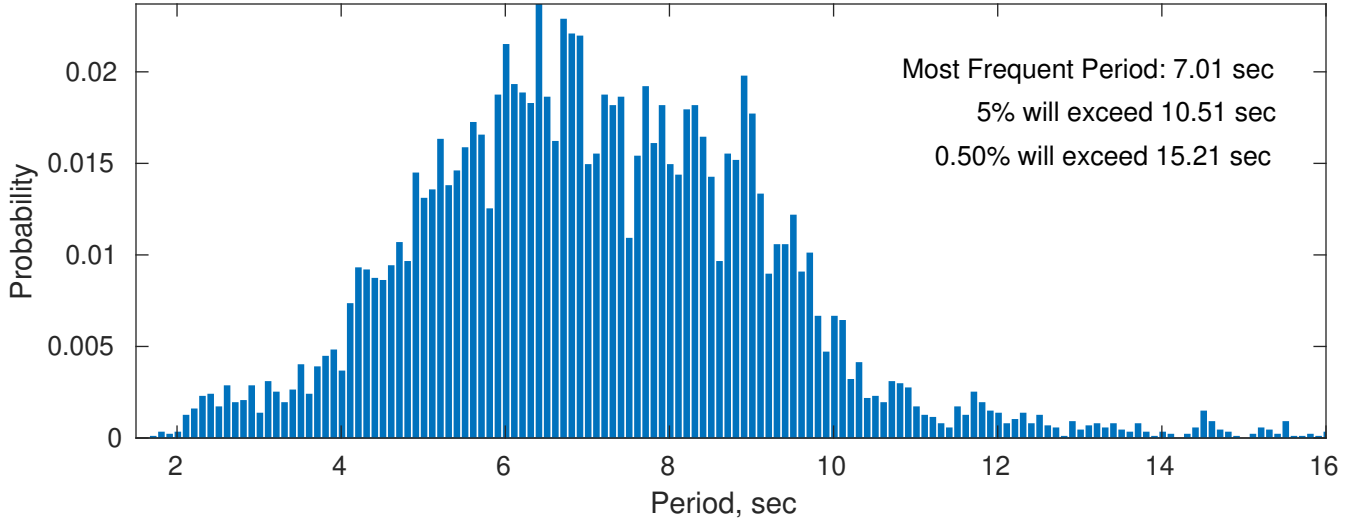
Wind-Sea: 10.16%



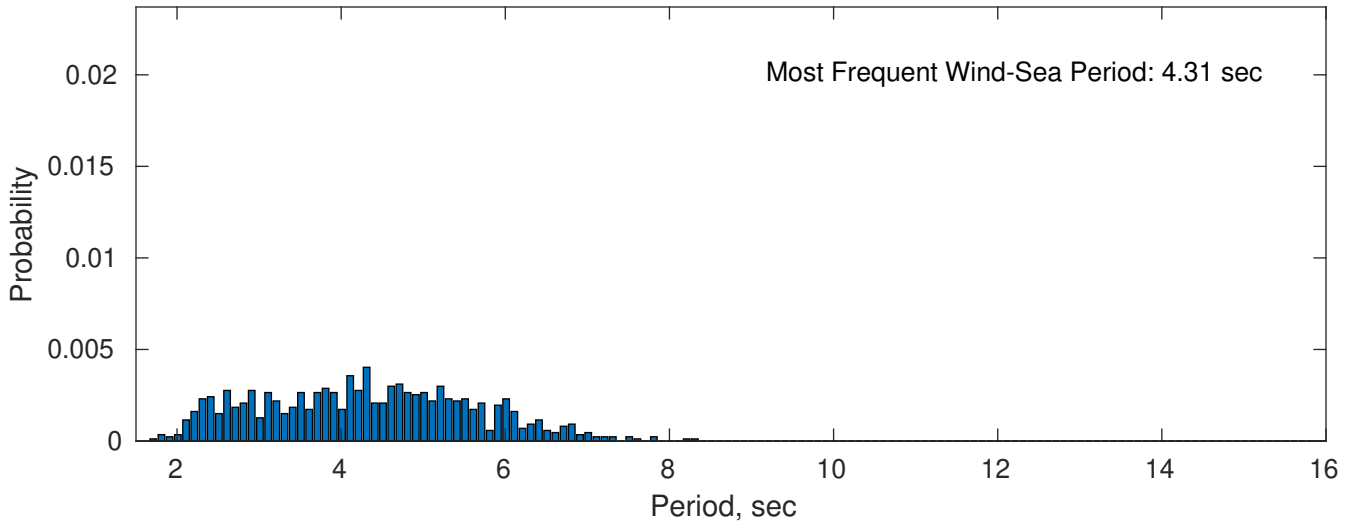
Swell: 89.84%



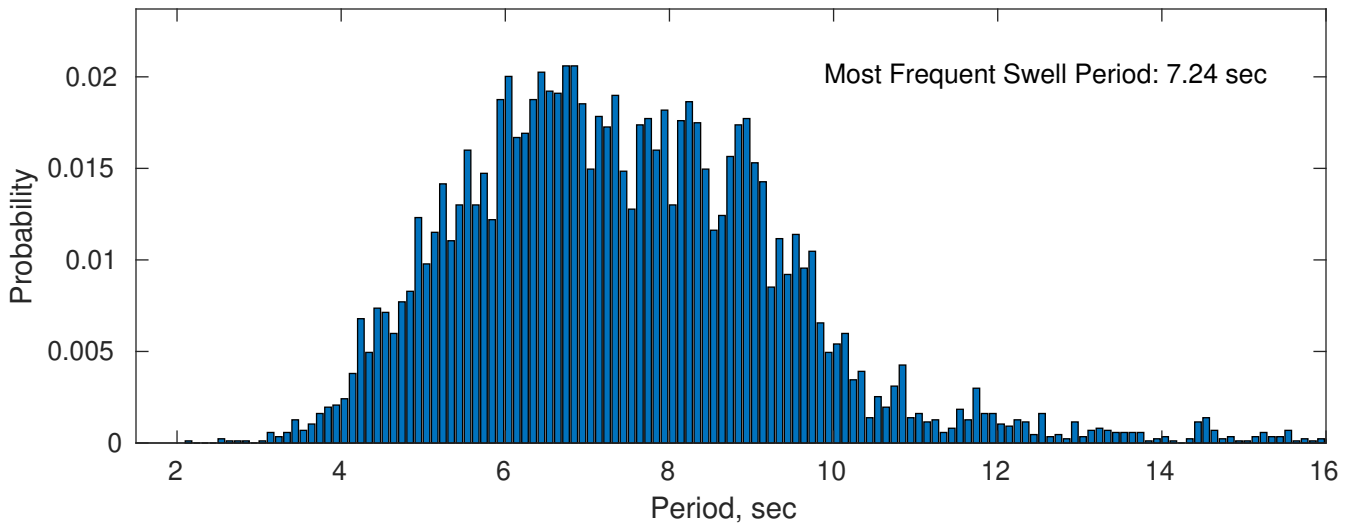
May Peak Wave Period PDF: 1979 - 2015



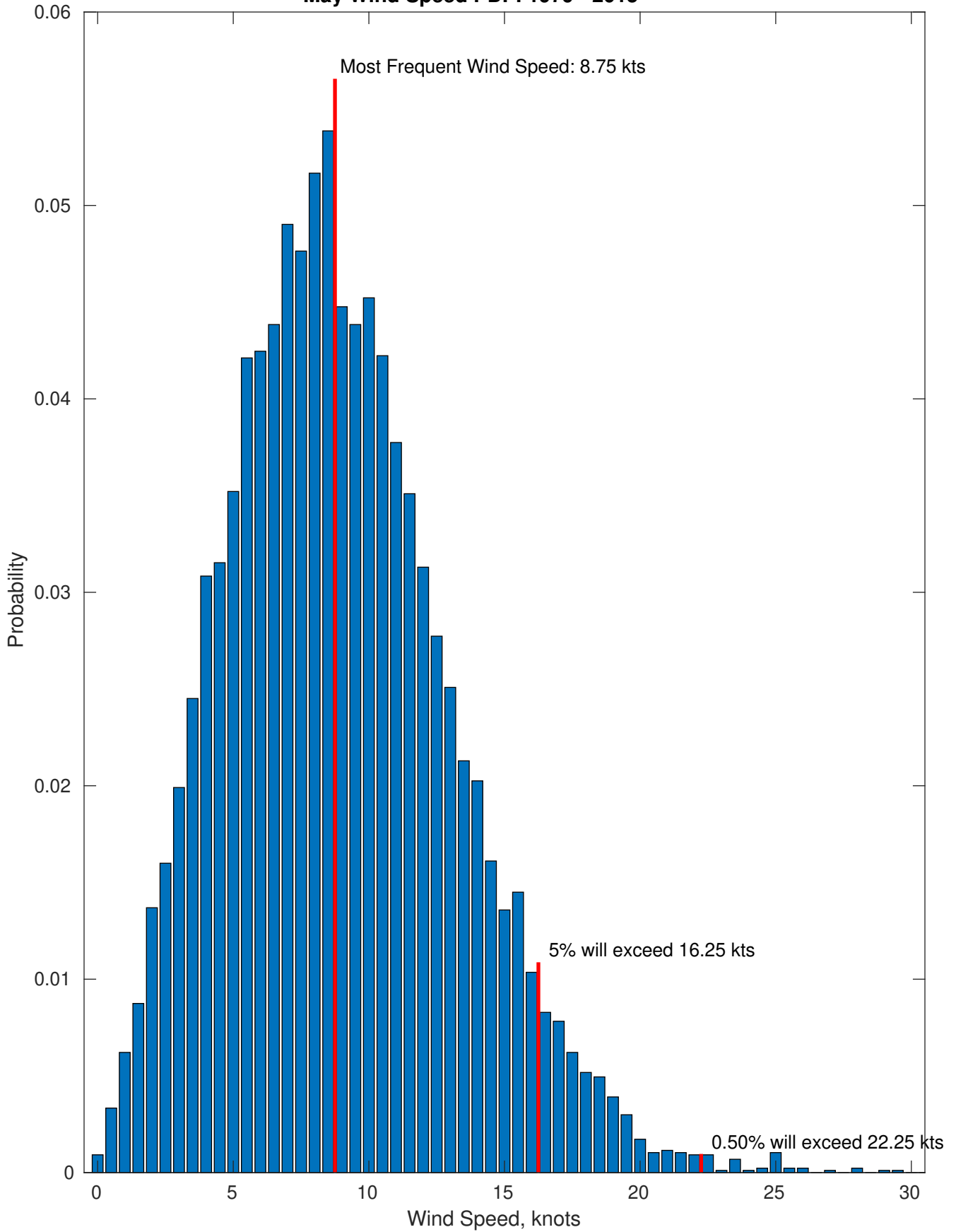
Wind-Sea: 10.16%



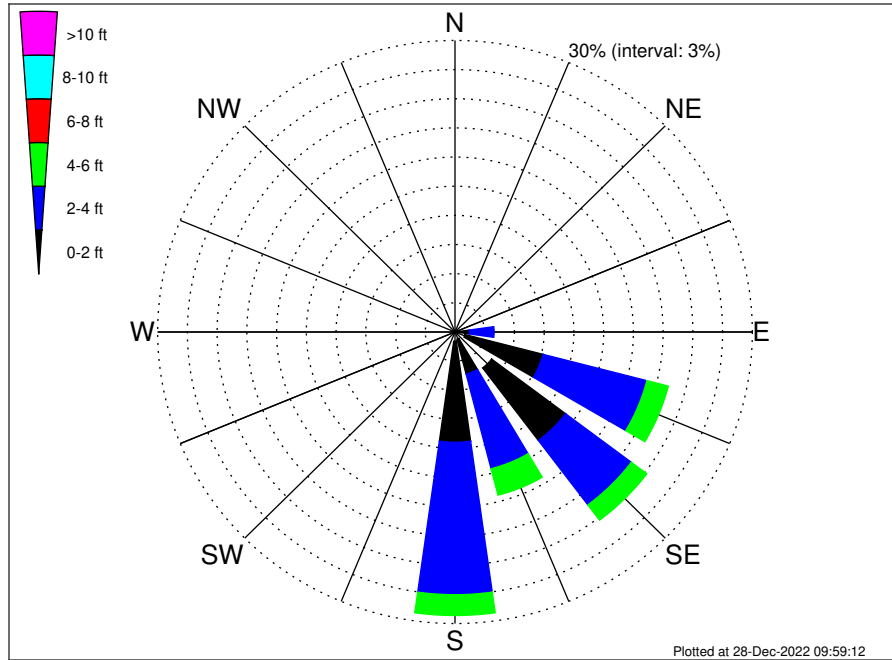
Swell: 89.84%



May Wind Speed PDF: 1979 - 2015



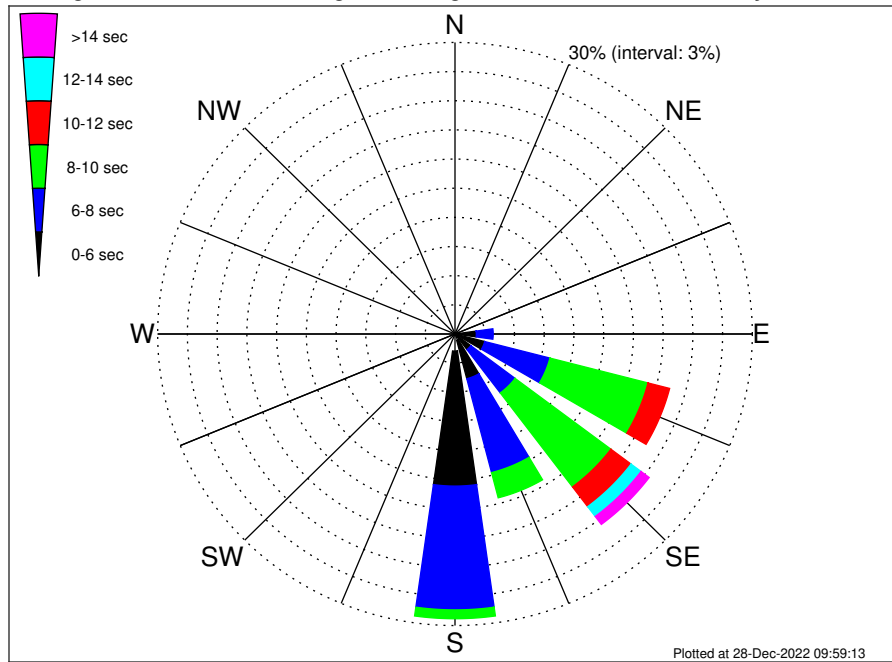
VNE 522 & 544 ECR Long Beach NY Shore Landing Climatological WaveHeight Rose for May: 1979 - 2015



Joint Frequency Distribution Table

	N	NNE	NE	ENE	E	ESE	SE	SSE	S	SSW	SW	WSW	W	WNW	NW	NNW	Total
calm	0.01	•	0.01	•	0.21	1.05	4.63	0.76	0.96	0.06	•	0.02	•	0.05	0.02	0.06	7.83
1 - 2 ft	0.01	0.01	0.05	0.02	1.25	8.12	9.34	3.72	10.39	0.18	0.03	0.03	0.30	0.37	0.22	0.12	34.18
2 - 4 ft	•	•	0.02	0.01	2.49	10.83	8.31	10.06	15.68	0.06	•	0.02	0.10	0.05	0.01	•	47.64
4 - 6 ft	•	•	•	0.01	0.17	2.23	1.96	2.81	2.14	•	•	•	•	•	•	•	9.32
6 - 8 ft	•	•	•	•	•	0.31	0.28	0.30	0.13	•	•	•	•	•	•	•	1.01
8 - 10 ft	•	•	•	•	•	•	0.02	•	•	•	•	•	•	•	•	•	0.02
10 - 12 ft	•	•	•	•	•	•	•	•	•	•	•	•	•	•	•	•	•
12 - 14 ft	•	•	•	•	•	•	•	•	•	•	•	•	•	•	•	•	•
14 - 16 ft	•	•	•	•	•	•	•	•	•	•	•	•	•	•	•	•	•
16 - 18 ft	•	•	•	•	•	•	•	•	•	•	•	•	•	•	•	•	•
> 18 ft	•	•	•	•	•	•	•	•	•	•	•	•	•	•	•	•	•
Total	0.02	0.01	0.08	0.05	4.12	22.54	24.53	17.64	29.30	0.30	0.03	0.08	0.40	0.46	0.25	0.17	100.00

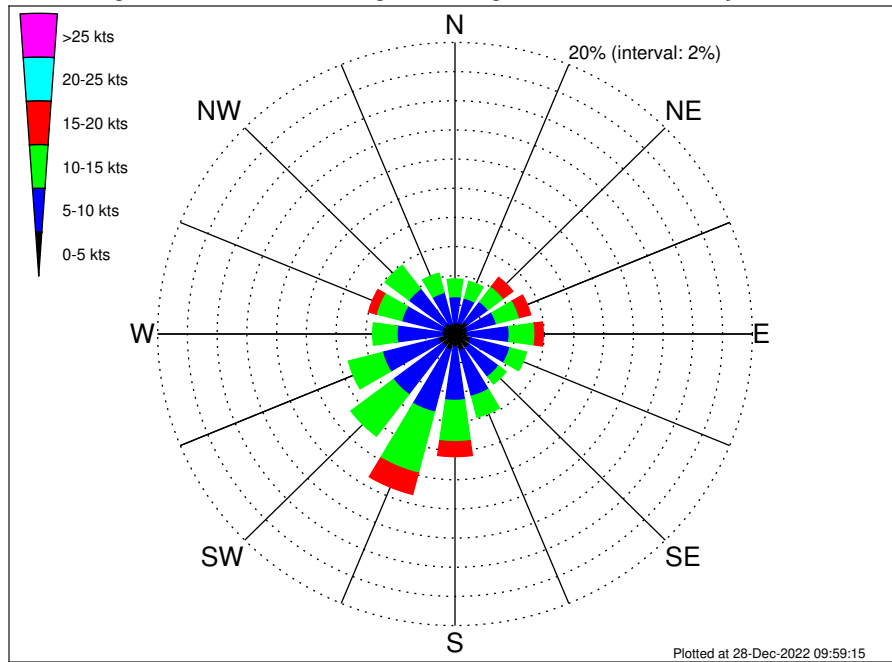
VNE 522 & 544 ECR Long Beach NY Shore Landing Climatological WavePeriod Rose for May: 1979 - 2015



Joint Frequency Distribution Table

	N	NNE	NE	ENE	E	ESE	SE	SSE	S	SSW	SW	WSW	W	WNW	NW	NNW	Total
calm
1 - 2 sec	.	.	0.01	0.01	.	.	.	0.03	0.06
2 - 4 sec	0.02	0.01	0.07	0.02	0.33	0.32	0.20	0.67	1.76	0.23	0.03	0.07	0.40	0.46	0.25	0.14	4.99
4 - 6 sec	.	.	.	0.02	1.82	2.77	1.81	4.09	13.89	0.07	24.46
6 - 8 sec	1.70	6.80	5.59	9.98	12.74	36.81
8 - 10 sec	0.26	10.22	12.11	2.68	0.91	26.18
10 - 12 sec	2.26	2.54	0.23	5.03
12 - 14 sec	0.17	1.27	1.44
14 - 16 sec	0.77	0.77
18 - 20 sec	0.25	0.25
22 - 24 sec
Total	0.02	0.01	0.08	0.05	4.12	22.54	24.53	17.64	29.30	0.30	0.03	0.08	0.40	0.46	0.25	0.17	100.00

VNE 522 & 544 ECR Long Beach NY Shore Landing Climatological Wind Rose for May: 1979 - 2015



Joint Frequency Distribution Table

	N	NNE	NE	ENE	E	ESE	SE	SSE	S	SSW	SW	WSW	W	WNW	NW	NNW	Total
calm	0.02	0.05	0.01	0.03	0.05	•	0.07	0.07	0.03	0.01	0.03	•	•	0.01	0.02	0.01	0.43
0 - 5 kts	0.76	0.77	1.06	0.83	0.79	1.10	1.12	1.12	0.86	1.15	1.00	1.20	0.89	0.89	0.86	0.75	15.14
5 - 10 kts	1.78	1.73	1.70	2.00	2.81	2.70	2.47	3.22	3.66	4.37	4.15	3.84	3.01	2.81	2.99	2.17	45.44
10 - 15 kts	1.21	1.19	1.30	1.61	1.74	1.15	0.63	1.48	2.83	4.33	3.58	2.37	1.63	1.77	2.01	1.37	30.21
15 - 20 kts	0.21	0.37	0.79	0.78	0.55	0.05	0.15	0.28	1.02	1.51	0.44	0.16	0.33	0.53	0.31	0.30	7.78
20 - 25 kts	0.01	0.10	0.18	0.10	0.06	•	0.01	0.06	0.10	0.06	•	0.01	0.03	0.05	•	0.01	0.79
25 - 30 kts	0.01	0.05	0.05	0.02	0.05	•	•	0.01	0.02	•	•	•	•	•	•	•	0.21
30 - 35 kts	•	•	•	•	•	•	•	•	•	•	•	•	•	•	•	•	•
35 - 40 kts	•	•	•	•	•	•	•	•	•	•	•	•	•	•	•	•	•
40 - 45 kts	•	•	•	•	•	•	•	•	•	•	•	•	•	•	•	•	•
45 - 50 kts	•	•	•	•	•	•	•	•	•	•	•	•	•	•	•	•	•
Total	4.00	4.25	5.10	5.39	6.04	5.01	4.45	6.24	8.54	11.43	9.21	7.58	5.90	6.05	6.20	4.61	100.00