

VNE 522 & 544 ECR Long Beach NY Shore Landing - November

Latitude: 40.56 N Longitude: 73.70 W

Weather Days

Wave Height > 4.0 ft Mean: 4.4 days Range: 2.3 - 6.5 days p50:4.5 days p75:4 days p90:2.5 days

Wave Height > 5.0 ft Mean: 2.4 days Range: 0.8 - 4.0 days p50:2.5 days p75:2 days p90:1.5 days

Wave Height > 6.0 ft Mean: 1.3 days Range: 0.2 - 2.5 days p50:1.5 days p75:1 days p90:0.5 days

Wind Speed > 20.0 knots Mean: 2.2 days Range: 1.1 - 3.3 days p50:2.5 days p75:1.5 days p90:1 days

Wind Speed > 25.0 knots Mean: 0.5 days Range: 0.0 - 0.9 days p50:0.5 days p75:0.5 days p90:0.5 days

Wind Speed > 30.0 knots Mean: 0.1 days Range: 0.0 - 0.2 days p50:0.5 days p75:0.5 days p90:0.5 days

Working Window Probability

Wave Height < 4.0 ft
3 days or longer: 69%
5 days or longer: 37%
7 days or longer: 23%

Wave Height < 5.0 ft
3 days or longer: 81%
5 days or longer: 57%
7 days or longer: 43%

Wave Height < 6.0 ft
3 days or longer: 82%
5 days or longer: 65%
7 days or longer: 53%

Waves

Mean Height: 2 - 4 ft

The wave heights will occasionally reach 8 - 10 ft, but rarely higher.

Mean Period: 6 - 8 sec

The wave periods will occasionally reach 14 - 16 sec, but rarely longer.

Principle Direction, from: SE

WindSea/Swell: 24% / 76%

Winds

Mean Speed: 10 - 15 kts

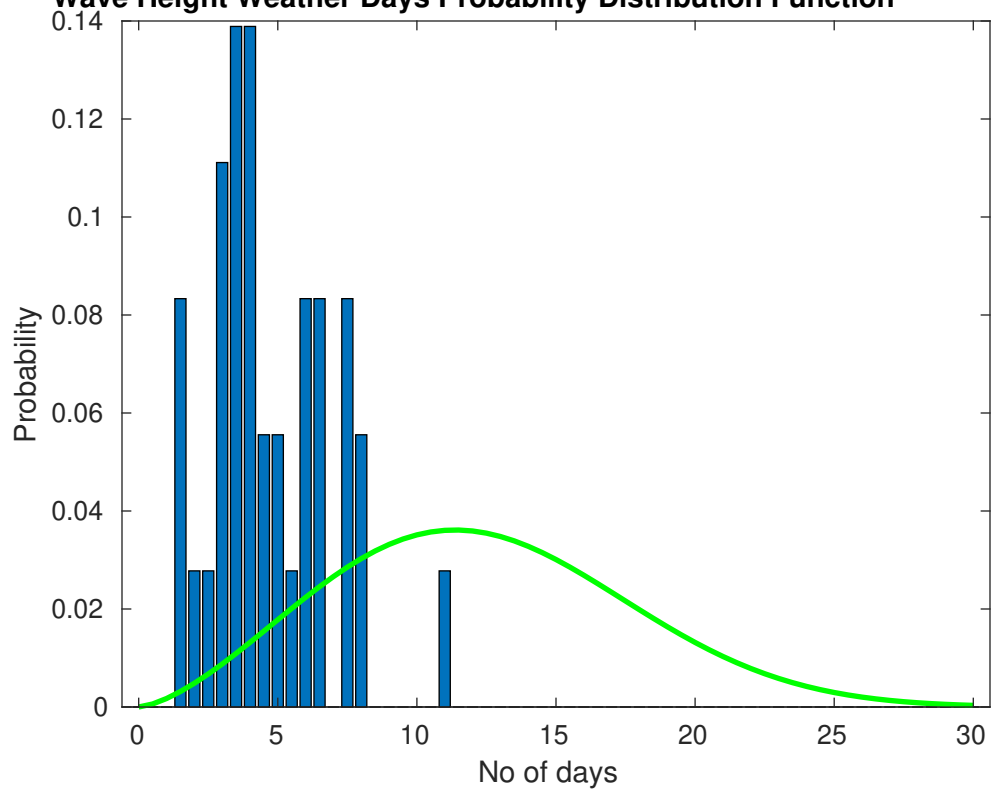
The winds will occasionally reach 25 - 30 kts, but rarely greater.

Principle Direction, from: WNW

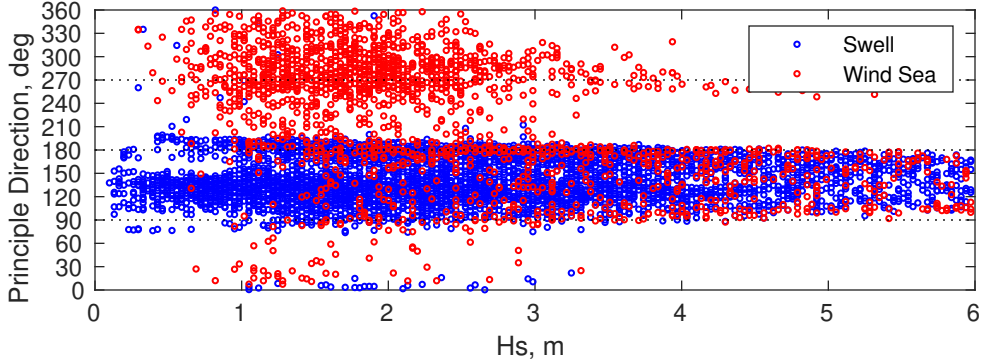
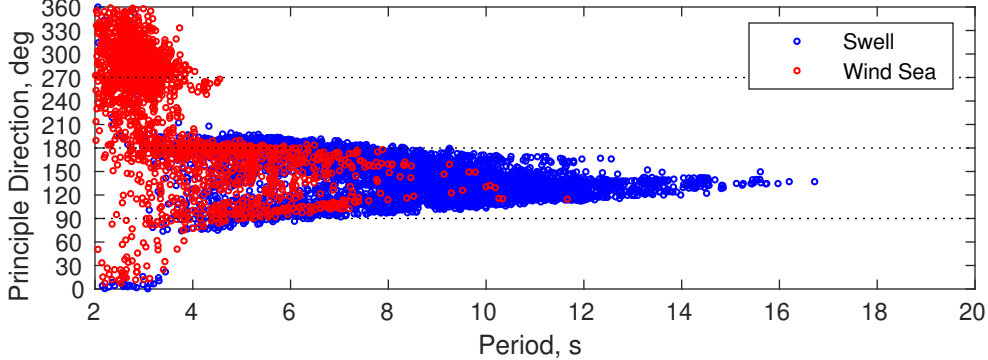
Severe Storms

Severe storms with gale force winds and extreme waves are not expected during this month.

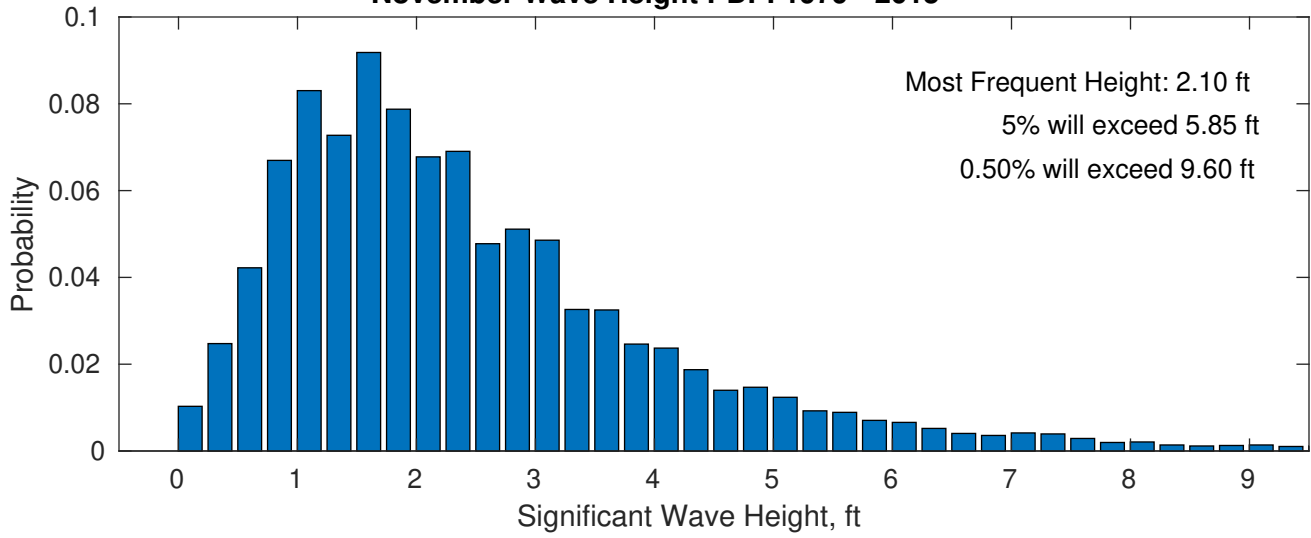
Wave Height Weather Days Probability Distribution Function



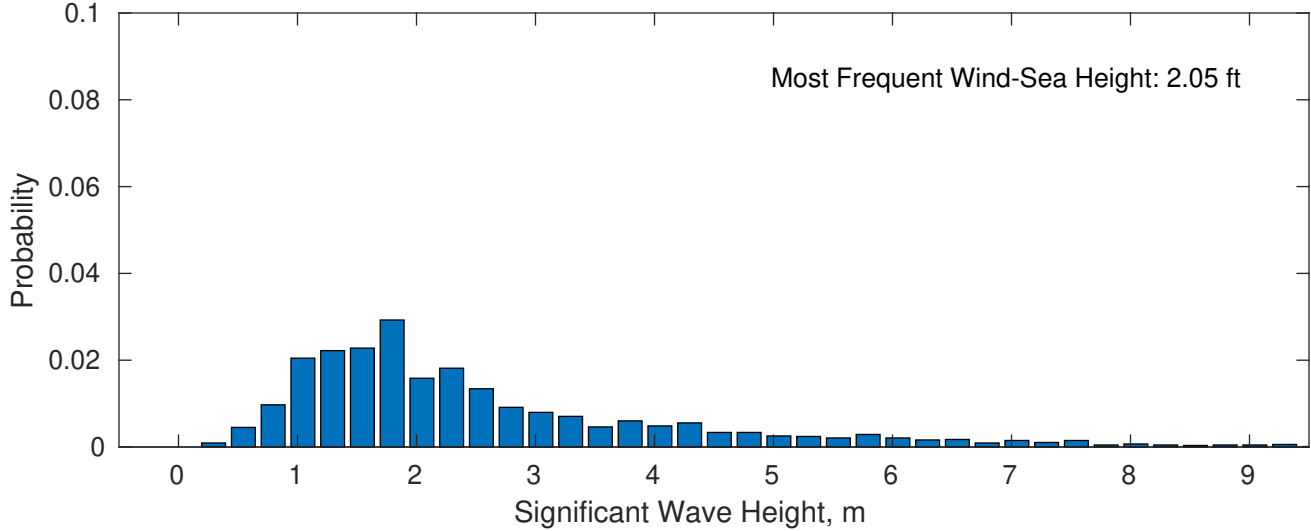
VNE 522 & 544 ECR Long Beach NY Shore Landing November



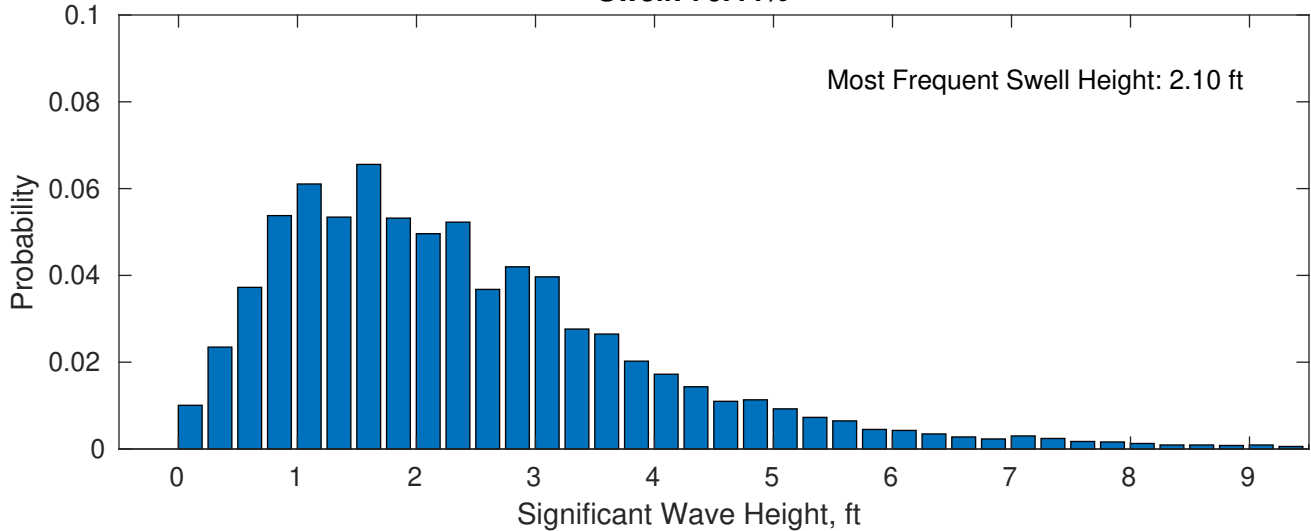
November Wave Height PDF: 1979 - 2015



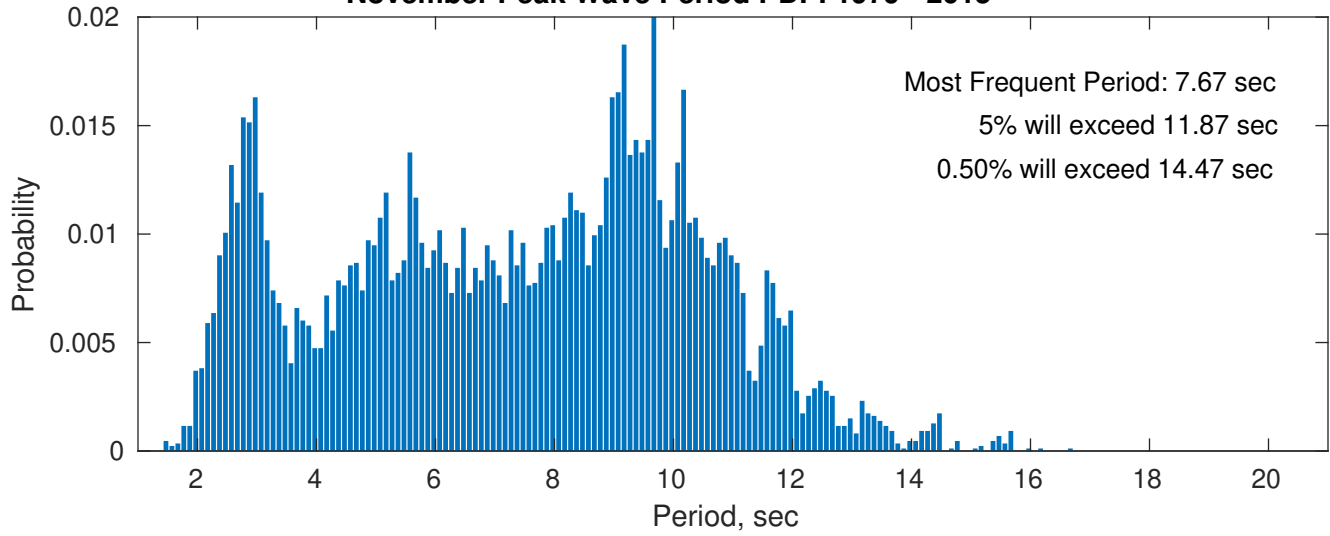
Wind-Sea: 23.56%



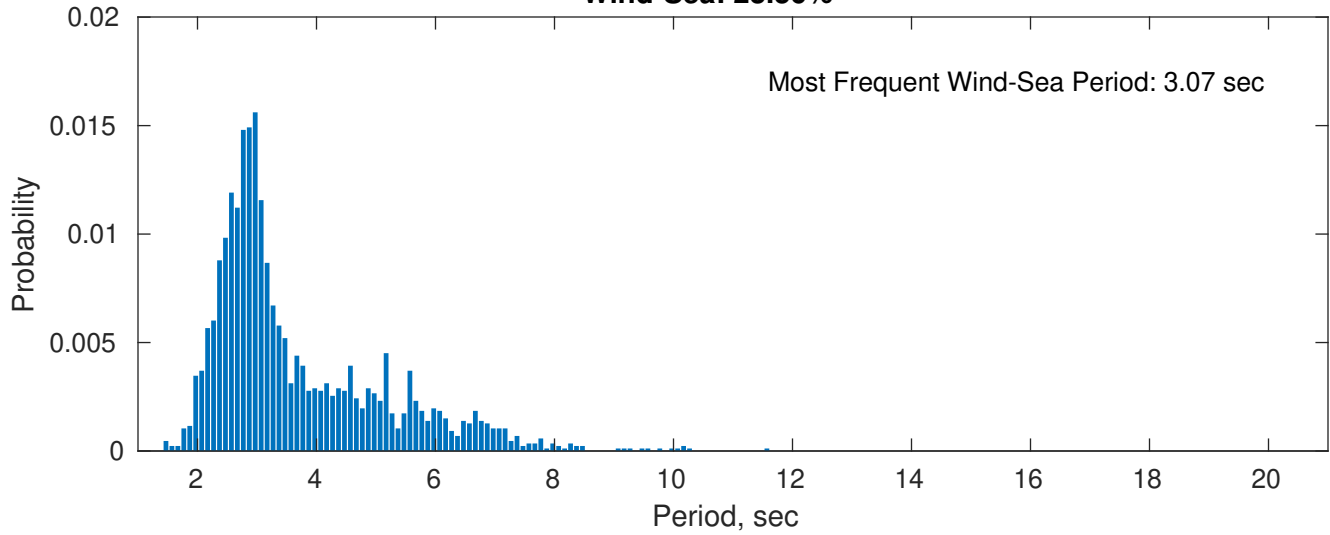
Swell: 76.44%



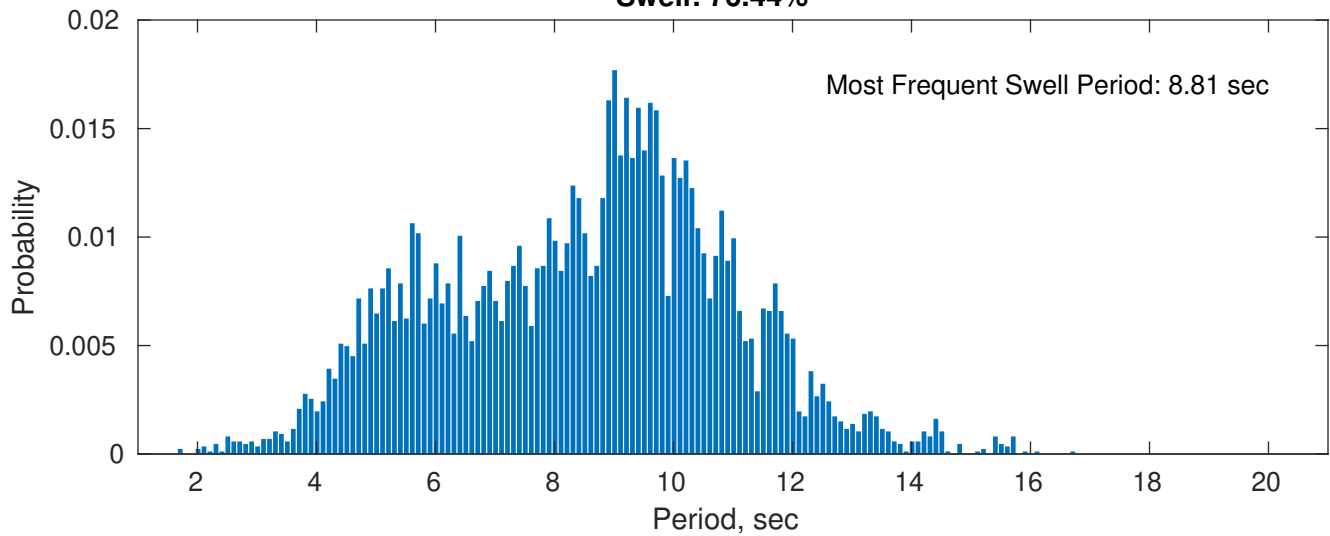
November Peak Wave Period PDF: 1979 - 2015



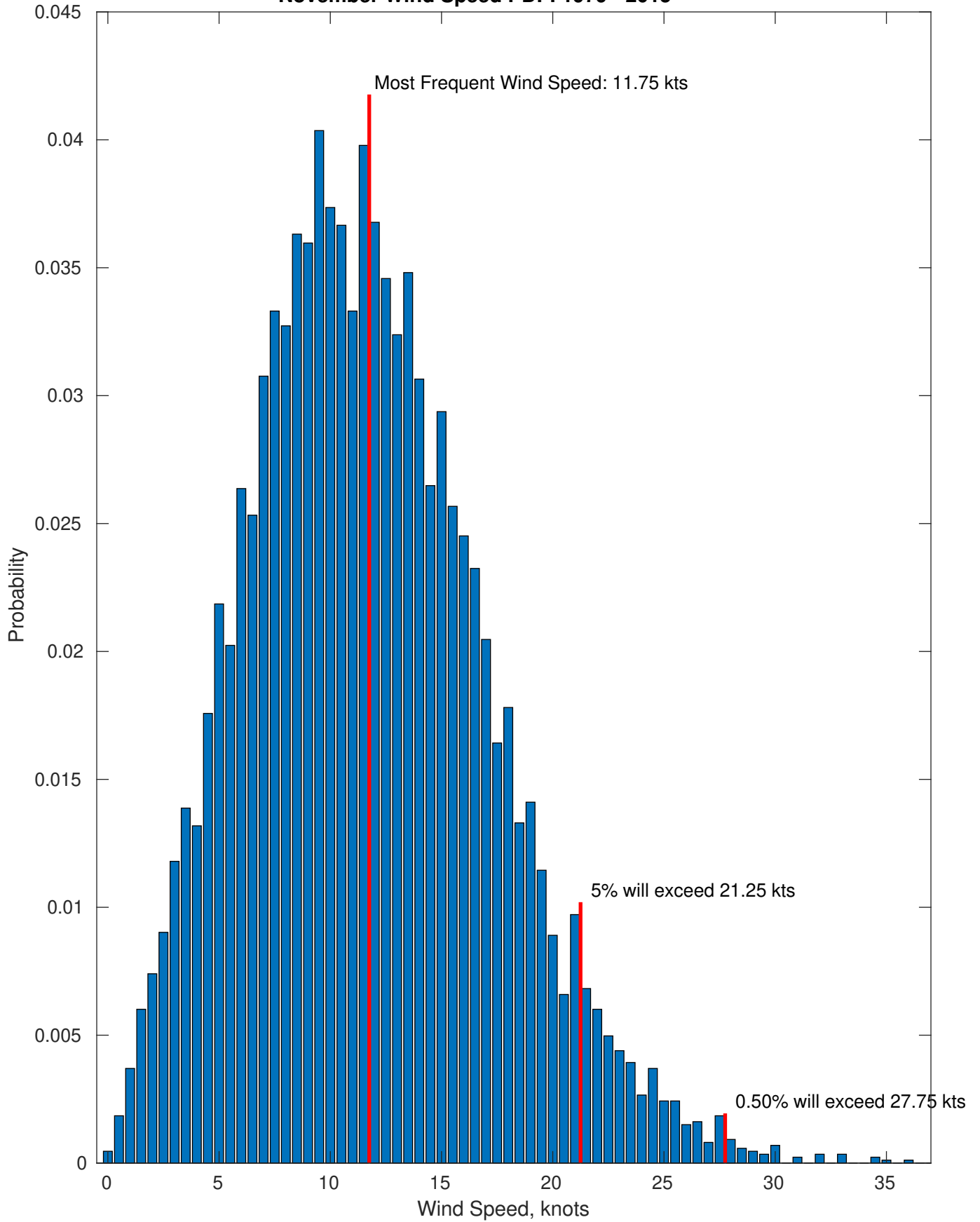
Wind-Sea: 23.56%



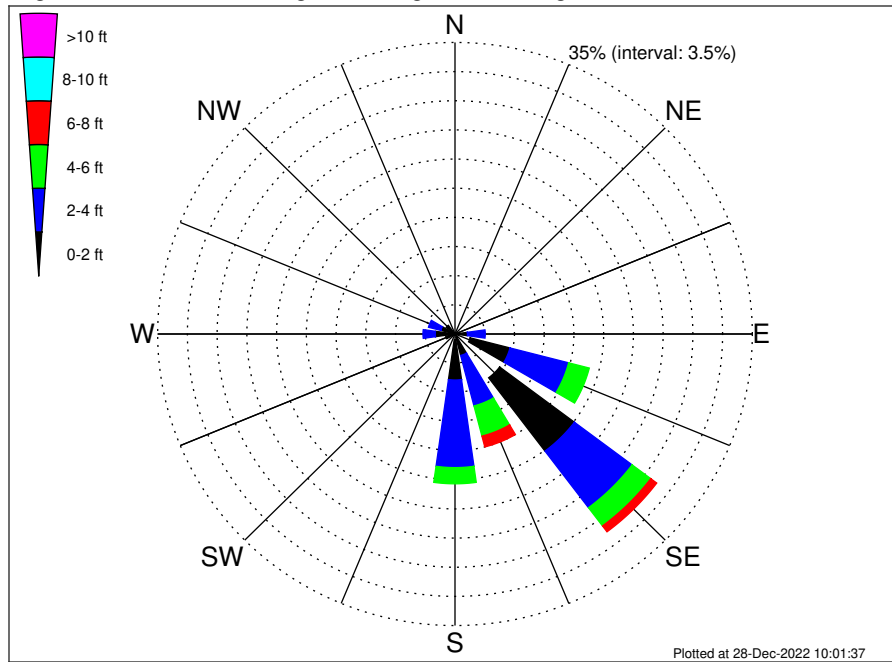
Swell: 76.44%



November Wind Speed PDF: 1979 - 2015



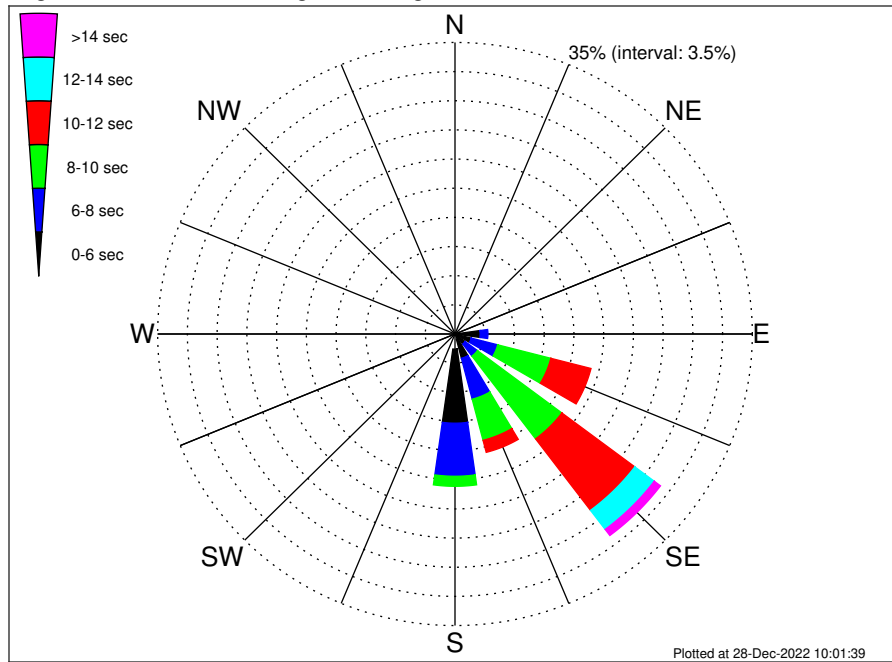
VNE 522 & 544 ECR Long Beach NY Shore Landing Climatological WaveHeight Rose for November: 1979 - 2015



Joint Frequency Distribution Table

	N	NNE	NE	ENE	E	ESE	SE	SSE	S	SSW	SW	WSW	W	WNW	NW	NNW	Total
calm	0.05	0.05	•	0.10	0.12	1.85	6.58	0.42	0.68	0.45	0.08	0.24	0.27	0.22	0.21	0.20	11.51
1 - 2 ft	0.42	0.17	0.07	0.10	1.35	4.83	11.02	2.24	4.85	0.68	0.38	0.88	2.06	1.50	1.10	0.71	32.37
2 - 4 ft	0.14	0.10	0.06	0.09	2.09	7.14	8.51	6.26	10.51	0.29	0.19	0.57	1.45	1.50	0.52	0.21	39.62
4 - 6 ft	•	•	•	•	0.49	2.51	2.74	3.75	1.94	•	•	0.08	0.08	•	•	0.01	11.60
6 - 8 ft	•	•	•	•	0.01	0.82	0.88	1.34	0.32	•	•	•	•	•	•	•	3.38
8 - 10 ft	•	•	•	•	•	0.08	0.40	0.54	0.07	•	•	•	•	•	•	•	1.10
10 - 12 ft	•	•	•	•	•	0.05	0.13	0.14	•	•	•	•	•	•	•	•	0.31
12 - 14 ft	•	•	•	•	•	0.01	0.02	0.07	•	•	•	•	•	•	•	•	0.10
14 - 16 ft	•	•	•	•	•	•	•	•	•	•	•	•	•	•	•	•	•
16 - 18 ft	•	•	•	•	•	•	•	0.01	•	•	•	•	•	•	•	•	0.01
> 18 ft	•	•	•	•	•	•	•	•	•	•	•	•	•	•	•	•	•
Total	0.60	0.32	0.13	0.30	4.06	17.29	30.29	14.77	18.38	1.42	0.65	1.77	3.85	3.23	1.83	1.12	100.00

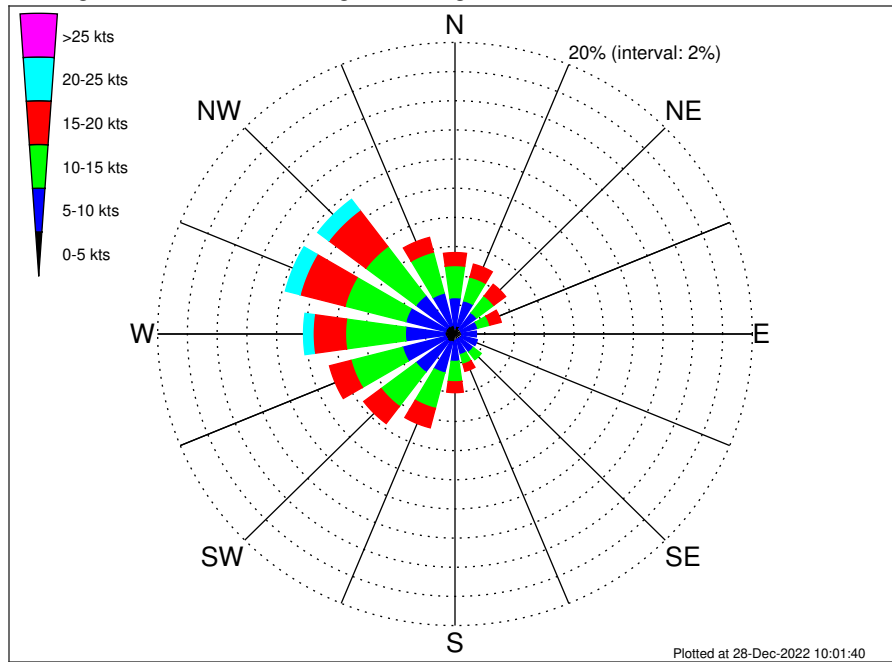
VNE 522 & 544 ECR Long Beach NY Shore Landing Climatological WavePeriod Rose for November: 1979 - 2015



Joint Frequency Distribution Table

	N	NNE	NE	ENE	E	ENE	SE	SSE	S	SSW	SW	WSW	W	WNW	NW	NNW	Total
calm	•	•	•	•	•	•	•	•	•	•	•	•	•	•	•	•	•
1 - 2 sec	•	0.02	•	•	•	•	0.01	0.02	•	0.03	0.01	0.06	0.07	0.05	0.07	0.09	0.44
2 - 4 sec	0.60	0.30	0.13	0.19	0.49	0.38	0.30	0.61	1.82	0.77	0.64	1.63	3.69	3.18	1.76	1.03	17.51
4 - 6 sec	•	•	•	0.12	2.47	1.60	1.19	2.37	8.89	0.60	•	0.08	0.09	•	•	•	17.42
6 - 8 sec	•	•	•	•	0.91	3.21	1.82	5.08	6.37	0.01	•	•	•	•	•	•	17.40
8 - 10 sec	•	•	•	•	0.19	6.46	12.44	5.10	1.20	•	•	•	•	•	•	•	25.40
10 - 12 sec	•	•	•	•	•	4.88	10.74	1.49	0.09	•	•	•	•	•	•	•	17.21
12 - 14 sec	•	•	•	•	•	0.74	2.87	0.08	•	•	•	•	•	•	•	•	3.69
14 - 16 sec	•	•	•	•	•	0.01	0.89	0.01	•	•	•	•	•	•	•	•	0.91
18 - 20 sec	•	•	•	•	•	•	0.02	•	•	•	•	•	•	•	•	•	0.02
22 - 24 sec	•	•	•	•	•	•	•	•	•	•	•	•	•	•	•	•	•
Total	0.60	0.32	0.13	0.30	4.06	17.29	30.29	14.77	18.38	1.42	0.65	1.77	3.85	3.23	1.83	1.12	100.00

VNE 522 & 544 ECR Long Beach NY Shore Landing Climatological Wind Rose for November: 1979 - 2015



Joint Frequency Distribution Table

	N	NNE	NE	ENE	E	ESE	SE	SSE	S	SSW	SW	WSW	W	WNW	NW	NNW	Total
calm	0.01	•	•	0.01	0.02	0.01	•	0.02	•	0.02	0.02	0.01	0.03	0.01	0.01	0.03	0.23
0 - 5 kts	0.38	0.58	0.44	0.43	0.45	0.45	0.40	0.37	0.45	0.56	0.62	0.61	0.65	0.65	0.64	0.58	8.26
5 - 10 kts	2.10	1.78	1.39	1.14	0.97	1.09	1.14	1.06	1.43	2.19	2.64	3.02	2.66	2.76	2.65	2.29	30.32
10 - 15 kts	2.20	1.68	1.45	0.83	0.50	0.49	0.66	0.68	1.40	2.51	2.94	3.59	4.02	4.22	4.22	2.90	34.28
15 - 20 kts	0.89	0.91	0.99	0.80	0.36	0.24	0.38	0.51	0.74	1.38	1.47	1.49	2.19	3.12	3.12	1.04	19.64
20 - 25 kts	0.24	0.36	0.50	0.12	0.12	0.17	0.22	0.28	0.24	0.27	0.20	0.29	0.64	1.02	0.93	0.20	5.77
25 - 30 kts	0.06	0.07	0.19	0.08	0.07	0.05	0.02	0.12	0.08	0.07	0.01	0.05	0.14	0.21	0.07	0.02	1.30
30 - 35 kts	0.01	0.01	0.01	0.01	0.03	•	0.01	0.05	0.02	0.01	•	•	0.01	•	•	•	0.19
35 - 40 kts	•	•	0.01	•	•	•	•	0.01	•	•	•	•	•	•	•	•	0.02
40 - 45 kts	•	•	•	•	•	•	•	•	•	•	•	•	•	•	•	•	•
45 - 50 kts	•	•	•	•	•	•	•	•	•	•	•	•	•	•	•	•	•
Total	5.90	5.39	4.97	3.42	2.52	2.50	2.84	3.10	4.37	7.00	7.90	9.06	10.34	11.99	11.63	7.07	100.00